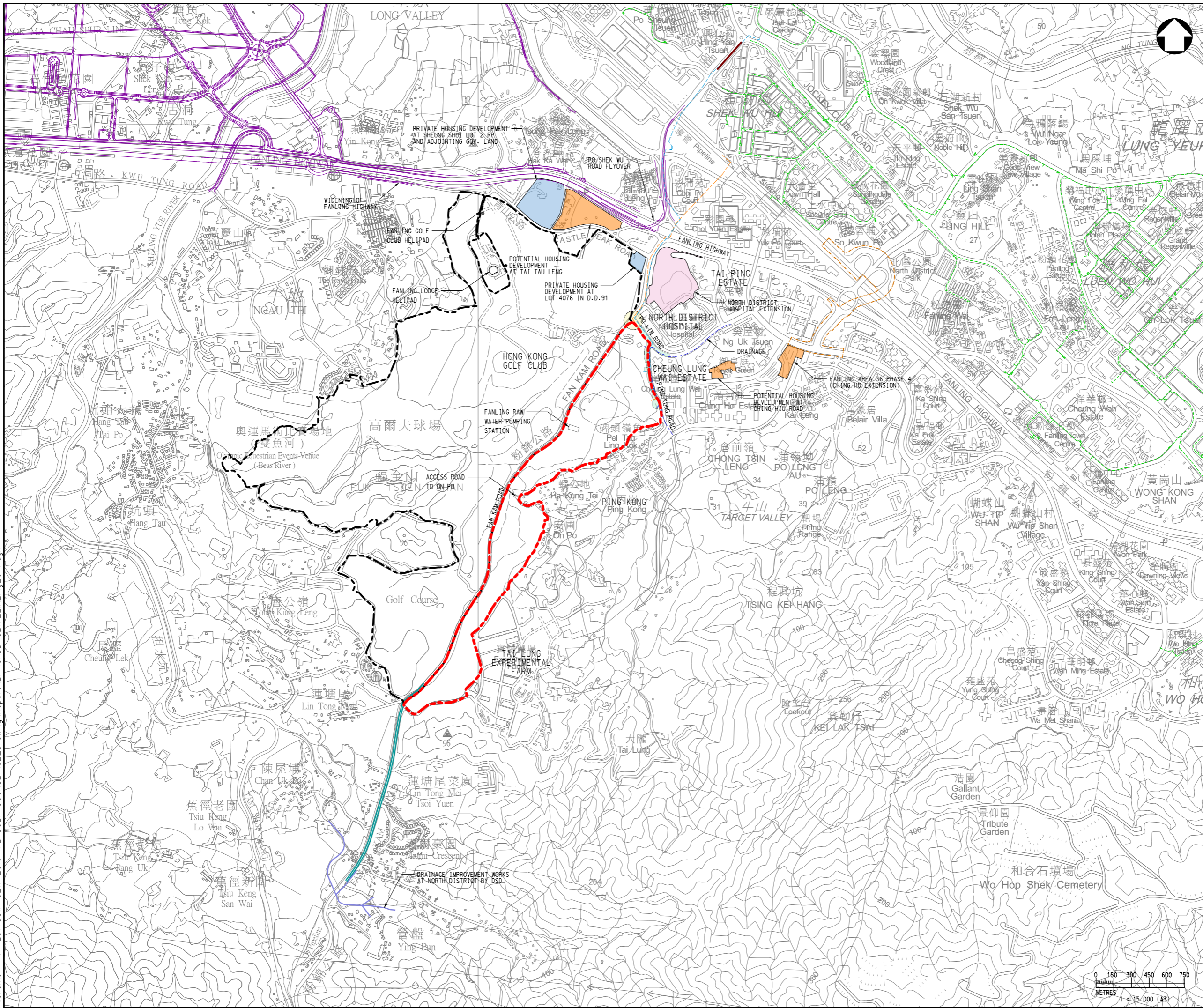


Date : 12/28/2021
 Filename : X:\2514\331A_CE17-2019 (FL GOLF COURSE)\02_Drawing Report\EA\CADD\CE17_EIA_Fig_014.dgn



NOTES :

- ALL DIMENSIONS ARE IN MILLIMETRES UNLESS OTHERWISE STATED.
- ALL LEVELS ARE IN METRES (M) AND RELATIVE TO HONG KONG PRINCIPAL DATUM (mPD).

LEGEND :


- PROJECT BOUNDARY
- FANLING GOLF COURSE (FGC)
- POTENTIAL PLANNED RESIDENTIAL DEVELOPMENT
- PRIVATE HOUSING DEVELOPMENT
- FANLING HIGHWAY WIDENING & PO SHEK WU ROAD FLYOVER
- SO KWUN PO INTERCHANGE
- RECLAIMED WATER SUPPLY TO SHEUNG SHUI AND FANLING - INVESTIGATION, DESIGN AND CONSTRUCTION
- ROAD IMPROVEMENT WORKS AT FAN KAM ROAD
- RETROFITTING OF NOISEBARRIER ON PO SHEK WU ROAD
- DRAINAGE IMPROVEMENTS AT NORTH DISTRICT
- NORTH DISTRICT HOSPITAL EXTENSION
- PLANNED JUNCTION IMPROVEMENT WORKS

ASSOCIATED SUPPORTING INFRASTRUCTURE AND UTILITIES

- LAYING OF SEWER TO SHEK WU HUI SEWAGE TREATMENT WORKS
- LAYING OF FRESH WATERMAINS AND FLUSHING WATERMAINS
- LAYING OF DRAINAGE PIPES AND CONSTRUCTION OF FLOOD WALL
- JUNCTION IMPROVEMENT WORKS AT PO KIN ROAD / PING KONG ROAD & ROAD MODIFICATION AT PING KONG ROAD

Rev	Description	By	Date

Consultant



Project title


AGREEMENT NO. CE17/2019 (CE)
 TECHNICAL STUDY ON PARTIAL DEVELOPMENT OF FANLING GOLF COURSE SITE - FEASIBILITY STUDY

Drawing title

LOCATION OF CONCURRENT PROJECTS

Drawing no.	Figure 1.2	Rev.	-
Drawn	Date	Checked	Approved
CAD	12/2020	cck	EW
Scale	AS SHOWN (A3)	Status	-

© COPYRIGHT RESERVED



土木工程拓展署
 CIVIL ENGINEERING AND DEVELOPMENT DEPARTMENT
 北拓處
 NORTH DEVELOPMENT OFFICE

