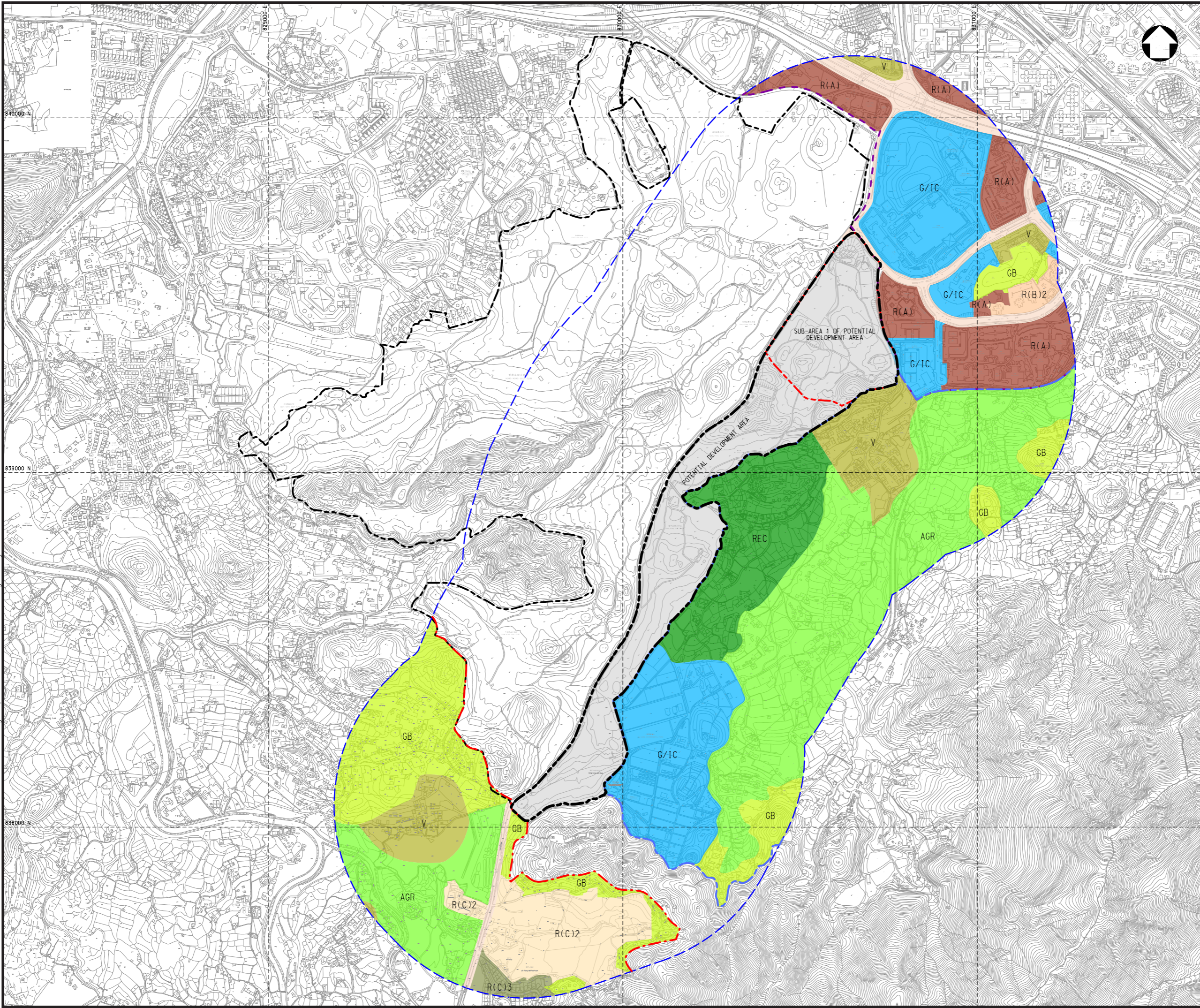


Date : 10/5/2022
 Filename : X:\2514331A CE17-2019 (FL GOLF COURSE)\02_Drawing\Report\EIA\CADD\CE17_EIA_Fig_011.dgn



NOTES :

1. ALL DIMENSIONS ARE IN MILLIMETRES UNLESS OTHERWISE STATED.
2. ALL LEVELS ARE IN METRES (M) AND RELATIVE TO HONG KONG PRINCIPAL DATUM (mPD).

LEGEND :

- HONG KONG (FANLING) GOLF CLUB (FGC)
- POTENTIAL DEVELOPMENT AREA
- SUB-AREA 1 OF POTENTIAL DEVELOPMENT AREA
- ASSESSMENTAL BOUNDARY
- R(A) RESIDENTIAL GROUP A
- G/IC GOVERNMENT, INSTITUTION OR COMMUNITY
- AGR AGRICULTURE
- REC RECREATION
- GB GREEN BELT
- V VILLAGE TYPE DEVELOPMENT
- R(B) RESIDENTIAL GROUP B
- R(C) RESIDENTIAL GROUP C
- R(C) RESIDENTIAL GROUP C2
- R(C) RESIDENTIAL GROUP C3
- CDA COMPREHENSIVE DEVELOPMENT AREA
- STATUTORY PLAN S/FSS/25
- STATUTORY PLAN S/NE-PK/11
- STATUTORY PLAN S/NE-KTS/18

Rev	Description	By	Date



Project title
 AGREEMENT NO. CE17/2019 (CE)
 TECHNICAL STUDY ON PARTIAL DEVELOPMENT
 OF FANLING GOLF COURSE SITE
 - FEASIBILITY STUDY

Drawing title
**REVIEW OF PLANNING AND
 DEVELOPMENT CONTROL
 FRAMEWORK**

Drawing no. FIGURE 11.1		Rev. -	
Drawn CAD	Date 31/10/19	Checked LW	Approved EW
Scale 1:10000 (A3)	Status -		

© COPYRIGHT RESERVED

土木工程拓展署
 CIVIL ENGINEERING AND DEVELOPMENT
 DEPARTMENT
 北拓展處
 NORTH DEVELOPMENT OFFICE