

KEY PLAN

- NOTES :
- ALL DIMENSIONS ARE IN MILLIMETRES UNLESS OTHERWISE STATED.
 - ALL LEVELS ARE IN METRES (M) AND RELATIVE TO HONG KONG PRINCIPAL DATUM (HPD).

- +18.0 SITE FORMATION SPOT HEIGHT
- PROPOSED PUBLIC HOUSING DEVELOPMENT
- SUB-AREA 1 OF POTENTIAL DEVELOPMENT AREA
- SUB-AREA 2 OF POTENTIAL DEVELOPMENT AREA
- EXISTING TREE TO BE RETAINED
- TREES OF PARTICULAR INTEREST TO BE RETAINED
- NEW TREE
- PROPOSED PLANTING AREA
- PROPOSED ROAD NETWORK
- PROPOSED FOOTPATH
- ILEX GRACILIFLORA TO BE TRANSPLANTED

- A SCHOOL CAMPUS (BY OTHERS)
- B BALL COURT
- C CHILDREN PLAYGROUND AREA
- D FITNESS AREA
- E MULTI FUNCTIONAL PLAZA
- F SITTING-OUT AREA
- G ROLLER SKATING
- H BUFFER PLANTING
- I JOGGING TRACK

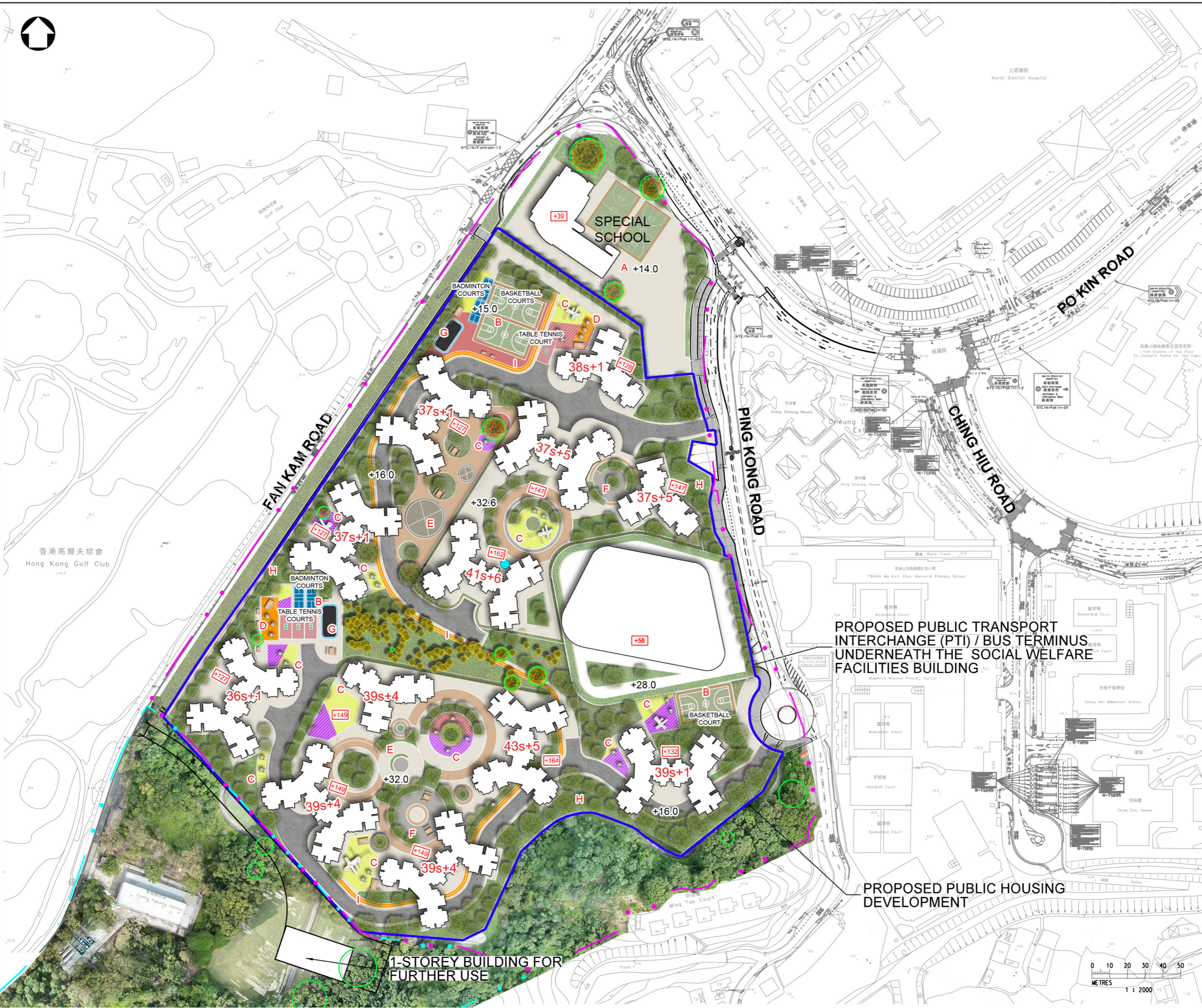
Rev	Description	By	Date



Project title
 AGREEMENT NO. CE17/2019 (CE)
 TECHNICAL STUDY ON PARTIAL DEVELOPMENT OF FANLING GOLF COURSE SITE - FEASIBILITY STUDY

Drawing title
 CONCEPTUAL LANDSCAPE AND MITIGATION PLAN (SUB-AREA 1)

Drawing no. FIGURE 11.11		Rev. -	
Drawn DL	Date 05/22	Checked LW	Approved -
Scale 1:2000 (A3)		Status -	



Date : \$DATE\$
 File name : \$FILE\$

