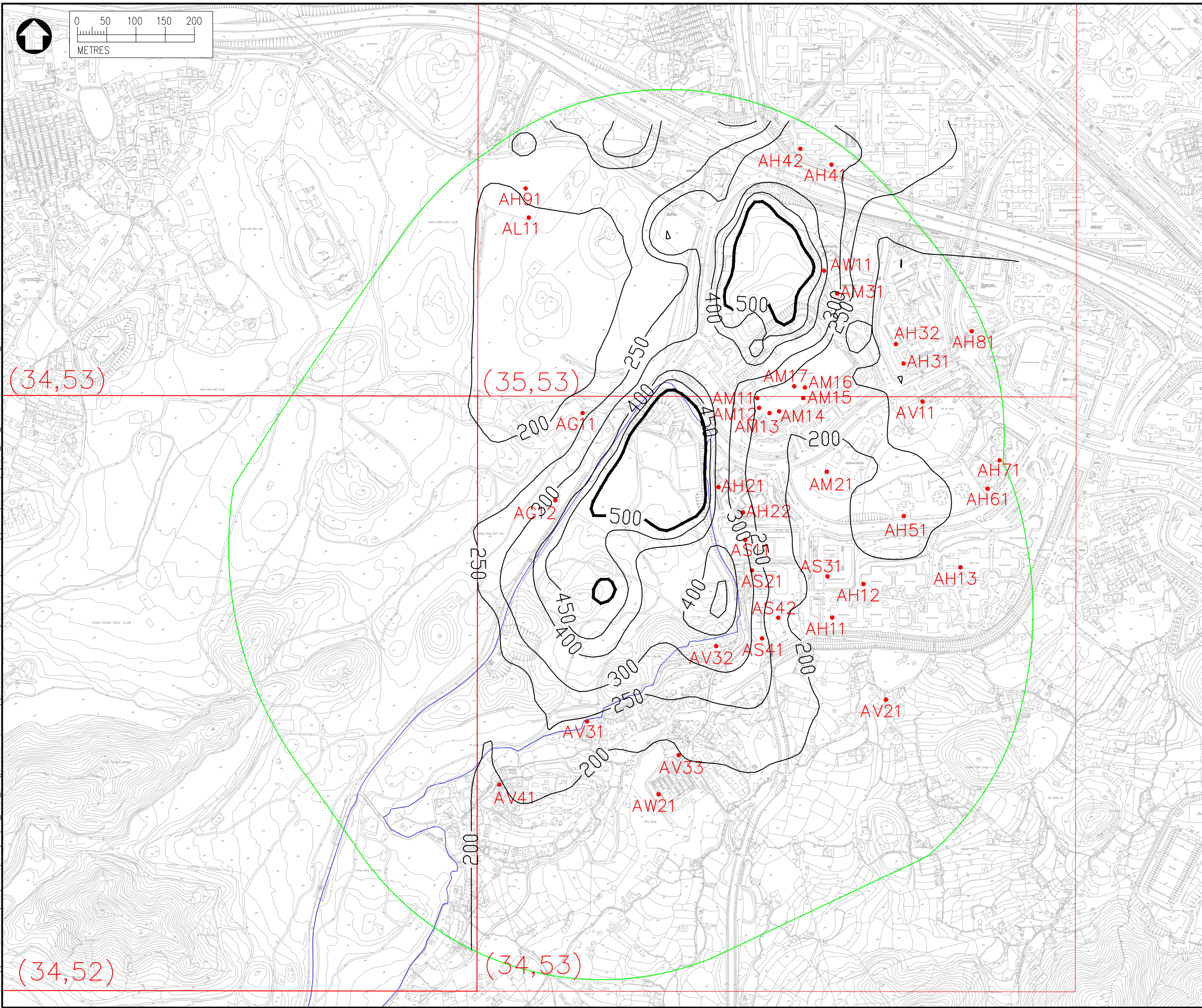


Date : 2022-05-10  
 Filename : \\hkvn200dat16\_SDE\_V\_Proj\Projects\Project\_H321\_Env\2535551-2535600\2535551A - Fanning Golf Course 6\_Working\_3\_Air\Drawings\CE17\_Env\Contour Construction v7



**NOTES :**

1. ALL DIMENSIONS ARE IN MILLIMETRES UNLESS OTHERWISE STATED.
2. ALL LEVELS ARE IN METRES (M) AND RELATIVE TO HONG KONG PRINCIPAL DATUM (mPD).

**LEGEND :**

- PROJECT AREA
- 500M QUANTITATIVE ASSESSMENT AREA FOR CONSTRUCTION PHASE
- CONCENTRATIONS in ( $\mu\text{g}/\text{m}^3$ )
- REPRESENTATIVE AIR SENSITIVE RECEIVERS

**AQO LIMIT OF CONCENTRATIONS**

	1ST HOURLY	10TH DAILY	ANNUAL	$\mu\text{g}/\text{m}^3$
TSP				500
RSP				100
FSP	19TH DAILY (Gov.)			50
	ANNUAL			25

Rev	Description	By	Date

Consultant

Project title

AGREEMENT NO. CE17/2019 (CE)  
 TECHNICAL STUDY ON PARTIAL DEVELOPMENT OF FANLING GOLF COURSE SITE - FEASIBILITY STUDY

Drawing title

CONTOURS OF CUMULATIVE 1ST HOURLY TSP CONCENTRATION AT 1.5MAG (CONSTRUCTION PHASE) (MITIGATED)

Drawing no. **FIGURE 3.5a**

Drawn	Date	Checked	Approved
SC	MAY2022	CY	CCK
Scale	1:5000 (A3)	Status	-

© COPYRIGHT RESERVED

土木工程拓展署  
 CIVIL ENGINEERING AND DEVELOPMENT DEPARTMENT  
 NORTH DEVELOPMENT OFFICE