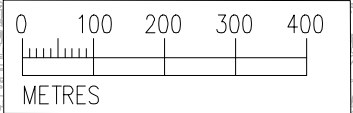
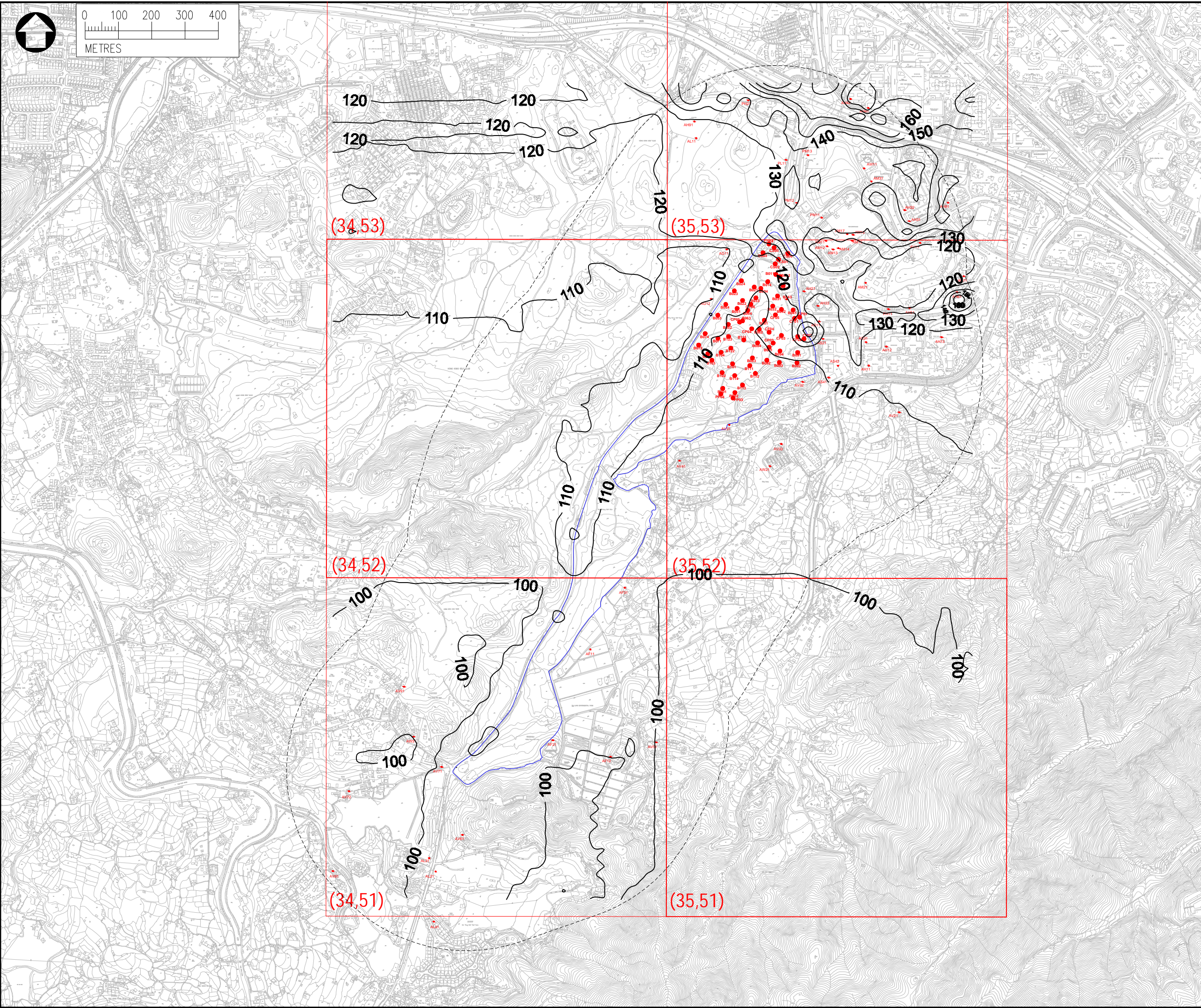


Date : 2022-05-05
 Filename : \\hkwn\200dat16_SDE\7_Projects\Project_H321_Env\2535551-2535600\2535551A - Fanling Golf Course 6_Working\3_Air\Drawings\CE17_Env_Contour Operation_v7



- NOTES :**
1. ALL DIMENSIONS ARE IN MILLIMETRES UNLESS OTHERWISE STATED.
 2. ALL LEVELS ARE IN METRES (M) AND RELATIVE TO HONG KONG PRINCIPAL DATUM (mPD).

- LEGEND :**
- PROJECT AREA
 - 500m ASSESSMENT AREA
 - CONCENTRATIONS in ($\mu\text{g}/\text{m}^3$)

AQO LIMIT OF CONCENTRATIONS

			$\mu\text{g}/\text{m}^3$
NO2	19TH HOURLY	200	$\mu\text{g}/\text{m}^3$
	ANNUAL	40	$\mu\text{g}/\text{m}^3$
RSP	10TH DAILY	100	$\mu\text{g}/\text{m}^3$
	ANNUAL	50	$\mu\text{g}/\text{m}^3$
FSP	19TH DAILY (Gov.)	50	$\mu\text{g}/\text{m}^3$
	36TH DAILY	50	$\mu\text{g}/\text{m}^3$
	ANNUAL	25	$\mu\text{g}/\text{m}^3$

Rev	Description	By	Date
Consultant			
Project title			
AGREEMENT NO. CE17/2019 (CE) TECHNICAL STUDY ON PARTIAL DEVELOPMENT OF FANLING GOLF COURSE SITE – FEASIBILITY STUDY			
Drawing title			
CONTOURS OF CUMULATIVE 19TH DAILY NO2 CONCENTRATION AT 1.5MAG OPERATIONAL PHASE			
Drawing no.		Rev.	
FIGURE 3.6a		-	
Drawn	Date	Checked	Approved
SC	MAY2022	CY	CCK
Scale	Status		
1:5000 (A3)	-		

© COPYRIGHT RESERVED

土木工程發展署
 CIVIL ENGINEERING AND DEVELOPMENT DEPARTMENT
 NORTH DEVELOPMENT OFFICE