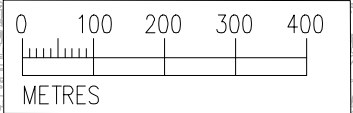
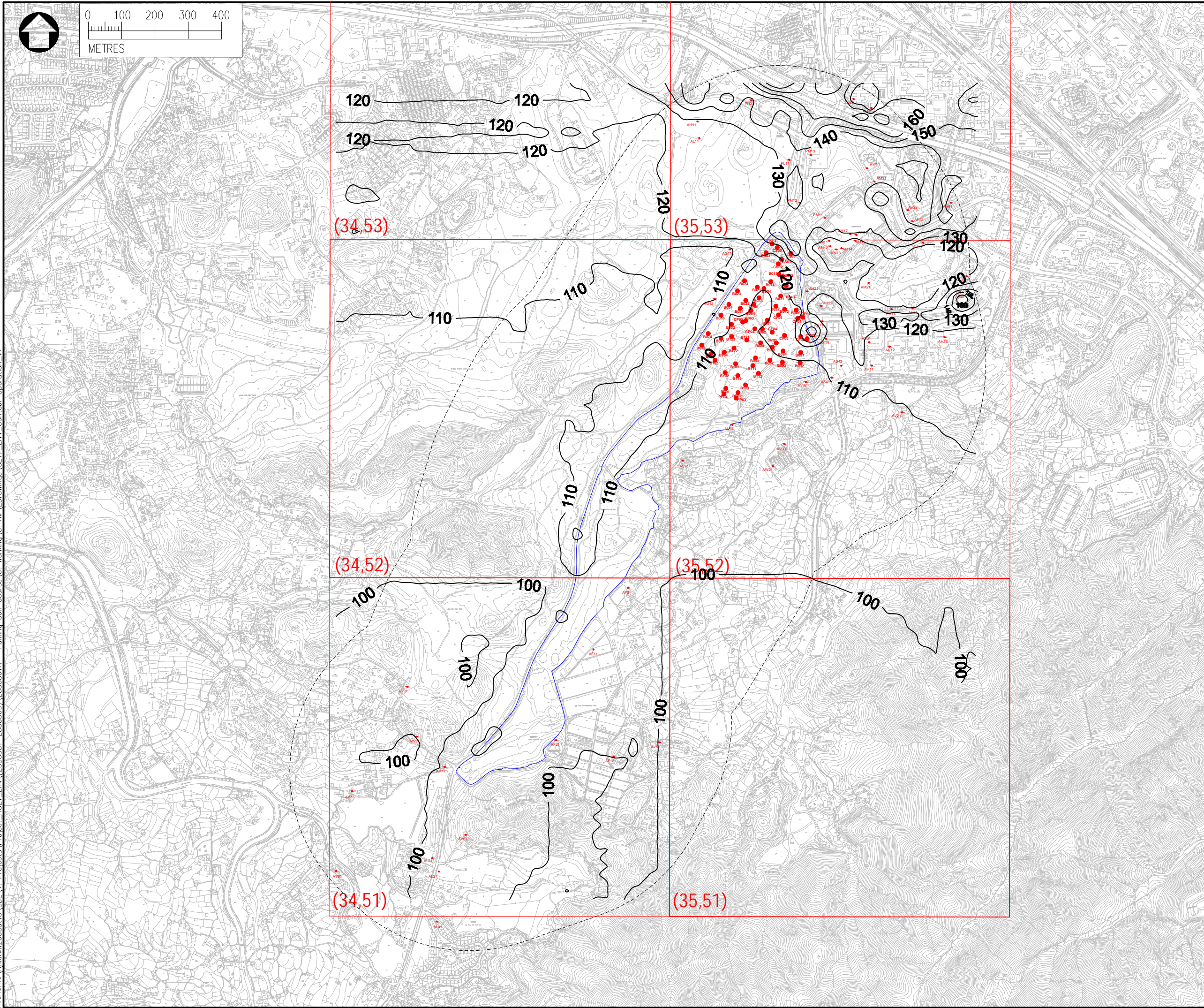


Date : 2022-05-05  
 Filename : \\hkwn200dat16\_SDE\7\_Projects\Project\_H321\_Env\2535551-2535600\2535551A - Fanling Golf Course 6\_Working\3\_Air\Drawings\CE17\_Env\_Contour Operation\_v7



- NOTES :**
1. ALL DIMENSIONS ARE IN MILLIMETRES UNLESS OTHERWISE STATED.
  2. ALL LEVELS ARE IN METRES (M) AND RELATIVE TO HONG KONG PRINCIPAL DATUM (mPD).

- LEGEND :**
- PROJECT AREA
  - 500m ASSESSMENT AREA
  - CONCENTRATIONS in ( $\mu\text{g}/\text{m}^3$ )

**AQO LIMIT OF CONCENTRATIONS**

NO2	19TH HOURLY	200	$\mu\text{g}/\text{m}^3$
	ANNUAL	40	$\mu\text{g}/\text{m}^3$
RSP	10TH DAILY	100	$\mu\text{g}/\text{m}^3$
	ANNUAL	50	$\mu\text{g}/\text{m}^3$
FSP	19TH DAILY (Gov.)	50	$\mu\text{g}/\text{m}^3$
	36TH DAILY	50	$\mu\text{g}/\text{m}^3$
	ANNUAL	25	$\mu\text{g}/\text{m}^3$

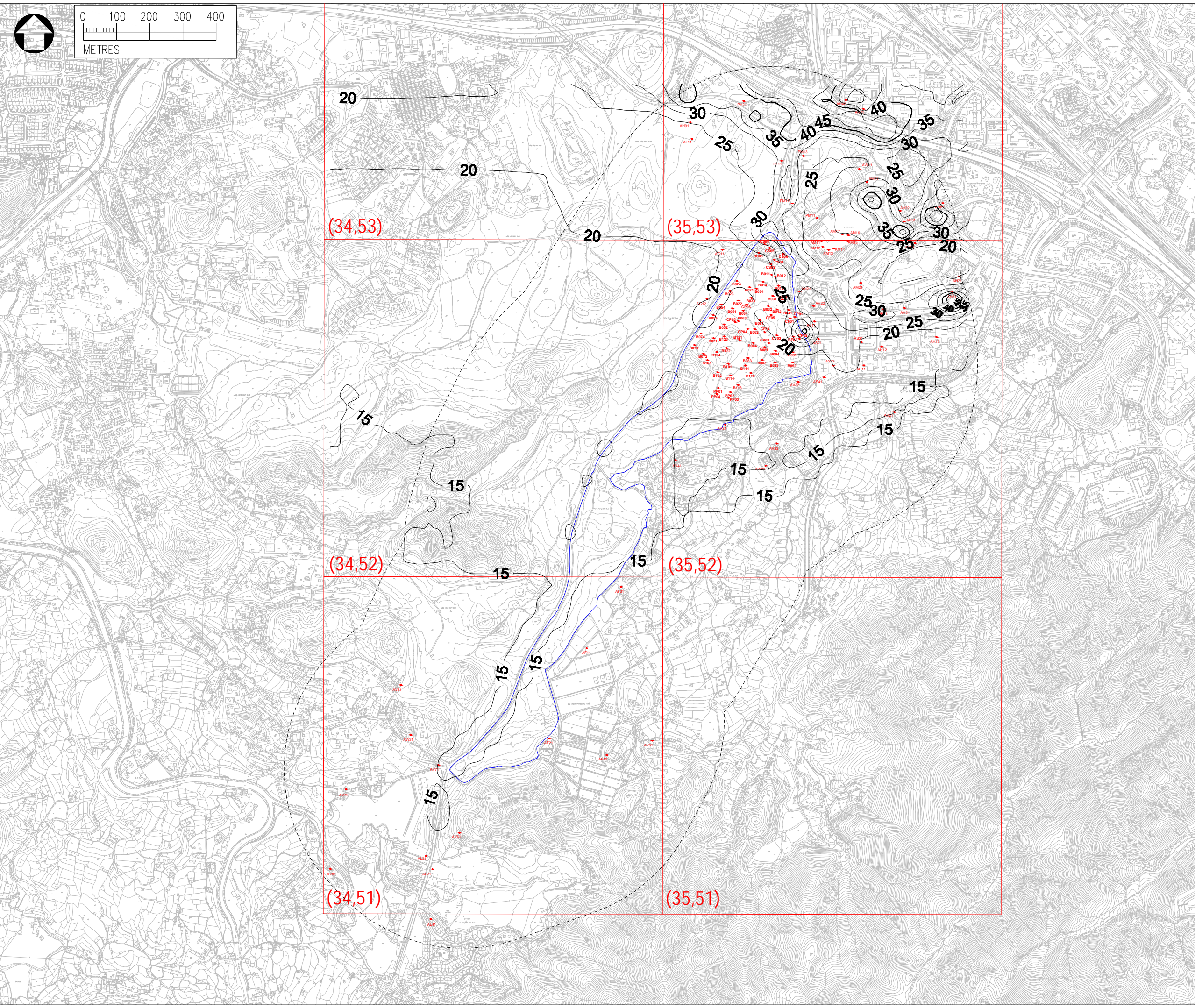
Rev	Description	By	Date
Consultant			
Project title			
AGREEMENT NO. CE17/2019 (CE) TECHNICAL STUDY ON PARTIAL DEVELOPMENT OF FANLING GOLF COURSE SITE - FEASIBILITY STUDY			
Drawing title			
CONTOURS OF CUMULATIVE 19TH DAILY NO2 CONCENTRATION AT 1.5MAG OPERATIONAL PHASE			
Drawing no.		Rev.	
FIGURE 3.6a		-	
Drawn	Date	Checked	Approved
SC	MAY2022	CY	CCK
Scale	Status		
1:5000 (A3)	-		

© COPYRIGHT RESERVED

土木工程拓展署  
 CIVIL ENGINEERING AND DEVELOPMENT DEPARTMENT  
 NORTH DEVELOPMENT OFFICE



Date : 2022-05-05  
 Filename : \\hkwn200dat16\_SDE\7\_Projects\Project\_H321\_Env\2535551-2535600\2535551A - Fanning Golf Course 6. Working\3\_Air\Drawings\CE17\_Env\_Contour\_Operation\_v7



- NOTES :
1. ALL DIMENSIONS ARE IN MILLIMETRES UNLESS OTHERWISE STATED.
  2. ALL LEVELS ARE IN METRES (M) AND RELATIVE TO HONG KONG PRINCIPAL DATUM (mPD).

- LEGEND :
- PROJECT AREA
  - 500m ASSESSMENT AREA
  - CONCENTRATIONS in ( $\mu\text{g}/\text{m}^3$ )

AQO LIMIT OF CONCENTRATIONS

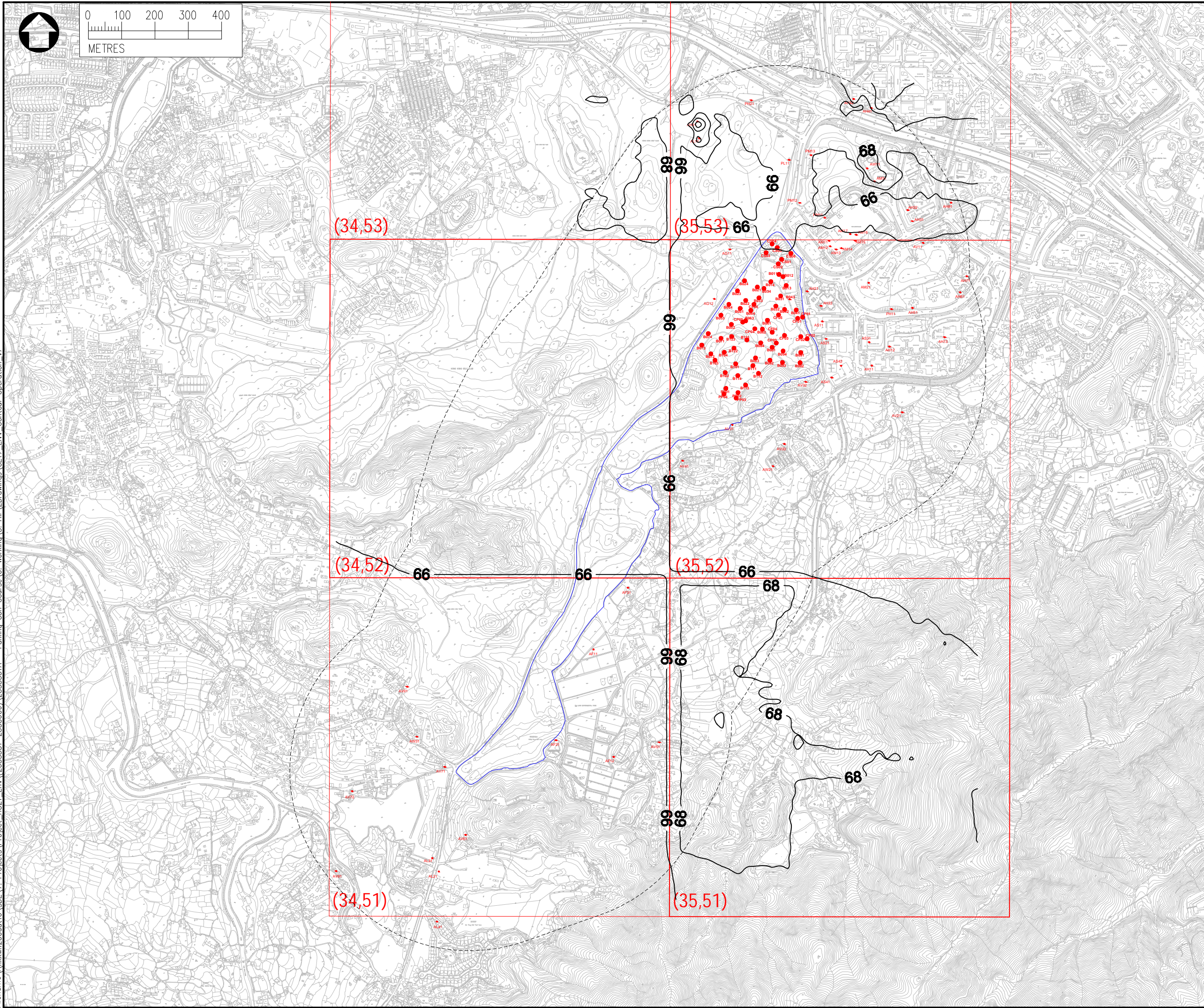
NO2	19TH HOURLY	200	$\mu\text{g}/\text{m}^3$
	ANNUAL	40	$\mu\text{g}/\text{m}^3$
RSP	10TH DAILY	100	$\mu\text{g}/\text{m}^3$
	ANNUAL	50	$\mu\text{g}/\text{m}^3$
FSP	19TH DAILY (Gov.)	50	$\mu\text{g}/\text{m}^3$
	36TH DAILY	50	$\mu\text{g}/\text{m}^3$
	ANNUAL	25	$\mu\text{g}/\text{m}^3$

Rev	Description	By	Date
Consultant			
Project title			
AGREEMENT NO. CE17/2019 (CE) TECHNICAL STUDY ON PARTIAL DEVELOPMENT OF FANLING GOLF COURSE SITE - FEASIBILITY STUDY			
Drawing title			
CONTOURS OF CUMULATIVE ANNUAL NO2 CONCENTRATION AT 1.5MAG OPERATIONAL PHASE			
Drawing no. FIGURE 3.6b			Rev. -
Drawn SC	Date MAY2022	Checked CY	Approved CCK
Scale 1:5000 (A3)	Status -		





Date : 2022-05-05  
 Filename : \\hkwn200dat16\_SDE\7\_Projects\Project\_H321\_Env\2535551-2535600\2535551A - Fanling Golf Course 6\_Working\3\_Air\Drawings\CE17\_Env\_Contour\_Operation\_v7



**NOTES :**

1. ALL DIMENSIONS ARE IN MILLIMETRES UNLESS OTHERWISE STATED.
2. ALL LEVELS ARE IN METRES (M) AND RELATIVE TO HONG KONG PRINCIPAL DATUM (mPD).

**LEGEND :**

- PROJECT AREA
- 500m ASSESSMENT AREA
- CONCENTRATIONS in ( $\mu\text{g}/\text{m}^3$ )

**AQO LIMIT OF CONCENTRATIONS**

NO2	19TH HOURLY	200	$\mu\text{g}/\text{m}^3$
	ANNUAL	40	$\mu\text{g}/\text{m}^3$
RSP	10TH DAILY	100	$\mu\text{g}/\text{m}^3$
	ANNUAL	50	$\mu\text{g}/\text{m}^3$
FSP	19TH DAILY (Gov.)	50	$\mu\text{g}/\text{m}^3$
	36TH DAILY	50	$\mu\text{g}/\text{m}^3$
	ANNUAL	25	$\mu\text{g}/\text{m}^3$

Rev	Description	By	Date
-----	-------------	----	------



Project title  
**AGREEMENT NO. CE17/2019 (CE)  
 TECHNICAL STUDY ON PARTIAL DEVELOPMENT  
 OF FANLING GOLF COURSE SITE  
 - FEASIBILITY STUDY**

Drawing title  
**CONTOURS OF CUMULATIVE  
 10TH DAILY PM10  
 CONCENTRATION AT 1.5MAG  
 OPERATIONAL PHASE**

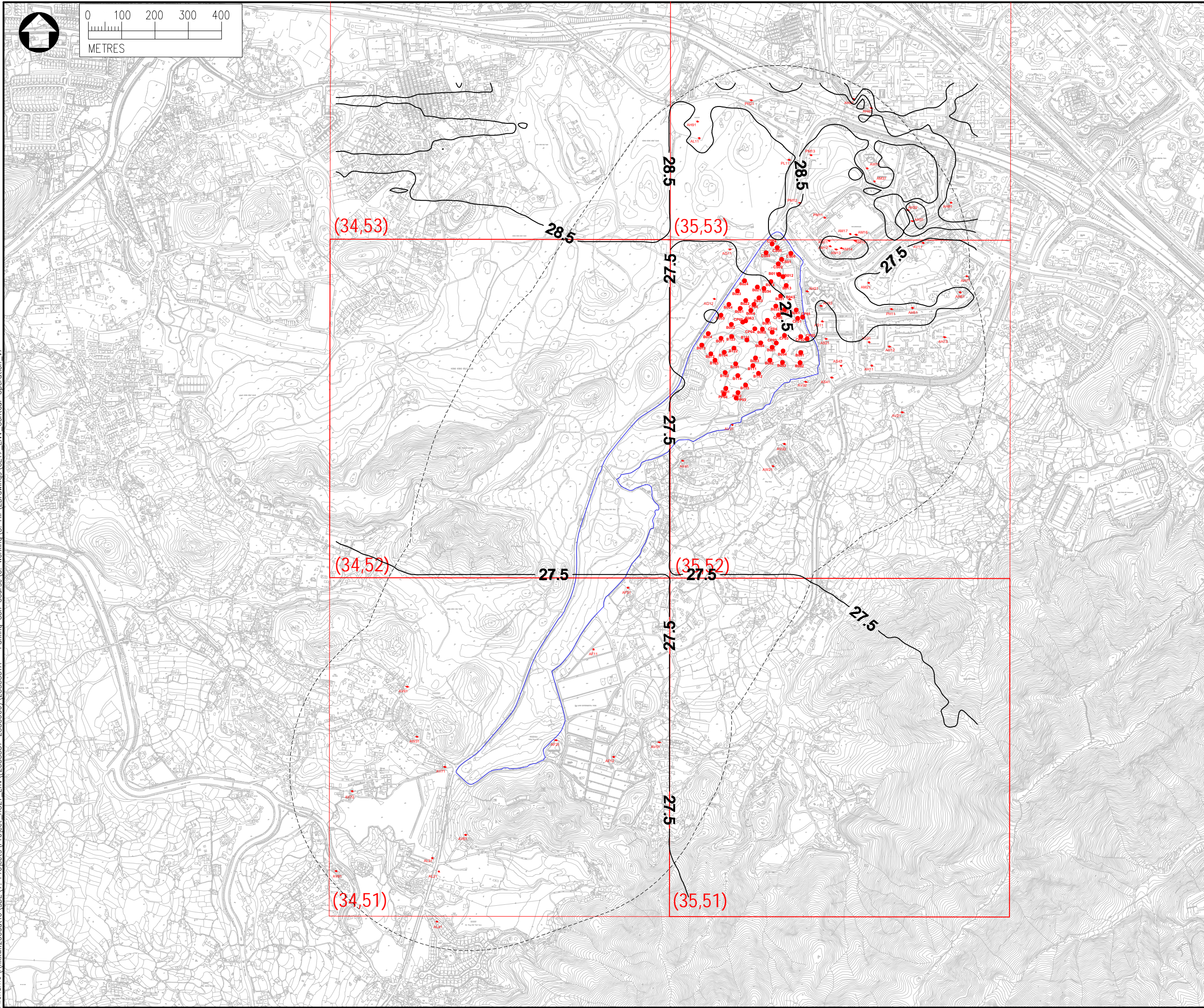
Drawing no. <b>FIGURE 3.6c</b>		Rev. -	
Drawn SC	Date MAY2022	Checked CY	Approved CCK
Scale 1:5000 (A3)		Status -	

© COPYRIGHT RESERVED

土木工程發展署  
 CIVIL ENGINEERING AND DEVELOPMENT  
 DEPARTMENT  
 NORTH DEVELOPMENT OFFICE



Date : 2022-05-05  
 Filename : \\hkwn200dat16\_SDE\7\_Projects\Project\_H321\_Env\2535551-2535600\2535551A - Fanling Golf Course 6\_Working\3\_Air\Drawings\CE17\_Env\_Contour Operation\_v7



**NOTES :**


1. ALL DIMENSIONS ARE IN MILLIMETRES UNLESS OTHERWISE STATED.
2. ALL LEVELS ARE IN METRES (M) AND RELATIVE TO HONG KONG PRINCIPAL DATUM (mPD).

**LEGEND :**

- PROJECT AREA
- - - - - 500m ASSESSMENT AREA
- CONCENTRATIONS in ( $\mu\text{g}/\text{m}^3$ )

**AQO LIMIT OF CONCENTRATIONS**

NO2	19TH HOURLY	200	$\mu\text{g}/\text{m}^3$
	ANNUAL	40	$\mu\text{g}/\text{m}^3$
RSP	10TH DAILY	100	$\mu\text{g}/\text{m}^3$
	ANNUAL	50	$\mu\text{g}/\text{m}^3$
FSP	19TH DAILY (Gov.)	50	$\mu\text{g}/\text{m}^3$
	36TH DAILY	50	$\mu\text{g}/\text{m}^3$
	ANNUAL	25	$\mu\text{g}/\text{m}^3$

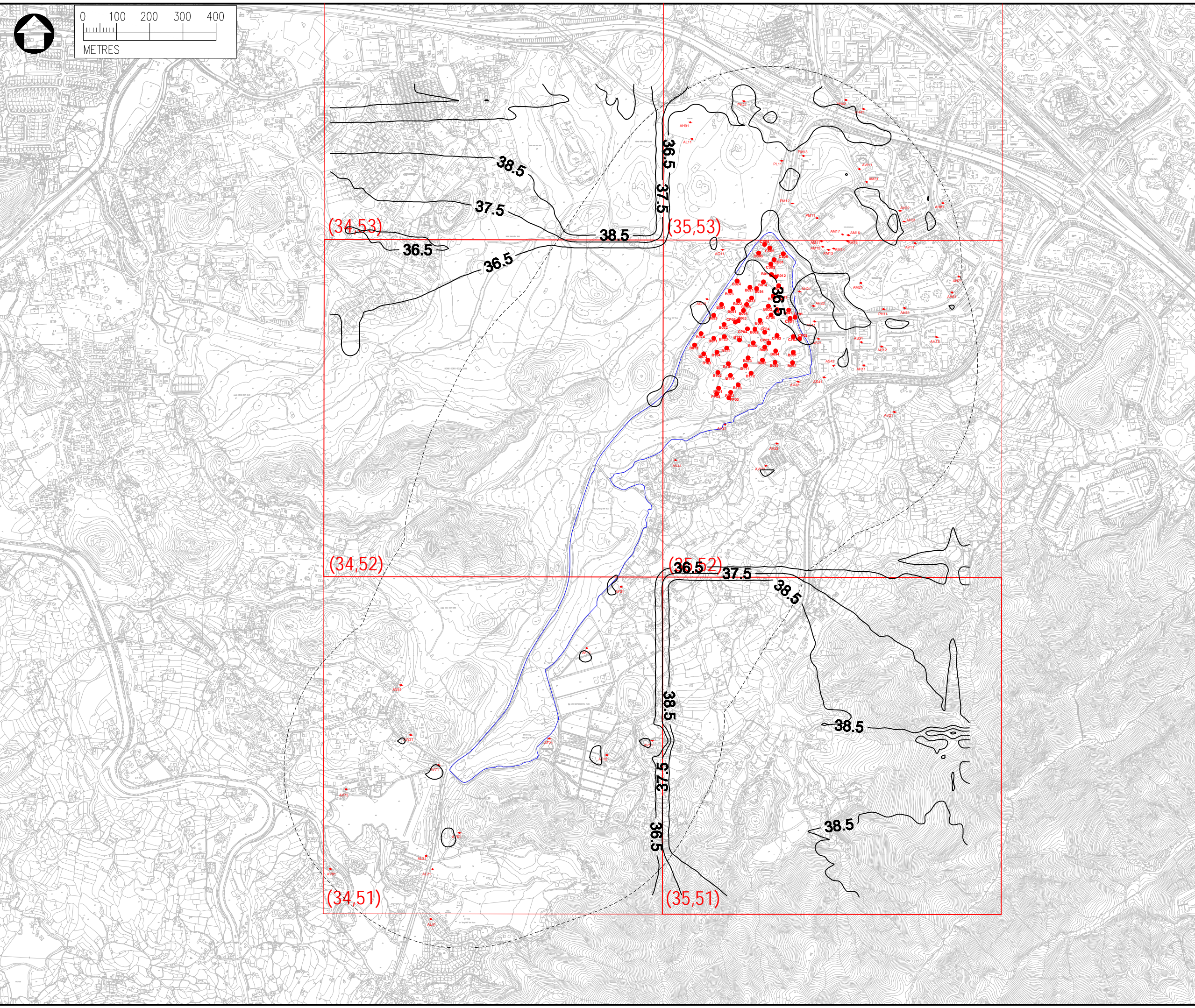
Rev	Description	By	Date
Consultant			
			
Project title			
AGREEMENT NO. CE17/2019 (CE) TECHNICAL STUDY ON PARTIAL DEVELOPMENT OF FANLING GOLF COURSE SITE - FEASIBILITY STUDY			
Drawing title			
CONTOURS OF CUMULATIVE ANNUAL PM10 CONCENTRATION AT 1.5MAG OPERATIONAL PHASE			
Drawing no. <b>FIGURE 3.6d</b>			Rev. <b>-</b>
Drawn SC	Date MAY2022	Checked CY	Approved CCK
Scale 1:5000 (A3)		Status -	

© COPYRIGHT RESERVED





Date : 2022-05-05  
 Filename : \\hkwn200dat16\_SDE\_V7\_Projects\Project\_H321\_Env\2535551-2535600\2535551A - Fanling Golf Course 6\_Working\3\_Air\Drawings\CE17\_Env\_Contour\_Operation\_v7



- NOTES :**
1. ALL DIMENSIONS ARE IN MILLIMETRES UNLESS OTHERWISE STATED.
  2. ALL LEVELS ARE IN METRES (M) AND RELATIVE TO HONG KONG PRINCIPAL DATUM (mPD).

- LEGEND :**
- PROJECT AREA
  - 500m ASSESSMENT AREA
  - CONCENTRATIONS in ( $\mu\text{g}/\text{m}^3$ )

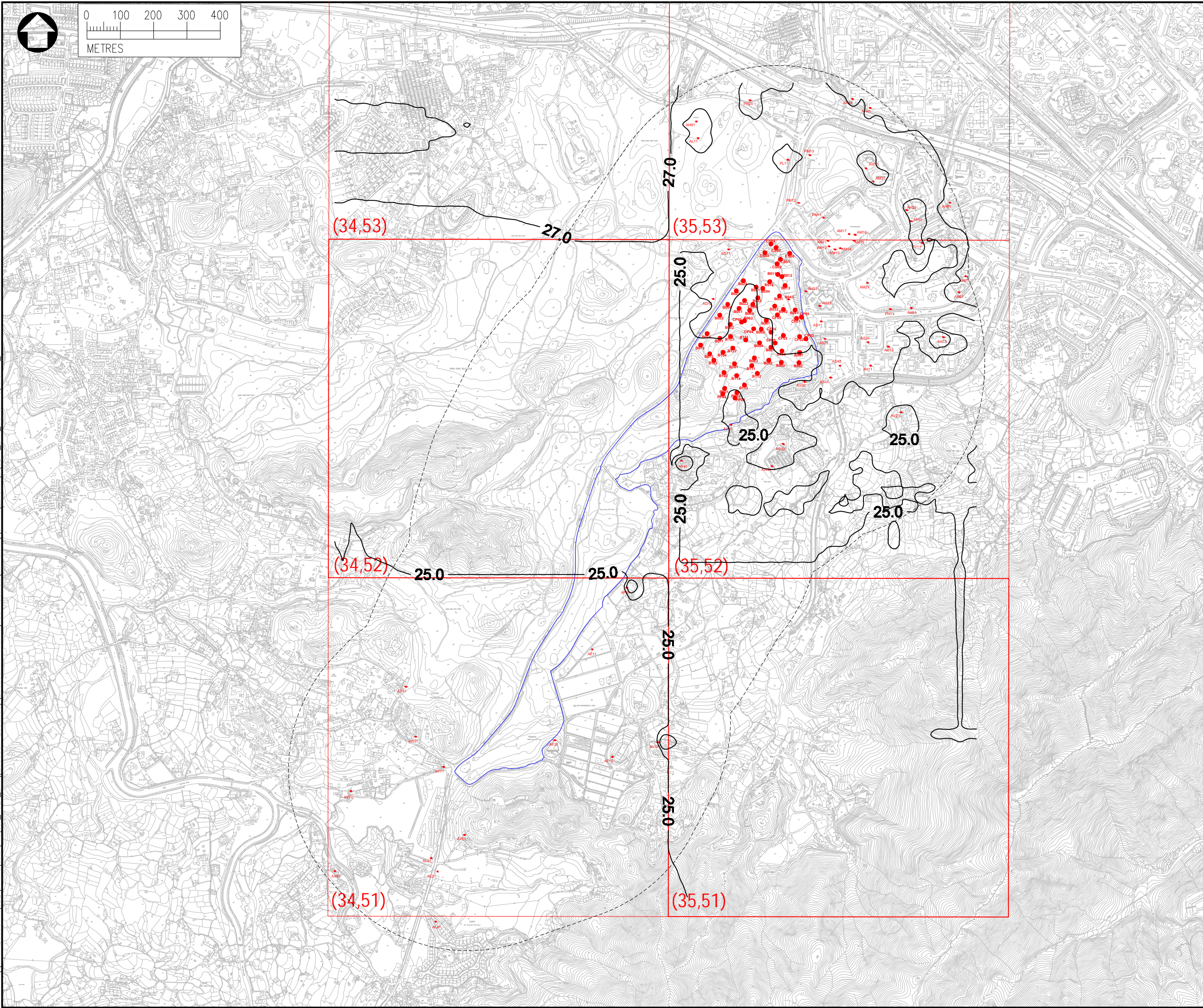
**AQO LIMIT OF CONCENTRATIONS**

NO2	19TH HOURLY	200	$\mu\text{g}/\text{m}^3$
	ANNUAL	40	$\mu\text{g}/\text{m}^3$
RSP	10TH DAILY	100	$\mu\text{g}/\text{m}^3$
	ANNUAL	50	$\mu\text{g}/\text{m}^3$
FSP	19TH DAILY (Gov.)	50	$\mu\text{g}/\text{m}^3$
	36TH DAILY	50	$\mu\text{g}/\text{m}^3$
	ANNUAL	25	$\mu\text{g}/\text{m}^3$

Rev	Description	By	Date
Consultant			
Project title			
AGREEMENT NO. CE17/2019 (CE) TECHNICAL STUDY ON PARTIAL DEVELOPMENT OF FANLING GOLF COURSE SITE – FEASIBILITY STUDY			
Drawing title			
CONTOURS OF CUMULATIVE 19TH DAILY PM2.5 CONCENTRATION AT 1.5MAG OPERATIONAL PHASE			
Drawing no.		Rev.	
FIGURE 3.6e		-	
Drawn	Date	Checked	Approved
SC	MAY2022	CY	CCK
Scale	Status		
1:5000 (A3)	-		
© COPYRIGHT RESERVED			
土木工程發展署 CIVIL ENGINEERING AND DEVELOPMENT DEPARTMENT NORTH DEVELOPMENT OFFICE			



Date : 2022-05-05  
 Filename : \\hkwn200dat16\_SDE\7\_Projects\Project\_H321\_Env\2535551-2535600\2535551A - Fanling Golf Course 6\_Working\3\_Air\Drawings\CE17\_Env\_Contour\_Operation\_v7



**NOTES :**


1. ALL DIMENSIONS ARE IN MILLIMETRES UNLESS OTHERWISE STATED.
2. ALL LEVELS ARE IN METRES (M) AND RELATIVE TO HONG KONG PRINCIPAL DATUM (mPD).

**LEGEND :**

- PROJECT AREA
- - - - - 500m ASSESSMENT AREA
- x CONCENTRATIONS in ( $\mu\text{g}/\text{m}^3$ )

**AQO LIMIT OF CONCENTRATIONS**

			$\mu\text{g}/\text{m}^3$
NO2	19TH HOURLY	200	$\mu\text{g}/\text{m}^3$
	ANNUAL	40	$\mu\text{g}/\text{m}^3$
RSP	10TH DAILY	100	$\mu\text{g}/\text{m}^3$
	ANNUAL	50	$\mu\text{g}/\text{m}^3$
FSP	19TH DAILY (Gov.)	50	$\mu\text{g}/\text{m}^3$
	36TH DAILY	50	$\mu\text{g}/\text{m}^3$
	ANNUAL	25	$\mu\text{g}/\text{m}^3$

Rev	Description	By	Date
Consultant			
			
Project title			
AGREEMENT NO. CE17/2019 (CE) TECHNICAL STUDY ON PARTIAL DEVELOPMENT OF FANLING GOLF COURSE SITE - FEASIBILITY STUDY			
Drawing title			
CONTOURS OF CUMULATIVE 36TH DAILY PM2.5 CONCENTRATION AT 1.5MAG OPERATIONAL PHASE			
Drawing no.		Rev.	
FIGURE 3.6f		-	
Drawn	Date	Checked	Approved
SC	MAY2022	CY	CCK
Scale	Status		
1:5000 (A3)	-		

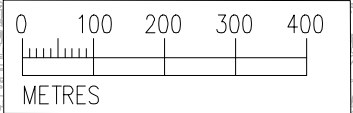
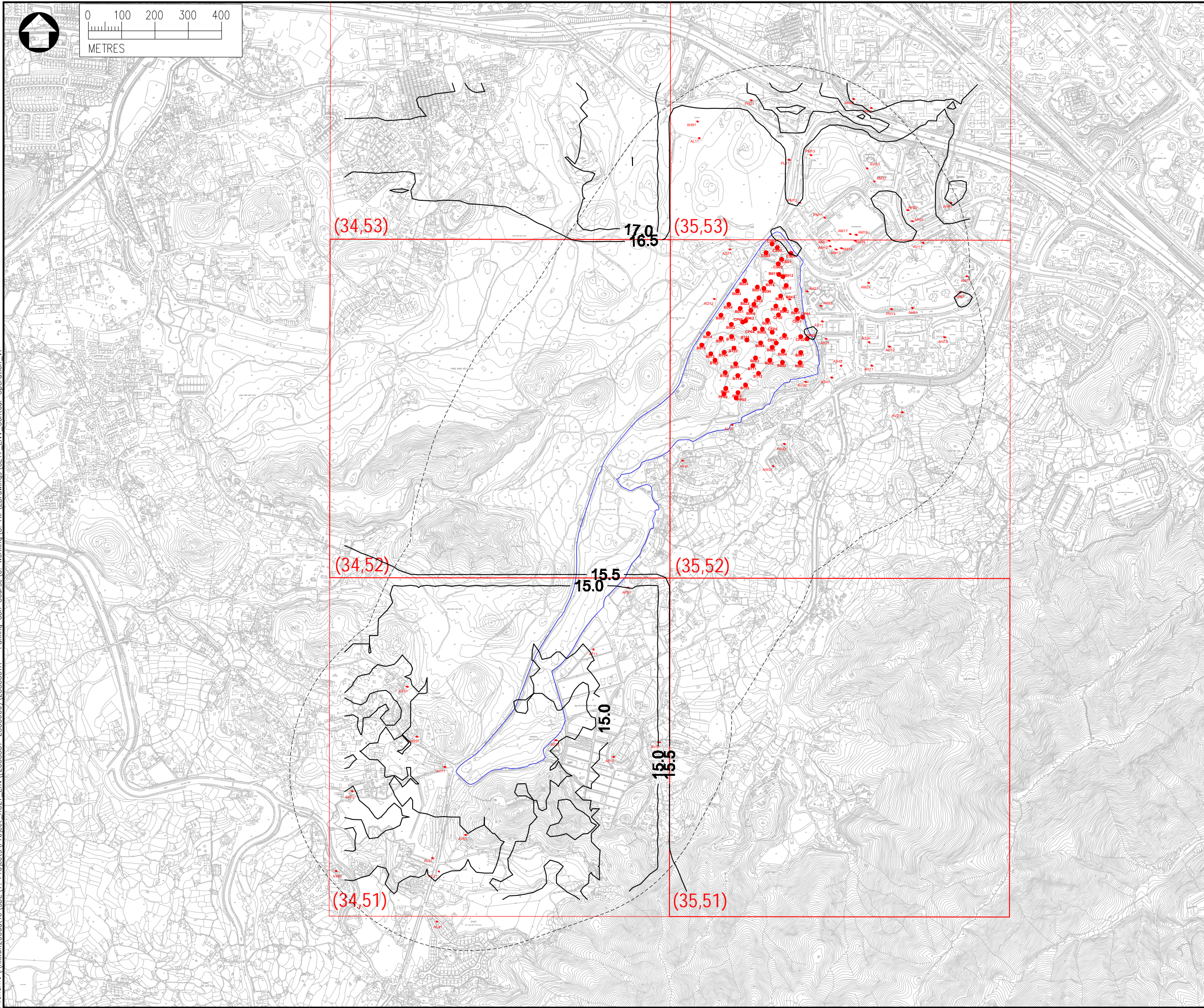
© COPYRIGHT RESERVED



**土木工程拓展署**  
**CIVIL ENGINEERING AND DEVELOPMENT**  
**DEPARTMENT**  
 NORTH DEVELOPMENT OFFICE



Date : 2022-05-05  
 Filename : \\hkwn200dat16\_SDEV7\_Projects\Project\_H321\_Env\2535551-2535600\2535551A - Fanling Golf Course 6\_Working\_3\_Air\Drawings\CE17\_Env\_Contour Operation\_v7



- NOTES :**
1. ALL DIMENSIONS ARE IN MILLIMETRES UNLESS OTHERWISE STATED.
  2. ALL LEVELS ARE IN METRES (M) AND RELATIVE TO HONG KONG PRINCIPAL DATUM (mPD).

- LEGEND :**
- PROJECT AREA
  - 500m ASSESSMENT AREA
  - CONCENTRATIONS in ( $\mu\text{g}/\text{m}^3$ )

**AQO LIMIT OF CONCENTRATIONS**

			$\mu\text{g}/\text{m}^3$
NO2	19TH HOURLY	200	$\mu\text{g}/\text{m}^3$
	ANNUAL	40	$\mu\text{g}/\text{m}^3$
RSP	10TH DAILY	100	$\mu\text{g}/\text{m}^3$
	ANNUAL	50	$\mu\text{g}/\text{m}^3$
FSP	19TH DAILY (Gov.)	50	$\mu\text{g}/\text{m}^3$
	36TH DAILY	50	$\mu\text{g}/\text{m}^3$
	ANNUAL	25	$\mu\text{g}/\text{m}^3$

Rev	Description	By	Date
Consultant			
Project title			
AGREEMENT NO. CE17/2019 (CE) TECHNICAL STUDY ON PARTIAL DEVELOPMENT OF FANLING GOLF COURSE SITE - FEASIBILITY STUDY			
Drawing title			
CONTOURS OF CUMULATIVE ANNUAL PM2.5 CONCENTRATION AT 1.5MAG OPERATIONAL PHASE			
Drawing no.		Rev.	
FIGURE 3.6g		-	
Drawn	Date	Checked	Approved
SC	MAY2022	CY	CCK
Scale	Status		
1:5000 (A3)	-		

© COPYRIGHT RESERVED

土木工程拓展署  
 CIVIL ENGINEERING AND DEVELOPMENT  
 DEPARTMENT  
 NORTH DEVELOPMENT OFFICE