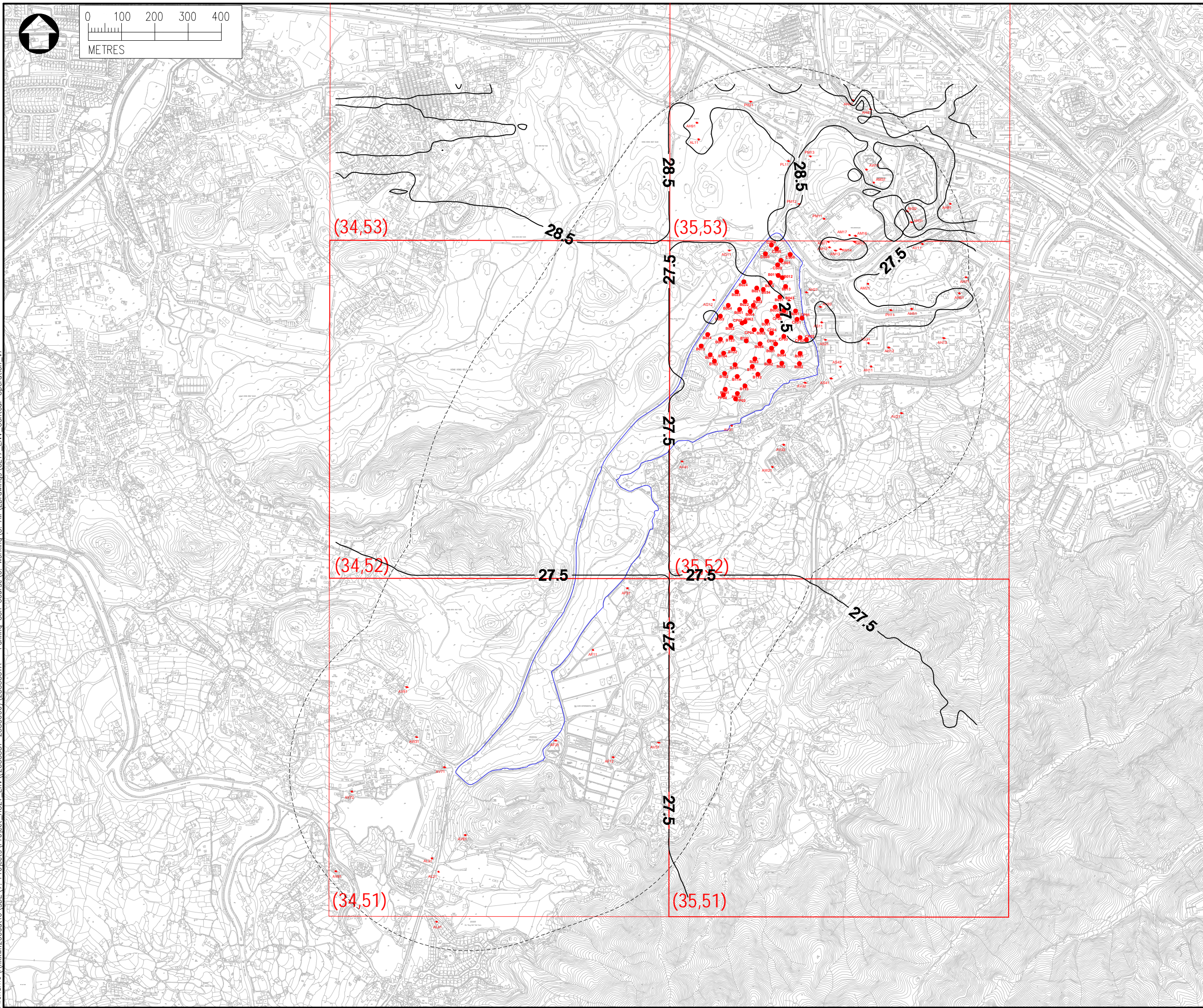


Date : 2022-05-05
 Filename : \\hkwn\200dat16_SDE\7_Projects\Project_H321_Env\2535551-2535600\2535551A - Fanling Golf Course 6_Working\3_Air\Drawings\CE17_Env_Contour Operation_v7



NOTES :

1. ALL DIMENSIONS ARE IN MILLIMETRES UNLESS OTHERWISE STATED.
2. ALL LEVELS ARE IN METRES (M) AND RELATIVE TO HONG KONG PRINCIPAL DATUM (mPD).

LEGEND :

- PROJECT AREA
- - - - 500m ASSESSMENT AREA
- CONCENTRATIONS in ($\mu\text{g}/\text{m}^3$)

AQO LIMIT OF CONCENTRATIONS

NO2	19TH HOURLY	200	$\mu\text{g}/\text{m}^3$
	ANNUAL	40	$\mu\text{g}/\text{m}^3$
RSP	10TH DAILY	100	$\mu\text{g}/\text{m}^3$
	ANNUAL	50	$\mu\text{g}/\text{m}^3$
FSP	19TH DAILY (Gov.)	50	$\mu\text{g}/\text{m}^3$
	36TH DAILY	50	$\mu\text{g}/\text{m}^3$
	ANNUAL	25	$\mu\text{g}/\text{m}^3$

Rev	Description	By	Date

Consultant



Project title
**AGREEMENT NO. CE17/2019 (CE)
 TECHNICAL STUDY ON PARTIAL DEVELOPMENT
 OF FANLING GOLF COURSE SITE
 – FEASIBILITY STUDY**

Drawing title
**CONTOURS OF CUMULATIVE
 ANNUAL PM10
 CONCENTRATION AT 1.5MAG
 OPERATIONAL PHASE**

Drawing no. FIGURE 3.6d		Rev. —	
Drawn SC	Date MAY2022	Checked CY	Approved CCK
Scale 1:5000 (A3)		Status —	

© COPYRIGHT RESERVED



**土木工程拓展署
 CIVIL ENGINEERING AND DEVELOPMENT
 DEPARTMENT**
 NORTH DEVELOPMENT OFFICE