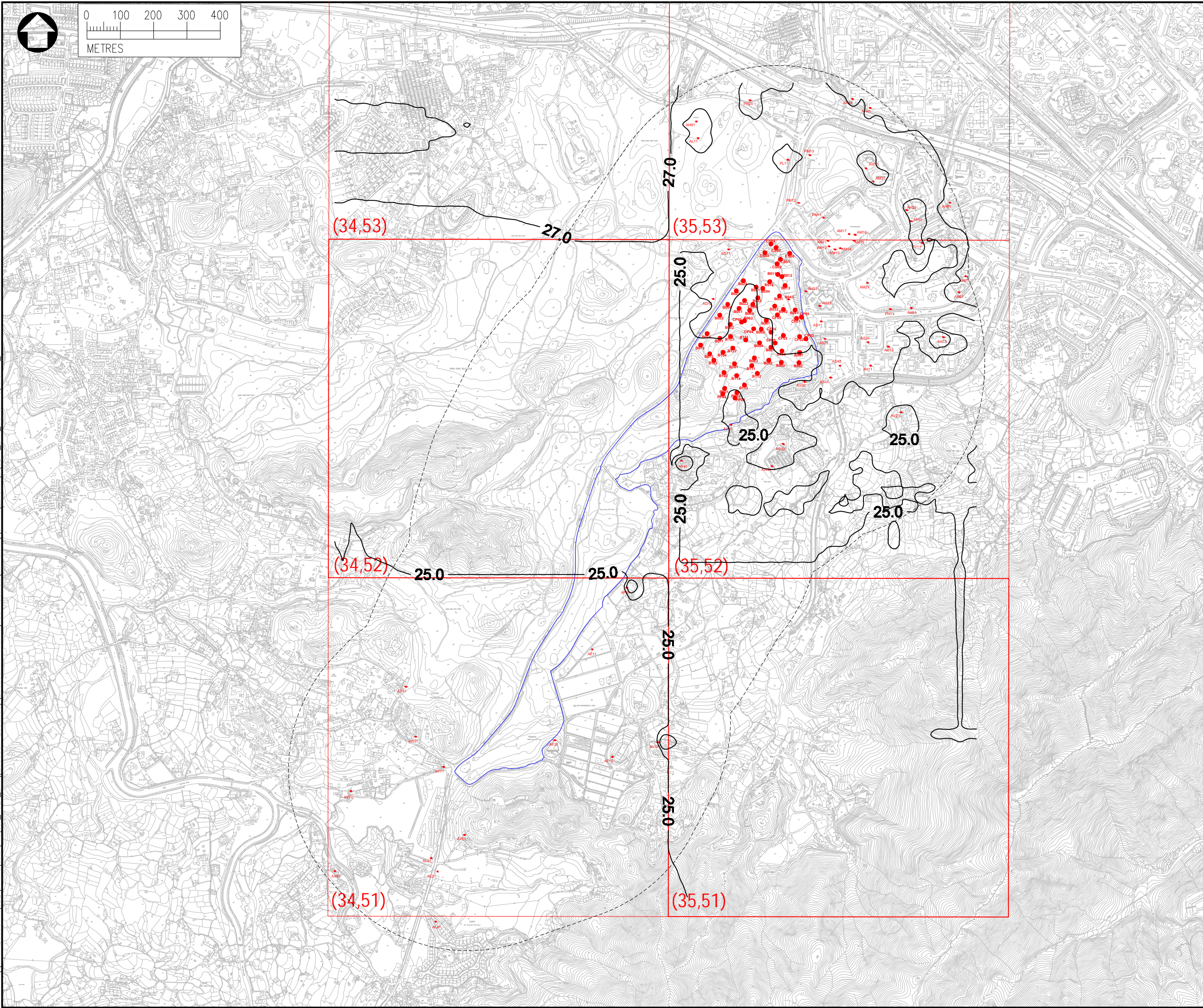


Date : 2022-05-05
 Filename : \\hkwn200dat16_SDE\7_Projects\Project_H321_Env\2535551-2535600\2535551A - Fanling Golf Course 6_Working\3_Air\Drawings\CE17_Env_Contour_Operation_v7



NOTES :

1. ALL DIMENSIONS ARE IN MILLIMETRES UNLESS OTHERWISE STATED.
2. ALL LEVELS ARE IN METRES (M) AND RELATIVE TO HONG KONG PRINCIPAL DATUM (mPD).

LEGEND :

- PROJECT AREA
- - - - - 500m ASSESSMENT AREA
- CONCENTRATIONS in ($\mu\text{g}/\text{m}^3$)

AQO LIMIT OF CONCENTRATIONS

NO2	19TH HOURLY	200	$\mu\text{g}/\text{m}^3$
	ANNUAL	40	$\mu\text{g}/\text{m}^3$
RSP	10TH DAILY	100	$\mu\text{g}/\text{m}^3$
	ANNUAL	50	$\mu\text{g}/\text{m}^3$
FSP	19TH DAILY (Gov.)	50	$\mu\text{g}/\text{m}^3$
	36TH DAILY	50	$\mu\text{g}/\text{m}^3$
	ANNUAL	25	$\mu\text{g}/\text{m}^3$

Rev	Description
By	Date
Consultant	
Project title AGREEMENT NO. CE17/2019 (CE) TECHNICAL STUDY ON PARTIAL DEVELOPMENT OF FANLING GOLF COURSE SITE - FEASIBILITY STUDY	
Drawing title CONTOURS OF CUMULATIVE 36TH DAILY PM2.5 CONCENTRATION AT 1.5MAG OPERATIONAL PHASE	
Drawing no.	Rev.
Drawn	Date
SC	MAY2022
Checked	CY
Approved	CCK
Scale	Status
1:5000 (A3)	-
© COPYRIGHT RESERVED	
土木工程拓展署 CIVIL ENGINEERING AND DEVELOPMENT DEPARTMENT NORTH DEVELOPMENT OFFICE	