

Date : 11/2/2021
 Filename : \\hkww2000at16\sd7 - Projects\Project_H321_Env (2535551 - 2535600)\2535551A - Fanling Golf Course V5. Deliverables\5. EIA\Fig_working\Fig 4.5.1a - NAP_v4.2

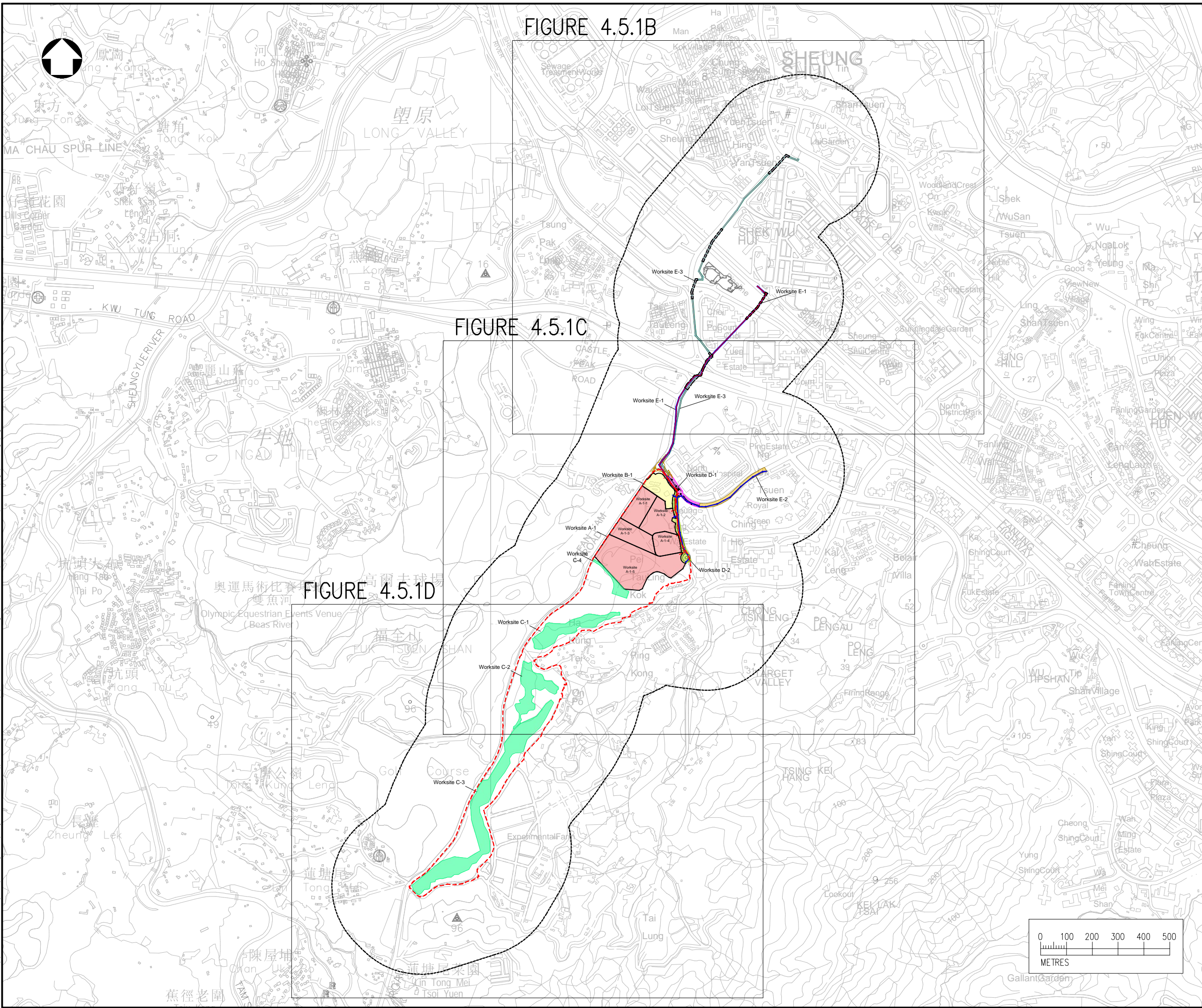


FIGURE 4.5.1B

FIGURE 4.5.1C

FIGURE 4.5.1D

- NOTES :**
1. ALL DIMENSIONS ARE IN MILLIMETRES UNLESS OTHERWISE STATED.
 2. ALL LEVELS ARE IN METRES (M) AND RELATIVE TO HONG KONG PRINCIPAL DATUM (mPD).

LEGEND :

■■■■ PROJECT BOUNDARY

Rev	Description	By	Date

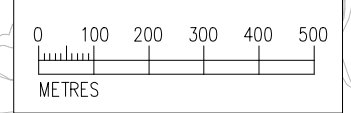


Project title
**AGREEMENT NO. CE17/2019 (CE)
 TECHNICAL STUDY ON PARTIAL DEVELOPMENT
 OF FANLING GOLF COURSE SITE
 – FEASIBILITY STUDY**

Drawing title
**NOISE ASSESSMENT POINT FOR
 CONSTRUCTION NOISE IMPACT
 ASSESSMENT**

PLAN

Drawing no. FIGURE 4.5.1A		Rev. —	
Drawn TL	Date 12/2021	Checked CCK	Approved DL
Scale		Status	

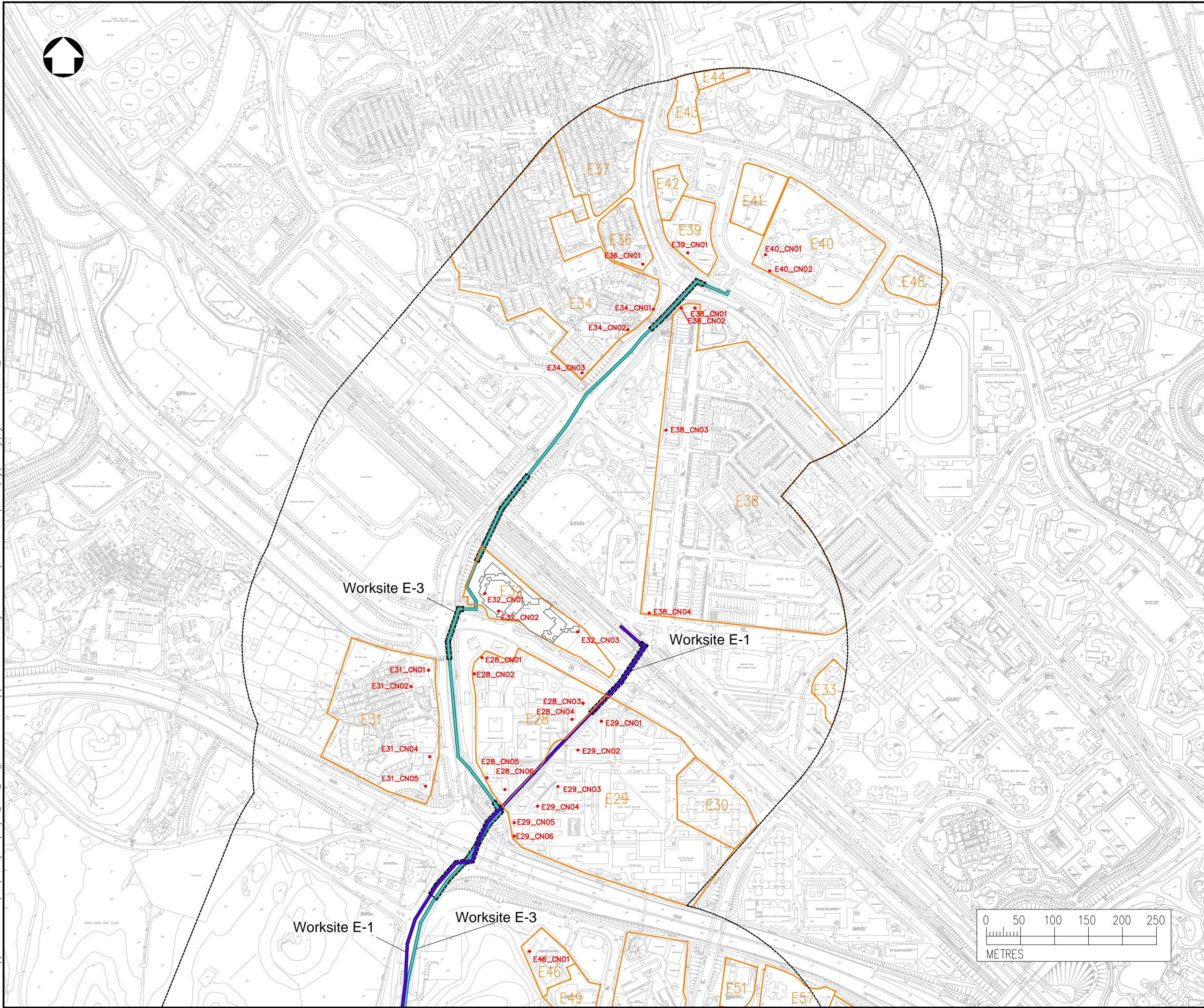


© COPYRIGHT RESERVED

**土木工程發展署
 CIVIL ENGINEERING AND DEVELOPMENT
 DEPARTMENT**

NORTH DEVELOPMENT OFFICE

Date : 11/2/2021
 Filename : \\hkwn2000at16\sd\7 - Projects\Project_H321_Env\2535551 - 2535600\2535551A - Fanling Golf Course\5. Deliverables\5. EIA\Fig_working\Fig 4.5.1bcd - NAP_v4.2



NOTES :

1. ALL DIMENSIONS ARE IN MILLIMETRES UNLESS OTHERWISE STATED.
2. ALL LEVELS ARE IN METRES (M) AND RELATIVE TO HONG KONG PRINCIPAL DATUM (mPD).

LEGEND :

- PROJECT BOUNDARY
- 300m ASSESSMENT AREA
- A-1: PUBLIC HOUSING SITE AT ZONE 1
- B-1: SCHOOL SITE
- C-1 TO C-4: LANDSCAPING WORKS AT ZONE 2 TO ZONE 4 AND PASSIVE RECREATIONAL FACILITIES AND ANCILLARY FACILITIES
- D-1: JUNCTION IMPROVEMENT AT PO KIN ROAD & PING KONG ROAD AND UTILITIES WORKS
- D-2: ROAD MODIFICATION OF PING KONG ROAD AND UTILITIES WORKS
- E-1: INFRASTRUCTURE WORKS (SEWER LAYING)
- E-2: INFRASTRUCTURE WORKS (DRAINAGE PIPE LAYING)
- E-3: INFRASTRUCTURE WORKS (FRESH WATERMAINS & FLUSHING WATERMAINS)
- EXTENT OF TRENCHLESS METHOD
- E40_CN01 NOISE ASSESSMENT POINT

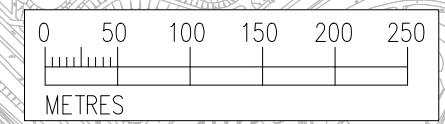
Rev	Description	By	Date



Project title
**AGREEMENT NO. CE17/2019 (CE)
 TECHNICAL STUDY ON PARTIAL DEVELOPMENT
 OF FANLING GOLF COURSE SITE
 - FEASIBILITY STUDY**

Drawing title
**NOISE ASSESSMENT POINT FOR
 CONSTRUCTION NOISE IMPACT
 ASSESSMENT**

Drawing no. FIGURE 4.5.1B		Rev. —	
Drawn TL	Date 11/2021	Checked CCK	Approved DL
Scale		Status	

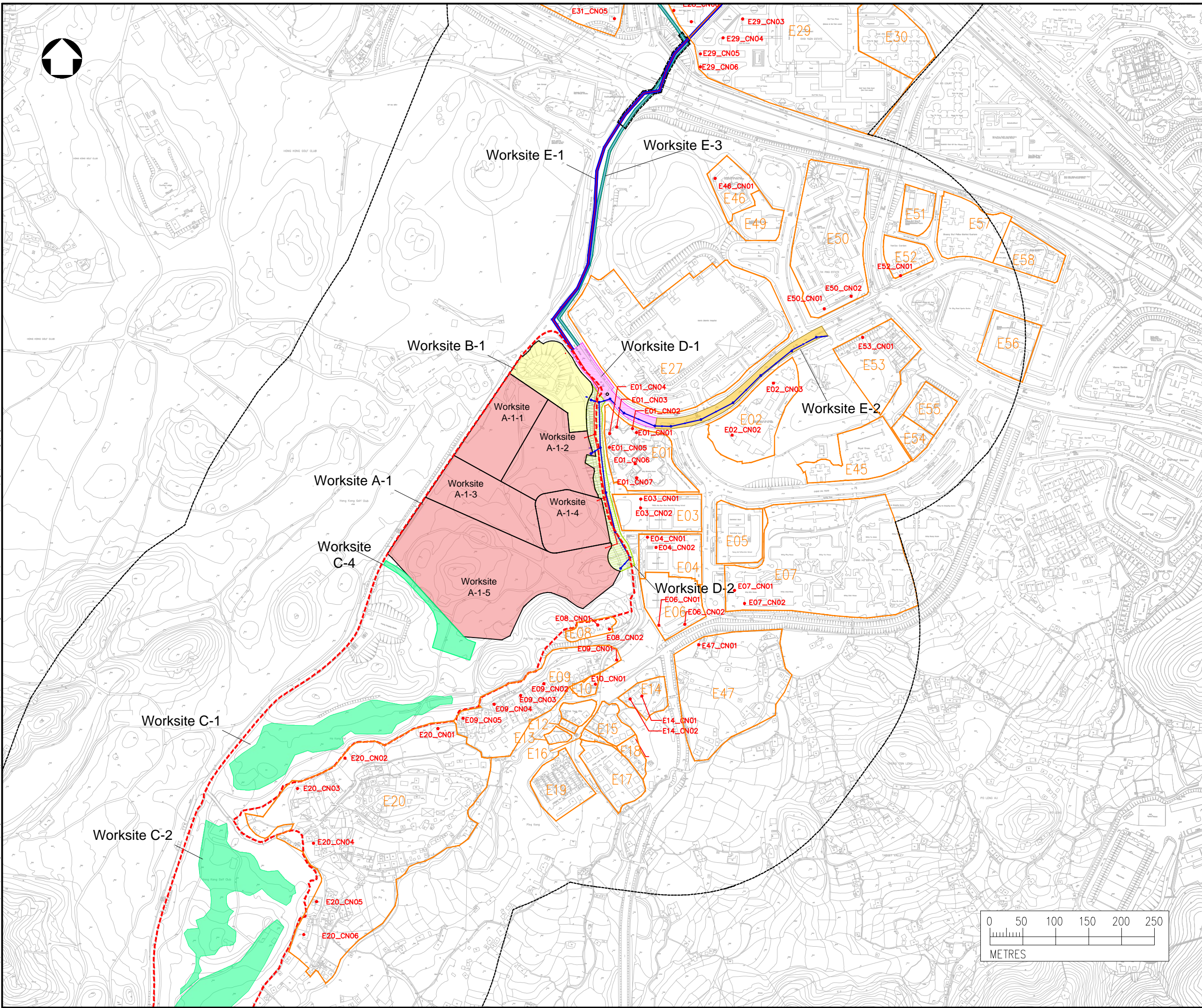


© COPYRIGHT RESERVED

**土木工程拓展署
 CIVIL ENGINEERING AND DEVELOPMENT
 DEPARTMENT**
 NORTH DEVELOPMENT OFFICE



Date : 11/2/2021
Filename : \\hkw2000at16\sd\7. Projects\Project_H321_Env (2535551 - 2535600)\2535551A - Fanling Golf Course - NAP_v4.2



NOTES :

1. ALL DIMENSIONS ARE IN MILLIMETRES UNLESS OTHERWISE STATED.
2. ALL LEVELS ARE IN METRES (M) AND RELATIVE TO HONG KONG PRINCIPAL DATUM (mPD).

LEGEND :

- PROJECT BOUNDARY
- 300m ASSESSMENT AREA
- A-1: PUBLIC HOUSING SITE AT ZONE 1
- B-1: SCHOOL SITE
- C-1 TO C-4: LANDSCAPING WORKS AT ZONE 2 TO ZONE 4 AND PASSIVE RECREATIONAL FACILITIES AND ANCILLARY FACILITIES
- D-1: JUNCTION IMPROVEMENT AT PO KIN ROAD & PING KONG ROAD AND UTILITIES WORKS
- D-2: ROAD MODIFICATION OF PING KONG ROAD AND UTILITIES WORKS
- E-1: INFRASTRUCTURE WORKS (SEWER LAYING)
- E-2: INFRASTRUCTURE WORKS (DRAINAGE PIPE LAYING)
- E-3: INFRASTRUCTURE WORKS (FRESH WATERMAINS & FLUSHING WATERMAINS)
- EXTENT OF TRENCHLESS METHOD
- E40_CN01 NOISE ASSESSMENT POINT

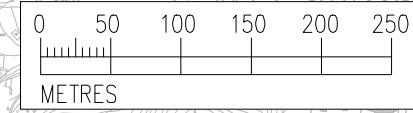
Rev	Description	By	Date



Project title
**AGREEMENT NO. CE17/2019 (CE)
 TECHNICAL STUDY ON PARTIAL DEVELOPMENT
 OF FANLING GOLF COURSE SITE
 - FEASIBILITY STUDY**

Drawing title
**NOISE ASSESSMENT POINT FOR
 CONSTRUCTION NOISE IMPACT
 ASSESSMENT**

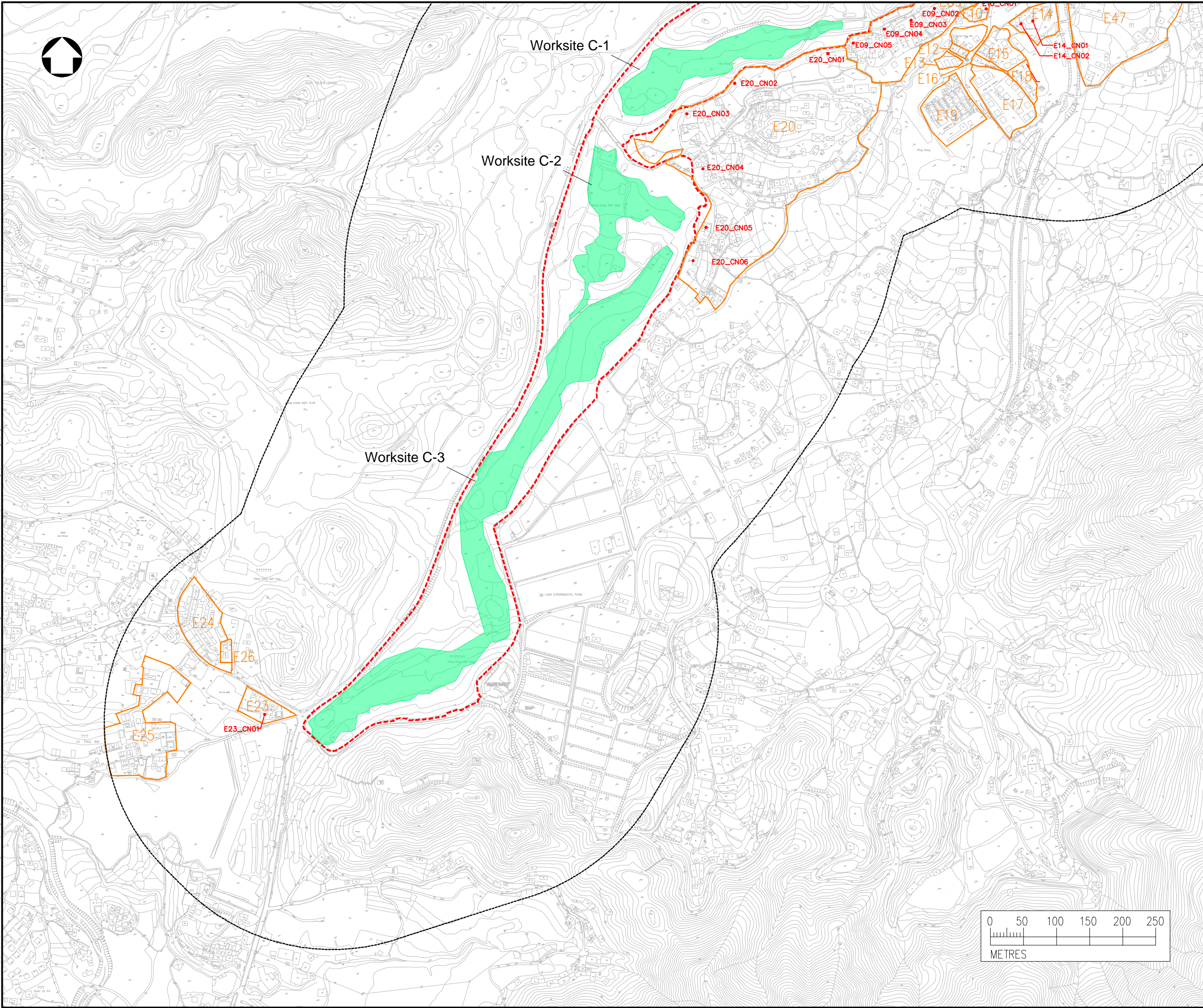
Drawing no. FIGURE 4.5.1C		Rev. —
Drawn TL	Date 11/2021	Checked CCK
Scale	Status	Approved DL



© COPYRIGHT RESERVED

**土木工程發展署
 CIVIL ENGINEERING AND DEVELOPMENT
 DEPARTMENT**
 NORTH DEVELOPMENT OFFICE

Date : 11/2/2021
 Filename : \\hkwn2000at16\sd\7. Projects\Project_H321_Env\2535551-2535600\2535551A - Fanling Golf Course\5. Deliverables\5. EIA\Fig_working\Fig 4.5.1bcd - NAP_v4.2



NOTES :

1. ALL DIMENSIONS ARE IN MILLIMETRES UNLESS OTHERWISE STATED.
2. ALL LEVELS ARE IN METRES (M) AND RELATIVE TO HONG KONG PRINCIPAL DATUM (mPD).

LEGEND :

- - - - PROJECT BOUNDARY
- 300m ASSESSMENT AREA
- A-1: PUBLIC HOUSING SITE AT ZONE 1
- B-1: SCHOOL SITE
- C-1 TO C-4: LANDSCAPING WORKS AT ZONE 2 TO ZONE 4 AND PASSIVE RECREATIONAL FACILITIES AND ANCILLARY FACILITIES
- D-1: JUNCTION IMPROVEMENT AT PO KIN ROAD & PING KONG ROAD AND UTILITIES WORKS
- D-2: ROAD MODIFICATION OF PING KONG ROAD AND UTILITIES WORKS
- E-1: INFRASTRUCTURE WORKS (SEWER LAYING)
- E-2: INFRASTRUCTURE WORKS (DRAINAGE PIPE LAYING)
- E-3: INFRASTRUCTURE WORKS (FRESH WATERMANS & FLUSHING WATERMANS)
- EXTENT OF TRENCHLESS METHOD
- E40_CN01 NOISE ASSESSMENT POINT

Rev	Description	By	Date



Project title
**AGREEMENT NO. CE17/2019 (CE)
 TECHNICAL STUDY ON PARTIAL DEVELOPMENT
 OF FANLING GOLF COURSE SITE
 - FEASIBILITY STUDY**

Drawing title
**NOISE ASSESSMENT POINT FOR
 CONSTRUCTION NOISE IMPACT
 ASSESSMENT**

Drawing no. FIGURE 4.5.1D		Rev. -	
Drawn TL	Date 11/2021	Checked CCK	Approved DL
Scale		Status	-

© COPYRIGHT RESERVED

**土木工程發展署
 CIVIL ENGINEERING AND DEVELOPMENT
 DEPARTMENT**
 NORTH DEVELOPMENT OFFICE

