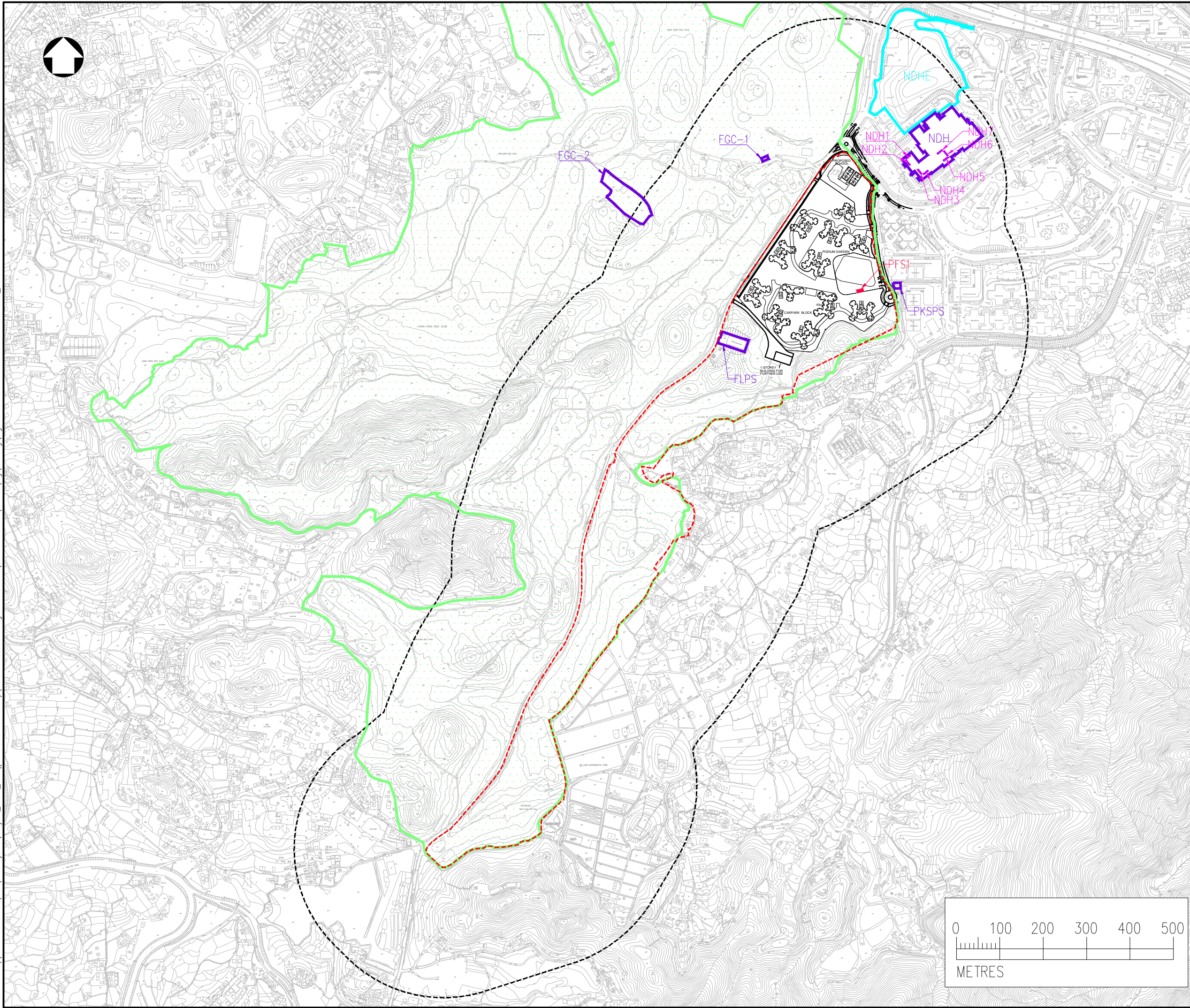


Date : 9/30/2021
 Filename : \\hkwin2000at16\sd\7 - Projects\Project_H321_Env\2535551-2535600\2535551A - Fanning Golf Course\5. Deliverables\5. EIA\Fig_working\Fig 4.7.3 - Locations Of Fixed Sources_2



NOTES :

1. ALL DIMENSIONS ARE IN MILLIMETRES UNLESS OTHERWISE STATED.
2. ALL LEVELS ARE IN METRES (M) AND RELATIVE TO HONG KONG PRINCIPAL DATUM (mPD).

LEGEND :

- - - PROJECT BOUNDARY
- - - - 300M ASSESSMENT AREA
- EXISTING FANLING GOLF COURSE
- EXISTING FIXED SOURCES
- PLANNED FIXED SOURCES (UNDER THE PROJECT)
- PLANNED FIXED SOURCES (BY OTHERS)

| Rev | Description | By | Date |
|-----|-------------|----|------|
| | | | |



Project title
**AGREEMENT NO. CE17/2019 (CE)
 TECHNICAL STUDY ON PARTIAL DEVELOPMENT
 OF FANLING GOLF COURSE SITE
 – FEASIBILITY STUDY**

Drawing title
**LOCATIONS OF IDENTIFIED FIXED
 NOISE SOURCES**

| | | | |
|------------------------------------|-----------------|----------------|----------------|
| Drawing no. FIGURE 4.7.3 | | Rev. — | |
| Drawn CH | Date 09/2021 | Checked CCK | Approved DL |
| Scale AS SHOWN | | Status — | |

© COPYRIGHT RESERVED

土木工程拓展署
 CIVIL ENGINEERING AND DEVELOPMENT
 DEPARTMENT
 NORTH DEVELOPMENT OFFICE

