



香港高爾夫球會
HONG KONG GOLF CLUB

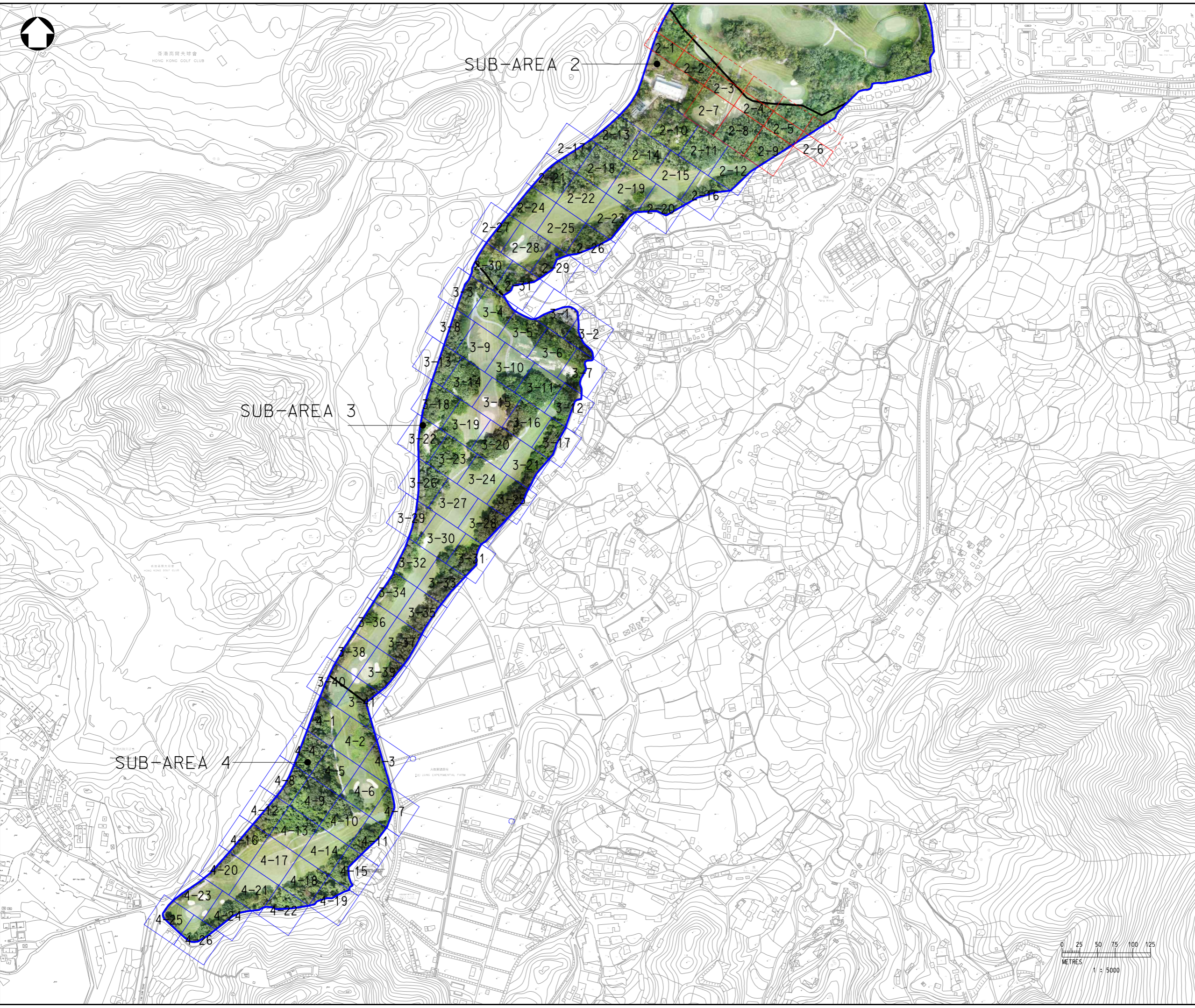
SUB-AREA 2

SUB-AREA 3

SUB-AREA 4

- LEGEND :
- RURAL RESIDENTIAL OR URBAN RESIDENTIAL, WHICHEVER MORE STRINGENT
 - PUBLIC PARK
 - 2-1
3-1
4-1 GRID ID

Date : 5/4/2022
Filename : X:\2514331A_CE17-2019 (FL GOLF COURSE)\02_Drawing\Figure\CE17_Fig_004.2.dgn



Rev	Description	By	Date
Consultant			
Project title			
AGREEMENT NO. CE17/2019 (CE) TECHNICAL STUDY ON PARTIAL DEVELOPMENT OF FANLING GOLF COURSE SITE - FEASIBILITY STUDY			
Drawing title			
PROPOSED RBRGs LAND USE AT SUB-AREAS 2 TO 4			
Drawing no.			Rev.
FIGURE 2.7			-
Drawn	Date	Checked	Approved
CAD	10/12/19	SF	EW
Scale	1:5000 (A3)		Status
-			

© COPYRIGHT RESERVED

土木工程拓展署
CIVIL ENGINEERING AND DEVELOPMENT
DEPARTMENT
北拓展處
NORTH DEVELOPMENT OFFICE