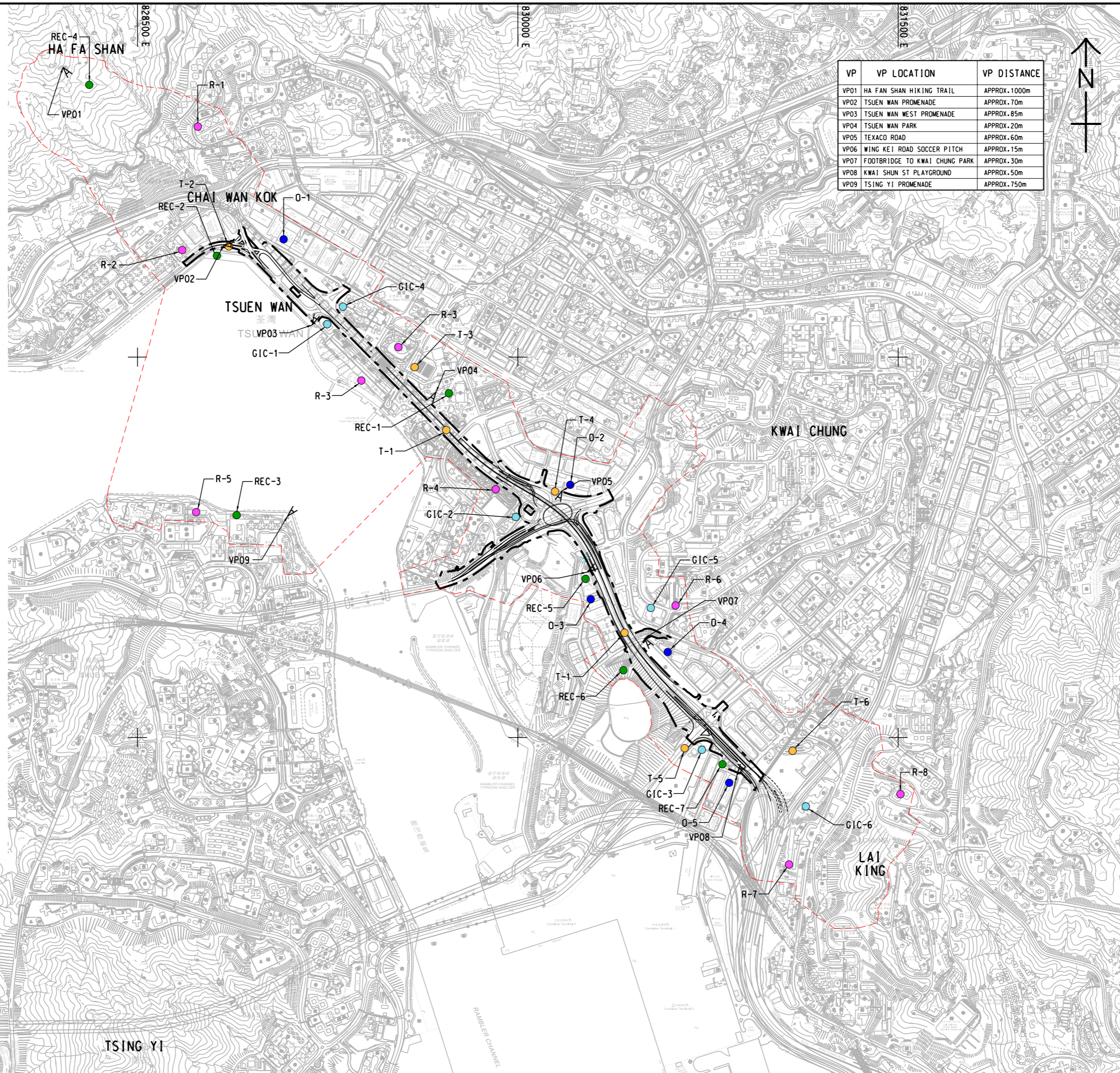


LEGEND:

- SITE BOUNDARY
- VISUAL ENVELOPE
- VP-1**
- PROPOSED VIEWPOINTS
- RESIDENTIAL VSR
- RECREATIONAL VSR
- G/IC VSR
- OCCUPATIONAL VSR
- TRAVELLING VSR
- VSR**
- RESIDENTIAL VSR**
- R-1 RESIDENTIAL DEVELOPMENTS ALONG TSUEN KING CIRCUIT
- R-2 RESIDENTIAL DEVELOPMENTS ALONG HOI ON ROAD
- R-3 RESIDENTIAL DEVELOPMENTS NEAR TSUEN WAN WEST STATION
- R-4 RESIDENTIAL DEVELOPMENTS NEAR TSUEN TSING INTERCHANGE
- R-5 RESIDENTIAL DEVELOPMENTS ALONG TSING YI PROMENADE
- R-6 RESIDENTIAL DEVELOPMENTS ALONG KWAI SHING CIRCUIT
- R-7 RESIDENTIAL DEVELOPMENTS NEAR LAI KING STATION
- R-8 RESIDENTIAL DEVELOPMENTS ALONG WAH YIU ROAD
- RECREATIONAL VSR**
- REC-1 TSUEN WAN PARK
- REC-2 TSUEN WAN PROMENADE
- REC-3 TSING YI PROMENADE
- REC-4 HIKERS AT HA FA SHAN
- REC-5 WING KEI ROAD 5-A-SIDE SOCCER PITCH
- REC-6 KWAI CHUNG PARK
- REC-7 KWAI SHUN STREET PLAYGROUND
- G/IC VSR**
- GIC-1 WORKERS OF TSUEN WAN SALTWATER PUMPING STATION
- GIC-2 WORKERS OF TSUEN WAN SEWAGE PUMPING STATION AND TSUEN WAN SOUTH ELECTRIC SUBSTATION
- GIC-3 WORKERS OF KWAI CHUNG INDUSTRIAL WASTEWATER PUMPING STATION
- GIC-4 THE SALVATION ARMY NG KWOK WAI MEMORIAL KINDERGARTEN
- GIC-5 SCHOOL ALONG KWAI SHING CIRCUIT
- GIC-6 SCHOOLS ALONG LAI KING HILL ROAD
- OCCUPATIONAL VSR**
- O-1 WORKERS IN INDUSTRIAL OR OFFICE BUILDINGS ALONG HOI SHING ROAD
- O-2 WORKERS IN INDUSTRIAL OR OFFICE BUILDINGS ALONG TEXACO ROAD
- O-3 WORKERS IN INDUSTRIAL OR OFFICE BUILDINGS ALONG WING KEI ROAD
- O-4 WORKERS IN INDUSTRIAL OR OFFICE BUILDINGS ALONG KWAI HEI ROAD
- O-5 WORKERS IN INDUSTRIAL OR OFFICE BUILDINGS ALONG CONTAINER PORT ROAD
- TRAVELLING VSR**
- T-1 TRAVELLER ALONG TSUEN WAN ROAD
- T-2 TRAVELLER ALONG HOI HING ROAD AND HOI ON ROAD
- T-3 TRAVELLER AT NINA TOWER BUS TERMINUS
- T-4 TRAVELLER NEAR TSUEN TSING INTERCHANGE
- T-5 TRAVELLER ALONG KWAI TSING ROAD AND HING FONG ROAD
- T-6 TRAVELLER AT KWAI FONG (SOUTH) BUS TERMINUS



VP	VP LOCATION	VP DISTANCE
VP01	HA FAN SHAN HIKING TRAIL	APPROX. 1000m
VP02	TSUEN WAN PROMENADE	APPROX. 70m
VP03	TSUEN WAN WEST PROMENADE	APPROX. 85m
VP04	TSUEN WAN PARK	APPROX. 20m
VP05	TEXACO ROAD	APPROX. 60m
VP06	WING KEI ROAD SOCCER PITCH	APPROX. 15m
VP07	FOOTBRIDGE TO KWAI CHUNG PARK	APPROX. 30m
VP08	KWAI SHUN ST PLAYGROUND	APPROX. 50m
VP09	TSING YI PROMENADE	APPROX. 750m

AECOM

PROJECT
WIDENING OF TSUEN WAN ROAD AND THE ASSOCIATED JUNCTION IMPROVEMENT WORKS

CLIENT
路政署
HIGHWAYS DEPARTMENT

CONSULTANT
AECOM Asia Company Ltd.
www.aecom.com

SUB-CONSULTANTS
分列工程顧問公司

ISSUE/REVISION

I/R	DATE	DESCRIPTION	CHK.

STATUS

SCALE
A1 1:7500

DIMENSION UNIT
METRES

KEY PLAN

PROJECT NO.
60607462

AGREEMENT NO.
CE61/2018(HY)

SHEET TITLE
VISUAL ENVELOPE, VISUALLY SENSITIVE RECEIVERS AND VIEWING POINTS WITH DEVELOPMENT PROPOSAL OVERLAIN

SHEET NUMBER
60607462/R27/FIGURE 11.24

This drawing has been prepared for the use of AECOM's client. It may not be used, modified, reproduced or relied upon by third parties, except as agreed by AECOM or as required by law. AECOM accepts no responsibility, and disclaims any liability whatsoever, for any error, omission or delay in this drawing without AECOM's express written consent. All measurements must be obtained from the master dimensions.