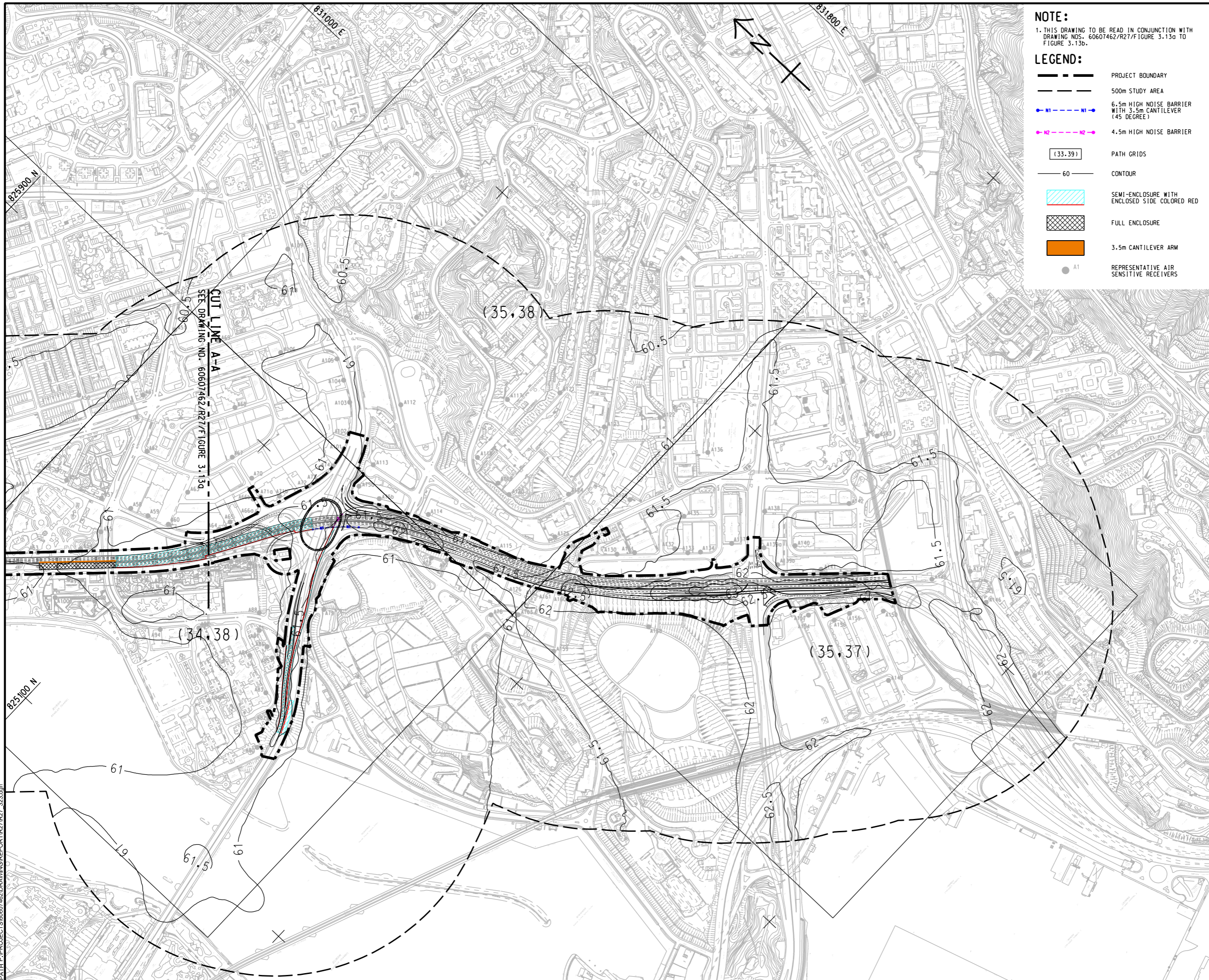


ISO A1 594mm x 841mm
 Approved:
 Checked:
 Designer:
 Project Management Initials:
 Plot File by: WANGDF
 PATH P:\PROJECTS\60607462\DRAWING\REPORT\R27\R27_323.dgn
 8/12/2023



NOTE:
 1. THIS DRAWING TO BE READ IN CONJUNCTION WITH DRAWING NOS. 60607462/R27/FIGURE 3.13a TO FIGURE 3.13d.

- LEGEND:**
- PROJECT BOUNDARY
 - 500m STUDY AREA
 - 6.5m HIGH NOISE BARRIER WITH 3.5m CANTILEVER (45 DEGREE)
 - 4.5m HIGH NOISE BARRIER
 - PATH GRIDS
 - CONTOUR
 - SEMI-ENCLOSURE WITH ENCLOSED SIDE COLORED RED
 - FULL ENCLOSURE
 - 3.5m CANTILEVER ARM
 - REPRESENTATIVE AIR SENSITIVE RECEIVERS



PROJECT
 WIDENING OF TSUEN WAN ROAD AND THE ASSOCIATED JUNCTION IMPROVEMENT WORKS

CLIENT
 路政署
 HIGHWAYS DEPARTMENT

CONSULTANT
 AECOM Asia Company Ltd.
 www.aecom.com

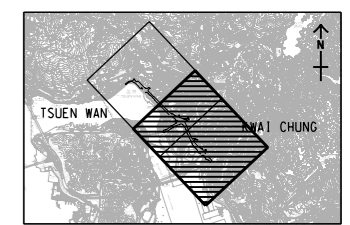
SUB-CONSULTANTS
 分判工程師有限公司

ISSUE/REVISION

IR	DATE	DESCRIPTION	CHK.

STATUS
 1/1/2023

SCALE **DIMENSION UNIT**
 A3 1 : 8000 METRES
 A3 1 : 200000



PROJECT NO. **AGREEMENT NO.**
 60607462 CE61/2018(HY)

SHEET TITLE
 CONTOURS OF CUMULATIVE 10TH HIGHEST DAILY AVERAGED RSP CONCENTRATION (µg/m³) AT 5mAG DURING OPERATION PHASE

SHEET NUMBER
 60607462/R27/FIGURE 3.13b

This drawing has been prepared for the use of AECOM's client. It may not be used, modified, reproduced or relied upon by third parties, except as agreed by AECOM or as required by law. AECOM accepts no responsibility, and denies any liability, whatsoever, for any part, that is used or relied on in this drawing without AECOM's express written consent. All measurements must be obtained from the stated dimensions.