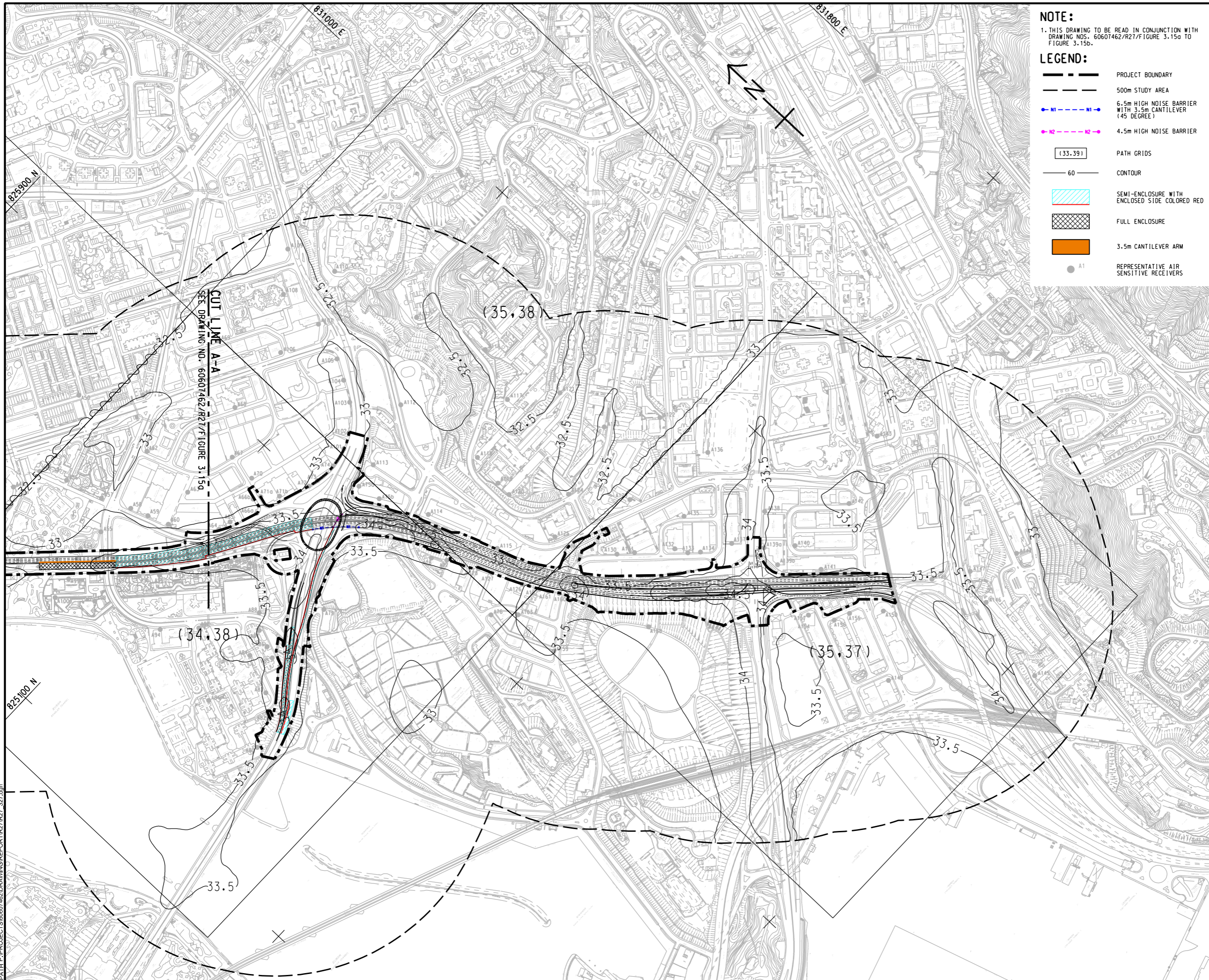


ISO A1 594mm x 841mm
 Approved:
 Checked:
 Designer:
 Project Management Initials:
 8/12/2023
 WANGDF
 60607462/DRAWING/REPORT/R27/R27_327.dgn



NOTE:
 1. THIS DRAWING TO BE READ IN CONJUNCTION WITH DRAWING NOS. 60607462/R27/Figure 3.15a TO FIGURE 3.15b.

- LEGEND:**
- PROJECT BOUNDARY
 - 500m STUDY AREA
 - 6.5m HIGH NOISE BARRIER WITH 3.5m CANTILEVER (45 DEGREE)
 - 4.5m HIGH NOISE BARRIER
 - PATH GRIDS
 - 60 CONTOUR
 - SEMI-ENCLOSURE WITH ENCLOSED SIDE COLORED RED
 - FULL ENCLOSURE
 - 3.5m CANTILEVER ARM
 - REPRESENTATIVE AIR SENSITIVE RECEIVERS



PROJECT
 WIDENING OF TSUEN WAN ROAD AND THE ASSOCIATED JUNCTION IMPROVEMENT WORKS

CLIENT
 路政署
 HIGHWAYS DEPARTMENT

CONSULTANT
 AECOM Asia Company Ltd.
 www.aecom.com

SUB-CONSULTANTS
 分行工程師有限公司

ISSUE/REVISION

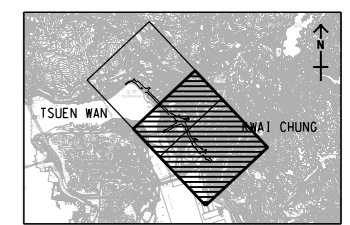
IR	DATE	DESCRIPTION	CHK.

STATUS
 1/1/20

SCALE
 A3 1 : 8000

DIMENSION UNIT
 METRES

KEY PLAN
 A3 1 : 200000



PROJECT NO.
 60607462

AGREEMENT NO.
 CE61/2018(HY)

SHEET TITLE
 CONTOURS OF CUMULATIVE 19TH HIGHEST DAILY AVERAGED FSP CONCENTRATION ($\mu\text{g}/\text{m}^3$) AT 5mAG DURING OPERATION PHASE

SHEET NUMBER
 60607462/R27/FIGURE 3.15b

SHEET 2 OF 2

This drawing has been prepared for the use of AECOM's client. It may not be used, modified, reproduced or relied upon by third parties, except as agreed by AECOM or as required by law. AECOM accepts no responsibility, and disclaims any liability, whatsoever, for any part, that is used or relied on in this drawing without AECOM's express written consent. All measurements must be obtained from the stated dimensions.