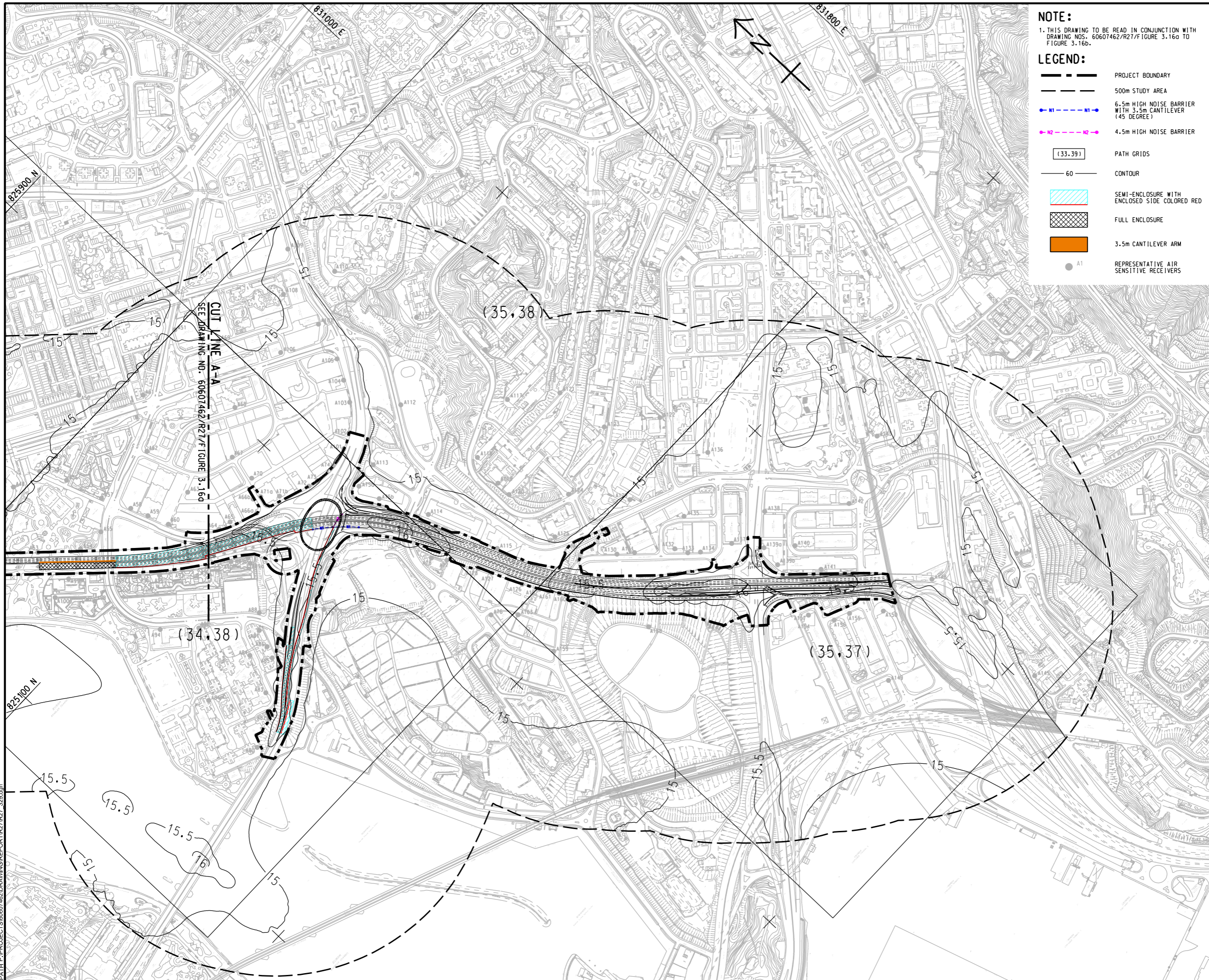


ISO A1 594mm x 841mm
 Approved:
 Checked:
 Designer:
 Project Management Initials:
 PLOT FILE BY: WANGDF 8/12/2023
 PATH P:\PROJECTS\60607462\DRAWING\REPORT\R27\R27_322.dgn



NOTE:
 1. THIS DRAWING TO BE READ IN CONJUNCTION WITH DRAWING NOS. 60607462/R27/F/FIGURE 3.16a TO FIGURE 3.16b.

LEGEND:

- PROJECT BOUNDARY
- 500m STUDY AREA
- 6.5m HIGH NOISE BARRIER WITH 3.5m CANTILEVER (45 DEGREE)
- 4.5m HIGH NOISE BARRIER
- PATH GRIDS
- 60 CONTOUR
- SEMI-ENCLOSURE WITH ENCLOSED SIDE COLORED RED
- FULL ENCLOSURE
- 3.5m CANTILEVER ARM
- REPRESENTATIVE AIR SENSITIVE RECEIVERS

AECOM

PROJECT
 WIDENING OF TSUEN WAN ROAD AND THE ASSOCIATED JUNCTION IMPROVEMENT WORKS

CLIENT
 路政署
 HIGHWAYS DEPARTMENT

CONSULTANT
 AECOM Asia Company Ltd.
 www.aecom.com

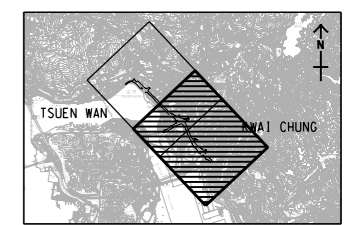
SUB-CONSULTANTS
 分行工程師公司

ISSUE/REVISION

NO.	DATE	DESCRIPTION	CHK.

STATUS
 10/12

SCALE	DIMENSION UNIT
A3 1 : 8000	METRES
KEY PLAN	A3 1 : 200000



PROJECT NO.
 60607462

AGREEMENT NO.
 CE61/2018(HY)

SHEET TITLE
 CONTOURS OF CUMULATIVE ANNUAL AVERAGED FSP CONCENTRATION (µg/m³) AT 5mAG DURING OPERATION PHASE

SHEET 2 OF 2

SHEET NUMBER
 60607462/R27/FIGURE 3.16b

This drawing has been prepared for the use of AECOM's client. It may not be used, modified, reproduced or relied upon by third parties, except as agreed by AECOM or as required by law. AECOM accepts no responsibility, and denies any liability whatsoever, for any part, that is used or relied on in this drawing without AECOM's express written consent. All measurements must be obtained from the stated dimensions.