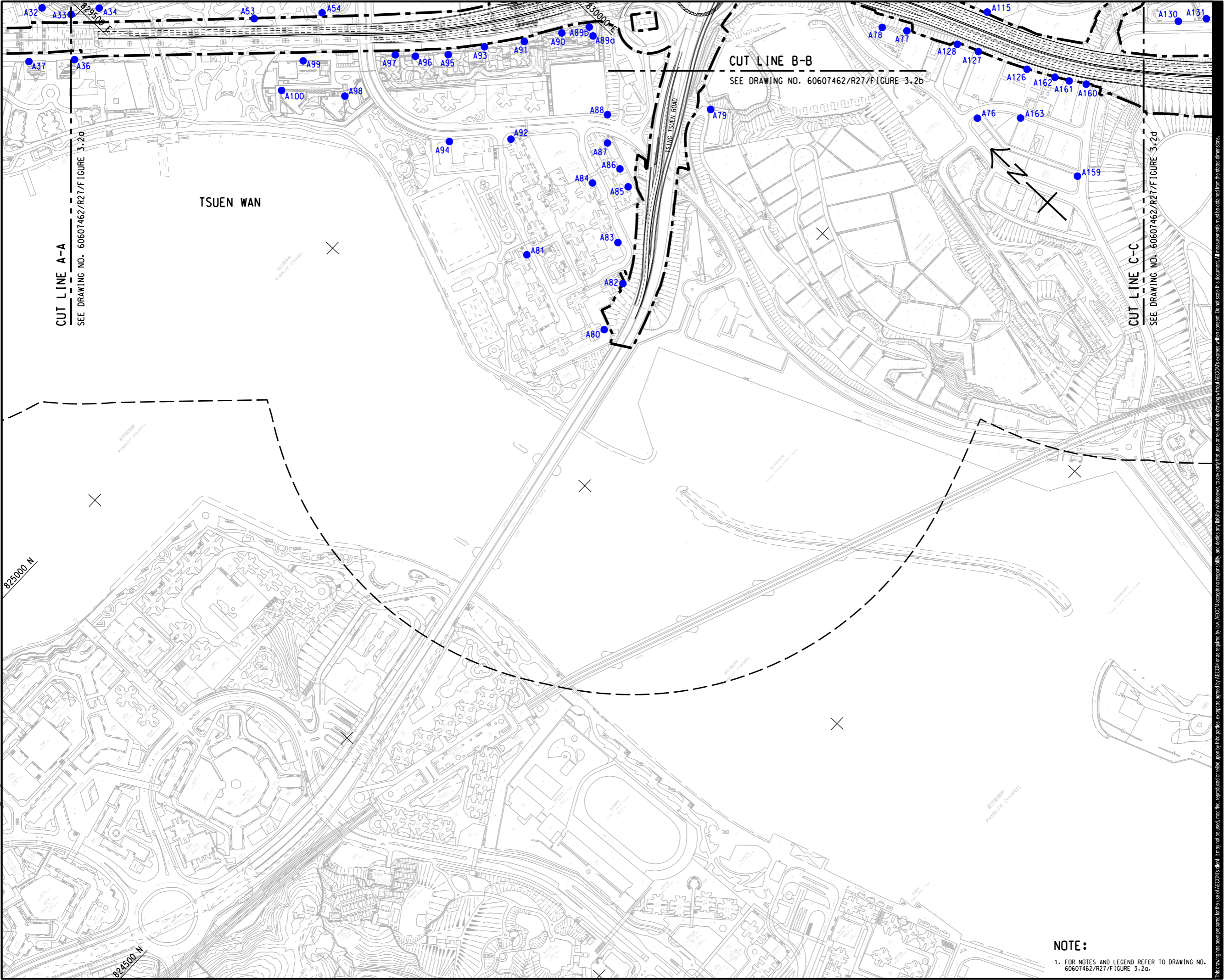


ISO A1 594mm x 841mm
 Approved:
 Checked:
 Designer:
 Project Management Initials:
 6/14/2023
 PATH PROJECTS\60607462\DRAWING\REPORT\R27\F27_304.dgn



PROJECT
 項目
 WIDENING OF TSUEN WAN ROAD
 AND THE ASSOCIATED JUNCTION
 IMPROVEMENT WORKS

CLIENT
 客戶

 路政署
HIGHWAYS DEPARTMENT

CONSULTANT
 顧問公司
 AECOM Asia Company Ltd.
 www.aecom.com

SUB-CONSULTANTS
 分判工程師/顧問公司

ISSUE/REVISION
 修訂

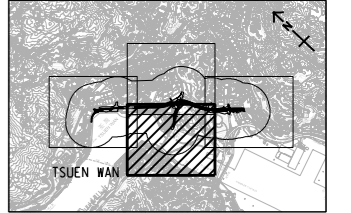
NO.	DATE	DESCRIPTION	CHK.

STATUS
 狀況

SCALE
 比例
 A3 1 : 5000

DIMENSION UNIT
 尺寸單位
 METRES

KEY PLAN
 索引圖
 A3 1 : 150000



PROJECT NO.
 項目編號
 60607462

AGREEMENT NO.
 協議編號
 CE61/2018(HY)

SHEET TITLE
 圖紙名稱
 LOCATIONS OF REPRESENTATIVE
 AIR SENSITIVE RECEIVERS

SHEET NUMBER
 圖紙編號
 60607462/R27/FIGURE 3.2c

NOTE :
 1. FOR NOTES AND LEGEND REFER TO DRAWING NO.
 60607462/R27/FIGURE 3.2a.

This drawing has been prepared for the use of AECOM's client. It may not be used, modified, reproduced or relied upon by third parties, except as agreed by AECOM or as required by law. AECOM accepts no responsibility, and denies any liability whatsoever, for any part, that, in whole or in part, is based on this drawing without AECOM's express written consent. All measurements must be obtained from the stated dimensions.