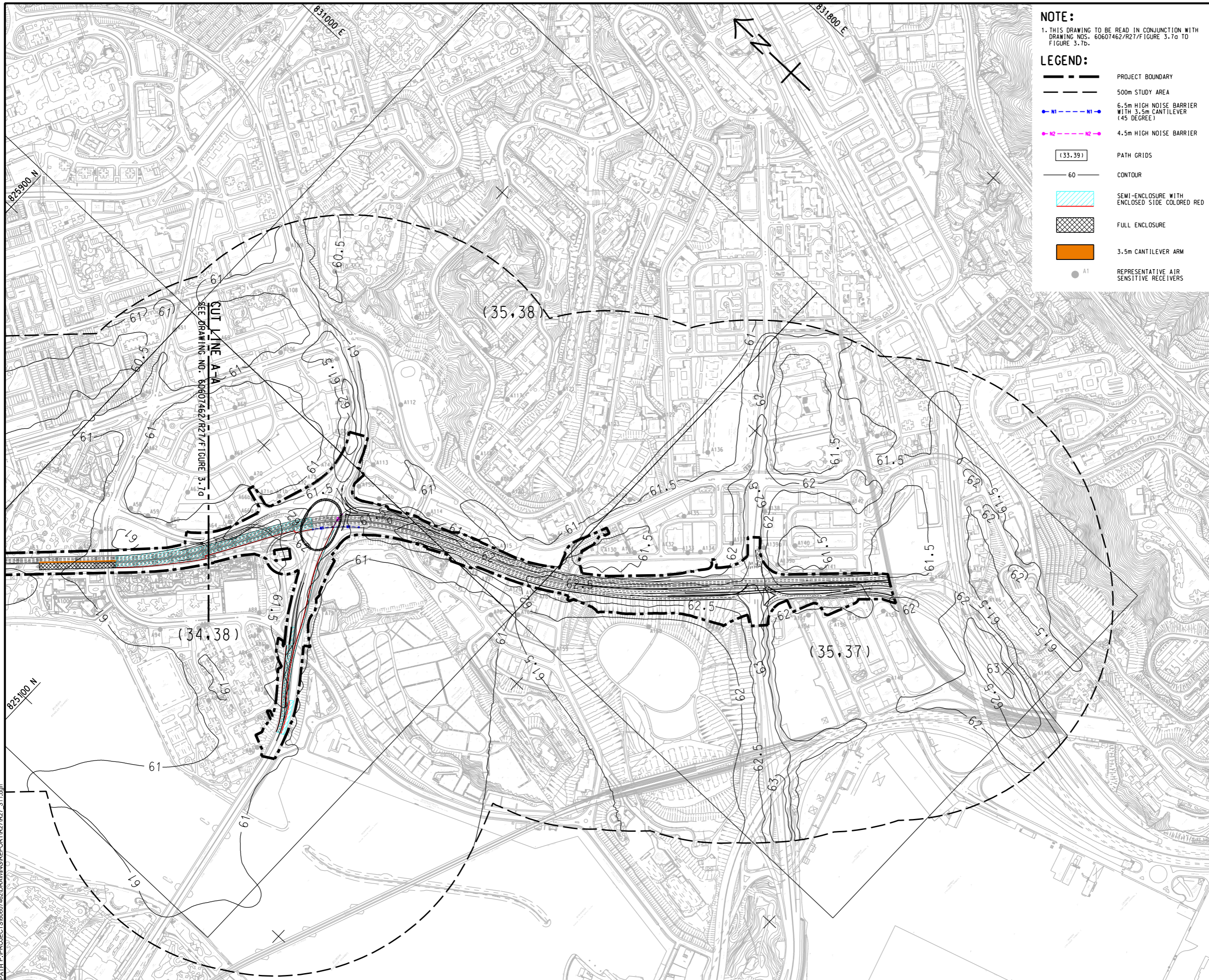


ISO A1 594mm x 841mm  
 Approved:  
 Checked:  
 Designer:  
 Project Management Initials:  
 Plot File by: WANGDF  
 PATH P:\PROJECTS\60607462\DRAWING\REPORT\R27\R27\_31.dgn  
 8/12/2023



**NOTE:**  
 1. THIS DRAWING TO BE READ IN CONJUNCTION WITH DRAWING NOS. 60607462/R27/F/FIGURE 3.7a TO FIGURE 3.7d.

- LEGEND:**
- PROJECT BOUNDARY
  - 500m STUDY AREA
  - 6.5m HIGH NOISE BARRIER WITH 3.5m CANTILEVER (45 DEGREE)
  - 4.5m HIGH NOISE BARRIER
  - PATH GRIDS
  - CONTOUR
  - SEMI-ENCLOSURE WITH ENCLOSED SIDE COLORED RED
  - FULL ENCLOSURE
  - 3.5m CANTILEVER ARM
  - REPRESENTATIVE AIR SENSITIVE RECEIVERS

**AECOM**

**PROJECT**  
 WIDENING OF TSUEN WAN ROAD AND THE ASSOCIATED JUNCTION IMPROVEMENT WORKS

**CLIENT**  
 路政署  
 HIGHWAYS DEPARTMENT

**CONSULTANT**  
 AECOM Asia Company Ltd.  
 www.aecom.com

**SUB-CONSULTANTS**  
 分行工程師公司

**ISSUE/REVISION**

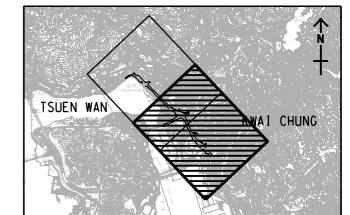
IR	DATE	DESCRIPTION	CHK.

**STATUS**

**SCALE**      **DIMENSION UNIT**

A3 1 : 8000      METRES

**KEY PLAN**      A3 1 : 200000



**PROJECT NO.**      **AGREEMENT NO.**  
 60607462      CE61/2018(HY)

**SHEET TITLE**  
 CONTOURS OF CUMULATIVE 10TH HIGHEST DAILY AVERAGED RSP CONCENTRATION (µg/m³) AT 1.5mAG DURING OPERATION PHASE

**SHEET NUMBER**  
 60607462/R27/FIGURE 3.7b

This drawing has been prepared for the use of AECOM's client. It may not be used, modified, reproduced or relied upon by third parties, except as agreed by AECOM or as required by law. AECOM accepts no responsibility, and denies any liability whatsoever, for any part, that uses or relies on this drawing without AECOM's express written consent. All measurements must be obtained from the stated dimensions.