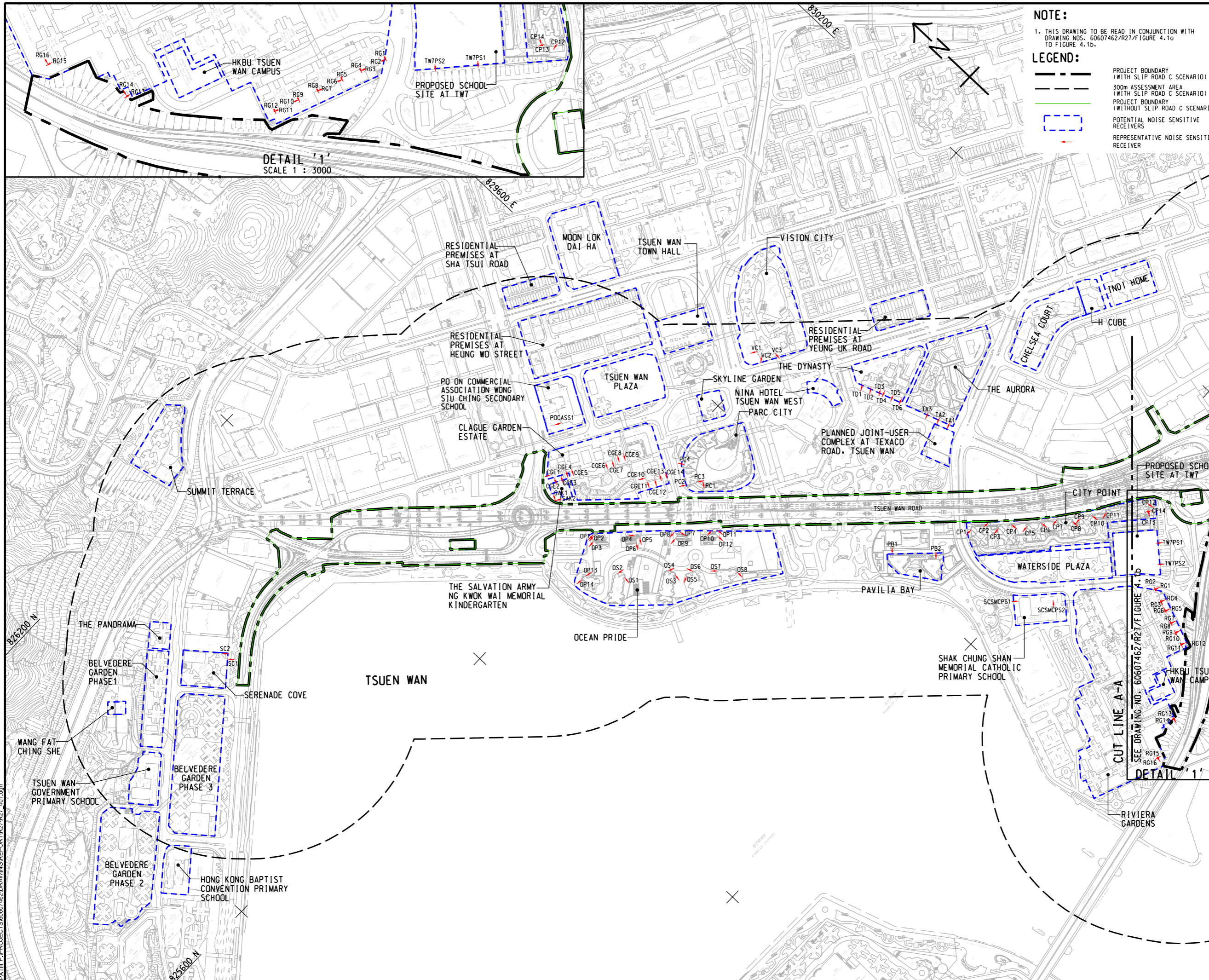


ISO A1 594mm x 841mm
 Approved:
 Checked:
 Designer:
 Project Management Initials:
 6/13/2023
 WANGDF
 PATH PROJECTS\60607462\DRAWING\REPORT\27\27-401.dgn



NOTE:
 1. THIS DRAWING TO BE READ IN CONJUNCTION WITH DRAWING NOS. 60607462/R27/FIGURE 4.1a TO FIGURE 4.1b.

LEGEND:

- PROJECT BOUNDARY (WITH SLIP ROAD C SCENARIO)
- 300m ASSESSMENT AREA (WITH SLIP ROAD C SCENARIO)
- PROJECT BOUNDARY (WITHOUT SLIP ROAD C SCENARIO)
- POTENTIAL NOISE SENSITIVE RECEIVERS
- REPRESENTATIVE NOISE SENSITIVE RECEIVER

AECOM

PROJECT
 WIDENING OF TSUEN WAN ROAD AND THE ASSOCIATED JUNCTION IMPROVEMENT WORKS

CLIENT
 路政署
 HIGHWAYS DEPARTMENT

CONSULTANT
 AECOM Asia Company Ltd.
 www.aecom.com

SUB-CONSULTANTS
 分列工程顧問公司

ISSUE/REVISION

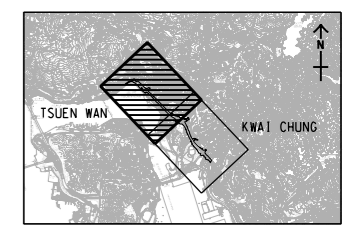
| NO. | DATE | DESCRIPTION | CHK. |
|-----|------|-------------|------|
| | | | |
| | | | |
| | | | |

STATUS
 10/12

SCALE
 1:6000

DIMENSION UNIT
 METRES

KEY PLAN
 A3 1:200000



PROJECT NO.
 60607462

AGREEMENT NO.
 CE61/2018(HY)

SHEET TITLE
 LOCATIONS OF REPRESENTATIVE NOISE SENSITIVE RECEIVERS

SHEET 1 OF 2

SHEET NUMBER
 60607462/R27/FIGURE 4.1a

This drawing has been prepared for the use of AECOM's client. It may not be used, modified, reproduced or relied upon by third parties, except as agreed by AECOM in writing. AECOM accepts no responsibility, liability, warranty, or any other legal obligation for any loss or damage, whether or not caused in whole or in part, that results from the use of this drawing without AECOM's express written consent. All measurements must be obtained from the stated dimensions.