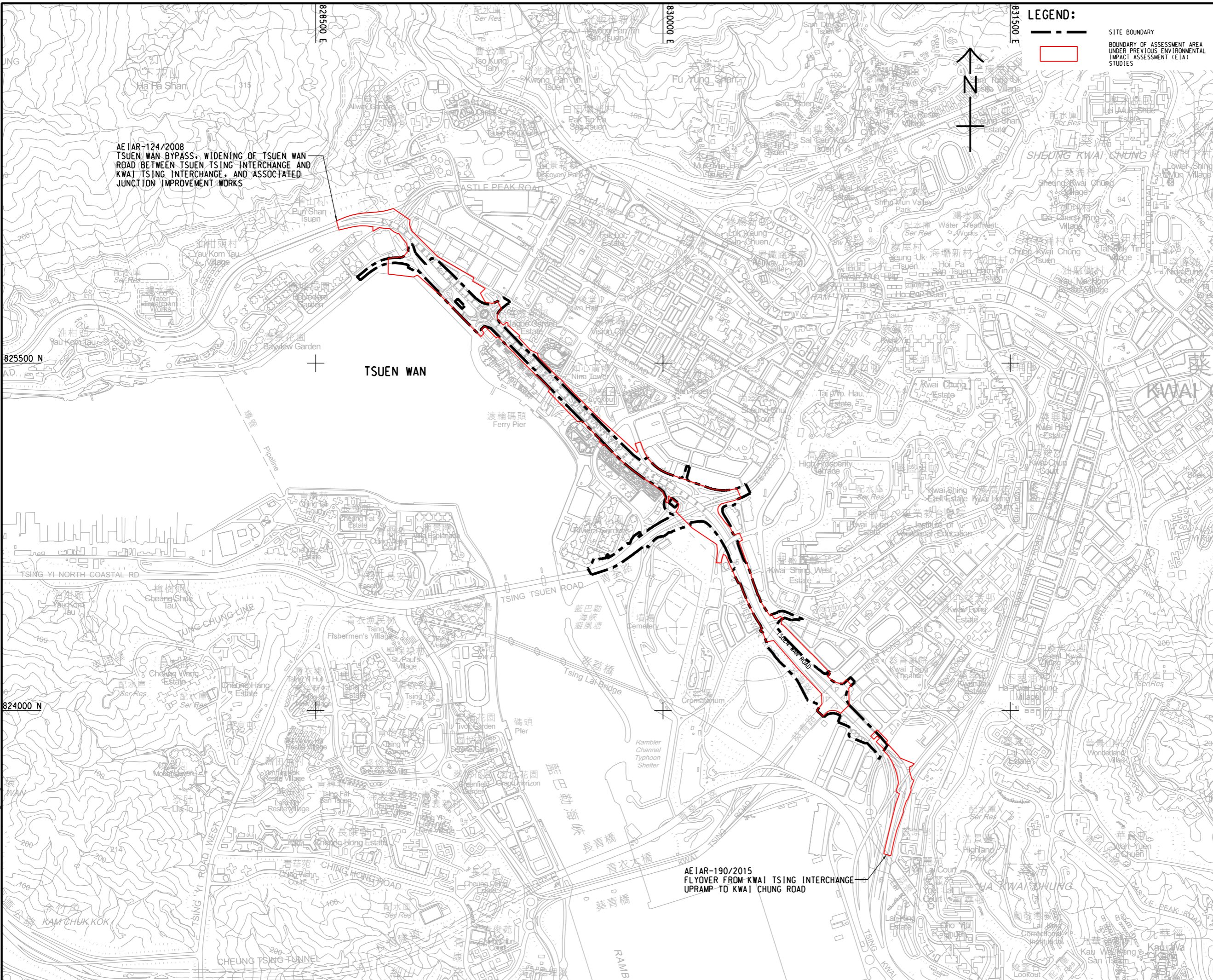


ISO A1 594mm x 841mm
 Approved:
 Checked:
 Designer:
 Project Management Initials:
 6/10/2023
 WANGDF
 60607462/DRAWINGREPORT/R27/R27_791.dgn



LEGEND:

- SITE BOUNDARY
- BOUNDARY OF ASSESSMENT AREA UNDER PREVIOUS ENVIRONMENTAL IMPACT ASSESSMENT (EIA) STUDIES



AEIAR-124/2008
 TSUEN WAN BYPASS, WIDENING OF TSUEN WAN ROAD BETWEEN TSUEN TSING INTERCHANGE AND KWAI TSING INTERCHANGE, AND ASSOCIATED JUNCTION IMPROVEMENT WORKS

TSUEN WAN

AEIAR-190/2015
 FLYOVER FROM KWAI TSING INTERCHANGE UPRAMP TO KWAI CHUNG ROAD



PROJECT
 WIDENING OF TSUEN WAN ROAD AND THE ASSOCIATED JUNCTION IMPROVEMENT WORKS

CLIENT
HIGHWAYS DEPARTMENT

CONSULTANT
 AECOM Asia Company Ltd.
 www.aecom.com

SUB-CONSULTANTS

ISSUE/REVISION			
IR	DATE	DESCRIPTION	CHK.

STATUS

SCALE
 A3 1: 15000

DIMENSION UNIT
 METRES

KEY PLAN

PROJECT NO.
 60607462

AGREEMENT NO.
 CE61/2018(HY)

SHEET TITLE

SITE LOCATION PLAN AND LAND CONTAMINATION ASSESSMENT AREA UNDER PREVIOUS EIA STUDIES

SHEET NUMBER
 60607462/R27/FIGURE 7.1

This drawing has been prepared for the use of AECOM's client. It may not be used, modified, reproduced or relied upon by third parties, except as required by law. AECOM accepts no responsibility, and disclaims any liability, whatsoever, for any part, that is less or more than what is shown on this drawing without AECOM's express written consent. All measurements must be obtained from the stated dimensions.