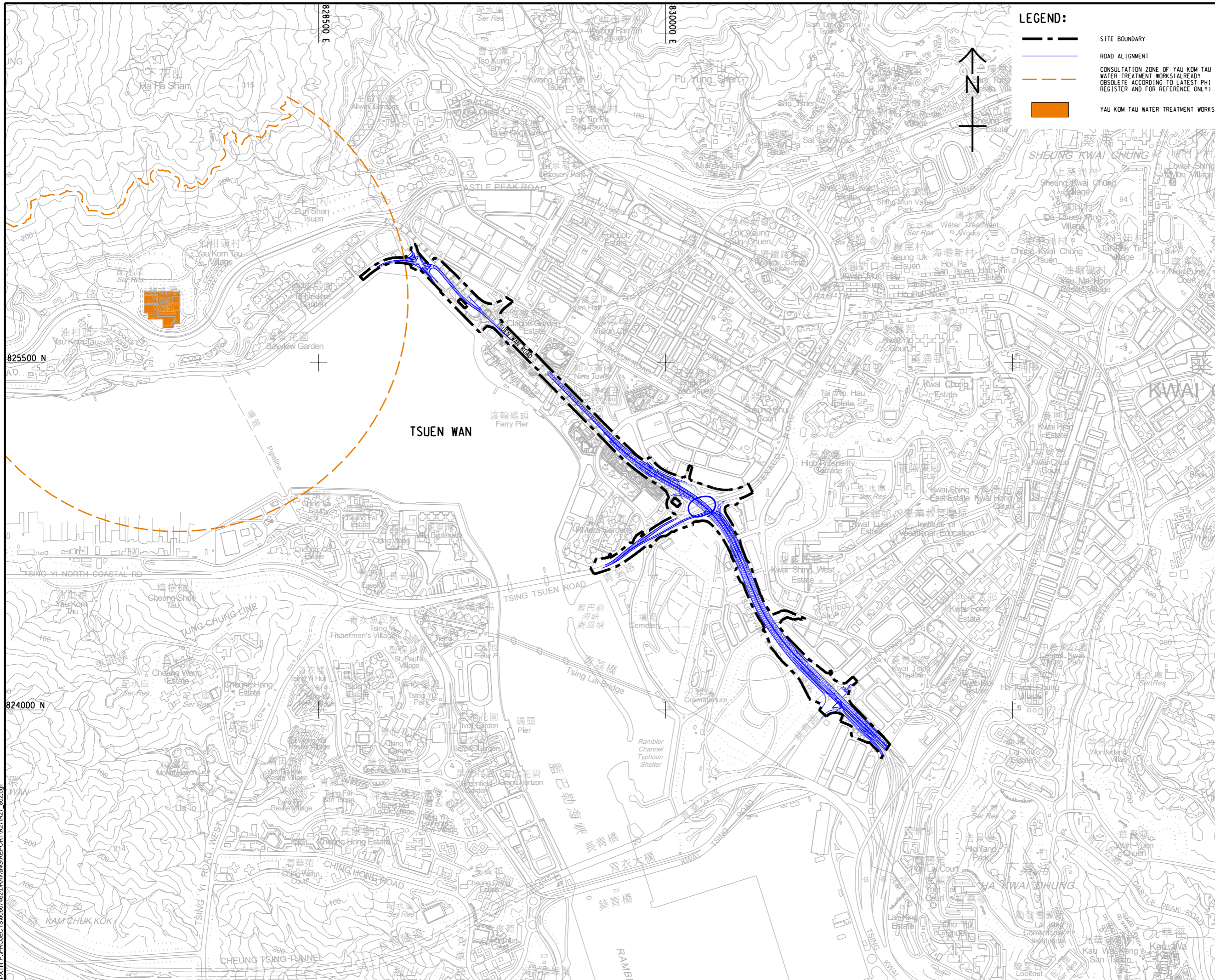


ISO A1 594mm x 841mm
 Approved:
 Checked:
 Designer:
 Project Management Initials:

Plot File by: WANGDF
 PATH: P:\PROJECTS\60607462\DRAWING\REPORT\R27\R27_802.dgn
 7/7/2023



LEGEND:

- SITE BOUNDARY
- ROAD ALIGNMENT
- CONSULTATION ZONE OF YAU KOM TAU WATER TREATMENT WORKS (ALREADY OBSOLETE ACCORDING TO LATEST PHI REGISTER AND FOR REFERENCE ONLY)
- YAU KOM TAU WATER TREATMENT WORKS



PROJECT
 WIDENING OF TSUEN WAN ROAD
 AND THE ASSOCIATED JUNCTION
 IMPROVEMENT WORKS

CLIENT
 路政署
HIGHWAYS DEPARTMENT

CONSULTANT
 AECOM Asia Company Ltd.
 www.aecom.com

SUB-CONSULTANTS
 分判工程顧問公司

ISSUE/REVISION

IR	DATE	DESCRIPTION	CHK.

STATUS
 10/2

SCALE
 A3 1: 15000

DIMENSION UNIT
 METRES

KEY PLAN

PROJECT NO.
 60607462

AGREEMENT NO.
 CE61/2018(HY)

SHEET TITLE
 CONSULTATION ZONE OF
 YAU KOM TAU WATER
 TREATMENT WORKS

SHEET NUMBER
 60607462/R27/FIGURE 9.1

This drawing has been prepared for the use of AECOM's client. It may not be used, modified, reproduced or relied upon by third parties, except as required by law. AECOM accepts no responsibility, and disclaims any liability, whatsoever, for any part, that less or more than this drawing without AECOM's express written consent. All measurements must be obtained from the stated dimensions.