

Drawing A Proposed dive target locations

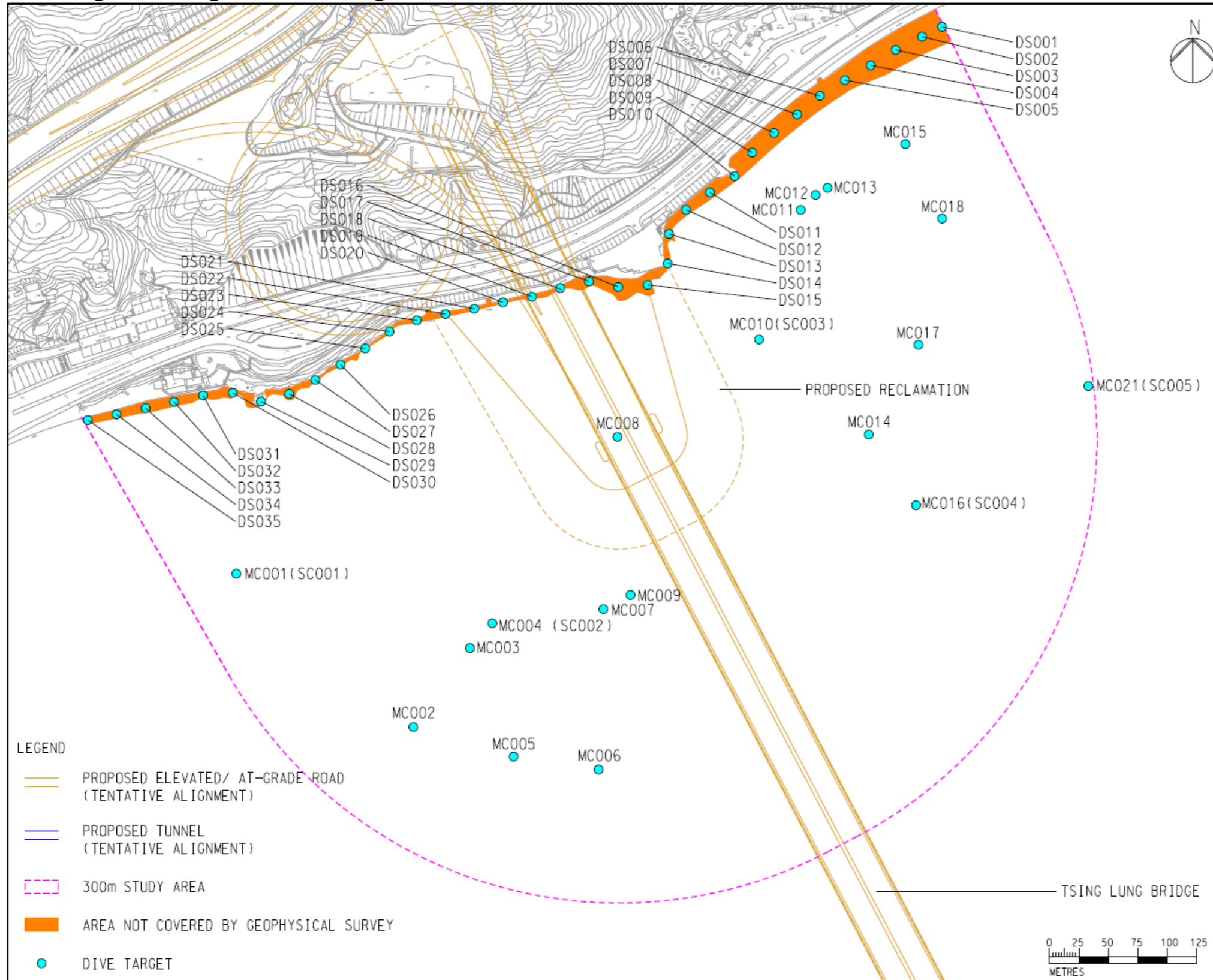


Table A Proposed dive targets

Contact number	Latitude Longitude	Easting Northing	Water depth (m-PD)	Dimensions (m) or gradient (nT/m)	EGS description	SDA description	Archaeological potential
SC001	22° 21.356' N 114° 2.157' E	821752.3E 824095.9N	20.9	6x2.5x2.4	Rectangle block	Unknown object	Medium
SC002	22° 21.335' N 114° 2.282' E	821967.6E 824057.5N	31.5	4.2x1.3x0.7	Rectangle block	Unknown object	Medium
SC003	22° 21.463' N 114° 2.416' E	822197.2E 824294.1N	11.5	6x2.6x2.5	Rectangle block	Unknown object	Medium
SC004	22° 21.390' N 114° 2.493' E	822329.4E 824157.9N	27.8	2.2x1.5x0.5	Rectangle block	Unknown object	Medium
SC005	22° 21.441' N 114° 2.578' E	822475.1E 824252.9N	24.8	2.7x2.5x0.6	Debris/tyre	Unknown object	Medium
MC001	22° 21.356' N 114° 2.158' E	821754.2E 824095.7N	21.2	233nT/m	Rectangle block	Unknown object	Medium (associated with SC001)
MC002	22° 21.285' N 114° 2.246' E	821904.2E 823965.7N	38.7	41nT/m	Unknown	Unknown object	Low
MC003	22° 21.322' N 114° 2.273' E	821952.2E 824032.7N	34.8	18nT/m	Unknown	Unknown object	Low
MC004	22° 21.333' N 114° 2.284' E	821971.2E 824053.7N	32.5	116nT/m	Rectangle block	Unknown object	Medium (associated with SC002)
MC005	22° 21.272' N 114° 2.295' E	821989.2E 823940.7N	39.3	11nT/m	Unknown	Unknown object	Low
MC006	22° 21.266' N 114° 2.337' E	822061.2E 823929.7N	39	12nT/m	Unknown	Unknown object	Low
MC007	22° 21.340' N 114° 2.339' E	822065.2E 824065.7N	30.6	31nT/m	Unknown	Unknown object	Low
MC008	22° 21.419' N 114° 2.346' E	822077.2E 824211.7N	19.6	191nT/m	Unknown	Unknown object	Low
MC009	22° 21.346' N 114° 2.353' E	822088.2E 824077.7N	29.1	12nT/m	Unknown	Unknown object	Low

Contact number	Latitude Longitude	Easting Northing	Water depth (m-PD)	Dimensions (m) or gradient (nT/m)	EGS description	SDA description	Archaeological potential
MC010	22° 21.463' N 114° 2.415' E	822196.2E 824293.7N	12.7	314nT/m	Rectangle block	Unknown object	Medium (associated with SC003)
MC011	22° 21.523' N 114° 2.436' E	822232.5E 824404.0N	4.7	100nT/m	Unknown	Unknown object	Low
MC012	22° 21.530' N 114° 2.444' E	822245.2E 824416.7N	4.2	15nT/m	Unknown	Unknown object	Low
MC013	22° 21.533' N 114° 2.450' E	822255.2E 824422.7N	3.9	10nT/m	Unknown	Unknown object	Low
MC014	22° 21.420' N 114° 2.470' E	822290.2E 824213.7N	25.7	28nT/m	Unknown	Unknown object	Low
MC015	22° 21.553' N 114° 2.488' E	822321.2E 824459.7N	2.7	17nT/m	Unknown	Unknown object	Low
MC016	22° 21.387' N 114° 2.494' E	822330.2E 824153.7N	27.5	25nT/m	Rectangle block	Unknown object	Medium (associated with SC004)
MC017	22° 21.461' N 114° 2.495' E	822332.2E 824289.7N	20.4	12nT/m	Unknown	Unknown object	Low
MC018	22° 21.519' N 114° 2.506' E	822352.2E 824396.7N	8.9	11nT/m	Unknown	Unknown object	Low
MC021	22° 21.442' N 114° 2.579' E	822476.2E 824254.7N	24.9	77nT/m	Debris/tyre	Unknown object	Medium (associated with SC005)
DS001	22° 21.607' N 114° 2.506' E	822352.2E 824559.2N	N/M	N/A	N/A	N/A	Unknown
DS002	22° 21.603' N 114° 2.496' E	822335.3E 824551.0N	N/M	N/A	N/A	N/A	Unknown
DS003	22° 21.597' N 114° 2.483' E	822313.0E 824539.7N	N/M	N/A	N/A	N/A	Unknown
DS004	22° 21.589' N 114° 2.471' E	822291.8E 824526.5N	N/M	N/A	N/A	N/A	Unknown
DS005	22° 21.583' N	822270.0E	N/M	N/A	N/A	N/A	Unknown

Contact number	Latitude Longitude	Easting Northing	Water depth (m-PD)	Dimensions (m) or gradient (nT/m)	EGS description	SDA description	Archaeological potential
	114° 2.458' E	824514.0N					
DS006	22° 21.575' N 114° 2.446' E	822248.8E 824500.7N	N/M	N/A	N/A	N/A	Unknown
DS007	22° 21.567' N 114° 2.435' E	822229.4E 824484.8N	N/M	N/A	N/A	N/A	Unknown
DS008	22° 21.558' N 114° 2.423' E	822210.0E 824469.2N	N/M	N/A	N/A	N/A	Unknown
DS009	22° 21.549' N 114° 2.412' E	822191.3E 824452.6N	N/M	N/A	N/A	N/A	Unknown
DS010	22° 21.538' N 114° 2.404' E	822176.4E 824432.7N	N/M	N/A	N/A	N/A	Unknown
DS011	22° 21.531' N 114° 2.392' E	822155.6E 824418.8N	N/M	N/A	N/A	N/A	Unknown
DS012	22° 21.523' N 114° 2.38' E	822135.3E 824404.1N	N/M	N/A	N/A	N/A	Unknown
DS013	22° 21.512' N 114° 2.371' E	822120.8E 824383.7N	N/M	N/A	N/A	N/A	Unknown
DS014	22° 21.498' N 114° 2.371' E	822119.7E 824358.7N	N/M	N/A	N/A	N/A	Unknown
DS015	22° 21.488' N 114° 2.361' E	822102.7E 824340.5N	N/M	N/A	N/A	N/A	Unknown
DS016	22° 21.488' N 114° 2.346' E	822077.7E 824338.7N	N/M	N/A	N/A	N/A	Unknown
DS017	22° 21.49' N 114° 2.332' E	822053.1E 824343.5N	N/M	N/A	N/A	N/A	Unknown
DS018	22° 21.487' N 114° 2.318' E	822028.7E 824337.7N	N/M	N/A	N/A	N/A	Unknown
DS019	22° 21.483' N 114° 2.304' E	822004.8E 824330.4N	N/M	N/A	N/A	N/A	Unknown
DS020	22° 21.48' N 114° 2.29' E	821980.2E 824325.6N	N/M	N/A	N/A	N/A	Unknown
DS021	22° 21.477' N	821955.9E	N/M	N/A	N/A	N/A	Unknown

Contact number	Latitude Longitude	Easting Northing	Water depth (m-PD)	Dimensions (m) or gradient (nT/m)	EGS description	SDA description	Archaeological potential
	114° 2.275' E	824320.2N					
DS022	22° 21.475' N 114° 2.261' E	821931.4E 824315.7N	N/M	N/A	N/A	N/A	Unknown
DS023	22° 21.472' N 114° 2.247' E	821907.1E 824310.4N	N/M	N/A	N/A	N/A	Unknown
DS024	22° 21.467' N 114° 2.234' E	821884.0E 824300.8N	N/M	N/A	N/A	N/A	Unknown
DS025	22° 21.459' N 114° 2.222' E	821863.4E 824286.5N	N/M	N/A	N/A	N/A	Unknown
DS026	22° 21.452' N 114° 2.209' E	821842.6E 824272.8N	N/M	N/A	N/A	N/A	Unknown
DS027	22° 21.445' N 114° 2.197' E	821821.2E 824259.9N	N/M	N/A	N/A	N/A	Unknown
DS028	22° 21.438' N 114° 2.184' E	821799.0E 824248.1N	N/M	N/A	N/A	N/A	Unknown
DS029	22° 21.435' N 114° 2.17' E	821775.1E 824241.6N	N/M	N/A	N/A	N/A	Unknown
DS030	22° 21.439' N 114° 2.156' E	821751.2E 824249.1N	N/M	N/A	N/A	N/A	Unknown
DS031	22° 21.438' N 114° 2.142' E	821726.1E 824246.8N	N/M	N/A	N/A	N/A	Unknown
DS032	22° 21.435' N 114° 2.127' E	821701.5E 824241.3N	N/M	N/A	N/A	N/A	Unknown
DS033	22° 21.432' N 114° 2.113' E	821677.3E 824236.0N	N/M	N/A	N/A	N/A	Unknown
DS034	22° 21.429' N 114° 2.099' E	821652.7E 824230.8N	N/M	N/A	N/A	N/A	Unknown
DS035	22° 21.426' N 114° 2.085' E	821628.3E 824225.9N	N/M	N/A	N/A	N/A	Unknown

Notes:

N/M: Not Measured; N/A: Not Applicable