

**Legend**

- Assessment Area
- Transport Routes



## **Annex 1**

Type of Population

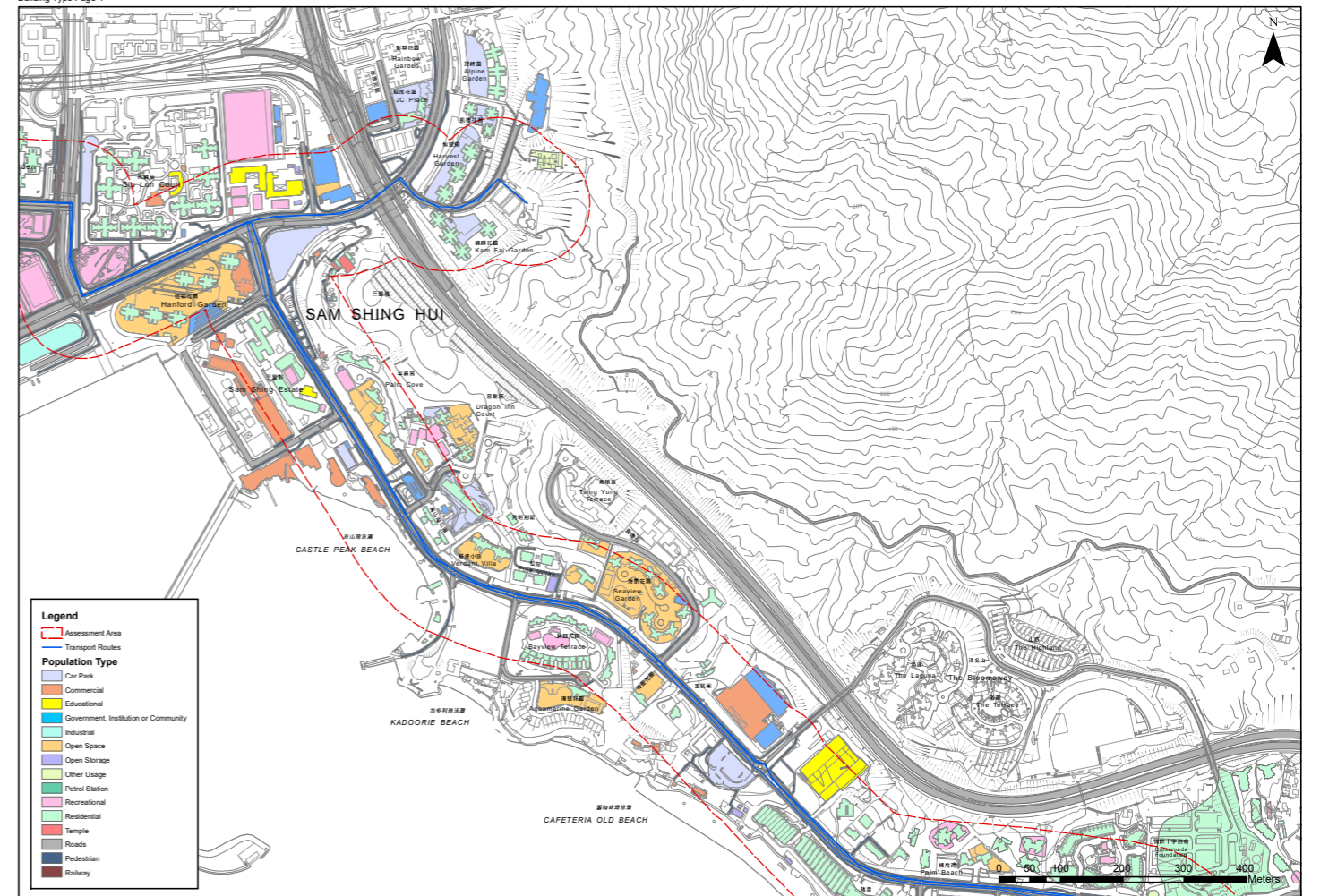
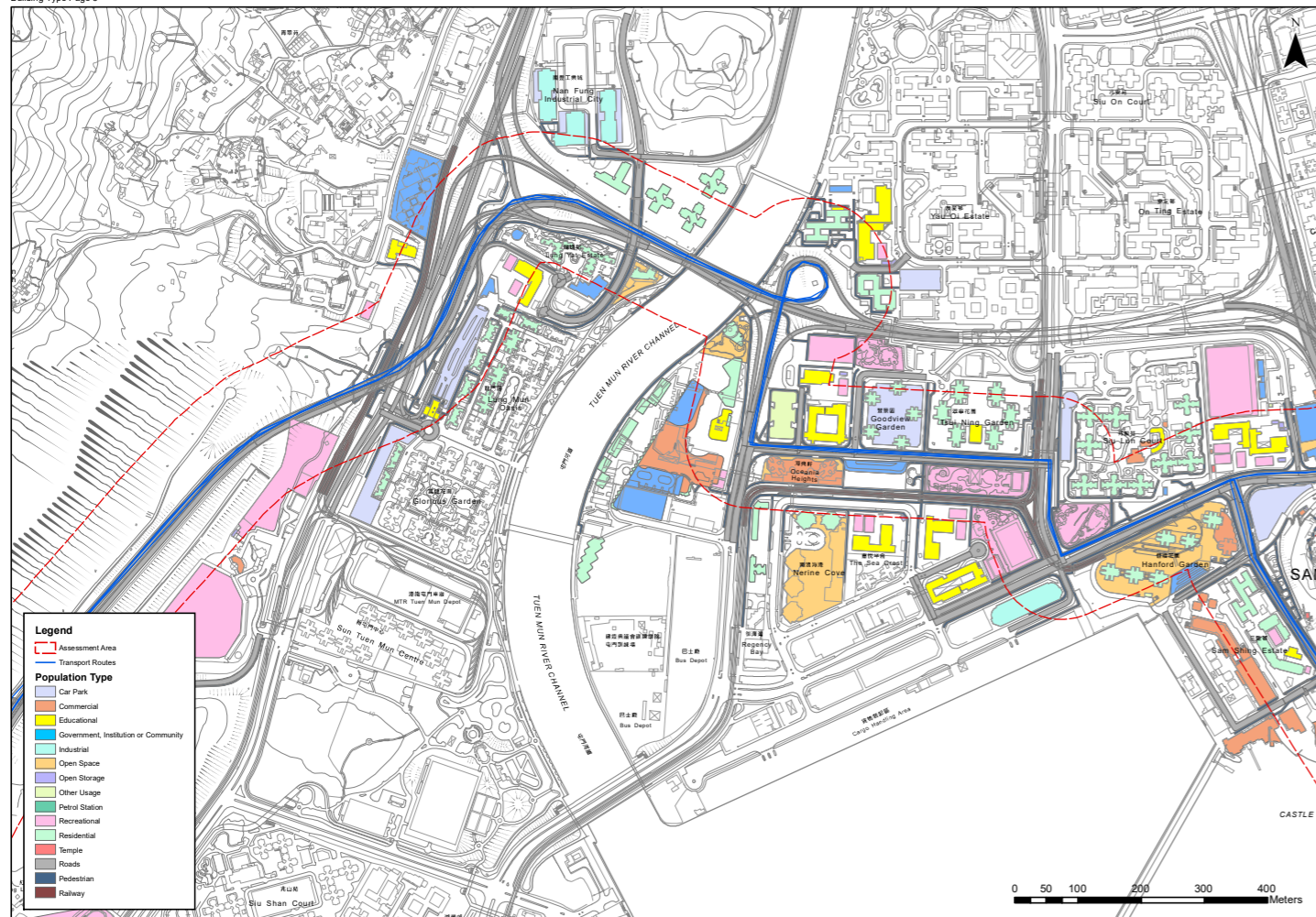
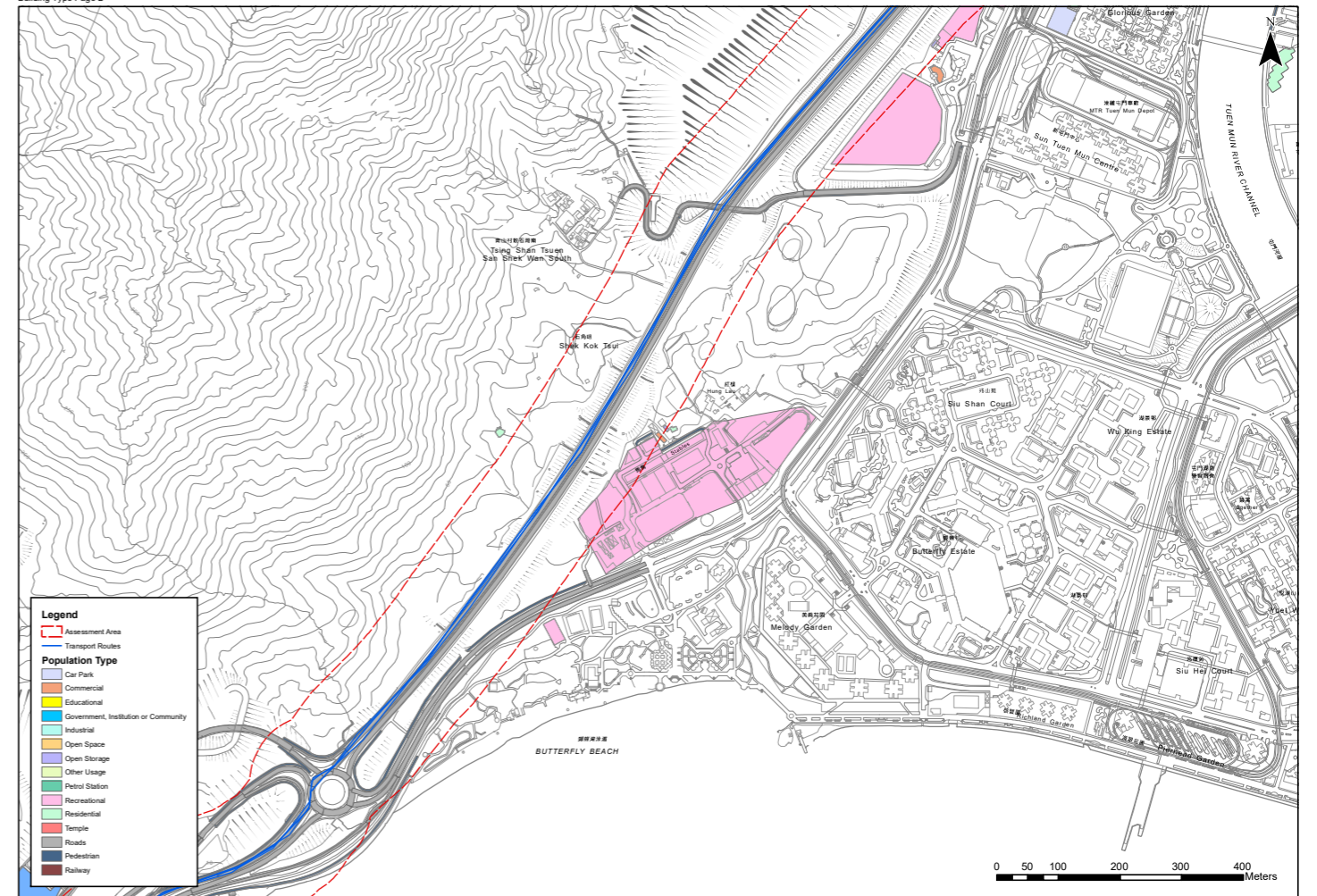
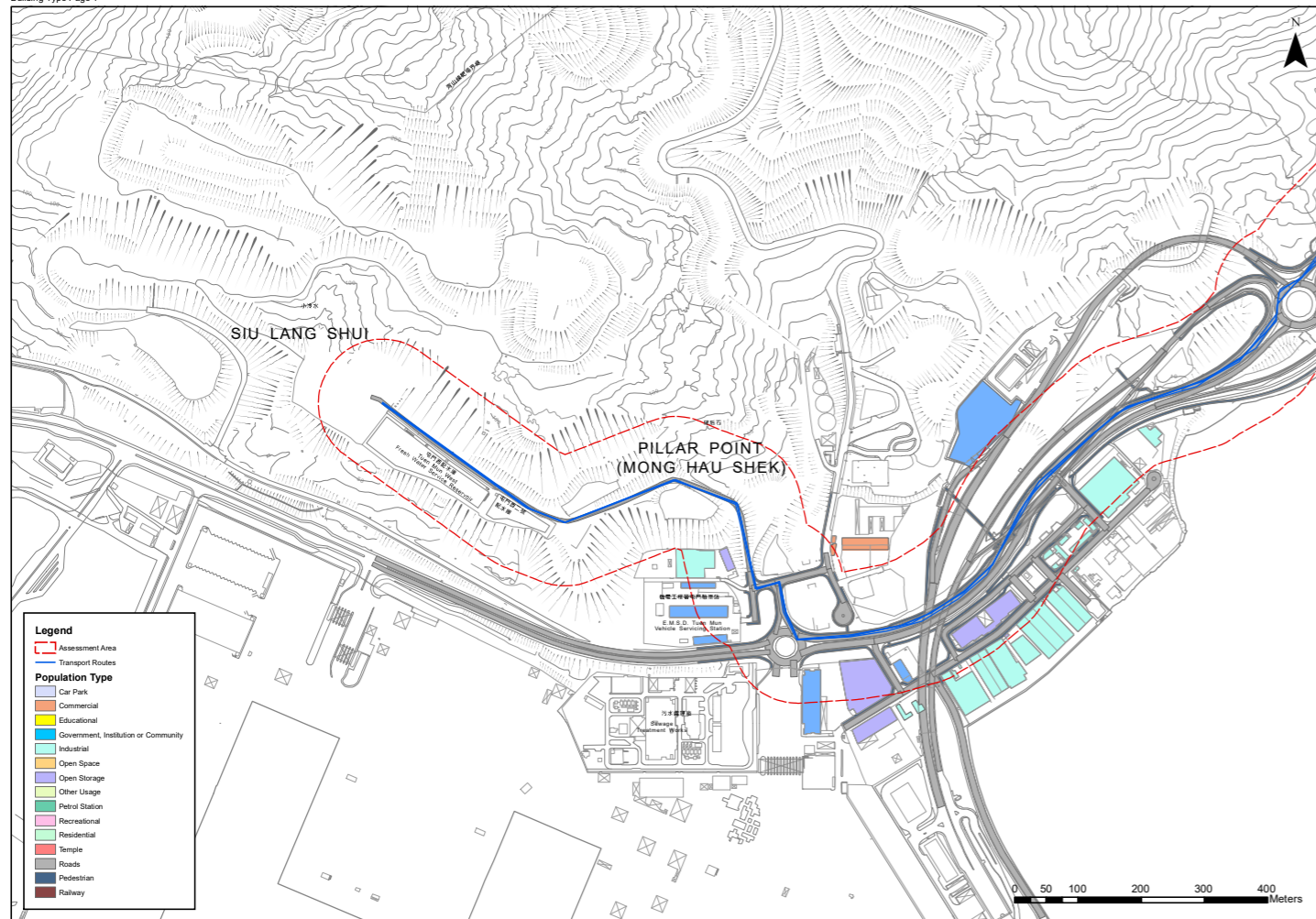
**Table 1.** Population Assumption

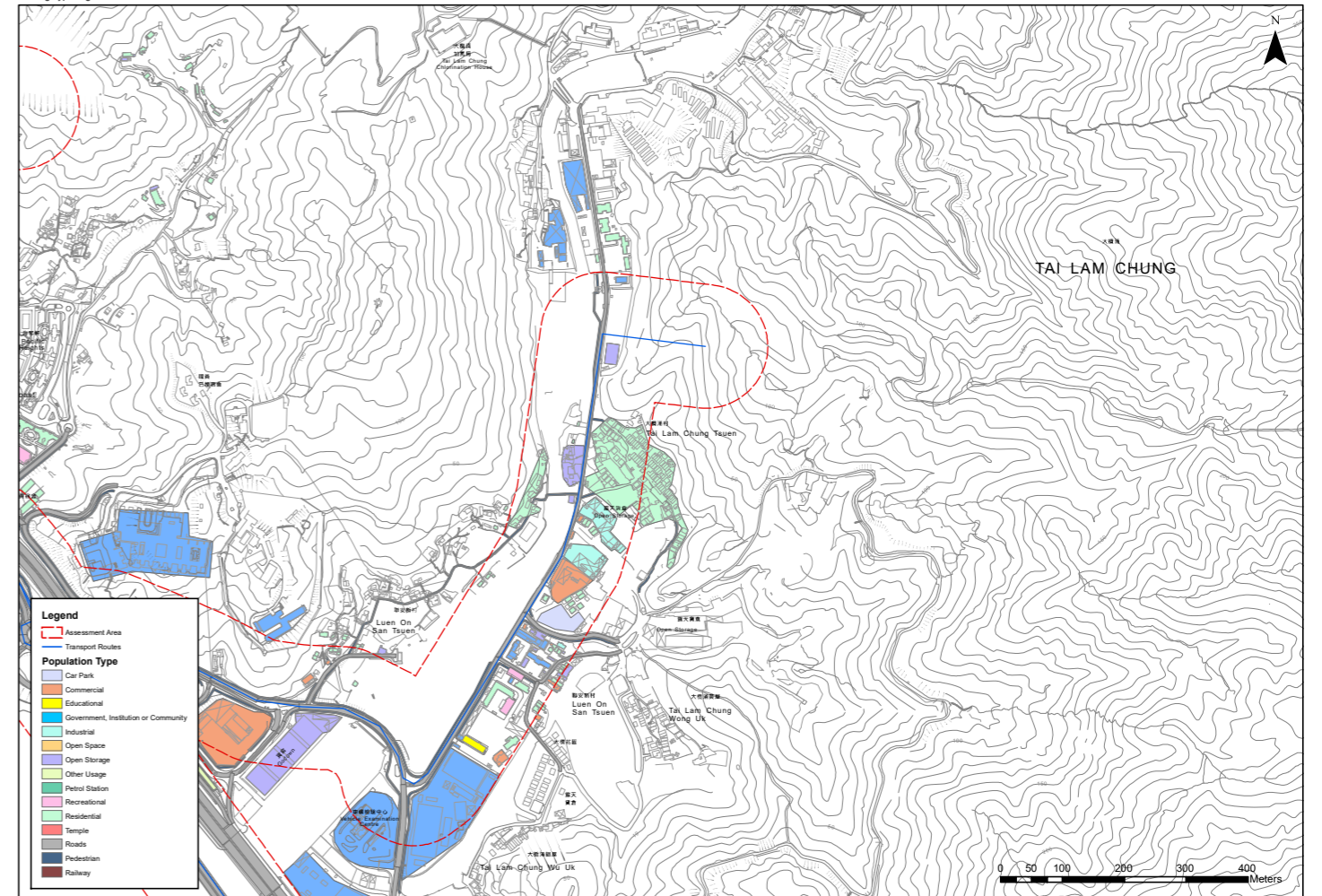
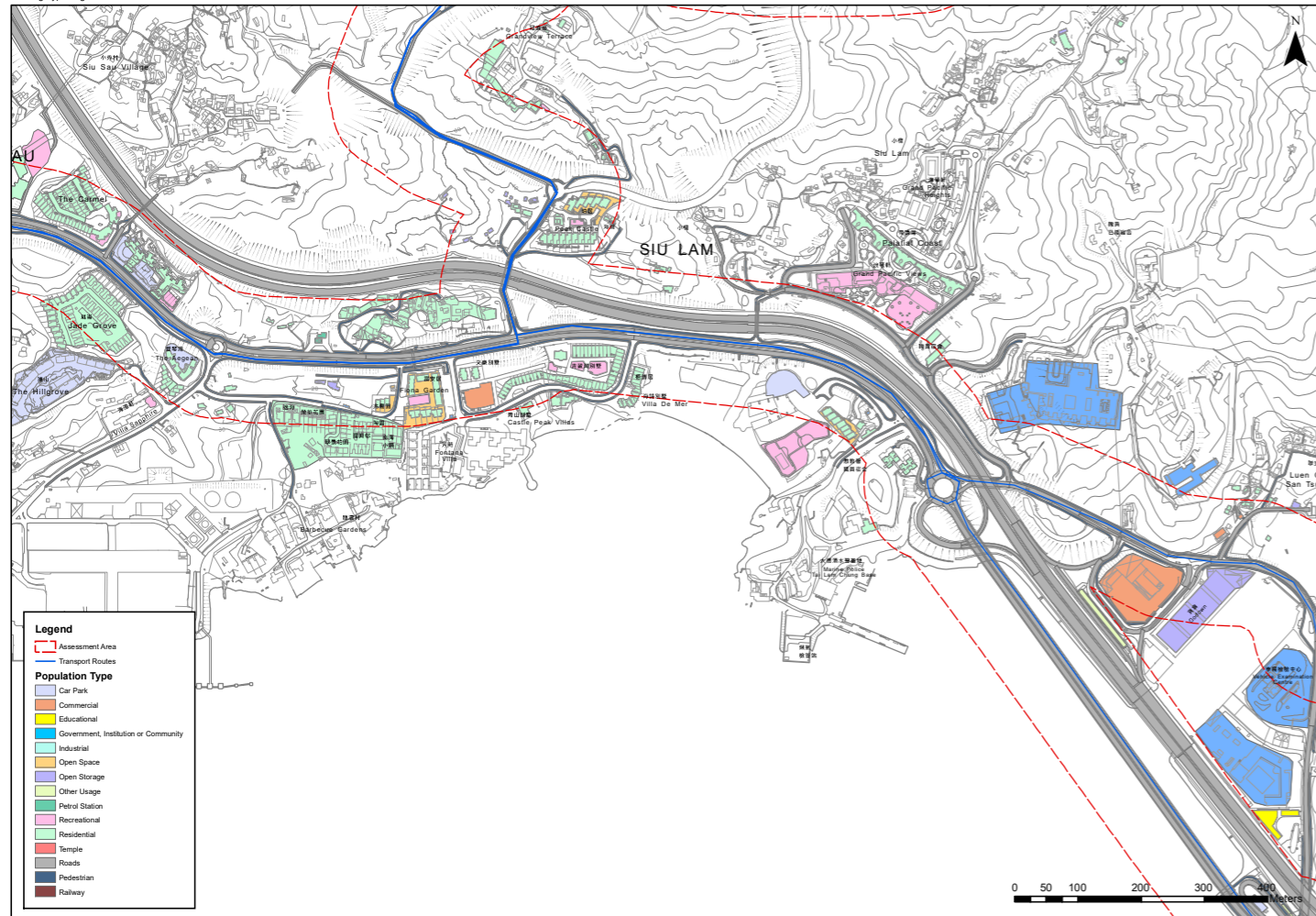
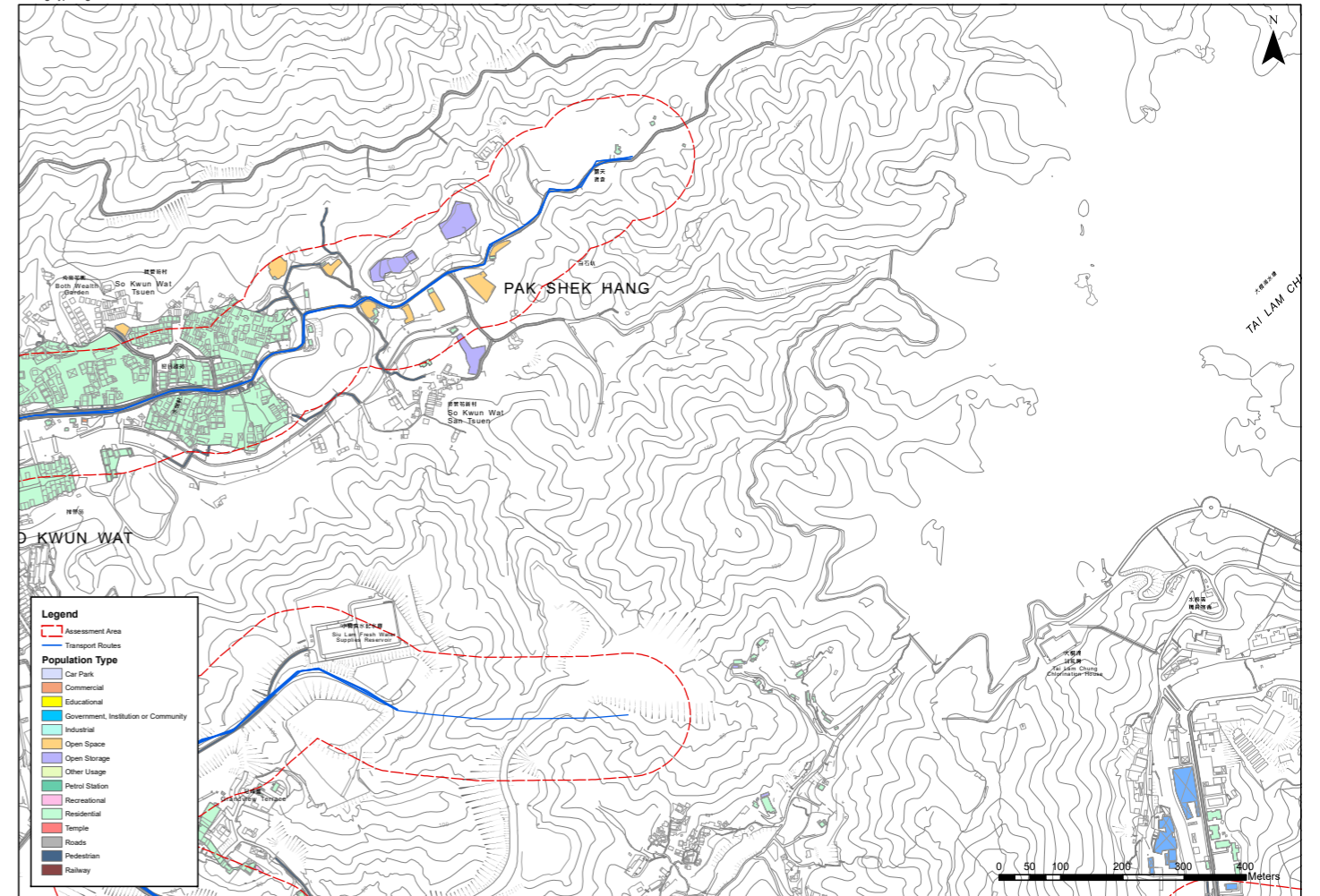
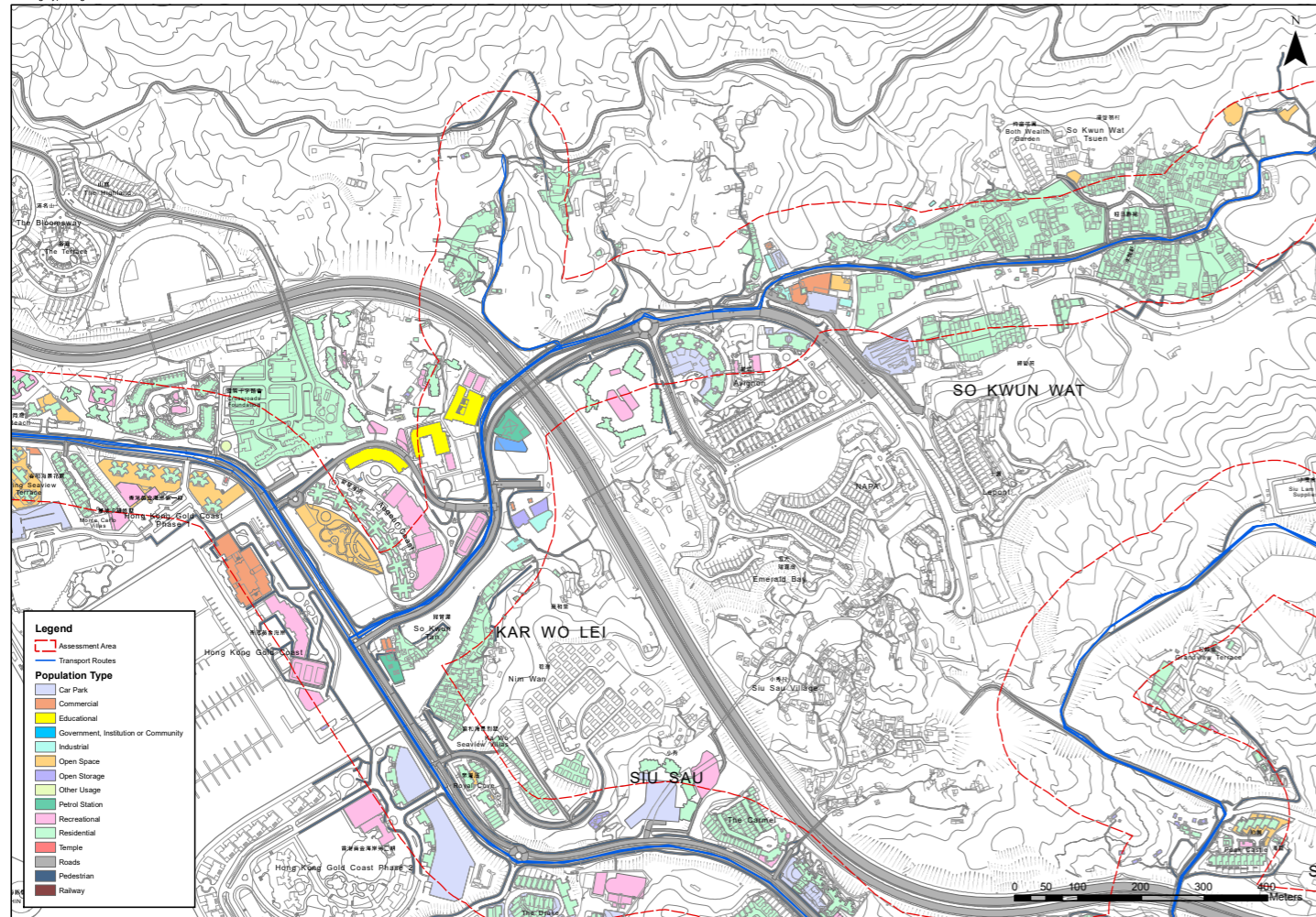
Population Type	Reference
Residential	<ul style="list-style-type: none"> <li>• Year 2021 Census was adopted, a population of 2.6 per unit in Tuen Mun District Council Constituency Area is assumed according to the census information.</li> <li>• For most of the high-rise buildings, the total number of units are made reference to Centamap website.</li> <li>• For population in village house, it is assumed that each floor has one household. The population of each village house is determined by multiplying the number of floors with the average domestic household size.</li> <li>• The information for Tuen Mun proposed developments is listed as below:               <ul style="list-style-type: none"> <li>- RNTPC Paper No.9/17 Item A2 – Area abutting Wong Chu Road and adjoining Yip Wong Road (Kau Hui Site)</li> <li>- Application No. Y/TM/29 of Broad Development Parameters of the Applied Use/Development</li> <li>- Tuen Mun Outline Zoning Plan (OZP) No. S/TM/35A Item A1 – Rezoning of a site at Hoi Wong Road in Tuen Mun Area 16 from “G/IC” and “O” to “OU” annotated “Commercial/Residential Development with Public Transport Interchange”</li> </ul> </li> </ul>
Educational	<ul style="list-style-type: none"> <li>• School within the CZ are listed as below:               <ul style="list-style-type: none"> <li>- The Church of Christ in China Hoh Fuk Tong Primary School;</li> <li>- Chung Sing Benevolent Society Mrs. Aw Boon Haw Secondary School;</li> <li>- Yan Chai Hospital Ho Sik Nam Primary School;</li> <li>- Hong Chi Morninghill School;</li> <li>- Semple Memorial Secondary School;</li> <li>- W.F.B. Avalokitesvara Nursery School;</li> <li>- Shun Tak Fraternal Association Tam Pak Yu College;</li> <li>- Shine Skills Centre (Tuen Mun);</li> <li>- Christian Alliance S.C. Chan Memorial College;</li> <li>- Ching Chung Hau Po Woon Secondary School;</li> <li>- S.T.F.A. Lee Kam Primary School;</li> <li>- PLK Women's Welfare Club Western District Fung Lee Pui Yiu Primary School;</li> <li>- Hong Kong Christian Service Pui Oi School;</li> <li>- N.L.S.I. Peace Evangelical Secondary School;</li> <li>- The Salvation Army Sam Shing Nursery School;</li> <li>- Yau Oi Kindergarten-cum-Nursery;</li> <li>- Agnes English Kindergarten;</li> <li>- Chu Hai College of Higher Education;</li> <li>- Creative Kindergarten (Aegean Coast);</li> <li>- Proposed Kindergarten from Tuen Mun Outline Zoning Plan (OZP) No. S/TM/35A Item A1; and etc..</li> </ul> </li> <li>• The schools’ population is estimated according to the information from school database website (<a href="https://www.schooland.hk/">https://www.schooland.hk/</a>), and school official websites.</li> <li>• Student per class is 25 for both primary school and secondary school. Those values are according to the numbers of operating classes and student enrolment from the Student Enrolment Statistics, 2021/22 published by the Education Bureau.</li> </ul>
Road traffic population	<ul style="list-style-type: none"> <li>• Road traffic at Year 2033 is based on the information provided by Traffic Consultant.</li> <li>• The estimated population is determined by the sum of vehicle type composition multiply by the persons per vehicle (occupancy).</li> </ul>

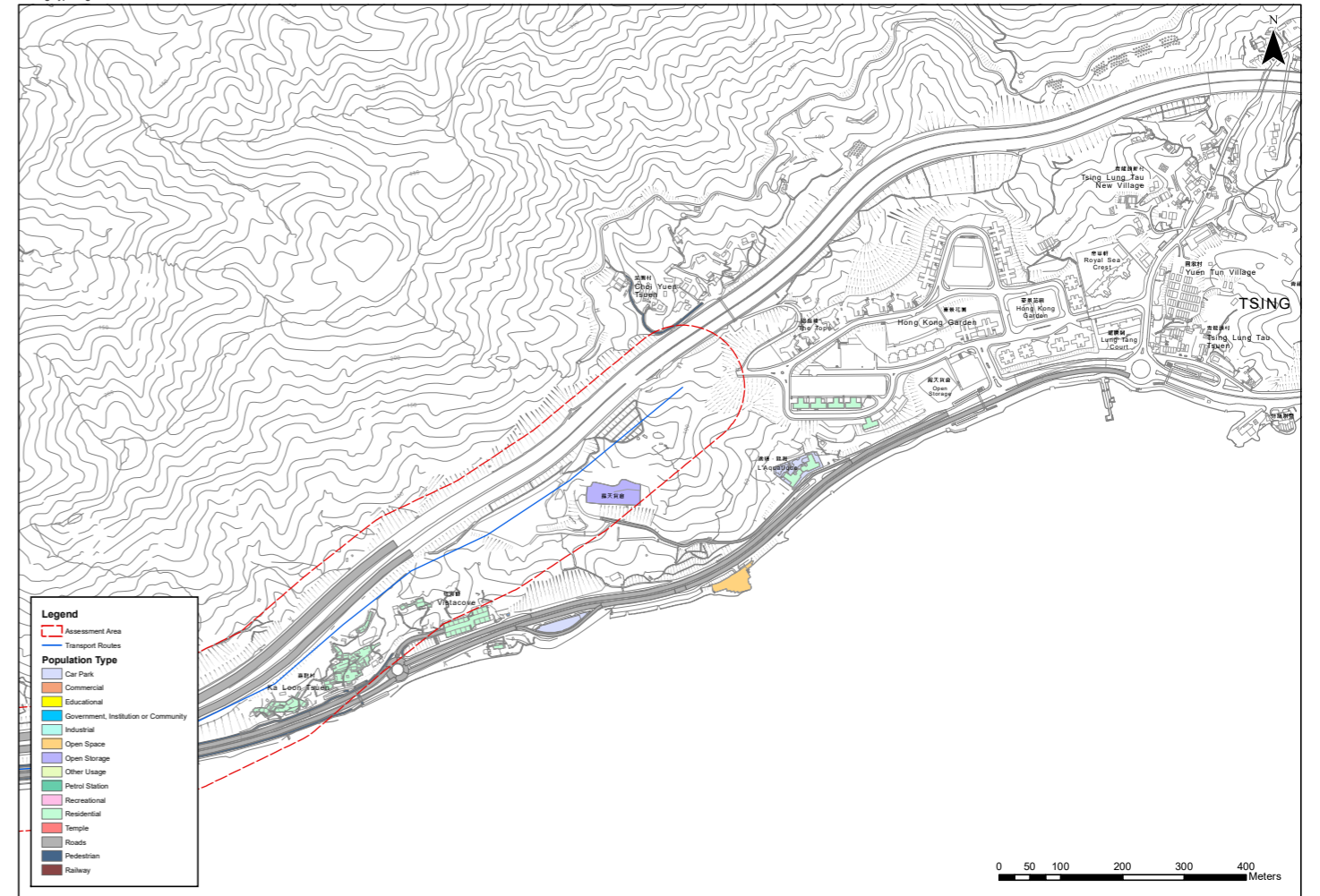
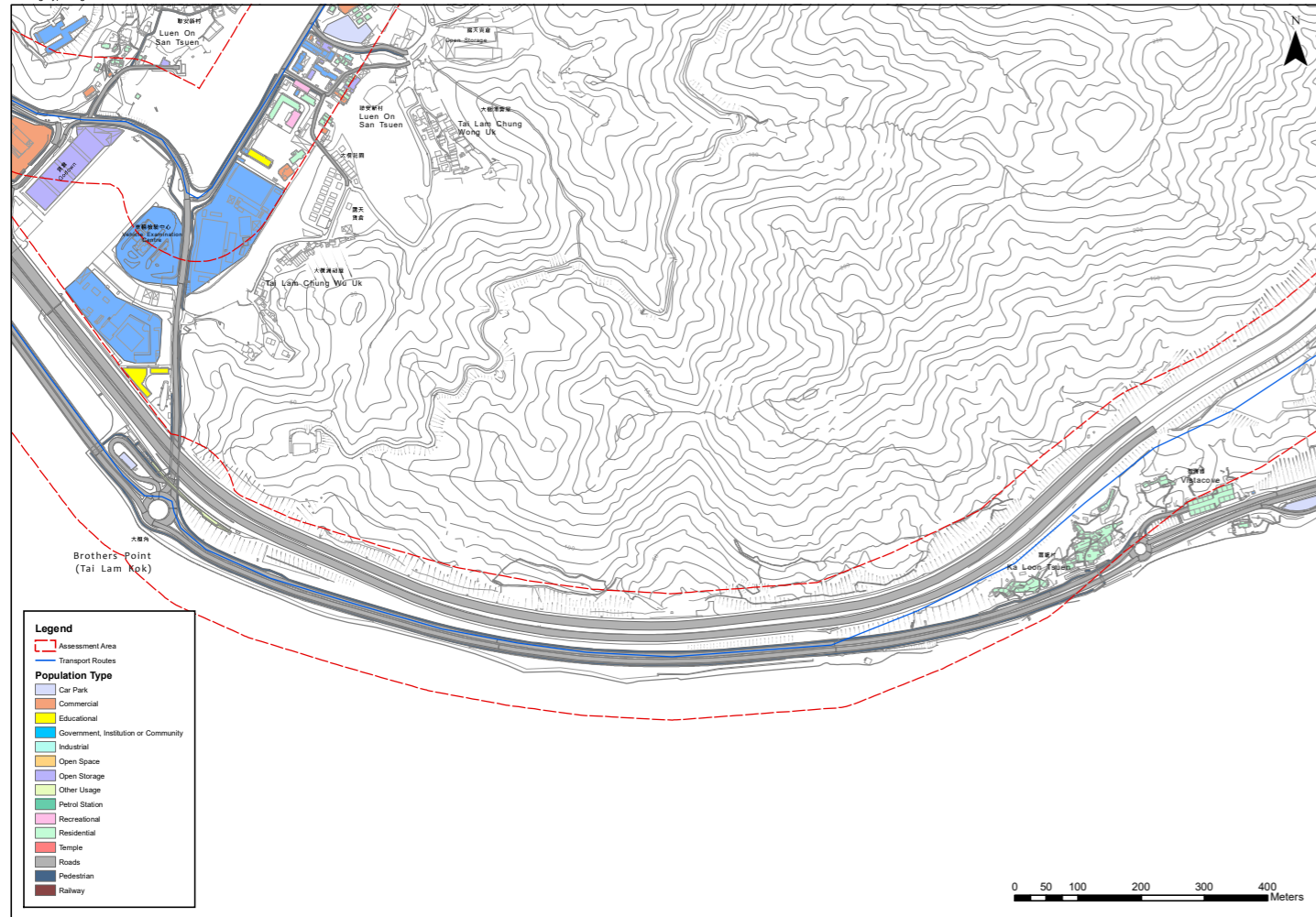
Population Type	Reference
Railway traffic population	<ul style="list-style-type: none"> <li>According to LC Paper No. CB(4)854/15-16(07), the design capacity of a Light Rail Vehicle (LRV) is around 240 persons. Most of the LRVs travel within the assessment area are assumed to be coupled-set except for the route that is all served by single-set LRVs.</li> <li>Railway population is calculated based on their average train frequency according to their own schedule and the assumption of train frequency (per train per direction) for different routes are listed below:               <ul style="list-style-type: none"> <li>- Route 505, 507 and 610: 12 minutes;</li> <li>- Route 615: 19 minutes;</li> <li>- Route 615P: 13 minutes;</li> <li>- Route 614: 17 minutes;</li> <li>- Route 614P: 14 minutes.</li> </ul> </li> </ul>
Temple	<ul style="list-style-type: none"> <li>Population estimation based on the size of the temple:               <ul style="list-style-type: none"> <li>Large Size: 100 people;</li> <li>Medium Size: 50 people;</li> <li>Small Size: 10 people.</li> </ul> </li> </ul>
Recreational / Open Space	<ul style="list-style-type: none"> <li>Population estimation based on the size and the purpose of the entertainment ground:               <ul style="list-style-type: none"> <li>Large Size: 200 people;</li> <li>Medium Size: 100 people;</li> <li>Small Size: 50 people;</li> <li>Very Small Size: 10 people.</li> </ul> </li> </ul>
Office (Administration) / Commercial	<ul style="list-style-type: none"> <li>Population is determined by assuming 9 m<sup>2</sup> GFA/ person according to Code of Practice for Fire Safety in Buildings 2011 (version Oct 2015) (Class 4a, Offices).</li> </ul>
Industrial	<ul style="list-style-type: none"> <li>Population is determined by assuming 300 workers/ha for Rural-Based Industrial Use (RI) according to HKPSG (Ch5, Table 2) .</li> </ul>
Open Storage	<ul style="list-style-type: none"> <li>Population is determined by assuming 700 m<sup>2</sup>/worker for Warehouse according to HKPSG (Ch5, Table 2).</li> </ul>
Car Park	<ul style="list-style-type: none"> <li>It is assumed that each parking space has 0.2 people. If the number of parking space is not provided, the number of parking space is determined by dividing the area of the car park with the typical parking area of private cars which its length and width are 5m and 2.5m respectively.</li> </ul>
Government, Institution or Community	<ul style="list-style-type: none"> <li>Population estimation based on the purpose of the station:               <ul style="list-style-type: none"> <li>Central Refuse Station: 5 people</li> <li>Refuse Collection Point: 2 people</li> <li>Sewage Treatment works / Toilet / Electric sub-station / pumping station: No people</li> </ul> </li> <li>The population apart from government station is estimated according to the information from their official websites.</li> </ul>
Petrol Station	<ul style="list-style-type: none"> <li>It is assumed that there are 2 staff stationed in the convenience shop, 4 stationed in fuel area for filling, and 4 vehicles each with 3 people, parked into the Petrol Station for petrol filling.</li> </ul>
Fire Station	<ul style="list-style-type: none"> <li>The Fire Services Department has an establishment of about 10,730 uniformed personnel and 760 civilian members. It is assumed that the members of the department are evenly distributed in 130 fire stations and ambulance depots.</li> <li>It is also assumed that the members in the same station or depots will have 2 shifts each day.</li> </ul>

Notes:

[1] Reference is made to an approved EIA Study on Hong Kong Section of Guangzhou – Shenzhen – Hong Kong Express Rail Link.



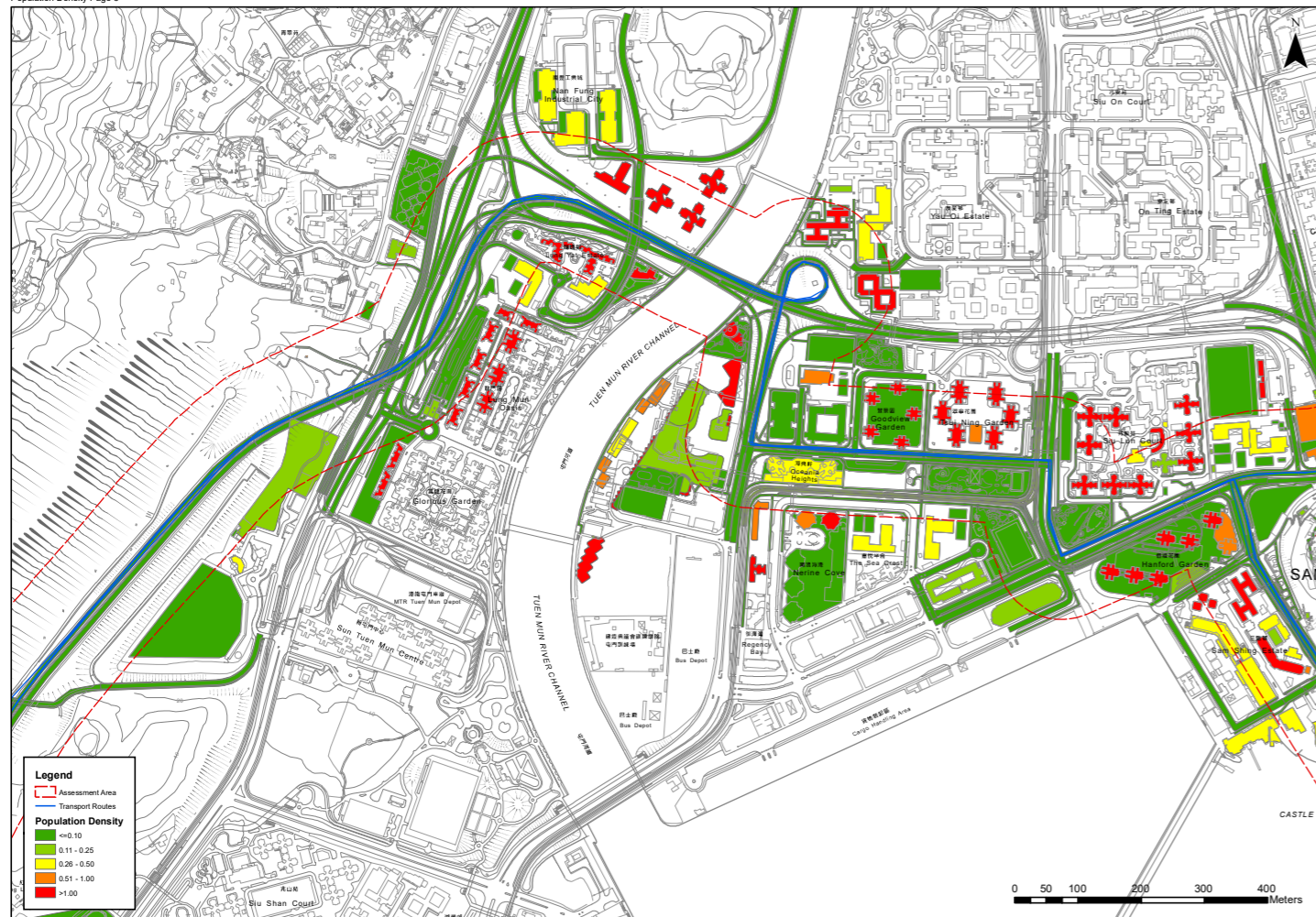
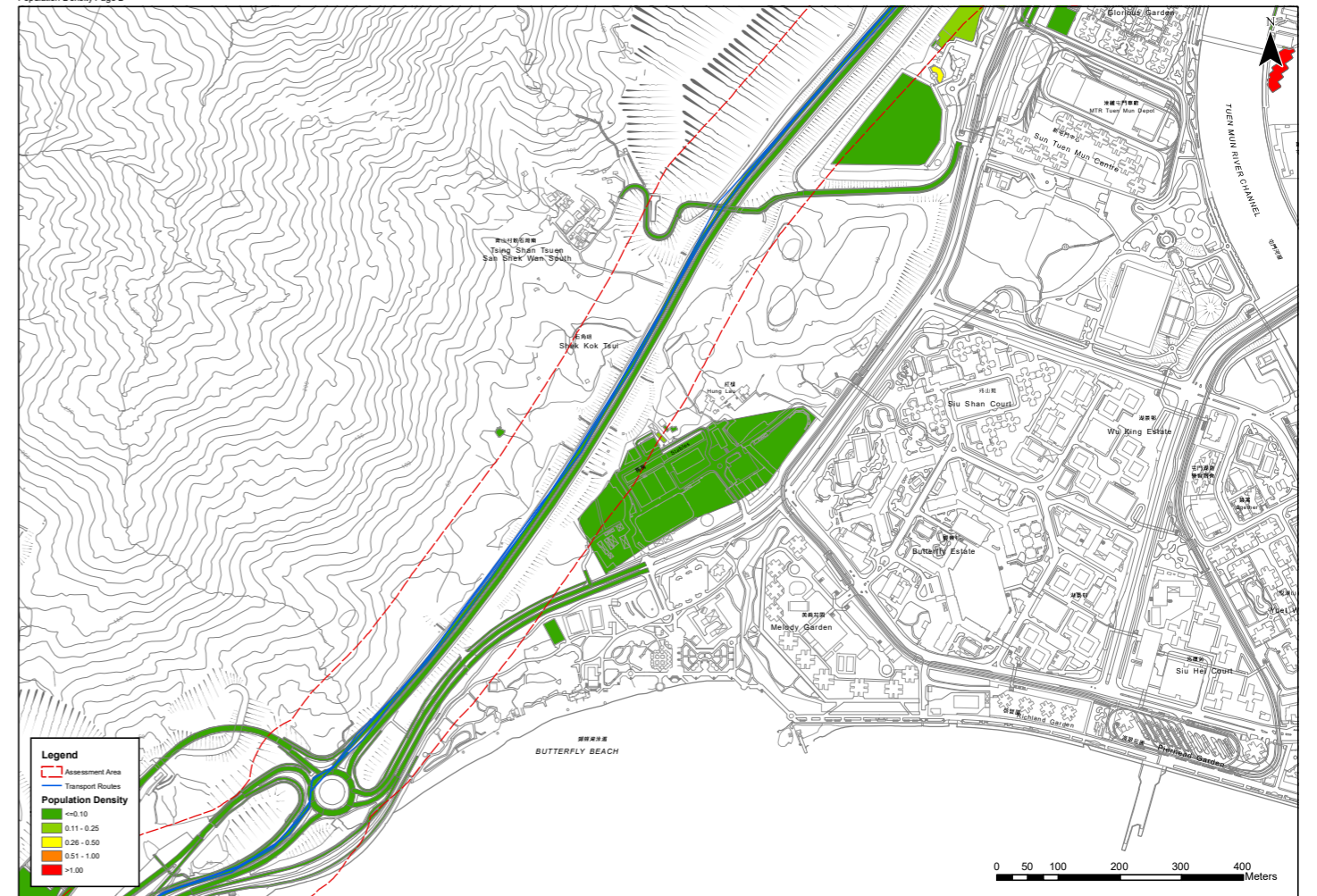
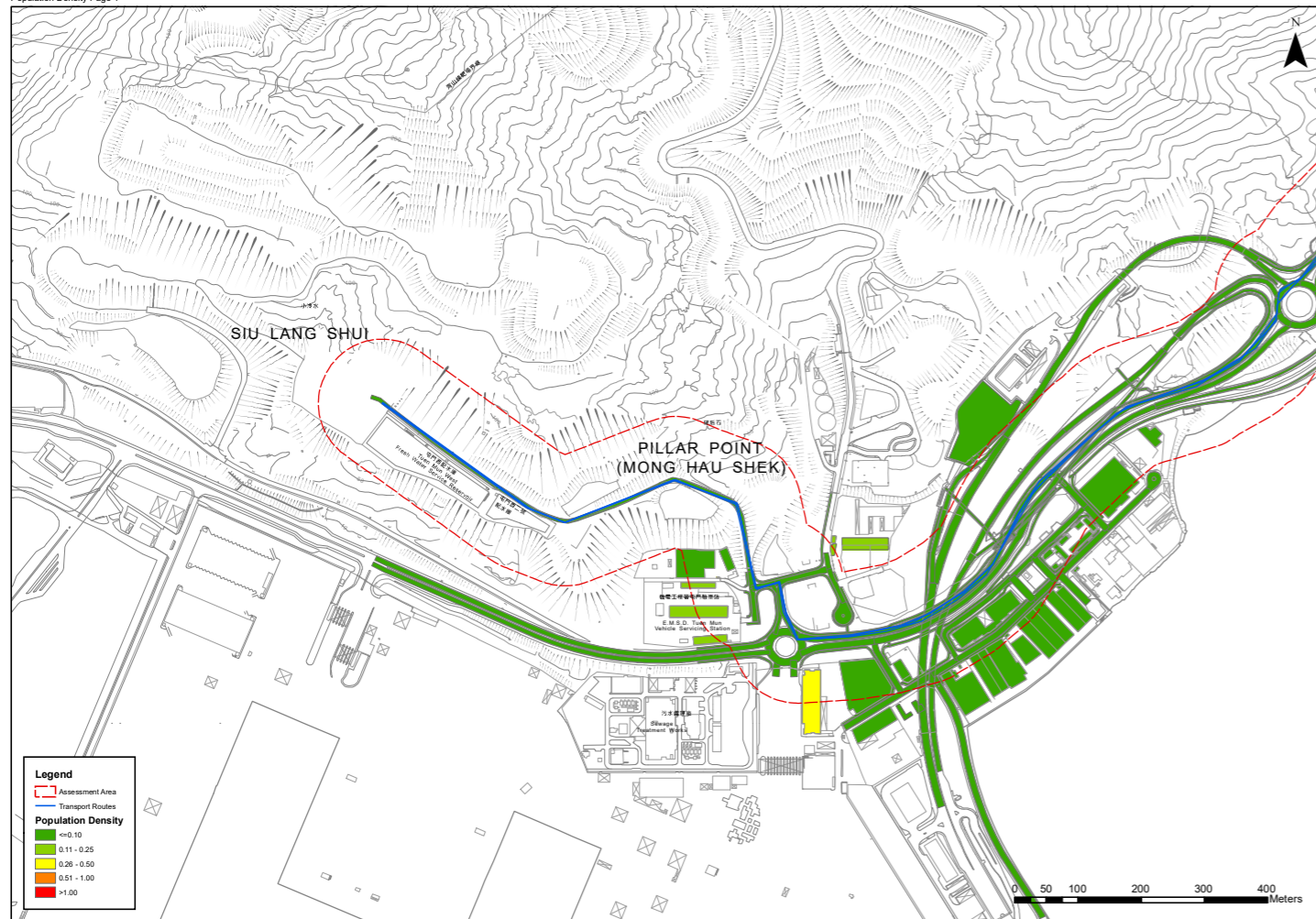


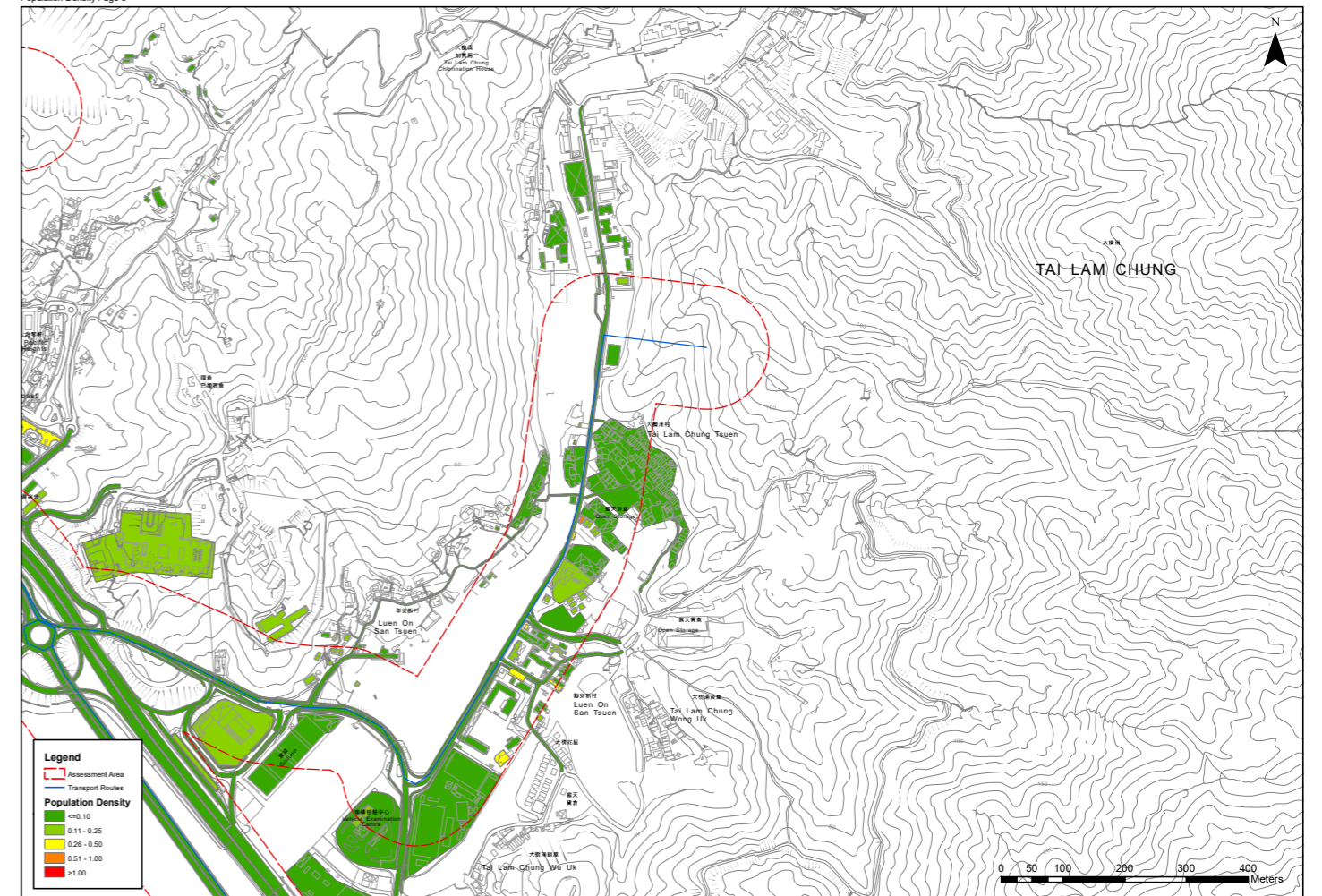
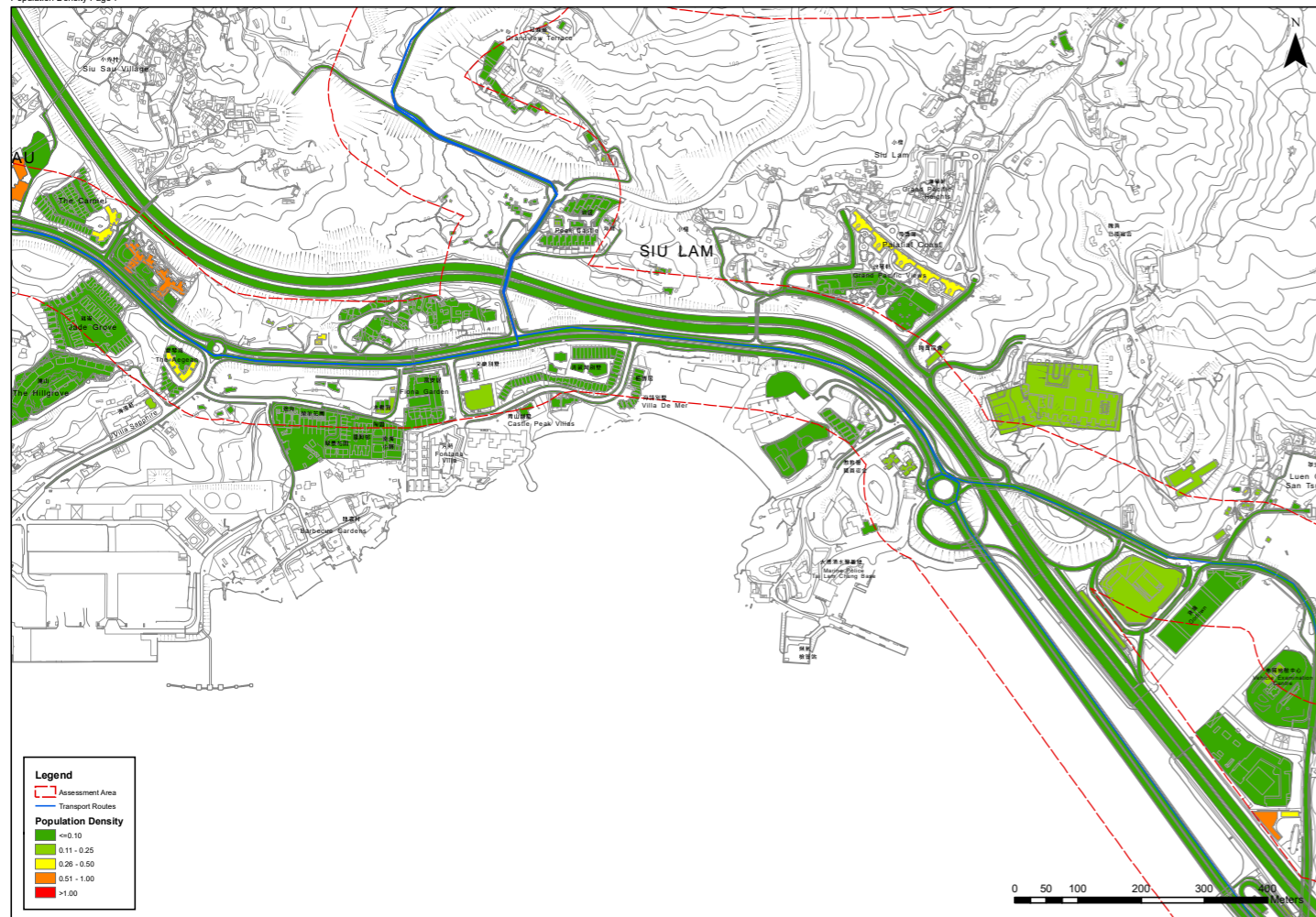
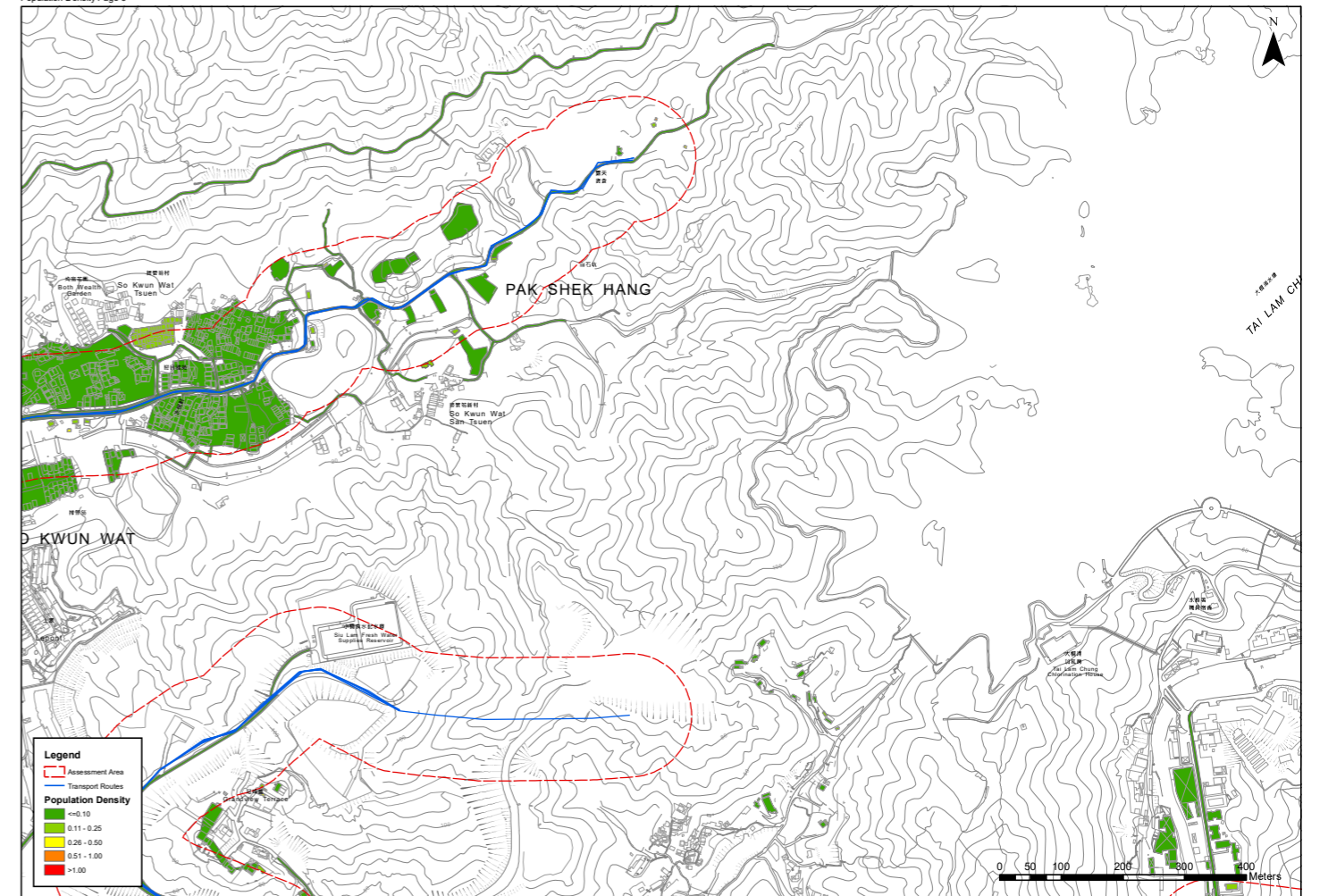


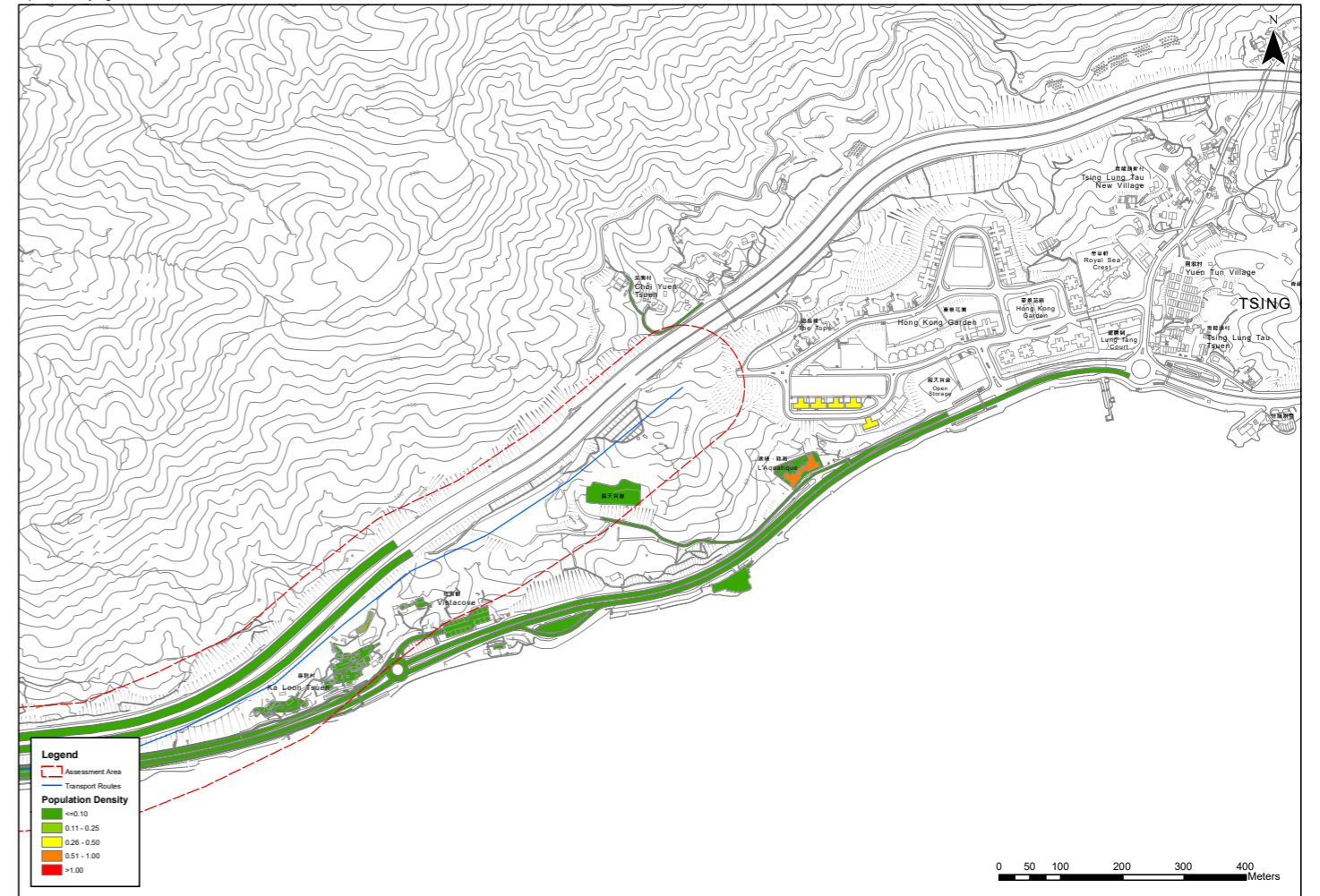
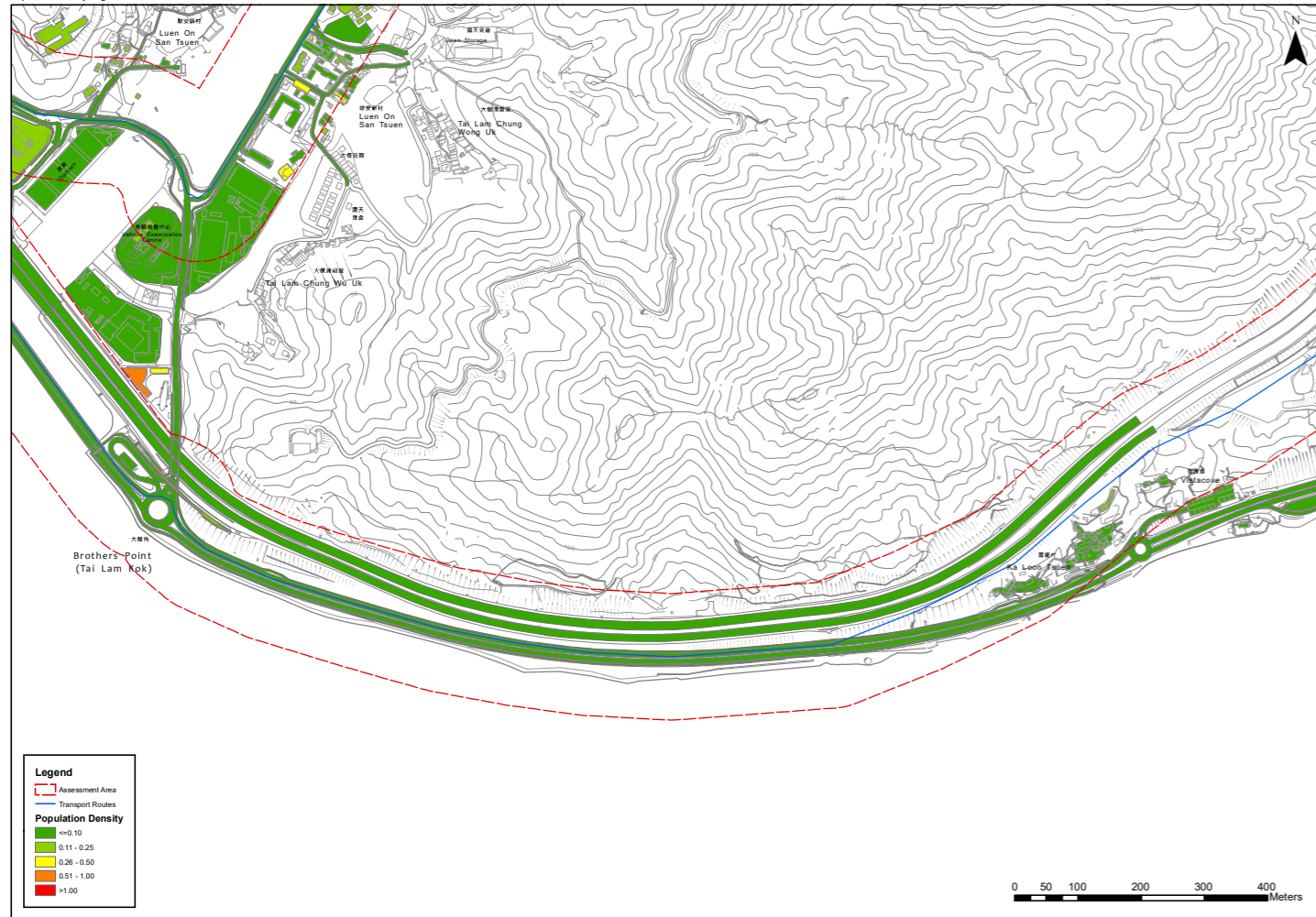
## **Annex 2**

### **Population Density**









## **Annex 3**

### **Number of Population**

