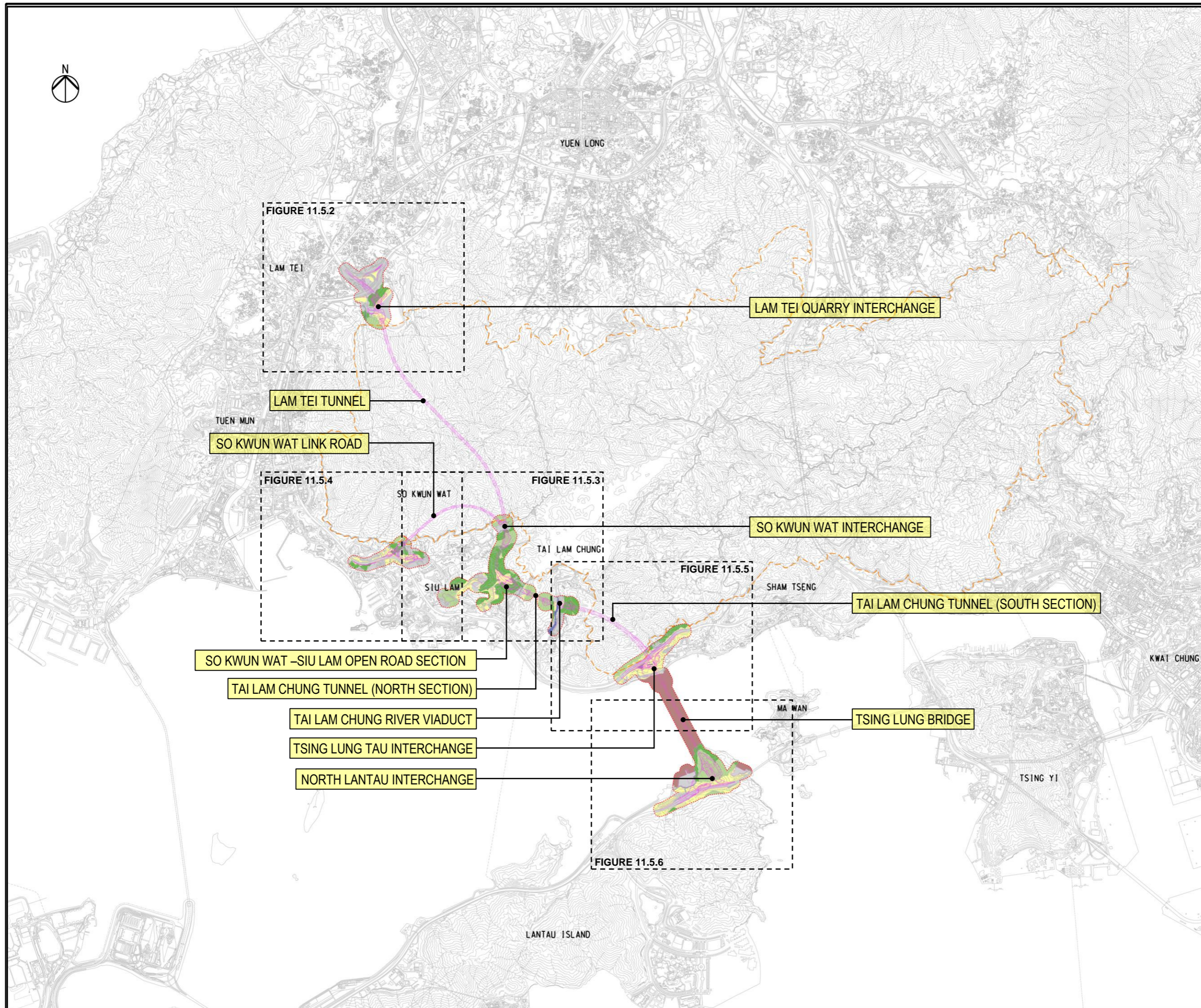




LEGEND

- PROPOSED ELEVATED / AT-GRADE ROAD
- PROPOSED TUNNEL
- COUNTRY PARK BOUNDARY



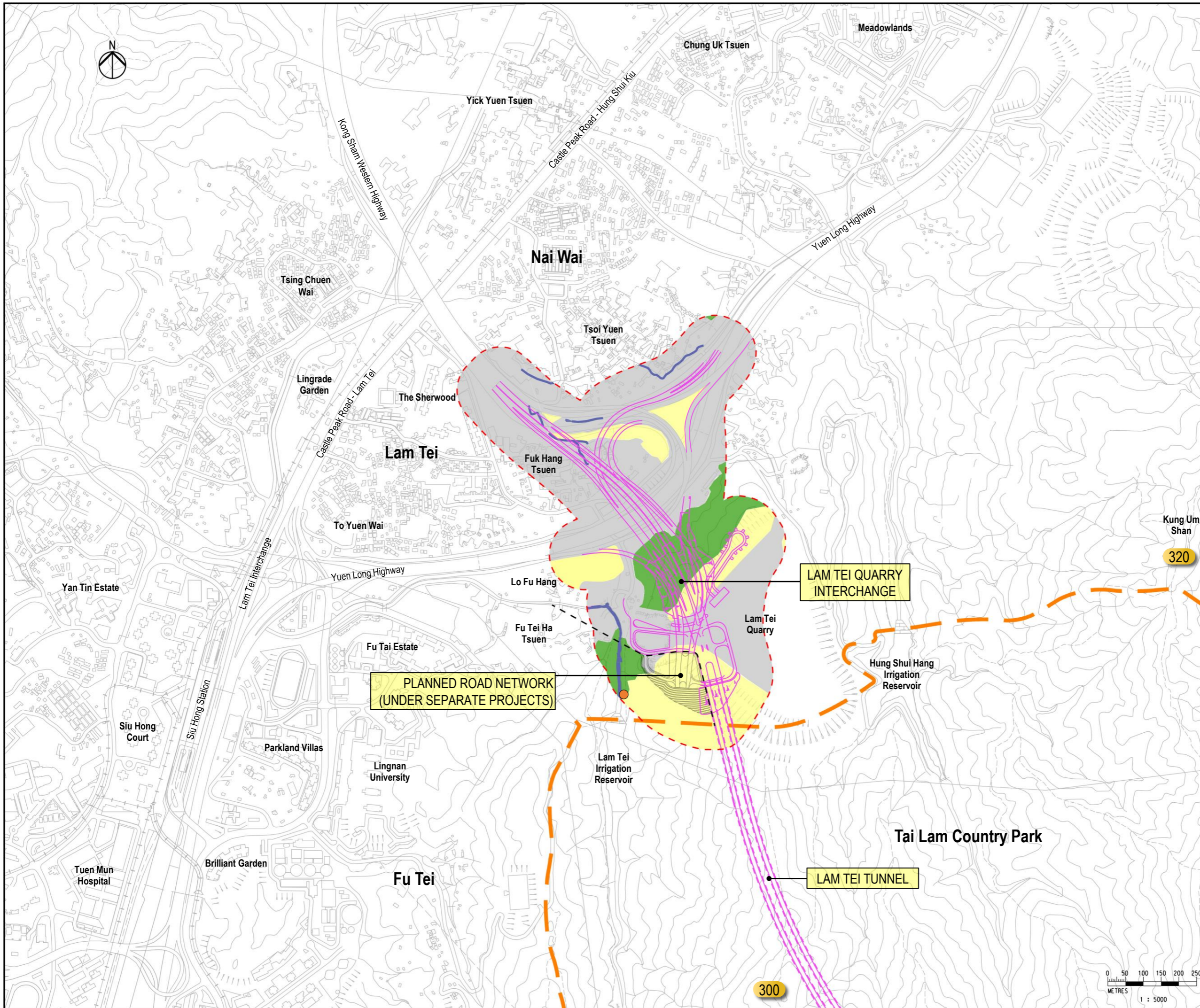
Rev	Description	By	Date
B	REVISION	SK	6/23
A	FIRST ISSUE	SK	5/22

Consultant
ARUP

Project title
Agreement No. CE 13/2021 (HY)
Route 11 (Section between Yuen Long and North Lantau)
- Investigation.

Drawing title
LANDSCAPE RESOURCES KEY PLAN

Drawing no.		Rev.	
FIGURE 11.5.1		B	
Drawn	Date	Checked	Approved
RY	10/21	IL	SK
Scale		Status	
		PRELIMINARY	



- LEGEND**
- PROPOSED ELEVATED / AT-GRADE ROAD
 - PROPOSED TUNNEL
 - PLANNED ROAD NETWORK (UNDER SEPARATE PROJECTS)
 - 100m LANDSCAPE ASSESSMENT AREA
 - COUNTRY PARK BOUNDARY
 - 100 HEIGHT IN +MPD
 - LR-LT1 SECONDARY WOODLANDS IN LAM TEI
 - LR-LT2 PLANTATIONS IN LAM TEI
 - LR-LT7 WATERCOURSES IN LAM TEI
 - LR-LT11 DEVELOPED AREA IN LAM TEI
 - PROPOSED MAGAZINE SITE
 - Aquilaria sinensis* (SAPLING)

Note:
For details of *Aquilaria sinensis*, refer to Section 9.4.2 of the Ecology Chapter.

B	REVISION	SK	6/23
A	FIRST ISSUE	SK	5/22
Rev	Description	By	Date

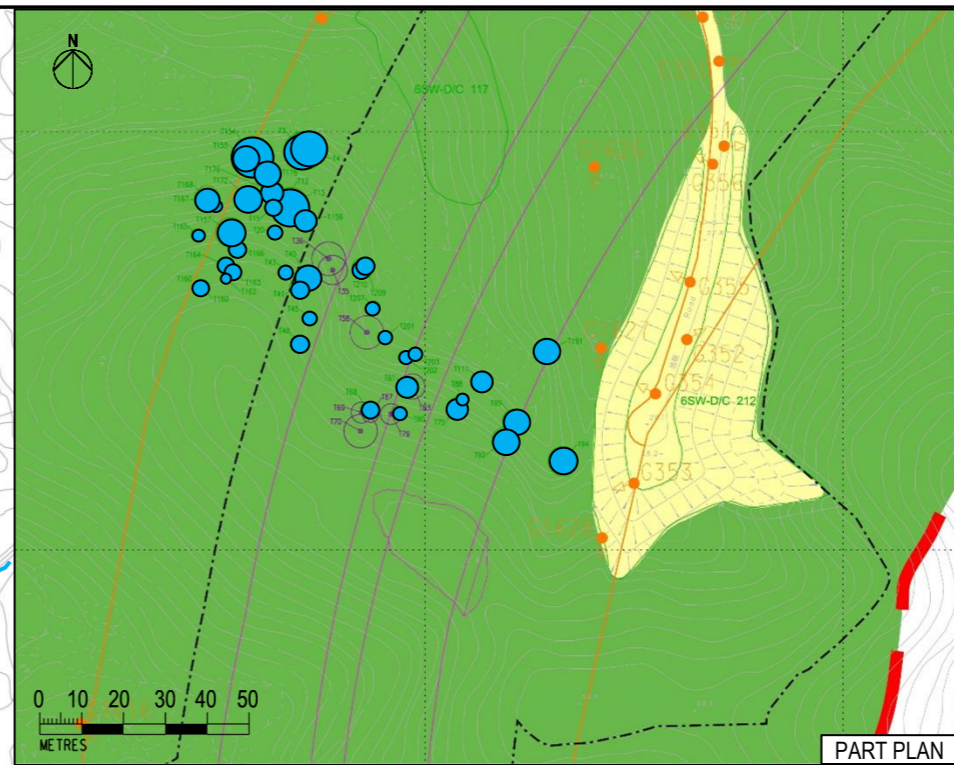
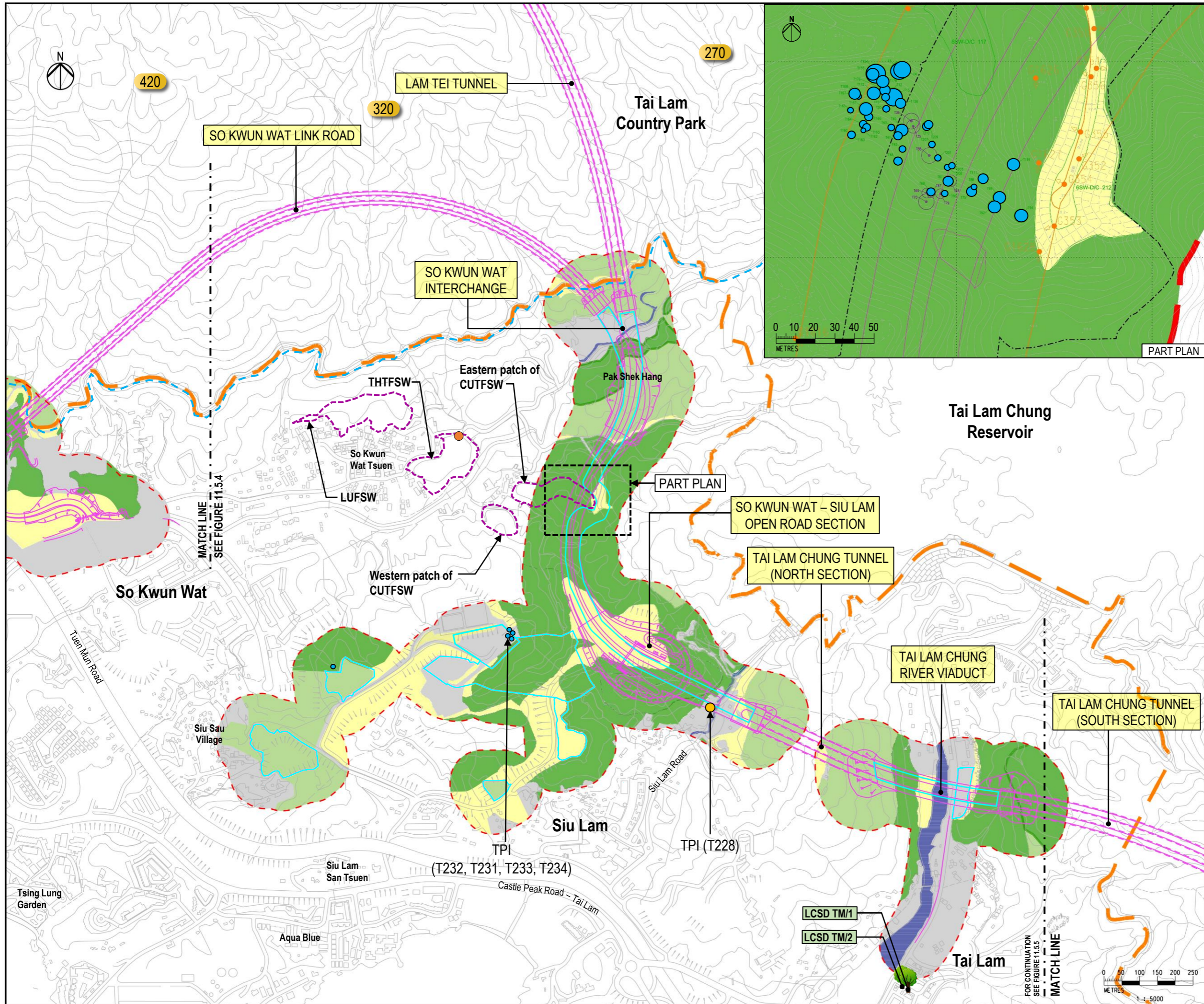
Consultant

ARUP

Project title
Agreement No. CE 13/2021 (HY)
Route 11 (Section between Yuen Long and North Lantau)
- Investigation.

Drawing title
LANDSCAPE RESOURCES – LAM TEI

Drawing no. FIGURE 11.5.2		Rev. B	
Drawn RY	Date 10/21	Checked IL	Approved SK
Scale		Status PRELIMINARY	



- LEGEND**
- PROPOSED ELEVATED / AT-GRADE ROAD
 - - - PROPOSED TUNNEL
 - PROPOSED TEMPORARY WORKS AREA / HAUL ROAD
 - 100m LANDSCAPE ASSESSMENT AREA
 - - - COUNTRY PARK BOUNDARY
 - 100 HEIGHT IN +MPD
 - - - MACLEHOSE TRAIL SECTION 10
 - REGISTERED OLD AND VALUABLE TREE (OVT)
 - LR-SK1 SECONDARY WOODLANDS IN SO KWUN WAT
 - LR-SK2 PLANTATIONS IN SO KWUN WAT
 - LR-SK4 SHRUBLANDS IN SO KWUN WAT
 - LR-SK7 WATERCOURSES IN SO KWUN WAT
 - LR-SK11 DEVELOPED AREAS IN SO KWUN WAT
 - TREE OF PARTICULAR INTEREST (DBH > 1M)
 - TREE OF PARTICULAR INTEREST (*Ixonanthes reticulata*)
 - FUNG SHUI WOODLAND (FSW)
 - LUFWSW - Li Uk FSW
 - THTFSW - Tin Hau Temple FSW
 - CUTFSW - Ching Uk Tsuen FSW
 - *Aquilaria sinensis* (SAPLING)

Note:
For details of Fung Shui Woodlands and *Aquilaria sinensis*, refer to Section 9.2.3 and Section 9.4.2 of the Ecology Chapter.

B	REVISION	SK	6/23
A	FIRST ISSUE	SK	5/22
Rev	Description	By	Date

Consultant
ARUP

Project title
Agreement No. CE 13/2021 (HY)
Route 11 (Section between Yuen Long and North Lantau) - Investigation.

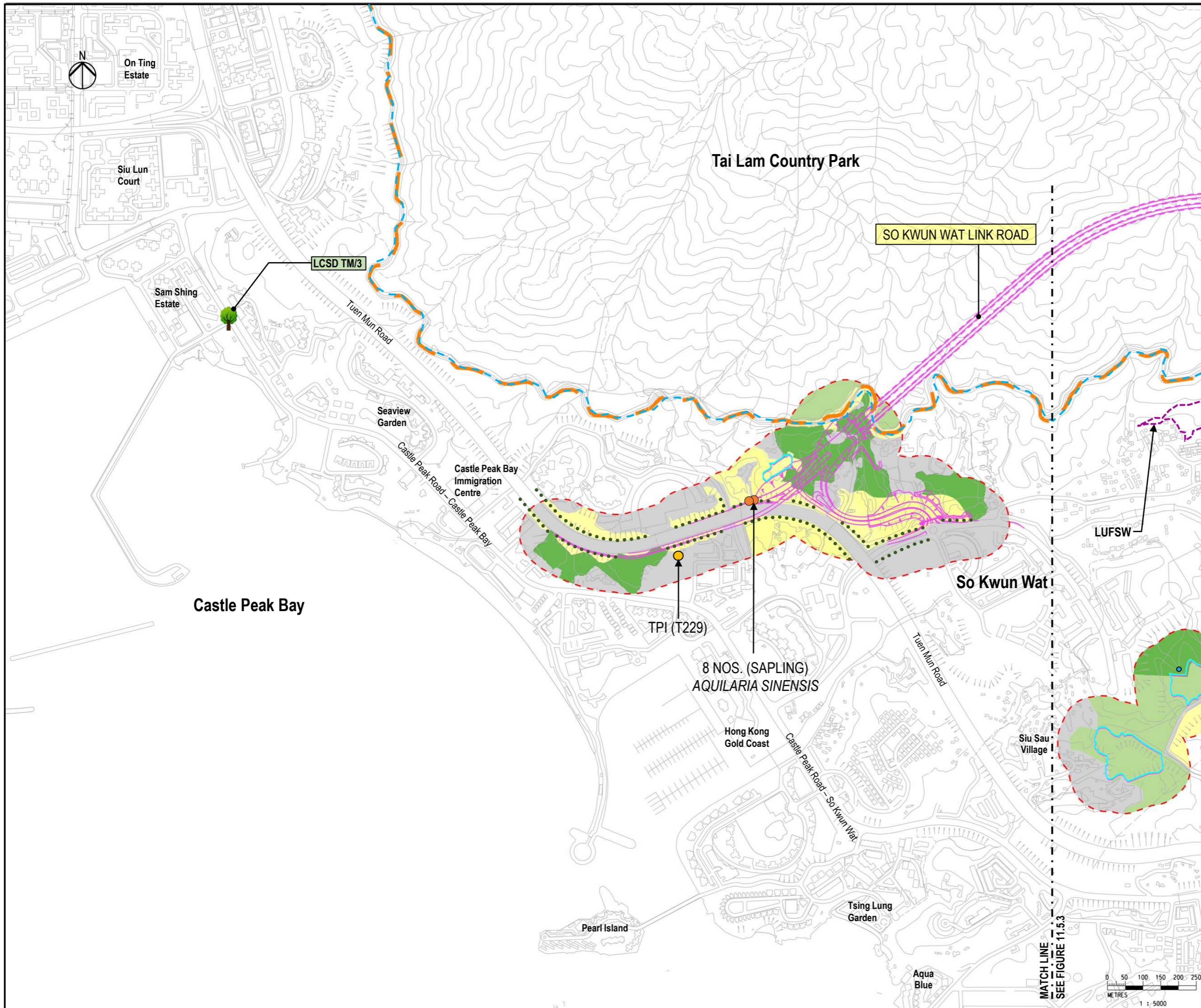
Drawing title
LANDSCAPE RESOURCES - SO KWUN WAT (SHEET 1 OF 2)

Drawing no. FIGURE 11.5.3		Rev. B	
Drawn RY	Date 10/21	Checked IL	Approved SK
Scale	Status	PRELIMINARY	

FOR CONTINUATION SEE FIGURE 11.5.5

MATCH LINE SEE FIGURE 11.5.4

MATCH LINE



- LEGEND**
- PROPOSED ELEVATED / AT-GRADE ROAD
 - PROPOSED TUNNEL
 - PROPOSED TEMPORARY WORKS AREA / HAUL ROAD
 - 100m LANDSCAPE ASSESSMENT AREA
 - COUNTRY PARK BOUNDARY
 - HEIGHT IN +MPD
 - MACLEHOSE TRAIL SECTION 10
 - REGISTERED OLD AND VALUABLE TREE (OVT)
 - LR-SK1 SECONDARY WOODLANDS IN SO KWUN WAT
 - LR-SK2 PLANTATIONS IN SO KWUN WAT
 - LR-SK4 SHRUBLANDS IN SO KWUN WAT
 - LR-SK11 DEVELOPED AREAS IN SO KWUN WAT
 - LR-SK-12 CARRIAGEWAY AND ROADSIDE PLANTER IN SO KWUN WAT
 - TREE OF PARTICULAR INTEREST (DBH >1M)
 - TREE OF PARTICULAR INTEREST (*Ixonanthes reticulata*)
 - FUNG SHUI WOODLAND (FSW)
 - LUFWSW – LI UK FSW
 - Aquilaria sinensis* (SAPLING)
- Note:
For details of Fung Shui Woodlands and *Aquilaria sinensis*, refer to Section 9.2.3 and Section 9.4.2 of the Ecology Chapter.

B	SECOND ISSUE	SK	12/22
A	FIRST ISSUE	SK	5/22
Rev	Description	By	Date

Consultant

ARUP

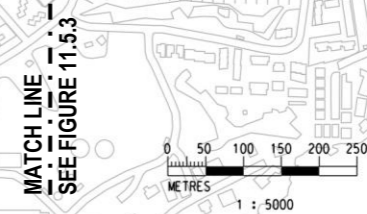
Project title

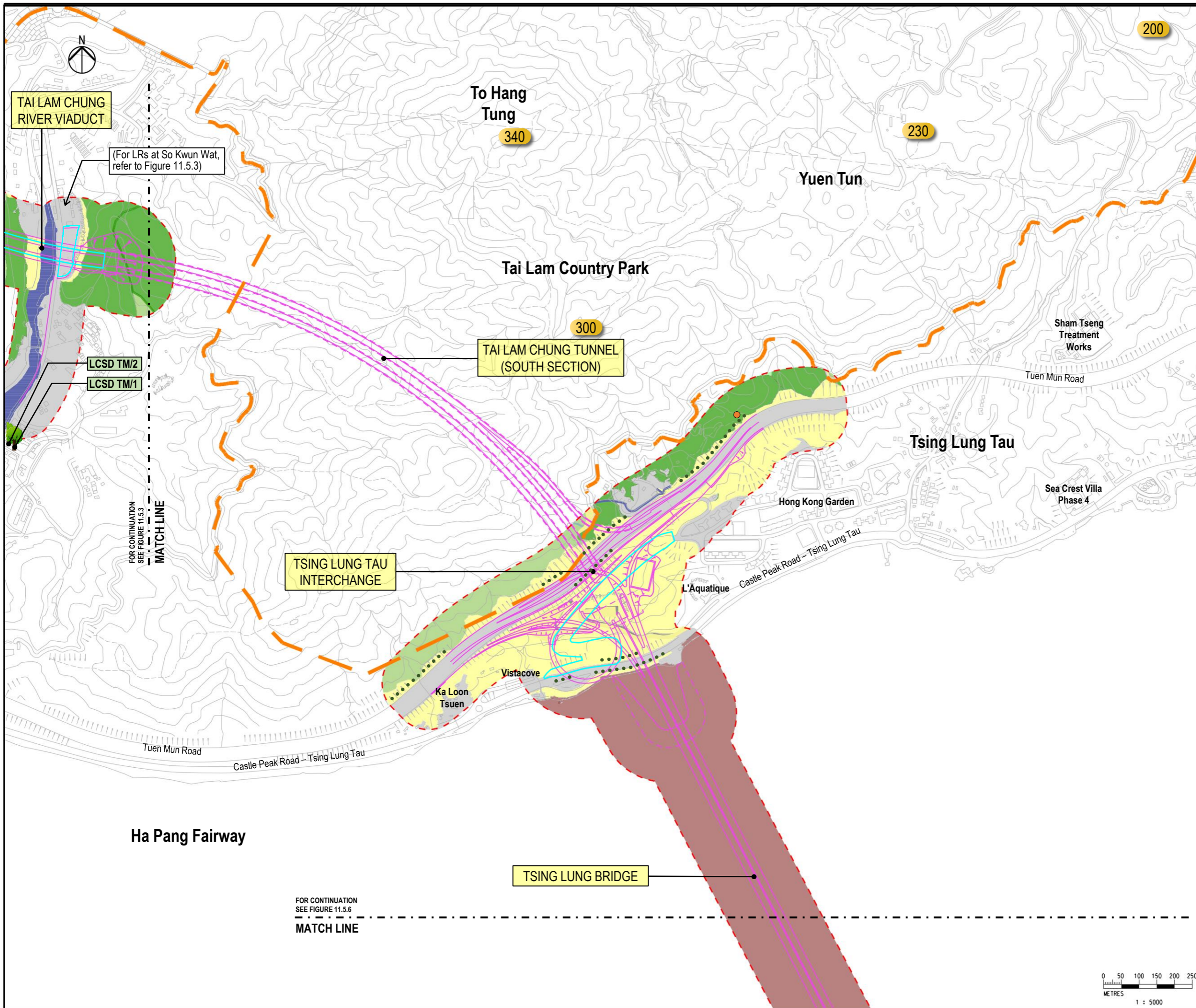
Agreement No. CE 13/2021 (HY)
Route 11 (Section between Yuen Long and North Lantau)
- Investigation.

Drawing title

LANDSCAPE RESOURCES -
SO KWUN WAT
(SHEET 2 OF 2)

Drawing no.		Rev.	
FIGURE 11.5.4		B	
Drawn	Date	Checked	Approved
RY	10/21	IL	SK
Scale	Status		PRELIMINARY





- LEGEND**
- PROPOSED ELEVATED / AT-GRADE ROAD
 - - - PROPOSED TUNNEL
 - PROPOSED TEMPORARY WORKS AREA / HAUL ROAD
 - 100m LANDSCAPE ASSESSMENT AREA
 - COUNTRY PARK BOUNDARY
 - 100 HEIGHT IN +MPD
 - REGISTERED OLD AND VALUABLE TREE (OVT)
 - LR-TL1 SECONDARY WOODLANDS IN TSING LUNG TAU
 - LR-TL2 PLANTATIONS / MIXED WOODLANDS IN TSING LUNG TAU
 - LR-TL4 SHRUBLANDS IN TSING LUNG TAU
 - LR-TL7 WATERCOURSES IN TSING LUNG TAU
 - LR-TL11 DEVELOPED AREAS IN TSING LUNG TAU
 - LR-NL10 SEAWATER BODY AND SHORELINE IN HA PANG FAIRWAY (REFER TO LR - NORTH LANTAU)
 - CARRIAGEWAY AND ROADSIDE PLANTER IN TSING LUNG TAU
 - *Aquilaria sinensis* (SAPLING)

Note:
For details of *Aquilaria sinensis*, refer to Section 9.4.2 of the Ecology Chapter.

B	REVISION	SK	6/23	
A	FIRST ISSUE	SK	5/22	
Rev	Description	By	Date	

Consultant
ARUP

Project title
Agreement No. CE 13/2021 (HY)
Route 11 (Section between Yuen Long and North Lantau)
- Investigation.

Drawing title
LANDSCAPE RESOURCES – TSING LUNG TAU

Drawing no. FIGURE 11.5.5		Rev. B	
Drawn RY	Date 10/21	Checked IL	Approved SK
Scale		Status PRELIMINARY	

COPYRIGHT RESERVED

路政署
HIGHWAYS DEPARTMENT



FOR CONTINUATION
SEE FIGURE 11.5.3
MATCH LINE

FOR CONTINUATION
SEE FIGURE 11.5.6
MATCH LINE



FOR CONTINUATION
SEE FIGURE 11.5.5

MATCH LINE

Ha Pang Fairway

TSING LUNG BRIDGE

Kwai Shek

Ng Kwu Leng

To Kau Wan

Kap Shui Mun Bridge

Tai Chuen

Tsing Chau Wan

Yi Chuen

NORTH LANTAU INTERCHANGE

Fa Peng Teng

270

Sam Chuen

Tso Wan

Tai Yam Teng

180

Fa Peng

Tam Shui Wan

Shek Tsai Wan

Park Island

Ma Wan

Kung Tsai Wan

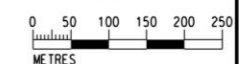
Lung Ha Wan

Kap Shui Mun









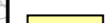
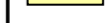



North Lantau Highway

Sunny Bay Station

Ngam Hau Shek



LEGEND

-  PROPOSED ELEVATED / AT-GRADE ROAD
-  PROPOSED TUNNEL
-  PROPOSED TEMPORARY WORKS AREA / HAUL ROAD
-  100m LANDSCAPE ASSESSMENT AREA
-  100 HEIGHT IN +MPD
-  SECONDARY WOODLANDS IN NORTH LANTAU
-  PLANTATIONS IN NORTH LANTAU
-  SHRUBLANDS IN NORTH LANTAU
-  WATERCOURSES IN NORTH LANTAU
-  SEAWATER BODY AND SHORELINES AT HA PANG FAIRWAY
-  DEVELOPED AREAS IN NORTH LANTAU
-  CARRIAGEWAY AND ROADSIDE PLANTER IN NORTH LANTAU
-  LR-NL-12

Rev	Description	By	Date
B	REVISION	SK	6/32
A	FIRST ISSUE	SK	5/22

Consultant
ARUP

Project title
Agreement No. CE 13/2021 (HY)
Route 11 (Section between Yuen Long and North Lantau)
- Investigation.

Drawing title
LANDSCAPE RESOURCES – NORTH LANTAU

Drawing no. **FIGURE 11.5.6** Rev. **B**

Drawn	Date	Checked	Approved
RY	10/21	IL	SK
Scale	Status	PRELIMINARY	

COPYRIGHT RESERVED
 路政署
HIGHWAYS DEPARTMENT