

LEGEND

- PROPOSED ELEVATED / AT-GRADE ROAD
- - - PROPOSED TUNNEL
- MACLEHOSE TRAIL SECTION 10
- - - VISUAL ENVELOPE

FIGURE 11.6.2

LAM TEI

LAM TEI QUARRY INTERCHANGE

LAM TEI TUNNEL

TUEN MUN

SO KWUN WAT LINK ROAD

FIGURE 11.6.4

SO KWUN WAT

FIGURE 11.6.3

SO KWUN WAT INTERCHANGE

TAI LAM CHUNG

FIGURE 11.6.5

SHAM TSENG

FIGURE 11.6.7

TAI LAM CHUNG TUNNEL (SOUTH SECTION)

SIU LAM

SO KWUN WAT - SIU LAM OPEN ROAD SECTION

TAI LAM CHUNG TUNNEL (NORTH SECTION)

MA IWAN

TSING LUNG BRIDGE

TAI LAM CHUNG RIVER VIADUCT

TSING LUNG TAU INTERCHANGE

NORTH LANTAU INTERCHANGE

FIGURE 11.6.6

LANTAU ISLAND

TSING YI

KWAI CHUNG

Rev	Description	By	Date
B	REVISION	BS	06/23
A	FIRST ISSUE	BS	06/22

Consultant

ARUP

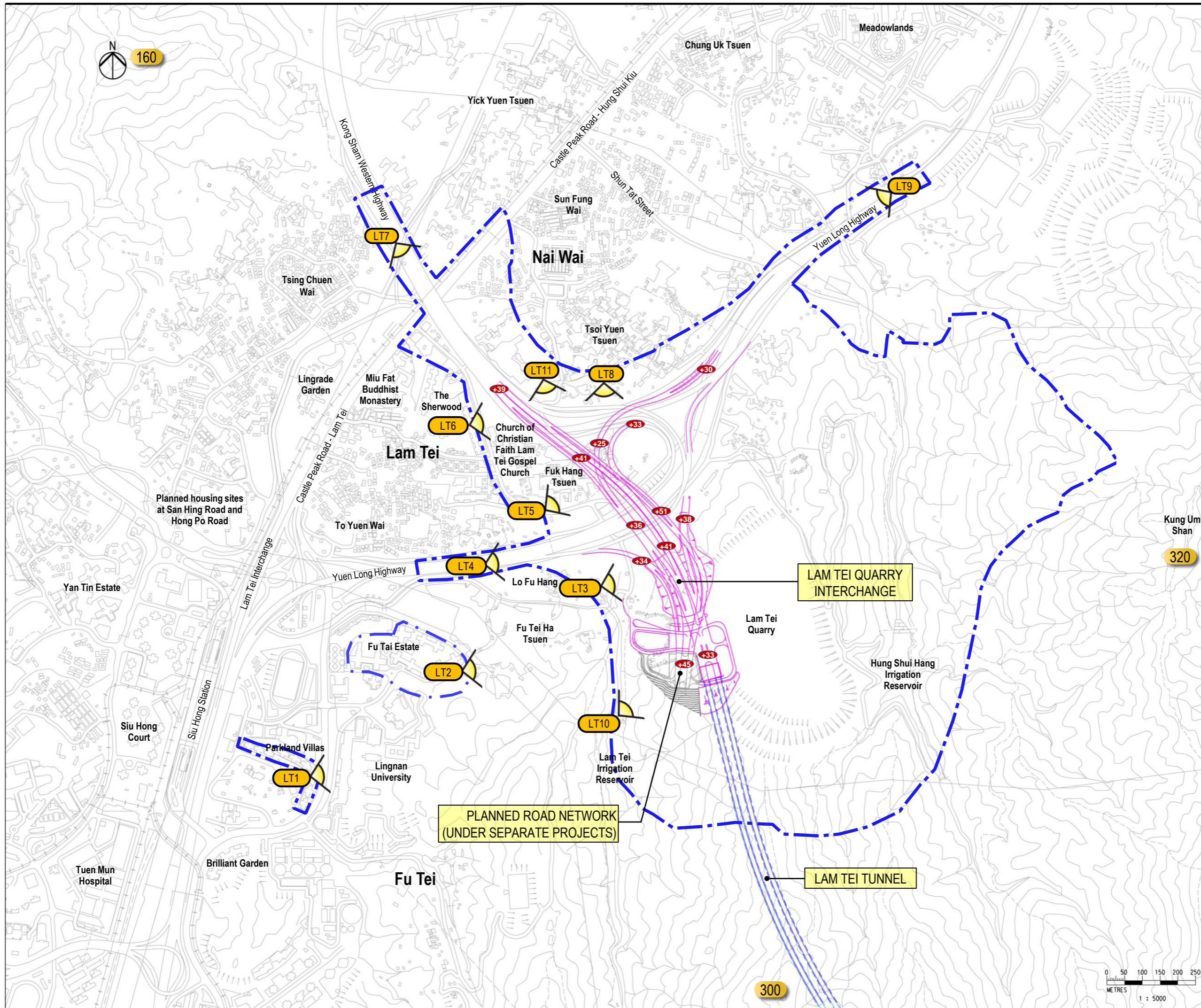
Project title

Agreement No. CE 13/2021 (HY)
Route 11 (Section between Yuen Long and North Lantau)
- Investigation.

Drawing title

VISUAL ENVELOPE
KEY PLAN

Drawing no.		Rev.	
FIGURE 11.6.1		B	
Drawn	Date	Checked	Approved
RY	10/21	IL	SK
Scale	Status		
N. T. S.	PRELIMINARY		



LEGEND

- PROPOSED ELEVATED / AT-GRADE ROAD
- - - PROPOSED TUNNEL
- · - · - VISUAL ENVELOPE
- PLANNED ROAD NETWORK (UNDER SEPARATE PROJECTS)
- 100 HEIGHT IN +MPD
- VSR VIEWING POINT

VSRs at Lam Tei (LT)

VSR-LT1	Residents of Parkland Villas
VSR-LT2	Residents of Fu Tai Estate
VSR-LT3	Residents of Lo Fu Hang
VSR-LT4	Vehicle Travellers on Yuen Long Highway (Eastbound)
VSR-LT5	Residents of Fuk Hang Tsuen
VSR-LT6	Residents of The Sherwood
VSR-LT7	Vehicle Travellers on Kong Sham Western Highway (Southbound)
VSR-LT8	Residents of Tsoi Yuen Tsuen
VSR-LT9	Vehicle Travellers on Yuen Long Highway (Westbound)
VSR-LT10	Trail Walkers on Fu Tei Country Trail and Lam Tei Irrigation Reservoir
VSR-LT11	Future Residents of Potential Residential Development at Brownfield Clusters in Lam Tei North and Nai Wai

Rev	Description	By	Date
B	REVISION	BS	06/23
A	FIRST ISSUE	BS	06/22

Consultant

ARUP

Project title

Agreement No. CE 13/2021 (HY)
Route 11 (Section between Yuen Long and North Lantau)
- Investigation.

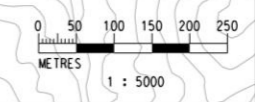
Drawing title

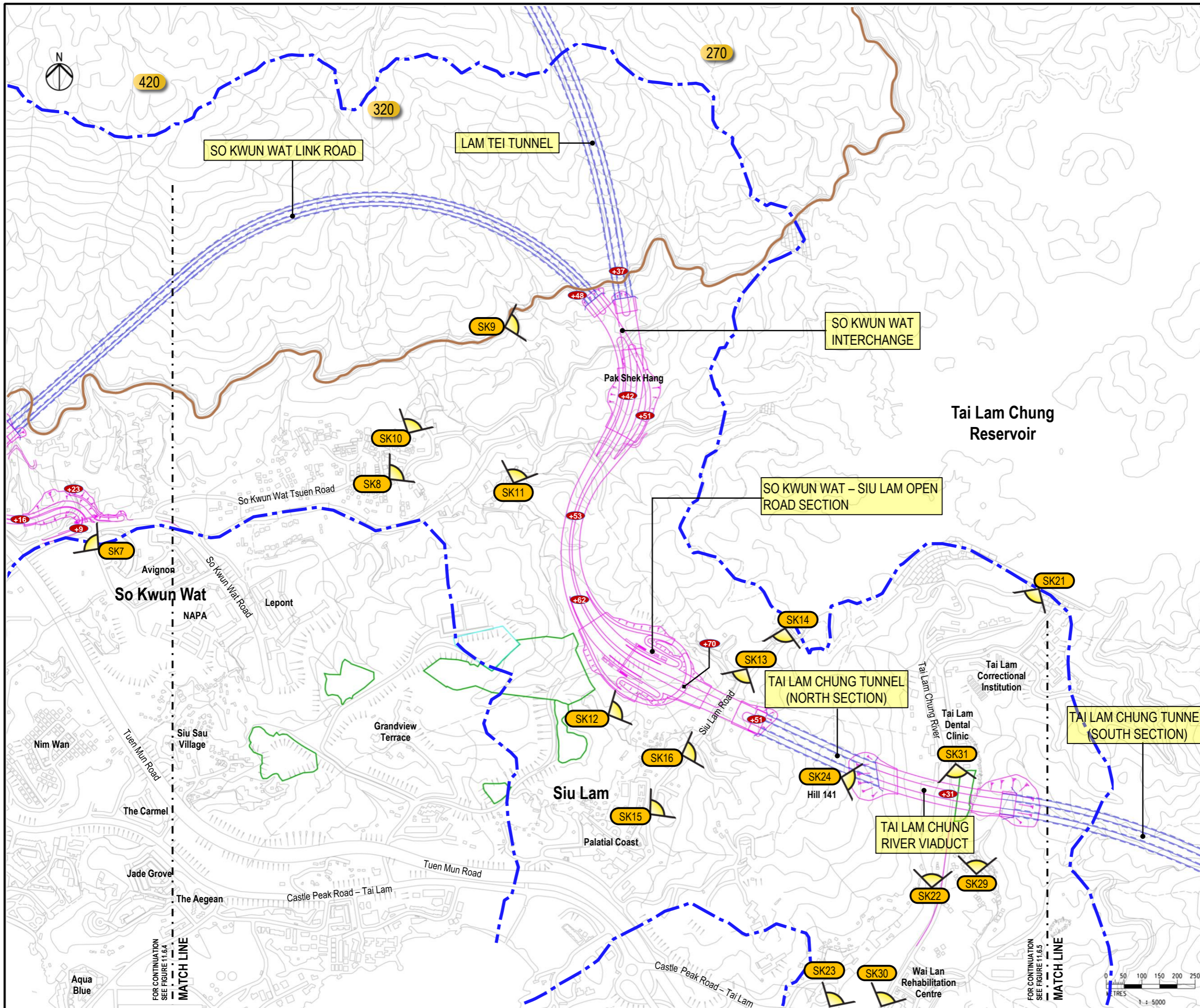
VISUALLY SENSITIVE RECEIVERS – LAM TEI

Drawing no. Rev. B

Drawn RY	Date 10/21	Checked IL	Approved SK
Scale 1 : 5000 @A1	Status PRELIMINARY	COPYRIGHT RESERVED	

路政署
HIGHWAYS DEPARTMENT





LEGEND

- PROPOSED ELEVATED / AT-GRADE ROAD
- - - PROPOSED TUNNEL
- · - · - VISUAL ENVELOPE
- 100 HEIGHT IN +MPD
- LT.1 VSR VIEWING POINT
- MACLEHOSE TRAIL SECTION 10
- PROPOSED MAGAZINE SITE
- TEMPORARY WORKS AREA

VSRs at So Kwun Wat (SK)

VSR-SK7	Residents of Avignon
VSR-SK8	Vehicle Travellers and Pedestrians on So Kwun Wat Tsuen Road
VSR-SK9	Trail Walkers on MacLehose Trail Section 10 (East)
VSR-SK10	Residents of So Kwun Wat Tsuen
VSR-SK11	Residents of So Kwun Wat San Tsuen
VSR-SK12	Visitors to Glorious Praise Fellowship (Hong Kong) Treatment Centre
VSR-SK13	Vehicle Travellers on Siu Lam Road
VSR-SK14	Trail Walkers on Tai Lam Chung Reservoir Subsidiary Dam at Siu Lam Road
VSR-SK15	Residents of Palatial Coast
VSR-SK16	Residents of Siu Lam
VSR-SK21	Trail Walkers and Cyclists on Tai Lam Chung Reservoir Main Dam
VSR-SK22	Pedestrians on Footbridge over Tai Lam Chung River
VSR-SK23	Vehicle Travellers and Pedestrians on Castle Peak Road - Tai Lam
VSR-SK24	Trail Walkers on Summit of Hill 141
VSR-SK29	Residents of Tai Lam Chung Tsuen
VSR-SK30	Students and Staff at Hong Kong Customs College
VSR-SK31	Staff and Visitors at Tai Lam Correctional Institution

B	REVISION	BS	06/23
A	FIRST ISSUE	BS	06/22
Rev	Description	By	Date

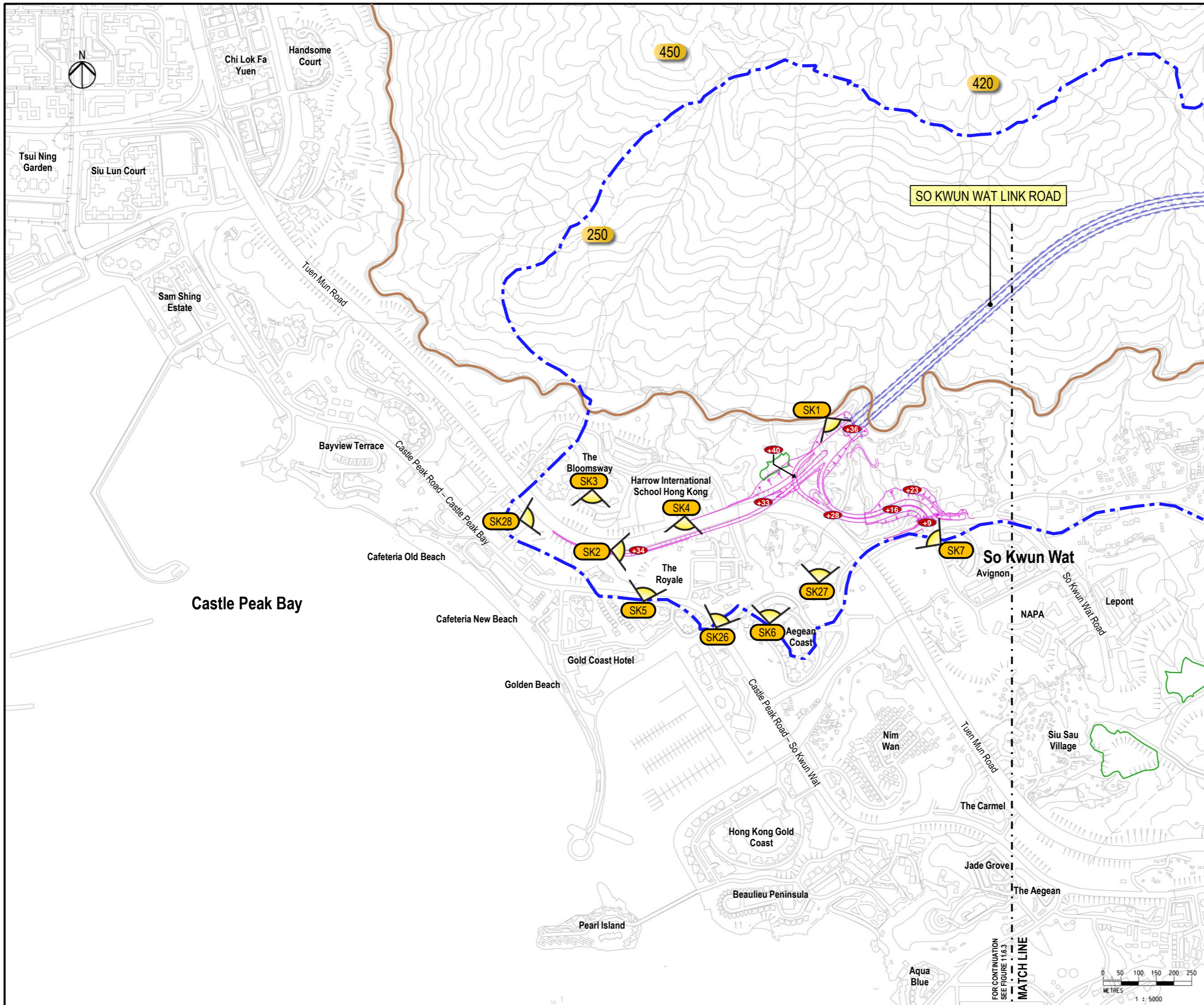
Consultant
ARUP

Project title
Agreement No. CE 13/2021 (HY)
Route 11 (Section between Yuen Long and North Lantau) - Investigation.

Drawing title
VISUALLY SENSITIVE RECEIVERS - SO KWUN WAT (SHEET 1 OF 2)

Drawing no. FIGURE 11.6.3		Rev. B	
Drawn RY	Date 10/21	Checked IL	Approved SK
Scale 1 : 5000 @A1	Status PRELIMINARY	COPYRIGHT RESERVED	

路政署 HIGHWAYS DEPARTMENT



LEGEND

- PROPOSED ELEVATED / AT-GRADE ROAD
- - - PROPOSED TUNNEL
- · - · - VISUAL ENVELOPE
- 100 HEIGHT IN +MPD
- LT1 VSR VIEWING POINT
- MACLEHOSE TRAIL SECTION 10
- TEMPORARY WORKS AREA

VSRs at So Kwun Wat (SK)

VSR-SK1	Trail Walkers on MacLehose Trail Section 10 (West)
VSR-SK2	Vehicle Travellers on Tuen Mun Road
VSR-SK3	Residents of The Bloomsway
VSR-SK4	Students and Staff at Harrow International School Hong Kong
VSR-SK5	Residents of Hong Kong Gold Coast
VSR-SK6	Residents of Aegean Coast
VSR-SK7	Residents of Avignon
VSR-SK26	Vehicle Travellers on Castle Peak Road – So Kwun Wat
VSR-SK27	Students and Staff at PLK Women's Welfare Club Western District Fung Lee Pui Yiu Primary School and S.T.F.A. Lee Kam Primary School
VSR-SK28	Students and Staff at Chu Hai College of Higher Education

Rev	Description	By	Date
B	REVISION	BS	06/23
A	FIRST ISSUE	BS	06/22

Consultant

ARUP

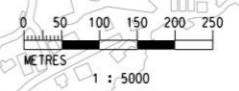
Project title

Agreement No. CE 13/2021 (HY)
Route 11 (Section between Yuen Long and North Lantau)
- Investigation.

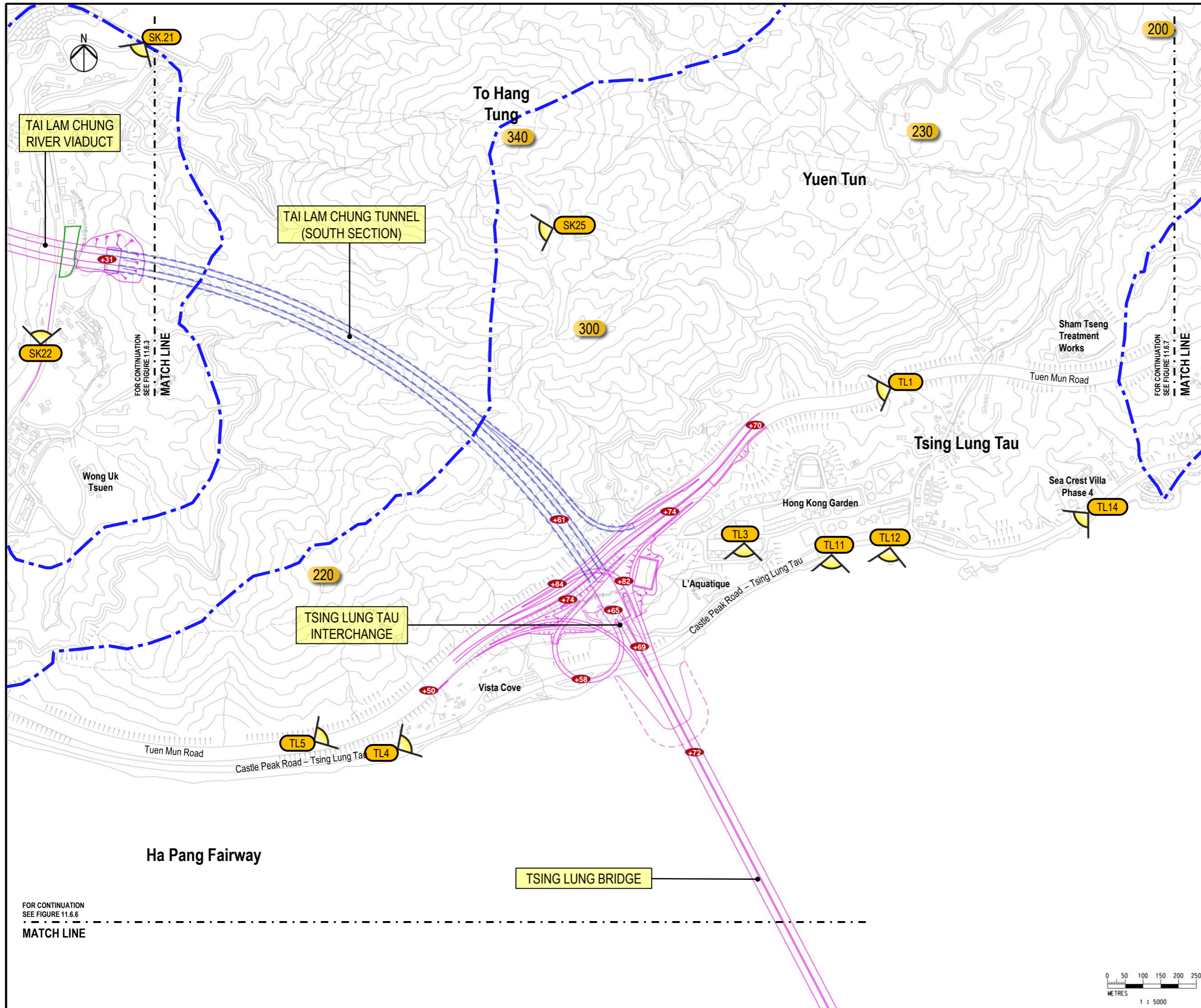
Drawing title

VISUALLY SENSITIVE
RECEIVERS – SO KWUN WAT
(SHEET 2 OF 2)

Drawing no. FIGURE 11.6.4		Rev. B	
Drawn RY	Date 10/21	Checked IL	Approved SK
Scale 1 : 5000 @A1		Status PRELIMINARY	



FOR CONTINUATION
SEE FIGURE 11.6.3
MATCH LINE



LEGEND

- PROPOSED ELEVATED / AT-GRADE ROAD
- - - PROPOSED TUNNEL
- · - · - VISUAL ENVELOPE
- 100 HEIGHT IN +MPD
- LT1 VSR VIEWING POINT
- TEMPORARY WORKS AREA

VSRs at So Kwun Wat (SK)

VSR-SK21	Trail walkers and Cyclists on Tai Lam Chung Reservoir Main Dam
VSR-SK22	Pedestrians on Footbridge over Tai Lam Chung River
VSR-SK25	Trail Walkers at South of To Hang Tung

VSRs at Tsing Lung Tau (TL)

VSR-TL1	Vehicle Travellers on Tuen Mun Road (Westbound)
VSR-TL3	Residents of Hong Kong Garden, Vista Cove and L'Aquatique
VSR-TL4	Vehicle Travellers and Pedestrians on Castle Peak Road – Tsing Lung Tau (Eastbound)
VSR-TL5	Vehicle Travellers on Tuen Mun Road (Eastbound)
VSR-TL11	Pedestrian Footbridge across Castle Peak Road – Tsing Lung Tau
VSR-TL12	Travellers in Tsing Lung Tau Ferry Pier
VSR-TL14	Residents of Sea Crest Villa Phase 4

C	REVISION	BS	08/23
B	REVISION	BS	06/23
A	FIRST ISSUE	BS	06/22
Rev	Description	By	Date



Project title
 Agreement No. CE 13/2021 (HY)
 Route 11 (Section between Yuen Long and North Lantau)
 - Investigation.

Drawing title
VISUALLY SENSITIVE RECEIVERS – TSING LUNG TAU

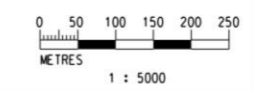
Drawing no.	FIGURE 11.6.5	Rev.	B
-------------	---------------	------	---

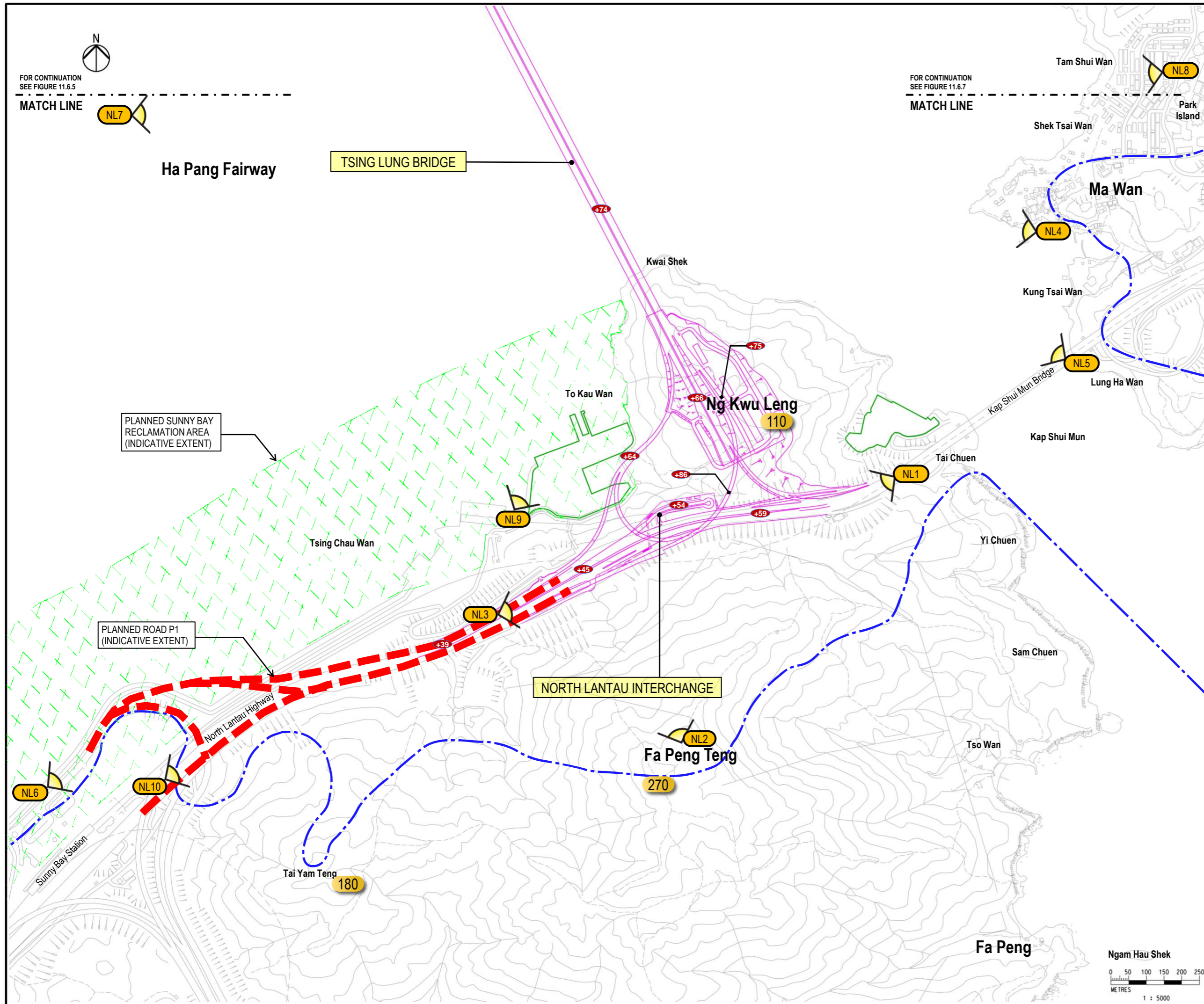
Drawn	Date	Checked	Approved
RY	10/21	IL	SK
Scale	1 : 5000 @A1	Status	PRELIMINARY

COPYRIGHT RESERVED



FOR CONTINUATION
 SEE FIGURE 11.6.6
 MATCH LINE





LEGEND

- PROPOSED ELEVATED / AT-GRADE ROAD
- - - PROPOSED TUNNEL
- · - · - VISUAL ENVELOPE
- - - PLANNED ROAD P1 (INDICATIVE EXTENT)
- ▨ PLANNED SUNNY BAY RECLAMATION AREA (INDICATIVE EXTENT)
- 100 HEIGHT IN +MPD
- LT1 VSR VIEWING POINT
- TEMPORARY WORKS AREA

VSRs at North Lantau (NL)

VSR-NL1	Vehicle Travellers on North Lantau Highway (Westbound)
VSR-NL2	Trail Walkers on Summit of Fa Peng Teng
VSR-NL3	Vehicle Travellers at Lantau Link Toll Plaza
VSR-NL4	Travellers in Ma Wan Public Pier
VSR-NL5	Vehicle Travellers on Kap Shui Mun Bridge
VSR-NL6	Visitors at Sunny Bay Promenade
VSR-NL7	Maritime Travellers in Ha Pang Fairway
VSR-NL8	Residents of Park Island
VSR-NL9	Future Users at Planned Sunny Bay Reclamation Area
VSR-NL10	Future Vehicle Travellers on Planned Road P1

Rev	Description	By	Date
B	REVISION	BS	06/23
A	FIRST ISSUE	BS	06/22



Project title
 Agreement No. CE 13/2021 (HY)
 Route 11 (Section between Yuen Long and North Lantau)
 - Investigation.

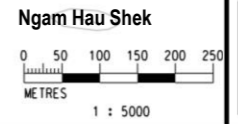
Drawing title
VISUALLY SENSITIVE RECEIVERS – NORTH LANTAU

Drawing no. FIGURE 11.6.6		Rev. B	
Drawn	Date	Checked	Approved
RY	10/21	IL	SK
Scale	Status		
1 : 5000 @A1	PRELIMINARY		

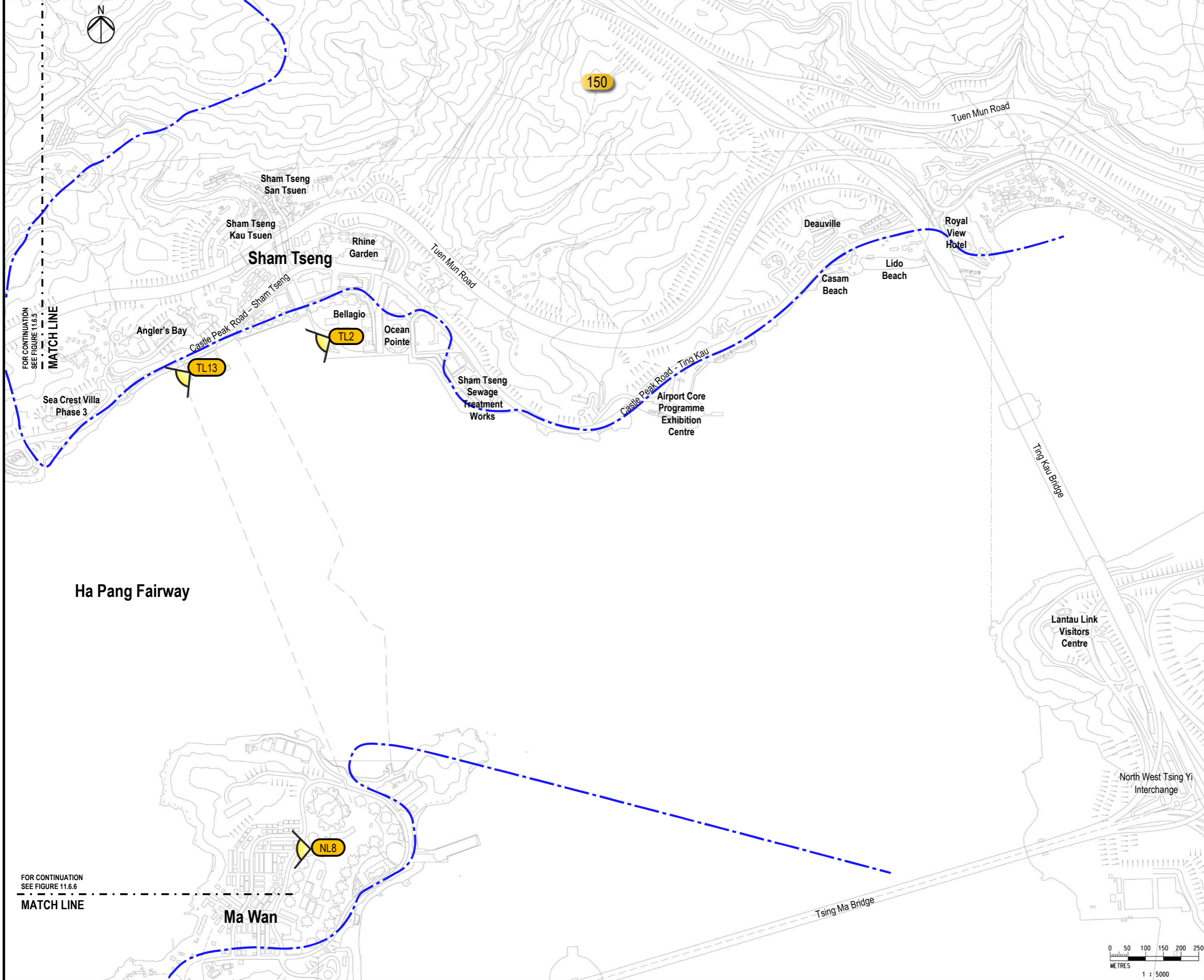


FOR CONTINUATION
 SEE FIGURE 11.6.5
 MATCH LINE

FOR CONTINUATION
 SEE FIGURE 11.6.7
 MATCH LINE



DO NOT SCALE DRAWING. CHECK ALL DIMENSIONS ON SITE.
ALL RIGHTS RESERVED.
© QVE ARUP & PARTNERS HONG KONG LIMITED.



- LEGEND**
- PROPOSED TUNNEL
 - - - VISUAL ENVELOPE
 - 100 HEIGHT IN +MPD
 - LT1 VSR VIEWING POINT

VSRs at Tsing Lung Tau (TL)	
VSR-TL2	Residents of Bellagio and Ocean Pointe
VSR-TL13	Travellers in Sham Tseng Public Pier
VSRs at North Lantau (NL)	
VSR-NL8	Residents of Park Island

Rev	Description	By	Date
A	FIRST ISSUE	BS	06/22

Consultant
ARUP

Project title
Agreement No. CE 13/2021 (HY)
Route 11 (Section between Yuen Long and North Lantau) - Investigation.

Drawing title
VISUALLY SENSITIVE RECEIVERS – TSING LUNG TAU AND NORTH LANTAU

Drawing no. FIGURE 11.6.7		Rev. A	
Drawn RY	Date 10/21	Checked IL	Approved SK
Scale 1 : 5000 @A1		Status PRELIMINARY	

COPYRIGHT RESERVED

路政署
HIGHWAYS DEPARTMENT

FOR CONTINUATION
SEE FIGURE 11.6.6
MATCH LINE

