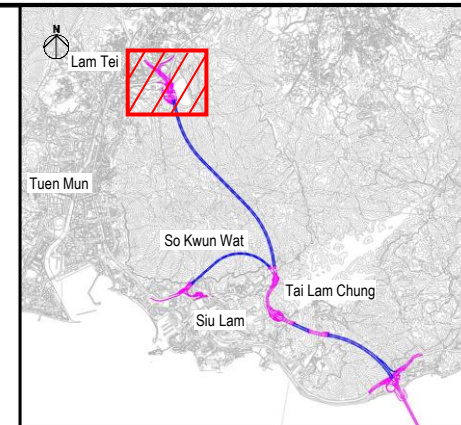
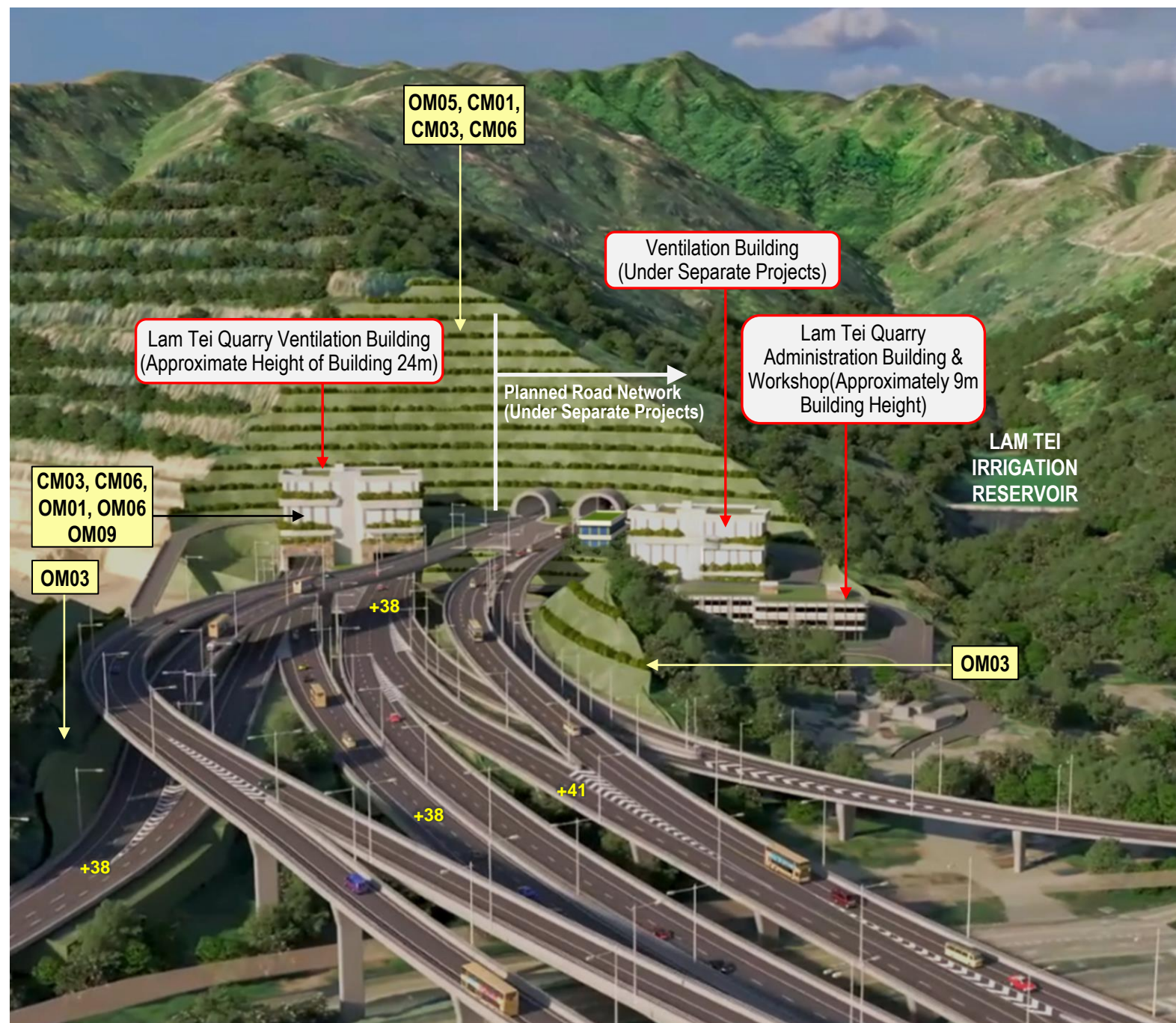


KEY PLAN

**MITIGATION MEASURES**

<b>CM01</b>	Tree Protection and Preservation
<b>CM02</b>	Tree Transplantation
<b>CM03</b>	Works Area and Temporary Works Areas
<b>CM04</b>	Advance Implementation of Mitigation Planting
<b>CM05</b>	Decorative Screen Hoarding
<b>CM06</b>	Control of night-time lighting
<b>OM01</b>	Integrated Design Approach
<b>OM02</b>	Roadside Buffer Planting / Roadside Planting
<b>OM03</b>	Compensatory Planting Proposals
<b>OM04</b>	Post-Planting Monitoring
<b>OM05</b>	Greening Works on Slopes and associated Structure
<b>OM06</b>	Design of Tunnel Portals and landscape treatment
<b>OM07</b>	Design of an Elegant Bridge Structure and Approach Roads
<b>OM08</b>	Provision of Visually Pleasing Aesthetic Treatment of Noise Mitigation Measures
<b>OM09</b>	Provision of Green Roof



KEY LAN

**LEGEND**



**NOTES:**

1. For the newly formed slopes works, whip and shrub planting will be applied on soil slopes with gradient of 35 degrees or less. For soil slopes with gradient of more than 35 degrees, grass hydroseeding with pit planting of shrubs, ground covers would be adopted on slope face.

D	REVISION	KL	8/23
C	REVISION	KL	7/23
B	REVISION	KL	6/23
A	FIRST ISSUE	KL	11/22
Rev	Description	By	Date

Consultant

**ARUP**

Project title  
 Agreement No. CE 13/2021 (HY)  
 Route 11 (Section between  
 Yuen Long and North Lantau)  
 - Investigation.

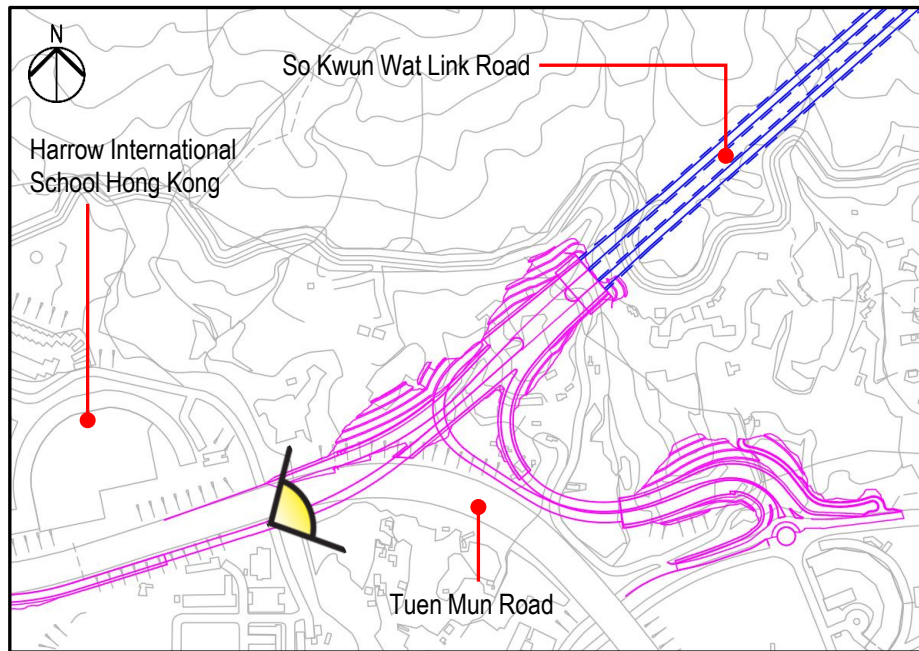
Drawing title  
**ARTISTIC IMPRESSION -  
 VENTILATION BUILDING IN  
 LAM TEI QUARRY**

Drawing no.		Rev.	
FIGURE 11.9.21		D	
Drawn	Date	Checked	Approved
RY	10/21	IL	SK
Scale	Status	PRELIMINARY	
AS SHOWN			

COPYRIGHT RESERVED

路政署  
**HIGHWAYS DEPARTMENT**

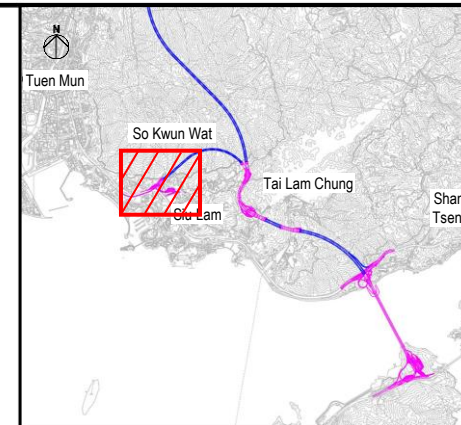
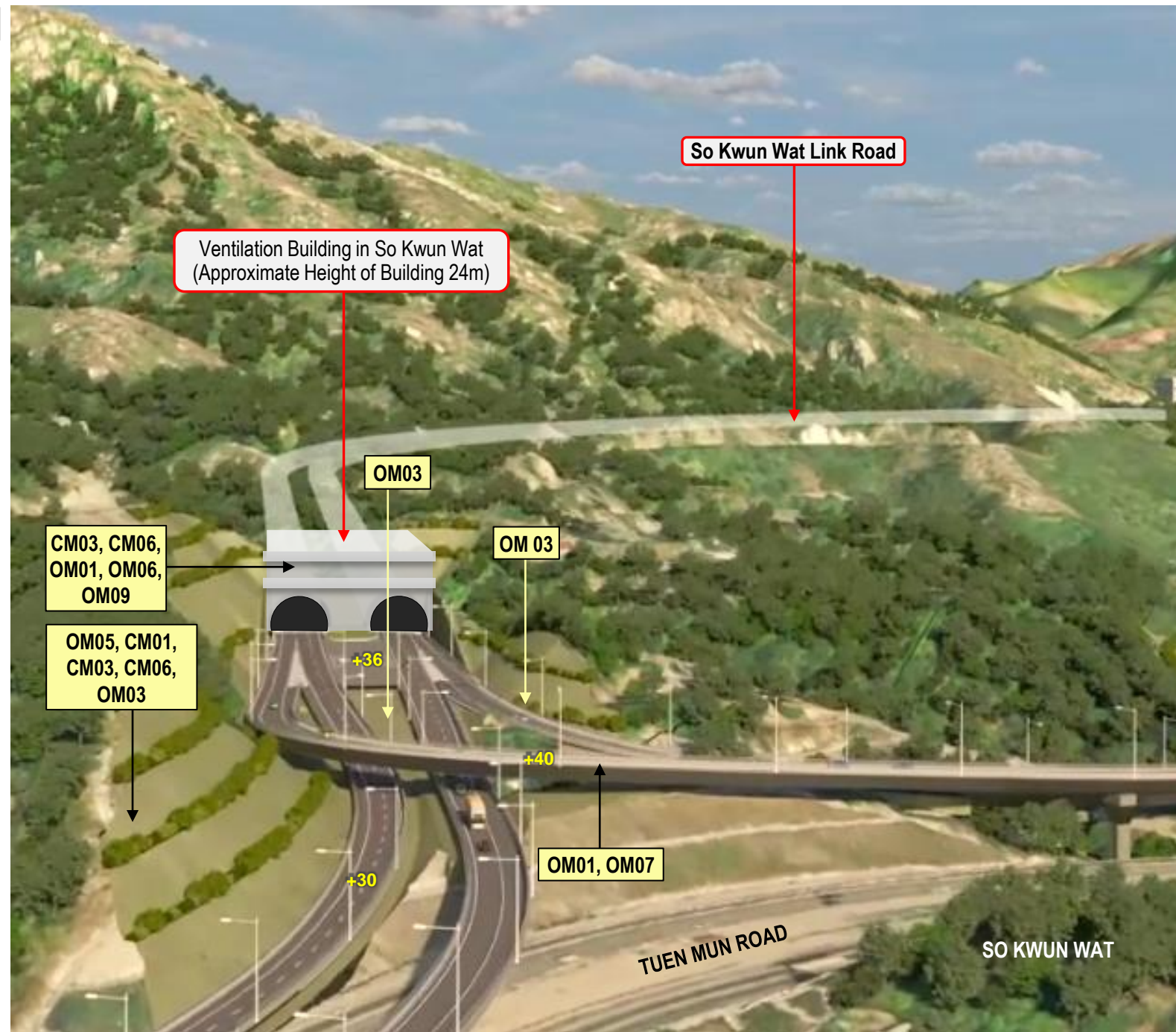




KEY PLAN

**MITIGATION MEASURES**

<b>CM01</b>	Tree Protection and Preservation
<b>CM02</b>	Tree Transplantation
<b>CM03</b>	Works Area and Temporary Works Areas
<b>CM04</b>	Advance Implementation of Mitigation Planting
<b>CM05</b>	Decorative Screen Hoarding
<b>CM06</b>	Control of night-time lighting
<b>OM01</b>	Integrated Design Approach
<b>OM02</b>	Roadside Buffer Planting / Roadside Planting
<b>OM03</b>	Compensatory Planting Proposals
<b>OM04</b>	Post-Planting Monitoring
<b>OM05</b>	Greening Works on Slopes and associated Structure
<b>OM06</b>	Design of Tunnel Portals and landscape treatment
<b>OM07</b>	Design of an Elegant Bridge Structure and Approach Roads
<b>OM08</b>	Provision of Visually Pleasing Aesthetic Treatment of Noise Mitigation Measures
<b>OM09</b>	Provision of Green Roof



KEY PLAN

**LEGEND**



**NOTES:**

1. For the newly formed slopes works, whip and shrub planting will be applied on soil slopes with gradient of 35 degrees or less. For soil slopes with gradient of more than 35 degrees, grass hydroseeding with pit planting of shrubs, ground covers would be adopted on slope face.

Rev	Description	By	Date
C	REVISION	KL	8/23
B	REVISION	KL	6/23
A	FIRST ISSUE	KL	11/22

Consultant

**ARUP**

Project title  
Agreement No. CE 13/2021 (HY)  
Route 11 (Section between Yuen Long and North Lantau)  
- Investigation.

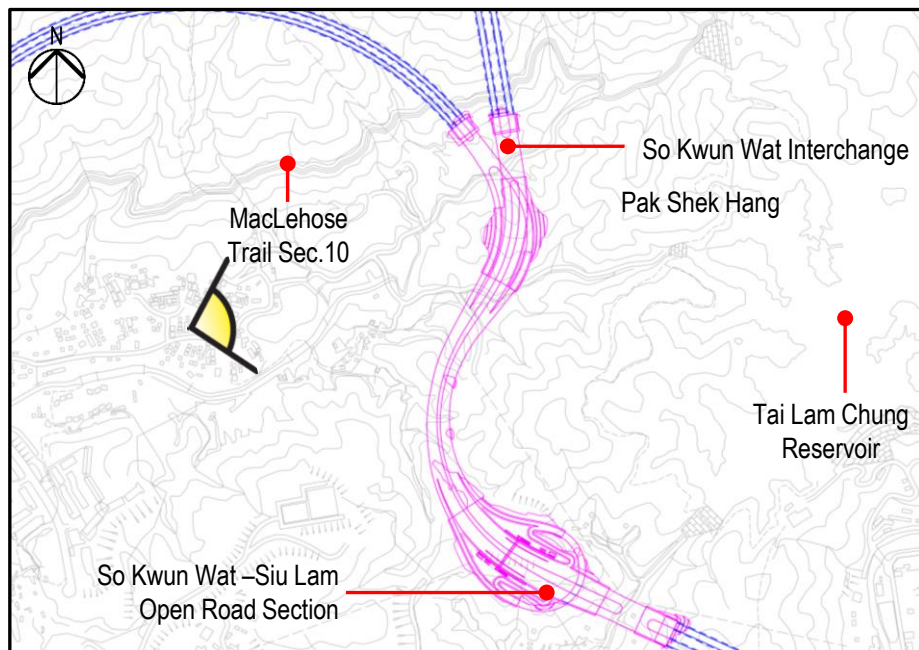
Drawing title  
**ARTISTIC IMPRESSION -  
VENTILATION BUILDING IN  
SO KWUN WAT**

Drawing no. <b>FIGURE 11.9.22</b>		Rev. <b>C</b>	
Drawn RY	Date 10/21	Checked IL	Approved SK
Scale AS SHOWN		Status PRELIMINARY	

COPYRIGHT RESERVED

 路政署  
**HIGHWAYS DEPARTMENT**

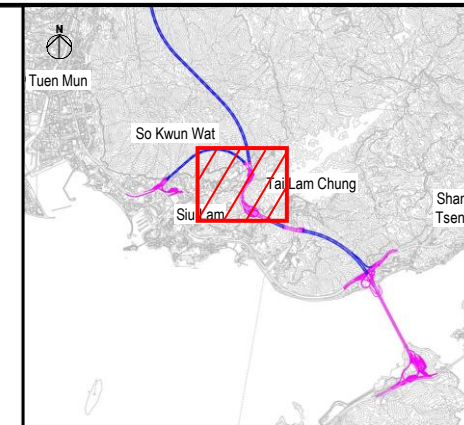
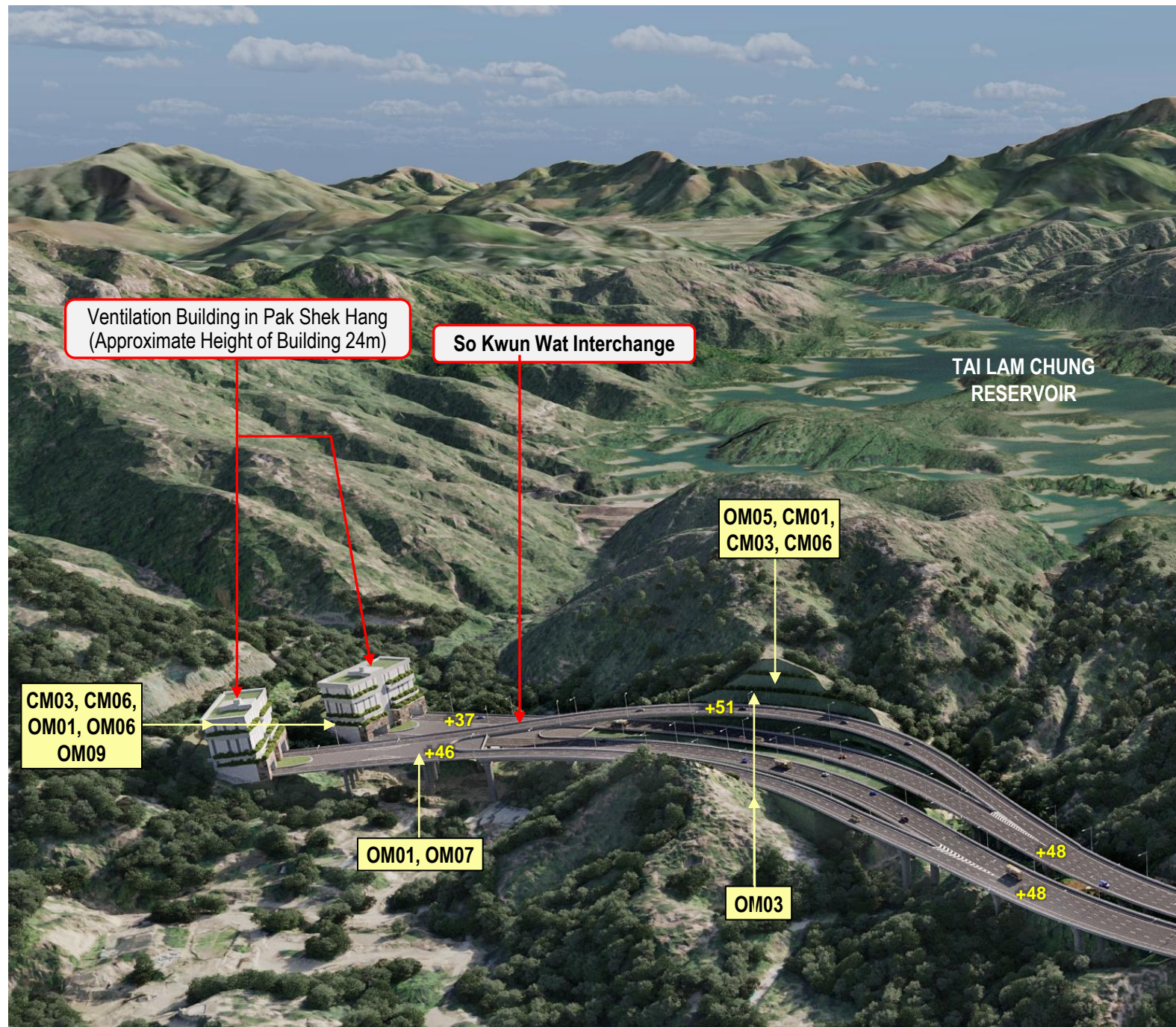




KEY PLAN

**MITIGATION MEASURES**

<b>CM01</b>	Tree Protection and Preservation
<b>CM02</b>	Tree Transplantation
<b>CM03</b>	Works Area and Temporary Works Areas
<b>CM04</b>	Advance Implementation of Mitigation Planting
<b>CM05</b>	Decorative Screen Hoarding
<b>CM06</b>	Control of night-time lighting
<b>OM01</b>	Integrated Design Approach
<b>OM02</b>	Roadside Buffer Planting / Roadside Planting
<b>OM03</b>	Compensatory Planting Proposals
<b>OM04</b>	Post-Planting Monitoring
<b>OM05</b>	Greening Works on Slopes and associated Structure
<b>OM06</b>	Design of Tunnel Portals and landscape treatment
<b>OM07</b>	Design of an Elegant Bridge Structure and Approach Roads
<b>OM08</b>	Provision of Visually Pleasing Aesthetic Treatment of Noise Mitigation Measures
<b>OM09</b>	Provision of Green Roof



KEY LAN

**LEGEND**



**NOTES:**

1. For the newly formed slopes works, whip and shrub planting will be applied on soil slopes with gradient of 35 degrees or less. For soil slopes with gradient of more than 35 degrees, grass hydroseeding with pit planting of shrubs, ground covers would be adopted on slope face.

Rev	Description	By	Date
C	REVISION	KL	8/23
B	REVISION	KL	6/23
A	FIRST ISSUE	KL	11/22



Project title  
 Agreement No. CE 13/2021 (HY)  
 Route 11 (Section between Yuen Long and North Lantau)  
 - Investigation.

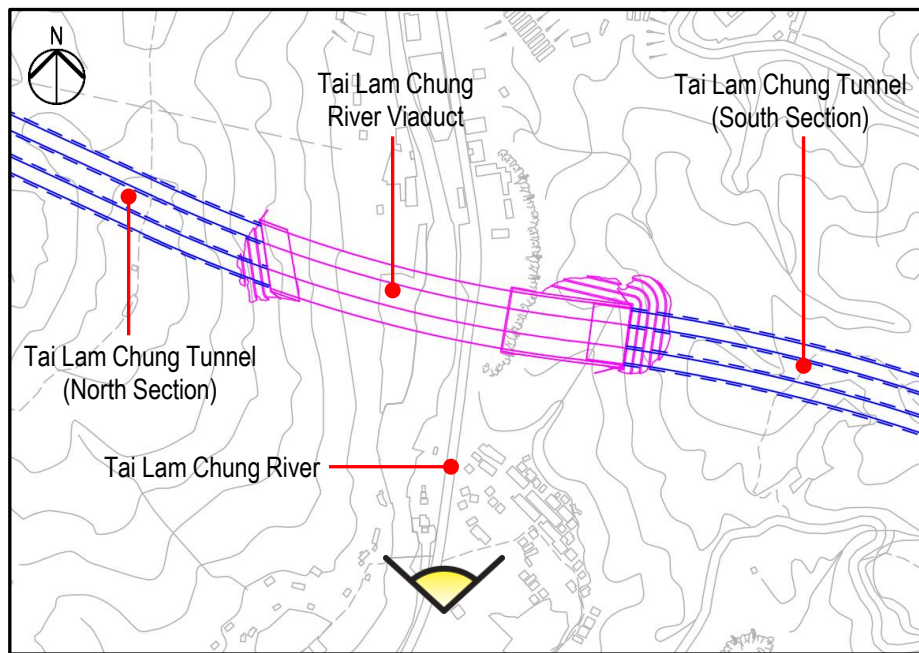
Drawing title  
**ARTISTIC IMPRESSION -  
 VENTILATION BUILDING IN  
 PAK SHEK HANG**

Drawing no. <b>FIGURE 11.9.23</b>		Rev. <b>C</b>	
Drawn RY	Date 10/21	Checked IL	Approved SK
Scale AS SHOWN		Status PRELIMINARY	

COPYRIGHT RESERVED



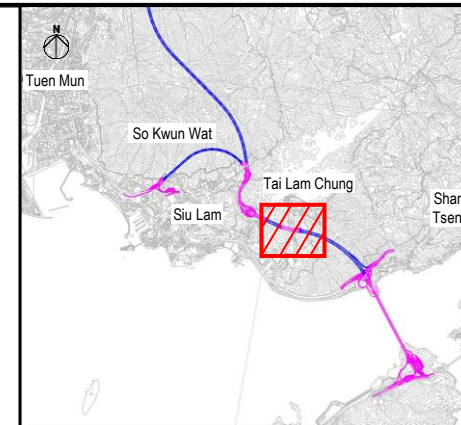
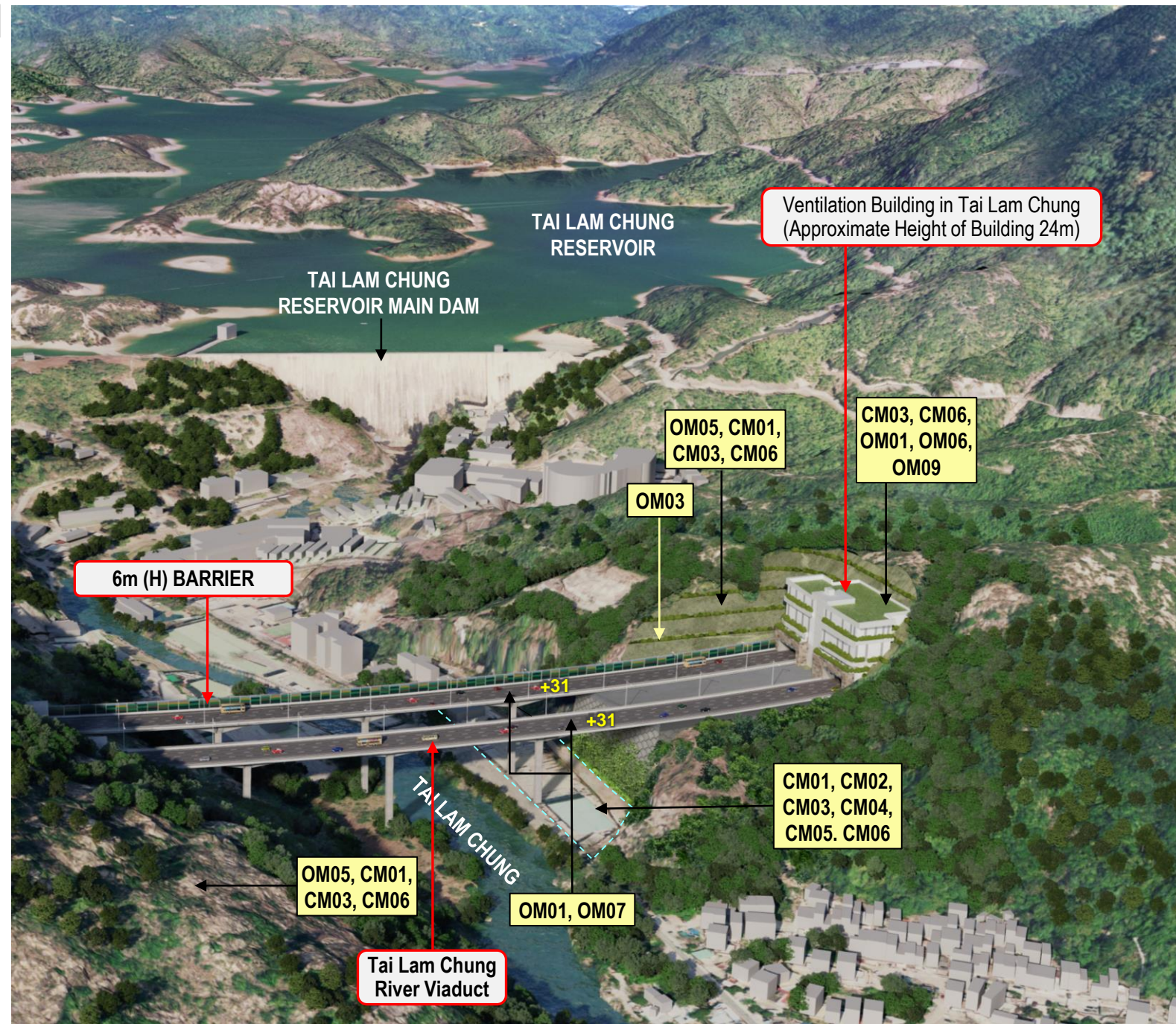




KEY PLAN

**MITIGATION MEASURES**

<b>CM01</b>	Tree Protection and Preservation
<b>CM02</b>	Tree Transplantation
<b>CM03</b>	Works Area and Temporary Works Areas
<b>CM04</b>	Advance Implementation of Mitigation Planting
<b>CM05</b>	Decorative Screen Hoarding
<b>CM06</b>	Control of night-time lighting
<b>OM01</b>	Integrated Design Approach
<b>OM02</b>	Roadside Buffer Planting / Roadside Planting
<b>OM03</b>	Compensatory Planting Proposals
<b>OM04</b>	Post-Planting Monitoring
<b>OM05</b>	Greening Works on Slopes and associated Structure
<b>OM06</b>	Design of Tunnel Portals and landscape treatment
<b>OM07</b>	Design of an Elegant Bridge Structure and Approach Roads
<b>OM08</b>	Provision of Visually Pleasing Aesthetic Treatment of Noise Mitigation Measures
<b>OM09</b>	Provision of Green Roof



KEY LAN

**LEGEND**

- VIEWING ANGLE
- PROPOSED TEMPORARY WORKS AREA

**NOTES:**

1. For the newly formed slopes works, whip and shrub planting will be applied on soil slopes with gradient of 35 degrees or less. For soil slopes with gradient of more than 35 degrees, grass hydroseeding with pit planting of shrubs, ground covers would be adopted on slope face.

Rev	Description	By	Date
C	REVISION	KL	8/23
B	REVISION	KL	6/23
A	FIRST ISSUE	KL	11/22

Consultant  
**ARUP**

Project title  
Agreement No. CE 13/2021 (HY)  
Route 11 (Section between Yuen Long and North Lantau)  
- Investigation.

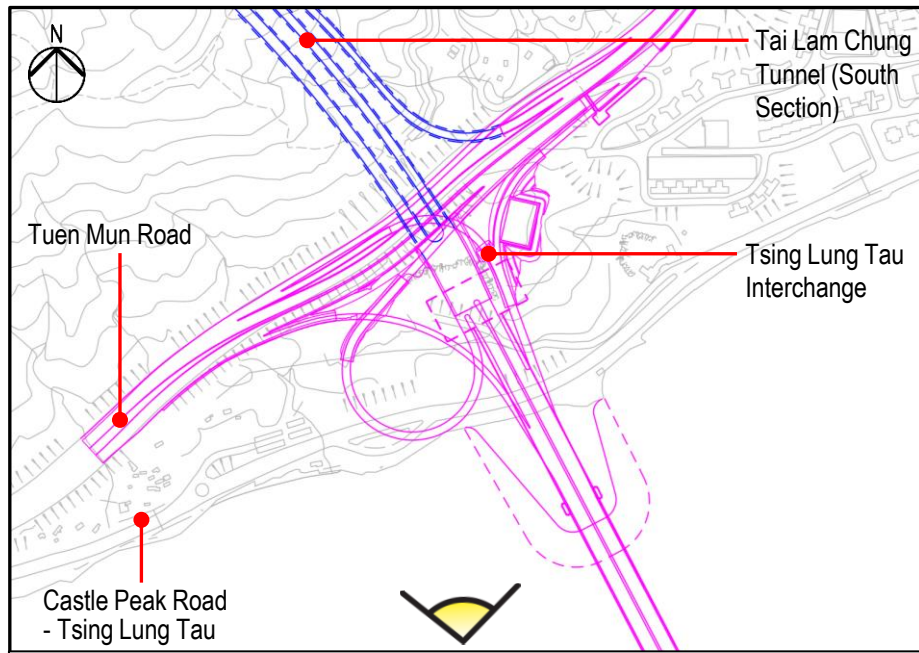
Drawing title  
**ARTISTIC IMPRESSION -  
VENTILATION BUILDING IN  
TAI LAM CHUNG**

Drawing no. <b>FIGURE 11.9.24</b>		Rev. <b>C</b>	
Drawn RY	Date 10/21	Checked IL	Approved SK
Scale AS SHOWN		Status PRELIMINARY	

COPYRIGHT RESERVED

路政署  
**HIGHWAYS DEPARTMENT**

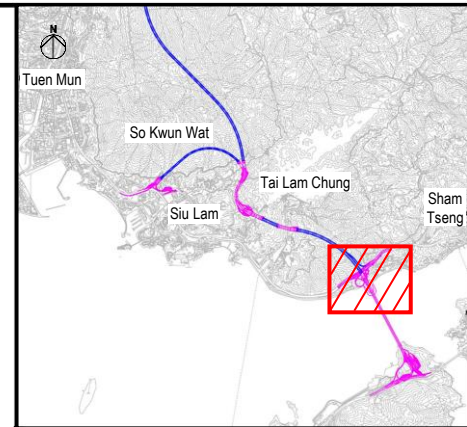
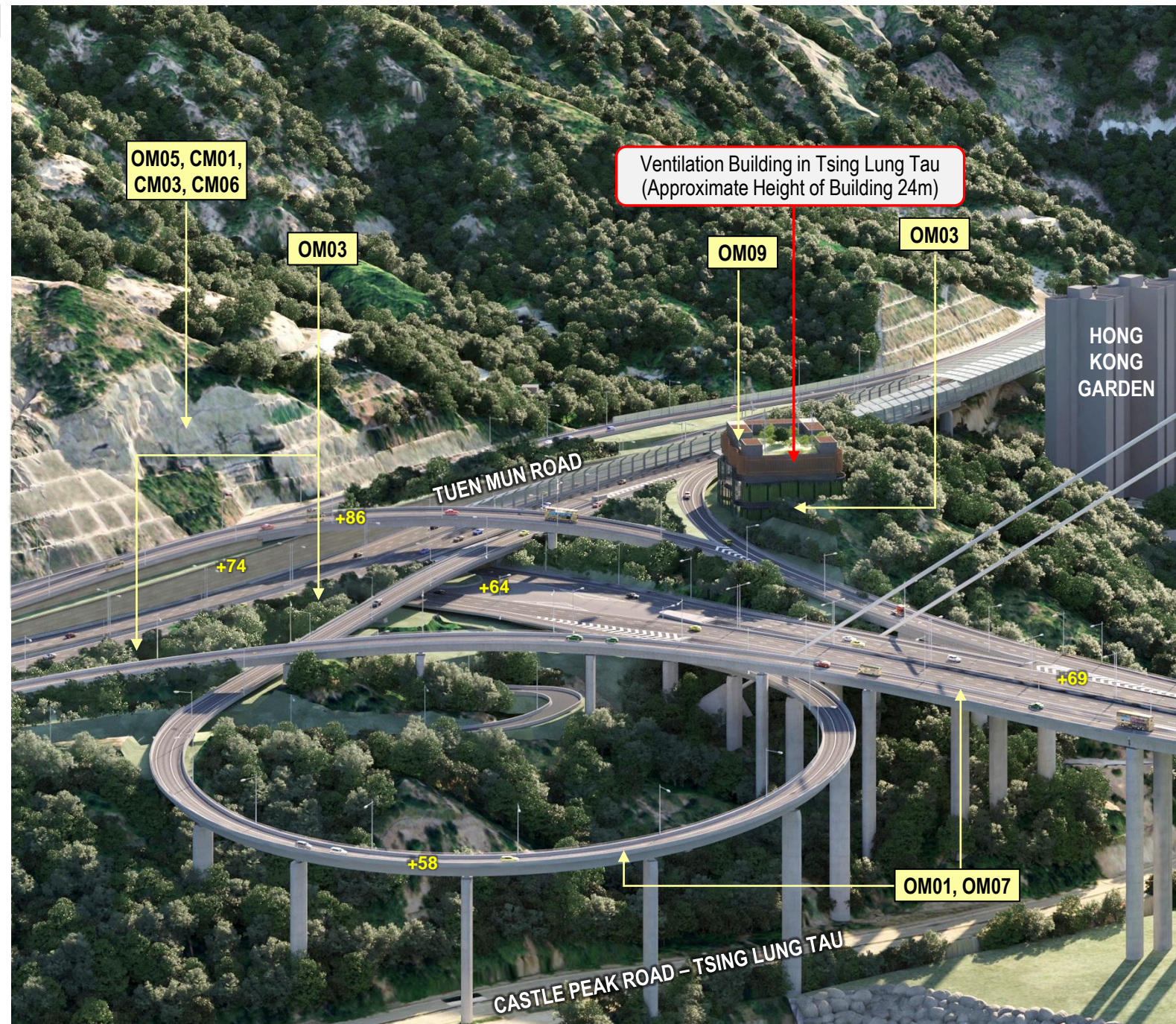




KEY PLAN

MITIGATION MEASURES

CM01	Tree Protection and Preservation
CM02	Tree Transplantation
CM03	Works Area and Temporary Works Areas
CM04	Advance Implementation of Mitigation Planting
CM05	Decorative Screen Hoarding
CM06	Control of night-time lighting
OM01	Integrated Design Approach
OM02	Roadside Buffer Planting / Roadside Planting
OM03	Compensatory Planting Proposals
OM04	Post-Planting Monitoring
OM05	Greening Works on Slopes and associated Structure
OM06	Design of Tunnel Portals and landscape treatment
OM07	Design of an Elegant Bridge Structure and Approach Roads
OM08	Provision of Visually Pleasing Aesthetic Treatment of Noise Mitigation Measures
OM09	Provision of Green Roof



KEY LAN

LEGEND



NOTES:

1. For the newly formed slopes works, whip and shrub planting will be applied on soil slopes with gradient of 35 degrees or less. For soil slopes with gradient of more than 35 degrees, grass hydroseeding with pit planting of shrubs, ground covers would be adopted on slope face.

Rev	Description	By	Date
C	REVISION	KL	8/23
B	REVISION	KL	6/23
A	FIRST ISSUE	KL	11/22



Project title  
 Agreement No. CE 13/2021 (HY)  
 Route 11 (Section between Yuen Long and North Lantau)  
 - Investigation.

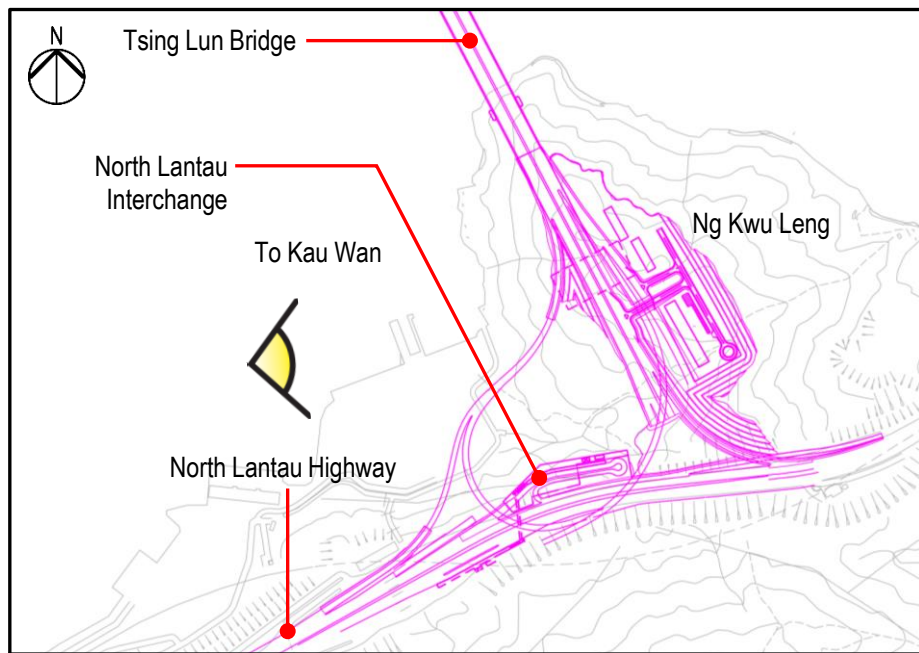
Drawing title  
**ARTISTIC IMPRESSION -  
 VENTILATION BUILDING IN  
 TSING LUNG TAU**

Drawing no. <b>FIGURE 11.9.25</b>		Rev. <b>C</b>	
Drawn RY	Date 10/21	Checked IL	Approved SK
Scale AS SHOWN		Status PRELIMINARY	

COPYRIGHT RESERVED



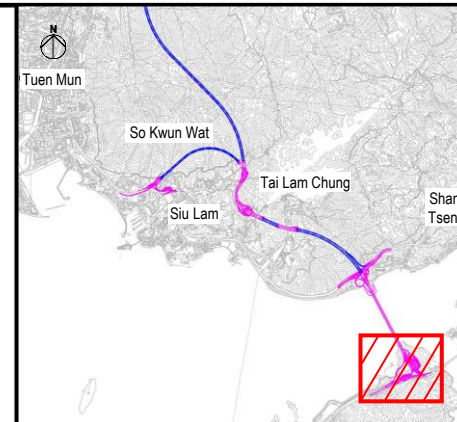
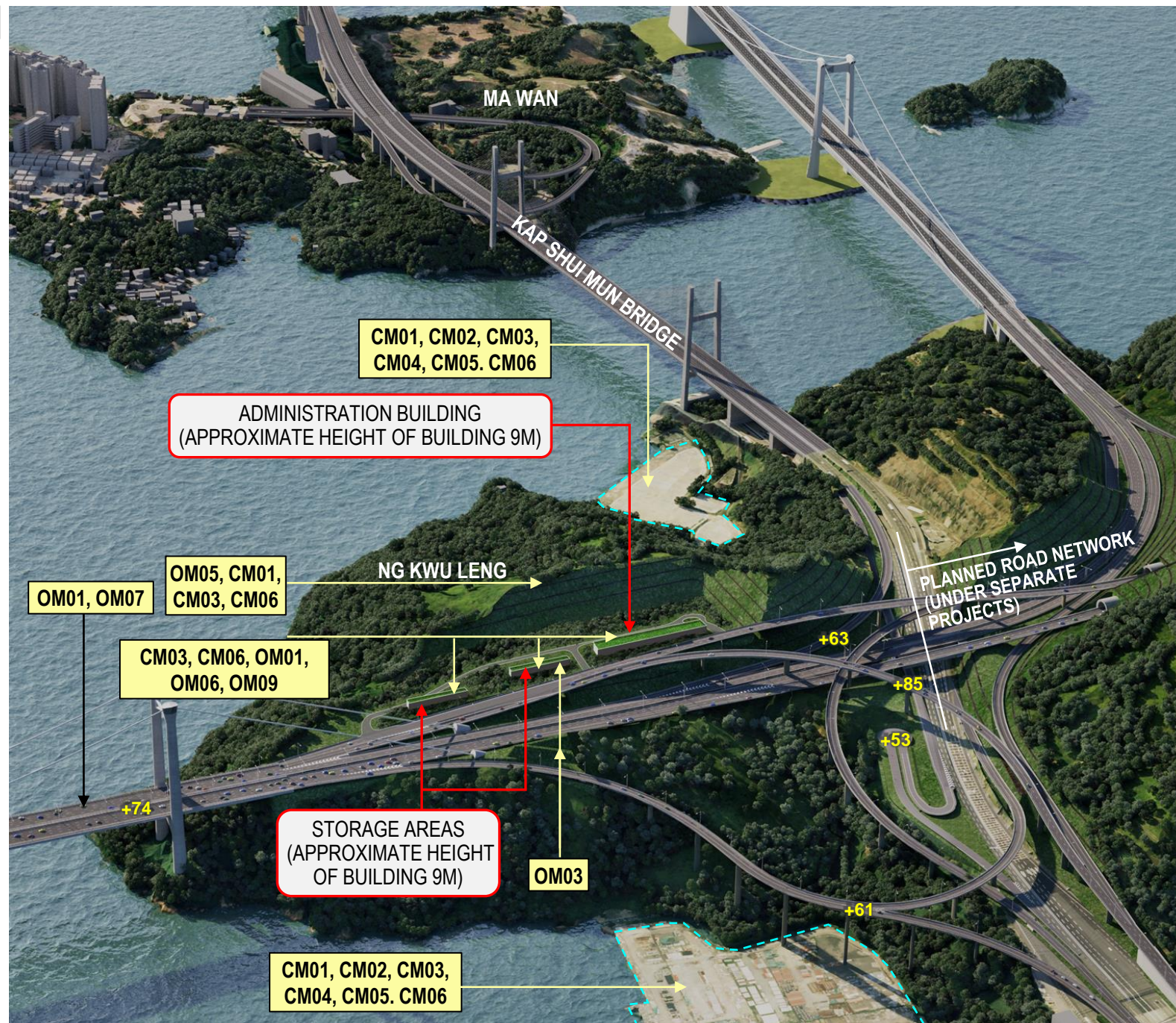




KEY PLAN

**MITIGATION MEASURES**

<b>CM01</b>	Tree Protection and Preservation
<b>CM02</b>	Tree Transplantation
<b>CM03</b>	Works Area and Temporary Works Areas
<b>CM04</b>	Advance Implementation of Mitigation Planting
<b>CM05</b>	Decorative Screen Hoarding
<b>CM06</b>	Control of night-time lighting
<b>OM01</b>	Integrated Design Approach
<b>OM02</b>	Roadside Buffer Planting / Roadside Planting
<b>OM03</b>	Compensatory Planting Proposals
<b>OM04</b>	Post-Planting Monitoring
<b>OM05</b>	Greening Works on Slopes and associated Structure
<b>OM06</b>	Design of Tunnel Portals and landscape treatment
<b>OM07</b>	Design of an Elegant Bridge Structure and Approach Roads
<b>OM08</b>	Provision of Visually Pleasing Aesthetic Treatment of Noise Mitigation Measures
<b>OM09</b>	Provision of Green Roof



KEY LAN

**LEGEND**

- VIEWING ANGLE
- PROPOSED TEMPORARY WORKS AREA

**NOTES:**

1. For the newly formed slopes works, whip and shrub planting will be applied on soil slopes with gradient of 35 degrees or less. For soil slopes with gradient of more than 35 degrees, grass hydroseeding with pit planting of shrubs, ground covers would be adopted on slope face.

Rev	Description	By	Date
E	REVISION	KL	9/23
D	REVISION	KL	8/23
C	REVISION	KL	7/23
B	REVISION	KL	6/23



Project title  
Agreement No. CE 13/2021 (HY)  
Route 11 (Section between Yuen Long and North Lantau)  
- Investigation.

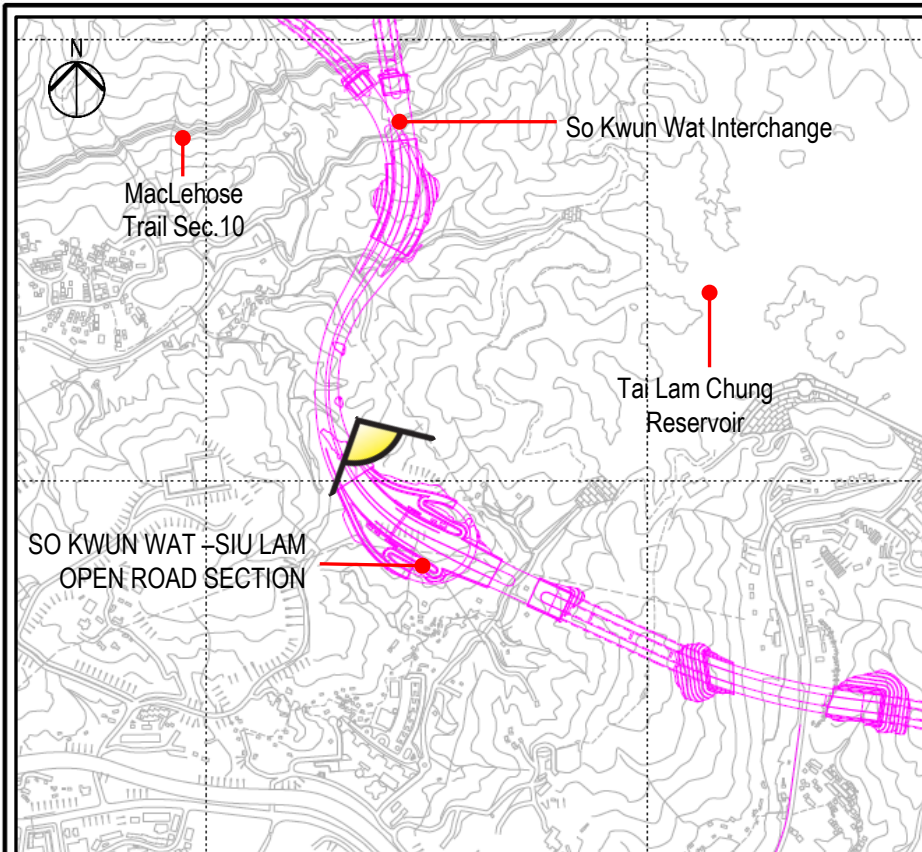
Drawing title  
**ARTISTIC IMPRESSION -  
VENTILATION BUILDING IN  
NORTH LANTAU INTERCHANGE**

Drawing no. <b>FIGURE 11.9.26</b>		Rev. <b>E</b>	
Drawn RY	Date 10/21	Checked IL	Approved SK
Scale AS SHOWN		Status PRELIMINARY	

COPYRIGHT RESERVED



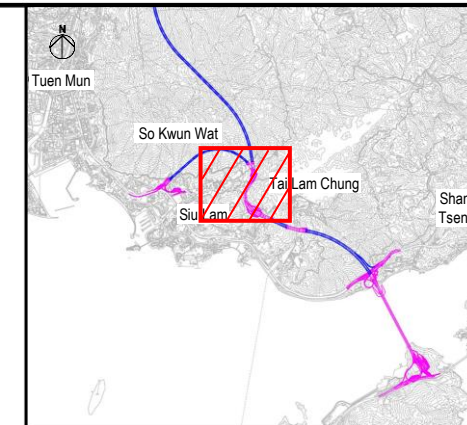
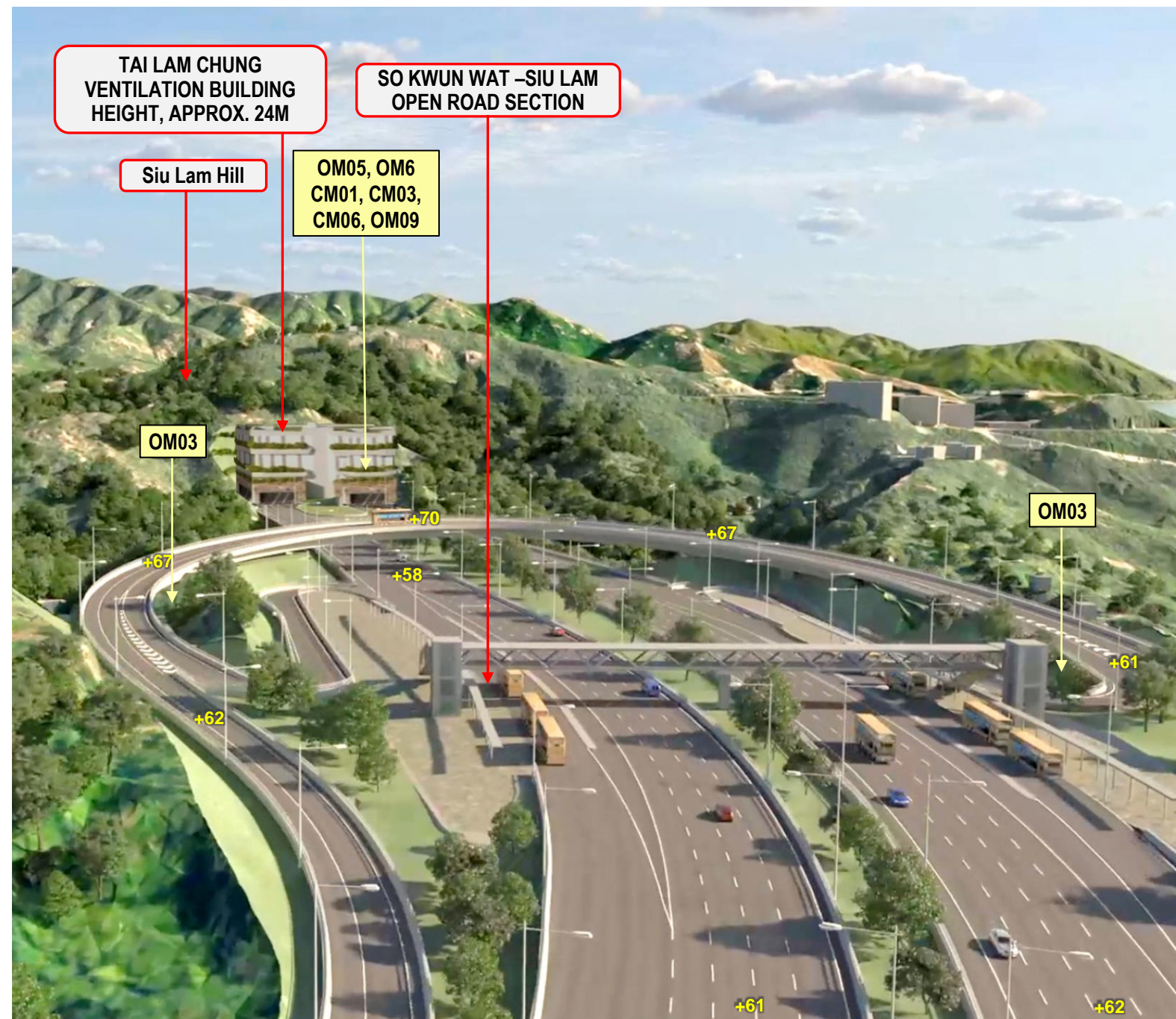




KEY PLAN

**MITIGATION MEASURES**

CM01	Tree Protection and Preservation
CM02	Tree Transplantation
CM03	Works Area and Temporary Works Areas
CM04	Advance Implementation of Mitigation Planting
CM05	Decorative Screen Hoarding
CM06	Control of night-time lighting
OM01	Integrated Design Approach
OM02	Roadside Buffer Planting / Roadside Planting
OM03	Compensatory Planting Proposals
OM04	Post-Planting Monitoring
OM05	Greening Works on Slopes and associated Structure
OM06	Design of Tunnel Portals and landscape treatment
OM07	Design of an Elegant Bridge Structure and Approach Roads
OM08	Provision of Visually Pleasing Aesthetic Treatment of Noise Mitigation Measures
OM09	Provision of Green Roof



KEY LAN

**LEGEND**



**NOTES:**  
 1. For the newly formed slopes works, whip and shrub planting will be applied on soil slopes with gradient of 35 degrees or less. For soil slopes with gradient of more than 35 degrees, grass hydroseeding with pit planting of shrubs, ground covers would be adopted on slope face.

C	REVISION	KL	8/23
B	REVISION	KL	6/23
A	FIRST ISSUE	KL	6/23
Rev	Description	By	Date

Consultant  
**ARUP**

Project title  
 Agreement No. CE 13/2021 (HY)  
 Route 11 (Section between Yuen Long and North Lantau)  
 - Investigation.

Drawing title  
**ARTISTIC IMPRESSION - SO KWUN WAT INTERCHANGE**

Drawing no. FIGURE 11.9.27		Rev. C	
Drawn RY	Date 10/21	Checked IL	Approved SK
Scale AS SHOWN		Status PRELIMINARY	