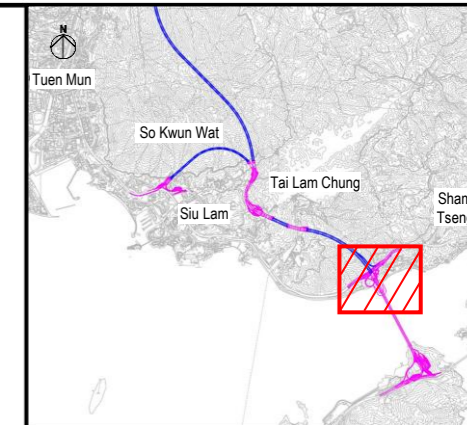
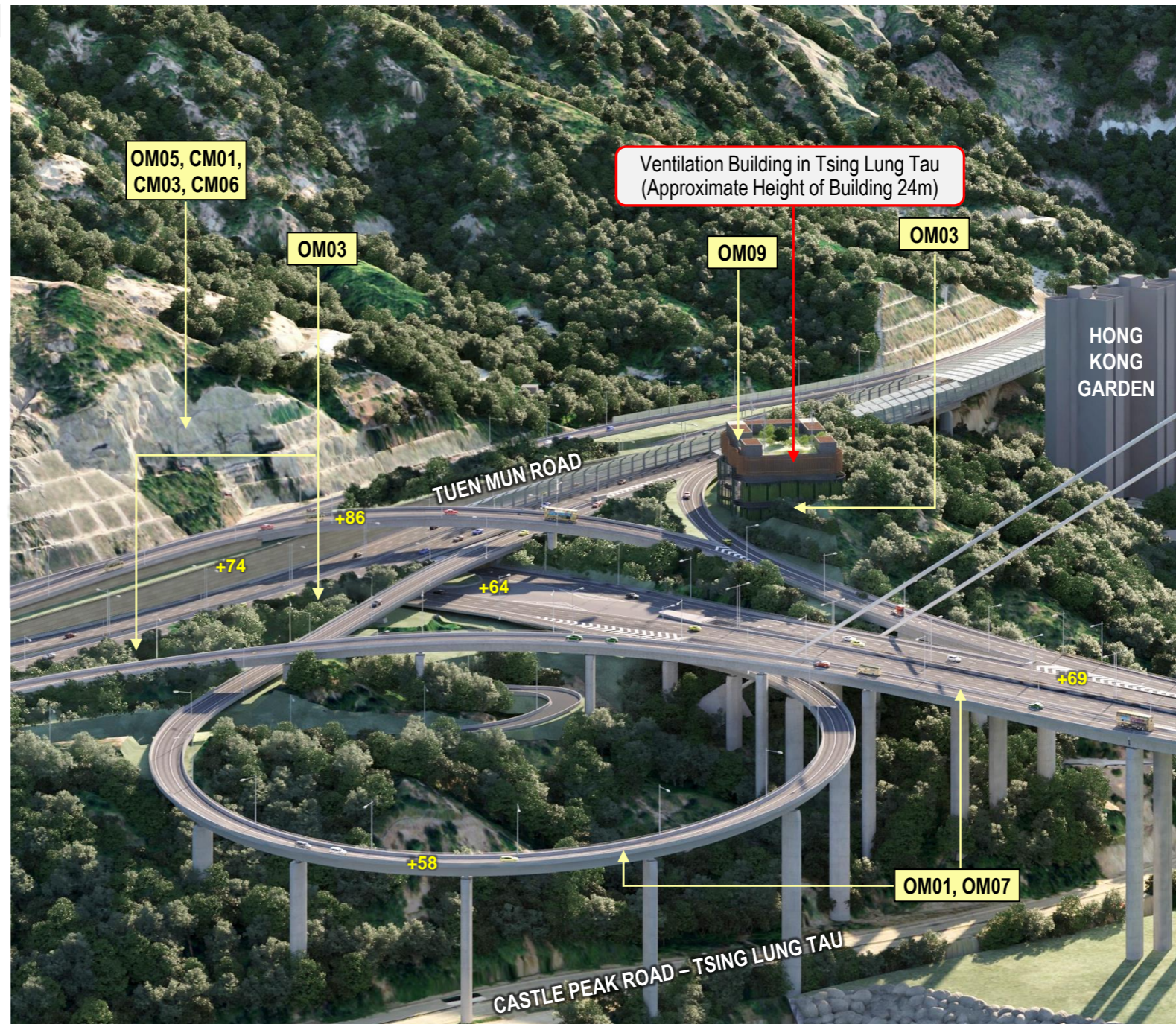


KEY PLAN

**MITIGATION MEASURES**

<b>CM01</b>	Tree Protection and Preservation
<b>CM02</b>	Tree Transplantation
<b>CM03</b>	Works Area and Temporary Works Areas
<b>CM04</b>	Advance Implementation of Mitigation Planting
<b>CM05</b>	Decorative Screen Hoarding
<b>CM06</b>	Control of night-time lighting
<b>OM01</b>	Integrated Design Approach
<b>OM02</b>	Roadside Buffer Planting / Roadside Planting
<b>OM03</b>	Compensatory Planting Proposals
<b>OM04</b>	Post-Planting Monitoring
<b>OM05</b>	Greening Works on Slopes and associated Structure
<b>OM06</b>	Design of Tunnel Portals and landscape treatment
<b>OM07</b>	Design of an Elegant Bridge Structure and Approach Roads
<b>OM08</b>	Provision of Visually Pleasing Aesthetic Treatment of Noise Mitigation Measures
<b>OM09</b>	Provision of Green Roof



KEY LAN

**LEGEND**



**NOTES:**

1. For the newly formed slopes works, whip and shrub planting will be applied on soil slopes with gradient of 35 degrees or less. For soil slopes with gradient of more than 35 degrees, grass hydroseeding with pit planting of shrubs, ground covers would be adopted on slope face.

Rev	Description	By	Date
C	REVISION	KL	8/23
B	REVISION	KL	6/23
A	FIRST ISSUE	KL	11/22



Project title  
 Agreement No. CE 13/2021 (HY)  
 Route 11 (Section between Yuen Long and North Lantau)  
 - Investigation.

Drawing title  
**ARTISTIC IMPRESSION -  
 VENTILATION BUILDING IN  
 TSING LUNG TAU**

Drawing no. <b>FIGURE 11.9.25</b>		Rev. <b>C</b>	
Drawn RY	Date 10/21	Checked IL	Approved SK
Scale AS SHOWN		Status PRELIMINARY	

COPYRIGHT RESERVED

