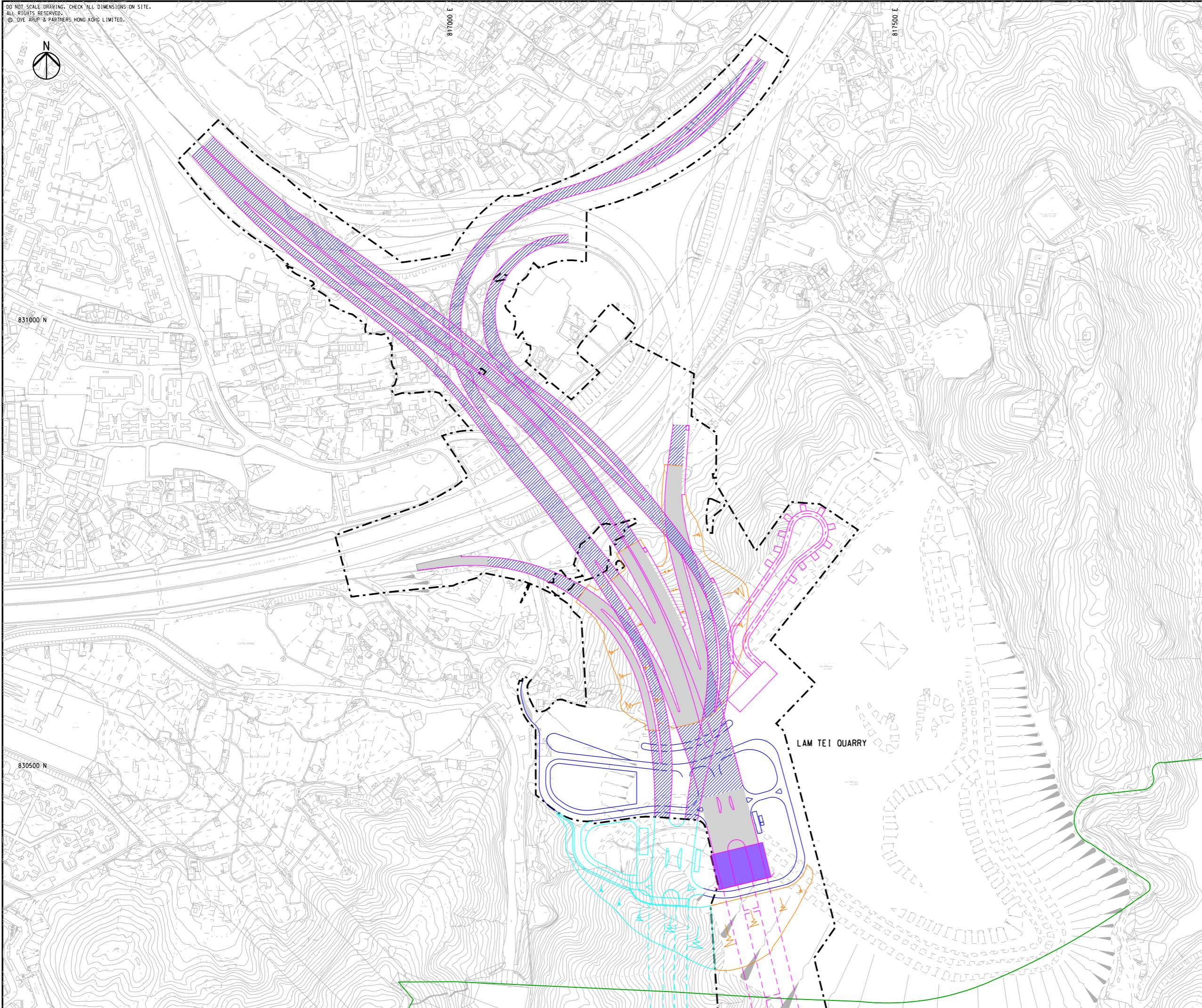


DO NOT SCALE DRAWING. CHECK ALL DIMENSIONS ON SITE.  
 ALL RIGHTS RESERVED.  
 © OVE ARUP & PARTNERS HONG KONG LIMITED.



- LEGEND**
- PROPOSED LIMIT OF WORKS
  - PROPOSED ROUTE 11
  - TAI LAM COUNTRY PARK
  - PROPOSED SLOPE WORK
  - PROPOSED ADMINISTRATION BUILDING AND OPERATION AND MAINTENANCE AREA
  - PROPOSED ELEVATED ROAD / VIADUCT
  - PROPOSED AT-GRADE ROAD
  - PROPOSED TUNNEL
  - PROPOSED FOOTBRIDGE
  - PROPOSED VENTILATION BUILDING
  - PROPOSED TUEN MUN BYPASS (UNDER SEPARATE PROJECT)
  - PROPOSED TSING YI - LANTAU LINK (UNDER SEPARATE PROJECT)
  - PROPOSED HONG KONG ISLAND - NORTHEAST LANTAU LINK (UNDER SEPARATE PROJECT)
  - PROPOSED ROAD P1 (UNDER SEPARATE PROJECT)

Rev	Description	By	Date
B	SECOND ISSUE	EF	07/23
A	FIRST ISSUE	EF	05/23

Consultant  
**ARUP**

Project title  
 Agreement No. CE 13/2021 (HY)  
 Route 11 (Section between  
 Yuen Long and North Lantau)  
 - Investigation

Drawing title  
**CONSTRUCTION METHOD  
 - SHEET 1**

Drawing no. <b>FIGURE 2.6a</b>		Rev. <b>B</b>	
Drawn RY	Date 02/23	Checked IL	Approved SK
Scale 1:4000 @ A3		Status <b>PRELIMINARY</b>	

COPYRIGHT RESERVED

路政署  
 HIGHWAYS DEPARTMENT

DO NOT SCALE DRAWING. CHECK ALL DIMENSIONS ON SITE.  
 ALL RIGHTS RESERVED.  
 © OVE ARUP & PARTNERS HONG KONG LIMITED



827000 N

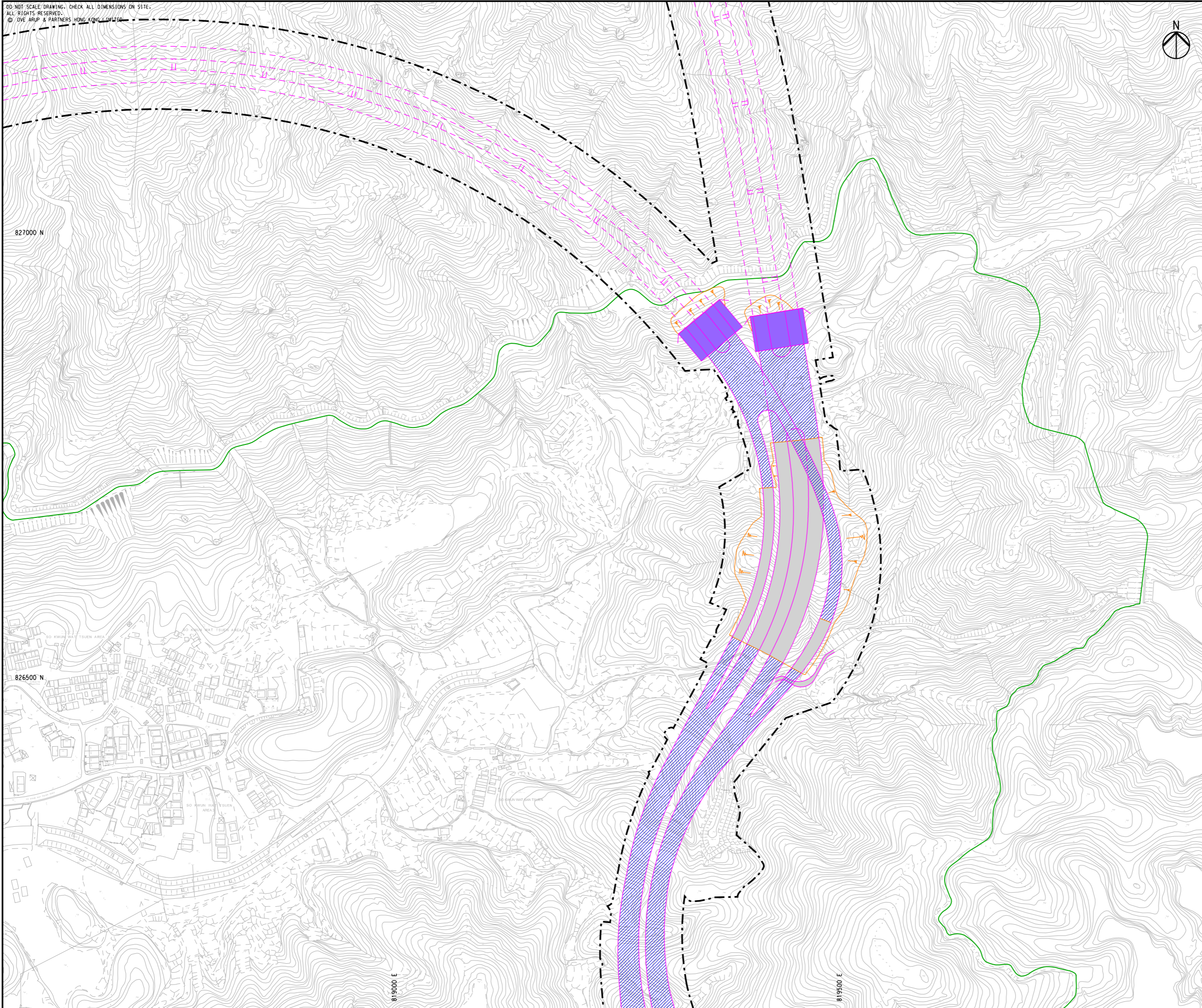
826500 N

819000 E

819500 E

**NOTES**

1. FOR NOTES AND LEGEND, REFER TO FIGURE 2.7a.



A	FIRST ISSUE	EF	05/23

Rev	Description	By	Date

Consultant  
**ARUP**

Project title  
 Agreement No. CE 13/2021 (HY)  
 Route 11 (Section between  
 Yuen Long and North Lantau)  
 - Investigation

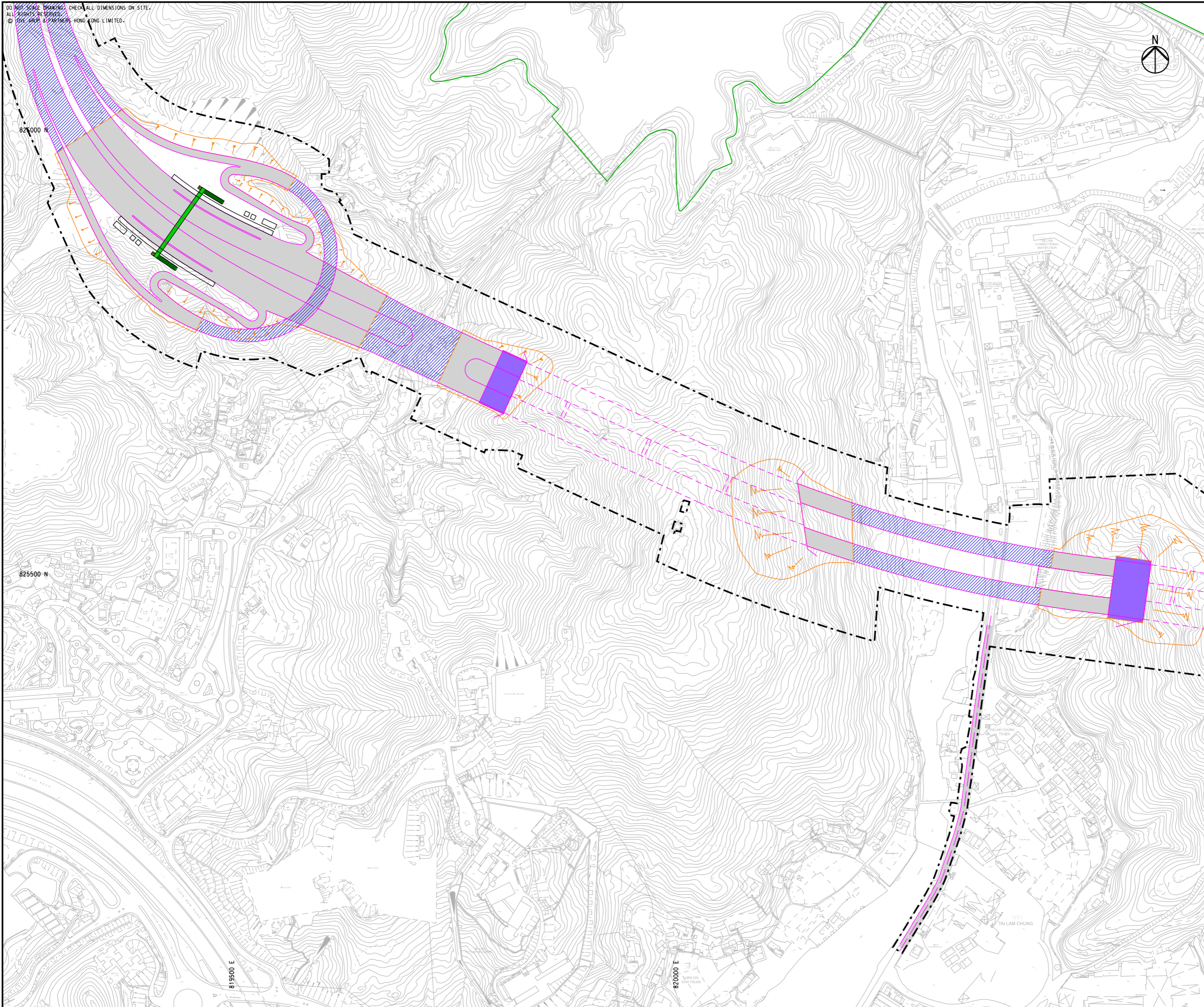
Drawing title  
**CONSTRUCTION METHOD  
 - SHEET 2**

Drawing no. <b>FIGURE 2.6b</b>		Rev. <b>A</b>	
Drawn RY	Date 04/23	Checked IL	Approved SK
Scale 1:4000 @ A3		Status <b>PRELIMINARY</b>	

COPYRIGHT RESERVED



DO NOT SCALE DRAWING. CHECK ALL DIMENSIONS ON SITE.  
 ALL RIGHTS RESERVED.  
 © 2023 ARUP & PARTNERS HONG KONG LIMITED.



**NOTES**

1. FOR NOTES AND LEGEND, REFER TO FIGURE 2.7a.


A	FIRST ISSUE	EF	05/23
Rev	Description	By	Date

Consultant  
**ARUP**

Project title  
 Agreement No. CE 13/2021 (HY)  
 Route 11 (Section between  
 Yuen Long and North Lantau)  
 - Investigation

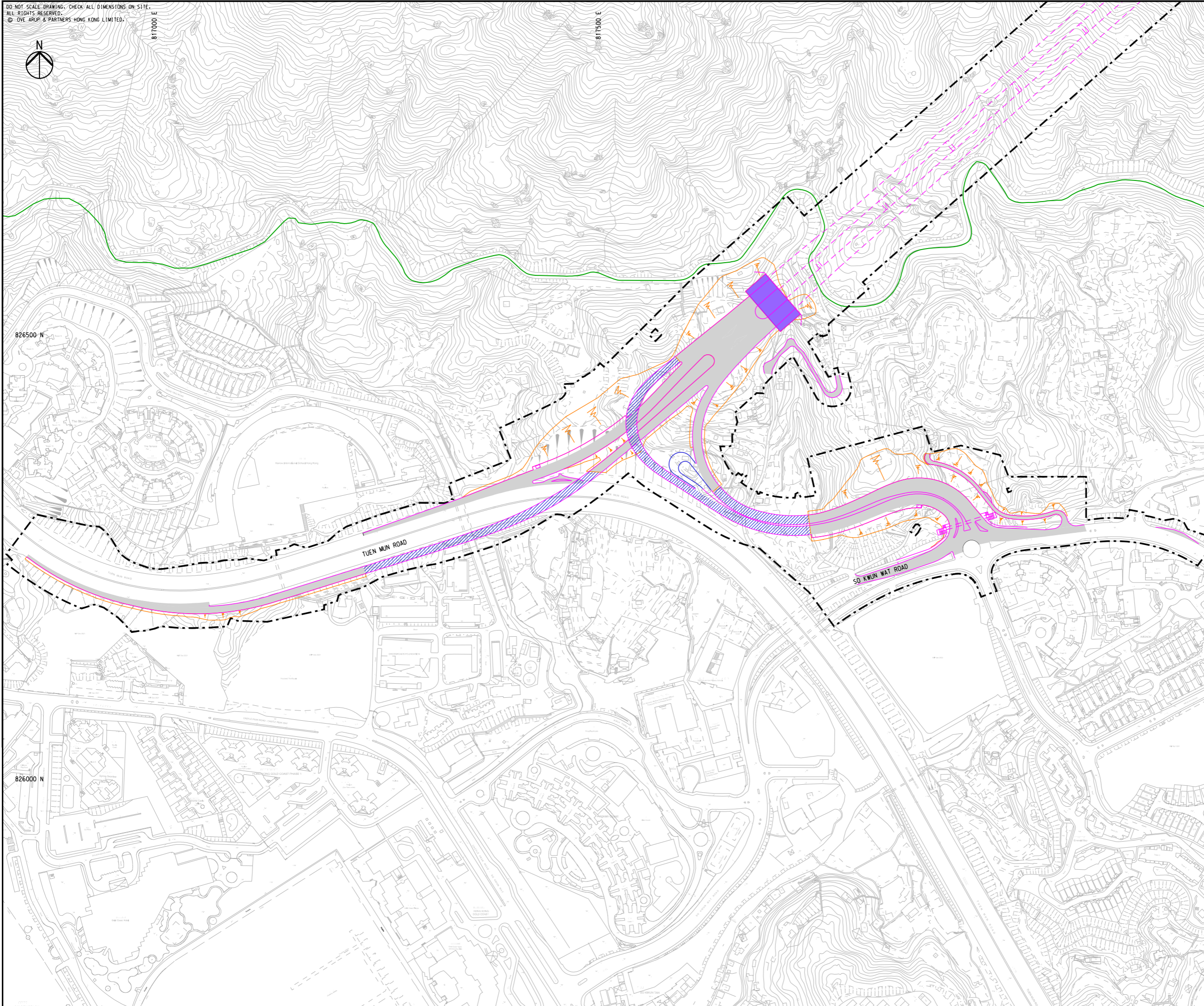
Drawing title  
**CONSTRUCTION METHOD  
 - SHEET 3**

Drawing no. <b>FIGURE 2.6c</b>		Rev. <b>A</b>	
Drawn RY	Date 04/23	Checked IL	Approved SK
Scale 1:4000 @ A3		Status <b>PRELIMINARY</b>	

COPYRIGHT RESERVED



DO NOT SCALE DRAWING. CHECK ALL DIMENSIONS ON SITE.  
 ALL RIGHTS RESERVED.  
 © OVE ARUP & PARTNERS HONG KONG LIMITED.



**NOTES**

1. FOR NOTES AND LEGEND, REFER TO FIGURE 2.7a.

A	FIRST ISSUE	EF	05/23

Rev	Description	By	Date

Consultant

**ARUP**

Project title  
 Agreement No. CE 13/2021 (HY)  
 Route 11 (Section between  
 Yuen Long and North Lantau)  
 - Investigation

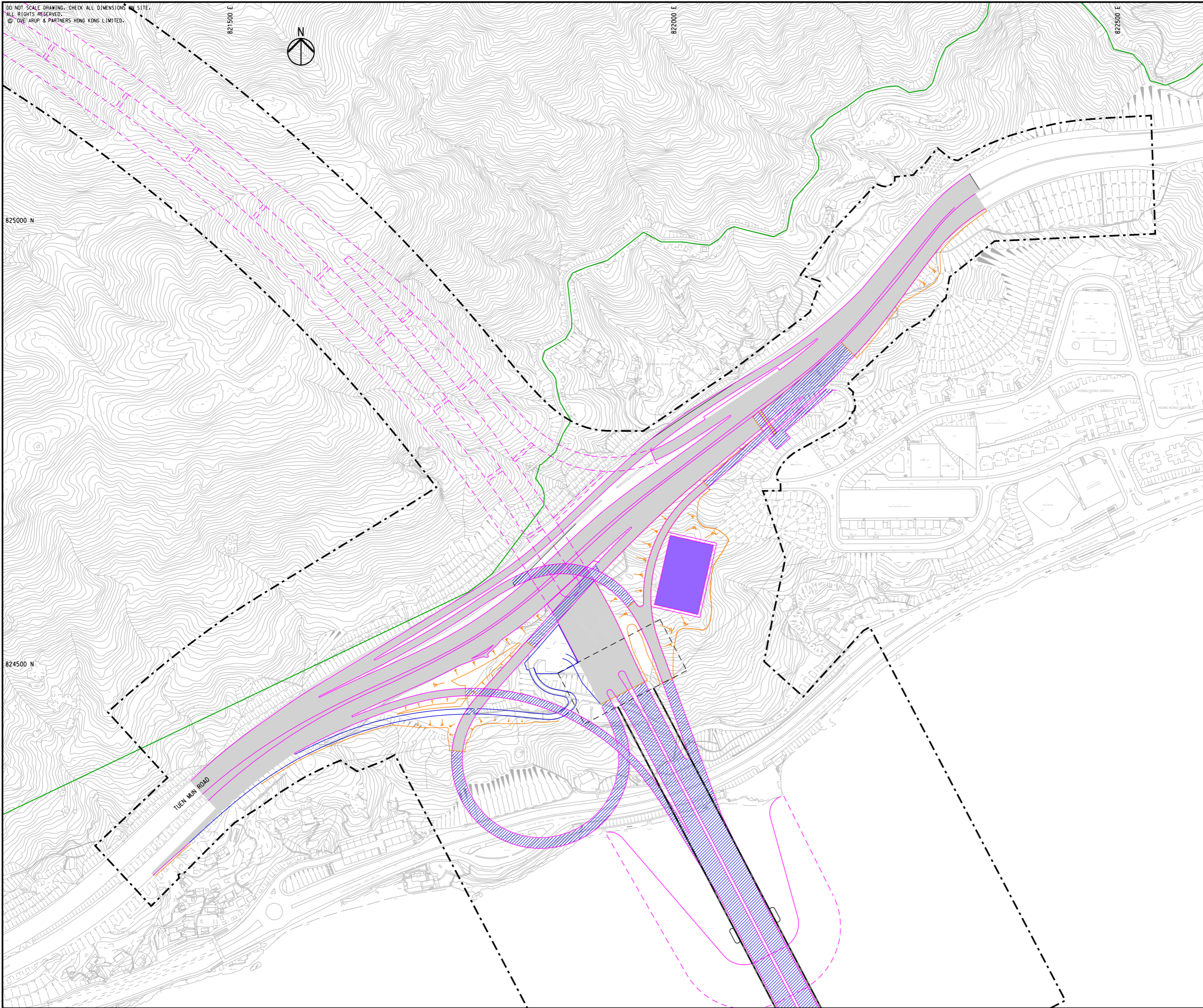
Drawing title  
**CONSTRUCTION METHOD**  
 - SHEET 4

Drawing no. <b>FIGURE 2.6d</b>		Rev. <b>A</b>	
Drawn RY	Date 04/23	Checked IL	Approved SK
Scale 1:4000 @ A3		Status <b>PRELIMINARY</b>	

COPYRIGHT RESERVED



DO NOT SCALE DRAWING. CHECK ALL DIMENSIONS ON SITE.  
 ALL RIGHTS RESERVED.  
 © OVE ARUP & PARTNERS HONG KONG LIMITED.



**NOTES**

1. FOR NOTES AND LEGEND, REFER TO FIGURE 2.7a.

B	SECOND ISSUE	EF	07/23
A	FIRST ISSUE	EF	05/23
Rev	Description	By	Date

Consultant  
**ARUP**

Project title  
 Agreement No. CE 13/2021 (HY)  
 Route 11 (Section between  
 Yuen Long and North Lantau)  
 - Investigation

Drawing title  
**CONSTRUCTION METHOD  
 - SHEET 5**

Drawing no. <b>FIGURE 2.6e</b>		Rev. <b>B</b>	
Drawn RY	Date 04/23	Checked IL	Approved SK
Scale 1:4000 @ A3		Status <b>PRELIMINARY</b>	

COPYRIGHT RESERVED



DO NOT SCALE DRAWING. CHECK ALL DIMENSIONS ON SITE.  
 ALL RIGHTS RESERVED.  
 © OVE ARUP & PARTNERS HONG KONG LIMITED.



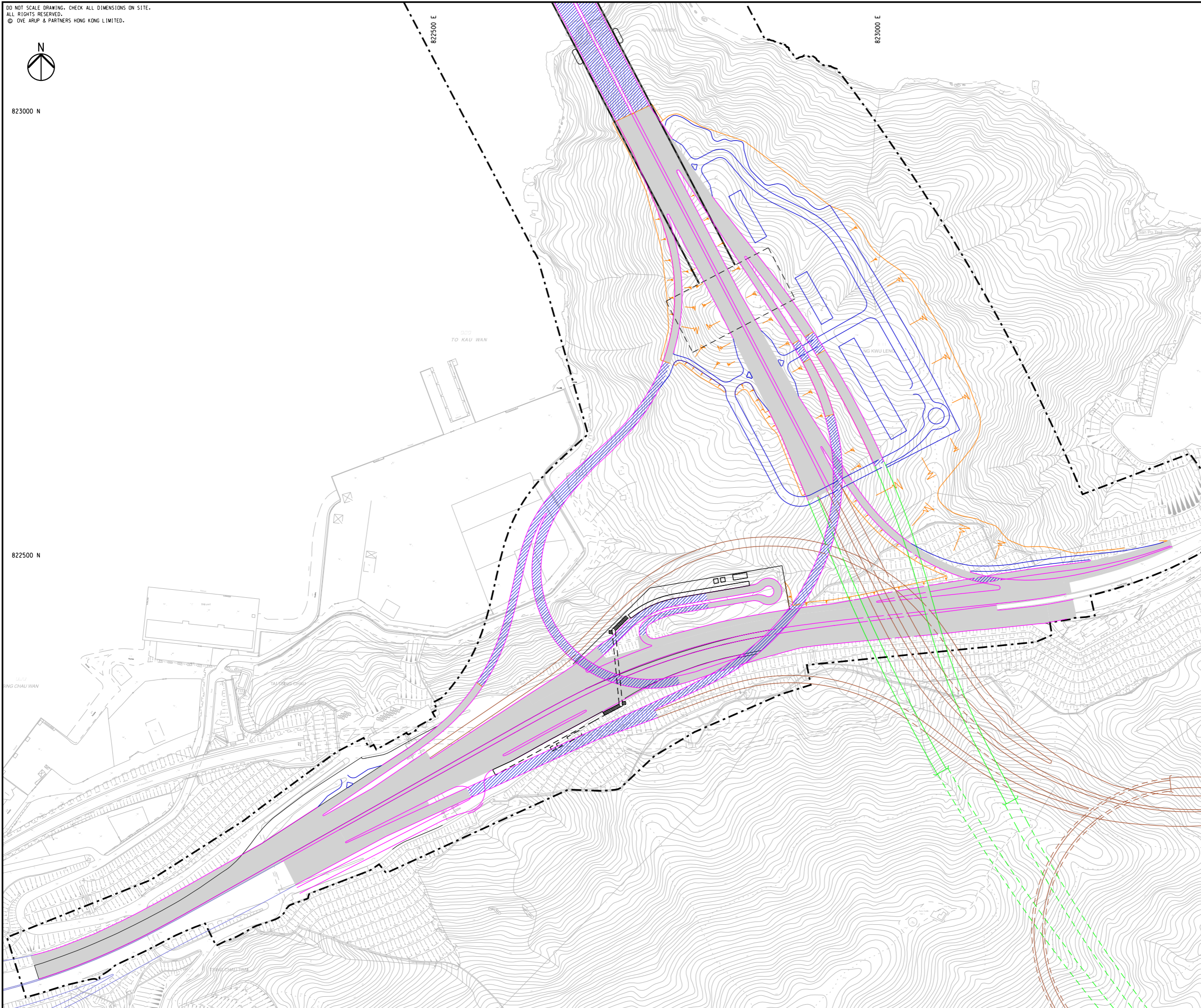
823000 N

822500 E

823000 E

822500 N

822500 N



**NOTES**

1. FOR NOTES AND LEGEND, REFER TO FIGURE 2.7a.

A	FIRST ISSUE	EF	05/23
Rev	Description	By	Date

Consultant  
**ARUP**

Project title  
 Agreement No. CE 13/2021 (HY)  
 Route 11 (Section between  
 Yuen Long and North Lantau)  
 - Investigation

Drawing title  
**CONSTRUCTION METHOD  
 -SHEET 6**

Drawing no. <b>FIGURE 2.6f</b>		Rev. <b>A</b>	
Drawn RY	Date 04/23	Checked IL	Approved SK
Scale 1:4000 @ A3		Status <b>PRELIMINARY</b>	

COPYRIGHT RESERVED