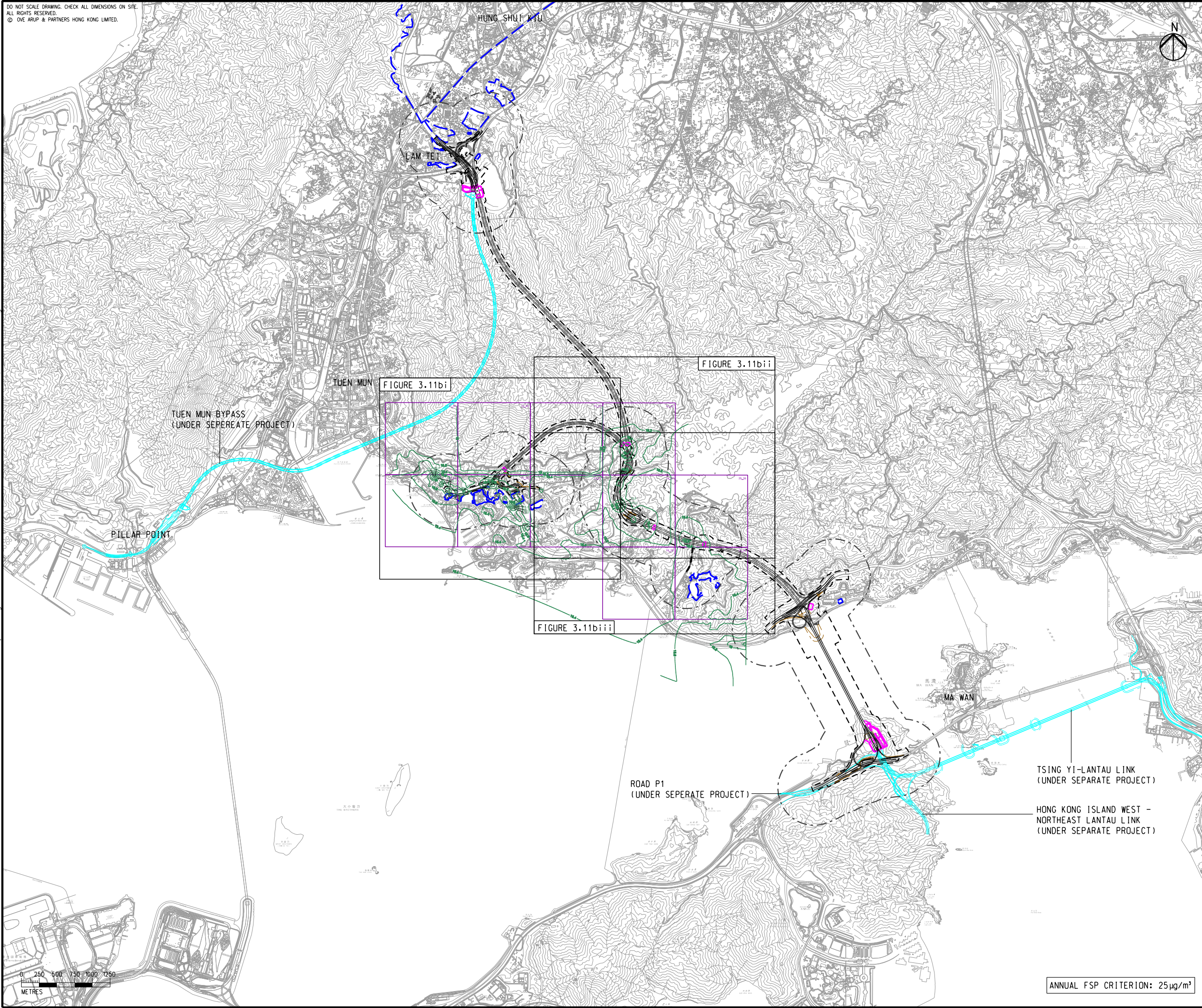


DO NOT SCALE DRAWING. CHECK ALL DIMENSIONS ON SITE.
ALL RIGHTS RESERVED.
© OVE ARUP & PARTNERS HONG KONG LIMITED.

EIA Report\Figure 3.11b - Contours Annual FSP (Year 2033) in SKW, SL and TL.dgn

23/8/2023

Printed by : richard-kh.lau
Filename :



- LEGEND**
- PROPOSED ELEVATED/ AT-GRADE ROAD
 - - - PROPOSED TUNNEL
 - ▭ PROJECT ELEMENT
 - - - SITE BOUNDARY
 - - - 500m CONSTRUCTION ASSESSMENT AREA
 - PLANNED ROAD NETWORK (UNDER SEPERATE PROJECTS)
 - ▭ COMMITTED/PLANNED DEVELOPMENTS
 - ▭ CONCERNED PATH GRID
 - 25 — FSP CONTOUR, $\mu\text{g}/\text{m}^3$

Rev	Description	By	Date
B	SECOND ISSUE	GL	08/23
A	FIRST ISSUE	GL	06/23

Consultant
ARUP

Project Title
**ROUTE 11
(SECTION BETWEEN YUEN LONG AND NORTH LANTAU) - INVESTIGATION**

Drawing title
CONTOURS OF CUMULATIVE ANNUAL FSP CONCENTRATION AT 1.5m ABOVE GROUND (YEAR 2033) IN SO KWU WAT, SIU LAM AND TAI LAM

Drawing no. FIGURE 3.11b		Rev. B	
Drawn GL	Date 08/23	Checked TL	Approved FC
Scale 1:50000 @ A3		Status PRELIMINARY	

COPYRIGHT RESERVED

**路政署
HIGHWAYS
DEPARTMENT**

ANNUAL FSP CRITERION: $25 \mu\text{g}/\text{m}^3$

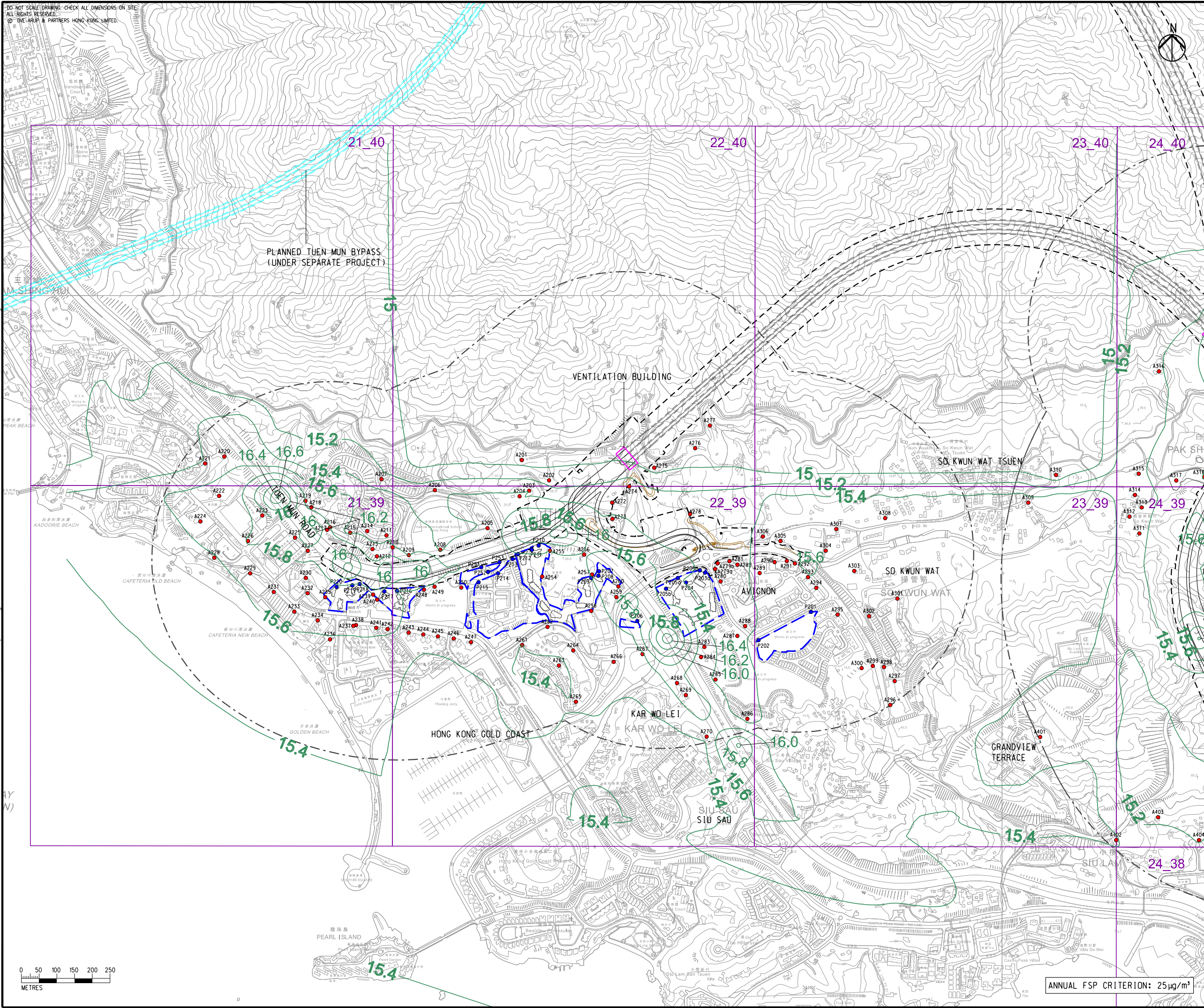


DO NOT SCALE DRAWING. CHECK ALL DIMENSIONS ON SITE.
 ALL RIGHTS RESERVED.
 © ARUP & PARTNERS HONG KONG LIMITED.

EIA Report\Figure 3.11bi - Contours Annual FSP (Year 2033) in SKW, SL and TL.dgn

22/8/2023

Printed by : richard-kh.lau
 Filename :



- LEGEND**
- PROPOSED ELEVATED/ AT-GRADE ROAD
 - PROPOSED TUNNEL
 - HIGHWAY/ TUNNEL OPERATION AND MAINTENANCE FACILITIES
 - PROJECT ELEMENT
 - SITE BOUNDARY
 - 500m OPERATIONAL ASSESSMENT AREA
 - PLANNED TUEN MUN BYPASS (UNDER SEPARATE PROJECT)
 - COMMITTED/PLANNED DEVELOPMENTS
 - CONCERNED PATH GRID
 - EXISTING REPRESENTATIVE AIR SENSITIVE RECEIVERS
 - COMMITTED/PLANNED REPRESENTATIVE AIR SENSITIVE RECEIVERS
 - 25 — FSP CONTOUR, $\mu\text{g}/\text{m}^3$

B SECOND ISSUE	GL 08/23
A FIRST ISSUE	GL 06/23
Rev Description	By Date

Consultant **ARUP**

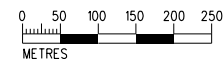
Project Title
ROUTE 11
 (SECTION BETWEEN YUEN LONG AND NORTH LANTAU) - INVESTIGATION

Drawing title
CONTOURS OF CUMULATIVE ANNUAL FSP CONCENTRATION AT 1.5m ABOVE GROUND (YEAR 2033) IN SO KWU WAT, SIU LAM AND TAI LAM

Drawing no. FIGURE 3.11bi		Rev. B	
Drawn GL	Date 08/23	Checked TL	Approved FC
Scale 1:10000 @ A3	Status PRELIMINARY		

COPYRIGHT RESERVED

路政署
HIGHWAYS DEPARTMENT



ANNUAL FSP CRITERION: $25 \mu\text{g}/\text{m}^3$

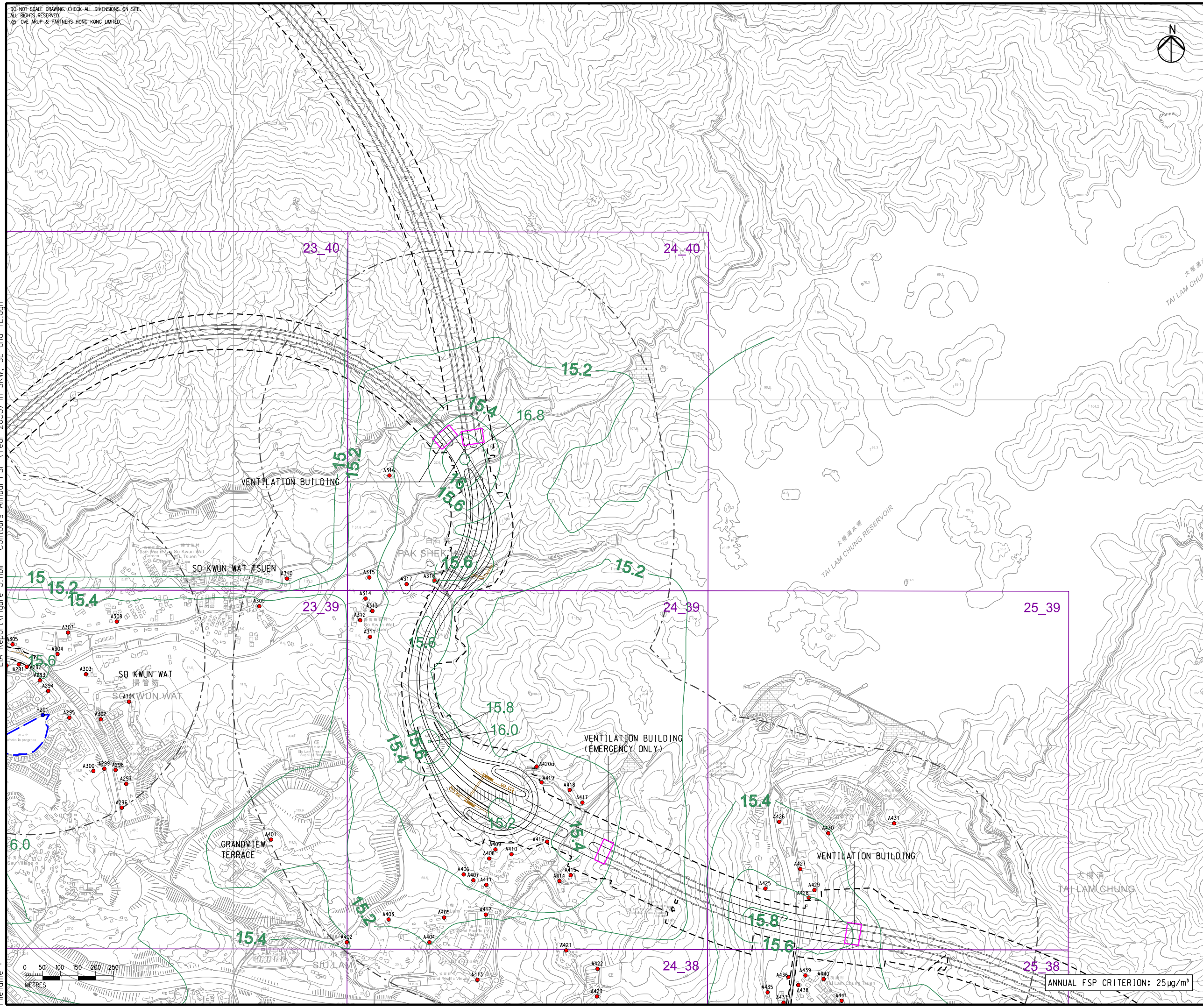
DO NOT SCALE DRAWING. CHECK ALL DIMENSIONS ON SITE.
 ALL RIGHTS RESERVED.
 © OVE ARUP & PARTNERS HONG KONG LIMITED



- LEGEND**
- PROPOSED ELEVATED/ AT-GRADE ROAD
 - PROPOSED TUNNEL
 - HIGHWAY/ TUNNEL OPERATION AND MAINTENANCE FACILITIES
 - PROJECT ELEMENT
 - SITE BOUNDARY
 - 500m OPERATIONAL ASSESSMENT AREA
 - PLANNED TUEN MUN BYPASS (UNDER SEPARATE PROJECT)
 - COMMITTED/PLANNED DEVELOPMENTS
 - CONCERNED PATH GRID
 - EXISTING REPRESENTATIVE AIR SENSITIVE RECEIVERS
 - COMMITTED/PLANNED REPRESENTATIVE AIR SENSITIVE RECEIVERS
 - 25 FSP CONTOUR, $\mu\text{g}/\text{m}^3$

EIA Report\Figure 3.11bii - Contours Annual FSP (Year 2033) in SKW, SL and TL.dgn

Printed by : richard-kh-lau
 File name : 22/8/2023



B	SECOND ISSUE	GL	08/23
A	FIRST ISSUE	GL	06/23
Rev	Description	By	Date

Consultant **ARUP**

Project Title
**ROUTE 11
 (SECTION BETWEEN YUEN LONG
 AND NORTH LANTAU) -
 INVESTIGATION**

Drawing title
**CONTOURS OF CUMULATIVE
 ANNUAL FSP CONCENTRATION
 AT 1.5m ABOVE GROUND
 (YEAR 2033) IN SO KWU WAT,
 SIU LAM AND TAI LAM**

Drawing no.	FIGURE 3.11bii		Rev.	B			
Drawn	GL	Date	08/23	Checked	TL	Approved	FC
Scale	1:10000 @ A3		Status	PRELIMINARY			

COPYRIGHT RESERVED

路政署
 HIGHWAYS
 DEPARTMENT

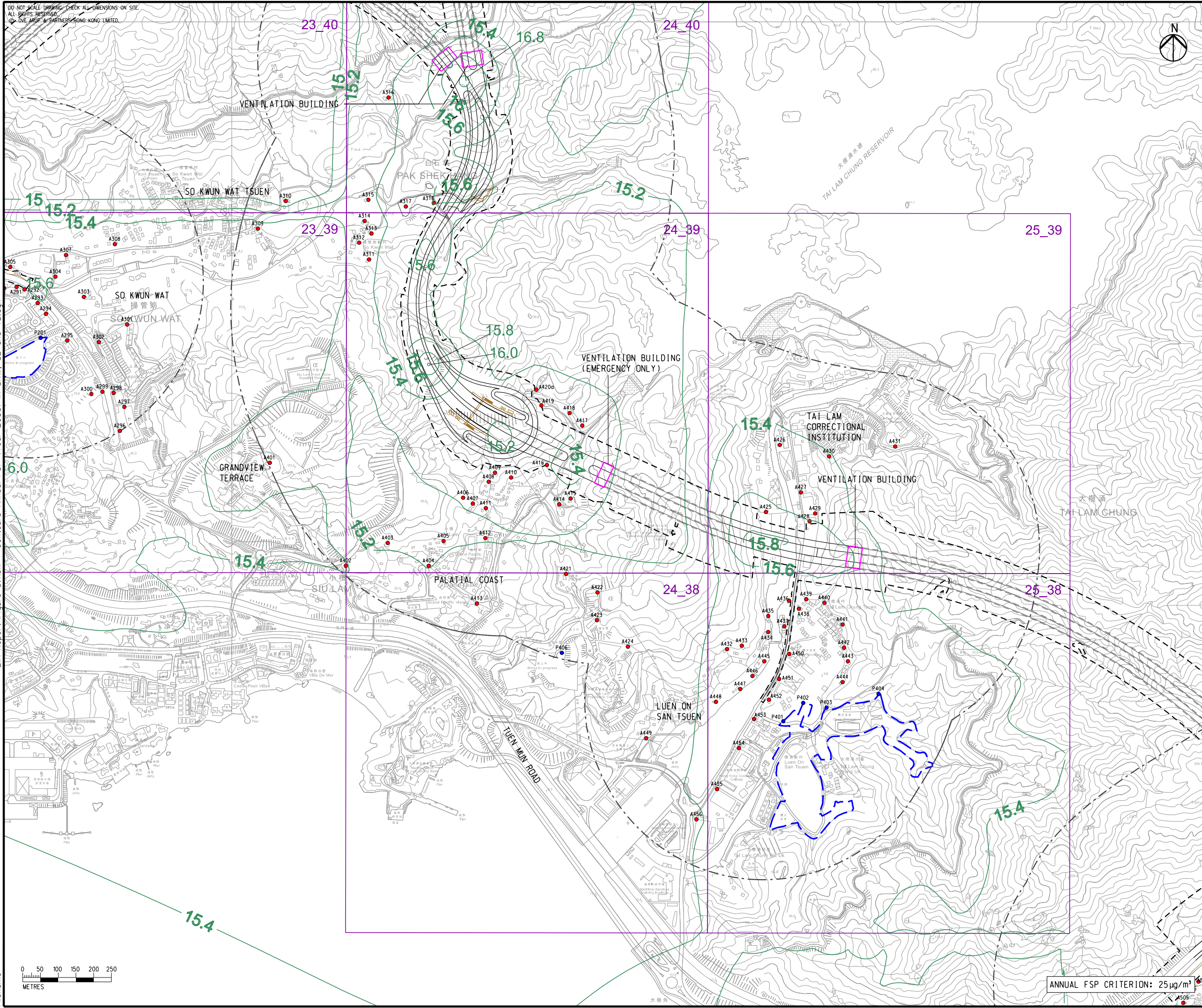
ANNUAL FSP CRITERION: $25 \mu\text{g}/\text{m}^3$

DO NOT SCALE DRAWING. CHECK ALL DIMENSIONS ON SITE.
ALL RIGHTS RESERVED.
© DVE ARUP & PARTNERS HONG KONG LIMITED.

EIA Report\Figure 3.11biii - Contours Annual FSP (Year 2033) in SKW, SL and TL.dgn

22/8/2023

Printed by : richard-kh.lau
Filename :



- LEGEND**
- PROPOSED ELEVATED/ AT-GRADE ROAD
 - PROPOSED TUNNEL
 - HIGHWAY/ TUNNEL OPERATION AND MAINTENANCE FACILITIES
 - PROJECT ELEMENT
 - SITE BOUNDARY
 - 500m OPERATIONAL ASSESSMENT AREA
 - PLANNED TUEN MUN BYPASS (UNDER SEPARATE PROJECT)
 - COMMITTED/PLANNED DEVELOPMENTS
 - CONCERNED PATH GRID
 - EXISTING REPRESENTATIVE AIR SENSITIVE RECEIVERS
 - COMMITTED/PLANNED REPRESENTATIVE AIR SENSITIVE RECEIVERS
 - FSP CONTOUR, $\mu\text{g}/\text{m}^3$

B	SECOND ISSUE	GL	08/23
A	FIRST ISSUE	GL	06/23
Rev	Description	By	Date

Consultant **ARUP**

Project Title
**ROUTE 11
(SECTION BETWEEN YUEN LONG
AND NORTH LANTAU) -
INVESTIGATION**

Drawing title
**CONTOURS OF CUMULATIVE
ANNUAL FSP CONCENTRATION
AT 1.5m ABOVE GROUND
(YEAR 2033) IN SO KWU WAT,
SIU LAM AND TAI LAM**

Drawing no. FIGURE 3.11biii		Rev. B	
Drawn GL	Date 08/23	Checked TL	Approved FC
Scale 1:10000 @ A3		Status PRELIMINARY	

COPYRIGHT RESERVED

**路政署
HIGHWAYS
DEPARTMENT**

ANNUAL FSP CRITERION: $25 \mu\text{g}/\text{m}^3$