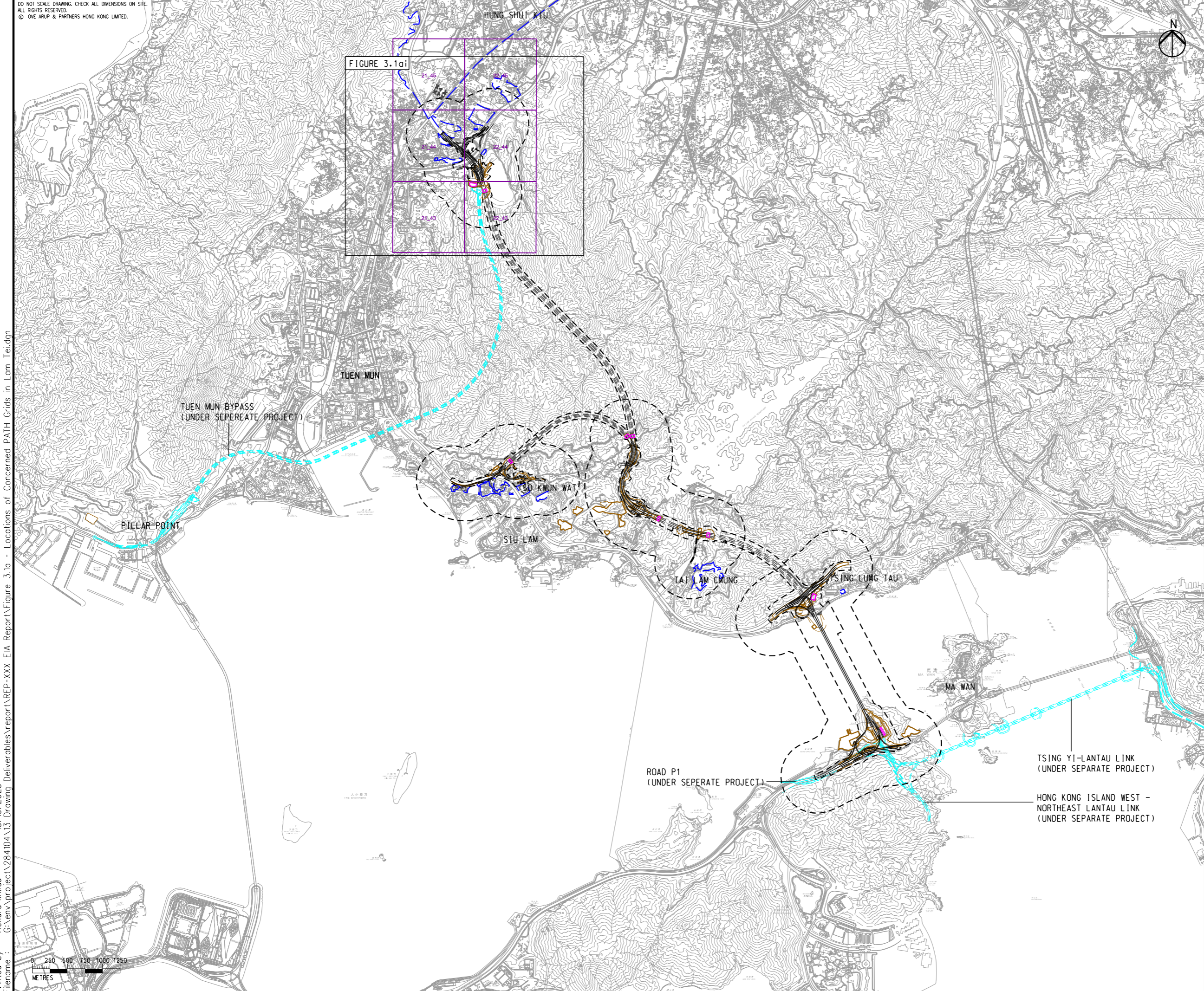


DO NOT SCALE DRAWING. CHECK ALL DIMENSIONS ON SITE.  
ALL RIGHTS RESERVED.  
© OVE ARUP & PARTNERS HONG KONG LIMITED.



- LEGEND**
- PROPOSED ELEVATED/ AT-GRADE ROAD
  - PROPOSED TUNNEL
  - HIGHWAY/ TUNNEL OPERATION AND MAINTENANCE FACILITIES
  - PROJECT ELEMENT
  - SITE BOUNDARY
  - 500m OPERATIONAL ASSESSMENT AREA
  - PLANNED ROAD NETWORK (UNDER SEPERATE PROJECTS)
  - COMMITTED/PLANNED DEVELOPMENTS
  - CONCERNED PATH GRID

Rev	Description	By	Date
C	THIRD ISSUE	GL	08/23
B	SECOND ISSUE	GL	06/23
A	FIRST ISSUE	GL	05/23

Consultant  
**ARUP**

Project Title  
**ROUTE 11  
(SECTION BETWEEN YUEN LONG  
AND NORTH LANTAU) -  
INVESTIGATION**

Drawing title  
**LOCATIONS OF CONCERNED  
PATH GRIDS IN LAM TEI**

Drawing no.		Rev.	
FIGURE 3.1a		C	
Drawn	Date	Checked	Approved
GL	08/23	TL	FC
Scale	Status		PRELIMINARY
1:50000 @ A3			

COPYRIGHT RESERVED  
 **路政署  
HIGHWAYS  
DEPARTMENT**

Printed by : richard-kh.lau  
Filename : G:\env\project\284\04\13 Drawing Deliverables\report\REP-XXX EIA Report\Figure 3.1a - Locations of Concerned PATH Grids in Lam Tei.dgn  
18/10/2023



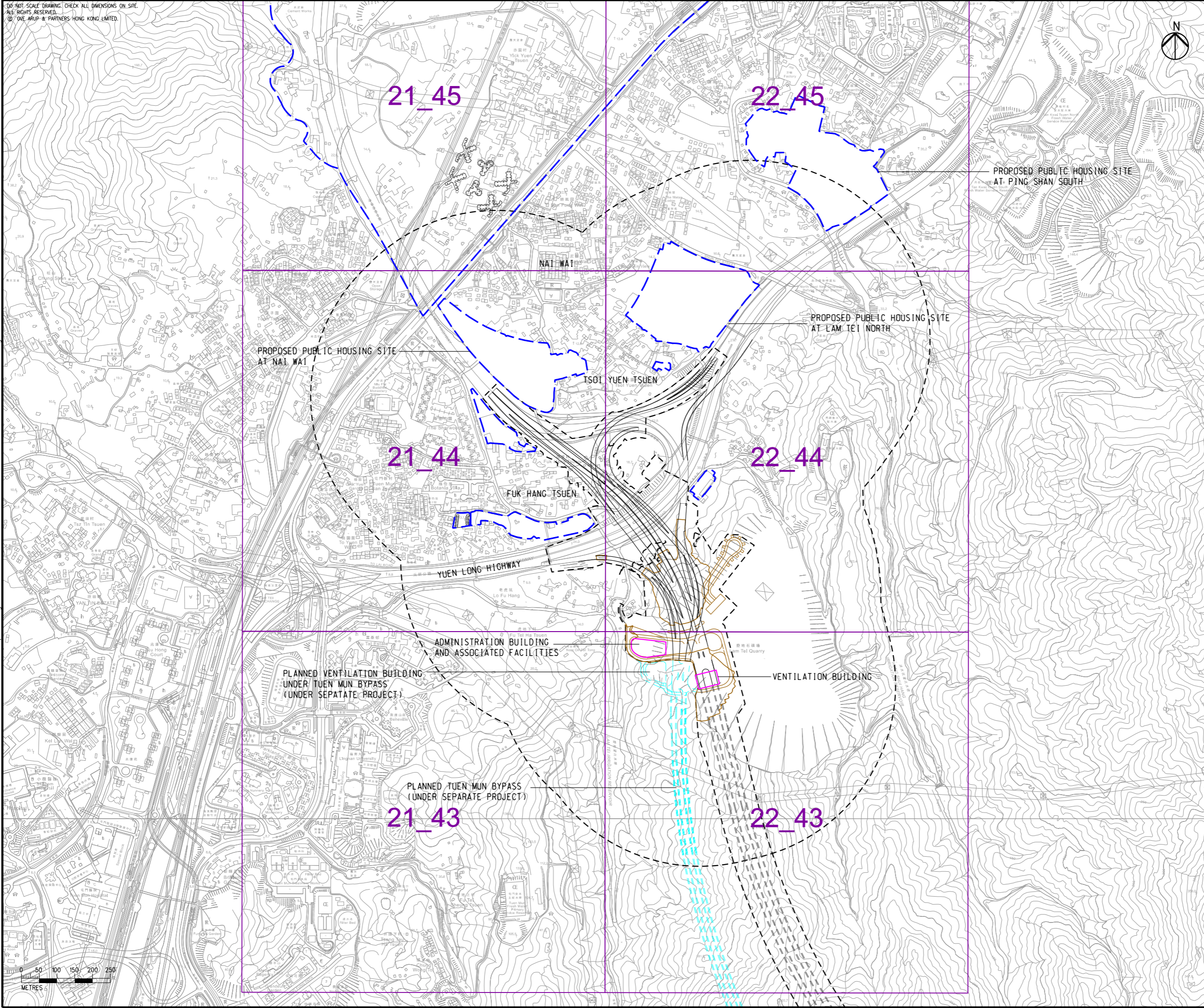


DO NOT SCALE DRAWING. CHECK ALL DIMENSIONS ON SITE.  
ALL RIGHTS RESERVED.  
© 2016 ARUP & PARTNERS HONG KONG LIMITED.

EIA Report\Figure 3.1ai - Locations of Concerned PATH Grids in Lam Tei.dgn

18/8/2023

Printed by : richard-kh-lau  
Filename :



- LEGEND**
- PROPOSED ELEVATED/ AT-GRADE ROAD
  - PROPOSED TUNNEL
  - HIGHWAY/ TUNNEL OPERATION AND MAINTENANCE FACILITIES
  - PROJECT ELEMENT
  - SITE BOUNDARY
  - 500m OPERATIONAL ASSESSMENT AREA
  - PLANNED TUEN MUN BYPASS (UNDER SEPARATE PROJECT)
  - COMMITTED/PLANNED DEVELOPMENTS
  - CONCERNED PATH GRID

Rev	Description	By	Date
C	THIRD ISSUE	GL	08/23
B	SECOND ISSUE	GL	06/23
A	FIRST ISSUE	GL	05/23

Consultant  
**ARUP**

Project Title  
**ROUTE 11  
(SECTION BETWEEN YUEN LONG  
AND NORTH LANTAU) -  
INVESTIGATION**

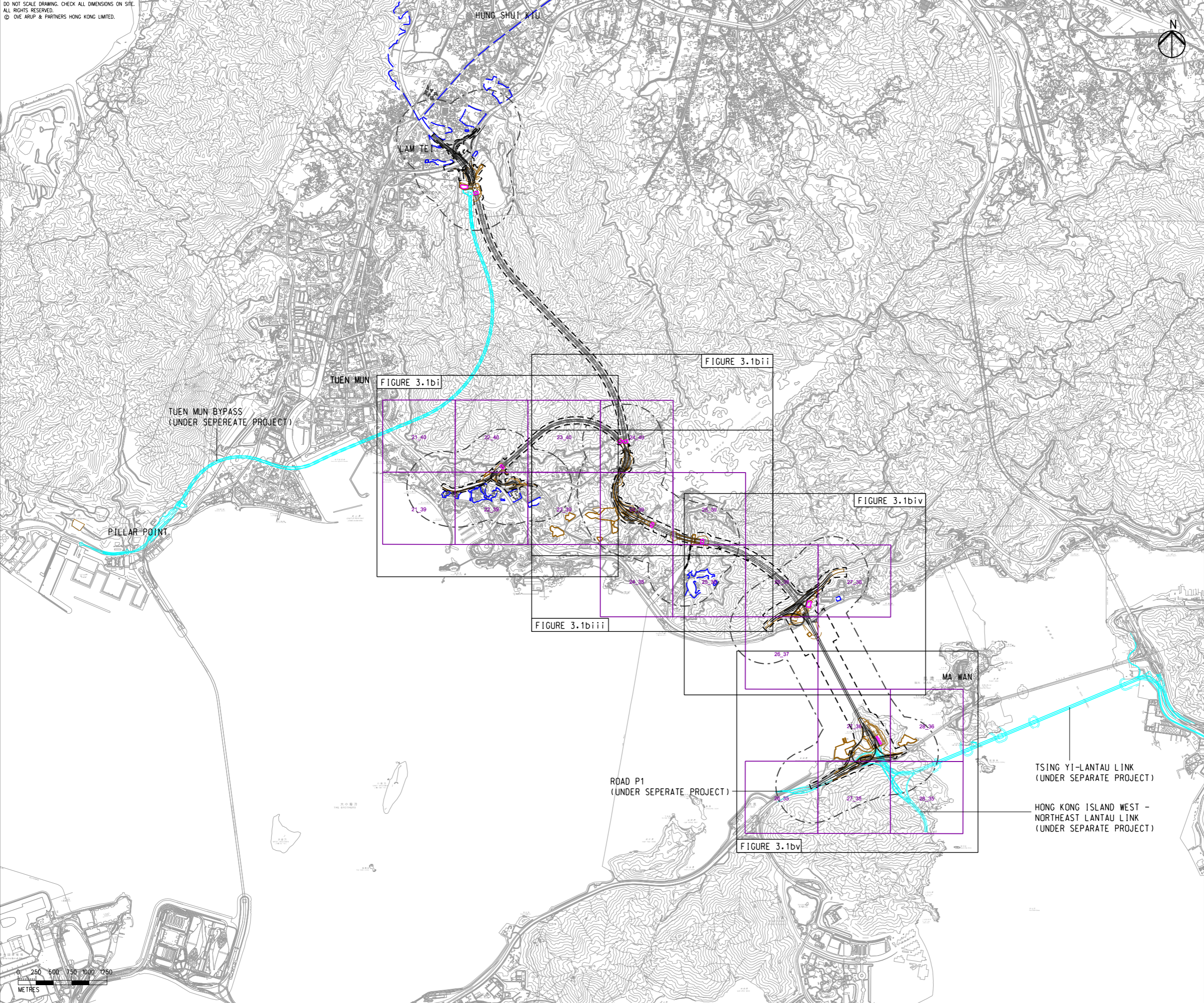
Drawing title  
**LOCATIONS OF CONCERNED  
PATH GRIDS IN LAM TEI**

Drawing no. <b>FIGURE 3.1ai</b>		Rev. <b>B</b>	
Drawn GL	Date 06/23	Checked TL	Approved FC
Scale 1:10000 @ A3		Status PRELIMINARY	





DO NOT SCALE DRAWING. CHECK ALL DIMENSIONS ON SITE.  
ALL RIGHTS RESERVED.  
© OVE ARUP & PARTNERS HONG KONG LIMITED.



**LEGEND**

- PROPOSED ELEVATED/ AT-GRADE ROAD
- PROPOSED TUNNEL
- HIGHWAY/ TUNNEL OPERATION AND MAINTENANCE FACILITIES
- PROJECT ELEMENT
- SITE BOUNDARY
- 500m OPERATIONAL ASSESSMENT AREA
- PLANNED ROAD NETWORK (UNDER SEPERATE PROJECTS)
- COMMITTED/PLANNED DEVELOPMENTS
- 24\_39 CONCERNED PATH GRID

Rev	Description	By	Date
C	THIRD ISSUE	GL	08/23
B	SECOND ISSUE	GL	06/23
A	FIRST ISSUE	GL	05/23

Consultant  
**ARUP**

Project Title  
**ROUTE 11  
(SECTION BETWEEN YUEN LONG AND NORTH LANTAU) - INVESTIGATION**

Drawing title  
**LOCATIONS OF CONCERNED PATH GRIDS IN SO KWUN WAT, SIU LAM AND TAI LAM, TSING LUNG TAU AND NORTH LANTAU AREAS**

Drawing no. <b>FIGURE 3.1b</b>		Rev. <b>C</b>	
Drawn GL	Date 08/23	Checked TL	Approved FC
Scale 1:50000 @ A3		Status PRELIMINARY	

COPYRIGHT RESERVED

**路政署  
HIGHWAYS  
DEPARTMENT**

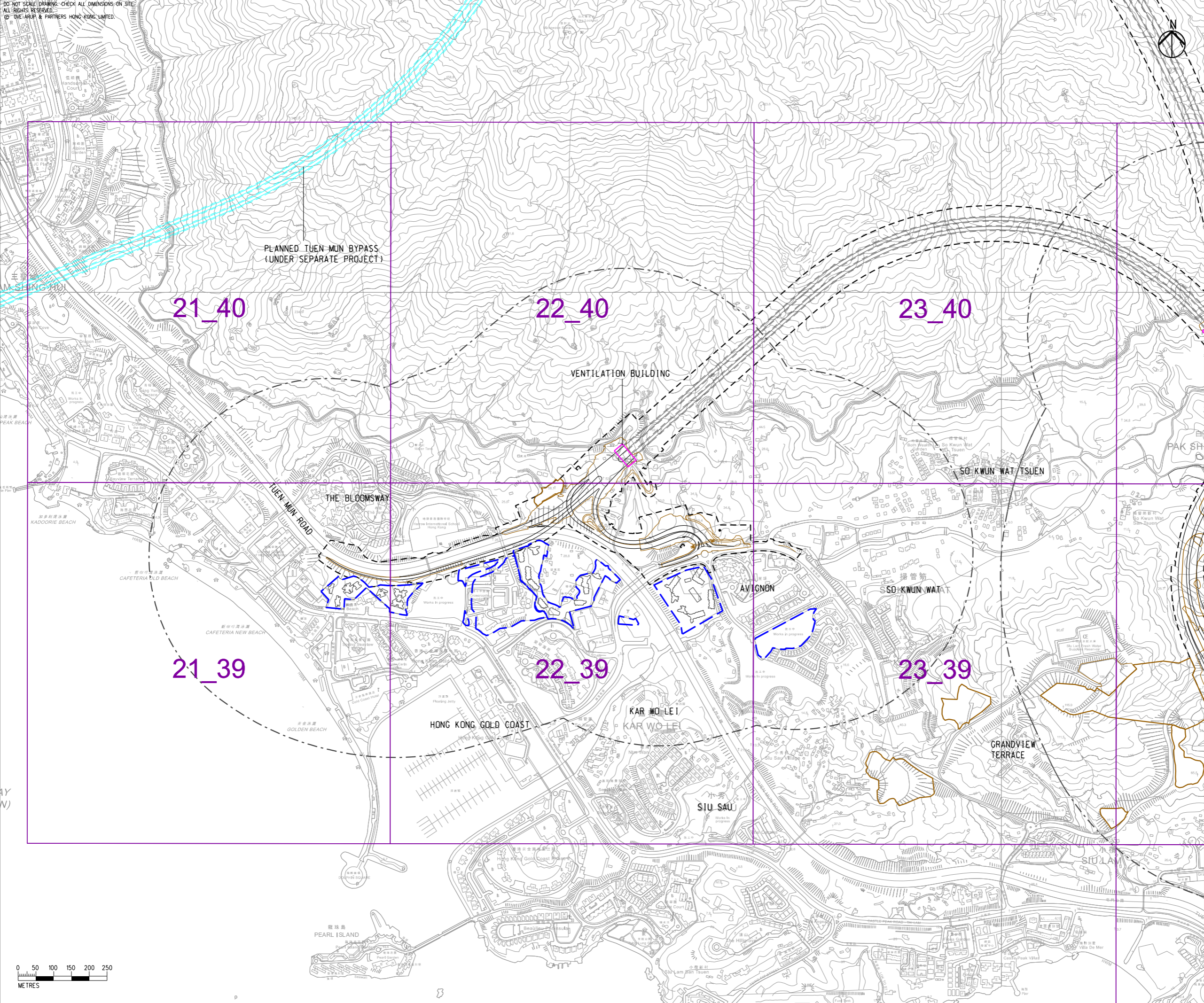




EIA Report\Figure 3.1bi - Locations of Concerned PATH Grids in So Kwun Wat, Siu Lam and Tai Lam, Tsing Lung Tau and North Lantau Areas.dgn

18/8/2023

Printed by : richard-kh.lau  
Filename :



LEGEND

- PROPOSED ELEVATED/ AT-GRADE ROAD
- PROPOSED TUNNEL
- HIGHWAY/ TUNNEL OPERATION AND MAINTENANCE FACILITIES
- PROJECT ELEMENT
- SITE BOUNDARY
- 500m OPERATIONAL ASSESSMENT AREA
- PLANNED TUEN MUN BYPASS (UNDER SEPARATE PROJECT)
- COMMITTED/PLANNED DEVELOPMENTS
- 22\_44 CONCERNED PATH GRID

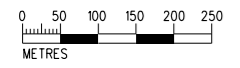
C	THIRD ISSUE	GL	08/23
B	SECOND ISSUE	GL	06/23
A	FIRST ISSUE	GL	05/23
Rev	Description	By	Date

Consultant **ARUP**

Project Title  
**ROUTE 11**  
 (SECTION BETWEEN YUEN LONG AND NORTH LANTAU) - INVESTIGATION

Drawing title  
**LOCATIONS OF CONCERNED PATH GRIDS IN SO KWUN WAT, SIU LAM AND TAI LAM, TSING LUNG TAU AND NORTH LANTAU AREAS**

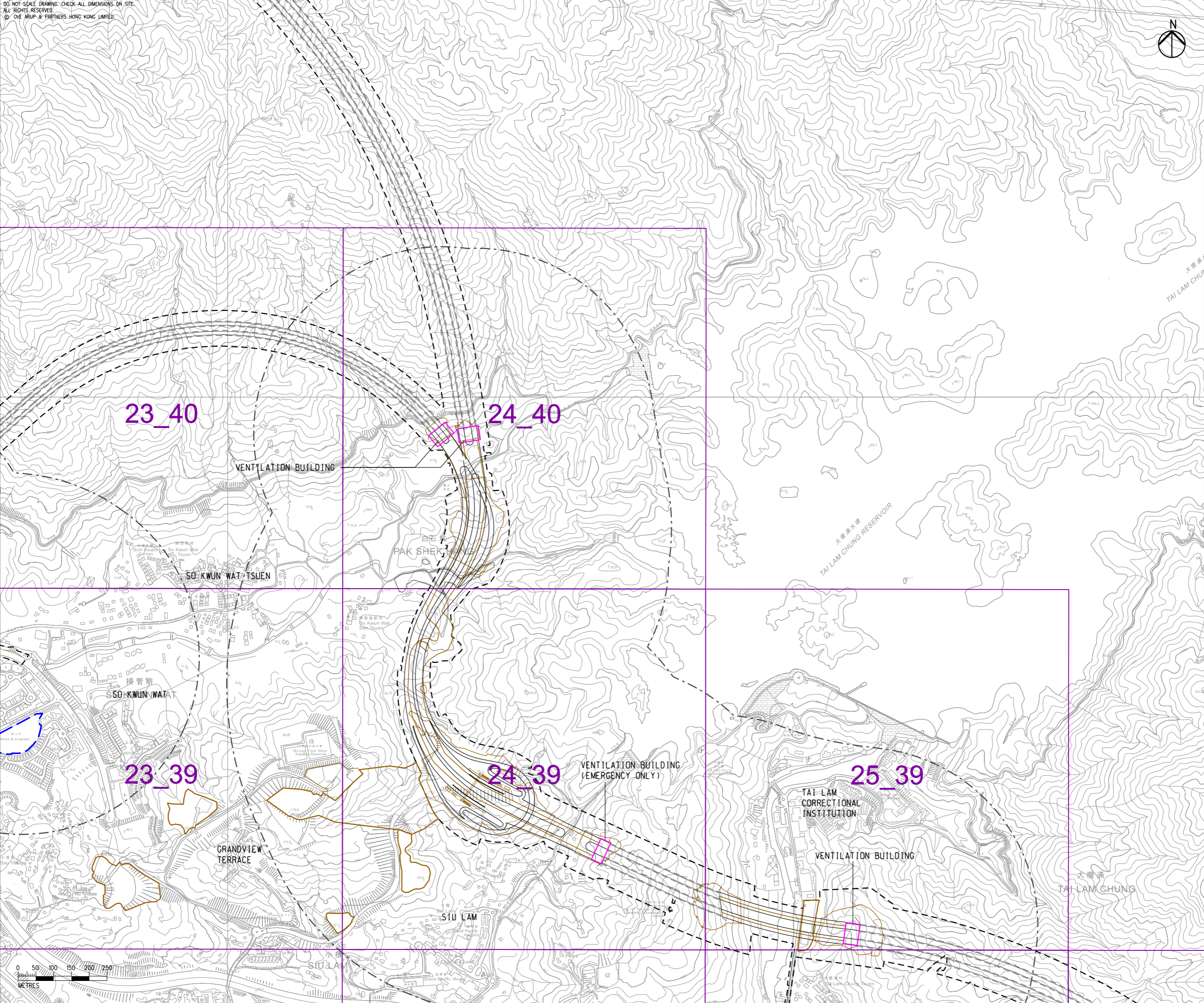
Drawing no. <b>FIGURE 3.1bi</b>		Rev. <b>C</b>	
Drawn GL	Date 08/23	Checked TL	Approved FC
Scale 1:10000 @ A3		Status PRELIMINARY	





EIA Report\Figure 3.1bi - Locations of Concerned PATH Grids in So Kwun Wat, Siu Lam and Tai Lam, Tsing Lung Tau and North Lantau Areas.dgn

DO NOT SCALE DRAWING. CHECK ALL DIMENSIONS ON SITE.  
ALL RIGHTS RESERVED.  
© OVE ARUP & PARTNERS HONG KONG LIMITED



- LEGEND**
- PROPOSED ELEVATED/ AT-GRADE ROAD
  - PROPOSED TUNNEL
  - HIGHWAY/ TUNNEL OPERATION AND MAINTENANCE FACILITIES
  - PROJECT ELEMENT
  - SITE BOUNDARY
  - 500m OPERATIONAL ASSESSMENT AREA
  - COMMITTED/PLANNED DEVELOPMENTS
  - 22\_44 CONCERNED PATH GRID

Rev	Description	By	Date
C	THIRD ISSUE	GL	08/23
B	SECOND ISSUE	GL	06/23
A	FIRST ISSUE	GL	05/23

Consultant  
**ARUP**

Project Title  
**ROUTE 11  
(SECTION BETWEEN YUEN LONG  
AND NORTH LANTAU) -  
INVESTIGATION**

Drawing title  
**LOCATIONS OF CONCERNED  
PATH GRIDS IN SO KWUN WAT,  
SIU LAM AND TAI LAM,  
TSING LUNG TAU AND  
NORTH LANTAU AREAS**

Drawing no. <b>FIGURE 3.1bi</b>		Rev. <b>C</b>	
Drawn GL	Date 08/23	Checked TL	Approved FC
Scale 1:10000 @ A3		Status PRELIMINARY	

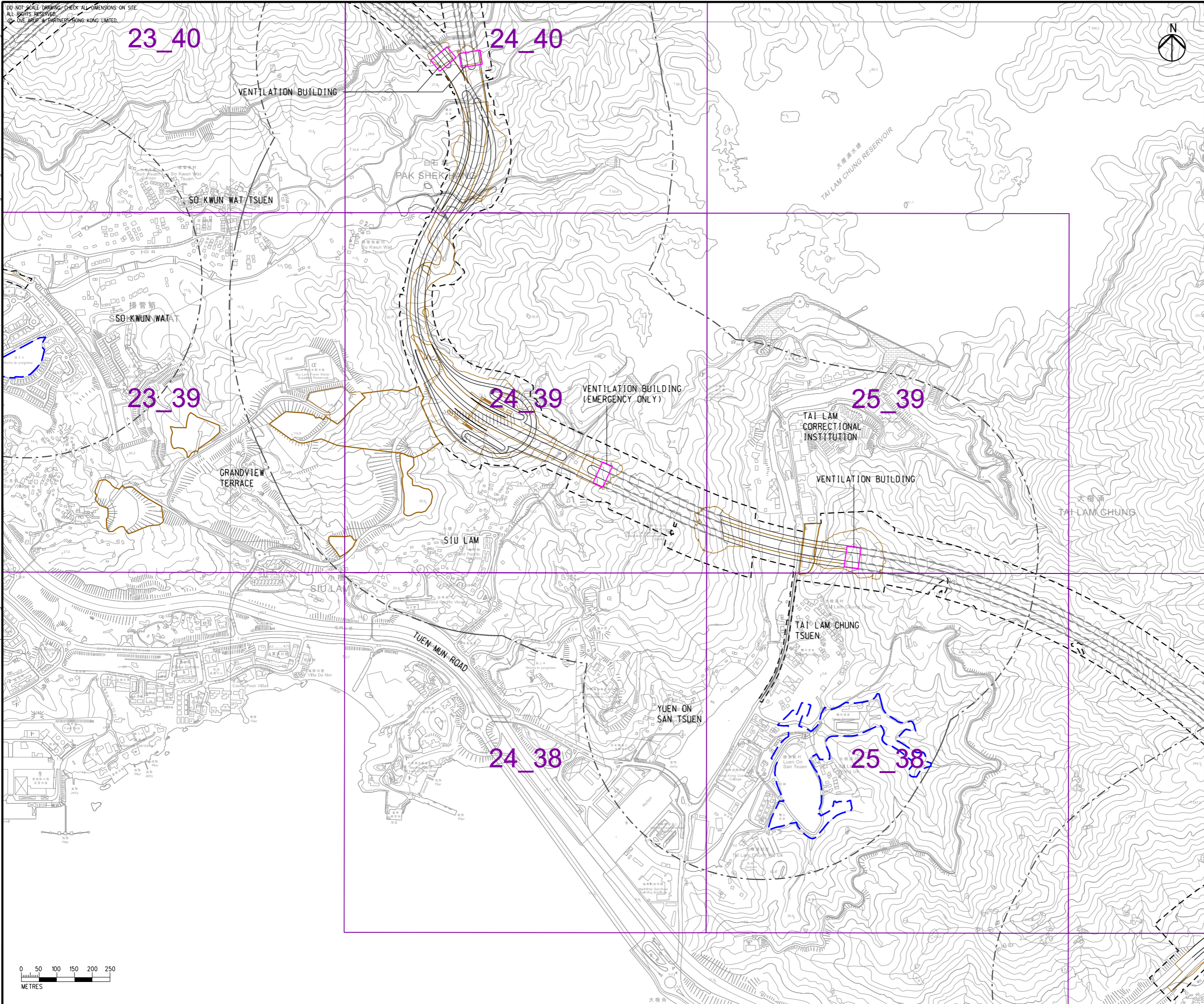
COPYRIGHT RESERVED

**路政署  
HIGHWAYS  
DEPARTMENT**

Printed by : richard-kh.lau  
Filename :







- LEGEND**
- PROPOSED ELEVATED/ AT-GRADE ROAD
  - PROPOSED TUNNEL
  - HIGHWAY/ TUNNEL OPERATION AND MAINTENANCE FACILITIES
  - PROJECT ELEMENT
  - SITE BOUNDARY
  - 500m OPERATIONAL ASSESSMENT AREA
  - COMMITTED/PLANNED DEVELOPMENTS
  - CONCERNED PATH GRID

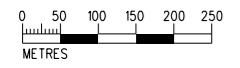
Rev	Description	By	Date
C	THIRD ISSUE	GL	08/23
B	SECOND ISSUE	GL	06/23
A	FIRST ISSUE	GL	05/23

Consultant  
**ARUP**

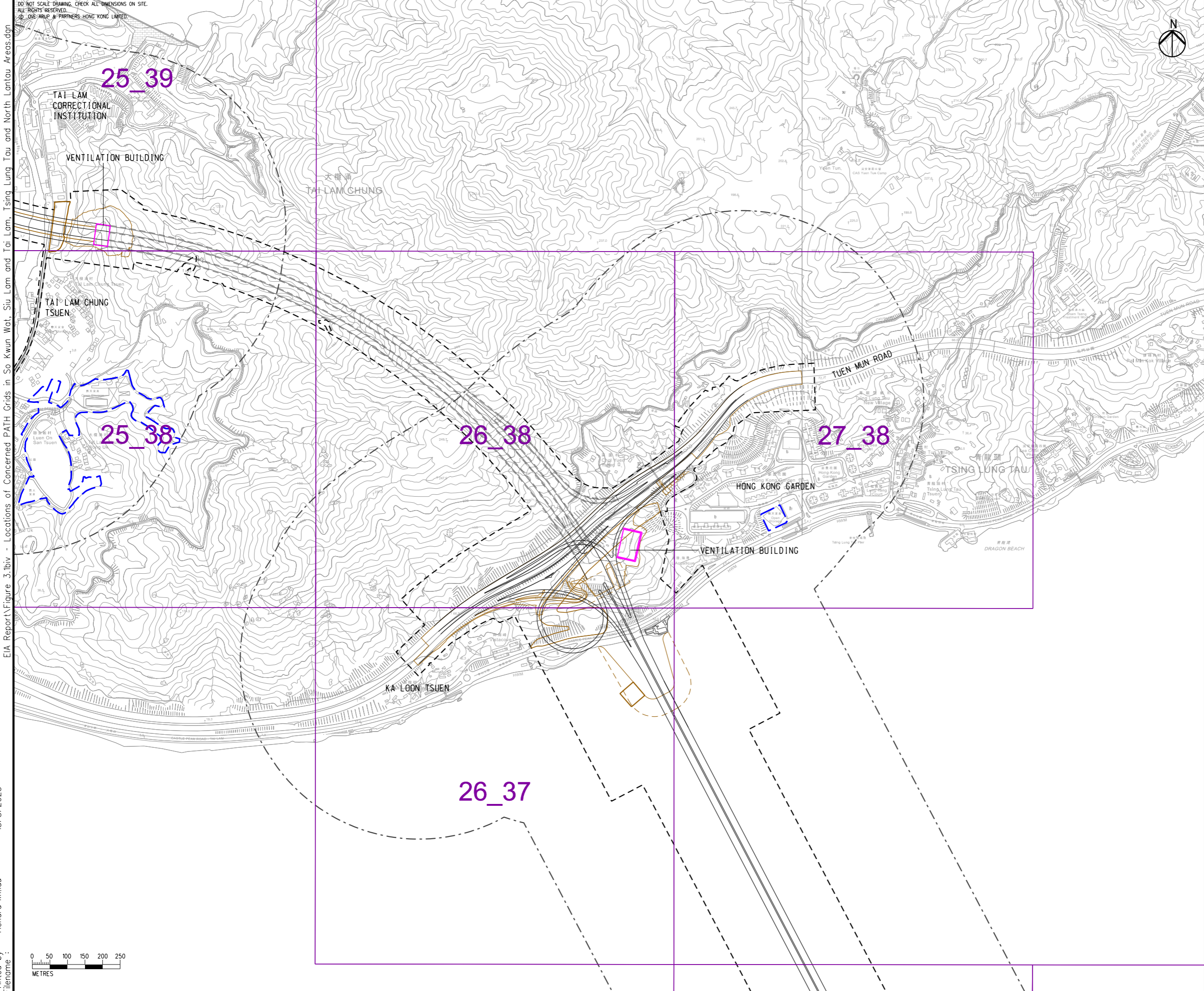
Project Title  
**ROUTE 11  
(SECTION BETWEEN YUEN LONG AND NORTH LANTAU) - INVESTIGATION**

Drawing title  
**LOCATIONS OF CONCERNED PATH GRIDS IN SO KWUN WAT, SIU LAM AND TAI LAM, TSING LUNG TAU AND NORTH LANTAU AREAS**

Drawing no. <b>FIGURE 3.1biii</b>		Rev. <b>C</b>	
Drawn GL	Date 08/23	Checked TL	Approved FC
Scale 1:10000 @ A3		Status PRELIMINARY	







EIA Report\Figure 3.1biv - Locations of Concerned PATH Grids in So Kwun Wat, Siu Lam and Tai Lam, Tsing Lung Tau and North Lantau Areas.dgn

Printed by : richard-kh.lau  
Filename : 18/8/2023

DO NOT SCALE DRAWING. CHECK ALL DIMENSIONS ON SITE.  
ALL RIGHTS RESERVED.  
© 2023 ARUP & PARTNERS HONG KONG LIMITED.



- LEGEND**
- PROPOSED ELEVATED/ AT-GRADE ROAD
  - PROPOSED TUNNEL
  - HIGHWAY/ TUNNEL OPERATION AND MAINTENANCE FACILITIES
  - PROJECT ELEMENT
  - SITE BOUNDARY
  - 500m OPERATIONAL ASSESSMENT AREA
  - COMMITTED/PLANNED DEVELOPMENTS
  - CONCERNED PATH GRID

Rev	Description	By	Date
C	THIRD ISSUE	GL	08/23
B	SECOND ISSUE	GL	06/23
A	FIRST ISSUE	GL	05/23

Consultant  
**ARUP**

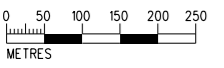
Project Title  
**ROUTE 11  
(SECTION BETWEEN YUEN LONG  
AND NORTH LANTAU) -  
INVESTIGATION**

Drawing title  
**LOCATIONS OF CONCERNED  
PATH GRIDS IN SO KWUN WAT,  
SIU LAM AND TAI LAM,  
TSING LUNG TAU AND  
NORTH LANTAU AREAS**

Drawing no. <b>FIGURE 3.1biv</b>		Rev. <b>C</b>	
Drawn GL	Date 08/23	Checked TL	Approved FC
Scale 1:10000 @ A3		Status PRELIMINARY	

COPYRIGHT RESERVED

**路政署  
HIGHWAYS  
DEPARTMENT**





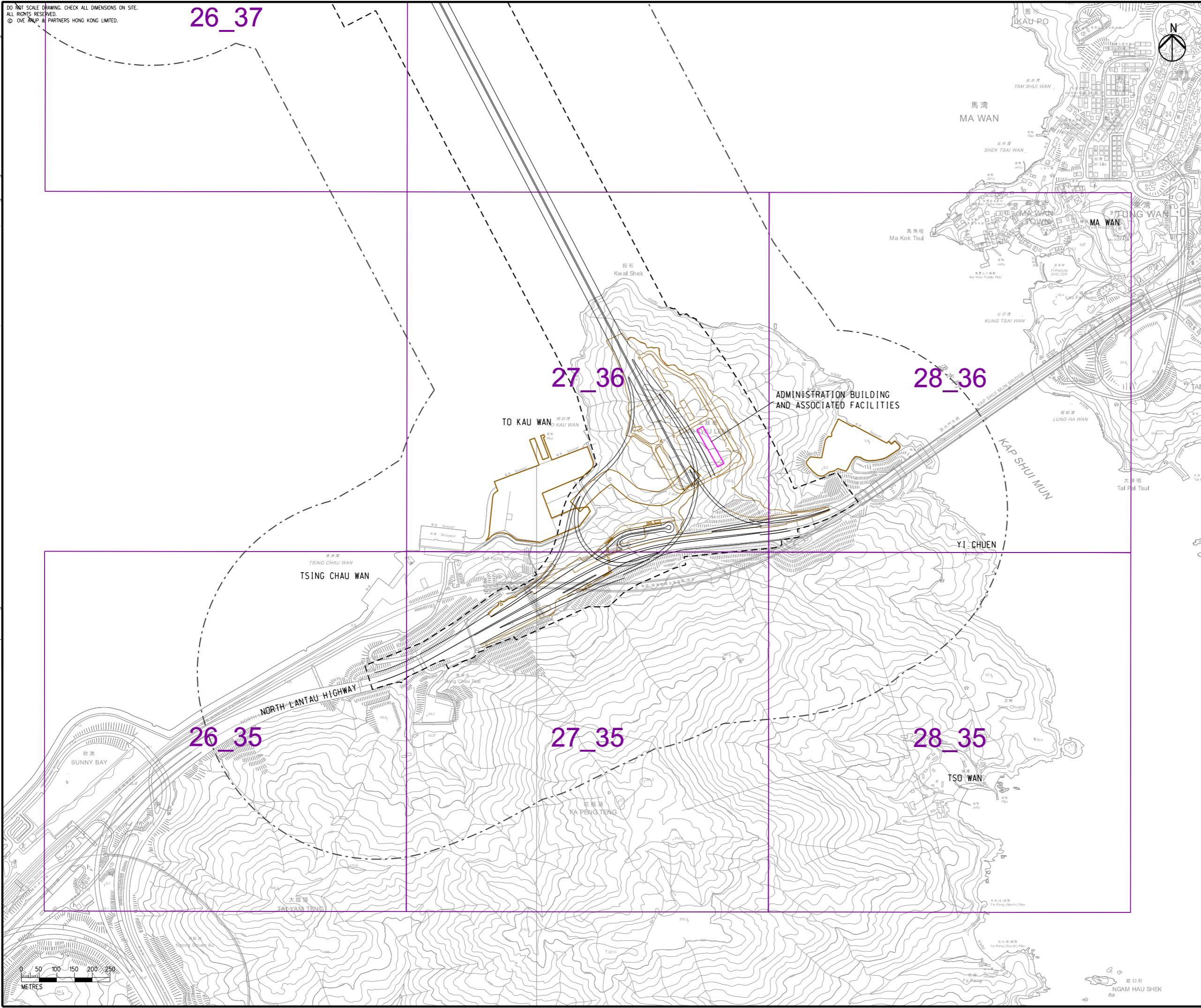
DO NOT SCALE DRAWING. CHECK ALL DIMENSIONS ON SITE.  
 ALL RIGHTS RESERVED.  
 © OVE ARUP & PARTNERS HONG KONG LIMITED.

26\_37

EIA Report\Figure 3.1bv - Locations of Concerned PATH Grids in So Kwun Wat, Siu Lam and Tai Lam, Tsing Lung Tau and North Lantau Areas.dgn

18/8/2023

Printed by : richard-kh.lau  
 Filename :



- LEGEND**
- PROPOSED ELEVATED/ AT-GRADE ROAD
  - PROPOSED TUNNEL
  - HIGHWAY/ TUNNEL OPERATION AND MAINTENANCE FACILITIES
  - PROJECT ELEMENT
  - SITE BOUNDARY
  - 500m OPERATIONAL ASSESSMENT AREA
  - COMMITTED/PLANNED DEVELOPMENTS
  - CONCERNED PATH GRID

Rev	Description	By	Date
C	THIRD ISSUE	GL	08/23
B	SECOND ISSUE	GL	06/23
A	FIRST ISSUE	GL	05/23

Consultant  
ARUP

Project Title  
**ROUTE 11**  
 (SECTION BETWEEN YUEN LONG AND NORTH LANTAU) - INVESTIGATION

Drawing title  
**LOCATIONS OF CONCERNED PATH GRIDS IN SO KWUN WAT, SIU LAM AND TAI LAM, TSING LUNG TAU AND NORTH LANTAU AREAS**

Drawing no. <b>FIGURE 3.1bv</b>		Rev. <b>C</b>	
Drawn GL	Date 08/23	Checked TL	Approved FC
Scale 1:10000 @ A3		Status PRELIMINARY	

COPYRIGHT RESERVED

**路政署**  
HIGHWAYS  
DEPARTMENT

