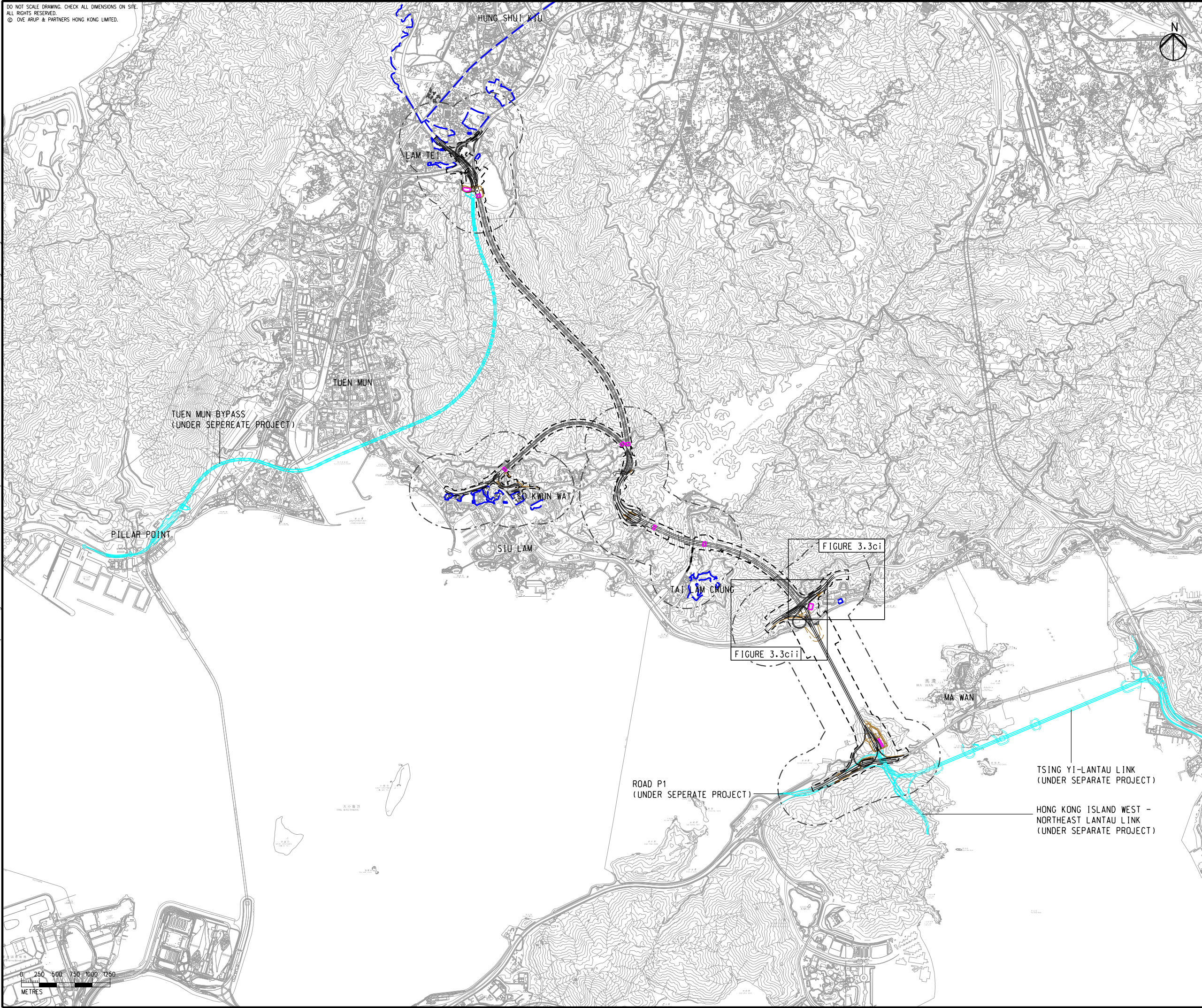


DO NOT SCALE DRAWING. CHECK ALL DIMENSIONS ON SITE.  
ALL RIGHTS RESERVED.  
© OVE ARUP & PARTNERS HONG KONG LIMITED.

EIA Report\Figure 3.3c - Locations of Representative Air Sensitive Receivers in Tsing Lung Tau.dgn

21/8/2023

Printed by : richard-kh.lau  
Filename :



- LEGEND**
- PROPOSED ELEVATED/ AT-GRADE ROAD
  - PROPOSED TUNNEL
  - HIGHWAY/ TUNNEL OPERATION AND MAINTENANCE FACILITIES
  - PROJECT ELEMENT
  - SITE BOUNDARY
  - 500m OPERATIONAL ASSESSMENT AREA
  - PLANNED ROAD NETWORK (UNDER SEPERATE PROJECT)
  - COMMITTED/PLANNED DEVELOPMENTS

C	THIRD ISSUE	GL	08/23
B	SECOND ISSUE	GL	06/23
A	FIRST ISSUE	GL	05/23
Rev	Description	By	Date

Consultant  
**ARUP**

Project Title  
**ROUTE 11  
(SECTION BETWEEN YUEN LONG AND NORTH LANTAU) - INVESTIGATION**

Drawing title  
**LOCATIONS OF REPRESENTATIVE AIR SENSITIVE RECEIVERS IN TSING LUNG TAU DURING OPERATIONAL PHASE**

Drawing no. <b>FIGURE 3.3c</b>		Rev. <b>C</b>	
Drawn GL	Date 08/23	Checked TL	Approved FC
Scale 1:50000 @ A3	Status PRELIMINARY		

COPYRIGHT RESERVED

**路政署  
HIGHWAYS  
DEPARTMENT**





DO NOT SCALE DRAWING. CHECK ALL DIMENSIONS ON-SITE.  
 ALL RIGHTS RESERVED.  
 © OVE ARUP & PARTNERS HONG KONG LIMITED.



- LEGEND**
- PROPOSED ELEVATED/ AT-GRADE ROAD
  - PROPOSED TUNNEL
  - HIGHWAY/ TUNNEL OPERATION AND MAINTENANCE FACILITIES
  - PROJECT ELEMENT
  - SITE BOUNDARY
  - 500m OPERATIONAL ASSESSMENT AREA
  - COMMITTED/PLANNED DEVELOPMENTS
  - EXISTING REPRESENTATIVE AIR SENSITIVE RECEIVERS
  - COMMITTED/PLANNED REPRESENTATIVE AIR SENSITIVE RECEIVERS

**NOTE:**  
 EXISTING PREMISES OR PLACE WITHIN THE SITE BOUNDARY TO BE RESUMED OR ALLOCATED ARE NOT CONSIDERED AS ASRS.

Rev	Description	By	Date
C	THIRD ISSUE	GL	08/23
B	SECOND ISSUE	GL	06/23
A	FIRST ISSUE	GL	05/23

Consultant

Project Title  
**ROUTE 11**  
 (SECTION BETWEEN YUEN LONG AND NORTH LANTAU) - INVESTIGATION

Drawing title  
**LOCATIONS OF REPRESENTATIVE AIR SENSITIVE RECEIVERS IN TSING LUNG TAU DURING OPERATIONAL PHASE**

Drawing no. <b>FIGURE 3.3ci</b>		Rev. <b>C</b>	
Drawn GL	Date 08/23	Checked TL	Approved FC
Scale 1:4000 @ A3		Status PRELIMINARY	

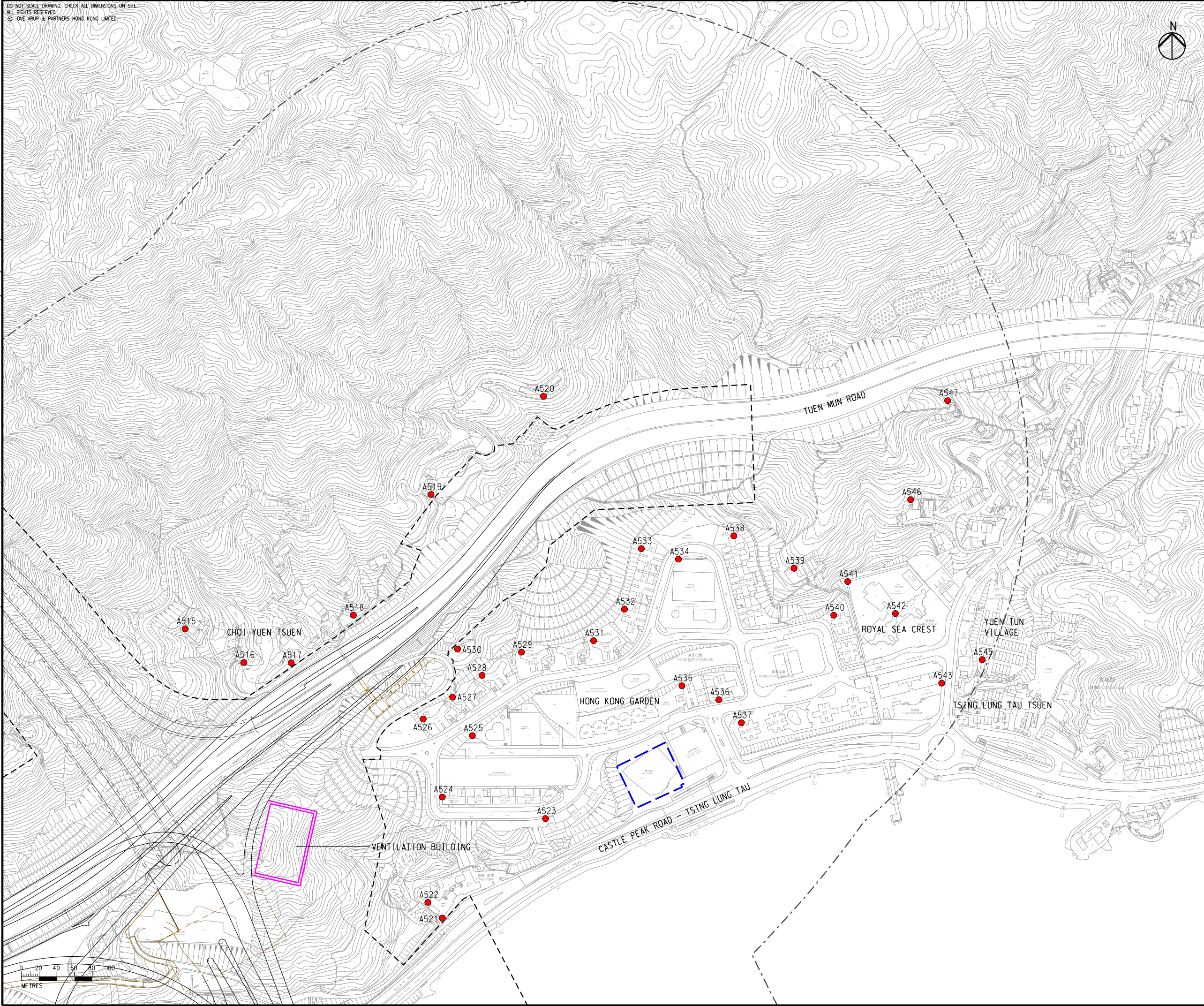
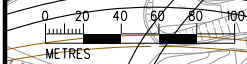
COPYRIGHT RESERVED



EIA Report\Figure 3.3ci - Locations of Representative Air Sensitive Receivers in Tsing Lung Tau.dgn

21/8/2023

Printed by : richard-kh.lau  
 Filename :



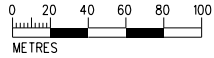
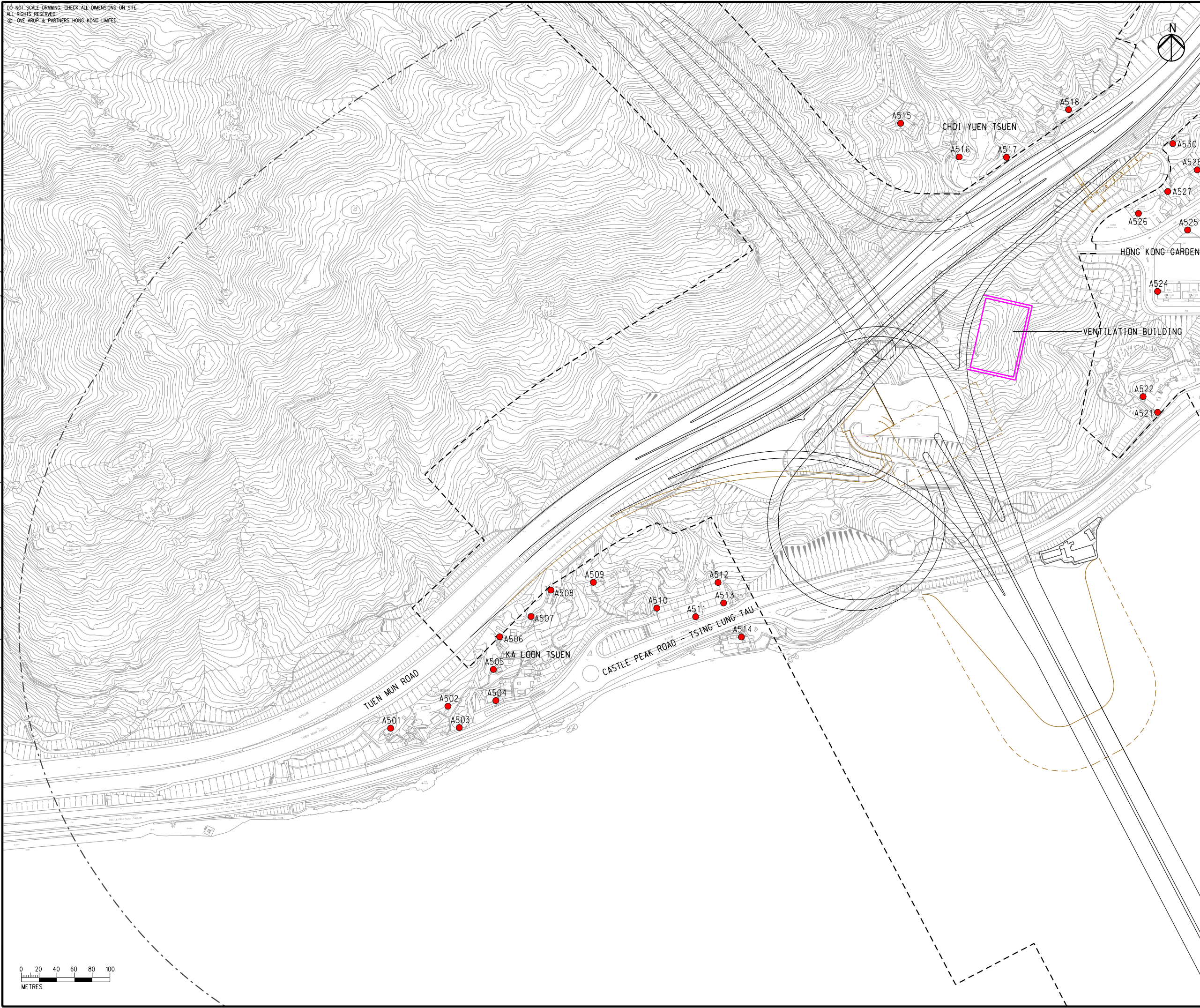


DO NOT SCALE DRAWING. CHECK ALL DIMENSIONS ON SITE.  
 ALL RIGHTS RESERVED.  
 © OVE ARUP & PARTNERS HONG KONG LIMITED.

EIA Report\Figure 3.3cii - Locations of Representative Air Sensitive Receivers in Tsing Lung Tau.dgn

21/8/2023

Printed by : richard-kh.lau  
 Filename :



- LEGEND**
- PROPOSED ELEVATED/ AT-GRADE ROAD
  - PROPOSED TUNNEL
  - HIGHWAY/ TUNNEL OPERATION AND MAINTENANCE FACILITIES
  - PROJECT ELEMENT
  - SITE BOUNDARY
  - 500m OPERATIONAL ASSESSMENT AREA
  - COMMITTED/PLANNED DEVELOPMENTS
  - EXISTING REPRESENTATIVE AIR SENSITIVE RECEIVERS
  - COMMITTED/PLANNED REPRESENTATIVE AIR SENSITIVE RECEIVERS

**NOTE:**  
 EXISTING PREMISES OR PLACE WITHIN THE SITE BOUNDARY TO BE RESUMED OR ALLOCATED ARE NOT CONSIDERED AS ASRS.

Rev	Description	By	Date
C	THIRD ISSUE	GL	08/23
B	SECOND ISSUE	GL	06/23
A	FIRST ISSUE	GL	05/23

Consultant

Project Title  
**ROUTE 11**  
 (SECTION BETWEEN YUEN LONG AND NORTH LANTAU) - INVESTIGATION

Drawing title  
**LOCATIONS OF REPRESENTATIVE AIR SENSITIVE RECEIVERS IN TSING LUNG TAU DURING OPERATIONAL PHASE**

Drawing no. <b>FIGURE 3.3cii</b>		Rev. <b>C</b>	
Drawn GL	Date 08/23	Checked TL	Approved FC
Scale 1:4000 @ A3		Status PRELIMINARY	

COPYRIGHT RESERVED  
  
**路政署**  
**HIGHWAYS DEPARTMENT**