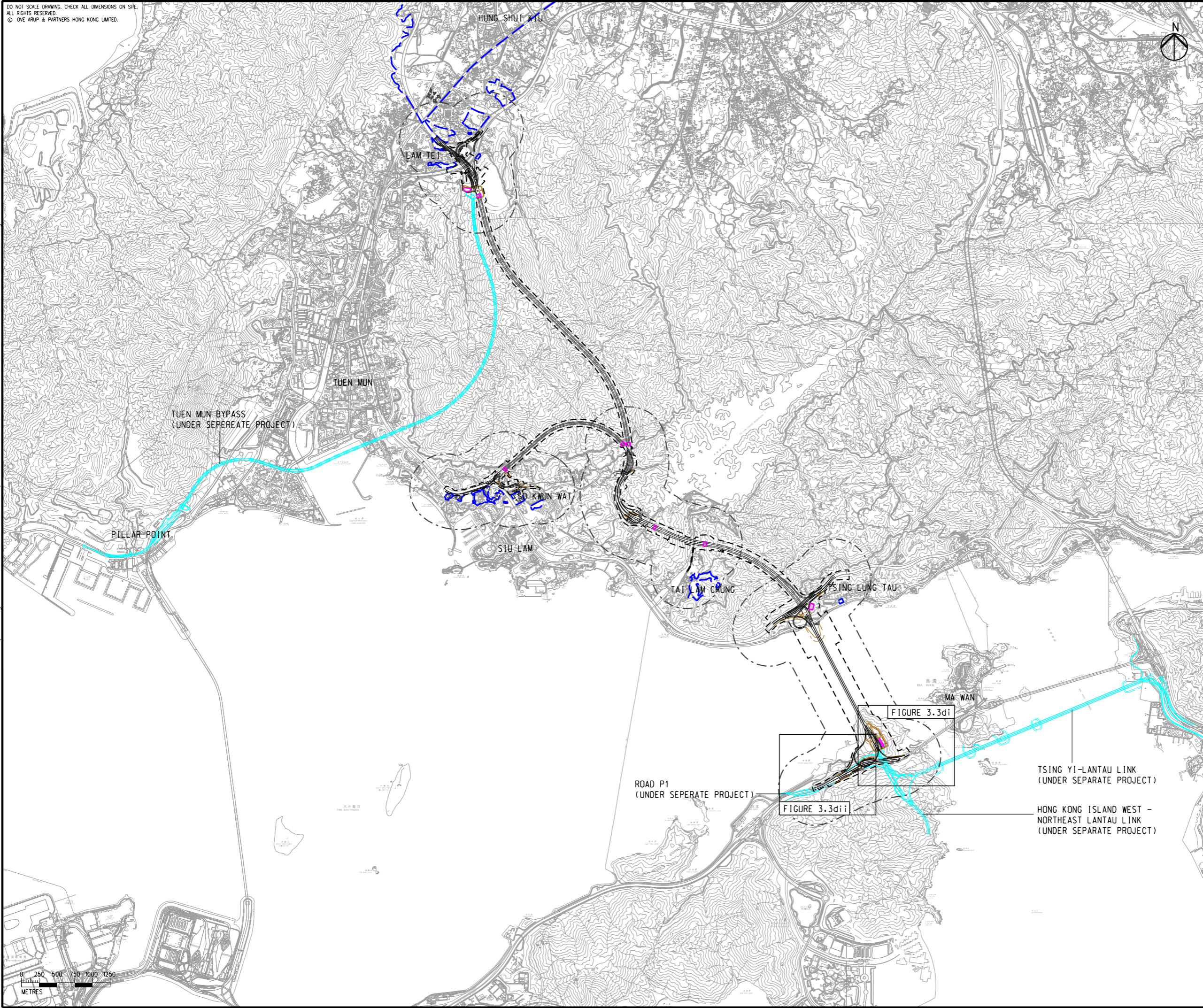


DO NOT SCALE DRAWING. CHECK ALL DIMENSIONS ON SITE.
ALL RIGHTS RESERVED.
© OVE ARUP & PARTNERS HONG KONG LIMITED.

EIA Report\Figure 3.3d - Locations of Representative Air Sensitive Receivers in North Lantau Areas.dgn

21/8/2023

Printed by : richard-kh.lau
Filename :



LEGEND

- PROPOSED ELEVATED/ AT-GRADE ROAD
- PROPOSED TUNNEL
- HIGHWAY/ TUNNEL OPERATION AND MAINTENANCE FACILITIES
- PROJECT ELEMENT
- SITE BOUNDARY
- 500m OPERATIONAL ASSESSMENT AREA
- PLANNED ROAD NETWORK (UNDER SEPERATE PROJECT)
- COMMITTED/PLANNED DEVELOPMENTS

Rev	Description	By	Date
C	THIRD ISSUE	GL	08/23
B	SECOND ISSUE	GL	06/23
A	FIRST ISSUE	GL	05/23

Consultant
ARUP

Project Title
**ROUTE 11
(SECTION BETWEEN YUEN LONG
AND NORTH LANTAU) -
INVESTIGATION**

Drawing title
**LOCATIONS OF REPRESENTATIVE
AIR SENSITIVE RECEIVERS
IN NORTH LANTAU AREAS
DURING OPERATIONAL PHASE**

Drawing no. FIGURE 3.3d		Rev. C	
Drawn GL	Date 08/23	Checked TL	Approved FC
Scale 1:50000 @ A3		Status PRELIMINARY	

COPYRIGHT RESERVED

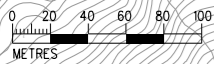
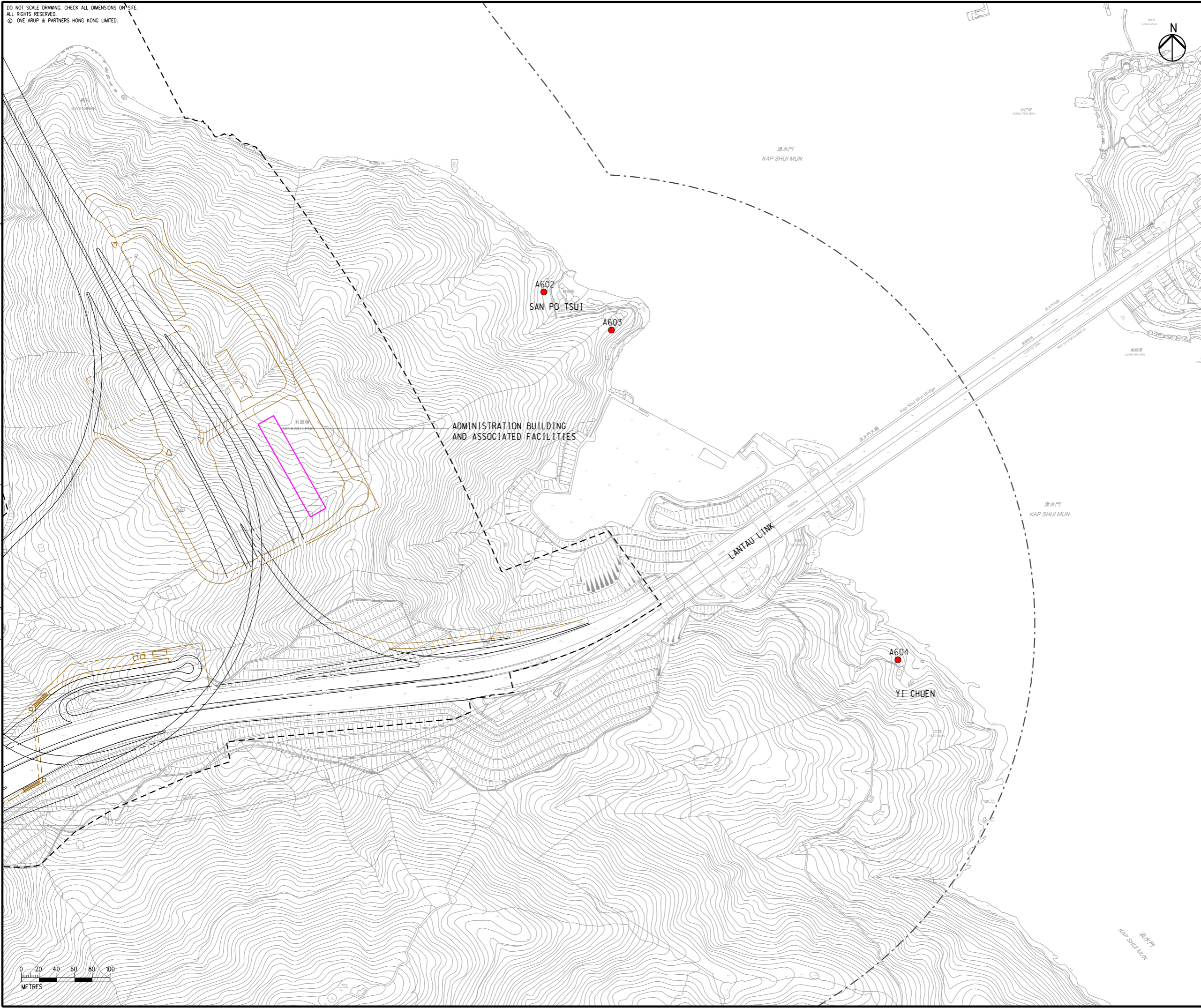
**路政署
HIGHWAYS
DEPARTMENT**

DO NOT SCALE DRAWING. CHECK ALL DIMENSIONS ON SITE.
 ALL RIGHTS RESERVED.
 © OVE ARUP & PARTNERS HONG KONG LIMITED.

EIA Report\Figure 3.3di - Locations of Representative Air Sensitive Receivers in North Lantau Areas.dgn

21/8/2023

Printed by : richard-kh.lau
 Filename :



- LEGEND**
- PROPOSED ELEVATED/ AT-GRADE ROAD
 - PROPOSED TUNNEL
 - HIGHWAY/ TUNNEL OPERATION AND MAINTENANCE FACILITIES
 - PROJECT ELEMENT
 - SITE BOUNDARY
 - 500m OPERATIONAL ASSESSMENT AREA
 - COMMITTED/PLANNED DEVELOPMENTS
 - EXISTING REPRESENTATIVE AIR SENSITIVE RECEIVERS
 - COMMITTED/PLANNED REPRESENTATIVE AIR SENSITIVE RECEIVERS

NOTE:
 EXISTING PREMISES OR PLACE WITHIN THE SITE BOUNDARY TO BE RESUMED OR ALLOCATED ARE NOT CONSIDERED AS ASRS.

Rev	Description	By	Date
C	THIRD ISSUE	GL	08/23
B	SECOND ISSUE	GL	06/23
A	FIRST ISSUE	GL	05/23

Consultant
ARUP

Project Title
ROUTE 11
 (SECTION BETWEEN YUEN LONG AND NORTH LANTAU) - INVESTIGATION

Drawing title
LOCATIONS OF REPRESENTATIVE AIR SENSITIVE RECEIVERS IN NORTH LANTAU AREAS DURING OPERATIONAL PHASE

Drawing no. FIGURE 3.3di		Rev. C	
Drawn GL	Date 08/23	Checked TL	Approved FC
Scale 1:4000 @ A3		Status PRELIMINARY	

COPYRIGHT RESERVED

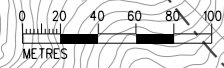
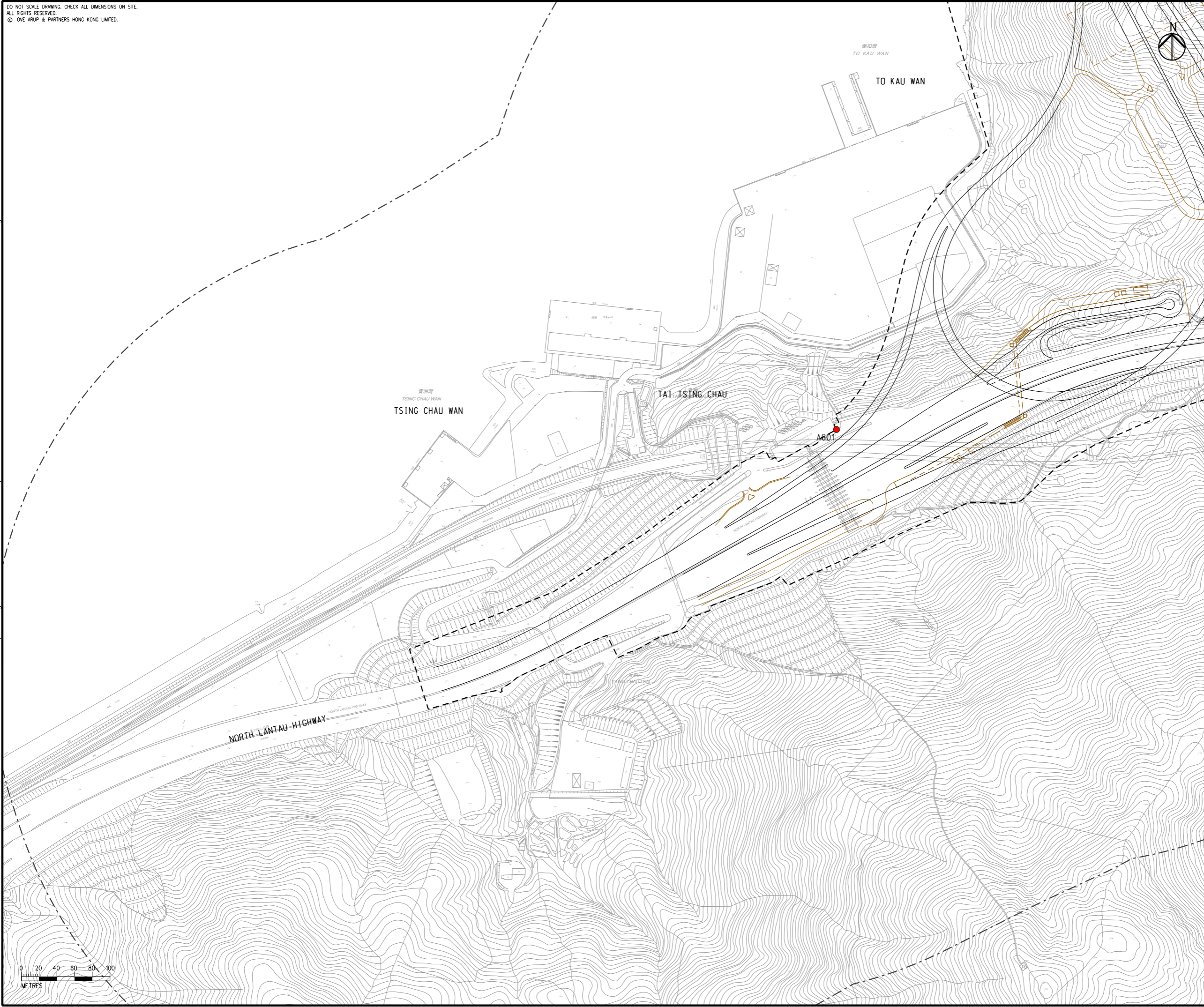
路政署
HIGHWAYS
DEPARTMENT

DO NOT SCALE DRAWING. CHECK ALL DIMENSIONS ON SITE.
 ALL RIGHTS RESERVED.
 © OVE ARUP & PARTNERS HONG KONG LIMITED.

EIA Report\Figure 3.3dii - Locations of Representative Air Sensitive Receivers in North Lantau Areas.dgn

21/8/2023

Printed by : richard-kh.lau
 Filename :



LEGEND

- PROPOSED ELEVATED/ AT-GRADE ROAD
- PROPOSED TUNNEL
- HIGHWAY/ TUNNEL OPERATION AND MAINTENANCE FACILITIES
- PROJECT ELEMENT
- SITE BOUNDARY
- 500m OPERATIONAL ASSESSMENT AREA
- COMMITTED/PLANNED DEVELOPMENTS
- EXISTING REPRESENTATIVE AIR SENSITIVE RECEIVERS
- COMMITTED/PLANNED REPRESENTATIVE AIR SENSITIVE RECEIVERS

NOTE:
 EXISTING PREMISES OR PLACE WITHIN THE SITE BOUNDARY TO BE RESUMED OR ALLOCATED ARE NOT CONSIDERED AS ASRS.

Rev	Description	By	Date
C	THIRD ISSUE	GL	08/23
B	SECOND ISSUE	GL	06/23
A	FIRST ISSUE	GL	05/23

Consultant
ARUP

Project Title
ROUTE 11
 (SECTION BETWEEN YUEN LONG AND NORTH LANTAU) - INVESTIGATION

Drawing title
LOCATIONS OF REPRESENTATIVE AIR SENSITIVE RECEIVERS IN NORTH LANTAU AREAS DURING OPERATIONAL PHASE

Drawing no. FIGURE 3.3dii		Rev. C	
Drawn GL	Date 08/23	Checked TL	Approved FC
Scale 1:4000 @ A3		Status PRELIMINARY	

COPYRIGHT RESERVED

路政署
HIGHWAYS
DEPARTMENT