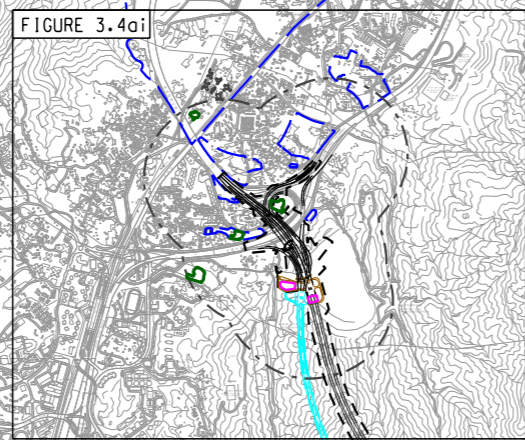
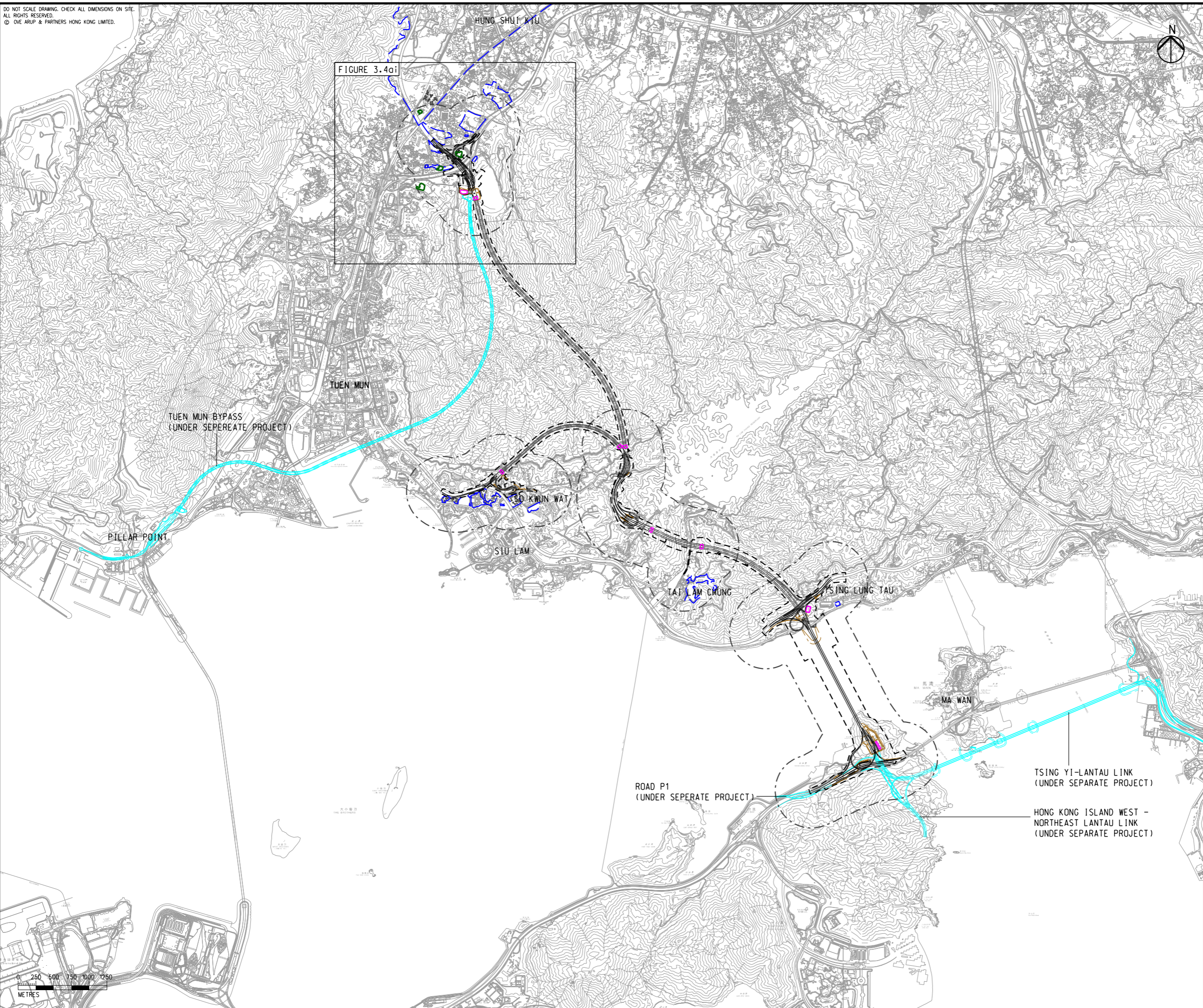


DO NOT SCALE DRAWING. CHECK ALL DIMENSIONS ON SITE.
ALL RIGHTS RESERVED.
© OVE ARUP & PARTNERS HONG KONG LIMITED.

EIA Report\Figure 3.4a - Locations of PTIs and Major Heavy Goods Vehicle Coach Parking in Lam Tei.dgn

25/8/2023

Printed by : richard-kh.lau
Filename :



- LEGEND**
- PROPOSED ELEVATED/ AT-GRADE ROAD
 - PROPOSED TUNNEL
 - HIGHWAY/ TUNNEL OPERATION AND MAINTENANCE FACILITIES
 - PROJECT ELEMENT
 - SITE BOUNDARY
 - 500m OPERATIONAL ASSESSMENT AREA
 - PLANNED ROAD NETWORK (UNDER SEPERATE PROJECTS)
 - COMMITTED/PLANNED DEVELOPMENTS
 - HEAVY GOODS VEHICLE/ COACH PARKING

C	THIRD ISSUE	GL	08/23
B	SECOND ISSUE	GL	06/23
A	FIRST ISSUE	GL	05/23
Rev	Description	By	Date

Consultant
ARUP

Project Title
**ROUTE 11
(SECTION BETWEEN YUEN LONG AND NORTH LANTAU) - INVESTIGATION**

Drawing title
LOCATIONS OF PTIs AND MAJOR HEAVY GOODS VEHICLE/ COACH PARKING IN LAM TEI

Drawing no.		Rev.	
FIGURE 3.4a		C	
Drawn	Date	Checked	Approved
GL	07/23	TL	FC
Scale	Status		PRELIMINARY
1:50000 @ A3			

COPYRIGHT RESERVED

**路政署
HIGHWAYS
DEPARTMENT**

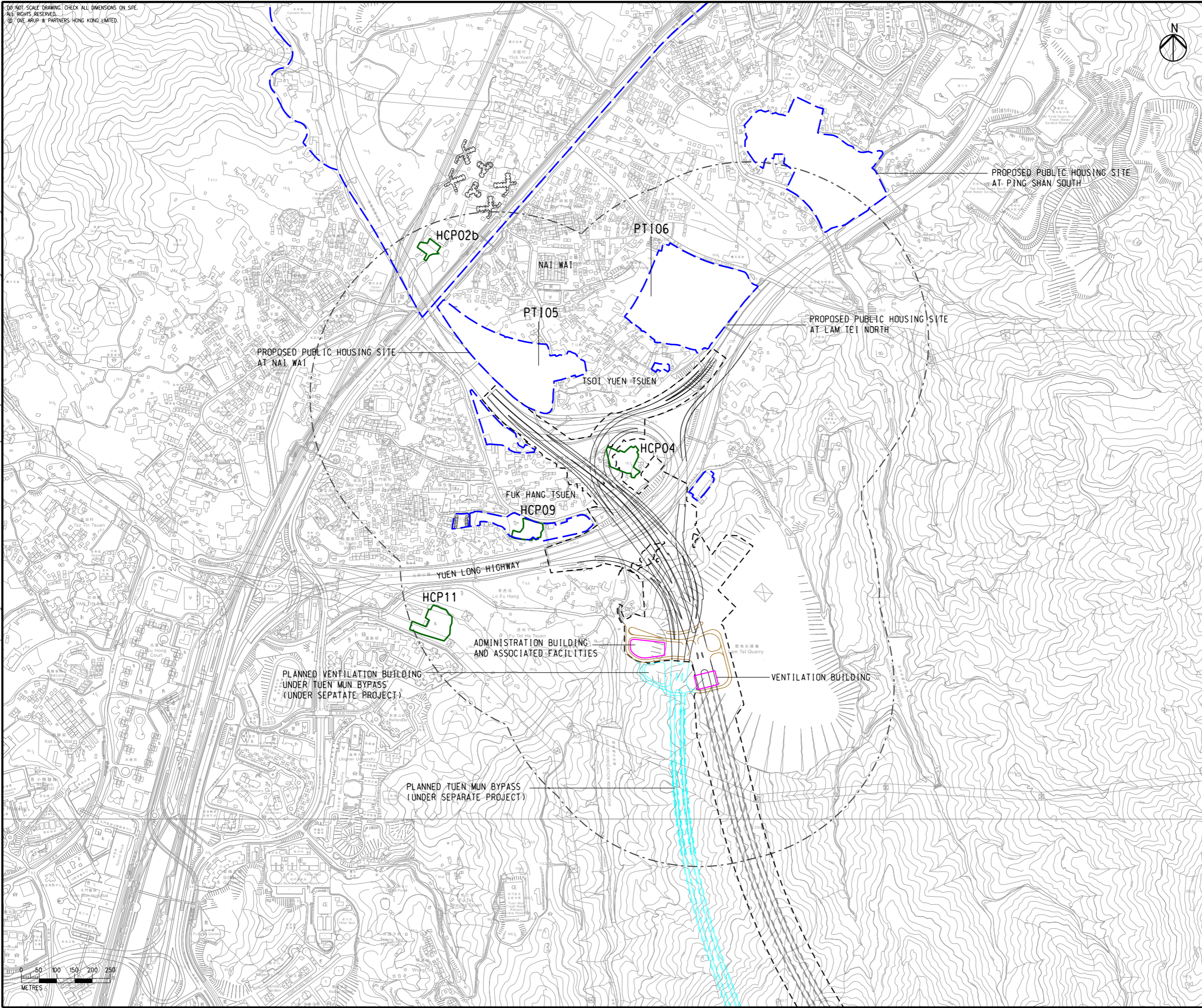


DO NOT SCALE DRAWING. CHECK ALL DIMENSIONS ON SITE.
ALL RIGHTS RESERVED.
© 2016 ARUP & PARTNERS HONG KONG LIMITED.

EIA Report\Figure 3.4ai - Locations of PTIs and Major Heavy Goods Vehicle Coach Parking in Lam Tei.dgn

25/8/2023

Printed by : richard-kh.lau
Filename :



- LEGEND**
- PROPOSED ELEVATED/ AT-GRADE ROAD
 - PROPOSED TUNNEL
 - HIGHWAY/ TUNNEL OPERATION AND MAINTENANCE FACILITIES
 - PROJECT ELEMENT
 - SITE BOUNDARY
 - 500m OPERATIONAL ASSESSMENT AREA
 - PLANNED TUEN MUN BYPASS (UNDER SEPARATE PROJECT)
 - COMMITTED/PLANNED DEVELOPMENTS
 - HEAVY GOODS VEHICLE/ COACH PARKING

Rev	Description	By	Date
C	THIRD ISSUE	GL	08/23
B	SECOND ISSUE	GL	06/23
A	FIRST ISSUE	GL	05/23

Consultant
ARUP

Project Title
**ROUTE 11
(SECTION BETWEEN YUEN LONG
AND NORTH LANTAU) -
INVESTIGATION**

Drawing title
**LOCATIONS OF PTIs AND
MAJOR HEAVY GOODS VEHICLE/
COACH PARKING IN LAM TEI**

Drawing no. FIGURE 3.4ai		Rev. C	
Drawn GL	Date 08/23	Checked TL	Approved FC
Scale 1:10000 @ A3		Status PRELIMINARY	

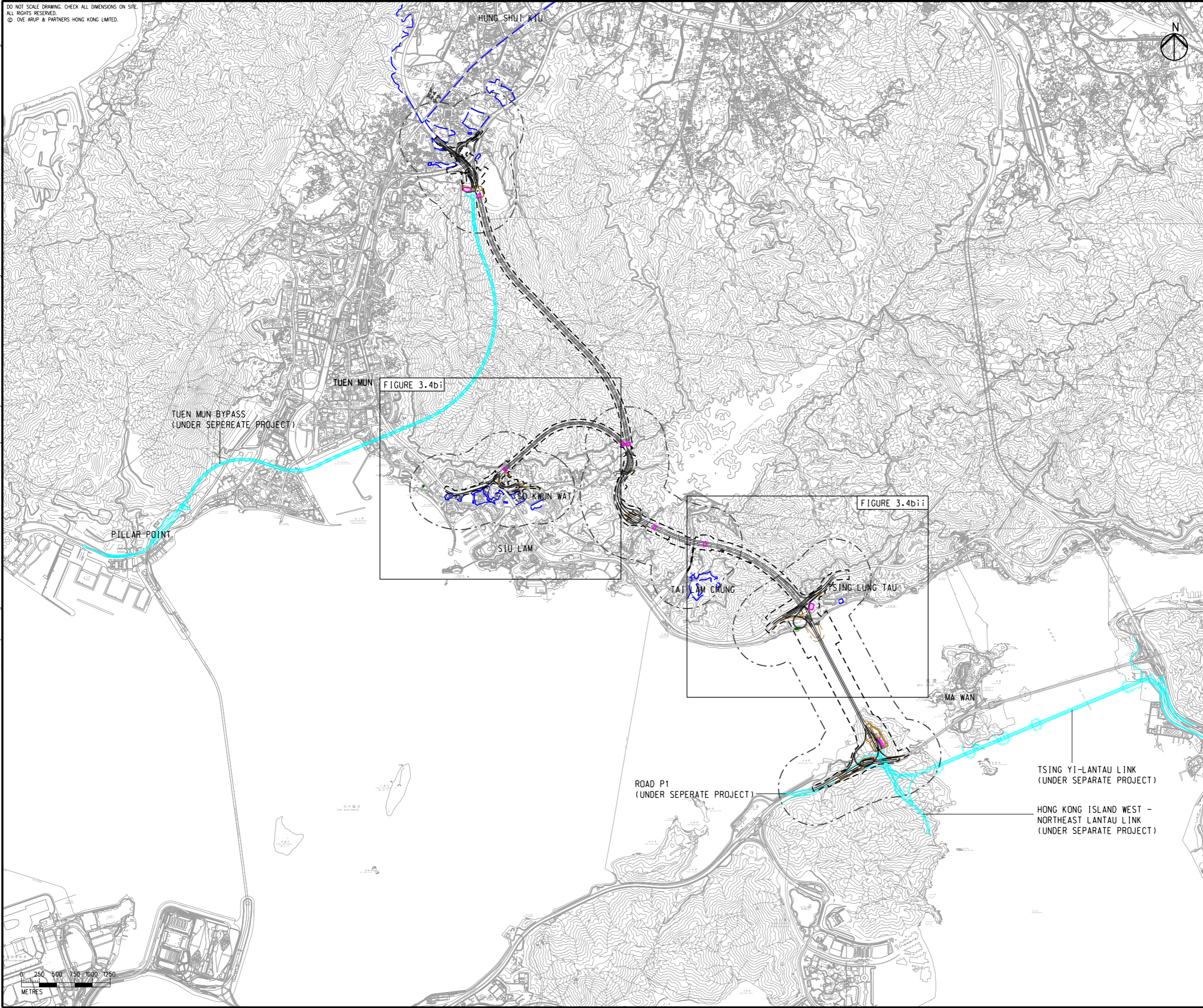


DO NOT SCALE DRAWING. CHECK ALL DIMENSIONS ON SITE.
ALL RIGHTS RESERVED.
© OVE ARUP & PARTNERS HONG KONG LIMITED.

EIA Report\Figure 3.4b - Locations of PTIs and Major Heavy Goods Vehicle Coach Parking in SKW, SL and TL, TLT and North Lantau Areas.dgn

25/8/2023

Printed by : richard-kh.lau
Filename :



- LEGEND**
- PROPOSED ELEVATED/ AT-GRADE ROAD
 - PROPOSED TUNNEL
 - HIGHWAY/ TUNNEL OPERATION AND MAINTENANCE FACILITIES
 - PROJECT ELEMENT
 - SITE BOUNDARY
 - 500m OPERATIONAL ASSESSMENT AREA
 - PLANNED ROAD NETWORK (UNDER SEPERATE PROJECTS)
 - COMMITTED/PLANNED DEVELOPMENTS
 - HEAVY GOODS VEHICLE/ COACH PARKING

C	THIRD ISSUE	GL	08/23
B	SECOND ISSUE	GL	06/23
A	FIRST ISSUE	GL	05/23
Rev	Description	By	Date

Consultant
ARUP

Project Title
**ROUTE 11
(SECTION BETWEEN YUEN LONG AND NORTH LANTAU) - INVESTIGATION**

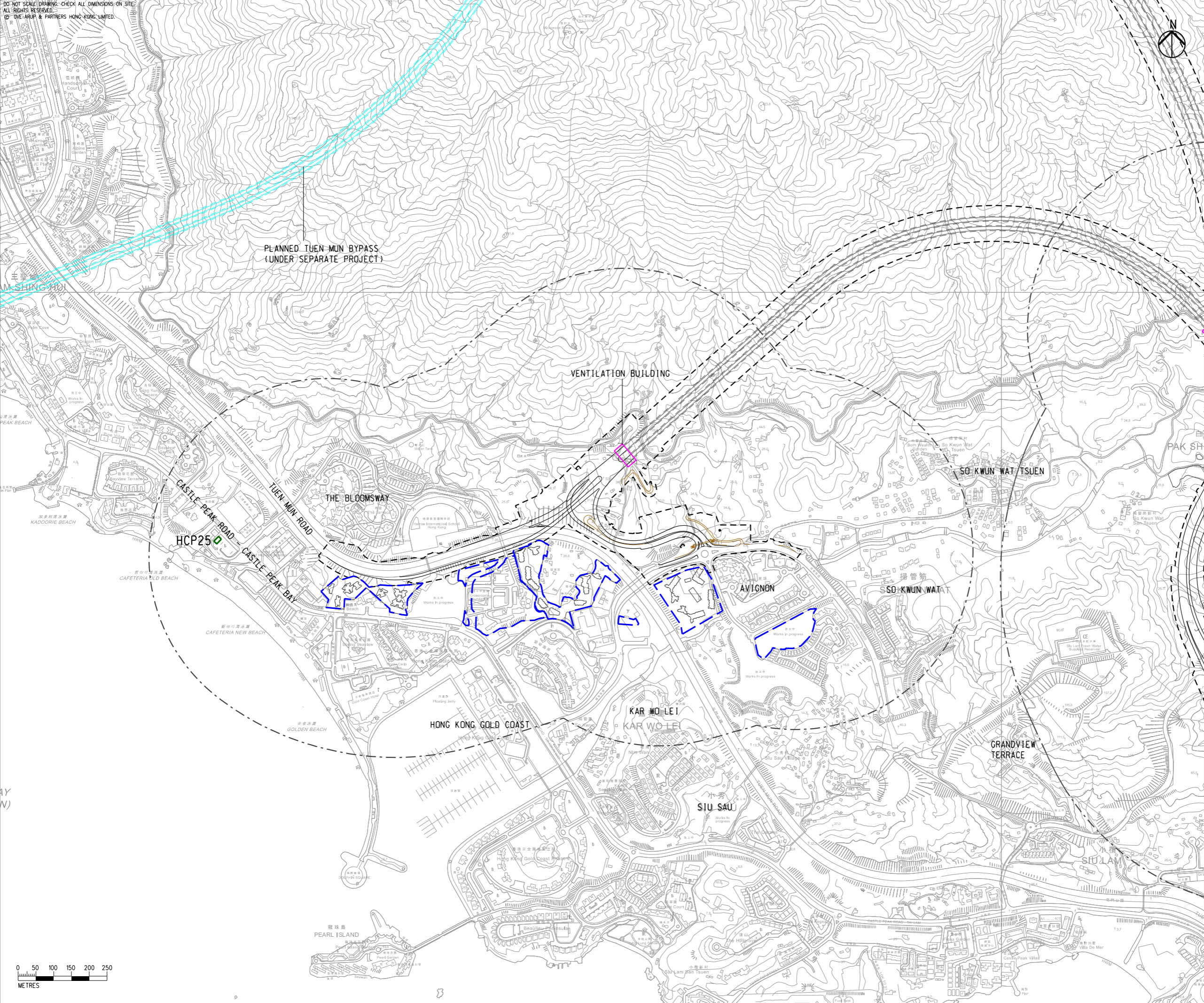
Drawing title
LOCATIONS OF PTIs AND MAJOR HEAVY GOODS VEHICLE/ COACH PARKING IN SO KWUN WAT, SIU LAM AND TAI LAM, TSING LUNG TAU AND NORTH LANTAU AREAS

Drawing no. FIGURE 3.4b		Rev. C	
Drawn GL	Date 08/23	Checked TL	Approved FC
Scale 1:50000 @ A3	Status PRELIMINARY		

COPYRIGHT RESERVED

**路政署
HIGHWAYS
DEPARTMENT**





- LEGEND**
- PROPOSED ELEVATED/ AT-GRADE ROAD
 - PROPOSED TUNNEL
 - HIGHWAY/ TUNNEL OPERATION AND MAINTENANCE FACILITIES
 - PROJECT ELEMENT
 - SITE BOUNDARY
 - 500m OPERATIONAL ASSESSMENT AREA
 - PLANNED TUEN MUN BYPASS (UNDER SEPARATE PROJECT)
 - COMMITTED/PLANNED DEVELOPMENTS
 - HEAVY GOODS VEHICLE/ COACH PARKING

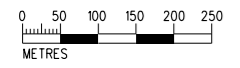
C	THIRD ISSUE	GL	08/23
B	SECOND ISSUE	GL	06/23
A	FIRST ISSUE	GL	05/23
Rev	Description	By	Date

Consultant **ARUP**

Project Title
**ROUTE 11
 (SECTION BETWEEN YUEN LONG
 AND NORTH LANTAU) -
 INVESTIGATION**

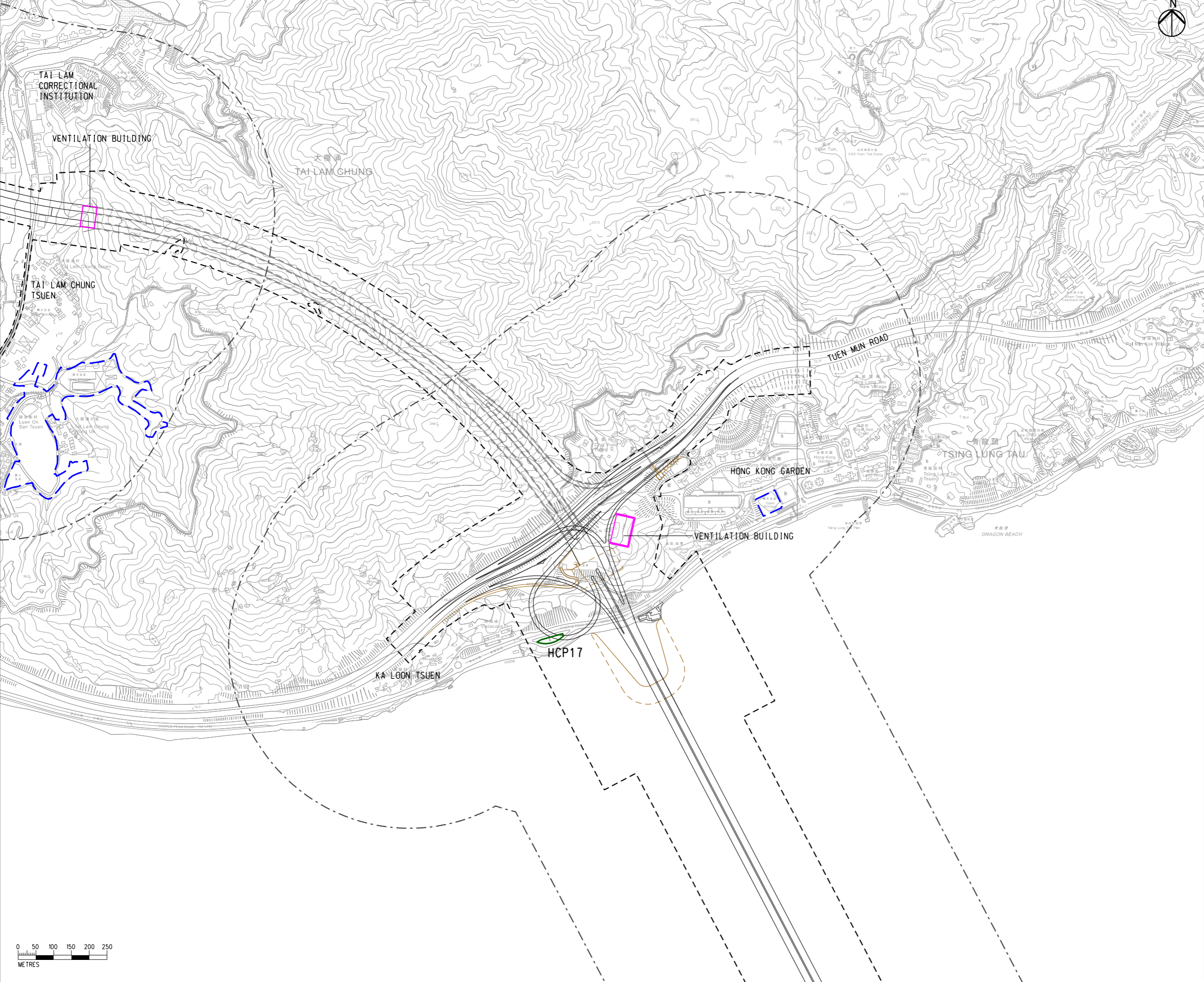
Drawing title
**LOCATIONS OF PTIs AND MAJOR
 HEAVY GOODS VEHICLE/ COACH
 PARKING IN SO KWUN WAT, SIU
 LAM AND TAI LAM, TSING LUNG
 TAU AND NORTH LANTAU AREAS**

Drawing no. FIGURE 3.4bi		Rev. C	
Drawn GL	Date 08/23	Checked TL	Approved FC
Scale 1:10000 @ A3		Status PRELIMINARY	



EIA Report\Figure 3.4bii - Locations of PTIs and Major Heavy Goods Vehicle Coach Parking in SKW, SL and TL, TLT and North Lantau Areas.dgn

DO NOT SCALE DRAWING. CHECK ALL DIMENSIONS ON SITE.
ALL RIGHTS RESERVED.
© 2023 ARUP & PARTNERS HONG KONG LIMITED.



LEGEND

- PROPOSED ELEVATED/ AT-GRADE ROAD
- PROPOSED TUNNEL
- HIGHWAY/ TUNNEL OPERATION AND MAINTENANCE FACILITIES
- PROJECT ELEMENT
- SITE BOUNDARY
- 500m OPERATIONAL ASSESSMENT AREA
- COMMITTED/PLANNED DEVELOPMENTS
- HEAVY GOODS VEHICLE/ COACH PARKING

Rev	Description	By	Date
C	THIRD ISSUE	GL	08/23
B	SECOND ISSUE	GL	06/23
A	FIRST ISSUE	GL	05/23

Consultant
ARUP

Project Title
**ROUTE 11
(SECTION BETWEEN YUEN LONG
AND NORTH LANTAU) -
INVESTIGATION**

Drawing title
**LOCATIONS OF PTIs AND MAJOR
HEAVY GOODS VEHICLE/ COACH
PARKING IN SO KWUN WAT, SIU
LAM AND TAI LAM, TSING LUNG
TAU AND NORTH LANTAU AREAS**

Drawing no. FIGURE 3.4bii		Rev. C	
Drawn GL	Date 08/23	Checked TL	Approved FC
Scale 1:10000 @ A3		Status PRELIMINARY	

COPYRIGHT RESERVED

**路政署
HIGHWAYS
DEPARTMENT**

Printed by : richard-kh.lau
Filename :