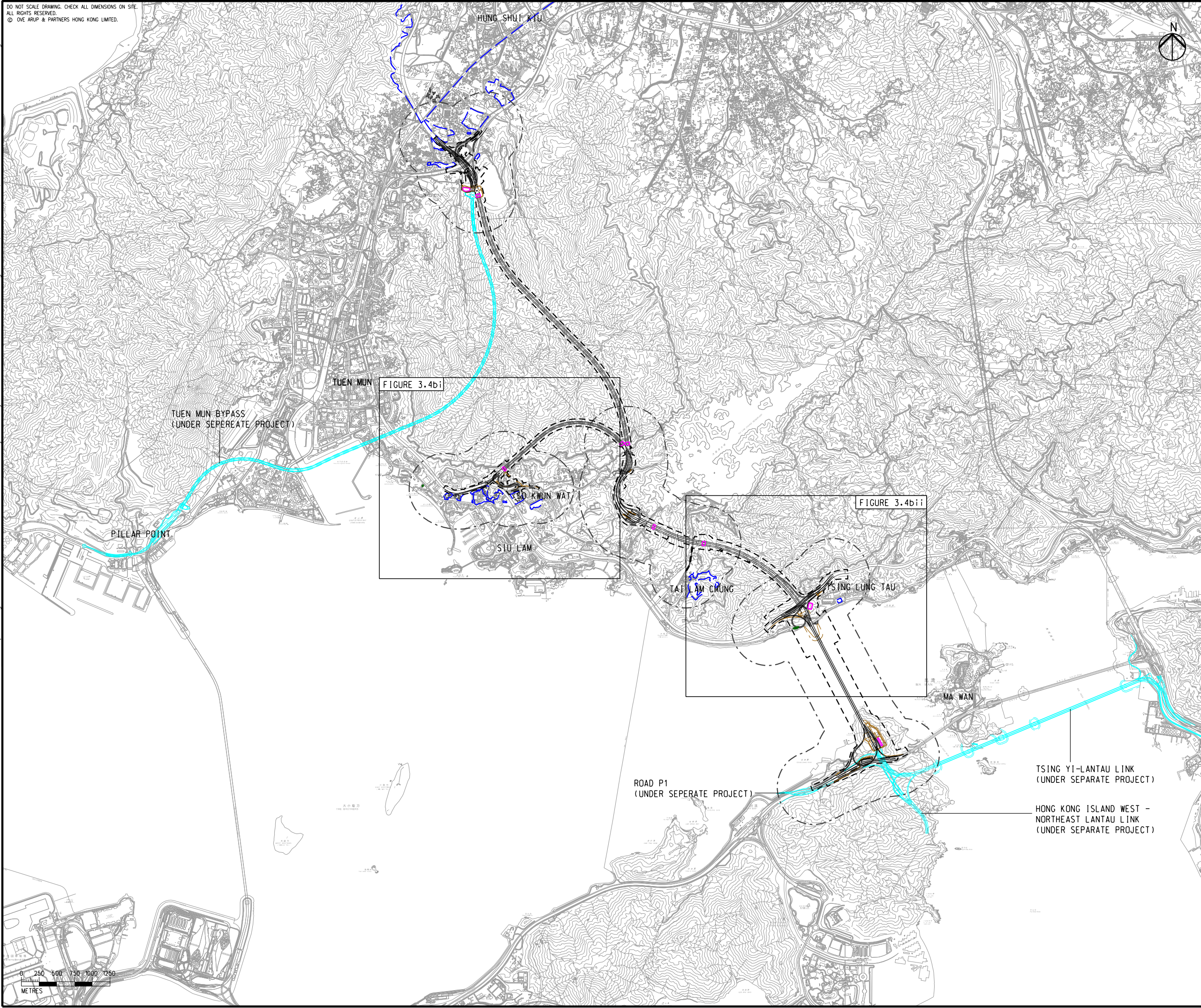


DO NOT SCALE DRAWING. CHECK ALL DIMENSIONS ON SITE.  
ALL RIGHTS RESERVED.  
© OVE ARUP & PARTNERS HONG KONG LIMITED.

EIA Report\Figure 3.4b - Locations of PTIs and Major Heavy Goods Vehicle Coach Parking in SKW, SL and TL, TLT and North Lantau Areas.dgn

25/8/2023

Printed by : richard-kh.lau  
Filename :



- LEGEND**
- PROPOSED ELEVATED/ AT-GRADE ROAD
  - PROPOSED TUNNEL
  - HIGHWAY/ TUNNEL OPERATION AND MAINTENANCE FACILITIES
  - PROJECT ELEMENT
  - SITE BOUNDARY
  - 500m OPERATIONAL ASSESSMENT AREA
  - PLANNED ROAD NETWORK (UNDER SEPERATE PROJECTS)
  - COMMITTED/PLANNED DEVELOPMENTS
  - HEAVY GOODS VEHICLE/ COACH PARKING

Rev	Description	By	Date
C	THIRD ISSUE	GL	08/23
B	SECOND ISSUE	GL	06/23
A	FIRST ISSUE	GL	05/23

Consultant  
**ARUP**

Project Title  
**ROUTE 11  
(SECTION BETWEEN YUEN LONG AND NORTH LANTAU) - INVESTIGATION**

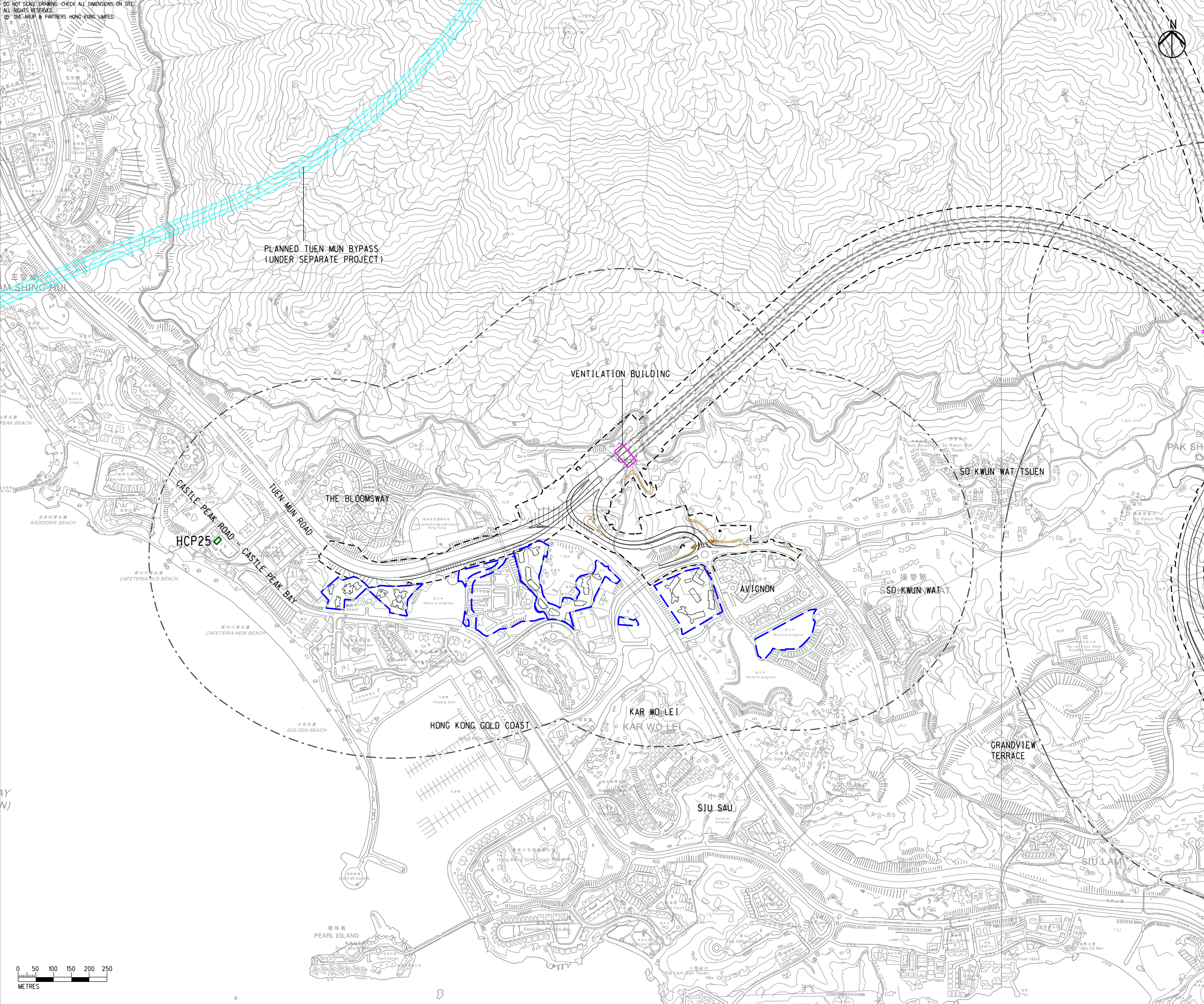
Drawing title  
**LOCATIONS OF PTIs AND MAJOR HEAVY GOODS VEHICLE/ COACH PARKING IN SO KWUN WAT, SIU LAM AND TAI LAM, TSING LUNG TAU AND NORTH LANTAU AREAS**

Drawing no. <b>FIGURE 3.4b</b>		Rev. <b>C</b>	
Drawn GL	Date 08/23	Checked TL	Approved FC
Scale 1:50000 @ A3		Status PRELIMINARY	

COPYRIGHT RESERVED  
**路政署  
HIGHWAYS  
DEPARTMENT**







- LEGEND**
- PROPOSED ELEVATED/ AT-GRADE ROAD
  - PROPOSED TUNNEL
  - HIGHWAY/ TUNNEL OPERATION AND MAINTENANCE FACILITIES
  - PROJECT ELEMENT
  - SITE BOUNDARY
  - 500m OPERATIONAL ASSESSMENT AREA
  - PLANNED TUEN MUN BYPASS (UNDER SEPARATE PROJECT)
  - COMMITTED/PLANNED DEVELOPMENTS
  - HEAVY GOODS VEHICLE/ COACH PARKING

C	THIRD ISSUE	GL	08/23
B	SECOND ISSUE	GL	06/23
A	FIRST ISSUE	GL	05/23
Rev	Description	By	Date

Consultant

ARUP

Project Title

**ROUTE 11**  
(SECTION BETWEEN YUEN LONG AND NORTH LANTAU) - INVESTIGATION

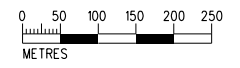
Drawing title

**LOCATIONS OF PTIs AND MAJOR HEAVY GOODS VEHICLE/ COACH PARKING IN SO KWUN WAT, SIU LAM AND TAI LAM, TSING LUNG TAU AND NORTH LANTAU AREAS**

Drawing no.		Rev.	
FIGURE 3.4bi		C	
Drawn	Date	Checked	Approved
GL	08/23	TL	FC
Scale	Status		PRELIMINARY
1:10000 @ A3			

COPYRIGHT RESERVED

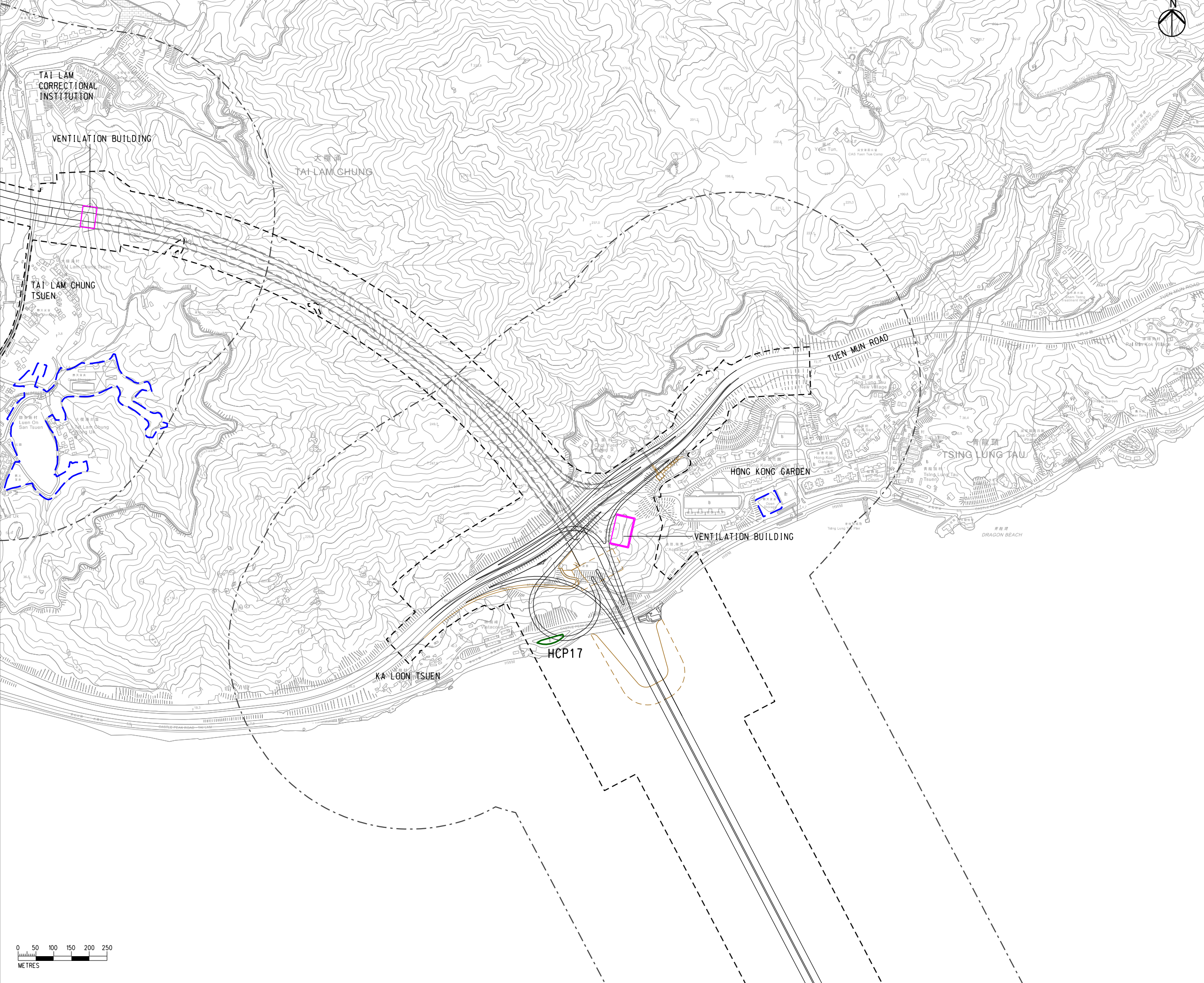
**路政署**  
**HIGHWAYS**  
**DEPARTMENT**





EIA Report\Figure 3.4bii - Locations of PTIs and Major Heavy Goods Vehicle Coach Parking in SKW, SL and TL, TLT and North Lantau Areas.dgn

DO NOT SCALE DRAWING. CHECK ALL DIMENSIONS ON SITE.  
ALL RIGHTS RESERVED.  
© 2023 ARUP & PARTNERS HONG KONG LIMITED.



**LEGEND**

- PROPOSED ELEVATED/ AT-GRADE ROAD
- PROPOSED TUNNEL
- HEAVY GOODS VEHICLE/ TUNNEL OPERATION AND MAINTENANCE FACILITIES
- PROJECT ELEMENT
- SITE BOUNDARY
- 500m OPERATIONAL ASSESSMENT AREA
- COMMITTED/PLANNED DEVELOPMENTS
- HEAVY GOODS VEHICLE/ COACH PARKING



C	THIRD ISSUE	GL	08/23
B	SECOND ISSUE	GL	06/23
A	FIRST ISSUE	GL	05/23
Rev	Description	By	Date

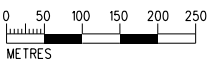
Consultant  
**ARUP**

Project Title  
**ROUTE 11  
(SECTION BETWEEN YUEN LONG  
AND NORTH LANTAU) -  
INVESTIGATION**

Drawing title  
**LOCATIONS OF PTIs AND MAJOR  
HEAVY GOODS VEHICLE/ COACH  
PARKING IN SO KWUN WAT, SIU  
LAM AND TAI LAM, TSING LUNG  
TAU AND NORTH LANTAU AREAS**

Drawing no. <b>FIGURE 3.4bii</b>		Rev. <b>C</b>	
Drawn GL	Date 08/23	Checked TL	Approved FC
Scale 1:10000 @ A3		Status PRELIMINARY	

COPYRIGHT RESERVED



Printed by : richard-kh.lau  
Filename :