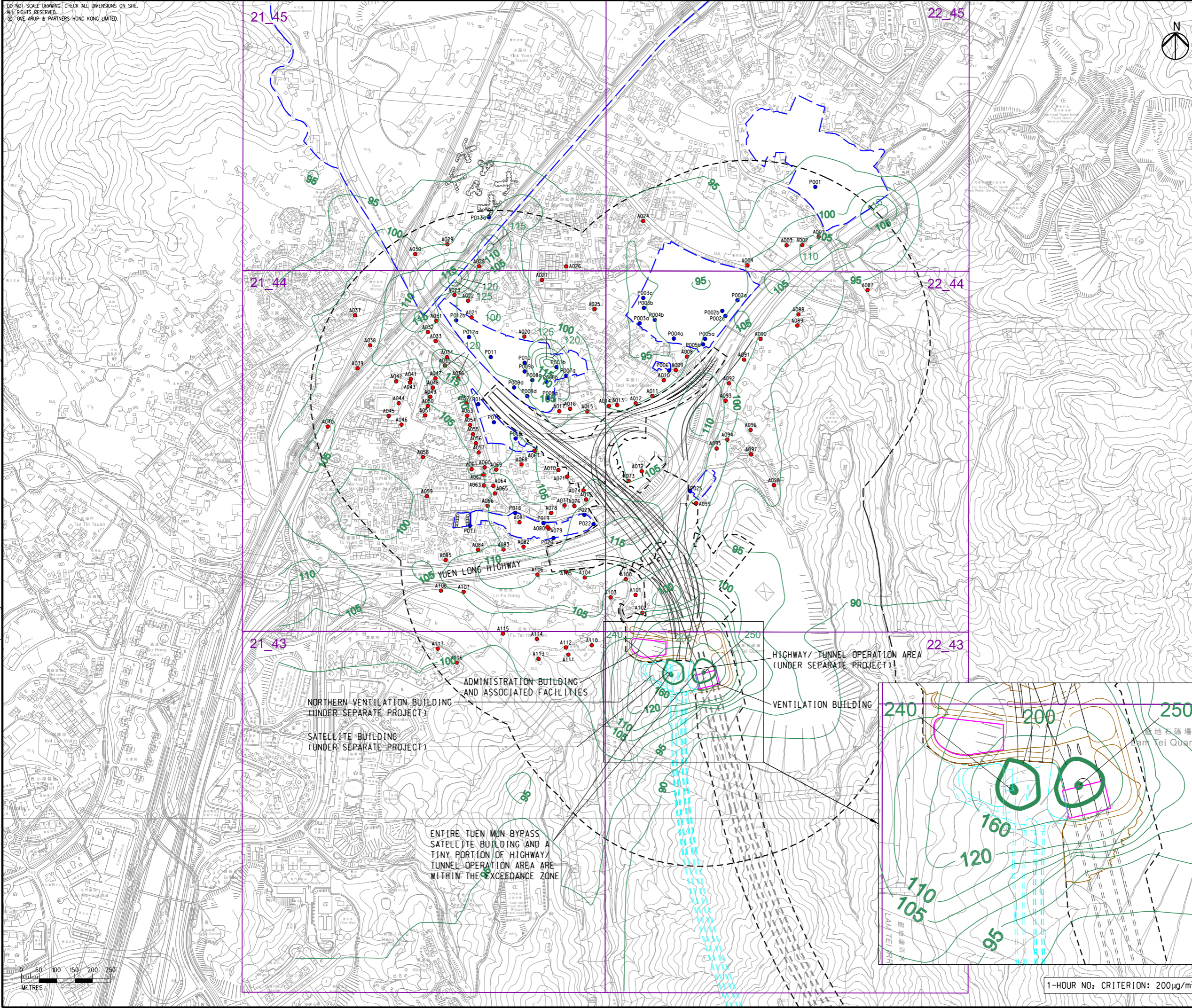


DO NOT SCALE DRAWING. CHECK ALL DIMENSIONS ON SITE.
 ALL RIGHTS RESERVED.
 © ARUP & PARTNERS HONG KONG LIMITED.

IIA Report\Figure 3.6a - Contours 1hr NO2 (Year 2048) in Lam Tei.dgn

23/8/2023

Printed by : richard-kh.lau
 Filename :



- LEGEND**
- PROPOSED ELEVATED/ AT-GRADE ROAD
 - PROPOSED TUNNEL
 - HIGHWAY/ TUNNEL OPERATION AND MAINTENANCE FACILITIES
 - PROJECT ELEMENT
 - SITE BOUNDARY
 - 500m OPERATIONAL ASSESSMENT AREA
 - PLANNED TUEN MUN BYPASS (UNDER SEPARATE PROJECT)
 - COMMITTED/PLANNED DEVELOPMENTS
 - CONCERNED PATH GRID
 - EXISTING REPRESENTATIVE AIR SENSITIVE RECEIVERS
 - COMMITTED/PLANNED REPRESENTATIVE AIR SENSITIVE RECEIVERS
 - 200— NO₂ CONTOUR, µg/m³

C	THIRD ISSUE	GL	08/23
B	SECOND ISSUE	GL	07/23
A	FIRST ISSUE	GL	06/23
Rev	Description	By	Date

Consultant
ARUP

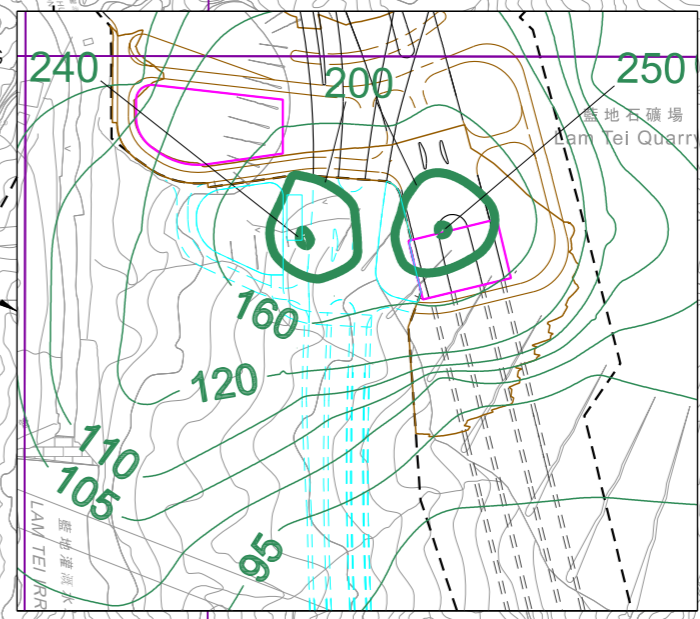
Project Title
ROUTE 11
 (SECTION BETWEEN YUEN LONG AND NORTH LANTAU) - INVESTIGATION

Drawing title
CONTOURS OF CUMULATIVE 19th HIGHEST 1-HOUR NO₂ CONCENTRATION AT 1.5m ABOVE GROUND (YEAR 2048) IN LAM TEI

Drawing no. FIGURE 3.6a		Rev. C	
Drawn GL	Date 08/23	Checked TL	Approved FC
Scale 1:10000 @ A3		Status PRELIMINARY	

COPYRIGHT RESERVED

路政署
HIGHWAYS
DEPARTMENT



1-HOUR NO₂ CRITERION: 200 µg/m³