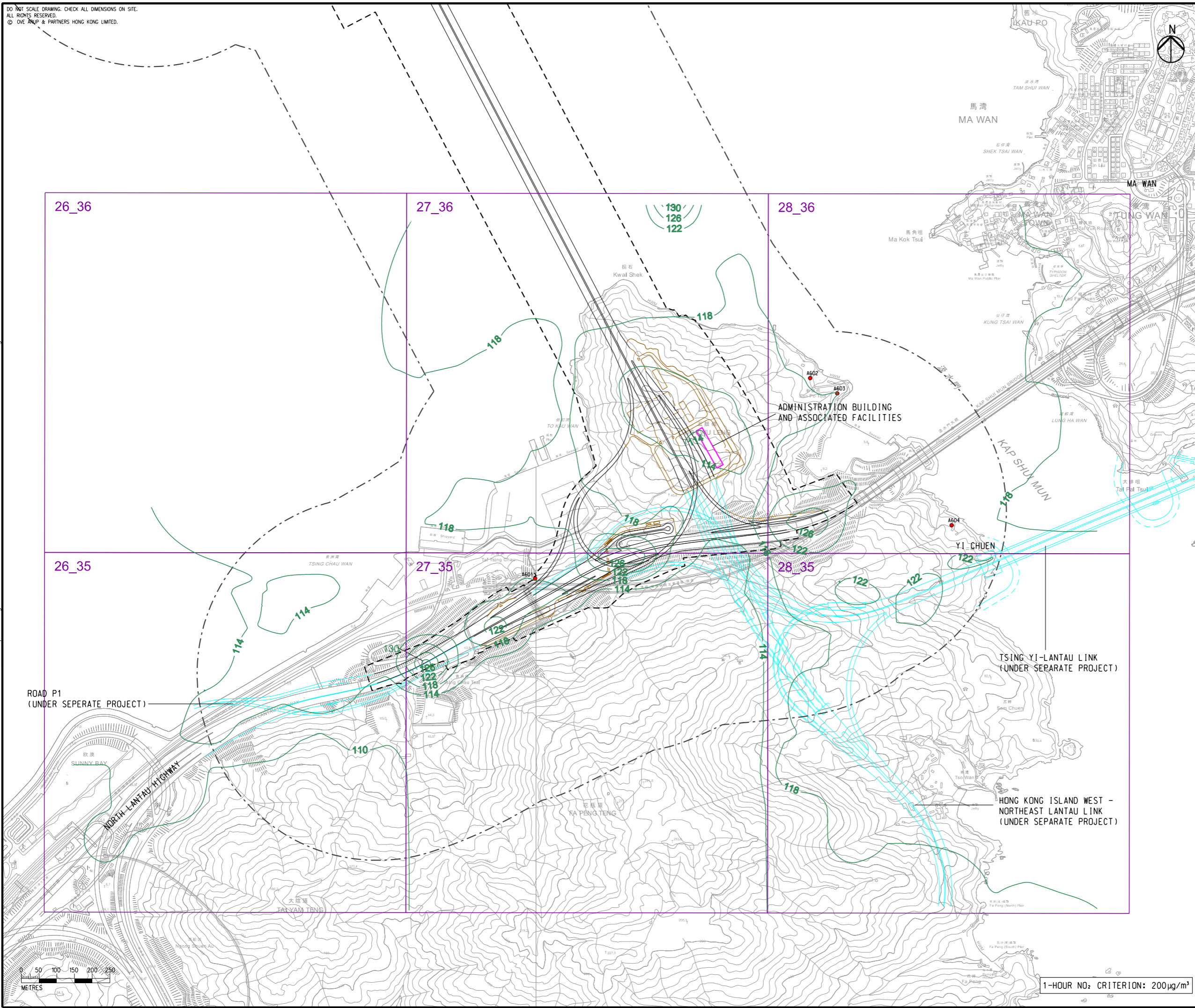


DO NOT SCALE DRAWING. CHECK ALL DIMENSIONS ON SITE.
ALL RIGHTS RESERVED.
© OVE ARUP & PARTNERS HONG KONG LIMITED.

EIA Report\Figure 3.6d - Contours 1hr NO2 (Year 2048) in North Lantau.dgn

22/8/2023

Printed by : richard-kh.lau
Filename :



- LEGEND**
- PROPOSED ELEVATED/ AT-GRADE ROAD
 - PROPOSED TUNNEL
 - HIGHWAY/ TUNNEL OPERATION AND MAINTENANCE FACILITIES
 - PROJECT ELEMENT
 - SITE BOUNDARY
 - 500m OPERATIONAL ASSESSMENT AREA
 - PLANNED ROAD NETWORK (UNDER SEPARATE PROJECTS)
 - 27_36 CONCERNED PATH GRID
 - EXISTING REPRESENTATIVE AIR SENSITIVE RECEIVERS
 - 200— NO₂ CONTOUR, µg/m³

B SECOND ISSUE	GL 08/23
A FIRST ISSUE	GL 06/23
Rev Description	By Date

Consultant **ARUP**

Project Title
**ROUTE 11
(SECTION BETWEEN YUEN LONG AND NORTH LANTAU) - INVESTIGATION**

Drawing title
CONTOURS OF CUMULATIVE 19th HIGHEST 1-HOUR NO₂ CONCENTRATION AT 1.5m ABOVE GROUND (YEAR 2048) IN NORTH LANTAU

Drawing no. FIGURE 3.6d		Rev. B	
Drawn GL	Date 08/23	Checked TL	Approved FC
Scale 1:10000 @ A3	Status PRELIMINARY		

COPYRIGHT RESERVED

**路政署
HIGHWAYS
DEPARTMENT**

1-HOUR NO₂ CRITERION: 200µg/m³