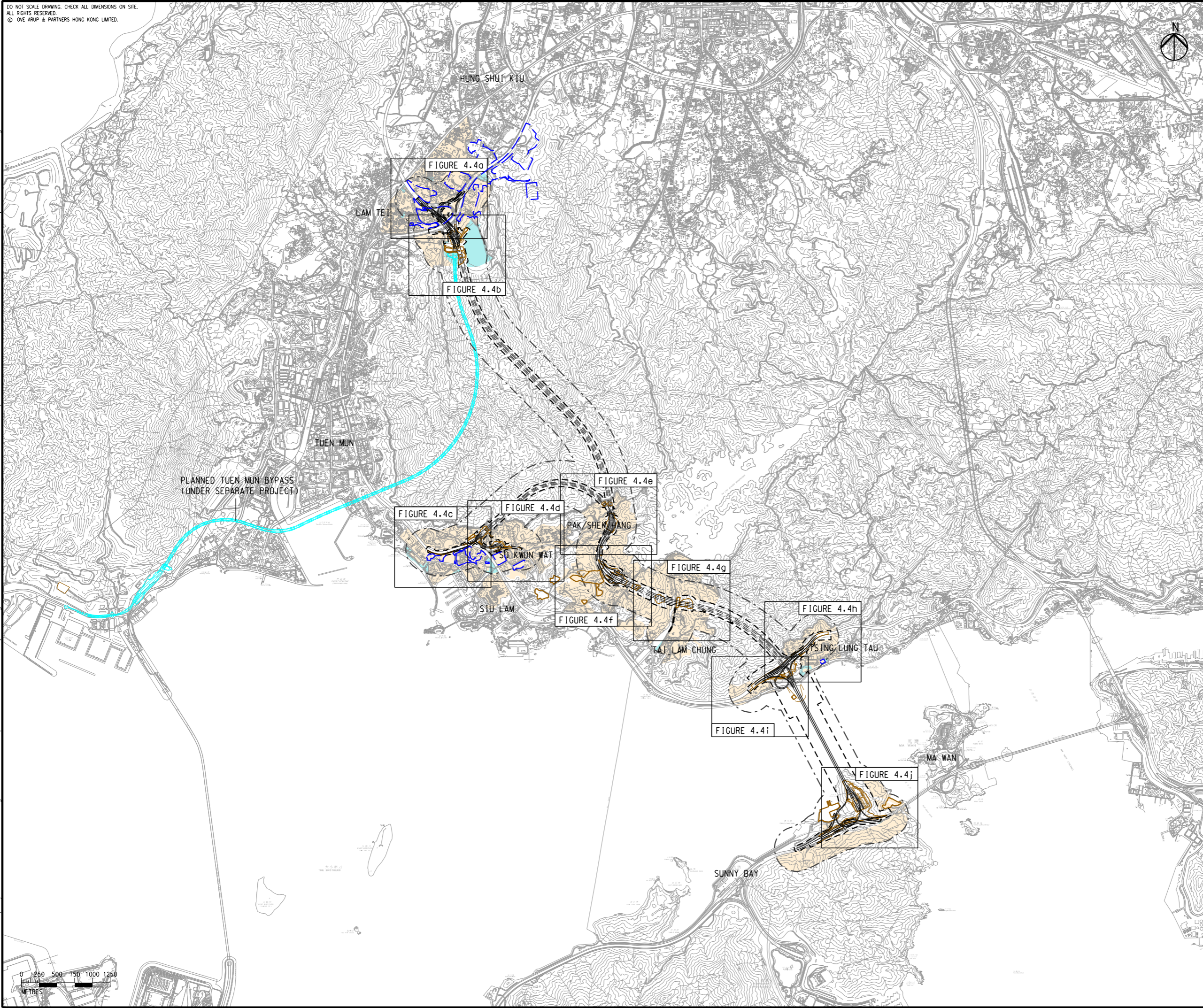


DO NOT SCALE DRAWING. CHECK ALL DIMENSIONS ON SITE.  
 ALL RIGHTS RESERVED.  
 © OVE ARUP & PARTNERS HONG KONG LIMITED.

EIA Report\Figure 4.4 - Locations of NSRs and Selected Representative NAPs for Road Traffic Noise Impact Assessment.dgn

9/7/2023

Printed by : toby lung  
 Filename :



- LEGEND**
- PROPOSED ELEVATED/ AT-GRADE ROAD (TENTATIVE ALIGNMENT)
  - PROPOSED TUNNEL (TENTATIVE ALIGNMENT)
  - PROJECT ELEMENT
  - SITE BOUNDARY
  - 300m ASSESSMENT AREA FOR ROAD TRAFFIC NOISE
  - PLANNED TUEN MUN BYPASS (UNDER SEPARATE PROJECT)
  - COMMITTED/PLANNED DEVELOPMENTS
  - NOISE SENSITIVE RECEIVER AREA
  - NON-NOISE SENSITIVE USE

D	FOURTH ISSUE	GL	08/23
C	THIRD ISSUE	GL	08/23
B	SECOND ISSUE	GL	06/23
A	FIRST ISSUE	GL	04/23
Rev	Description	By	Date

Consultant  
**ARUP**

Project Title  
**ROUTE 11  
 (SECTION BETWEEN YUEN LONG  
 AND NORTH LANTAU) -  
 INVESTIGATION**

Drawing title  
**LOCATIONS OF NSRS AND  
 SELECTED REPRESENTATIVE  
 NAPs FOR ROAD TRAFFIC NOISE  
 IMPACT ASSESSMENT**

Drawing no.		Rev.	
FIGURE 4.4		D	
Drawn	Date	Checked	Approved
GL	08/23	TL	FC
Scale	Status		PRELIMINARY
1:50000 @ A3			

COPYRIGHT RESERVED

**路政署  
 HIGHWAYS  
 DEPARTMENT**

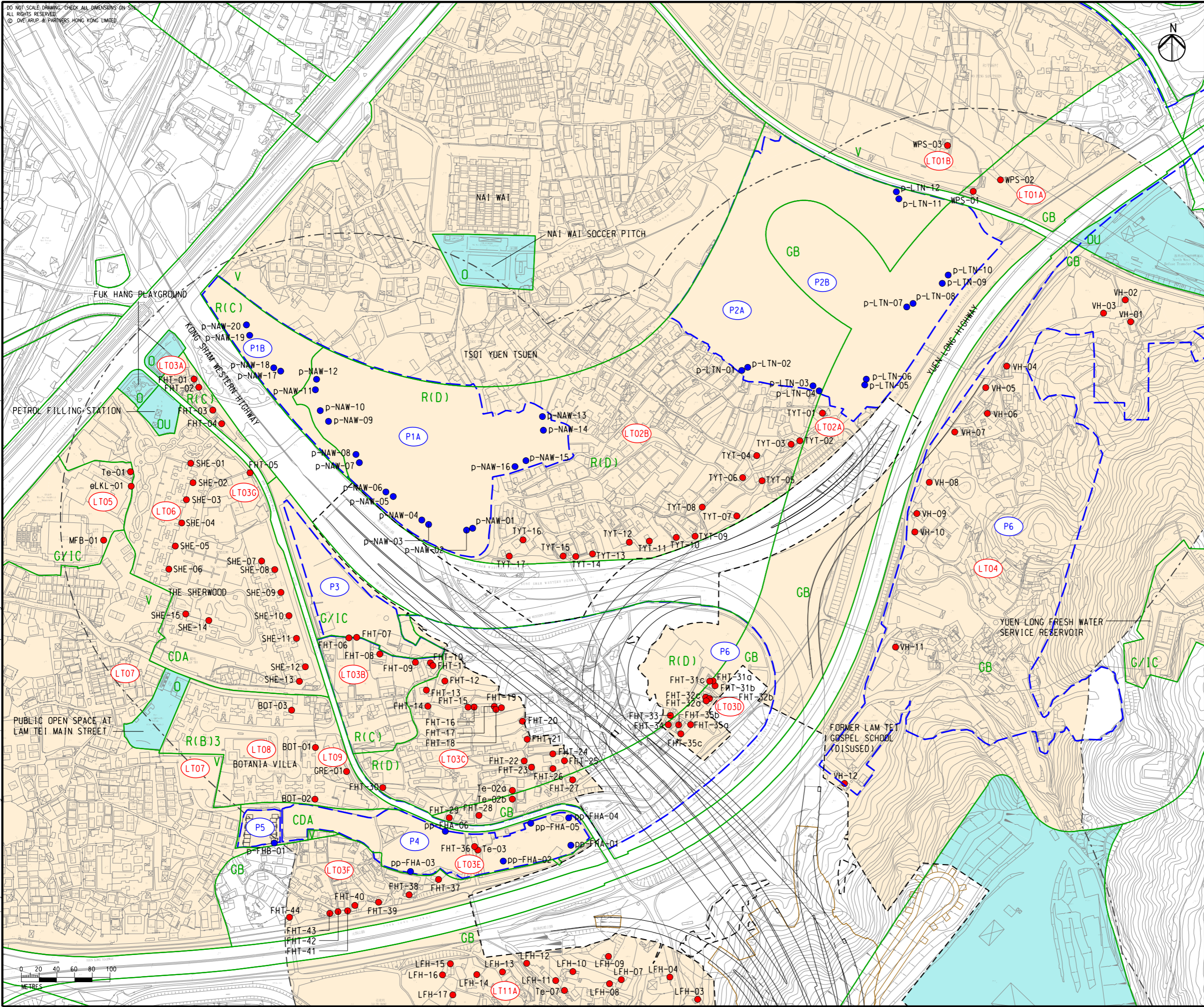


DO NOT SCALE DRAWING. CHECK ALL DIMENSIONS ON SITE.  
ALL RIGHTS RESERVED.  
© OVE ARUP & PARTNERS HONG KONG LIMITED

EIA Report\Figure 4.4a - Locations of NSRs and Selected Representative NAPs for Road Traffic Noise Impact Assessment.dgn

9/7/2023

Printed by : toby lung  
Filename :



- LEGEND**
- PROPOSED ELEVATED/ AT-GRADE ROAD (TENTATIVE ALIGNMENT)
  - PROPOSED TUNNEL (TENTATIVE ALIGNMENT)
  - PROJECT ELEMENT
  - SITE BOUNDARY
  - 300m ASSESSMENT AREA FOR ROAD TRAFFIC NOISE
  - COMMITTED/PLANNED DEVELOPMENTS
  - NOISE SENSITIVE RECEIVER AREA
  - NON-NOISE SENSITIVE USE
  - EXISTING NOISE SENSITIVE RECEIVER (NSR)
  - COMMITTED/PLANNED NOISE SENSITIVE RECEIVER (NSR)
  - EXISTING NOISE ASSESSMENT POINT (NAP)
  - COMMITTED/PLANNED NOISE ASSESSMENT POINT (NAP)
  - OUTLINE ZONING PLAN

**NOTE:**  
EXISTING PREMISES OR PLACE WITHIN THE SITE BOUNDARY TO BE RESUMED OR ALLOCATED ARE NOT CONSIDERED AS NSRS.

Rev	Description	By	Date
D	FOURTH ISSUE	GL	08/23
C	THIRD ISSUE	GL	07/23
B	SECOND ISSUE	GL	06/23
A	FIRST ISSUE	GL	04/23

Consultant  
**ARUP**

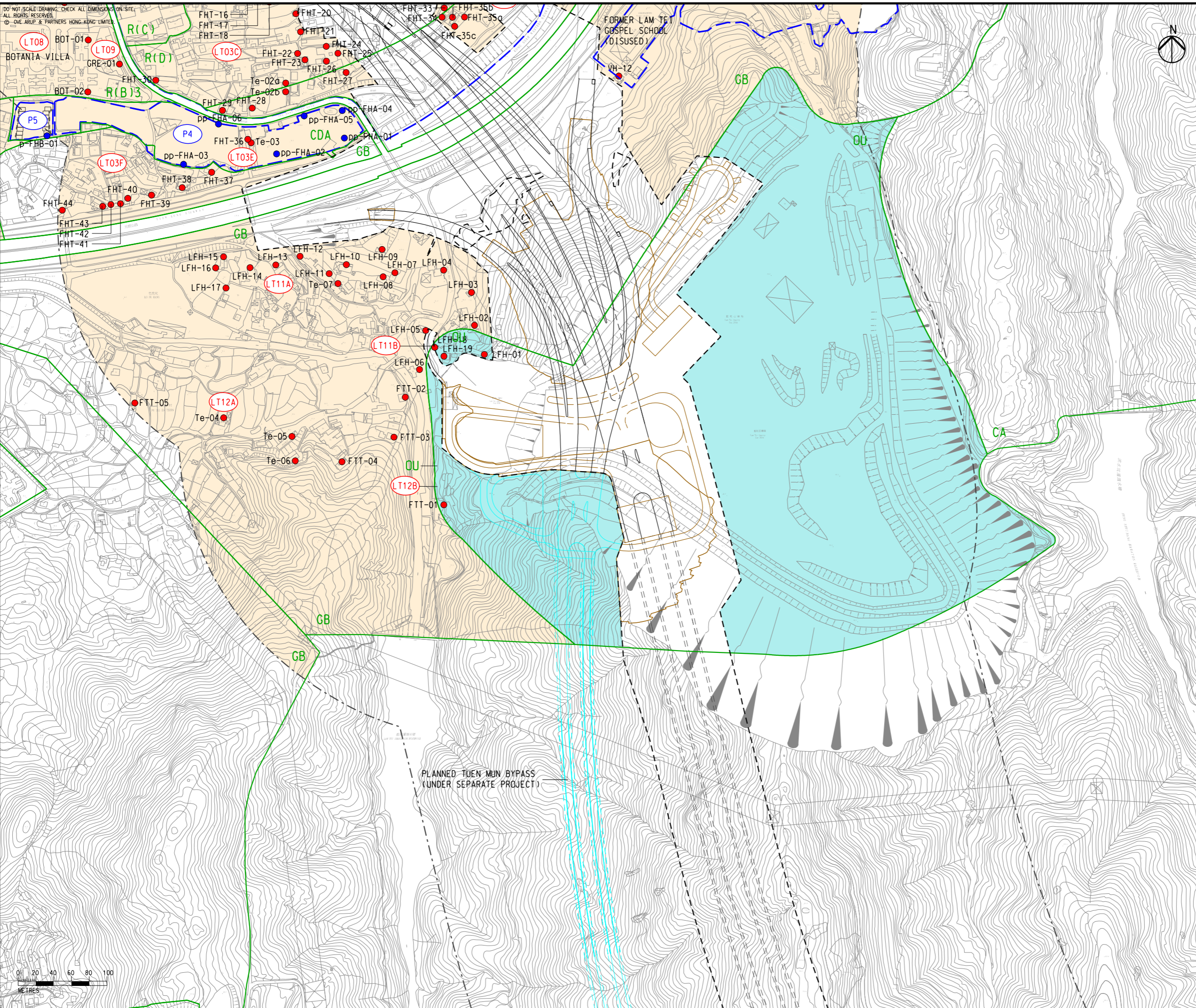
Project Title  
**ROUTE 11  
(SECTION BETWEEN YUEN LONG  
AND NORTH LANTAU) -  
INVESTIGATION**

Drawing title  
**LOCATIONS OF NSRS AND  
SELECTED REPRESENTATIVE  
NAPS FOR ROAD TRAFFIC NOISE  
IMPACT ASSESSMENT**

Drawing no.		Rev.	
FIGURE 4.4a		D	
Drawn	Date	Checked	Approved
GL	08/23	TL	FC
Scale	1:4000 @ A3	Status	PRELIMINARY

COPYRIGHT RESERVED  
**路政署  
HIGHWAYS  
DEPARTMENT**

EIA Report\Figure 4.4b - Locations of NSRs and Selected Representative NAPs for Road Traffic Noise Impact Assessment.dgn



- LEGEND**
- PROPOSED ELEVATED/ AT-GRADE ROAD (TENTATIVE ALIGNMENT)
  - PROPOSED TUNNEL (TENTATIVE ALIGNMENT)
  - PROJECT ELEMENT
  - SITE BOUNDARY
  - 300m ASSESSMENT AREA FOR ROAD TRAFFIC NOISE
  - PLANNED TUEN MUN BYPASS (UNDER SEPARATE PROJECT)
  - COMMITTED/PLANNED DEVELOPMENTS
  - NOISE SENSITIVE RECEIVER AREA
  - NON-NOISE SENSITIVE USE
  - EXISTING NOISE SENSITIVE RECEIVER (NSR)
  - COMMITTED/PLANNED NOISE SENSITIVE RECEIVER (NSR)
  - EXISTING NOISE ASSESSMENT POINT (NAP)
  - COMMITTED/PLANNED NOISE ASSESSMENT POINT (NAP)
  - OUTLINE ZONING PLAN

NOTE:  
EXISTING PREMISES OR PLACE WITHIN THE SITE BOUNDARY TO BE RESUMED OR ALLOCATED ARE NOT CONSIDERED AS NSRS.

D	FOURTH ISSUE	GL	08/23
C	THIRD ISSUE	GL	07/23
B	SECOND ISSUE	GL	06/23
A	FIRST ISSUE	GL	04/23
Rev	Description	By	Date

Consultant **ARUP**

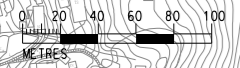
Project Title  
**ROUTE 11  
(SECTION BETWEEN YUEN LONG AND NORTH LANTAU) - INVESTIGATION**

Drawing title  
**LOCATIONS OF NSRS AND SELECTED REPRESENTATIVE NAPs FOR ROAD TRAFFIC NOISE IMPACT ASSESSMENT**

Drawing no. <b>FIGURE 4.4b</b>		Rev. <b>D</b>	
Drawn	Date	Checked	Approved
GL	08/23	TL	FC
Scale	1:4000 @ A3		Status
			PRELIMINARY

COPYRIGHT RESERVED  
 **路政署  
HIGHWAYS  
DEPARTMENT**

9/7/2023  
Printed by : toby lung  
Filename :

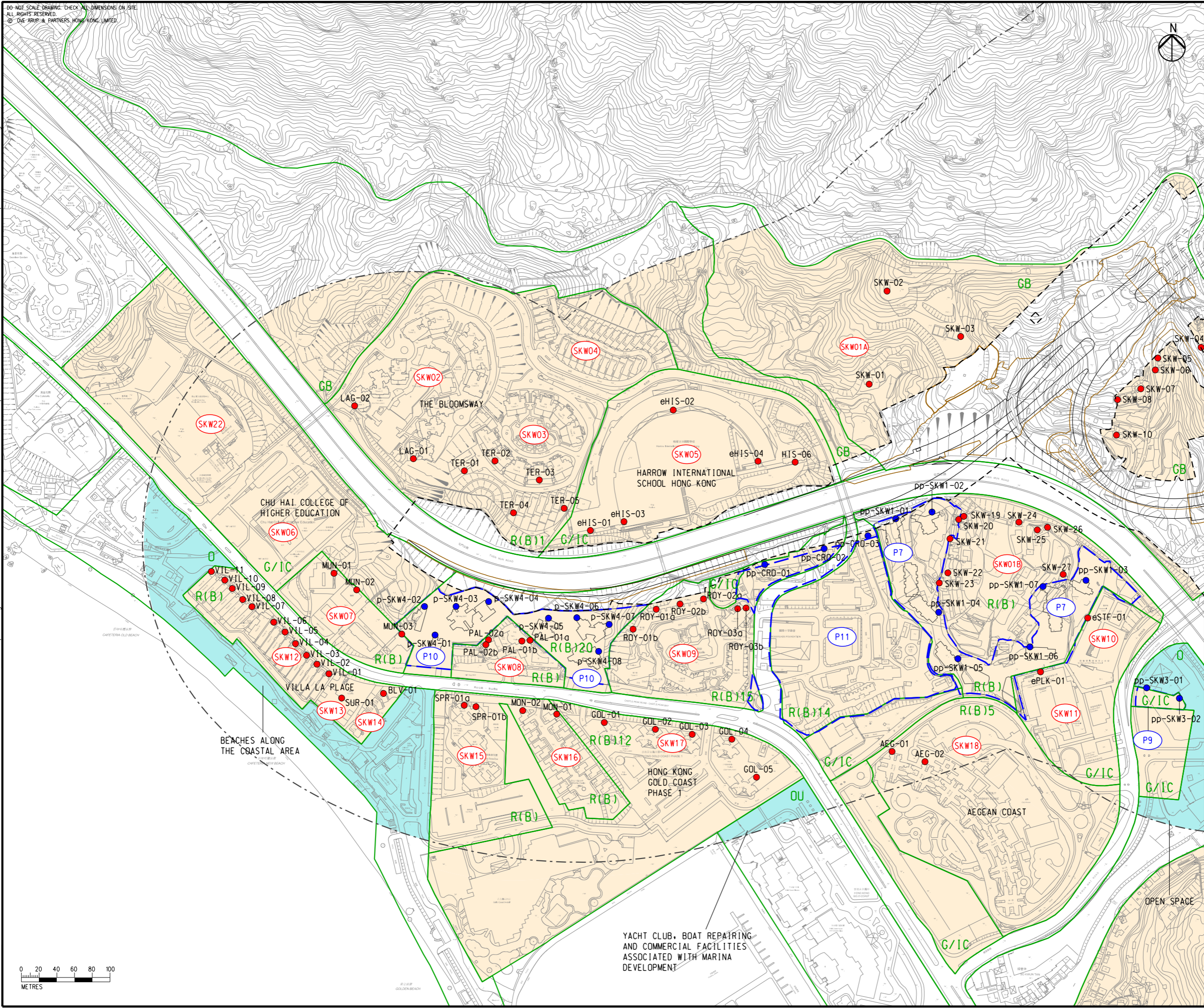
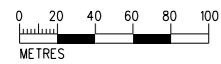


DO NOT SCALE DRAWING. CHECK ALL DIMENSIONS ON SITE.  
ALL RIGHTS RESERVED.  
© 2016 ARUP & PARTNERS, HONG KONG LIMITED.

EIA Report\Figure 4.4c - Locations of NSRs and Selected Representative NAPs for Road Traffic Noise Impact Assessment.dgn

31/8/2023

Printed by : richard-kh.lau  
Filename :



- LEGEND**
- PROPOSED ELEVATED/ AT-GRADE ROAD (TENTATIVE ALIGNMENT)
  - PROPOSED TUNNEL (TENTATIVE ALIGNMENT)
  - PROJECT ELEMENT
  - SITE BOUNDARY
  - 300m ASSESSMENT AREA FOR ROAD TRAFFIC NOISE
  - COMMITTED/PLANNED DEVELOPMENTS
  - NOISE SENSITIVE RECEIVER AREA
  - NON-NOISE SENSITIVE USE
  - EXISTING NOISE SENSITIVE RECEIVER (NSR)
  - COMMITTED/PLANNED NOISE SENSITIVE RECEIVER (NSR)
  - EXISTING NOISE ASSESSMENT POINT (NAP)
  - COMMITTED/PLANNED NOISE ASSESSMENT POINT (NAP)
  - OUTLINE ZONING PLAN

NOTE:  
EXISTING PREMISES OR PLACE WITHIN THE SITE BOUNDARY TO BE RESUMED OR ALLOCATED ARE NOT CONSIDERED AS NSRs.

Rev	Description	By	Date
D	FOURTH ISSUE	GL	08/23
C	THIRD ISSUE	GL	07/23
B	SECOND ISSUE	GL	06/23
A	FIRST ISSUE	GL	04/23

Consultant  
**ARUP**

Project Title  
**ROUTE 11  
(SECTION BETWEEN YUEN LONG  
AND NORTH LANTAU) -  
INVESTIGATION**

Drawing title  
**LOCATIONS OF NSRS AND  
SELECTED REPRESENTATIVE  
NAPS FOR ROAD TRAFFIC NOISE  
IMPACT ASSESSMENT**

Drawing no. <b>FIGURE 4.4c</b>		Rev. <b>D</b>	
Drawn GL	Date 08/23	Checked TL	Approved FC
Scale 1:4000 @ A3	Status PRELIMINARY		

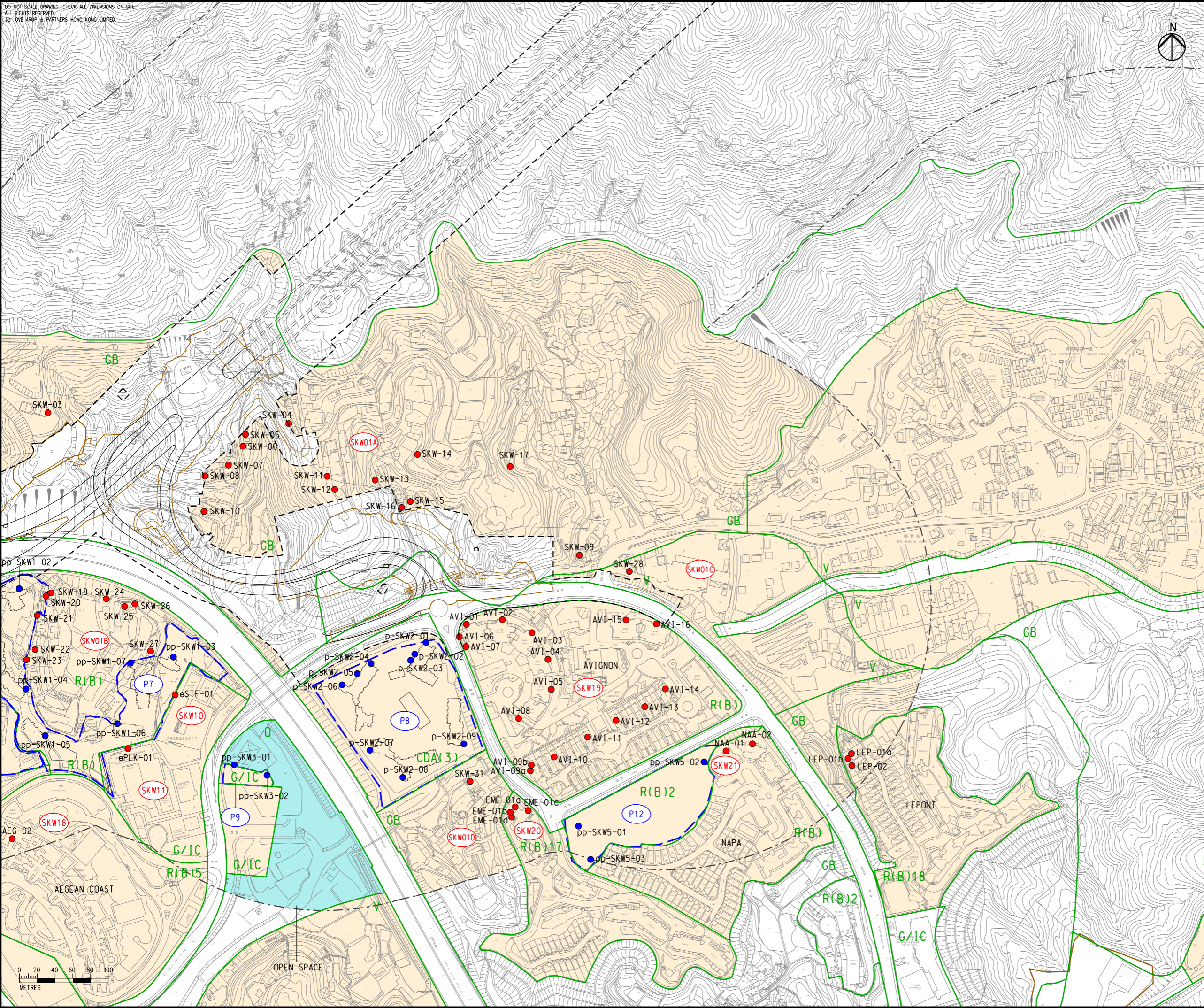
COPYRIGHT RESERVED  
 **路政署  
HIGHWAYS  
DEPARTMENT**

DO NOT SCALE DRAWING. CHECK ALL DIMENSIONS ON-SITE.  
ALL RIGHTS RESERVED.  
© OVE ARUP & PARTNERS HONG KONG LIMITED.

EIA Report\Figure 4.4d - Locations of NSRs and Selected Representative NAPs for Road Traffic Noise Impact Assessment.dgn

29/8/2023

Printed by : richard-kh.lau  
Filename :



- LEGEND**
- PROPOSED ELEVATED/ AT-GRADE ROAD (TENTATIVE ALIGNMENT)
  - PROPOSED TUNNEL (TENTATIVE ALIGNMENT)
  - PROJECT ELEMENT
  - SITE BOUNDARY
  - 300m ASSESSMENT AREA FOR ROAD TRAFFIC NOISE
  - COMMITTED/PLANNED DEVELOPMENTS
  - NOISE SENSITIVE RECEIVER AREA
  - NON-NOISE SENSITIVE USE
  - EXISTING NOISE SENSITIVE RECEIVER (NSR)
  - COMMITTED/PLANNED NOISE SENSITIVE RECEIVER (NSR)
  - EXISTING NOISE ASSESSMENT POINT (NAP)
  - COMMITTED/PLANNED NOISE ASSESSMENT POINT (NAP)
  - OUTLINE ZONING PLAN

**NOTE:**  
EXISTING PREMISES OR PLACE WITHIN THE SITE BOUNDARY TO BE RESUMED OR ALLOCATED ARE NOT CONSIDERED AS NSRs.

Rev	Description	By	Date
D	FOURTH ISSUE	GL	08/23
C	THIRD ISSUE	GL	07/23
B	SECOND ISSUE	GL	06/23
A	FIRST ISSUE	GL	04/23

Consultant  
**ARUP**

Project Title  
**ROUTE 11  
(SECTION BETWEEN YUEN LONG  
AND NORTH LANTAU) -  
INVESTIGATION**

Drawing title  
**LOCATIONS OF NSRS AND  
SELECTED REPRESENTATIVE  
NAPs FOR ROAD TRAFFIC NOISE  
IMPACT ASSESSMENT**

Drawing no. <b>FIGURE 4.4d</b>		Rev. <b>D</b>	
Drawn GL	Date 08/23	Checked TL	Approved FC
Scale 1:4000 @ A3	Status PRELIMINARY		

COPYRIGHT RESERVED

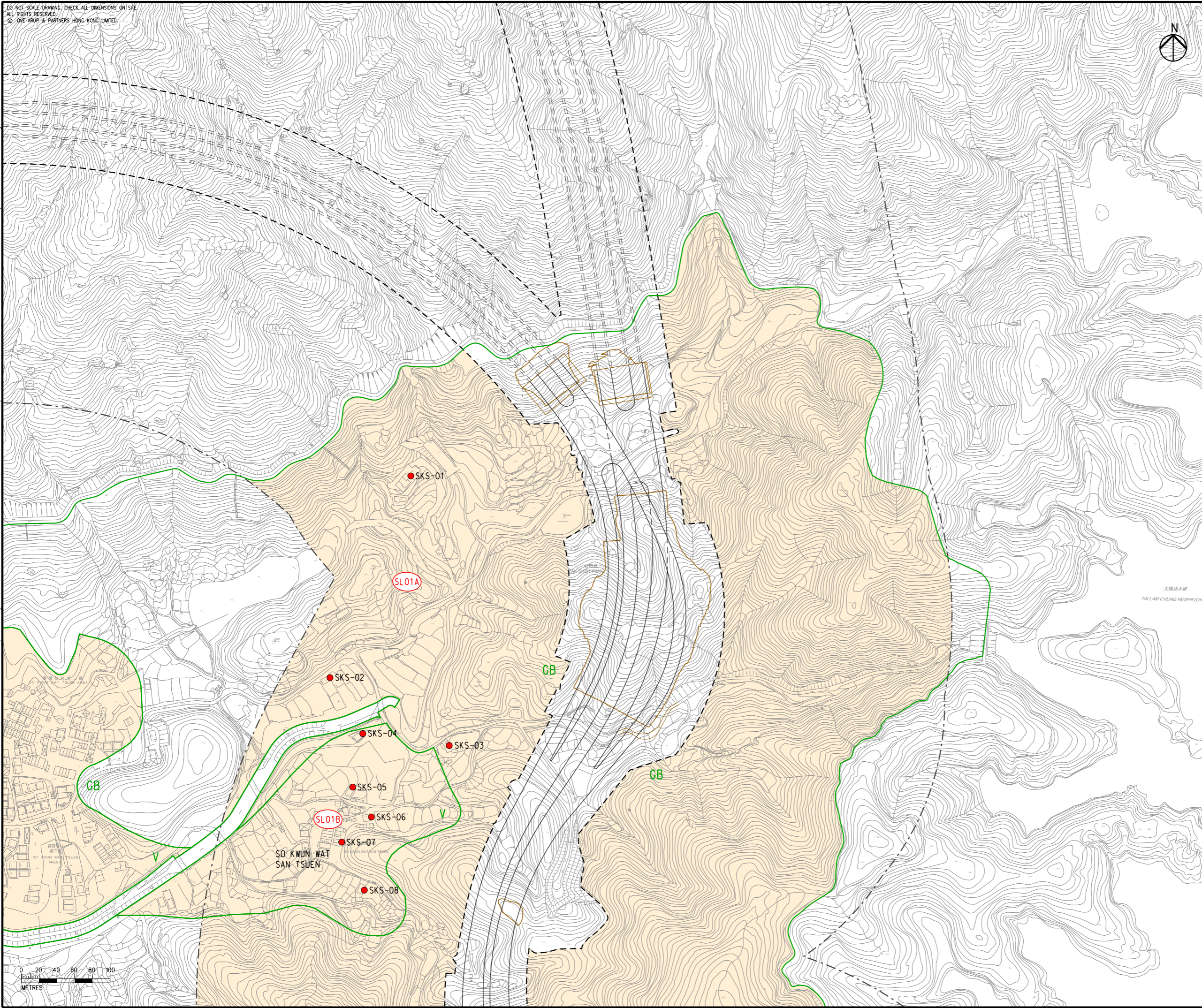
**路政署  
HIGHWAYS  
DEPARTMENT**

DO NOT SCALE DRAWING. CHECK ALL DIMENSIONS ON SITE.  
 ALL RIGHTS RESERVED.  
 © ONE ARUP & PARTNERS HONG KONG LIMITED.

EIA Report\Figure 4.4e - Locations of NSRs and Selected Representative NAPs for Road Traffic Noise Impact Assessment.dgn

29/8/2023

Printed by : richard-kh.lau  
 Filename :



- LEGEND**
- PROPOSED ELEVATED/ AT-GRADE ROAD (TENTATIVE ALIGNMENT)
  - PROPOSED TUNNEL (TENTATIVE ALIGNMENT)
  - PROJECT ELEMENT
  - SITE BOUNDARY
  - 300m ASSESSMENT AREA FOR ROAD TRAFFIC NOISE
  - COMMITTED/PLANNED DEVELOPMENTS
  - NOISE SENSITIVE RECEIVER AREA
  - NON-NOISE SENSITIVE USE
  - E1 EXISTING NOISE SENSITIVE RECEIVER (NSR)
  - P1 COMMITTED/PLANNED NOISE SENSITIVE RECEIVER (NSR)
  - EXISTING NOISE ASSESSMENT POINT (NAP)
  - COMMITTED/PLANNED NOISE ASSESSMENT POINT (NAP)
  - OUTLINE ZONING PLAN

**NOTE:**  
 EXISTING PREMISES OR PLACE WITHIN THE SITE BOUNDARY TO BE RESUMED OR ALLOCATED ARE NOT CONSIDERED AS NSRs.

Rev	Description	By	Date
D	FOURTH ISSUE	GL	08/23
C	THIRD ISSUE	GL	07/23
B	SECOND ISSUE	GL	06/23
A	FIRST ISSUE	GL	04/23

Consultant  
ARUP

Project Title  
**ROUTE 11**  
 (SECTION BETWEEN YUEN LONG AND NORTH LANTAU) - INVESTIGATION

Drawing title  
**LOCATIONS OF NSRS AND SELECTED REPRESENTATIVE NAPs FOR ROAD TRAFFIC NOISE IMPACT ASSESSMENT**

Drawing no. <b>FIGURE 4.4e</b>		Rev. <b>D</b>	
Drawn GL	Date 08/23	Checked TL	Approved FC
Scale 1:4000 @ A3		Status PRELIMINARY	

COPYRIGHT RESERVED

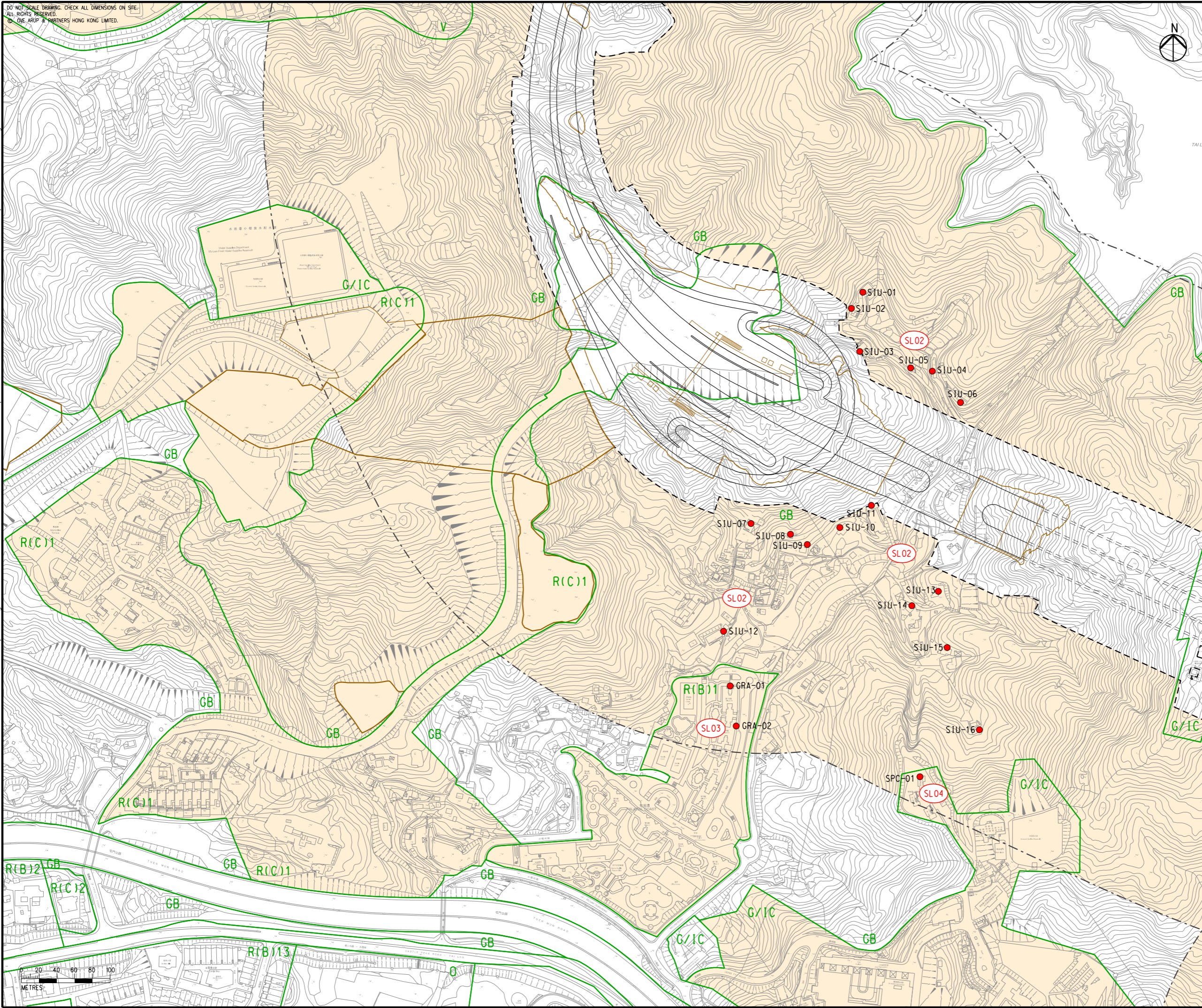
路政署  
HIGHWAYS  
DEPARTMENT

DO NOT SCALE DRAWING. CHECK ALL DIMENSIONS ON SITE.  
ALL RIGHTS RESERVED.  
© ONE ARUP & PARTNERS HONG KONG LIMITED.

EIA Report\Figure 4.4f - Locations of NSRs and Selected Representative NAPs for Road Traffic Noise Impact Assessment.dgn

29/8/2023

Printed by : richard-kh.lau  
Filename :



- LEGEND**
- PROPOSED ELEVATED/ AT-GRADE ROAD (TENTATIVE ALIGNMENT)
  - PROPOSED TUNNEL (TENTATIVE ALIGNMENT)
  - PROJECT ELEMENT
  - SITE BOUNDARY
  - 300m ASSESSMENT AREA FOR ROAD TRAFFIC NOISE
  - COMMITTED/PLANNED DEVELOPMENTS
  - NOISE SENSITIVE RECEIVER AREA
  - NON-NOISE SENSITIVE USE
  - EXISTING NOISE SENSITIVE RECEIVER (NSR)
  - COMMITTED/PLANNED NOISE SENSITIVE RECEIVER (NSR)
  - EXISTING NOISE ASSESSMENT POINT (NAP)
  - COMMITTED/PLANNED NOISE ASSESSMENT POINT (NAP)
  - OUTLINE ZONING PLAN

**NOTE:**  
EXISTING PREMISES OR PLACE WITHIN THE SITE BOUNDARY TO BE RESUMED OR ALLOCATED ARE NOT CONSIDERED AS NSRs.

Rev	Description	By	Date
D	FOURTH ISSUE	GL	08/23
C	THIRD ISSUE	GL	07/23
B	SECOND ISSUE	GL	06/23
A	FIRST ISSUE	GL	04/23

Consultant  
**ARUP**

Project Title  
**ROUTE 11  
(SECTION BETWEEN YUEN LONG AND NORTH LANTAU) - INVESTIGATION**

Drawing title  
**LOCATIONS OF NSRS AND SELECTED REPRESENTATIVE NAPs FOR ROAD TRAFFIC NOISE IMPACT ASSESSMENT**

Drawing no. <b>FIGURE 4.4f</b>		Rev. <b>D</b>	
Drawn GL	Date 08/23	Checked TL	Approved FC
Scale 1:4000 @ A3		Status PRELIMINARY	



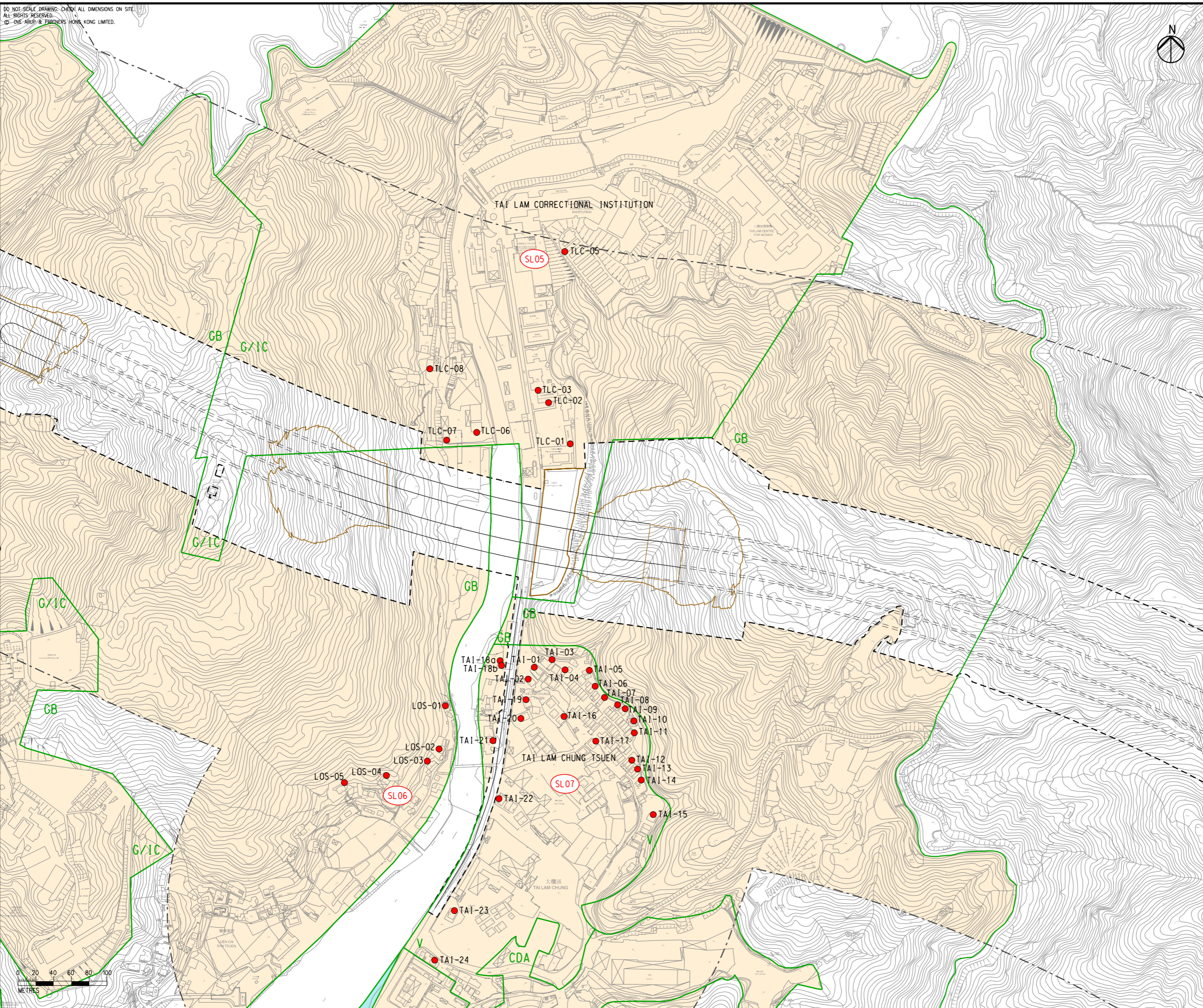
DO NOT SCALE DRAWING. CHECK ALL DIMENSIONS ON SITE.  
 ALL RIGHTS RESERVED.  
 © OVE ARUP & PARTNERS HONG KONG LIMITED.



EIA Report\Figure 4.4g - Locations of NSRs and Selected Representative NAPs for Road Traffic Noise Impact Assessment.dgn

29/8/2023

Printed by : richard-kh.lau  
 Filename :



- LEGEND**
- PROPOSED ELEVATED/ AT-GRADE ROAD (TENTATIVE ALIGNMENT)
  - PROPOSED TUNNEL (TENTATIVE ALIGNMENT)
  - PROJECT ELEMENT
  - SITE BOUNDARY
  - 300m ASSESSMENT AREA FOR ROAD TRAFFIC NOISE
  - COMMITTED/PLANNED DEVELOPMENTS
  - NOISE SENSITIVE RECEIVER AREA
  - NON-NOISE SENSITIVE USE
  - EXISTING NOISE SENSITIVE RECEIVER (NSR)
  - COMMITTED/PLANNED NOISE SENSITIVE RECEIVER (NSR)
  - EXISTING NOISE ASSESSMENT POINT (NAP)
  - COMMITTED/PLANNED NOISE ASSESSMENT POINT (NAP)
  - OUTLINE ZONING PLAN

**NOTE:**  
 EXISTING PREMISES OR PLACE WITHIN THE SITE BOUNDARY TO BE RESUMED OR ALLOCATED ARE NOT CONSIDERED AS NSRs.

D	FOURTH ISSUE	GL	08/23
C	THIRD ISSUE	GL	07/23
B	SECOND ISSUE	GL	06/23
A	FIRST ISSUE	GL	04/23
Rev	Description	By	Date

Consultant

Project Title  
**ROUTE 11**  
 (SECTION BETWEEN YUEN LONG AND NORTH LANTAU) - INVESTIGATION

Drawing title  
**LOCATIONS OF NSRS AND SELECTED REPRESENTATIVE NAPs FOR ROAD TRAFFIC NOISE IMPACT ASSESSMENT**

Drawing no. <b>FIGURE 4.4g</b>		Rev. <b>D</b>	
Drawn GL	Date 08/23	Checked TL	Approved FC
Scale 1:4000 @ A3	Status PRELIMINARY		

COPYRIGHT RESERVED  
  
**路政署**  
**HIGHWAYS DEPARTMENT**

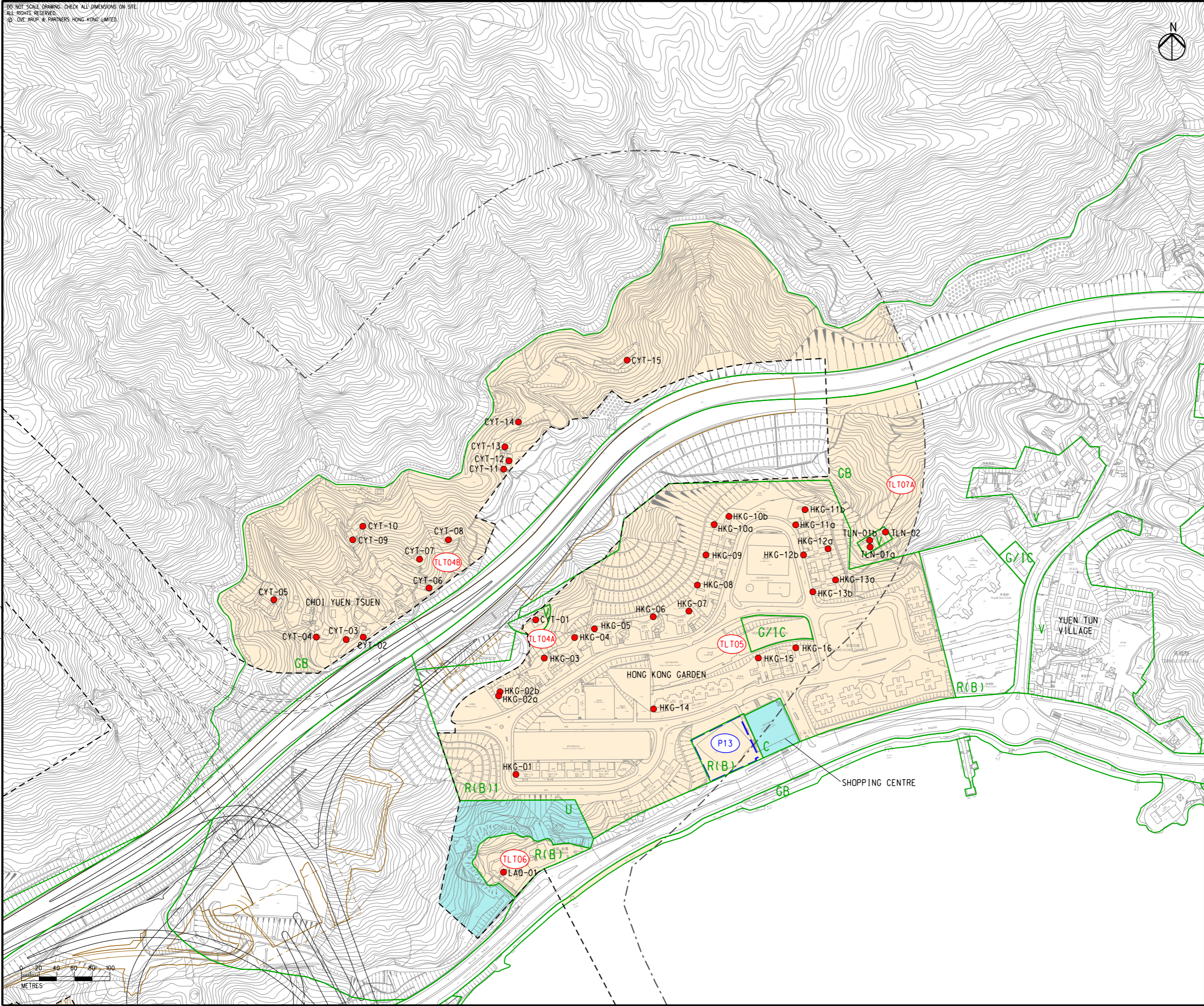


DO NOT SCALE DRAWING. CHECK ALL DIMENSIONS ON SITE.  
 ALL RIGHTS RESERVED.  
 © OVE ARUP & PARTNERS HONG KONG LIMITED.

EIA Report\Figure 4.4h - Locations of NSRs and Selected Representative NAPs for Road Traffic Noise Impact Assessment.dgn

29/8/2023

Printed by : richard-kh.lau  
 Filename :



- LEGEND**
- PROPOSED ELEVATED/ AT-GRADE ROAD (TENTATIVE ALIGNMENT)
  - PROPOSED TUNNEL (TENTATIVE ALIGNMENT)
  - PROJECT ELEMENT
  - SITE BOUNDARY
  - 300m ASSESSMENT AREA FOR ROAD TRAFFIC NOISE
  - COMMITTED/PLANNED DEVELOPMENTS
  - NOISE SENSITIVE RECEIVER AREA
  - NON-NOISE SENSITIVE USE
  - EXISTING NOISE SENSITIVE RECEIVER (NSR)
  - COMMITTED/PLANNED NOISE SENSITIVE RECEIVER (NSR)
  - EXISTING NOISE ASSESSMENT POINT (NAP)
  - COMMITTED/PLANNED NOISE ASSESSMENT POINT (NAP)
  - OUTLINE ZONING PLAN

**NOTE:**  
 EXISTING PREMISES OR PLACE WITHIN THE SITE BOUNDARY TO BE RESUMED OR ALLOCATED ARE NOT CONSIDERED AS NSRs.

Rev	Description	By	Date
D	FOURTH ISSUE	GL	08/23
C	THIRD ISSUE	GL	07/23
B	SECOND ISSUE	GL	06/23
A	FIRST ISSUE	GL	04/23

Consultant  
ARUP

Project Title  
**ROUTE 11**  
 (SECTION BETWEEN YUEN LONG AND NORTH LANTAU) - INVESTIGATION

Drawing title  
**LOCATIONS OF NSRS AND SELECTED REPRESENTATIVE NAPs FOR ROAD TRAFFIC NOISE IMPACT ASSESSMENT**

Drawing no. <b>FIGURE 4.4h</b>		Rev. <b>D</b>	
Drawn GL	Date 08/23	Checked TL	Approved FC
Scale 1:4000 @ A3	Status PRELIMINARY		

COPYRIGHT RESERVED

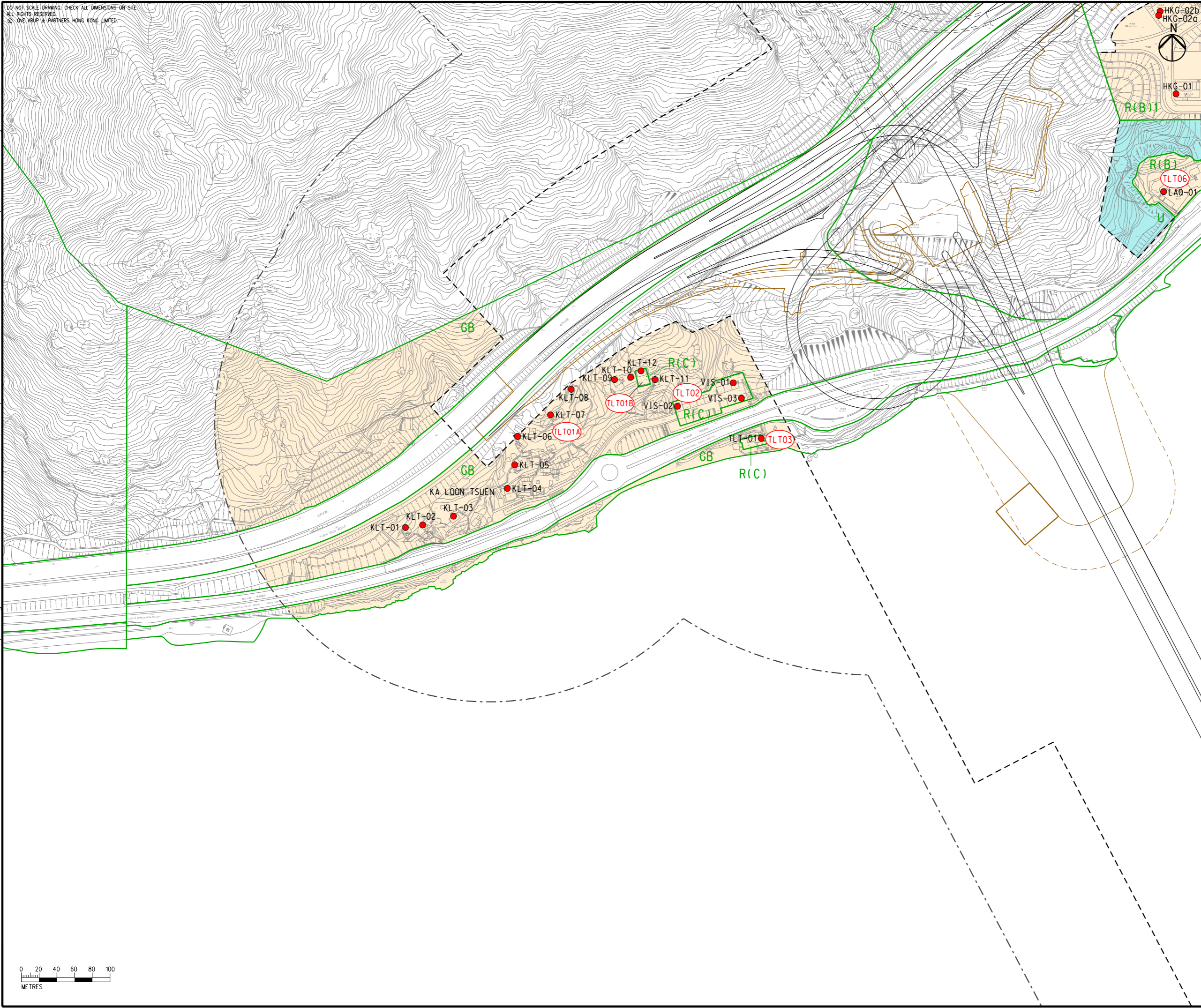
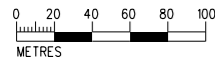
**路政署**  
HIGHWAYS  
DEPARTMENT

DO NOT SCALE DRAWING. CHECK ALL DIMENSIONS ON SITE.  
 ALL RIGHTS RESERVED.  
 © 2016 ARUP & PARTNERS HONG KONG LIMITED.

EIA Report\Figure 4.4i - Locations of NSRs and Selected Representative NAPs for Road Traffic Noise Impact Assessment.dgn

29/8/2023

Printed by : richard-kh.lau  
 Filename :



- LEGEND**
- PROPOSED ELEVATED/ AT-GRADE ROAD (TENTATIVE ALIGNMENT)
  - PROPOSED TUNNEL (TENTATIVE ALIGNMENT)
  - PROJECT ELEMENT
  - SITE BOUNDARY
  - 300m ASSESSMENT AREA FOR ROAD TRAFFIC NOISE
  - COMMITTED/PLANNED DEVELOPMENTS
  - NOISE SENSITIVE RECEIVER AREA
  - NON-NOISE SENSITIVE USE
  - EXISTING NOISE SENSITIVE RECEIVER (NSR)
  - COMMITTED/PLANNED NOISE SENSITIVE RECEIVER (NSR)
  - EXISTING NOISE ASSESSMENT POINT (NAP)
  - COMMITTED/PLANNED NOISE ASSESSMENT POINT (NAP)
  - OUTLINE ZONING PLAN

**NOTE:**  
 EXISTING PREMISES OR PLACE WITHIN THE SITE BOUNDARY TO BE RESUMED OR ALLOCATED ARE NOT CONSIDERED AS NSRs.

Rev	Description	By	Date
D	FOURTH ISSUE	GL	08/23
C	THIRD ISSUE	GL	07/23
B	SECOND ISSUE	GL	06/23
A	FIRST ISSUE	GL	04/23

Consultant  
**ARUP**

Project Title  
**ROUTE 11  
 (SECTION BETWEEN YUEN LONG  
 AND NORTH LANTAU) -  
 INVESTIGATION**

Drawing title  
**LOCATIONS OF NSRS AND  
 SELECTED REPRESENTATIVE  
 NAPs FOR ROAD TRAFFIC NOISE  
 IMPACT ASSESSMENT**

Drawing no. <b>FIGURE 4.4i</b>		Rev. <b>D</b>	
Drawn GL	Date 08/23	Checked TL	Approved FC
Scale 1:4000 @ A3		Status PRELIMINARY	

COPYRIGHT RESERVED

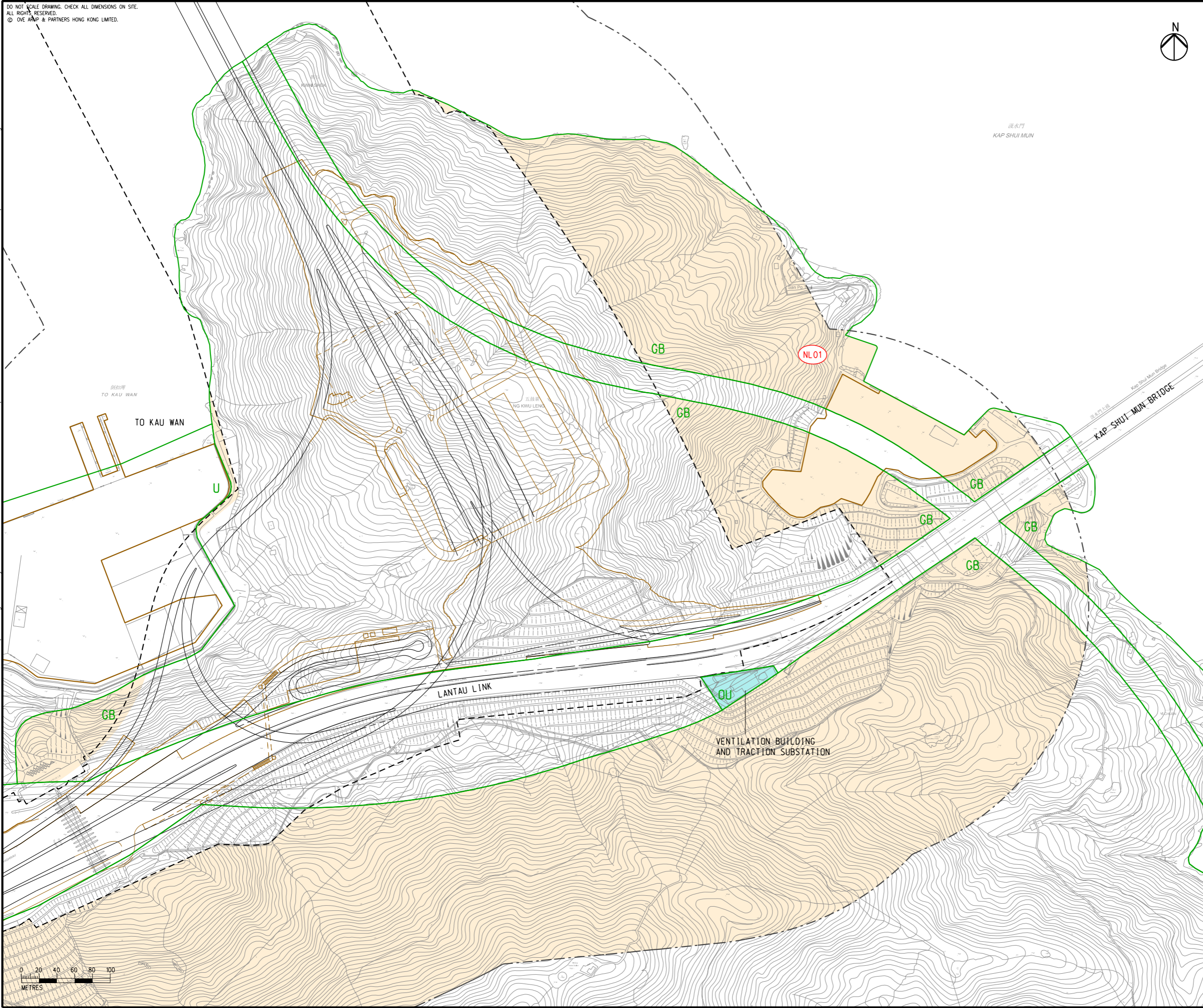
**路政署  
 HIGHWAYS  
 DEPARTMENT**

DO NOT SCALE DRAWING. CHECK ALL DIMENSIONS ON SITE.  
 ALL RIGHTS RESERVED.  
 © OVE ARUP & PARTNERS HONG KONG LIMITED.

EIA Report\Figure 4.4.j - Locations of NSRs and Selected Representative NAPs for Road Traffic Noise Impact Assessment.dgn

29/8/2023

Printed by : richard-kh.lau  
 Filename :



- LEGEND**
- PROPOSED ELEVATED/ AT-GRADE ROAD (TENTATIVE ALIGNMENT)
  - PROPOSED TUNNEL (TENTATIVE ALIGNMENT)
  - PROJECT ELEMENT
  - SITE BOUNDARY
  - 300m ASSESSMENT AREA FOR ROAD TRAFFIC NOISE
  - COMMITTED/PLANNED DEVELOPMENTS
  - NOISE SENSITIVE RECEIVER AREA
  - NON-NOISE SENSITIVE USE
  - EXISTING NOISE SENSITIVE RECEIVER (NSR)
  - COMMITTED/PLANNED NOISE SENSITIVE RECEIVER (NSR)
  - EXISTING NOISE ASSESSMENT POINT (NAP)
  - COMMITTED/PLANNED NOISE ASSESSMENT POINT (NAP)
  - OUTLINE ZONING PLAN

**NOTE:**  
 EXISTING PREMISES OR PLACE WITHIN THE SITE BOUNDARY TO BE RESUMED OR ALLOCATED ARE NOT CONSIDERED AS NSRs.

D	FOURTH ISSUE	GL	08/23
C	THIRD ISSUE	GL	07/23
B	SECOND ISSUE	GL	06/23
A	FIRST ISSUE	GL	04/23
Rev	Description	By	Date

Consultant  
ARUP

Project Title  
**ROUTE 11  
 (SECTION BETWEEN YUEN LONG AND NORTH LANTAU) - INVESTIGATION**

Drawing title  
**LOCATIONS OF NSRS AND SELECTED REPRESENTATIVE NAPs FOR ROAD TRAFFIC NOISE IMPACT ASSESSMENT**

Drawing no. <b>FIGURE 4.4j</b>		Rev. <b>D</b>	
Drawn GL	Date 08/23	Checked TL	Approved FC
Scale 1:4000 @ A3		Status PRELIMINARY	

COPYRIGHT RESERVED

**路政署  
HIGHWAYS  
DEPARTMENT**

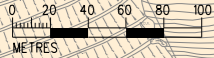


Table with columns: NSR ID [1], OZP Land Use, Description, Use [2], Number of Storeys, NAP ID. Includes sections for Existing NSRs, a. Lam Tei, b. So Kwun Wat / Siu Lam / Tai Lam, and c. Tsing Lung Tau.

Table with columns: NSR ID [1], OZP Land Use, Description, Use [2], Number of Storeys, NAP ID. Includes sections for Existing NSRs, Committed/Planned NSRs, a. Lam Tei, b. So Kwun Wat / Siu Lam / Tai Lam, c. Tsing Lung Tau, and a Notes section.

Revision table with columns: Rev, Description, By, Date. Contains entries for SECOND ISSUE and FIRST ISSUE.



Project Title  
ROUTE 11  
(SECTION BETWEEN YUEN LONG AND NORTH LANTAU) - INVESTIGATION

Drawing title  
LOCATIONS OF NSRS AND SELECTED REPRESENTATIVE NAPS FOR ROAD TRAFFIC NOISE IMPACT ASSESSMENT

Drawing no. FIGURE 4.4k, Rev. B. Includes a table with columns: Drawn, Date, Checked, Approved, Scale, Status.



Table 1: Assessment Point data for WPS, TYT, FHT, Te, and eLKL categories. Columns include NAP ID, Floor, Use, Criteria, Predicted Noise Level (Unmitigated/Mitigated).

Table 2: Assessment Point data for MFB, SHE, and GRE categories. Columns include NAP ID, Floor, Use, Criteria, Predicted Noise Level (Unmitigated/Mitigated).

Table 3: Assessment Point data for BOT, LFH, and FTT categories. Columns include NAP ID, Floor, Use, Criteria, Predicted Noise Level (Unmitigated/Mitigated).

Table 4: Assessment Point data for p-NAW categories. Columns include NAP ID, Floor, Use, Criteria, Predicted Noise Level (Unmitigated/Mitigated).

Table 5: Assessment Point data for p-LTN and pp-FHA categories. Columns include NAP ID, Floor, Use, Criteria, Predicted Noise Level (Unmitigated/Mitigated).

Revision table with columns: Rev, Description, By, Date. Includes a table for Consultant (ARUP), Project Title (ROUTE 11), Drawing title (LOCATIONS OF NSRS AND SELECTED REPRESENTATIVE NAPs FOR ROAD TRAFFIC NOISE IMPACT ASSESSMENT), and Drawing/Approval info (Figure 4.4I, Rev. B, PRELIMINARY).



Table with 5 main columns, each containing a table of Assessment Point data. Each table has columns for NAP ID, Floor, Use, Criteria, and Predicted Noise Level (Unmitigated and Mitigated). The tables are organized by location: SKW, VIL, SPR, MON, GOL, SIU, GRA, and TAI.

Note:  
[1] R - Residential, E - Educational Institutions,  
W - Place of Public Worship; C - Clinic

Revision table with columns: Rev, Description, By, Date. Contains two entries: B SECOND ISSUE (08/23) and A FIRST ISSUE (07/23).



Project Title  
ROUTE 11  
(SECTION BETWEEN YUEN LONG AND NORTH LANTAU) - INVESTIGATION

Drawing title  
LOCATIONS OF NSRS AND SELECTED REPRESENTATIVE NAPs FOR ROAD TRAFFIC NOISE IMPACT ASSESSMENT

Table with drawing details: Drawing no. FIGURE 4.4m, Rev. B, Date 08/23, Status PRELIMINARY.



Assessment Point				Predicted Noise Level, dB(A)		Assessment Point				Predicted Noise Level, dB(A)	
NAP ID	Floor	Use <sup>(1)</sup>	Criteria, dB(A)	Unmitigated	Mitigated	NAP ID	Floor	Use <sup>(1)</sup>	Criteria, dB(A)	Unmitigated	Mitigated
KLT-01	1	R	70	70	70	HKG-12a	5	R	70	58	58
KLT-02	1	R	70	65	65	HKG-12a	10	R	70	60	60
KLT-03	1	R	70	63	63	HKG-12a	20	R	70	65	65
KLT-04	1	R	70	62	62	HKG-12b	1	R	70	56	55
KLT-05	1	R	70	65	65	HKG-12b	5	R	70	57	56
KLT-06	1	R	70	67	67	HKG-12b	10	R	70	59	57
KLT-07	1	R	70	70	70	HKG-12b	20	R	70	63	62
KLT-08	1	R	70	64	64	HKG-13a	1	R	70	55	55
KLT-09	1	R	70	63	63	HKG-13a	5	R	70	57	57
KLT-10	1	R	70	63	63	HKG-13a	10	R	70	59	59
KLT-11	1	R	70	63	63	HKG-13a	20	R	70	63	63
KLT-12	1	R	70	63	63	HKG-13b	1	R	70	57	57
VIS-01	1	R	70	60	60	HKG-13b	5	R	70	58	57
VIS-02	1	R	70	60	60	HKG-13b	10	R	70	58	58
VIS-03	1	R	70	65	65	HKG-13b	20	R	70	61	61
TLT-01	1	R	70	71	71	HKG-14	1	R	70	51	44
CYT-01	1	R	70	60	56	HKG-15	1	R	70	51	50
CYT-02	1	R	70	64	59	HKG-15	5	R	70	52	51
CYT-03	1	R	70	72	66	HKG-15	10	R	70	53	53
CYT-04	1	R	70	70	65	HKG-16	1	R	70	52	50
CYT-05	1	R	70	71	69	HKG-16	5	R	70	53	52
CYT-06	1	R	70	66	62	HKG-16	10	R	70	55	54
CYT-07	1	R	70	73	69	LAQ-01	1	R	70	59	57
CYT-08	1	R	70	73	70	LAQ-01	5	R	70	60	59
CYT-09	1	R	70	71	68	LAQ-01	10	R	70	63	62
CYT-10	1	R	70	70	67	TLN-01a	1	R	70	58	58
CYT-11	1	R	70	68	68	TLN-01b	1	R	70	60	60
CYT-12	1	R	70	70	70	TLN-02	1	R	70	60	60
CYT-13	1	R	70	70	70						
CYT-14	1	R	70	70	70						
CYT-15	1	R	70	70	70						
HKG-01	1	R	70	61	58						
HKG-01	5	R	70	63	60						
HKG-01	10	R	70	65	62						
HKG-01	20	R	70	70	66						
HKG-02a	1	R	70	64	54						
HKG-02a	5	R	70	65	57						
HKG-02a	10	R	70	68	59						
HKG-02a	20	R	70	75	65						
HKG-02b	1	R	70	64	53						
HKG-02b	5	R	70	66	55						
HKG-02b	10	R	70	69	57						
HKG-02b	20	R	70	76	65						
HKG-03	1	R	70	61	55						
HKG-03	5	R	70	63	56						
HKG-03	10	R	70	67	58						
HKG-03	20	R	70	76	65						
HKG-04	1	R	70	59	54						
HKG-04	5	R	70	61	56						
HKG-04	10	R	70	65	58						
HKG-04	20	R	70	75	64						
HKG-05	1	R	70	58	50						
HKG-05	5	R	70	60	51						
HKG-05	10	R	70	64	54						
HKG-05	20	R	70	74	61						
HKG-06	1	R	70	58	54						
HKG-06	5	R	70	60	56						
HKG-06	10	R	70	63	58						
HKG-06	20	R	70	70	63						
HKG-07	1	R	70	57	52						
HKG-07	5	R	70	59	53						
HKG-07	10	R	70	62	55						
HKG-07	20	R	70	68	61						
HKG-08	1	R	70	57	52						
HKG-08	5	R	70	59	53						
HKG-08	10	R	70	62	55						
HKG-08	20	R	70	69	61						
HKG-09	1	R	70	57	53						
HKG-09	5	R	70	59	54						
HKG-09	10	R	70	62	56						
HKG-09	20	R	70	70	64						
HKG-10a	1	R	70	59	56						
HKG-10a	5	R	70	61	58						
HKG-10a	10	R	70	64	61						
HKG-10a	20	R	70	73	69						
HKG-10b	1	R	70	59	58						
HKG-10b	5	R	70	61	60						
HKG-10b	10	R	70	64	62						
HKG-10b	20	R	70	73	71						
HKG-11a	1	R	70	58	57						
HKG-11a	5	R	70	60	58						
HKG-11a	10	R	70	62	61						
HKG-11a	20	R	70	68	67						
HKG-11b	1	R	70	60	59						
HKG-11b	5	R	70	61	60						
HKG-11b	10	R	70	64	63						
HKG-11b	20	R	70	72	71						

Note:  
 [1] R – Residential, E – Educational Institutions,  
 W – Place of Public Worship; C – Clinic

Rev	Description	By	Date
B	SECOND ISSUE	GL	08/23
A	FIRST ISSUE	GL	07/23
Consultant			
<b>ARUP</b>			
Project Title			
ROUTE 11 (SECTION BETWEEN YUEN LONG AND NORTH LANTAU) - INVESTIGATION			
Drawing title			
LOCATIONS OF NSRS AND SELECTED REPRESENTATIVE NAPs FOR ROAD TRAFFIC NOISE IMPACT ASSESSMENT			
Drawing no.		Rev.	
FIGURE 4.4n		B	
Drawn	Date	Checked	Approved
GL	08/23	TL	FC
Scale	Status	PRELIMINARY	

COPYRIGHT RESERVED

