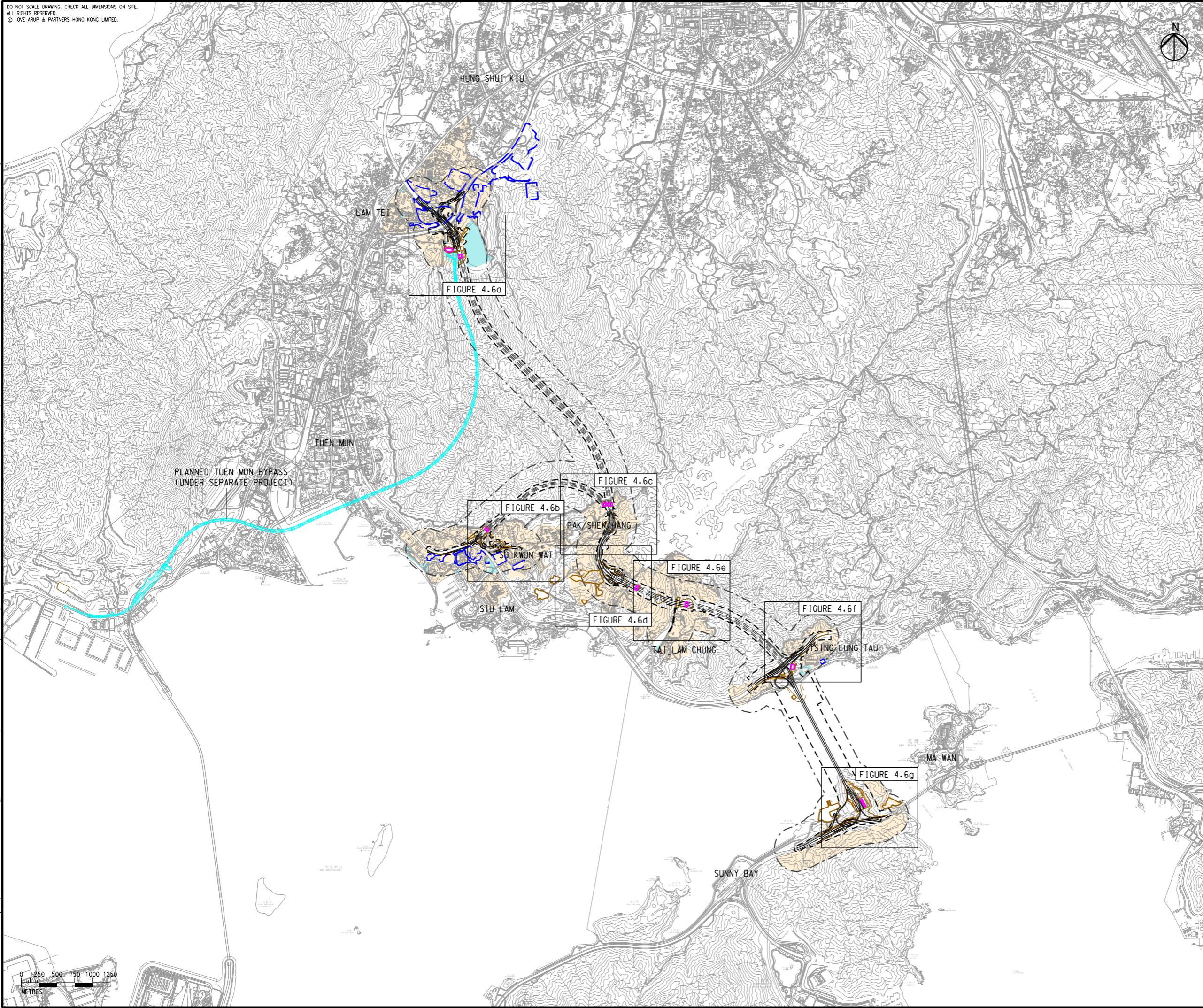


DO NOT SCALE DRAWING. CHECK ALL DIMENSIONS ON SITE.
 ALL RIGHTS RESERVED.
 © OVE ARUP & PARTNERS HONG KONG LIMITED.

EIA Report\Figure 4.6 - Locations of NSRs and Selected Representative NAPs for Fixed Noise Impact Assessment.dgn

9/7/2023

Printed by : toby lung
 Filename :



- LEGEND**
- PROPOSED ELEVATED/ AT-GRADE ROAD (TENTATIVE ALIGNMENT)
 - PROPOSED TUNNEL (TENTATIVE ALIGNMENT)
 - HIGHWAY/ TUNNEL OPERATION AND MAINTENANCE FACILITIES
 - PROJECT ELEMENT
 - SITE BOUNDARY
 - 300m ASSESSMENT AREA FOR FIXED NOISE
 - PLANNED TUEN MUN BYPASS (UNDER SEPARATE PROJECT)
 - COMMITTED/PLANNED DEVELOPMENTS
 - NOISE SENSITIVE RECEIVER AREA
 - NON-NOISE SENSITIVE USE

C	THIRD ISSUE	GL	08/23
B	SECOND ISSUE	GL	06/23
A	FIRST ISSUE	GL	04/23
Rev	Description	By	Date

Consultant **ARUP**

Project Title
ROUTE 11
 (SECTION BETWEEN YUEN LONG AND NORTH LANTAU) - INVESTIGATION

Drawing title
LOCATIONS OF NSRS AND SELECTED REPRESENTATIVE NAPs FOR FIXED NOISE IMPACT ASSESSMENT

Drawing no. FIGURE 4.6		Rev. C	
Drawn GL	Date 08/23	Checked TL	Approved FC
Scale 1:50000 @ A3		Status PRELIMINARY	

COPYRIGHT RESERVED

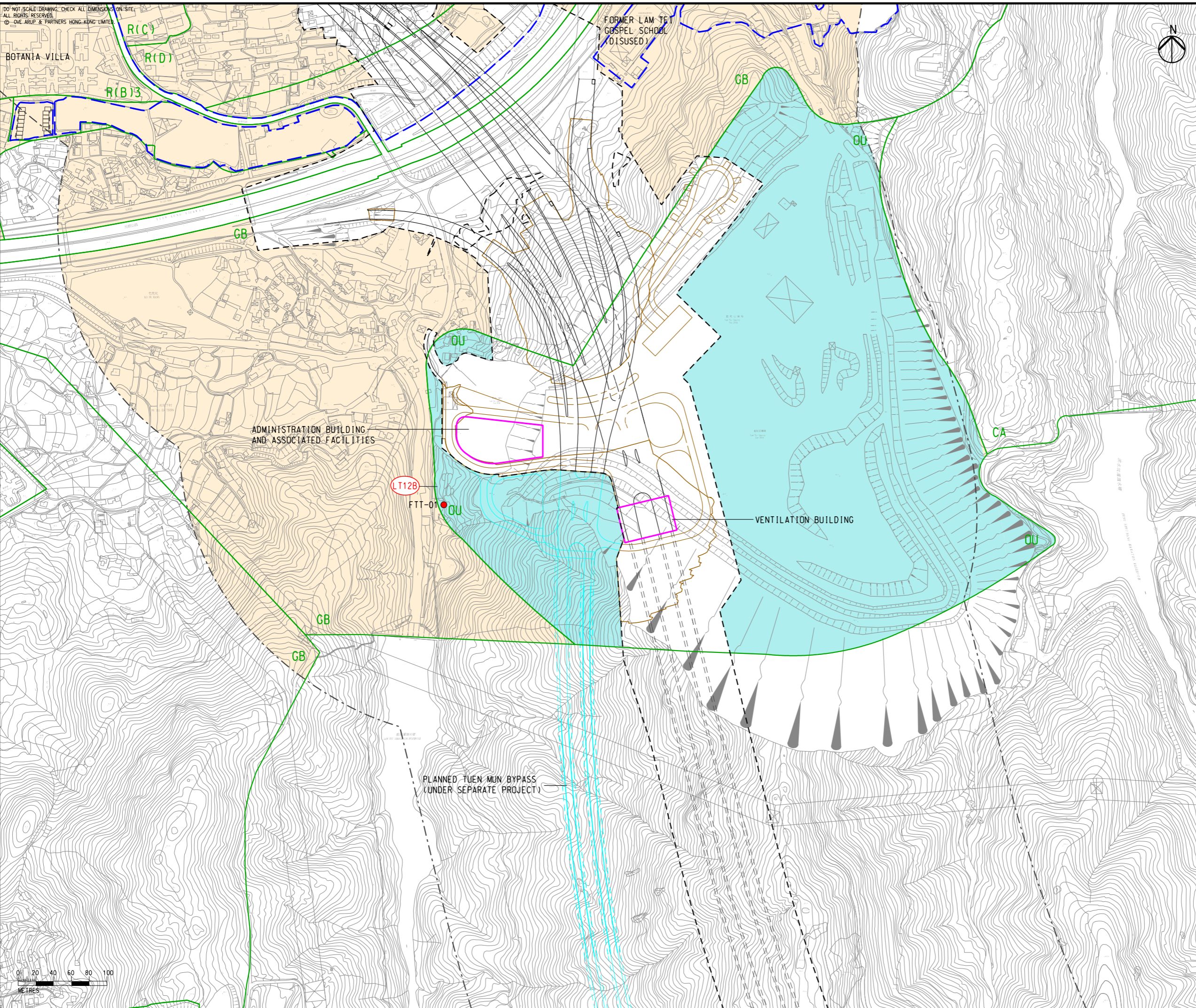
路政署
HIGHWAYS
DEPARTMENT



EIA Report\Figure 4.6a - Locations of NSRs and Selected Representative NAPs for Fixed Noise Impact Assessment.dgn

9/7/2023

Printed by : toby lung
Filename :



- LEGEND**
- PROPOSED ELEVATED/ AT-GRADE ROAD (TENTATIVE ALIGNMENT)
 - PROPOSED TUNNEL (TENTATIVE ALIGNMENT)
 - HIGHWAY/ TUNNEL OPERATION AND MAINTENANCE FACILITIES
 - PROJECT ELEMENT
 - SITE BOUNDARY
 - 300m ASSESSMENT AREA FOR FIXED NOISE
 - PLANNED TUEN MUN BYPASS (UNDER SEPARATE PROJECT)
 - COMMITTED/PLANNED DEVELOPMENTS
 - NOISE SENSITIVE RECEIVER AREA
 - NON-NOISE SENSITIVE USE
 - EXISTING NOISE SENSITIVE RECEIVER (NSR)
 - EXISTING NOISE ASSESSMENT POINT (NAP)
 - OUTLINE ZONING PLAN

NOTE:
EXISTING PREMISES OR PLACE WITHIN THE SITE BOUNDARY TO BE RESUMED OR ALLOCATED ARE NOT CONSIDERED AS NSRS.

D	FOURTH ISSUE	GL	08/23
C	THIRD ISSUE	GL	07/23
B	SECOND ISSUE	GL	06/23
A	FIRST ISSUE	GL	04/23
Rev	Description	By	Date

Consultant
ARUP

Project Title
**ROUTE 11
(SECTION BETWEEN YUEN LONG AND NORTH LANTAU) - INVESTIGATION**

Drawing title
LOCATIONS OF NSRS AND SELECTED REPRESENTATIVE NAPs FOR FIXED NOISE IMPACT ASSESSMENT

Drawing no. FIGURE 4.6a		Rev. D	
Drawn GL	Date 08/23	Checked TL	Approved FC
Scale 1:4000 @ A3		Status PRELIMINARY	

COPYRIGHT RESERVED

**路政署
HIGHWAYS
DEPARTMENT**

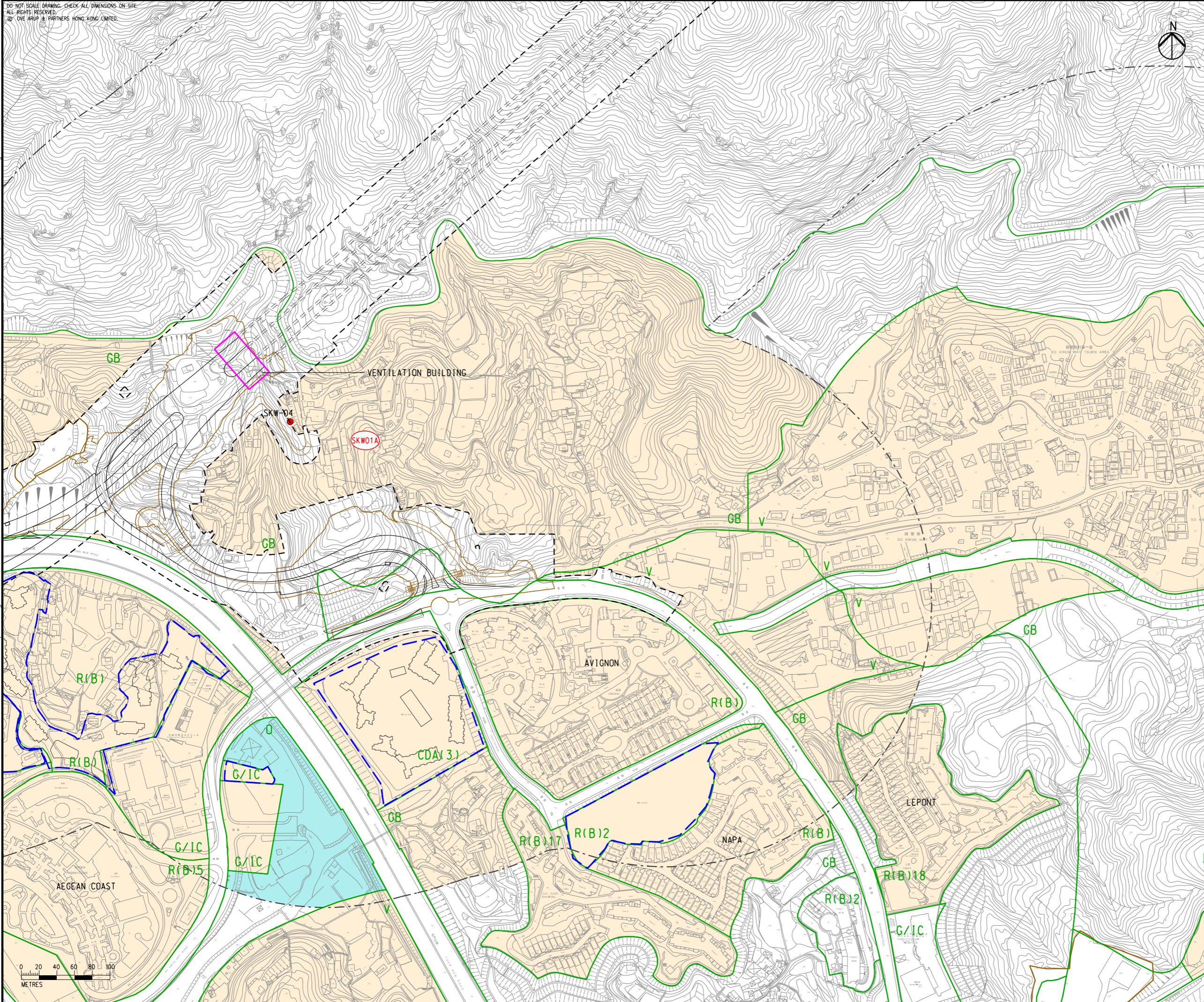
DO NOT SCALE DRAWING. CHECK ALL DIMENSIONS ON-SITE.
 ALL RIGHTS RESERVED.
 © 2023 ARUP & PARTNERS HONG KONG LIMITED.



EIA Report\Figure 4.6b - Locations of NSRs and Selected Representative NAPs for Fixed Noise Impact Assessment.dgn

28/8/2023

Printed by : richard-kh.lau
 Filename :



- LEGEND**
- PROPOSED ELEVATED/ AT-GRADE ROAD (TENTATIVE ALIGNMENT)
 - PROPOSED TUNNEL (TENTATIVE ALIGNMENT)
 - HIGHWAY/ TUNNEL OPERATION AND MAINTENANCE FACILITIES
 - PROJECT ELEMENT
 - SITE BOUNDARY
 - 300m ASSESSMENT AREA FOR FIXED NOISE
 - COMMITTED/PLANNED DEVELOPMENTS
 - NOISE SENSITIVE RECEIVER AREA
 - NON-NOISE SENSITIVE USE
 - EXISTING NOISE SENSITIVE RECEIVER (NSR)
 - EXISTING NOISE ASSESSMENT POINT (NAP)
 - OUTLINE ZONING PLAN

NOTE:
 EXISTING PREMISES OR PLACE WITHIN THE SITE BOUNDARY TO BE RESUMED OR ALLOCATED ARE NOT CONSIDERED AS NSRs.

D	FOURTH ISSUE	GL	08/23
C	THIRD ISSUE	GL	07/23
B	SECOND ISSUE	GL	06/23
A	FIRST ISSUE	GL	04/23
Rev	Description	By	Date

Consultant
ARUP

Project Title
ROUTE 11
 (SECTION BETWEEN YUEN LONG AND NORTH LANTAU) - INVESTIGATION

Drawing title
LOCATIONS OF NSRS AND SELECTED REPRESENTATIVE NAPs FOR FIXED NOISE IMPACT ASSESSMENT

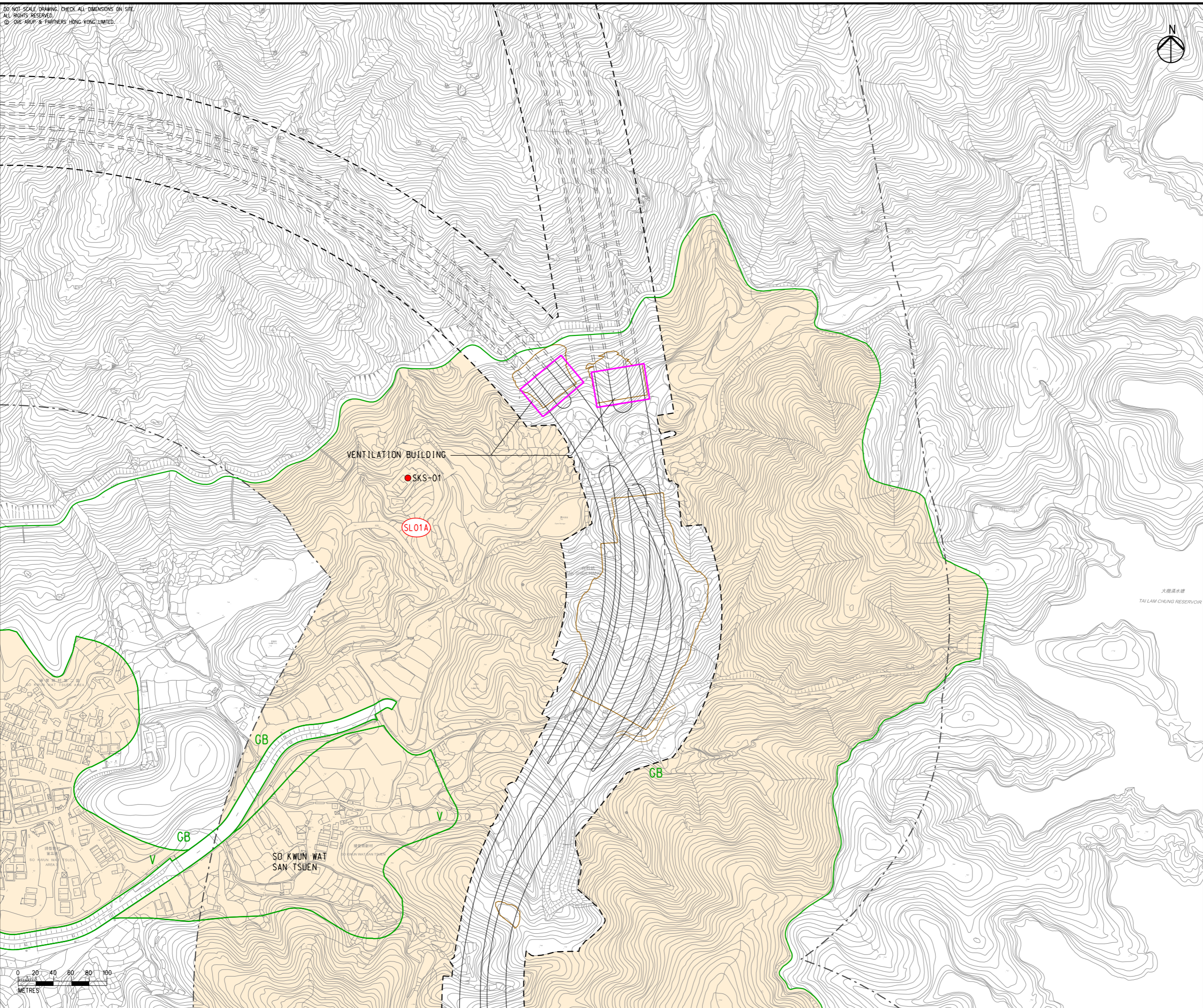
Drawing no. FIGURE 4.6b		Rev. D	
Drawn GL	Date 08/23	Checked TL	Approved FC
Scale 1:4000 @ A3		Status PRELIMINARY	



DO NOT SCALE DRAWING. CHECK ALL DIMENSIONS ON SITE.
 ALL RIGHTS RESERVED.
 © ONE ARUP & PARTNERS HONG KONG LIMITED.



EIA Report\Figure 4.6c - Locations of NSRs and Selected Representative NAPs for Fixed Noise Impact Assessment.dgn



- LEGEND**
- PROPOSED ELEVATED/ AT-GRADE ROAD (TENTATIVE ALIGNMENT)
 - PROPOSED TUNNEL (TENTATIVE ALIGNMENT)
 - HIGHWAY/ TUNNEL OPERATION AND MAINTENANCE FACILITIES
 - PROJECT ELEMENT
 - SITE BOUNDARY
 - 300m ASSESSMENT AREA FOR FIXED NOISE
 - COMMITTED/PLANNED DEVELOPMENTS
 - NOISE SENSITIVE RECEIVER AREA
 - NON-NOISE SENSITIVE USE
 - EXISTING NOISE SENSITIVE RECEIVER (NSR)
 - EXISTING NOISE ASSESSMENT POINT (NAP)
 - OUTLINE ZONING PLAN

NOTE:
 EXISTING PREMISES OR PLACE WITHIN THE SITE BOUNDARY TO BE RESUMED OR ALLOCATED ARE NOT CONSIDERED AS NSRs.

D	FOURTH ISSUE	GL	08/23
C	THIRD ISSUE	GL	07/23
B	SECOND ISSUE	GL	06/23
A	FIRST ISSUE	GL	04/23
Rev	Description	By	Date

Consultant
ARUP

Project Title
**ROUTE 11
 (SECTION BETWEEN YUEN LONG
 AND NORTH LANTAU) -
 INVESTIGATION**

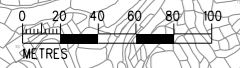
Drawing title
**LOCATIONS OF NSRS AND
 SELECTED REPRESENTATIVE
 NAPs FOR FIXED NOISE
 IMPACT ASSESSMENT**

Drawing no. FIGURE 4.6c		Rev. D	
Drawn GL	Date 08/23	Checked TL	Approved FC
Scale 1:4000 @ A3		Status PRELIMINARY	

COPYRIGHT RESERVED

**路政署
 HIGHWAYS
 DEPARTMENT**

Printed by : richard-kh.lau
 Filename : 28/8/2023

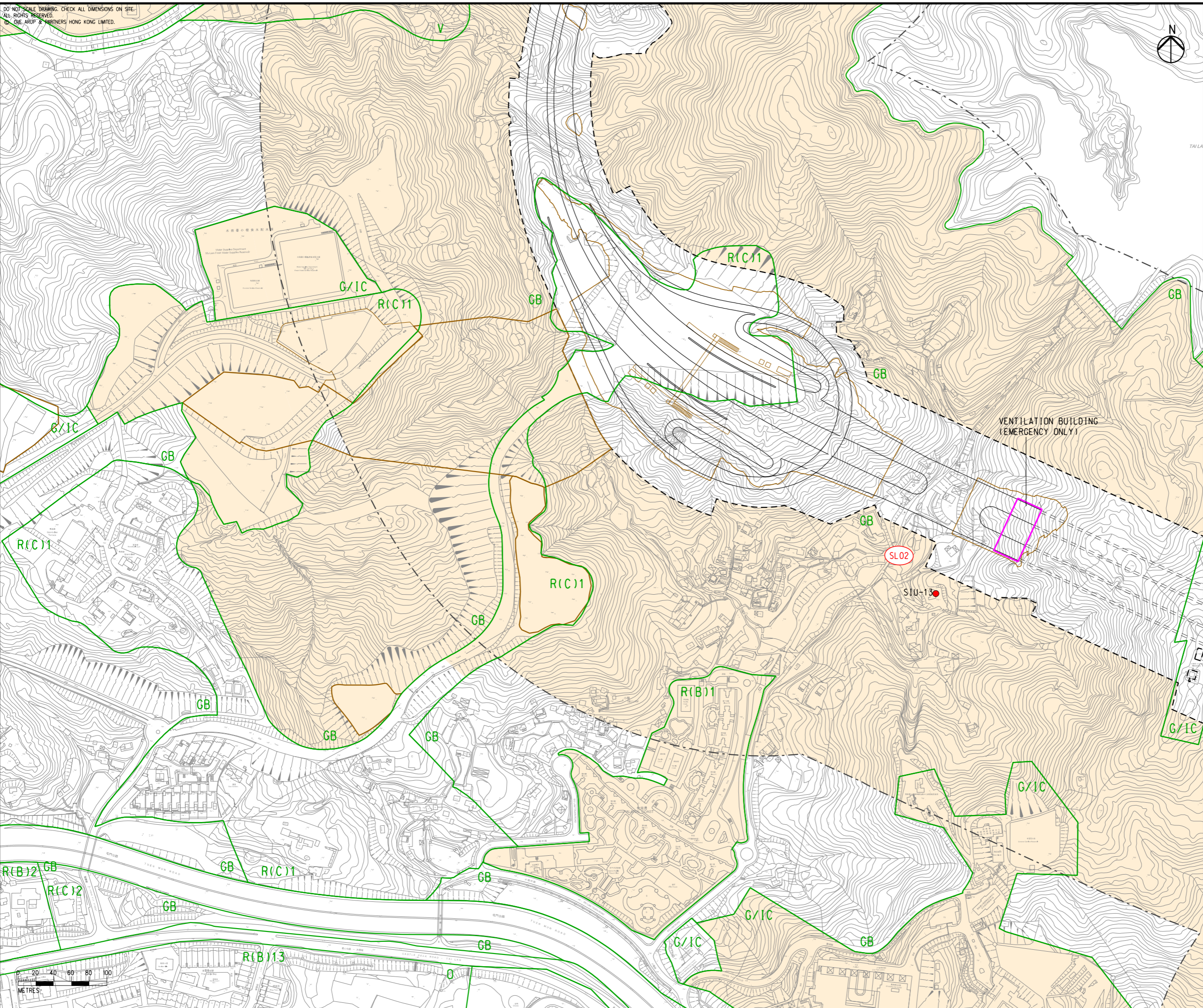


DO NOT SCALE DRAWING. CHECK ALL DIMENSIONS ON SITE.
ALL RIGHTS RESERVED.
© ARUP & PARTNERS HONG KONG LIMITED.



- LEGEND**
- PROPOSED ELEVATED/ AT-GRADE ROAD (TENTATIVE ALIGNMENT)
 - PROPOSED TUNNEL (TENTATIVE ALIGNMENT)
 - HIGHWAY/ TUNNEL OPERATION AND MAINTENANCE FACILITIES
 - PROJECT ELEMENT
 - SITE BOUNDARY
 - 300m ASSESSMENT AREA FOR FIXED NOISE
 - COMMITTED/PLANNED DEVELOPMENTS
 - NOISE SENSITIVE RECEIVER AREA
 - NON-NOISE SENSITIVE USE
 - EXISTING NOISE SENSITIVE RECEIVER (NSR)
 - EXISTING NOISE ASSESSMENT POINT (NAP)
 - OUTLINE ZONING PLAN

EIA Report\Figure 4.6d - Locations of NSRs and Selected Representative NAPs for Fixed Noise Impact Assessment.dgn



Rev	Description	By	Date
D	FOURTH ISSUE	GL	08/23
C	THIRD ISSUE	GL	07/23
B	SECOND ISSUE	GL	06/23
A	FIRST ISSUE	GL	04/23

Consultant
ARUP

Project title
**ROUTE 11
(SECTION BETWEEN YUEN LONG
AND NORTH LANTAU) -
INVESTIGATION**

Drawing title
**LOCATIONS OF NSRS AND
SELECTED REPRESENTATIVE
NAPS FOR FIXED NOISE
IMPACT ASSESSMENT**

Drawing no. FIGURE 4.6d		Rev. D	
Drawn GL	Date 08/23	Checked TL	Approved FC
Scale 1:4000 @ A3		Status PRELIMINARY	

COPYRIGHT RESERVED
 **路政署
HIGHWAYS
DEPARTMENT**

Printed by : richard-kh.lau
Filename : 28/8/2023

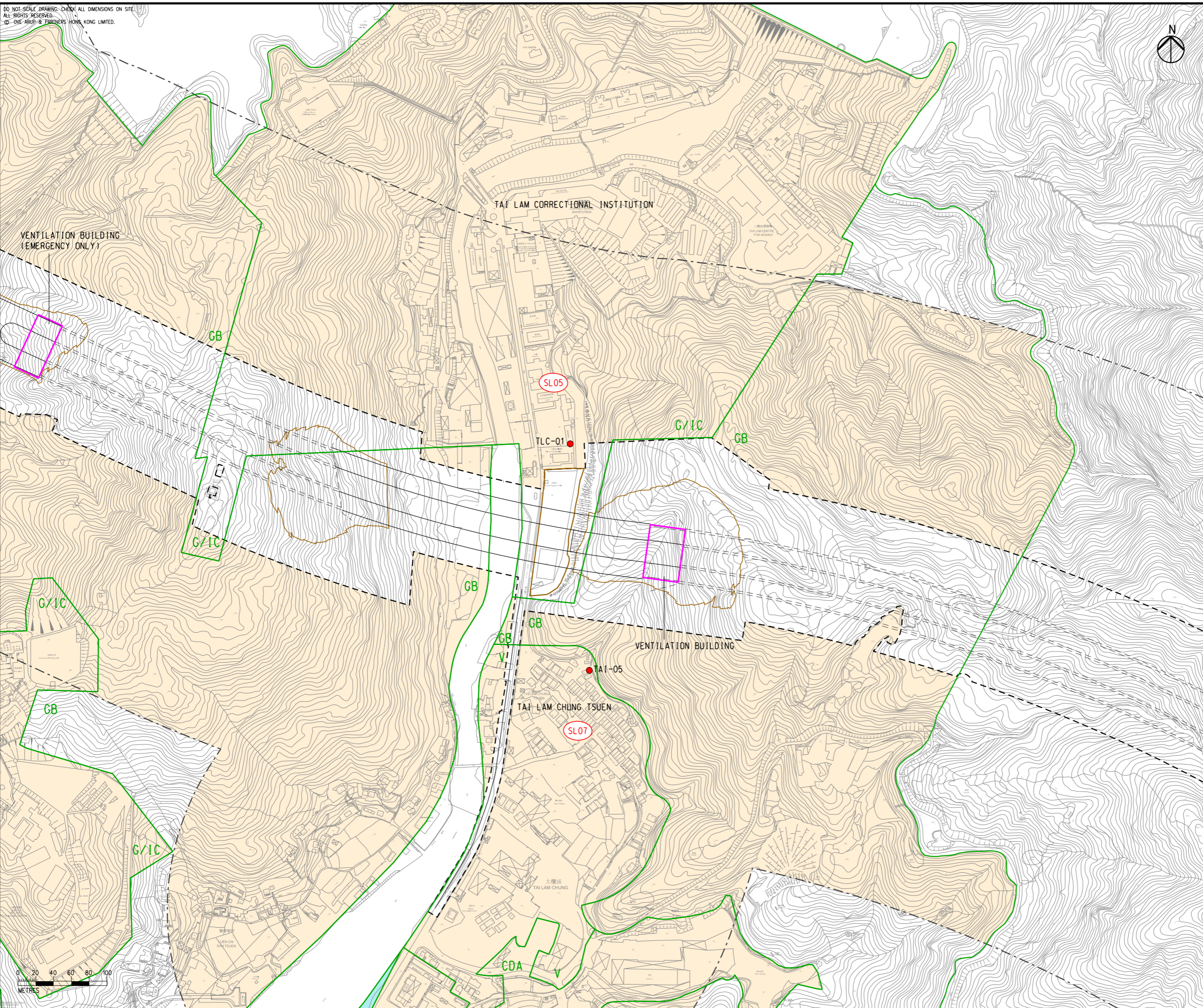
DO NOT SCALE DRAWING. CHECK ALL DIMENSIONS ON SITE.
 ALL RIGHTS RESERVED.
 © OVE ARUP & PARTNERS HONG KONG LIMITED.



EIA Report\Figure 4.6e - Locations of NSRs and Selected Representative NAPs for Fixed Noise Impact Assessment.dgn

28/8/2023

Printed by : richard-kh.lau
 Filename :



LEGEND

- PROPOSED ELEVATED/ AT-GRADE ROAD (TENTATIVE ALIGNMENT)
- PROPOSED TUNNEL (TENTATIVE ALIGNMENT)
- HIGHWAY/ TUNNEL OPERATION AND MAINTENANCE FACILITIES
- PROJECT ELEMENT
- SITE BOUNDARY
- 300m ASSESSMENT AREA FOR FIXED NOISE
- COMMITTED/PLANNED DEVELOPMENTS
- NOISE SENSITIVE RECEIVER AREA
- NON-NOISE SENSITIVE USE
- EXISTING NOISE SENSITIVE RECEIVER (NSR)
- EXISTING NOISE ASSESSMENT POINT (NAP)
- OUTLINE ZONING PLAN

NOTE:
 EXISTING PREMISES OR PLACE WITHIN THE SITE BOUNDARY TO BE RESUMED OR ALLOCATED ARE NOT CONSIDERED AS NSRs.

Rev	Description	By	Date
D	FOURTH ISSUE	GL	08/23
C	THIRD ISSUE	GL	07/23
B	SECOND ISSUE	GL	06/23
A	FIRST ISSUE	GL	04/23

Consultant
ARUP

Project Title
ROUTE 11
 (SECTION BETWEEN YUEN LONG AND NORTH LANTAU) - INVESTIGATION

Drawing title
LOCATIONS OF NSRS AND SELECTED REPRESENTATIVE NAPs FOR FIXED NOISE IMPACT ASSESSMENT

Drawing no. FIGURE 4.6e		Rev. D	
Drawn GL	Date 08/23	Checked TL	Approved FC
Scale 1:4000 @ A3		Status PRELIMINARY	



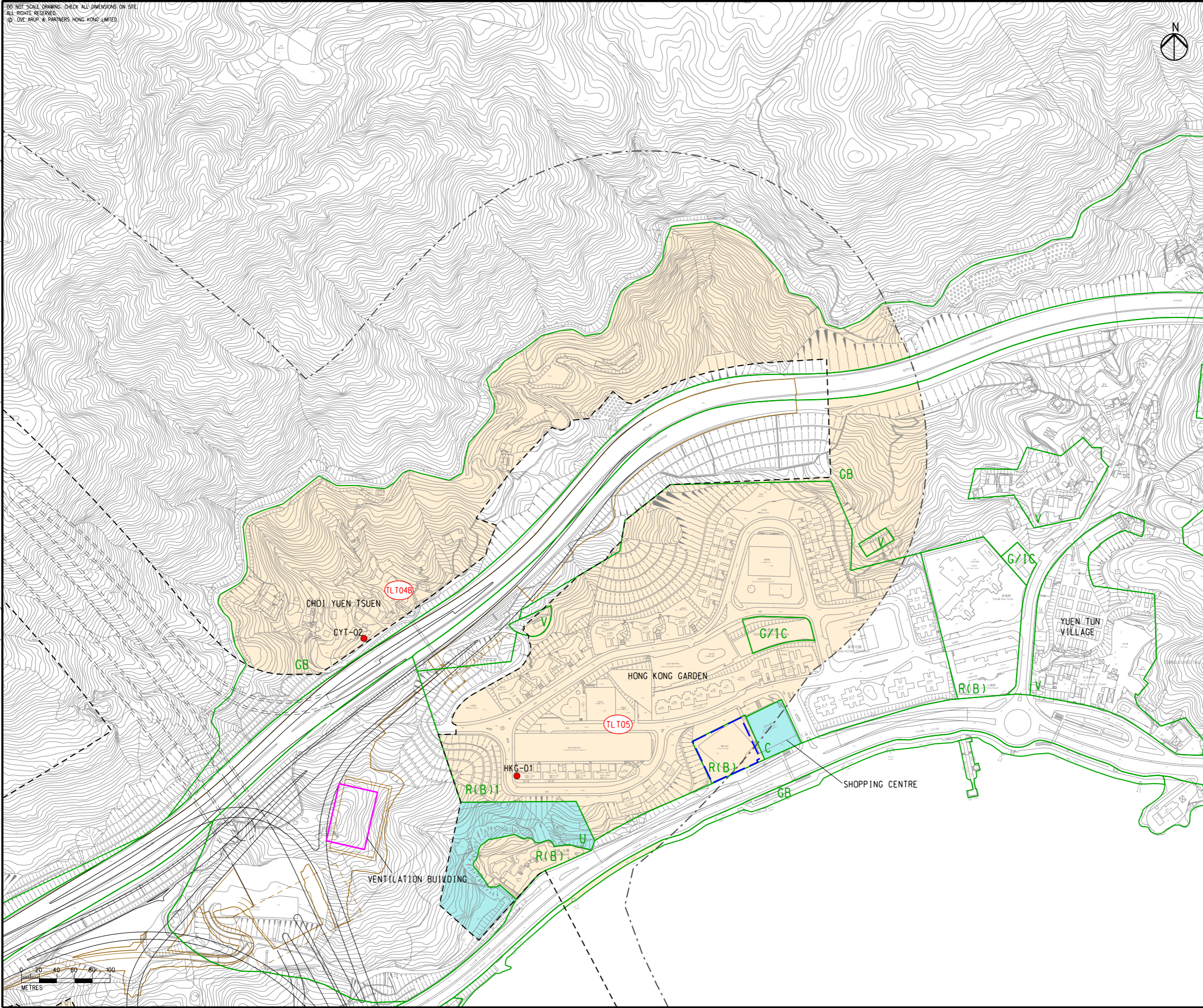
COPYRIGHT RESERVED

DO NOT SCALE DRAWING. CHECK ALL DIMENSIONS ON SITE.
 ALL RIGHTS RESERVED.
 © OVE ARUP & PARTNERS HONG KONG LIMITED.

EIA Report\Figure 4.6f - Locations of NSRs and Selected Representative NAPs for Fixed Noise Impact Assessment.dgn

28/8/2023

Printed by : richard-kh.lau
 Filename :



- LEGEND**
- PROPOSED ELEVATED/ AT-GRADE ROAD (TENTATIVE ALIGNMENT)
 - PROPOSED TUNNEL (TENTATIVE ALIGNMENT)
 - HIGHWAY/ TUNNEL OPERATION AND MAINTENANCE FACILITIES
 - PROJECT ELEMENT
 - SITE BOUNDARY
 - 300m ASSESSMENT AREA FOR FIXED NOISE
 - COMMITTED/PLANNED DEVELOPMENTS
 - NOISE SENSITIVE RECEIVER AREA
 - NON-NOISE SENSITIVE USE
 - E1 EXISTING NOISE SENSITIVE RECEIVER (NSR)
 - EXISTING NOISE ASSESSMENT POINT (NAP)
 - OUTLINE ZONING PLAN

NOTE:
 EXISTING PREMISES OR PLACE WITHIN THE SITE BOUNDARY TO BE RESUMED OR ALLOCATED ARE NOT CONSIDERED AS NSRs.

Rev	Description	By	Date
D	FOURTH ISSUE	GL	08/23
C	THIRD ISSUE	GL	07/23
B	SECOND ISSUE	GL	06/23
A	FIRST ISSUE	GL	04/23

Consultant
ARUP

Project Title
ROUTE 11
 (SECTION BETWEEN YUEN LONG AND NORTH LANTAU) - INVESTIGATION

Drawing title
LOCATIONS OF NSRS AND SELECTED REPRESENTATIVE NAPs FOR FIXED NOISE IMPACT ASSESSMENT

Drawing no. FIGURE 4.6f		Rev. D	
Drawn GL	Date 08/23	Checked TL	Approved FC
Scale 1:4000 @ A3		Status PRELIMINARY	

COPYRIGHT RESERVED

路政署
HIGHWAYS
DEPARTMENT

DO NOT SCALE DRAWING. CHECK ALL DIMENSIONS ON SITE.
 ALL RIGHTS RESERVED.
 © OVE ARUP & PARTNERS HONG KONG LIMITED.



- LEGEND**
- PROPOSED ELEVATED/ AT-GRADE ROAD (TENTATIVE ALIGNMENT)
 - PROPOSED TUNNEL (TENTATIVE ALIGNMENT)
 - HIGHWAY/ TUNNEL OPERATION AND MAINTENANCE FACILITIES
 - PROJECT ELEMENT
 - SITE BOUNDARY
 - 300m ASSESSMENT AREA FOR FIXED NOISE
 - COMMITTED/PLANNED DEVELOPMENTS
 - NOISE SENSITIVE RECEIVER AREA
 - NON-NOISE SENSITIVE USE
 - EXISTING NOISE SENSITIVE RECEIVER (NSR)
 - EXISTING NOISE ASSESSMENT POINT (NAP)
 - OUTLINE ZONING PLAN

NOTE:
 EXISTING PREMISES OR PLACE WITHIN THE SITE BOUNDARY TO BE RESUMED OR ALLOCATED ARE NOT CONSIDERED AS NSRS.

Rev	Description	By	Date
D	FOURTH ISSUE	GL	08/23
C	THIRD ISSUE	GL	07/23
B	SECOND ISSUE	GL	06/23
A	FIRST ISSUE	GL	04/23

Consultant
ARUP

Project Title
**ROUTE 11
 (SECTION BETWEEN YUEN LONG
 AND NORTH LANTAU) -
 INVESTIGATION**

Drawing title
**LOCATIONS OF NSRS AND
 SELECTED REPRESENTATIVE
 NAPS FOR FIXED NOISE
 IMPACT ASSESSMENT**

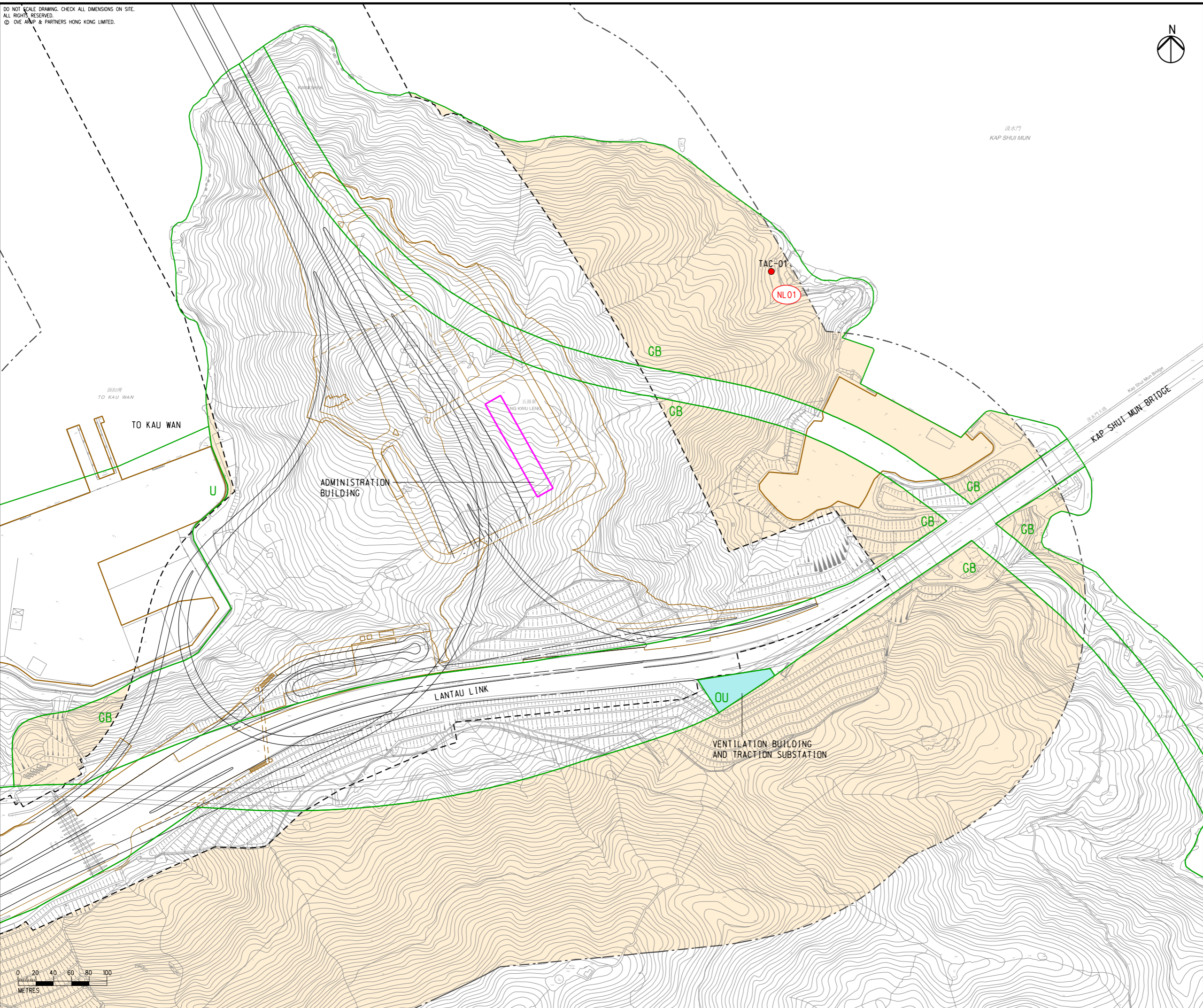
Drawing no. FIGURE 4.6g		Rev. D	
Drawn GL	Date 08/23	Checked TL	Approved FC
Scale 1:4000 @ A3		Status PRELIMINARY	



EIA Report\Figure 4.6g - Locations of NSRs and Selected Representative NAPS for Fixed Noise Impact Assessment.dgn

28/8/2023

Printed by : richard-kh.lau
 Filename :



NSR ID ^[1]	OZP Land Use	Description	Use ^[2]	Number of Storeys	NAP ID
Existing NSRs					
a. Lam Tei					
LT12B	OU	Area at/near Fu Tei Ha Tsuen	R	1-3	FTT-01
b. So Kwun Wat / Siu Lam/ Tai Lam					
SKW01A	GB	Area at/near So Kwun Wat Tsuen	R	1-3	SKW-04
SL01A	GB	Area at/near So Kwun Wat San Tsuen	R	1-3	SKS-01
SL02	GB	Area at/near Siu Lam	R	1-3	SIU-13
SL05	GIC	Tai Lam Correctional Institution Dormitory	R	1-6	TLC-01
SL07	V	Area at/near Tai Lam Chung Tsuen	R	1-3	TAI-05
c. Tsing Lung Tau					
TLT04B	GB	Area at/near Choi Yuen Tsuen	R	1-3	CYT-02
TLT05	R(B)1	Hong Kong Garden	R	20-29	HKG-01
d. North Lantau					
NL01	GB	Area at/near Tai Chuen	R	2	TAC-01

Notes:

[1]	The assessment will only include NSRs which rely on opened windows for ventilation and within 300m assessment area.
[2]	R-Residential

B	SECOND ISSUE	GL	08/23
A	FIRST ISSUE	GL	06/23
Rev	Description	By	Date
Consultant			
ARUP			
Project Title			
ROUTE 11 (SECTION BETWEEN YUEN LONG AND NORTH LANTAU) - INVESTIGATION			
Drawing title			
LOCATIONS OF NSRS AND SELECTED REPRESENTATIVE NAPS FOR FIXED NOISE IMPACT ASSESSMENT			
Drawing no. FIGURE 4.6h			Rev. B
Drawn GL	Date 08/23	Checked TL	Approved FC
Scale		Status PRELIMINARY	

COPYRIGHT RESERVED

