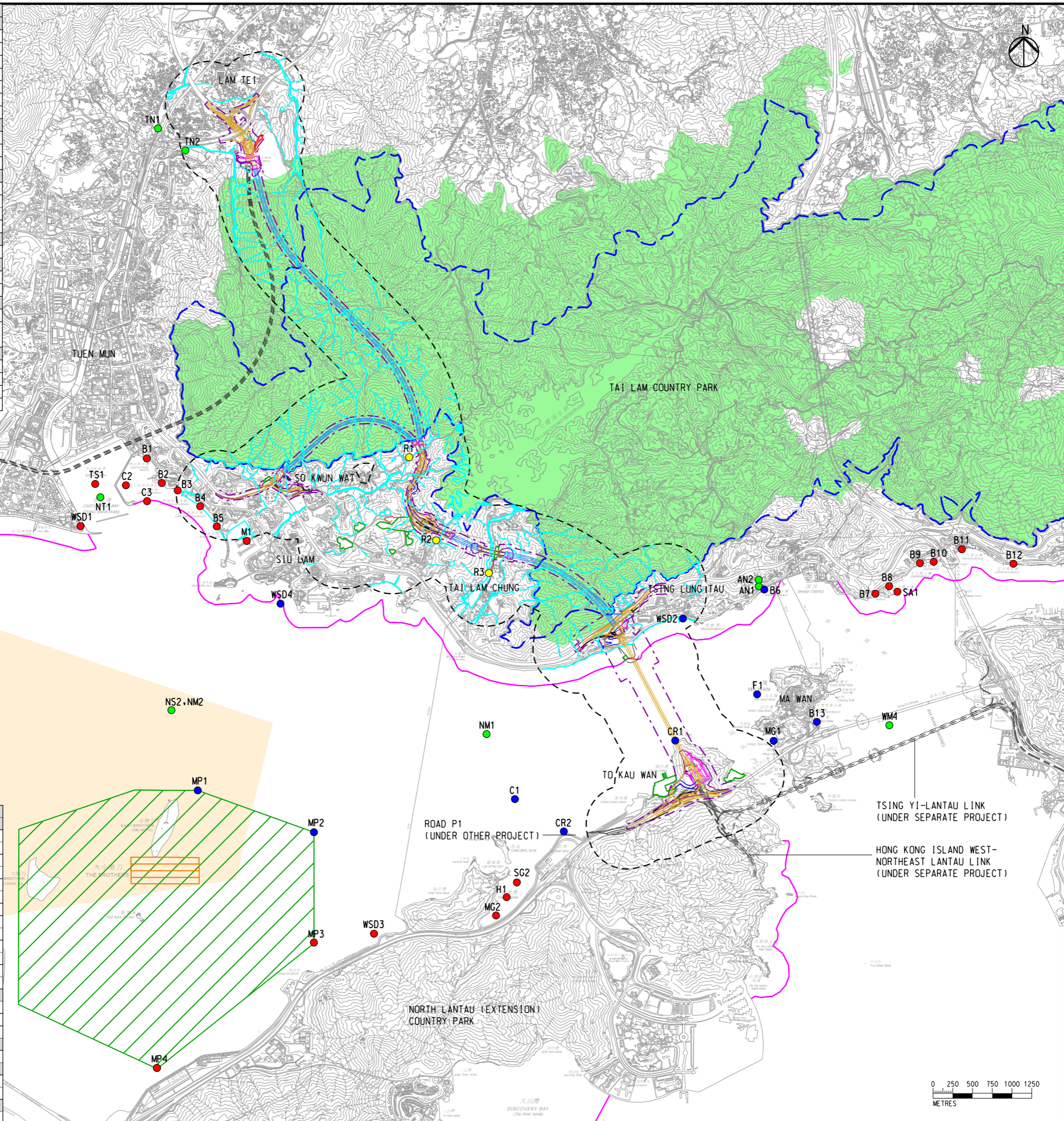


ID	Description
<b>Water Pumping Stations/Cooling Water Intakes</b>	
C1	Seawater Intake for Future Sunny Bay Development
C2	ASD Tuen Mun Hospital
C3	EMSD Sam Shing Estate
WSD1	Tuen Mun Salt Water Pumping Station
WSD2	Salt Water Pumping Station near Hong Kong Garden
WSD3	Sunny Bay Salt Water Pumping Station
WSD4	Salt Water Pumping Station near Lok On Pai
<b>Typhoon Shelter/Sheltered Anchorages</b>	
SA1	Ting Kau Sheltered Anchorages
TS1	Tuen Mun Typhoon Shelter
M1	Gold Coast Marina and Country Club
<b>Marine Park Indicator Points</b>	
MP1	The Brothers Marine Park Indicator Point 1
MP2	The Brothers Marine Park Indicator Point 2
MP3	The Brothers Marine Park Indicator Point 3
MP4	The Brothers Marine Park Indicator Point 4
<b>Country Park</b>	
CP1	Tai Lam Country Park
<b>Rivers</b>	
RIV1	Tuen Mun River
RIV2	Tai Lam Chung River
<b>Fish Culture Zone</b>	
F1	Ma Wan Fish Culture Zone
F2	Spawning ground of commercial fisheries resources in North Lantau Water
<b>Water Gathering Ground and Reservoirs</b>	
RSV1	Lam Tei Irrigation Reservoir
RSV2	Hung Shui Hang Irrigation Reservoir
RSV3	Tai Lam Chung Reservoir
WG1	Water Gathering Ground

ID	Description
<b>Beaches</b>	
B1	Castle Peak Beach
B2	Kadoorie Beach
B3	Cafeteria Old Beach
B4	Cafeteria New Beach
B5	Golden Beach
B6	Anglers' Beach
B7	Gemini Beaches
B8	Hoi Mei Wan Beach
B9	Casam Beach
B10	Lido Beach
B11	Ting Kau Beach
B12	Approach Beach
B13	Ma Wan Tung Wan Beach
<b>Corals/Artificial Reefs</b>	
CR1	Corals at To Kau Wan
CR2	Corals at Sunny Bay
AR1	Artificial Reefs in The Brothers Marine Park
<b>Horseshoe Crabs</b>	
H1	Horseshoe Crabs Area at Yam O
<b>Mangroves</b>	
MG1	Mangrove near Ma Wan
MG2	Mangrove near Yam O
<b>Seagrass Beds</b>	
SG2	Seagrass Beds near Yam O



LEGEND	
	PROPOSED ELEVATED/ AT-GRADE ROAD
	PROPOSED TUNNEL
	PLANNED ROAD NETWORK (UNDER SEPARATE PROJECTS)
	TEMPORARY WORKS AREA
	TEMPORARY EXPLOSIVE MAGAZINES
	PROPOSED HIGHWAY/ TUNNEL OPERATION AND MAINTENANCE FACILITIES
	EARTHWORK AREA
	CONSTRUCTION HAUL ROAD
	TEMPORARY BARGING POINT
	SITE BOUNDARY
	500m ASSESSMENT AREA
	COUNTRY PARK
	THE BROTHERS MARINE PARK
	ARTIFICIAL REEFS IN THE BROTHERS MARINE PARK
	SECONDARY CONTACT RECREATION SUBZONES
	SPAWNING GROUND OF COMMERCIAL FISHERIES RESOURCES IN NORTH LANTAU WATER
	WATER GATHERING GROUND
	WATERCOURSE
	WATER SENSITIVE RECEIVER
	OBSERVATION POINT
	EPD MONITORING STATION
	ADDITIONAL INLAND WATER QUALITY SAMPLING LOCATION

Rev	Description	By	Date
C	THIRD ISSUE	GL	08/23
B	SECOND ISSUE	GL	06/23
A	FIRST ISSUE	GL	04/23

Consultant  
**ARUP**

Project Title  
**ROUTE 11  
(SECTION BETWEEN YUEN LONG AND NORTH LANTAU) - INVESTIGATION**

Drawing title  
**LOCATIONS OF WATER SENSITIVE RECEIVERS**

Drawing no.	Rev.		
<b>FIGURE 5.1</b>	<b>C</b>		
Drawn GL	Date 08/23	Checked TL	Approved FC
Scale 1:50000 @ A3	Status PRELIMINARY		