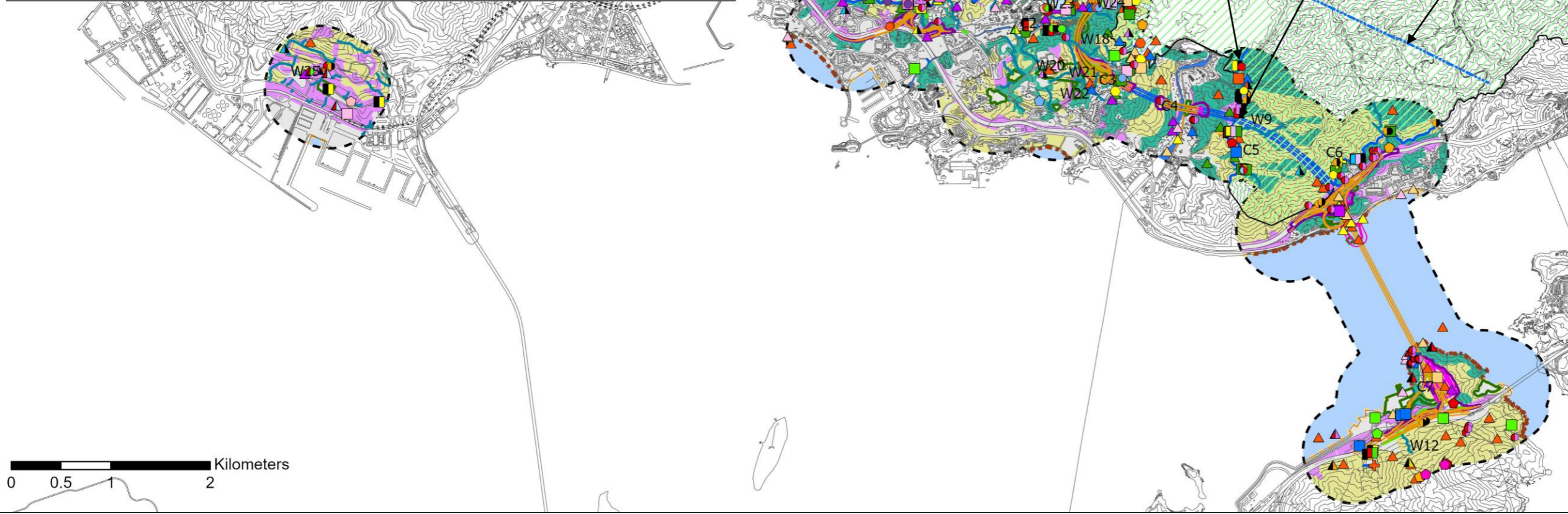




- |                                     |                             |                             |                                     |
|-------------------------------------|-----------------------------|-----------------------------|-------------------------------------|
| ● <i>Ania hongkongensis</i>         | ▲ Collared Scops Owl        | ◆ Painted Lady              | ■ Lesser Spiny Frog                 |
| ● <i>Aquilaria sinensis</i>         | ▲ Common Emerald Dove       | ◆ Plain Hedge Blue          | ■ Romer's Tree Frog                 |
| ● <i>Artabotrys hongkongensis</i>   | ▲ Crested Serpent Eagle     | ◆ Blue Chaser               | ■ Spotted Narrow-mouthed Frog       |
| ● <i>Arundina graminifolia</i>      | ▲ Eastern Buzzard           | ◆ Dancing Shadow-emerald    | ■ Two-striped Grass Frog            |
| ● <i>Ceratopteris thalictroides</i> | ▲ Greater Coucal            | ◆ Dingy Dusk-hawker         | ■ Chinese Horseshoe Bat             |
| ● <i>Cibotium barometz</i>          | ▲ Great Egret               | ◆ Emerald Cascader          | ■ Chinese Noctule                   |
| ● <i>Cyclobalanopsis chungii</i>    | ▲ Grey Nightjar             | ◆ Guangdong Hooktail        | ■ Chinese Pipistrelle               |
| ● <i>Cyclobalanopsis edithiae</i>   | ▲ Indochinese Yuhina        | ◆ Sapphire Flutterer        | ■ East Asian Porcupine              |
| ● <i>Diospyros vaccinioides</i>     | ▲ Japanese Quail            | ◆ Scarlet Basker            | ■ Himalayan Leaf-nosed Bat          |
| ● <i>Enkianthus quinqueflorus</i>   | ▲ Lesser Coucal             | ◆ South China Grappletail   | ■ Intermediate Horseshoe Bat        |
| ● <i>Geodorum densiflorum</i>       | ▲ Little Egret              | ◆ White-banded Shadowdamsel | ■ Japanese Pipistrelle              |
| ● <i>Malaxis latifolia</i>          | ▲ Pacific Reef Heron        | ◆ Banded Krait              | ■ Least Horseshoe Bat               |
| ● <i>Nepenthes mirabilis</i>        | ▲ Pacific Swift             | ◆ Chinese Hooktail          | ■ Least Pipistrelle                 |
| ● <i>Ormosia emarginata</i>         | ▲ Rufous-capped Babbler     | ◆ Common Rat Snake          | ■ Leopard Cat                       |
| ● <i>Ormosia semicastrata</i>       | ▲ Siberian Blue Robin       | ◆ Common Wolf Snake         | ■ Leschenault's Rousette            |
| ● <i>Pavetta hongkongensis</i>      | ▲ Slaty-legged Crane        | ◆ Copperhead Racer          | ■ Masked Palm Civet                 |
| ● <i>Rhododendron simsii</i>        | ▲ Striated Heron            | ◆ Burmese Python            | ■ Chinese Noctule                   |
| ● <i>Scirpus ternatanus</i>         | ▲ White-bellied Sea Eagle   | ◆ Four-clawed Gecko         | ■ Pallas's Squirrel                 |
| ● <i>Selenodesmium siamense</i>     | ▲ White-throated Kingfisher | ◆ Indian Forest Skink       | ■ Red Muntjac                       |
| ● <i>Thysanotus chinensis</i>       | ▲ Broad Spark               | ◆ Mountain Water Snake      | ■ Short-nosed Fruit Bat             |
| ▲ Black Kite                        | ◆ Danaid Eggfly             | ◆ Taiwan Kukri Snake        | ■ Unidentified bat                  |
| ▲ Black-crowned Night Heron         | ◆ Malayan                   | ◆ White-spotted Slug Snake  | ■ <i>Cryptotamias anacoluthon</i>   |
| ▲ Black-throated Laughingthrush     | ◆ Metallic Cerulean         | ◆ Brown Wood Frog           | ■ <i>Nanhaipotamon hongkongense</i> |
| ▲ Brown Fish Owl                    | ◆ Small Cabbage White       | ◆ Chinese Bullfrog          | ■ <i>Parazacco spilurus</i>         |
| ▲ Chinese Pond Heron                | ◆ Swallowtail               | ◆ Hong Kong Cascade Frog    | ■ <i>Somaniathelphusa zankion</i>   |

- Legend**
- PROPOSED ELEVATED / AT-GRADE ROAD
  - PROPOSED TUNNEL
  - PROPOSED HIGHWAY / TUNNEL OPERATION AND MAINTENANCE FACILITIES
  - OTHER PROJECT ELEMENTS
  - SLOPE WORKS
  - CONSTRUCTION WORKS AREA / HAUL ROAD / EXPLOSIVE MAGAZINE
  - - - ASSESSMENT AREA
  - TAI LAM COUNTRY PARK
  - AGRICULTURAL LAND
  - BACKSHORE
  - CHANNEL
  - DEVELOPED AREA
  - FUNG SHUI WOODLAND
  - MIXED WOODLAND
  - PLANTATION
  - RESERVOIR
  - SEA
  - SHRUBLAND/GRASSLAND
  - WATERCOURSE
  - SEAWALL
  - NATURAL COASTLINE



B	SECOND ISSUE	6/23
A	FIRST ISSUE	1/23
Rev	Description	By Date

Consultant  
**ARUP**

Project title  
Route 11 (Section between Yuen Long and North Lantau)

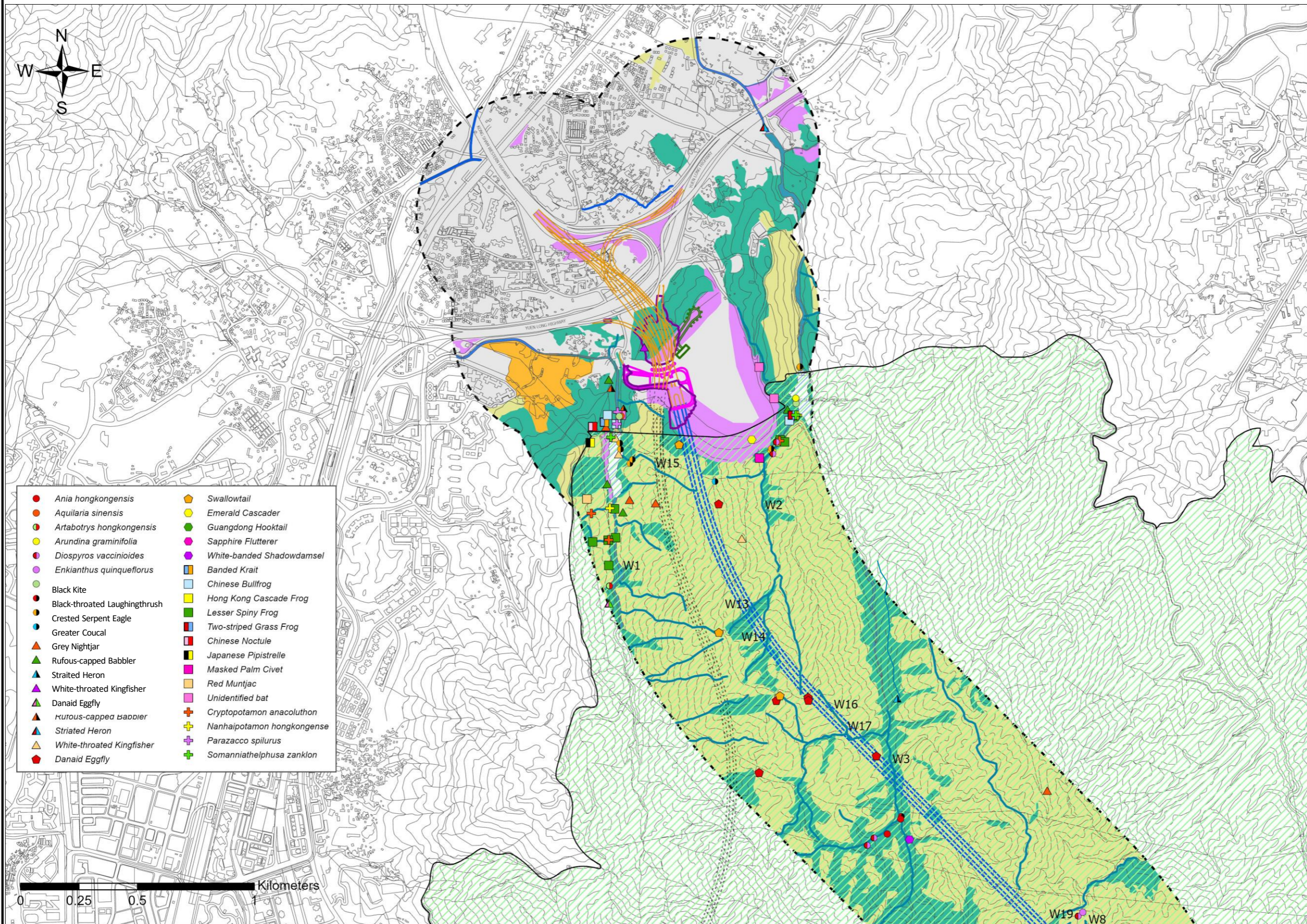
Drawing title  
HABITATS WITHIN THE ASSESSMENT AREA

Drawing no.	FIGURE 9.4	Rev.	B
Drawn	Date	Checked	Approved
Scale	Status	PRELIMINARY	

COPYRIGHT RESERVED  
**路政署 HIGHWAYS DEPARTMENT**

Note/Abbreviation

- The location of *Gnetum luofuense* is not pinpointed, it this species was commonly recorded within the assessment area. The location of the recorded *Begonia hongkongensis* is not pinpointed on this and the following figures to avoid poachers from collecting this species. The location of *Ixonanthes reticulata* in Tin Hau Temple Fung Shui Woodland and Ching Uk Tsuen Fung Shui Woodland is not pinpointed, as it was commonly recorded therein.
- Owing to scale difference, the approximate location of the ditch within the western portal of SKWLR is not shown in Figure 9.2 but in Figures 9.4B, 9.4C and 9.4D.
- TLC Catchwater Tunnel Nos. 1, 6, 7 and 8 are known bat roosting grounds, while TLC Catchwater Tunnel No. 5 could be a possible bat roosting ground.



- |                                    |                                     |
|------------------------------------|-------------------------------------|
| ● <i>Ania hongkongensis</i>        | ◆ Swallowtail                       |
| ● <i>Aquilaria sinensis</i>        | ● Emerald Cascader                  |
| ● <i>Artabotrys hongkongensis</i>  | ● Guangdong Hooktail                |
| ● <i>Arundina graminifolia</i>     | ● Sapphire Flutterer                |
| ● <i>Diospyros vaccinioides</i>    | ● White-banded Shadowdamsel         |
| ● <i>Enkianthus quinqueflorus</i>  | ■ Banded Krait                      |
| ● Black Kite                       | ■ Chinese Bullfrog                  |
| ● Black-throated Laughingthrush    | ■ Hong Kong Cascade Frog            |
| ● Crested Serpent Eagle            | ■ Lesser Spiny Frog                 |
| ● Greater Coucal                   | ■ Two-striped Grass Frog            |
| ● Grey Nightjar                    | ■ Chinese Noctule                   |
| ● Rufous-capped Babbler            | ■ Japanese Pipistrelle              |
| ● Straited Heron                   | ■ Masked Palm Civet                 |
| ● White-throated Kingfisher        | ■ Red Muntjac                       |
| ▲ Danaid Eggfly                    | ■ Unidentified bat                  |
| ▲ <i>Rufous-capped Babbler</i>     | ■ <i>Cryptopotamon anacoluthon</i>  |
| ▲ <i>Straited Heron</i>            | ■ <i>Nanhaipotamon hongkongense</i> |
| ▲ <i>White-throated Kingfisher</i> | ■ <i>Parazacco spilurus</i>         |
| ▲ Danaid Eggfly                    | ■ <i>Somanniathelphusa zanklon</i>  |

- Legend**
- PROPOSED ELEVATED / AT-GRADE ROAD
  - PROPOSED TUNNEL
  - PROPOSED HIGHWAY / TUNNEL OPERATION AND MAINTENANCE FACILITIES
  - OTHER PROJECT ELEMENTS
  - SLOPE WORKS
  - CONSTRUCTION WORKS AREA / HAUL ROAD / EXPLOSIVE MAGAZINE
  - ASSESSMENT AREA
  - TAI LAM COUNTRY PARK
  - AGRICULTURAL LAND
  - CHANNEL
  - DEVELOPED AREA
  - MIXED WOODLAND
  - PLANTATION
  - SHRUBLAND/GRASSLAND
  - WATERCOURSE

Rev	Description	By	Date
B	SECOND ISSUE		6/23
A	FIRST ISSUE		1/23

Consultant  
**ARUP**

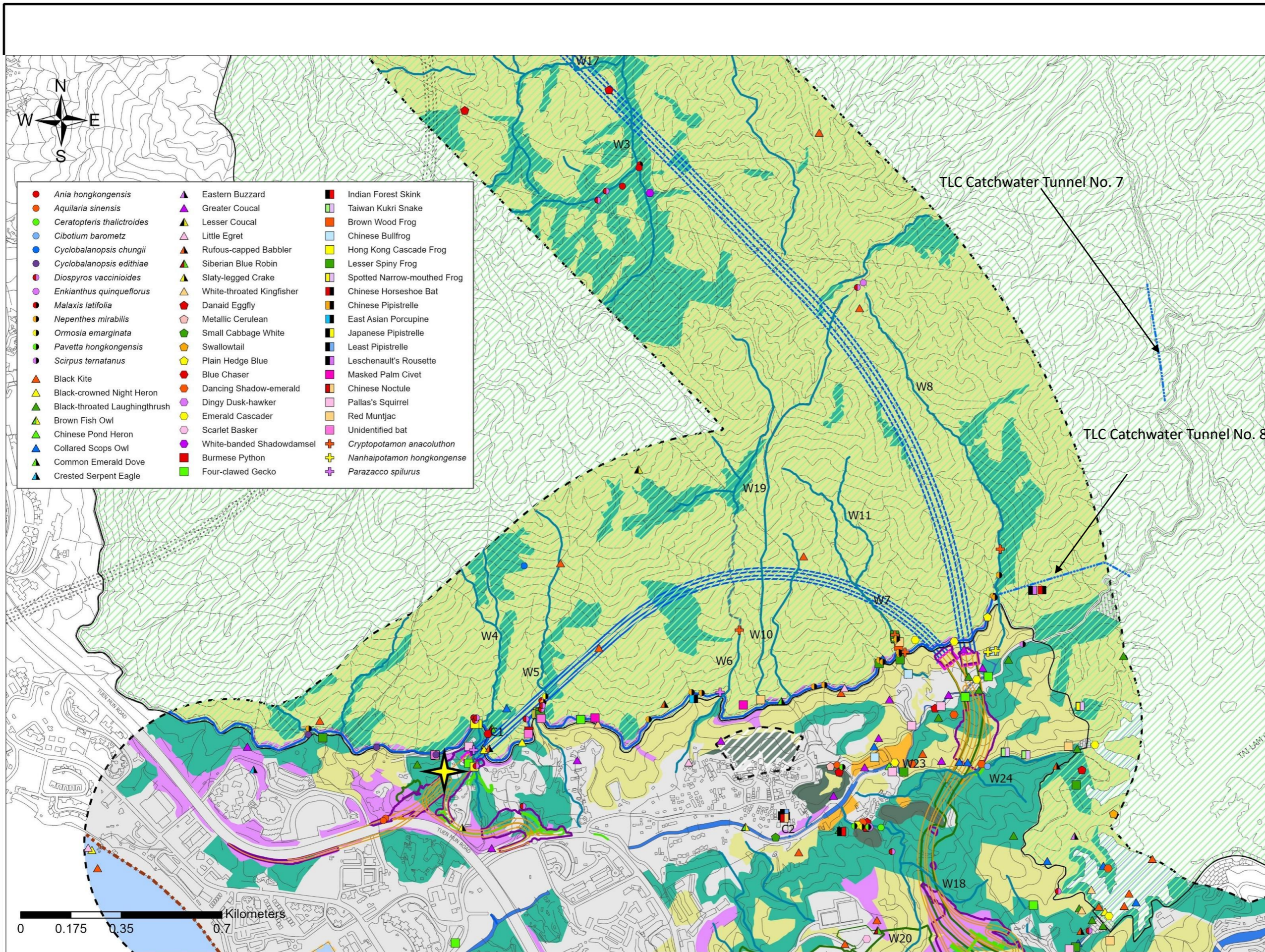
Project title  
Route 11 (Section between Yuen Long and North Lantau)

Drawing title  
HABITATS AND SPECIES OF CONSERVATION IMPORTANCE RECORDED WITHIN THE ASSESSMENT AREA DURING THE ECOLOGICAL SURVEYS – LAM TEI

Drawing no.	FIGURE 9.4A	Rev.	B
Drawn	Date	Checked	Approved
Scale	Status	PRELIMINARY	

**Note**

- The location of *Gnetum luofuense* is not pinpointed as it was commonly recorded within the assessment area during the ecological surveys.



- |                                     |                             |                                     |
|-------------------------------------|-----------------------------|-------------------------------------|
| ● <i>Ania hongkongensis</i>         | ▲ Eastern Buzzard           | ■ Indian Forest Skink               |
| ● <i>Aquilaria sinensis</i>         | ▲ Greater Coucal            | ■ Taiwan Kukri Snake                |
| ● <i>Ceratopteris thalictroides</i> | ▲ Lesser Coucal             | ■ Brown Wood Frog                   |
| ● <i>Cibotium barometz</i>          | ▲ Little Egret              | ■ Chinese Bullfrog                  |
| ● <i>Cyclobalanopsis chungii</i>    | ▲ Rufous-capped Babbler     | ■ Hong Kong Cascade Frog            |
| ● <i>Cyclobalanopsis edithiae</i>   | ▲ Siberian Blue Robin       | ■ Lesser Spiny Frog                 |
| ● <i>Diospyros vaccinioides</i>     | ▲ Slaty-legged Crake        | ■ Spotted Narrow-mouthed Frog       |
| ● <i>Enkianthus quinqueflorus</i>   | ▲ White-throated Kingfisher | ■ Chinese Horseshoe Bat             |
| ● <i>Malaxis latifolia</i>          | ▲ Danaid Eggfly             | ■ Chinese Pipistrelle               |
| ● <i>Nepenthes mirabilis</i>        | ▲ Metallic Cerulean         | ■ East Asian Porcupine              |
| ● <i>Ormosia emarginata</i>         | ▲ Small Cabbage White       | ■ Japanese Pipistrelle              |
| ● <i>Pavetta hongkongensis</i>      | ▲ Swallowtail               | ■ Least Pipistrelle                 |
| ● <i>Scirpus ternatanus</i>         | ▲ Plain Hedge Blue          | ■ Leschenault's Roussette           |
| ▲ Black Kite                        | ● Blue Chaser               | ■ Masked Palm Civet                 |
| ▲ Black-crowned Night Heron         | ● Dancing Shadow-emerald    | ■ Chinese Noctule                   |
| ▲ Black-throated Laughingthrush     | ● Dingy Dusk-hawker         | ■ Pallas's Squirrel                 |
| ▲ Brown Fish Owl                    | ● Emerald Cascader          | ■ Red Muntjac                       |
| ▲ Chinese Pond Heron                | ● Scarlet Basker            | ■ Unidentified bat                  |
| ▲ Collared Scops Owl                | ● White-banded Shadowdamsel | ■ <i>Cryptotamodon anacolutum</i>   |
| ▲ Common Emerald Dove               | ● Burmese Python            | ■ <i>Nanhaipotamon hongkongense</i> |
| ▲ Crested Serpent Eagle             | ● Four-clawed Gecko         | ■ <i>Parazacco spilurus</i>         |

- Legend**
- PROPOSED ELEVATED / AT-GRADE ROAD
  - PROPOSED TUNNEL
  - PROPOSED HIGHWAY / TUNNEL OPERATION AND MAINTENANCE FACILITIES
  - OTHER PROJECT ELEMENTS
  - SLOPE WORKS
  - CONSTRUCTION WORKS AREA / HAUL ROAD / EXPLOSIVE MAGAZINE
  - - - ASSESSMENT AREA
  - ▨ TAI LAM COUNTRY PARK
  - AGRICULTURAL LAND
  - CHANNEL
  - DEVELOPED AREA
  - FUNG SHUI WOODLAND
  - MIXED WOODLAND
  - PLANTATION
  - RESERVOIR
  - SEA
  - SHRUBLAND/GRASSLAND
  - WATERCOURSE
  - - - NATURAL COASTLINE

Rev	Description	By	Date
B	SECOND ISSUE		6/23
A	FIRST ISSUE		1/23

Consultant  
**ARUP**

Project title  
Route 11 (Section between Yuen Long and North Lantau)

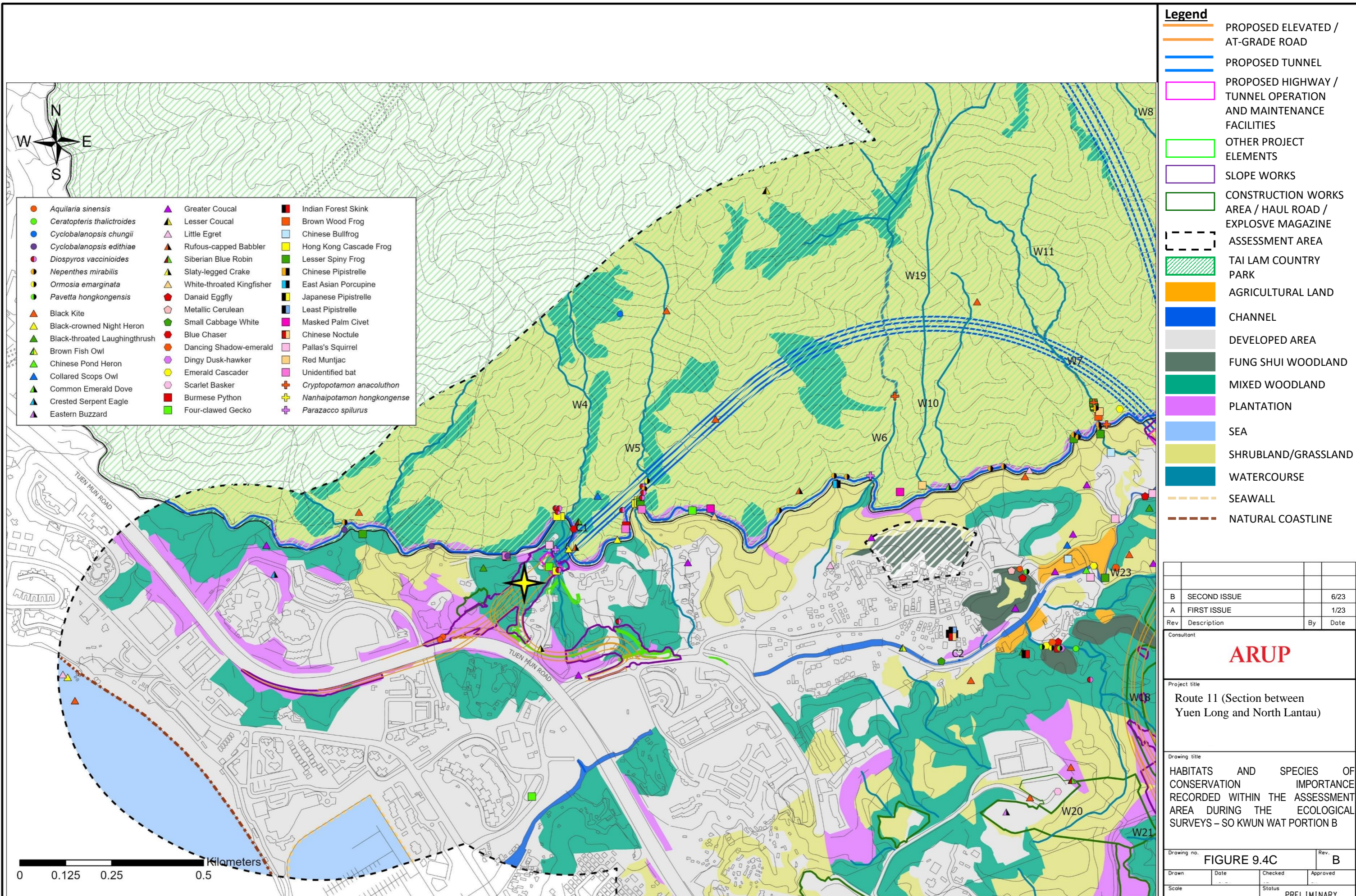
Drawing title  
HABITATS AND SPECIES OF CONSERVATION IMPORTANCE RECORDED WITHIN THE ASSESSMENT AREA DURING THE ECOLOGICAL SURVEYS – SO KWUN WAT PORTION A

Drawing no.	FIGURE 9.4B	Rev.	B
Drawn	Date	Checked	Approved
Scale	Status	PRELIMINARY	

COPYRIGHT RESERVED  
**路政署 HIGHWAYS DEPARTMENT**

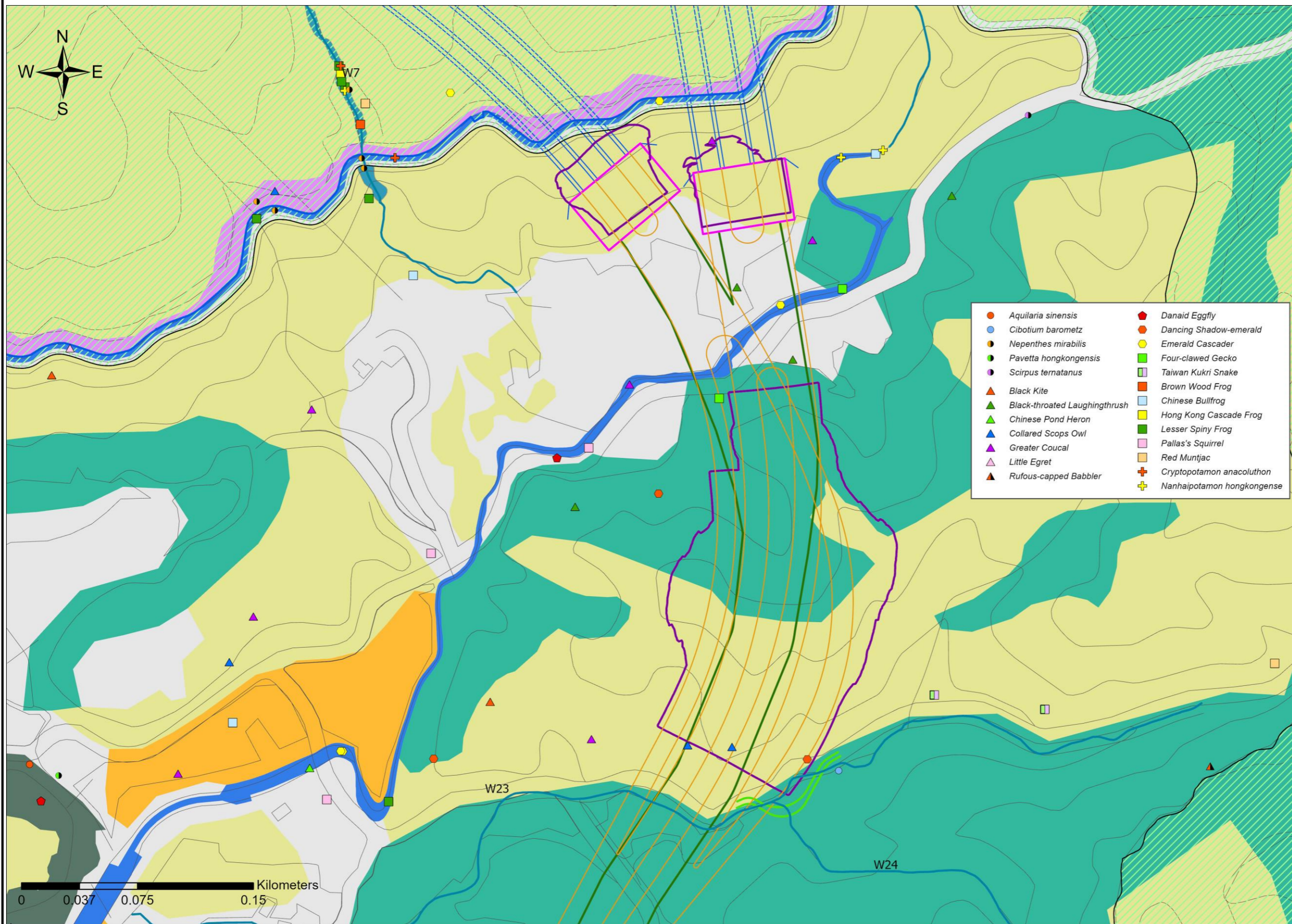
**Note/Abbreviation**

- TLC: Tai Lam Chung
- TLC Catchwater Tunnel Nos. 7 and 8 are known bat roosting grounds.
- The location of *Gnetum luofuense* is not pinpointed as it was commonly recorded within the assessment area during the ecological surveys. The location of the recorded *Ixonanthes reticulata* in Tin Hau Temple Fung Shui Woodland and Ching Uk Tsuen Fung Shui Woodland is not pinpointed, as this species was abundantly recorded there.
- The approximate location of the ditch within the western portal of SKWLR is pinpointed by a four-point star



**Note**

- The location of *Gnetum luofuense* is not pinpointed as it was commonly recorded within the assessment area during the ecological surveys. The location of the recorded *Ixonanthes reticulata* in Tin Hau Temple Fung Shui Woodland and Ching Uk Tsuen Fung Shui Woodland is not pinpointed, as this species was abundantly recorded there.
- The approximate location of the ditch within the western portal of SKWLR is pinpointed by a four-point star



- |  |                                     |
|--|-------------------------------------|
| ● <i>Aquilaria sinensis</i>            | ● <i>Danaid Eggfly</i>              |
| ● <i>Cibotium barometz</i>             | ● <i>Dancing Shadow-emerald</i>     |
| ● <i>Nepenthes mirabilis</i>           | ● <i>Emerald Cascader</i>           |
| ● <i>Pavetta hongkongensis</i>         | ● <i>Four-clawed Gecko</i>          |
| ● <i>Scirpus ternatanus</i>            | ● <i>Taiwan Kukri Snake</i>         |
| ▲ <i>Black Kite</i>                    | ● <i>Brown Wood Frog</i>            |
| ▲ <i>Black-throated Laughingthrush</i> | ● <i>Chinese Bullfrog</i>           |
| ▲ <i>Chinese Pond Heron</i>            | ● <i>Hong Kong Cascade Frog</i>     |
| ▲ <i>Collared Scops Owl</i>            | ● <i>Lesser Spiny Frog</i>          |
| ▲ <i>Greater Coucal</i>                | ● <i>Pallas's Squirrel</i>          |
| ▲ <i>Little Egret</i>                  | ● <i>Red Muntjac</i>                |
| ▲ <i>Rufous-capped Babbler</i>         | ● <i>Cryptopotamon anacoluthon</i>  |
|  | ● <i>Nanhaipotamon hongkongense</i> |

- Legend**
- PROPOSED ELEVATED / AT-GRADE ROAD
  - PROPOSED TUNNEL
  - PROPOSED HIGHWAY / TUNNEL OPERATION AND MAINTENANCE FACILITIES
  - OTHER PROJECT ELEMENTS
  - SLOPE WORKS
  - CONSTRUCTION WORKS AREA / HAUL ROAD / EXPLOSIVE MAGAZINE
  - ASSESSMENT AREA
  - ▨ TAI LAM COUNTRY PARK
  - AGRICULTURAL LAND
  - CHANNEL
  - DEVELOPED AREA
  - FUNG SHUI WOODLAND
  - MIXED WOODLAND
  - PLANTATION
  - SHRUBLAND/GRASSLAND
  - WATERCOURSE

Rev	Description	By	Date
B	SECOND ISSUE		6/23
A	FIRST ISSUE		1/23

Consultant  
**ARUP**

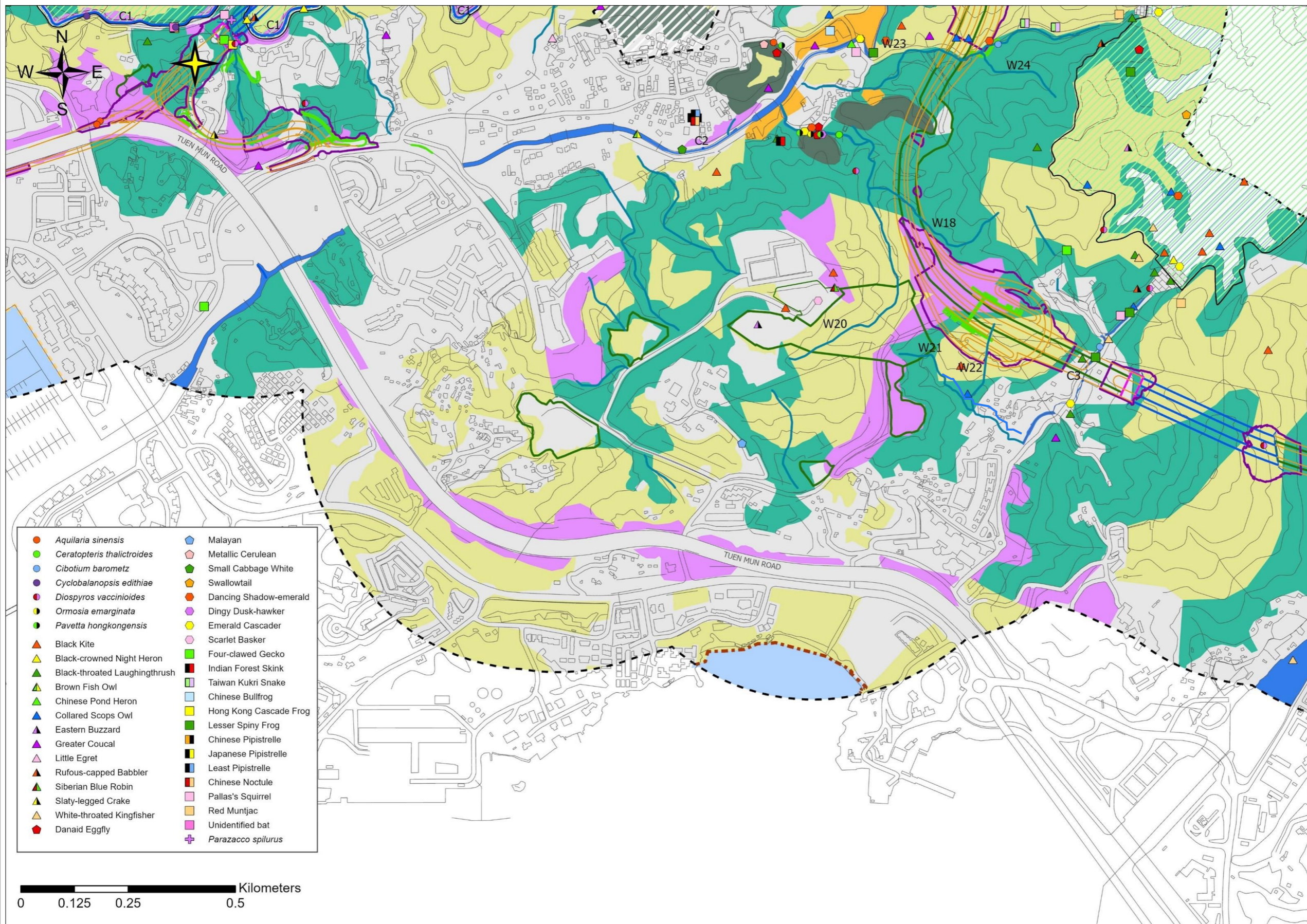
Project title  
Route 11 (Section between Yuen Long and North Lantau)

Drawing title  
HABITATS AND SPECIES OF CONSERVATION IMPORTANCE RECORDED WITHIN THE ASSESSMENT AREA DURING THE ECOLOGICAL SURVEYS – SO KWUN WAT PORTION C

Drawing no.	FIGURE 9.4D	Rev.	B
Drawn	Date	Checked	Approved
Scale	Status	PRELIMINARY	

COPYRIGHT RESERVED  
**路政署 HIGHWAYS DEPARTMENT**

- Note**
- The location of *Gnetum luofuense* is not pinpointed as it was commonly recorded within the assessment area during the ecological surveys
  - The location of the recorded *Ixonanthes reticulata* in Tin Hau Temple Fung Shui Woodland is not pinpointed, as this species was abundantly recorded there.



- Legend**
- PROPOSED ELEVATED / AT-GRADE ROAD
  - PROPOSED TUNNEL
  - PROPOSED HIGHWAY / TUNNEL OPERATION AND MAINTENANCE FACILITIES
  - OTHER PROJECT ELEMENTS
  - SLOPE WORKS
  - CONSTRUCTION WORKS AREA / HAUL ROAD / EXPLOSIVE MAGAZINE
  - ASSESSMENT AREA
  - TAI LAM COUNTRY PARK
  - AGRICULTURAL LAND
  - CHANNEL
  - DEVELOPED AREA
  - FUNG SHUI WOODLAND
  - MIXED WOODLAND
  - PLANTATION
  - RESERVOIR
  - SEA
  - SHRUBLAND/GRASSLAND
  - WATERCOURSE
  - NATURAL COASTLINE

- |  |   |
|--|---|
| <span style="color: orange;">●</span> <i>Aquilaria sinensis</i>        | <span style="color: blue;">◆</span> Malayan                     |
| <span style="color: green;">●</span> <i>Ceratopteris thalictroides</i> | <span style="color: pink;">◆</span> Metallic Cerulean           |
| <span style="color: blue;">●</span> <i>Cibotium barometz</i>           | <span style="color: green;">◆</span> Small Cabbage White        |
| <span style="color: purple;">●</span> <i>Cyclobalanopsis edithiae</i>  | <span style="color: orange;">◆</span> Swallowtail               |
| <span style="color: red;">●</span> <i>Diospyros vaccinioides</i>       | <span style="color: orange;">◆</span> Dancing Shadow-emerald    |
| <span style="color: yellow;">●</span> <i>Ormosia emarginata</i>        | <span style="color: purple;">◆</span> Dingy Dusk-hawker         |
| <span style="color: green;">●</span> <i>Pavetta hongkongensis</i>      | <span style="color: yellow;">◆</span> Emerald Cascader          |
| <span style="color: red;">▲</span> Black Kite                          | <span style="color: pink;">◆</span> Scarlet Basker              |
| <span style="color: yellow;">▲</span> Black-crowned Night Heron        | <span style="color: green;">■</span> Four-clawed Gecko          |
| <span style="color: green;">▲</span> Black-throated Laughingthrush     | <span style="color: black;">■</span> Indian Forest Skink        |
| <span style="color: green;">▲</span> Brown Fish Owl                    | <span style="color: grey;">■</span> Taiwan Kukri Snake          |
| <span style="color: green;">▲</span> Chinese Pond Heron                | <span style="color: lightblue;">■</span> Chinese Bullfrog       |
| <span style="color: blue;">▲</span> Collared Scops Owl                 | <span style="color: yellow;">■</span> Hong Kong Cascade Frog    |
| <span style="color: purple;">▲</span> Eastern Buzzard                  | <span style="color: green;">■</span> Lesser Spiny Frog          |
| <span style="color: purple;">▲</span> Greater Coucal                   | <span style="color: black;">■</span> Chinese Pipistrelle        |
| <span style="color: purple;">▲</span> Little Egret                     | <span style="color: black;">■</span> Japanese Pipistrelle       |
| <span style="color: purple;">▲</span> Rufous-capped Babbler            | <span style="color: black;">■</span> Least Pipistrelle          |
| <span style="color: green;">▲</span> Siberian Blue Robin               | <span style="color: black;">■</span> Chinese Noctule            |
| <span style="color: green;">▲</span> Slaty-legged Crane                | <span style="color: pink;">■</span> Pallas's Squirrel           |
| <span style="color: orange;">▲</span> White-throated Kingfisher        | <span style="color: orange;">■</span> Red Muntjac               |
| <span style="color: red;">▲</span> Danaid Eggfly                       | <span style="color: pink;">■</span> Unidentified bat            |
|  | <span style="color: purple;">+</span> <i>Parazacco spilurus</i> |



- Note**
- The location of *Gnetum luofuense* is not pinpointed as it was very commonly recorded within the assessment area during the ecological surveys.
  - The approximate location of the ditch within the western portal of SKWLR is pinpointed by a four-point star
  - The location of the recorded *Ixonanthes reticulata* in THTFSW and CUTFSW is not pinpointed, as this species was abundantly recorded there.

B	SECOND ISSUE	6/23
A	FIRST ISSUE	1/23
Rev	Description	By Date

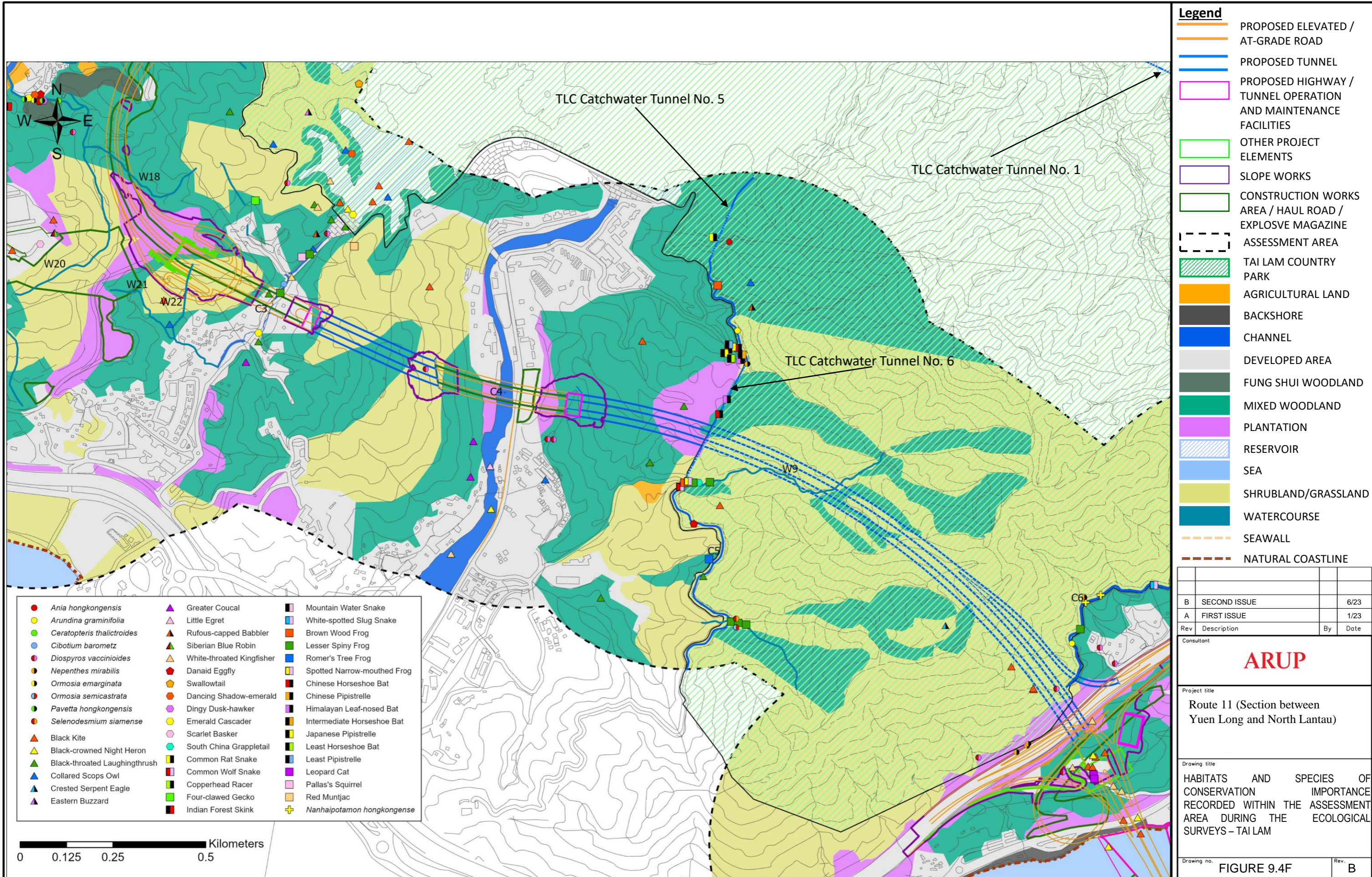
Consultant  
**ARUP**

Project title  
Route 11 (Section between Yuen Long and North Lantau)

Drawing title  
HABITATS AND SPECIES OF CONSERVATION IMPORTANCE RECORDED WITHIN THE ASSESSMENT AREA DURING THE ECOLOGICAL SURVEYS – SO KWUN WAT PORTION D

Drawing no.	FIGURE 9.4E	Rev.	B
Drawn	Date	Checked	Approved
Scale	Status	PRELIMINARY	

COPYRIGHT RESERVED  
**路政署**  
**HIGHWAYS DEPARTMENT**



- |                                     |                             |                                     |
|-------------------------------------|-----------------------------|-------------------------------------|
| ● <i>Ania hongkongensis</i>         | ▲ Greater Coucal            | ■ Mountain Water Snake              |
| ● <i>Arundina graminifolia</i>      | ▲ Little Egret              | ■ White-spotted Slug Snake          |
| ● <i>Ceratopteris thalictroides</i> | ▲ Rufous-capped Babbler     | ■ Brown Wood Frog                   |
| ● <i>Cibotium barometz</i>          | ▲ Siberian Blue Robin       | ■ Lesser Spiny Frog                 |
| ● <i>Diospyros vaccinioides</i>     | ▲ White-throated Kingfisher | ■ Romer's Tree Frog                 |
| ● <i>Nepenthes mirabilis</i>        | ▲ Danaid Eggfly             | ■ Spotted Narrow-mouthed Frog       |
| ● <i>Ormosia emarginata</i>         | ▲ Swallowtail               | ■ Chinese Horseshoe Bat             |
| ● <i>Ormosia semicastrata</i>       | ▲ Dancing Shadow-emerald    | ■ Chinese Pipistrelle               |
| ● <i>Pavetta hongkongensis</i>      | ▲ Dingy Dusk-hawker         | ■ Himalayan Leaf-nosed Bat          |
| ● <i>Selenodesmium siamense</i>     | ▲ Emerald Cascader          | ■ Intermediate Horseshoe Bat        |
| ▲ Black Kite                        | ▲ Scarlet Basker            | ■ Japanese Pipistrelle              |
| ▲ Black-crowned Night Heron         | ▲ South China Grappletail   | ■ Least Horseshoe Bat               |
| ▲ Black-throated Laughingthrush     | ▲ Common Rat Snake          | ■ Least Pipistrelle                 |
| ▲ Collared Scops Owl                | ▲ Common Wolf Snake         | ■ Leopard Cat                       |
| ▲ Crested Serpent Eagle             | ▲ Copperhead Racer          | ■ Pallas's Squirrel                 |
| ▲ Eastern Buzzard                   | ▲ Four-clawed Gecko         | ■ Red Muntjac                       |
|                                     | ▲ Indian Forest Skink       | ■ <i>Nanhaipotamon hongkongense</i> |



**Note/Abbreviation**

- TLC: Tai Lam Chung
- The location of *Gnetum luofuense* and *Ixonanthes reticulata*, which are of conservation importance, are not pinpointed, as the former was very commonly recorded within the assessment area, while the latter was abundantly recorded in Ching Uk Tsuen Fung Shui Woodland during the ecological surveys.
- TLC Catchwater Tunnel Nos. 1 and 6 are known bat roosting grounds, while TLC Catchwater Tunnel No. 5 could be a possible bat roosting ground.
- The location of the recorded *Ixonanthes reticulata* in THTFSW and CUTFSW is not pinpointed, as this species was abundantly recorded there.

- Legend**
- PROPOSED ELEVATED / AT-GRADE ROAD
  - PROPOSED TUNNEL
  - PROPOSED HIGHWAY / TUNNEL OPERATION AND MAINTENANCE FACILITIES
  - OTHER PROJECT ELEMENTS
  - SLOPE WORKS
  - CONSTRUCTION WORKS AREA / HAUL ROAD / EXPLOSIVE MAGAZINE
  - ASSESSMENT AREA
  - TAI LAM COUNTRY PARK
  - AGRICULTURAL LAND
  - BACKSHORE
  - CHANNEL
  - DEVELOPED AREA
  - FUNG SHUI WOODLAND
  - MIXED WOODLAND
  - PLANTATION
  - RESERVOIR
  - SEA
  - SHRUBLAND/GRASSLAND
  - WATERCOURSE
  - SEAWALL
  - NATURAL COASTLINE

B	SECOND ISSUE	6/23
A	FIRST ISSUE	1/23
Rev	Description	By Date

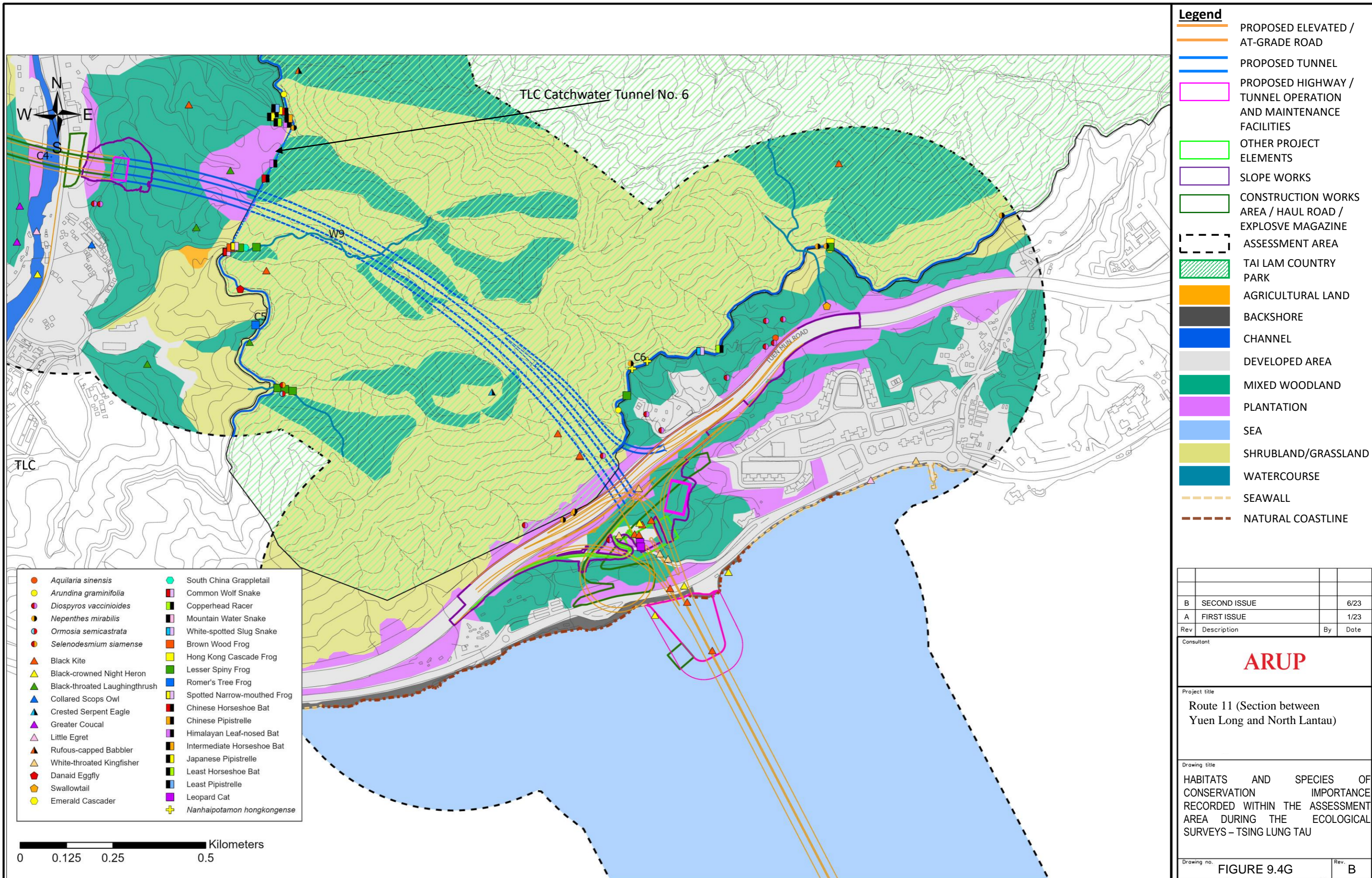
Consultant  
**ARUP**

Project title  
Route 11 (Section between Yuen Long and North Lantau)

Drawing title  
HABITATS AND SPECIES OF CONSERVATION IMPORTANCE RECORDED WITHIN THE ASSESSMENT AREA DURING THE ECOLOGICAL SURVEYS – TAI LAM

Drawing no.	FIGURE 9.4F	Rev.	B
Drawn	Date	Checked	Approved
Scale	Status	PRELIMINARY	

COPYRIGHT RESERVED  
**路政署 HIGHWAYS DEPARTMENT**



- Legend**
- PROPOSED ELEVATED / AT-GRADE ROAD
  - PROPOSED TUNNEL
  - PROPOSED HIGHWAY / TUNNEL OPERATION AND MAINTENANCE FACILITIES
  - OTHER PROJECT ELEMENTS
  - SLOPE WORKS
  - CONSTRUCTION WORKS AREA / HAUL ROAD / EXPLOSIVE MAGAZINE
  - ASSESSMENT AREA
  - TAI LAM COUNTRY PARK
  - AGRICULTURAL LAND
  - BACKSHORE
  - CHANNEL
  - DEVELOPED AREA
  - MIXED WOODLAND
  - PLANTATION
  - SEA
  - SHRUBLAND/GRASSLAND
  - WATERCOURSE
  - SEAWALL
  - NATURAL COASTLINE

- |   |  |
|---|--|
| <span style="color: red;">●</span> <i>Aquilaria sinensis</i>        | <span style="color: cyan;">●</span> South China Grappletail            |
| <span style="color: yellow;">●</span> <i>Arundina graminifolia</i>  | <span style="color: red;">■</span> Common Wolf Snake                   |
| <span style="color: purple;">●</span> <i>Diospyros vaccinioides</i> | <span style="color: green;">■</span> Copperhead Racer                  |
| <span style="color: orange;">●</span> <i>Nepenthes mirabilis</i>    | <span style="color: black;">■</span> Mountain Water Snake              |
| <span style="color: blue;">●</span> <i>Ormosia semicastrata</i>     | <span style="color: blue;">■</span> White-spotted Slug Snake           |
| <span style="color: brown;">●</span> <i>Selenodesmium siamense</i>  | <span style="color: orange;">■</span> Brown Wood Frog                  |
| <span style="color: red;">▲</span> Black Kite                       | <span style="color: yellow;">■</span> Hong Kong Cascade Frog           |
| <span style="color: yellow;">▲</span> Black-crowned Night Heron     | <span style="color: green;">■</span> Lesser Spiny Frog                 |
| <span style="color: green;">▲</span> Black-throated Laughingthrush  | <span style="color: blue;">■</span> Romer's Tree Frog                  |
| <span style="color: blue;">▲</span> Collared Scops Owl              | <span style="color: yellow;">■</span> Spotted Narrow-mouthed Frog      |
| <span style="color: black;">▲</span> Crested Serpent Eagle          | <span style="color: red;">■</span> Chinese Horseshoe Bat               |
| <span style="color: purple;">▲</span> Greater Coucal                | <span style="color: orange;">■</span> Chinese Pipistrelle              |
| <span style="color: blue;">▲</span> Little Egret                    | <span style="color: purple;">■</span> Himalayan Leaf-nosed Bat         |
| <span style="color: orange;">▲</span> Rufous-capped Babbler         | <span style="color: black;">■</span> Intermediate Horseshoe Bat        |
| <span style="color: yellow;">▲</span> White-throated Kingfisher     | <span style="color: green;">■</span> Japanese Pipistrelle              |
| <span style="color: red;">●</span> Danaid Eggfly                    | <span style="color: black;">■</span> Least Horseshoe Bat               |
| <span style="color: orange;">●</span> Swallowtail                   | <span style="color: blue;">■</span> Least Pipistrelle                  |
| <span style="color: yellow;">●</span> Emerald Cascader              | <span style="color: purple;">■</span> Leopard Cat                      |
|   | <span style="color: green;">+</span> <i>Nanhaipotamon hongkongense</i> |



**Note/Abbreviation**

- TLC: Tai Lam Chung
- The location of *Gnetum luofuense* is not pinpointed as it was commonly recorded within the assessment area during the ecological surveys.
- TLC Catchwater Tunnel Nos. 1 and 6 are known bat roosting grounds.

Rev	Description	By	Date
B	SECOND ISSUE		6/23
A	FIRST ISSUE		1/23



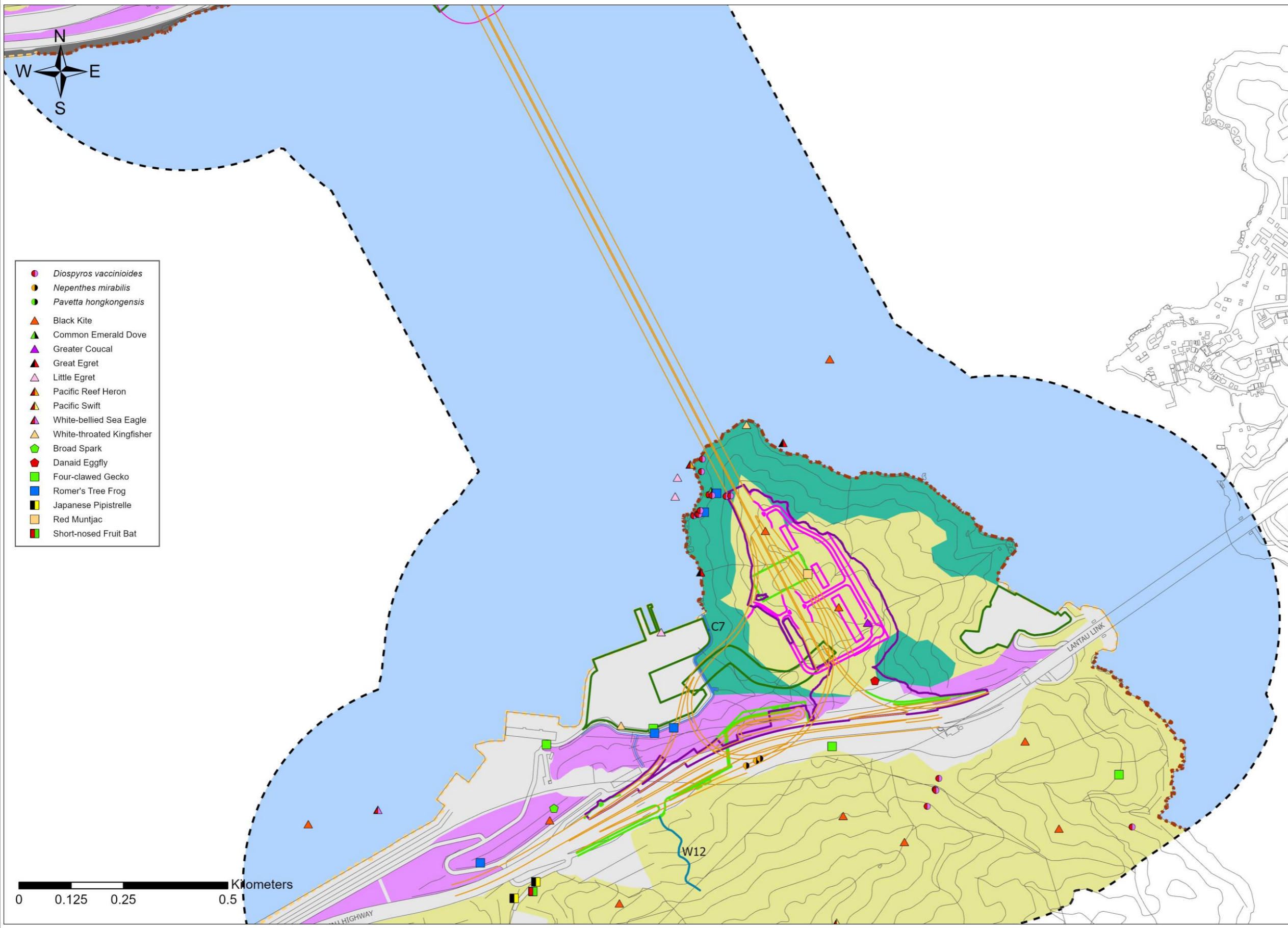
Project title  
Route 11 (Section between Yuen Long and North Lantau)

Drawing title  
HABITATS AND SPECIES OF CONSERVATION IMPORTANCE RECORDED WITHIN THE ASSESSMENT AREA DURING THE ECOLOGICAL SURVEYS – TSING LUNG TAU

Drawing no.	FIGURE 9.4G	Rev.	B
Drawn	Date	Checked	Approved
Scale	Status	PRELIMINARY	







- *Diospyros vaccinioides*
- *Nepenthes mirabilis*
- *Pavetta hongkongensis*
- ▲ Black Kite
- ▲ Common Emerald Dove
- ▲ Greater Coucal
- ▲ Great Egret
- ▲ Little Egret
- ▲ Pacific Reef Heron
- ▲ Pacific Swift
- ▲ White-bellied Sea Eagle
- ▲ White-throated Kingfisher
- Broad Spark
- Danaid Eggfly
- Four-clawed Gecko
- Romer's Tree Frog
- Japanese Pipistrelle
- Red Muntjac
- Short-nosed Fruit Bat

- Legend**
- PROPOSED ELEVATED / AT-GRADE ROAD
  - PROPOSED HIGHWAY / TUNNEL OPERATION AND MAINTENANCE FACILITIES
  - OTHER PROJECT ELEMENTS
  - SLOPE WORKS
  - CONSTRUCTION WORKS AREA / HAUL ROAD / EXPLOSIVE MAGAZINE
  - ASSESSMENT AREA
  - BACKSHORE
  - CHANNEL
  - DEVELOPED AREA
  - MIXED WOODLAND
  - PLANTATION
  - SEA
  - SHRUBLAND/GRASSLAND
  - SEAWALL
  - NATURAL COASTLINE

B	SECOND ISSUE		6/23
A	FIRST ISSUE		1/23
Rev	Description	By	Date

Consultant

ARUP

Project title

Route 11 (Section between Yuen Long and North Lantau)

Drawing title

HABITATS AND SPECIES OF CONSERVATION IMPORTANCE RECORDED WITHIN THE ASSESSMENT AREA DURING THE ECOLOGICAL SURVEYS – NORTH LANTAU

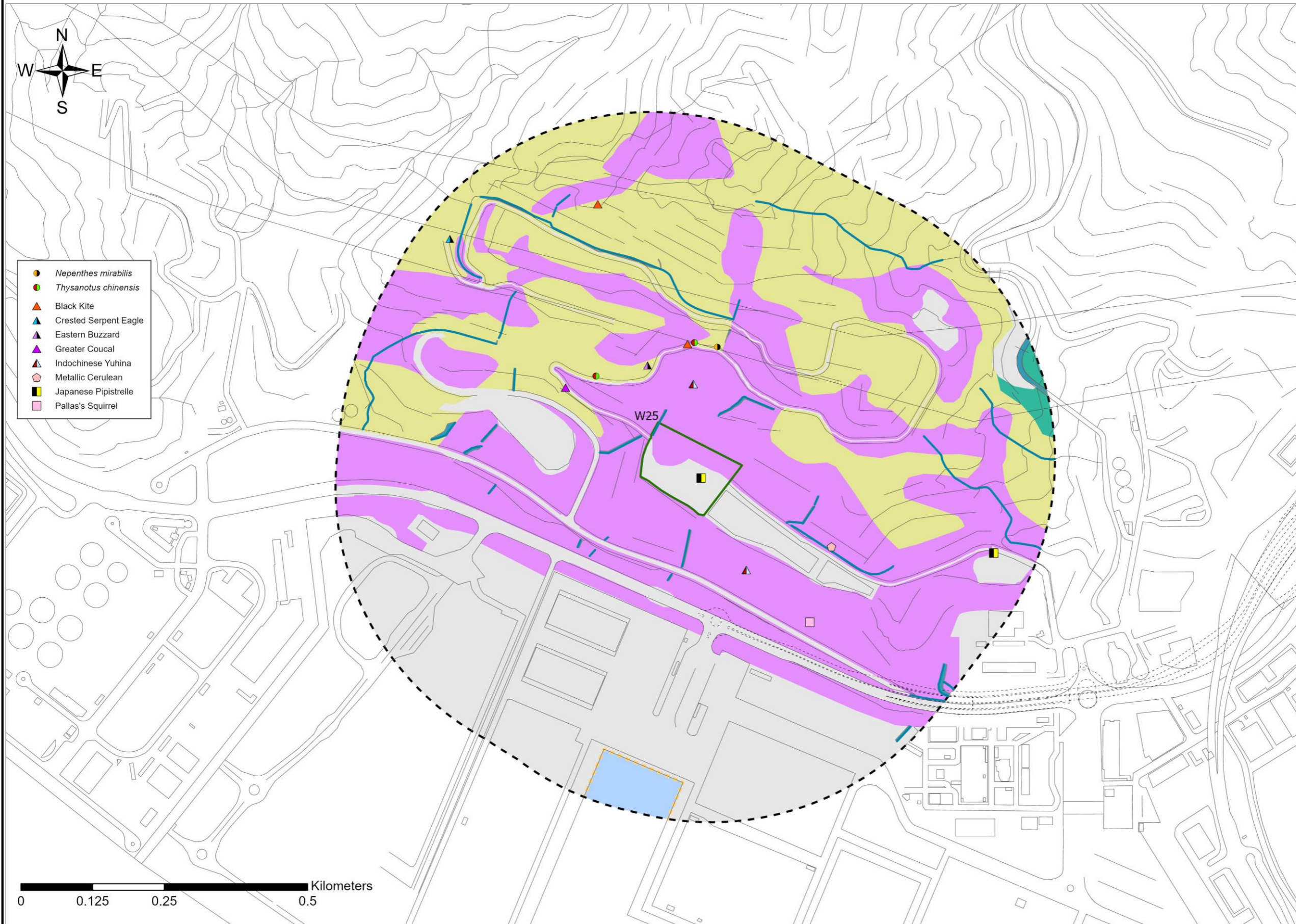
Drawing no. <b>FIGURE 9.4H</b>		Rev. <b>B</b>	
Drawn	Date	Checked	Approved
Scale	Status		PRELIMINARY

COPYRIGHT RESERVED

路政署  
HIGHWAYS DEPARTMENT

**Note/Abbreviation**

- The location of *Gnetum luofuense* is not pinpointed as it was very commonly recorded within the assessment area during the ecological surveys.



- *Nepenthes mirabilis*
- *Thysanotus chinensis*
- ▲ Black Kite
- ▲ Crested Serpent Eagle
- ▲ Eastern Buzzard
- ▲ Greater Coucal
- ▲ Indochinese Yuhina
- Metallic Cerulean
- Japanese Pipistrelle
- Pallas's Squirrel

- Legend**
- ▭ CONSTRUCTION WORKS AREA / HAUL ROAD / EXPLOSIVE MAGAZINE
  - ▭ ASSESSMENT AREA
  - ▭ DEVELOPED AREA
  - ▭ MIXED WOODLAND
  - ▭ PLANTATION
  - ▭ SHRUBLAND/GRASSLAND
  - ▭ WATERCOURSE
  - ▭ SEA

Rev	Description	By	Date
B	SECOND ISSUE		6/23
A	FIRST ISSUE		1/23

Consultant  
**ARUP**

Project title  
Route 11 (Section between Yuen Long and North Lantau)

Drawing title  
HABITATS AND SPECIES OF CONSERVATION IMPORTANCE RECORDED WITHIN THE ASSESSMENT AREA DURING THE ECOLOGICAL SURVEYS - SIU LANG SHUI

Drawing no.	FIGURE 9.4I	Rev.	B
Drawn	Date	Checked	Approved
Scale	Status	PRELIMINARY	

COPYRIGHT RESERVED

**路政署**  
**HIGHWAYS DEPARTMENT**

**Note**

- The location of *Gnetum luofuense* is not pinpointed as it was very commonly recorded within the assessment area during the ecological surveys.