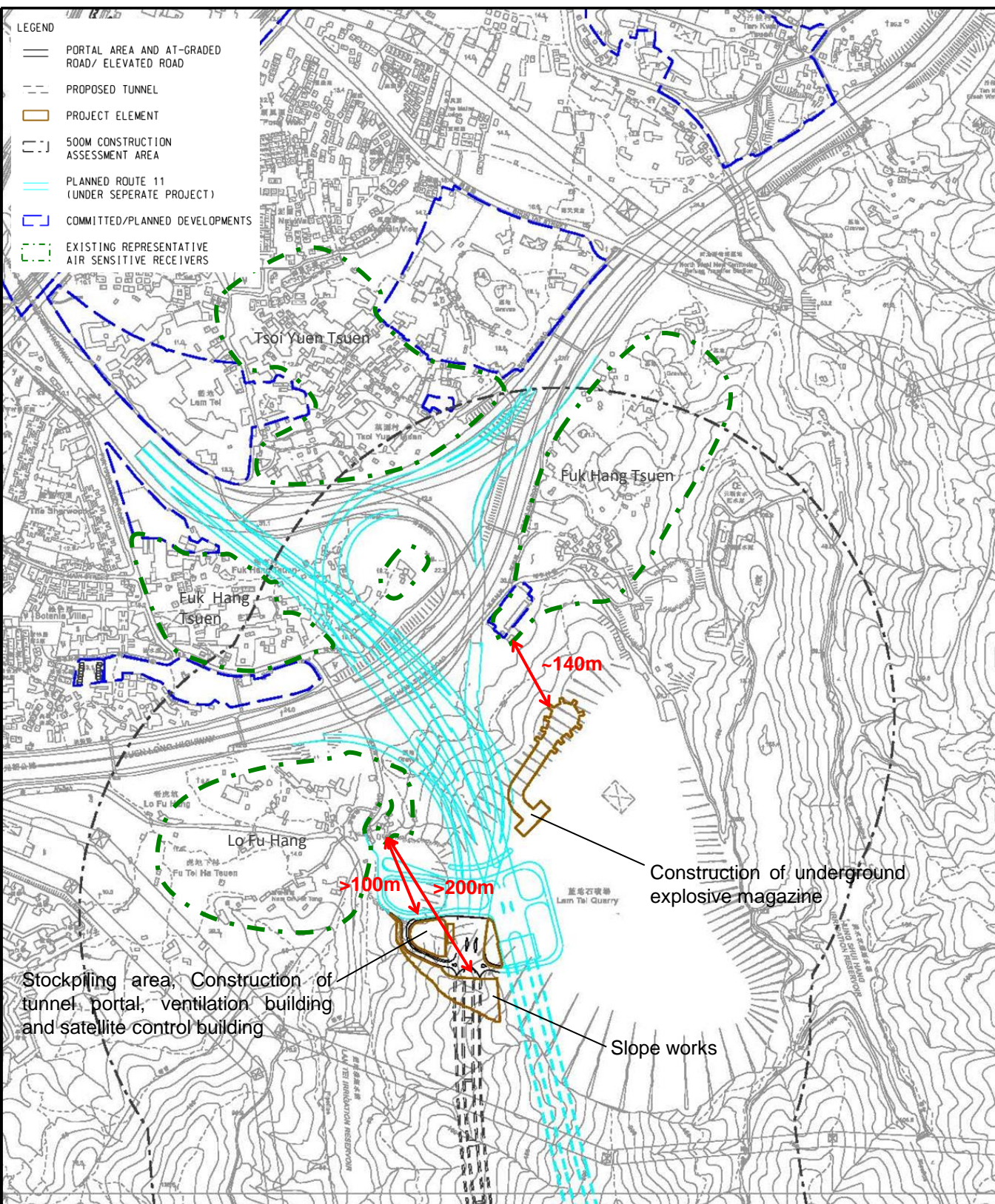
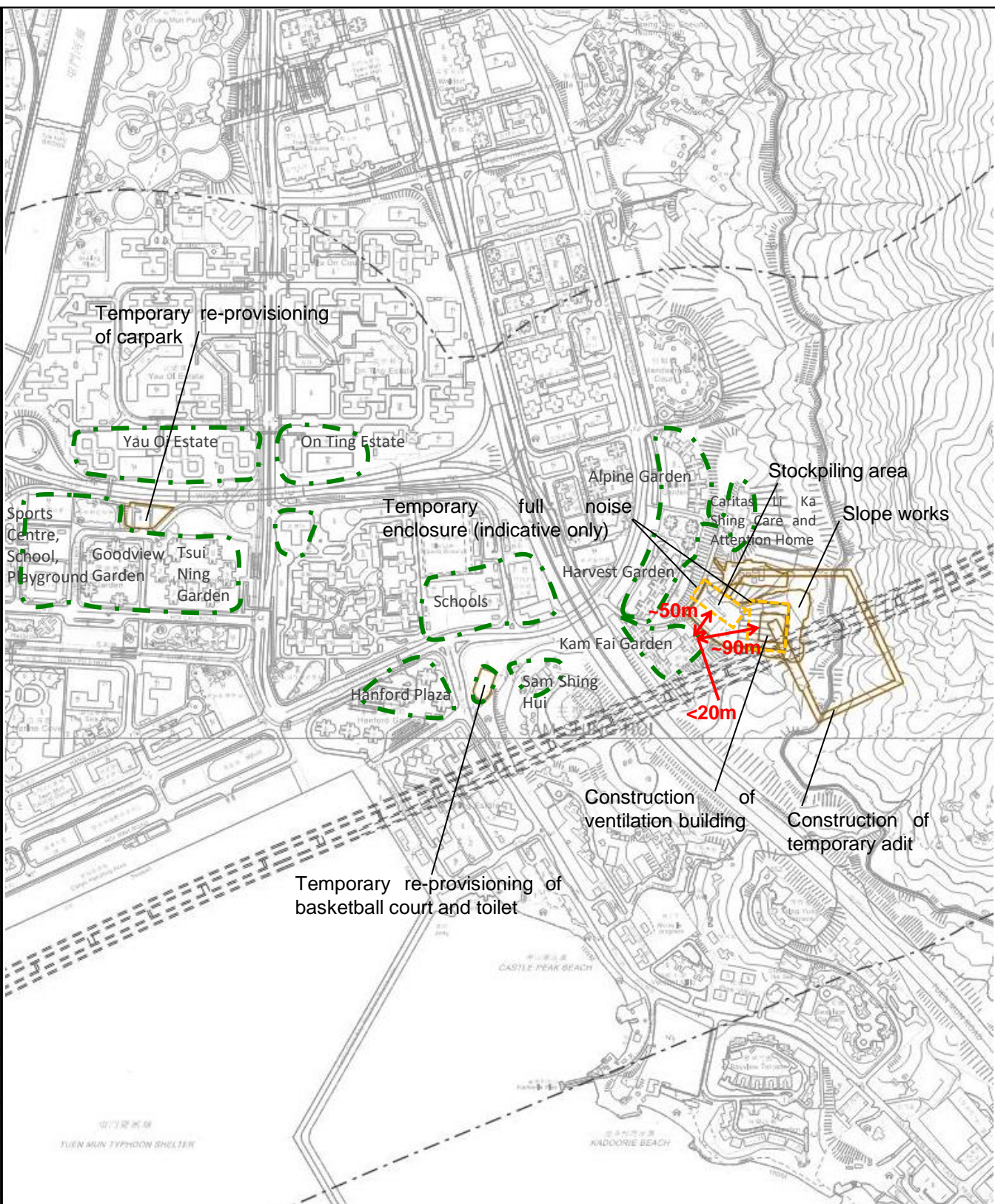


Tentative Location of Key Construction Activities and Air Sensitive Uses

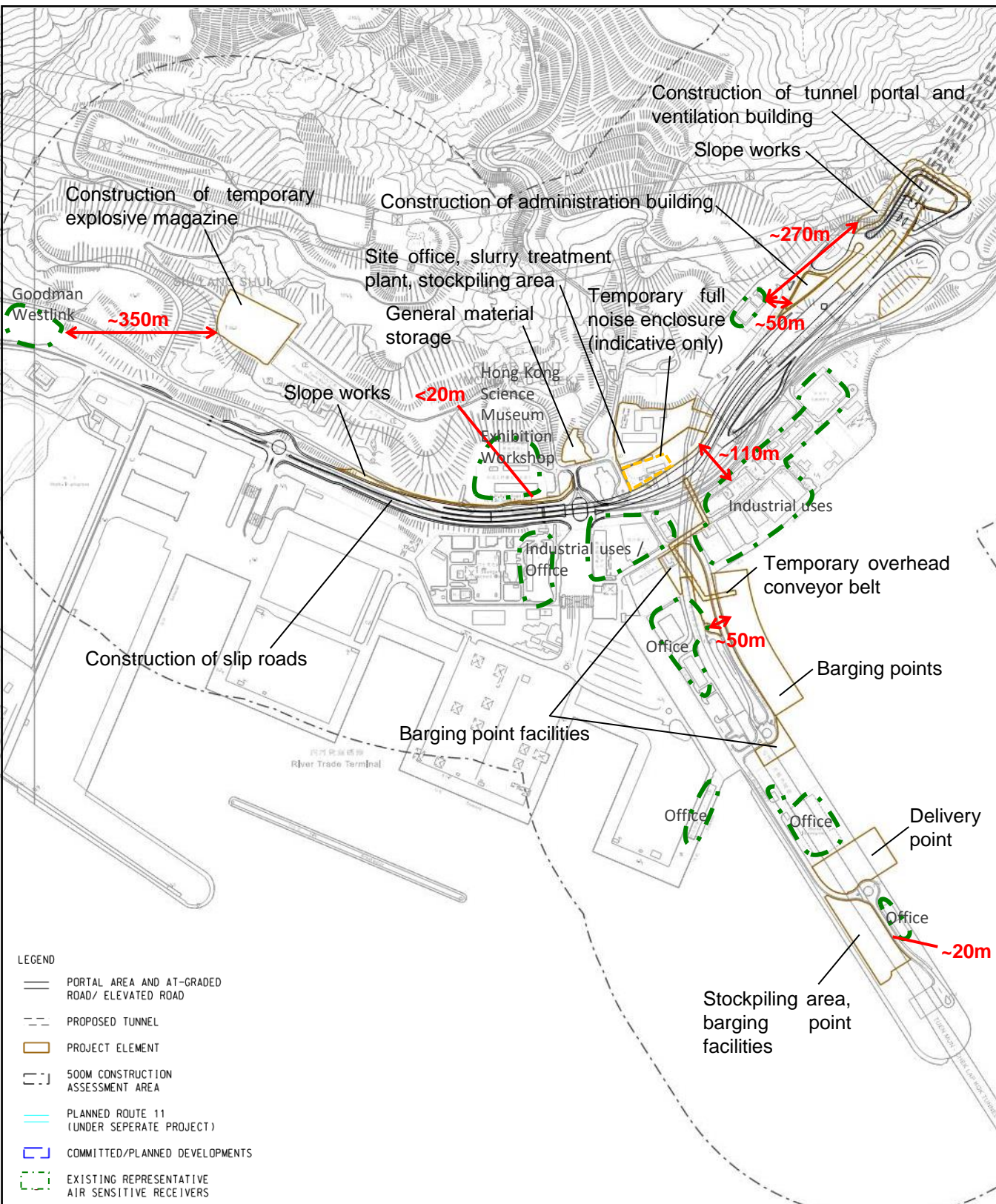


Lam Tei

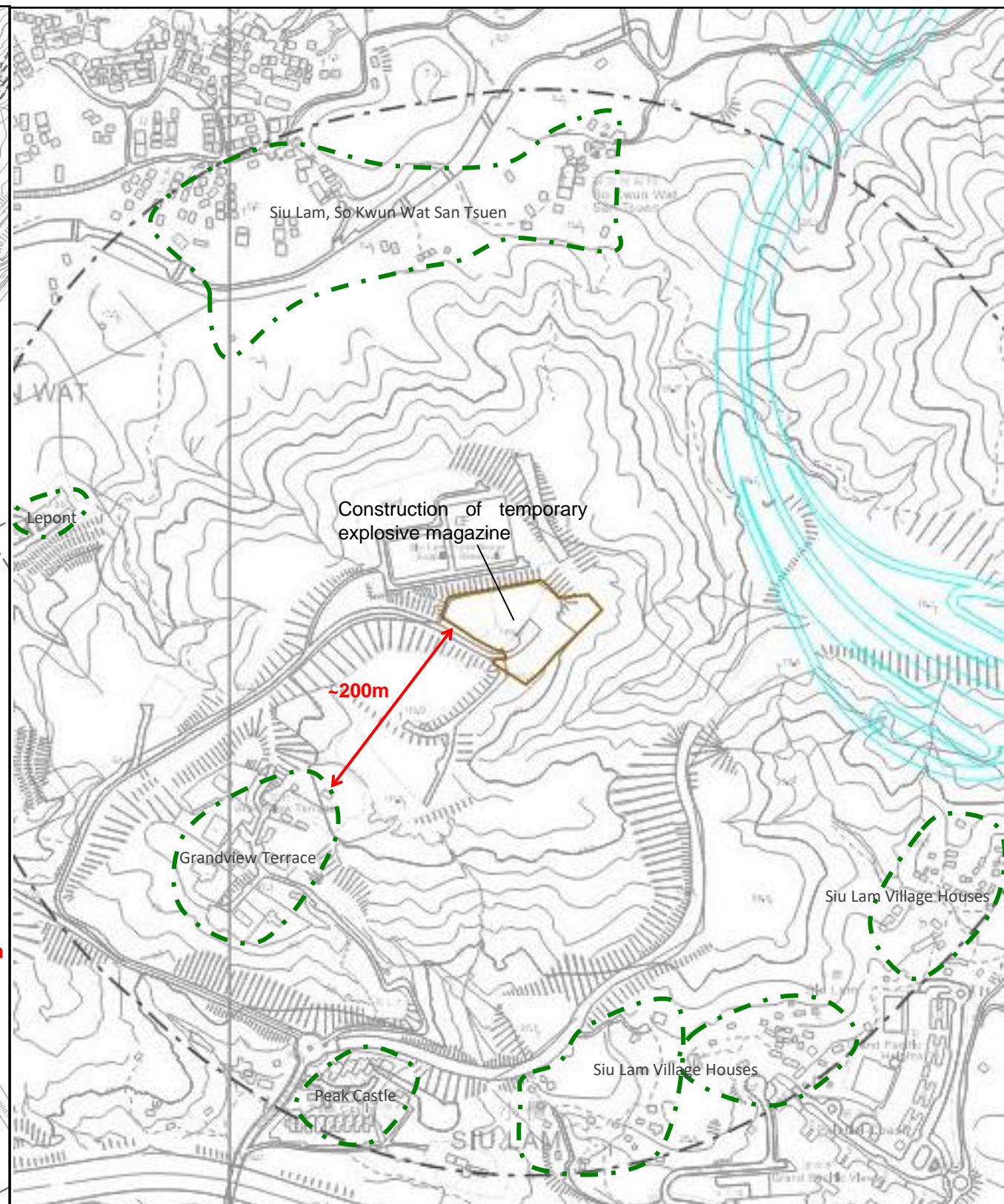


Sam Shing

Tentative Location of Key Construction Activities and Air Sensitive Uses

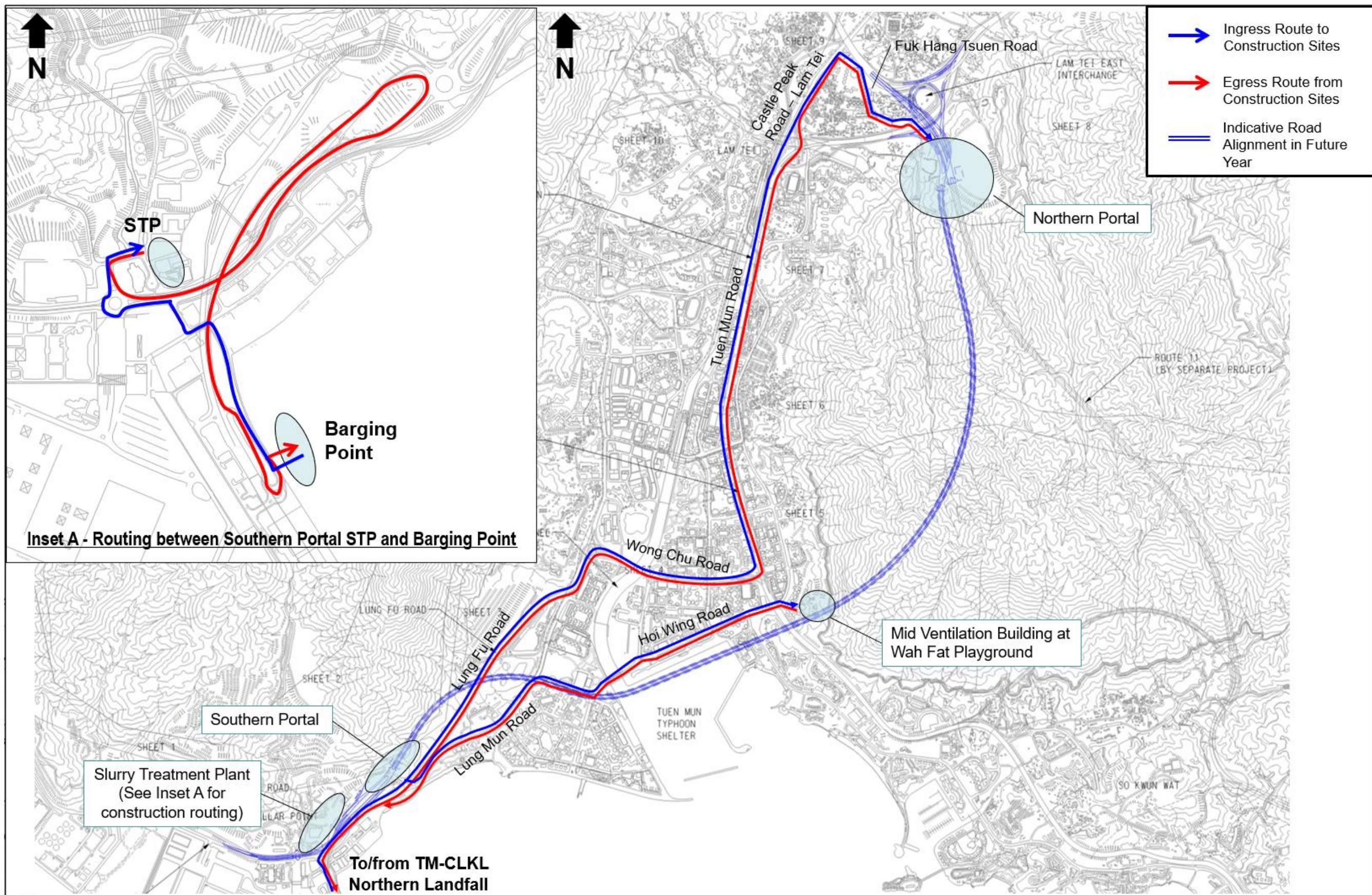


Pillar Point



Siu Lam

Transportation Route (Tentative)



Inset A - Routing between Southern Portal STP and Barging Point

Job Title **Agreement No. CE 65/2021 (HY) Tuen Mun Bypass – Investigation**

Date	Scale	Drawing Title
Drawn	Job No.	
	NTS	
	287168	

