

- LEGEND**
- PROPOSED ELEVATED / AT-GRADE ROAD
 - - - PROPOSED TUNNEL
 - - - 100m LANDSCAPE ASSESSMENT AREA
 - - - COUNTRY PARK BOUNDARY
 - 100 HEIGHT IN +MPD

C	THIRD ISSUE	LFM	08/23
B	SECOND ISSUE	LFM	04/23
A	FIRST ISSUE	LFM	06/22
Rev	Description	By	Date

Consultant
ARUP

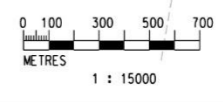
Project title
 Agreement No. CE 65/2021(HY)
 Tuen Mun Bypass - Investigation

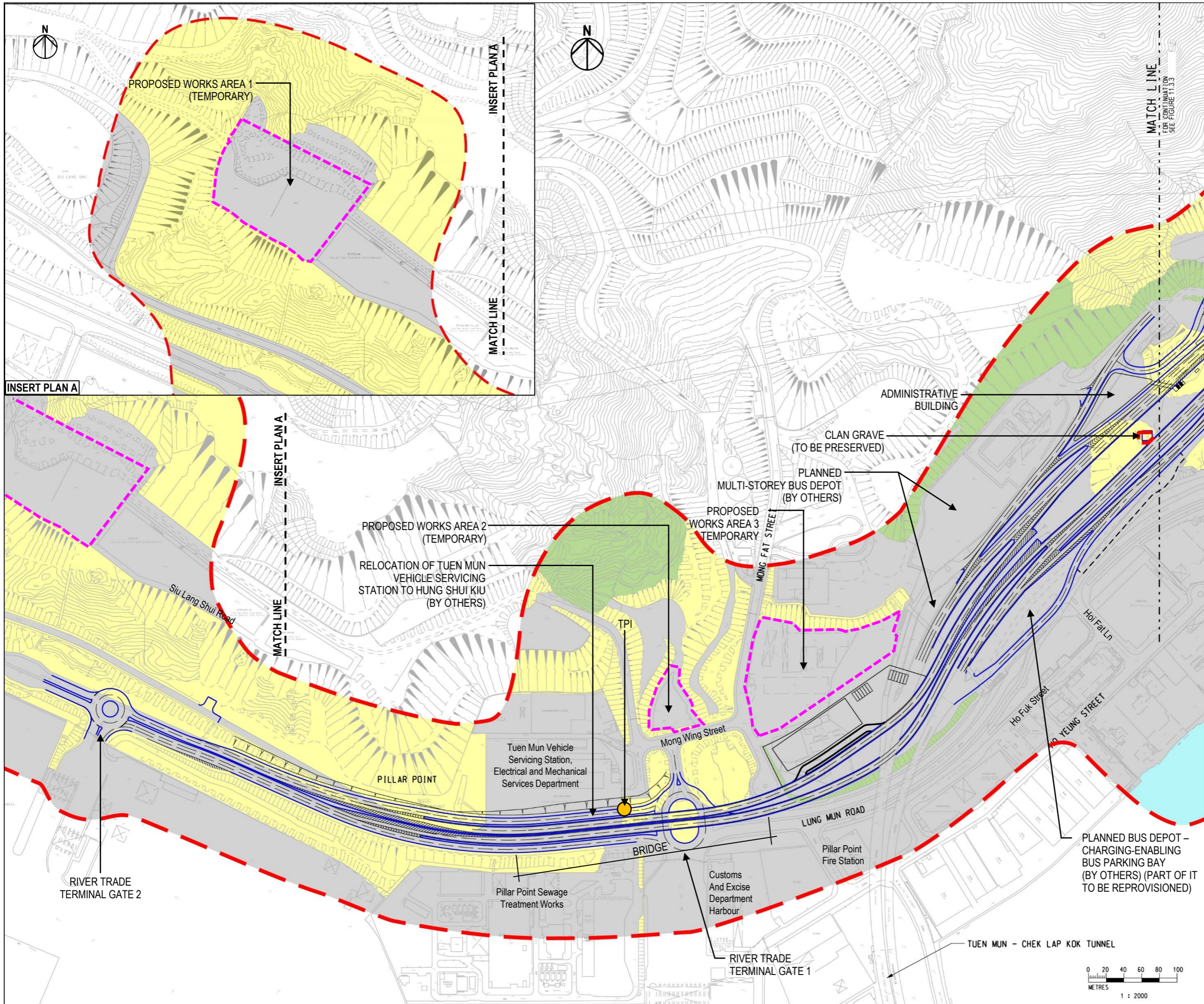
Drawing title
LANDSCAPE RESOURCES (LR) – KEY PLAN

Drawing no.		FIGURE 11.13.1		Rev.	C
Drawn	RY	Date	06/22	Checked	AW
			Approved	SK	
Scale		1 : 15000 @ A1		Status	
				PRELIMINARY	

COPYRIGHT RESERVED

路政署
HIGHWAYS DEPARTMENT





- LEGEND**
- PROPOSED ELEVATED / AT-GRADE ROAD
 - - - PROPOSED TUNNEL
 - - - 100m LANDSCAPE ASSESSMENT AREA
 - LR-PP2 PLANTATIONS IN PILLAR POINT
 - LR-PP4 SHRUBLANDS IN PILLAR POINT
 - LR-PP10 SEAWATER BODY AT PILLAR POINT
 - LR-PP11 DEVELOPED AREA IN PILLAR POINT
 - TPI
 - PROPOSED WORKS AREAS (TEMPORARY)

D	FOURTH ISSUE	LFM	09/23
C	THIRD ISSUE	LFM	08/23
B	SECOND ISSUE	LFM	04/23
A	FIRST ISSUE	LFM	06/22
Rev	Description	By	Date

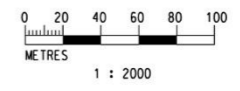
Consultant
ARUP

Project title
 Agreement No. CE 65/2021(HY)
 Tuen Mun Bypass - Investigation

Drawing title
LANDSCAPE RESOURCES (LR) – SOUTHERN INTERCHANGE IN PILLAR POINT

Drawing no. FIGURE 11.3.2		Rev. D
Drawn RY	Date 06/22	Checked AW
Approved SK	Status PRELIMINARY	
Scale 1 : 2000 @ A1	Copyright Reserved	

路政署
HIGHWAYS DEPARTMENT





- LEGEND**
- PROPOSED ELEVATED / AT-GRADE ROAD
 - PROPOSED TUNNEL
 - 100m LANDSCAPE ASSESSMENT AREA
 - LR-PP2 PLANTATIONS IN PILLAR POINT
 - LR-PP4 SHRUBLANDS IN PILLAR POINT
 - LR-PP10 SEAWATER BODY AT PILLAR POINT
 - LR-PP11 DEVELOPED AREA IN PILLAR POINT

FOR CONTINUATION SEE FIGURE 11.3.2

MATCH LINE

RECOVERY AREA

SOUTHERN VENTILATION BUILDING

Butterfly Beach Park Camping Site

CLAN GRAVE (TO BE PRESERVED)

SOUTHERN INTERCHANGE (TMB MAINLINE)

C	THIRD ISSUE	LFM	08/23
B	SECOND ISSUE	LFM	04/23
A	FIRST ISSUE	LFM	06/22
Rev	Description	By	Date

Consultant
ARUP

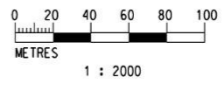
Project title
Agreement No. CE 65/2021(HY)
Tuen Mun Bypass - Investigation

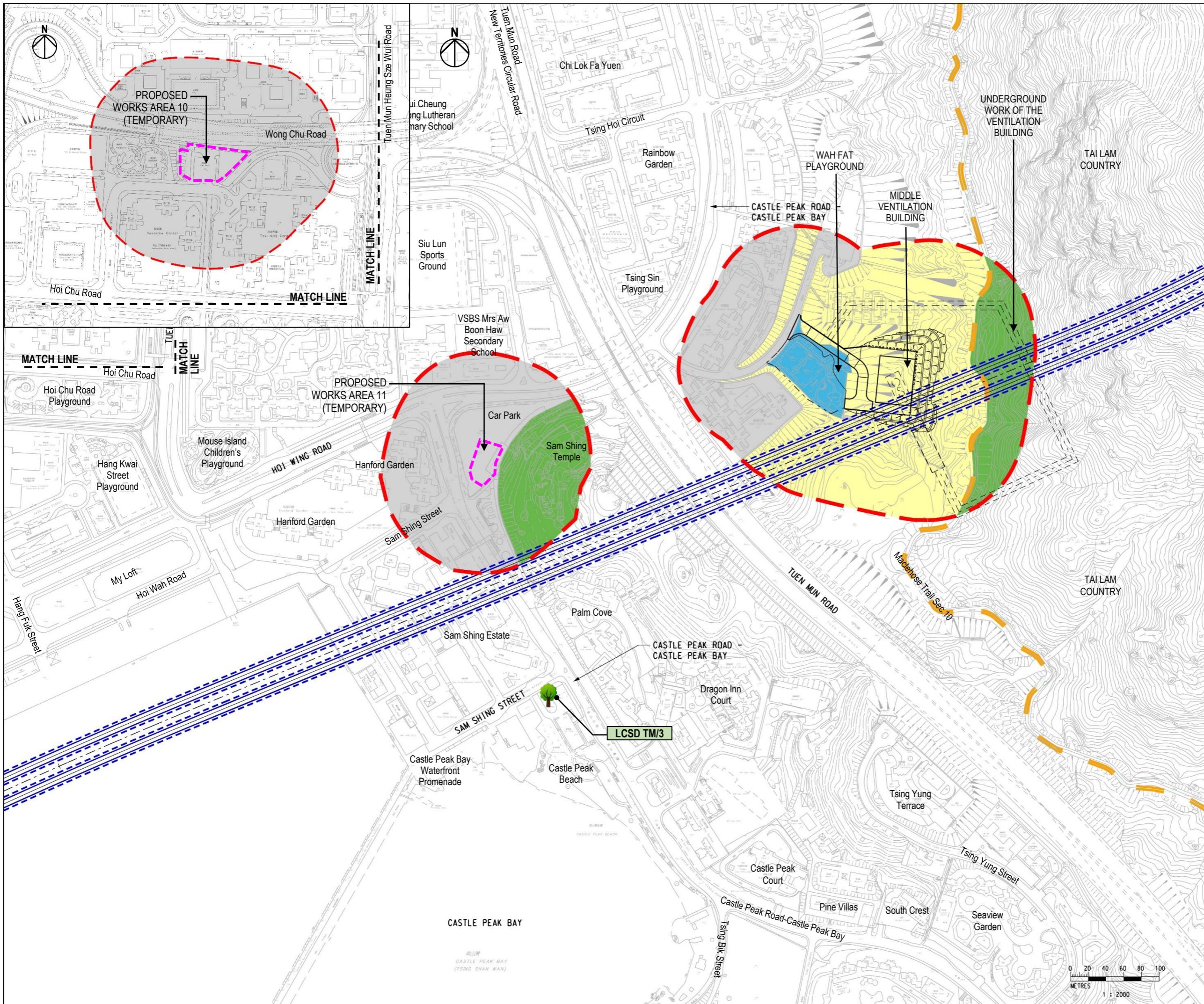
Drawing title
LANDSCAPE RESOURCES (LR) – SOUTHERN INTERCHANGE IN PILLAR POINT

Drawing no. FIGURE 11.3.3		Rev. C	
Drawn RY	Date 06/22	Checked AW	Approved SK
Scale 1 : 2000 @ A1		Status PRELIMINARY	

COPYRIGHT RESERVED

路政署
HIGHWAYS DEPARTMENT





- LEGEND**
- PROPOSED ELEVATED / AT-GRADE ROAD
 - PROPOSED TUNNEL
 - 100m LANDSCAPE ASSESSMENT AREA
 - COUNTRY PARK BOUNDARY
 - LR-TM1 SECONDARY WOODLAND IN TUEN MUN
 - LR-TM2 PLANTATIONS IN TUEN MUN
 - LR-TM11 DEVELOPED AREA IN TUEN MUN
 - LR-TM13 PLAYGROUND IN WAH FAT STREET
 - REGISTERED OLD AND VALUABLE TREE (OVT)
 - PROPOSED WORKS AREAS (TEMPORARY)

D	FOURTH ISSUE	LFM	08/23
C	THIRD ISSUE	LFM	07/23
B	SECOND ISSUE	LFM	04/23
A	FIRST ISSUE	LFM	01/23
Rev	Description	By	Date

Consultant
ARUP

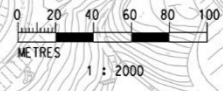
Project title
 Agreement No. CE 65/2021(HY)
 Tuén Mun Bypass - Investigation

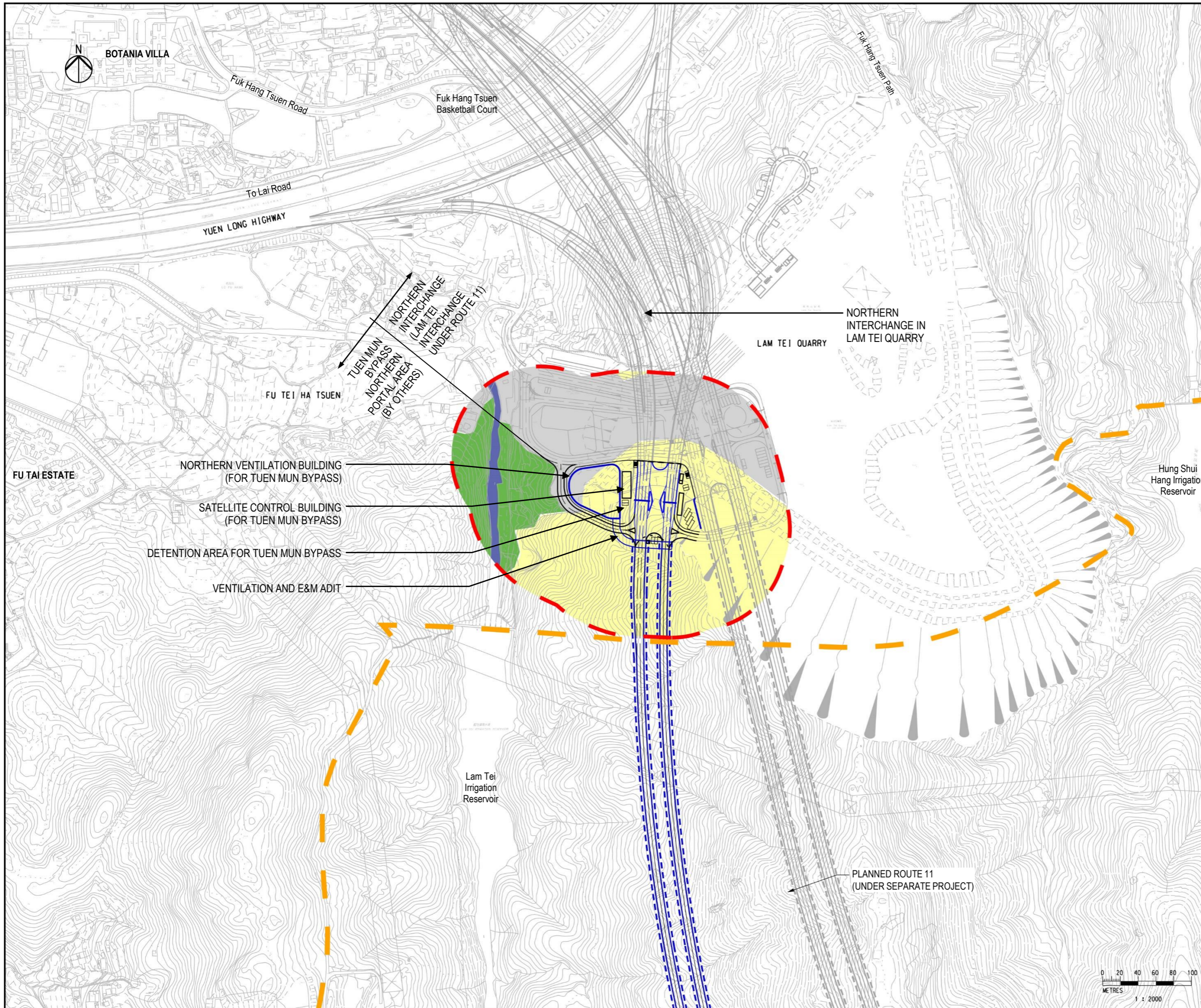
Drawing title
LANDSCAPE RESOURCES (LR) – MIDDLE VENTILATION BUILDING

Drawing no. FIGURE 11.3.4		Rev. D	
Drawn RY	Date 06/22	Checked AW	Approved SK
Scale 1 : 2000 @ A1		Status PRELIMINARY	

COPYRIGHT RESERVED

路政署
HIGHWAYS DEPARTMENT





- LEGEND**
- PROPOSED ELEVATED / AT-GRADE ROAD
 - - - - PROPOSED TUNNEL
 - - - - 100m LANDSCAPE ASSESSMENT AREA
 - - - - COUNTRY PARK BOUNDARY
 - LR-LT1 SECONDARY WOODLANDS IN LAM TEI
 - LR-LT2 PLANTATIONS IN LAM TEI
 - LR-LT7 WATERCOURSES IN LAM TEI
 - LR-LT11 DEVELOPED AREA IN LAM TEI

C	THIRD ISSUE	LFM	08/23
B	SECOND ISSUE	LFM	04/23
A	FIRST ISSUE	LFM	06/22
Rev	Description	By	Date

Consultant

ARUP

Project title

Agreement No. CE 65/2021(HY)

Tuen Mun Bypass - Investigation

Drawing title

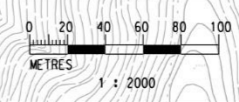
LANDSCAPE RESOURCES (LR) –
NORTHERN INTERCHANGE IN
LAM TEI QUARRY

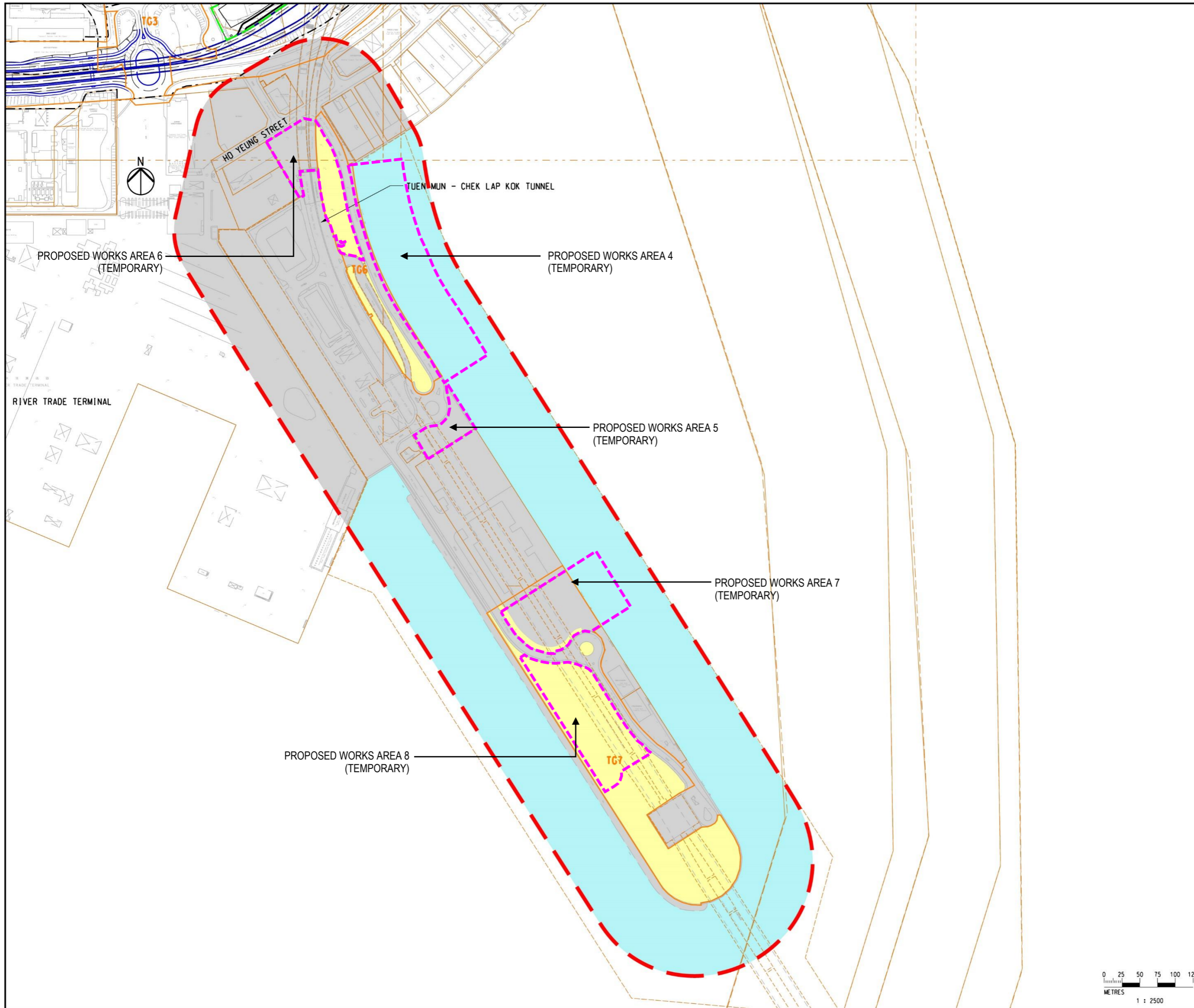
Drawing no.		Rev.	
FIGURE 11.3.5		C	
Drawn	Date	Checked	Approved
RY	06/22	AW	SK
Scale		Status	
1 : 2000 @ A1		PRELIMINARY	

COPYRIGHT RESERVED

路政署

HIGHWAYS DEPARTMENT





LEGEND

- — — PROPOSED ELEVATED / AT-GRADE ROAD
- - - PROPOSED TUNNEL
- - - 100m LANDSCAPE ASSESSMENT AREA
- LR-NL2 PLANTATIONS IN NORTHERN LANDFALL
- LR-NL10 SEAWATER BODY AT NORTHERN LANDFALL
- LR-NL11 DEVELOPED AREA IN NORTHERN LANDFALL
- PROPOSED WORKS AREAS (TEMPORARY)

C	REVISION	LFM	08/23
B	REVISION	LFM	07/23
A	FIRST ISSUE	LFM	04/23
Rev	Description	By	Date

Consultant

ARUP

Project title

Agreement No. CE 65/2021(HY)
Tuen Mun Bypass - Investigation

Drawing title

LANDSCAPE RESOURCES (LR) –
NORTHERN LANDFALL

Drawing no. FIGURE 11.3.6		Rev. C
Drawn RY	Date 06/22	Checked AW Approved SK
Scale 1 : 2500@ A1	Status PRELIMINARY	

COPYRIGHT RESERVED

路政署
HIGHWAYS DEPARTMENT

