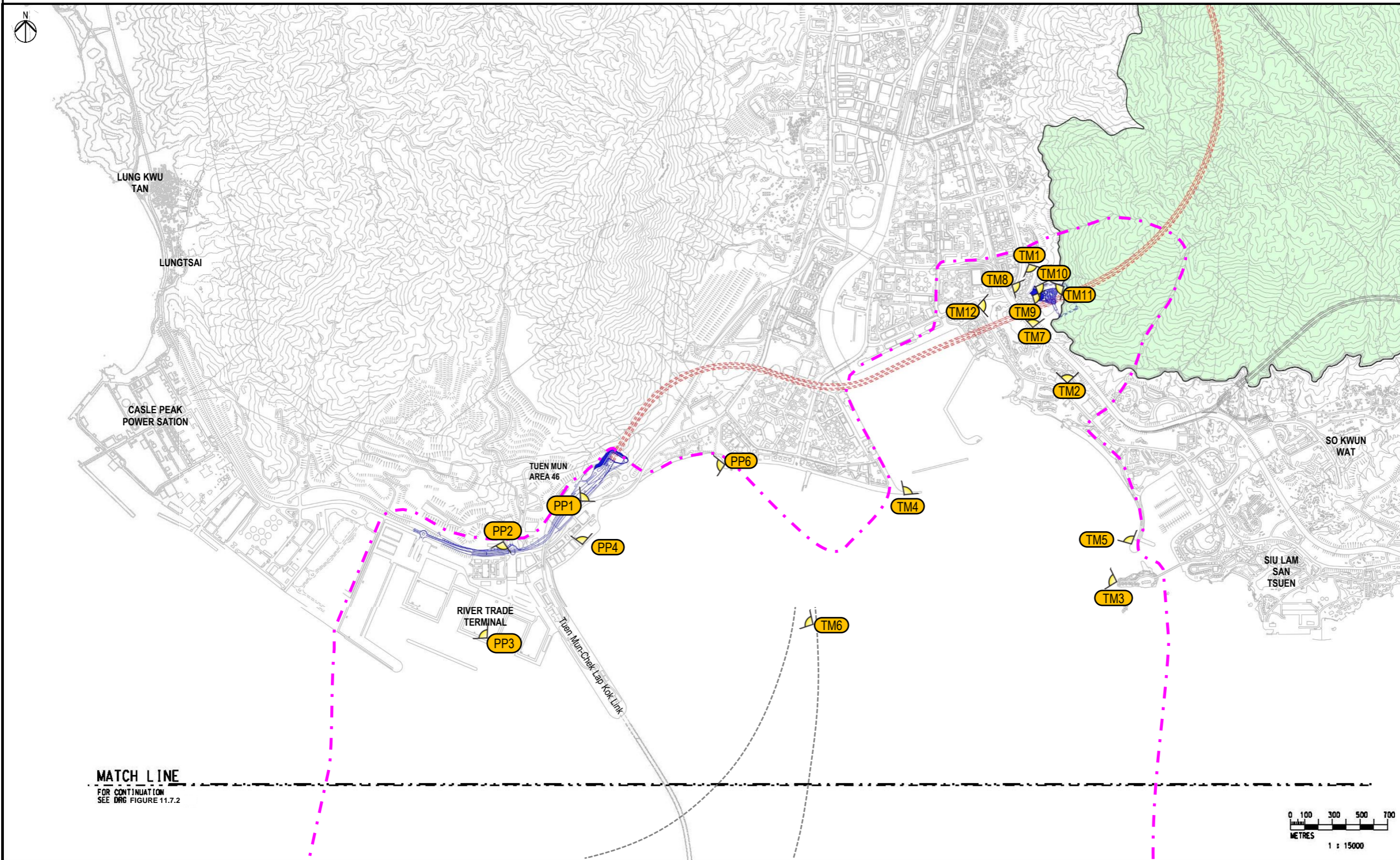
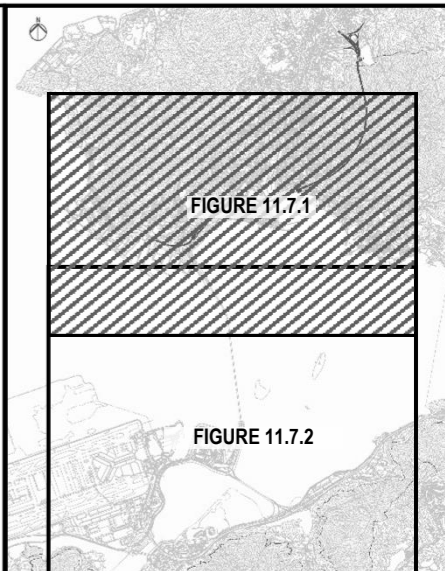


VSRs at Tuen Mun (TM)	
VSR-TM1	Residents of Alpine Garden, Rainbow Garden, Kam Fai Garden, Harvest Garden and Hoi Tak Garden
VSR-TM2	Residents of Seaview Garden
VSR-TM3	Residents of Pearl Island Garden
VSR-TM4	Visitors at Tuen Mun Promenade
VSR-TM5	Visitors at Hong Kong Gold Coast Dolphin Square
VSR-TM6	Maritime Travelers to / from Tuen Mun Ferry Terminal
VSR-TM7	Vehicle Travelers at Tuen Mun Road
VSR-TM8	Recreational Users of Tsing Sin Playground
VSR-TM9	Recreational Users of Wah Fat Garden
VSR-TM10	Travelers of Wah Fat Street
VSR-TM11	Hikers of MacLehose Trail Section 10
VSR-TM12	visitors of Sam Shing Temple in Castle Peak Road – Castle Peak Bay

VSRs at Pillar Point (PP)	
VSR-PP1	Vehicle Travelers at Lung Mun Road
VSR-PP2	Workers at EMSD Tuen Mun Vehicle Servicing Station and DSD Pillar Point STW
VSR-PP3	Workers at River Trade Terminal
VSR-PP4	Workers at Tuen Mun Area 40
VSR-PP6	Recreational Users of Butterfly Beach Park



KEY PLAN

LEGEND

- PROPOSED ELEVATED / AT-GRADE ROAD
- - - PROPOSED TUNNEL (UNDERGROUND WORK)
- · - · - VISUAL ENVELOPE
- 100 HEIGHT IN +MPD
- PP1 VSR VIEWING POINT
- COUNTRY PARK

C	THIRD ISSUE	LFM	08/23
B	SECOND ISSUE	LFM	04/23
A	FIRST ISSUE	LFM	01/23
Rev	Description	By	Date

Consultant

ARUP

Project title
Agreement No. CE 65/2021(HY)
Tuen Mun Bypass - Investigation

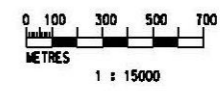
Drawing title
VISUALLY SENSITIVE RECEIVERS – TUEN MUN, PILLAR POINT AND NORTH LANTAU (SHEET 1)

Drawing no. FIGURE 11.7.1		Rev. C
Drawn RY	Date 06/22	Checked AW Approved SK
Scale 1 : 15000 @ A1	Status PRELIMINARY	

COPYRIGHT RESERVED

路政署 HIGHWAYS DEPARTMENT

MATCH LINE
FOR CONTINUATION
SEE DRG FIGURE 11.7.2



DO NOT SCALE DRAWING. CHECK ALL DIMENSIONS ON SITE.
ALL RIGHTS RESERVED.
© OVE ARUP & PARTNERS HONG KONG LIMITED.



FOR CONTINUATION
FIGURE 11.7.1
MATCH LINE

VSRs at North Lantau (NL)	
VSR-NL1	Workers and Travelers at Hong Kong International Airport
VSR-NL2	Travelers at Hong Kong Boundary Crossing Facilities
VSR-NL3	Workers and Future Residents at MTR Siu Ho Wan Depot

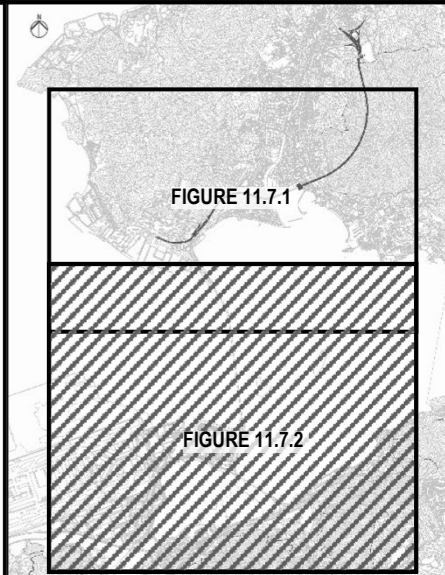


FIGURE 11.7.1

FIGURE 11.7.2

KEY PLAN

LEGEND

- PROPOSED ELEVATED / AT-GRADE ROAD
- PROPOSED TUNNEL
- VISUAL ENVELOPE
- 100 HEIGHT IN +MPD
- VSR VIEWING POINT
- COUNTRY PARK

NOTES:

1. PLEASE REFER TO FIGURE 11.7.1 FOR THE VSR'S SCHEDULE.

Rev	Description	By	Date
B	REVISION	LFM	08/23
A	FIRST ISSUE	LFM	06/22

Consultant

ARUP

Project title
Agreement No. CE 65/2021(HY)
Tuen Mun Bypass - Investigation

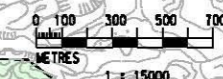
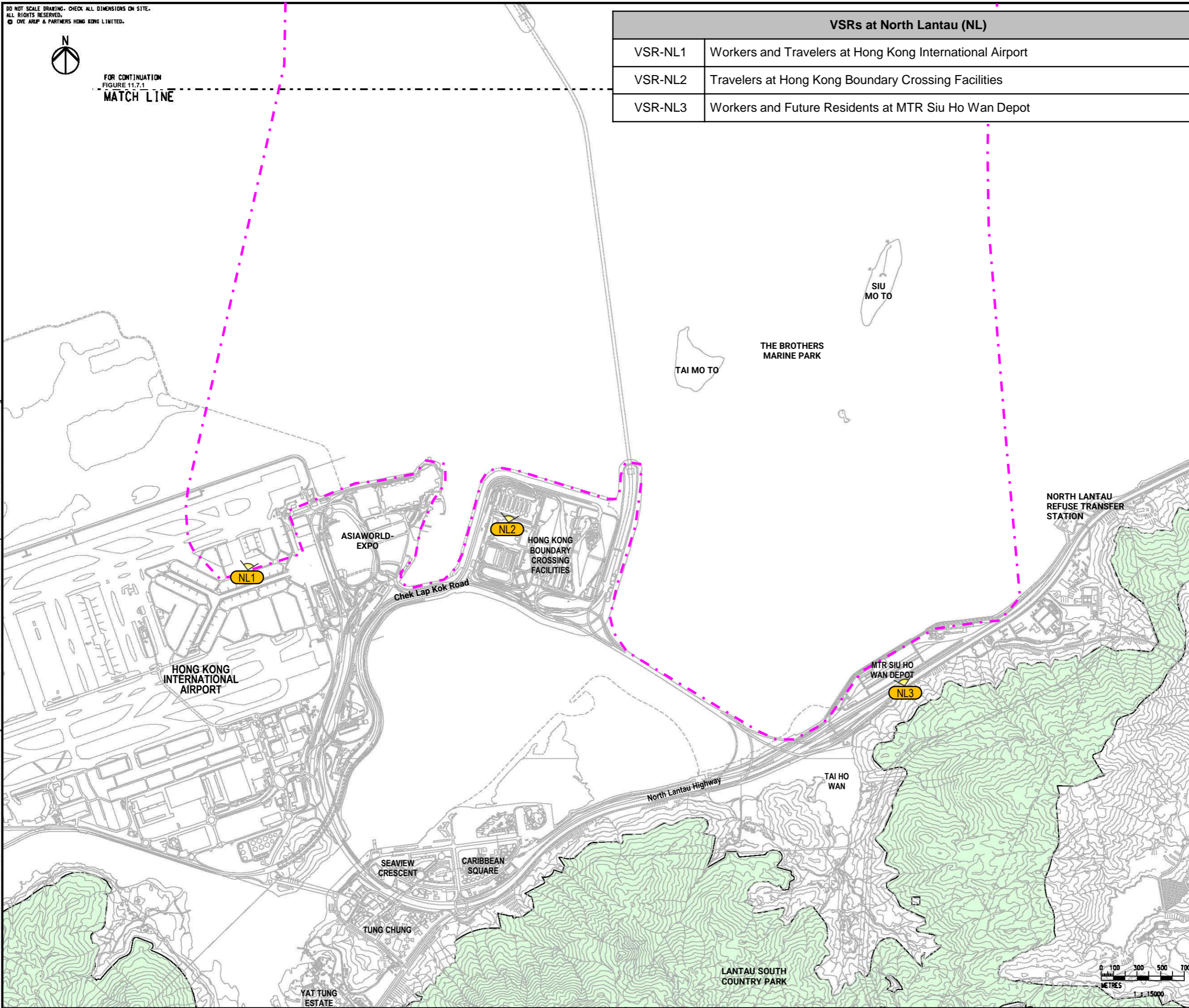
Drawing title
**VISUALLY SENSITIVE
RECEIVERS - TUEN MUN,
PILLAR POINT AND NORTH
LANTAU (SHEET 2)**

Drawing no.	FIGURE 11.7.2	Rev.	B
Drawn	RY	Date	06/22
Checked	AW	Approved	SK
Scale	1:15000 @ A1	Status	PRELIMINARY

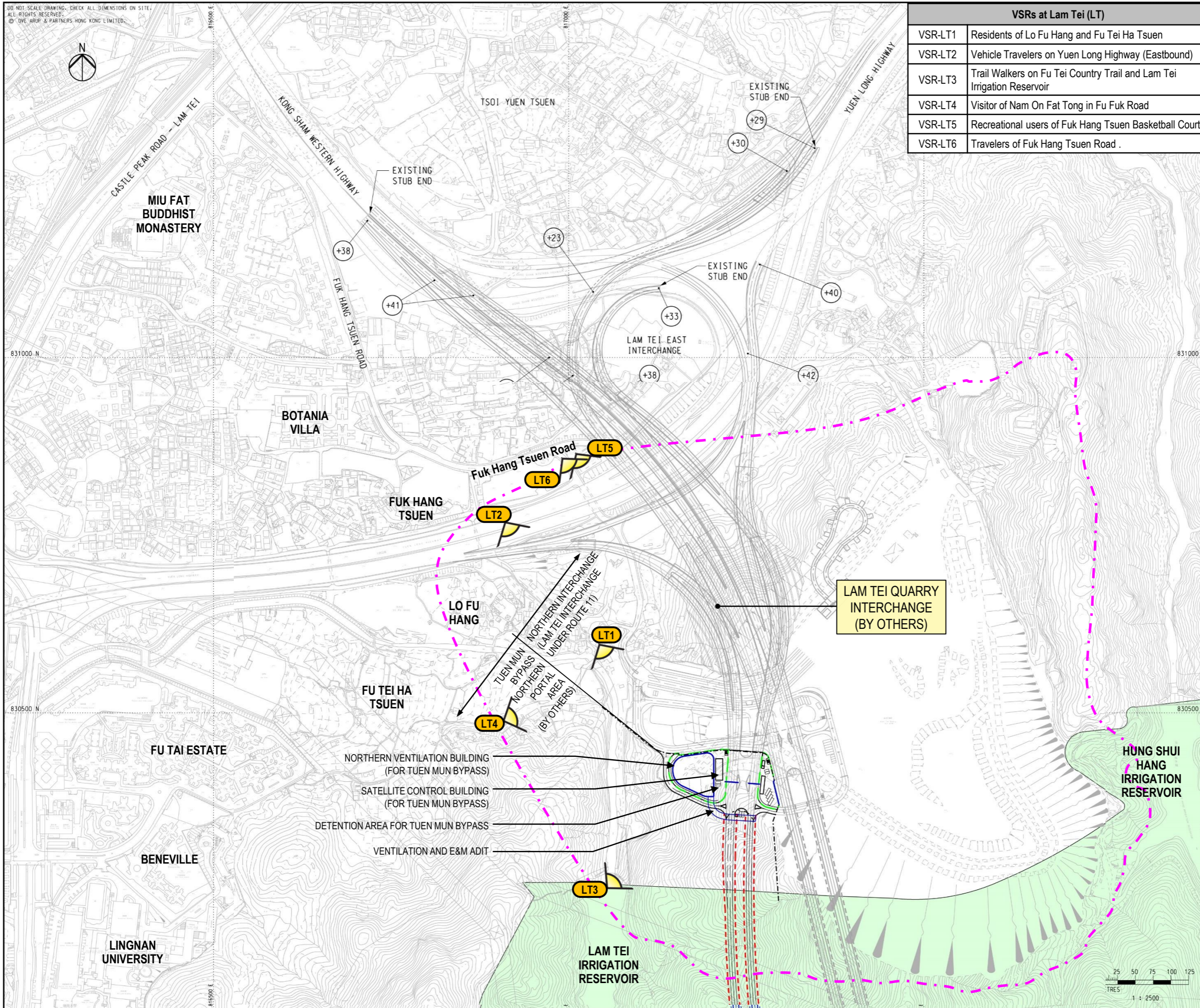
COPYRIGHT RESERVED



Printed by : 7/21/2022
Filename : J:\287000\287168-00 CE 652021 TMB\05_int_Proj_Data\05_90 CAD and BIM\02-CAD\Landscap\SKETCH\287168_SK_L_L_013.dgn



DO NOT SCALE DRAWING. CHECK ALL DIMENSIONS ON SITE.
ALL RIGHTS RESERVED.
© OVE ARUP & PARTNERS HONG KONG LIMITED.



VSRs at Lam Tei (LT)	
VSR-LT1	Residents of Lo Fu Hang and Fu Tei Ha Tsuen
VSR-LT2	Vehicle Travelers on Yuen Long Highway (Eastbound)
VSR-LT3	Trail Walkers on Fu Tei Country Trail and Lam Tei Irrigation Reservoir
VSR-LT4	Visitor of Nam On Fat Tong in Fu Fuk Road
VSR-LT5	Recreational users of Fuk Hang Tsuen Basketball Court;
VSR-LT6	Travelers of Fuk Hang Tsuen Road .

LEGEND	
	PROPOSED ELEVATED / AT-GRADE ROAD
	PROPOSED TUNNEL (UNDERGROUND WORK)
	VISUAL ENVELOPE
	VSR VIEWING POINT
	COUNTRY PARK

C	THIRD ISSUE	LFM	08/23
B	SECOND ISSUE	LFM	04/23
A	FIRST ISSUE	LFM	01/23
Rev	Description	By	Date

Consultant

ARUP

Project title
Agreement No. CE 65/2021(HY)
Tuen Mun Bypass - Investigation

Drawing title
VISUALLY SENSITIVE RECEIVERS – LAM TEI

Drawing no.	FIGURE 11.7.3	Rev.	C
Drawn	RY	Date	06/22
Checked	AW	Approved	SK
Scale	1 : 2500 @ A1	Status	PRELIMINARY

COPYRIGHT RESERVED

路政署
HIGHWAYS DEPARTMENT

