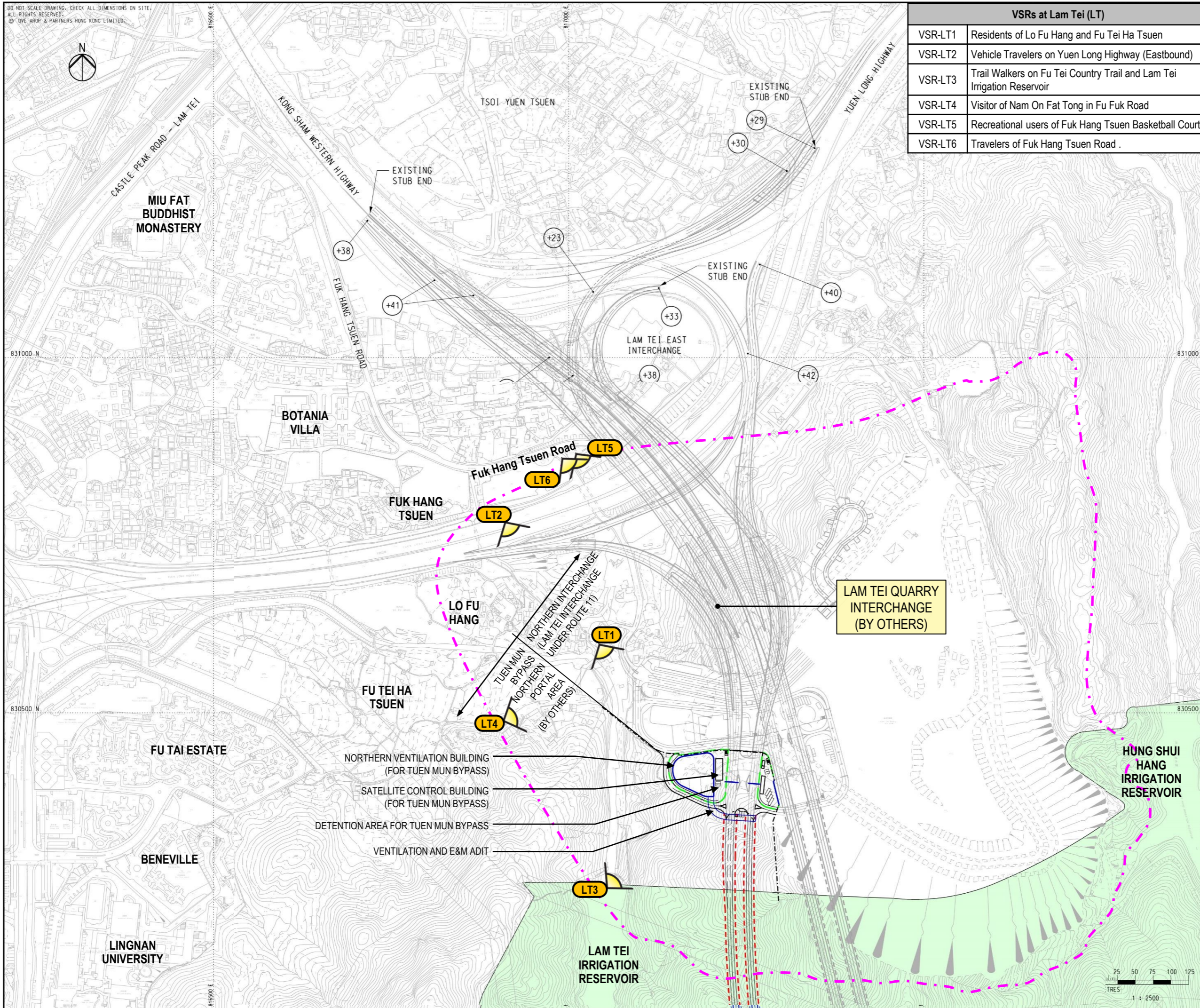


DO NOT SCALE DRAWING. CHECK ALL DIMENSIONS ON SITE.
ALL RIGHTS RESERVED.
© OVE ARUP & PARTNERS HONG KONG LIMITED.



VSRs at Lam Tei (LT)	
VSR-LT1	Residents of Lo Fu Hang and Fu Tei Ha Tsuen
VSR-LT2	Vehicle Travelers on Yuen Long Highway (Eastbound)
VSR-LT3	Trail Walkers on Fu Tei Country Trail and Lam Tei Irrigation Reservoir
VSR-LT4	Visitor of Nam On Fat Tong in Fu Fuk Road
VSR-LT5	Recreational users of Fuk Hang Tsuen Basketball Court;
VSR-LT6	Travelers of Fuk Hang Tsuen Road .

LEGEND	
	PROPOSED ELEVATED / AT-GRADE ROAD
	PROPOSED TUNNEL (UNDERGROUND WORK)
	VISUAL ENVELOPE
	VSR VIEWING POINT
	COUNTRY PARK

C	THIRD ISSUE	LFM	08/23
B	SECOND ISSUE	LFM	04/23
A	FIRST ISSUE	LFM	01/23
Rev	Description	By	Date

Consultant

ARUP

Project title
Agreement No. CE 65/2021(HY)
Tuen Mun Bypass - Investigation

Drawing title
VISUALLY SENSITIVE RECEIVERS – LAM TEI

Drawing no.	FIGURE 11.7.3	Rev.	C
Drawn	RY	Date	06/22
Checked	AW	Approved	SK
Scale	1 : 2500 @ A1	Status	PRELIMINARY

COPYRIGHT RESERVED

路政署
HIGHWAYS DEPARTMENT

