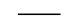
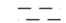
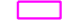




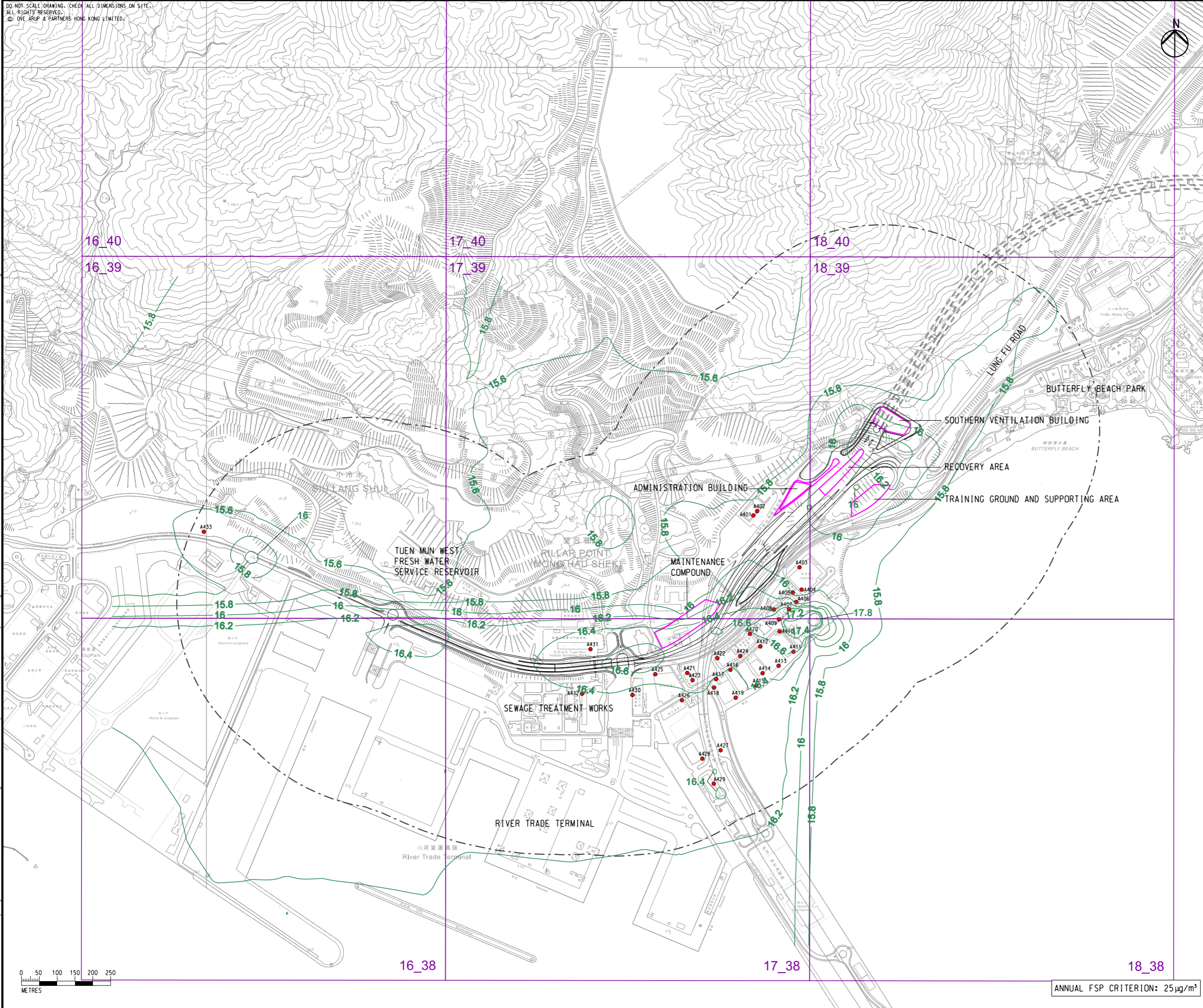


DO NOT SCALE DRAWING. CHECK ALL DIMENSIONS ON SITE.
 ALL RIGHTS RESERVED.
 © OVE ARUP & PARTNERS HONG KONG LIMITED.

- LEGEND**
-  PORTAL AREA AND AT-GRADED ROAD/ ELEVATED ROAD
 -  PROPOSED TUNNEL
 -  HIGHWAY/ TUNNEL OPERATION AND MAINTENANCE FACILITIES
 -  500M OPERATIONAL ASSESSMENT AREA
 -  CONCERNED PATH GRID
 -  EXISTING REPRESENTATIVE AIR SENSITIVE RECEIVERS
 -  FSP CONTOUR, $\mu\text{g}/\text{m}^3$



Rev	Description	By	Date
B	SECOND ISSUE	GL	08/23
A	FIRST ISSUE	GL	06/23

Consultant
ARUP

Project title
 Agreement No. CE 65/2021(HY)
 Tuén Mun Bypass - Investigation

Drawing title
CONTOURS OF CUMULATIVE ANNUAL FSP CONCERTRATION AT 1.5m ABOVE GROUND (YEAR 2048) IN PILLAR POINT

Drawing no. FIGURE 3.11b		Rev. B	
Drawn GL	Date 08/23	Checked TL	Approved FC
Scale 1:10000 @ A3		Status PRELIMINARY	

COPYRIGHT RESERVED



路政署
 HIGHWAYS DEPARTMENT

Printed by : 23/8/2023
 Filename : G:\env\project\287168-25\13 Drawing Deliverables\report\REP-XXX EIA Report\Figure 3.11b - Contours of Cumulative Annual FSP (Year 2048) in Pillar Point.dgn

ANNUAL FSP CRITERION: $25 \mu\text{g}/\text{m}^3$