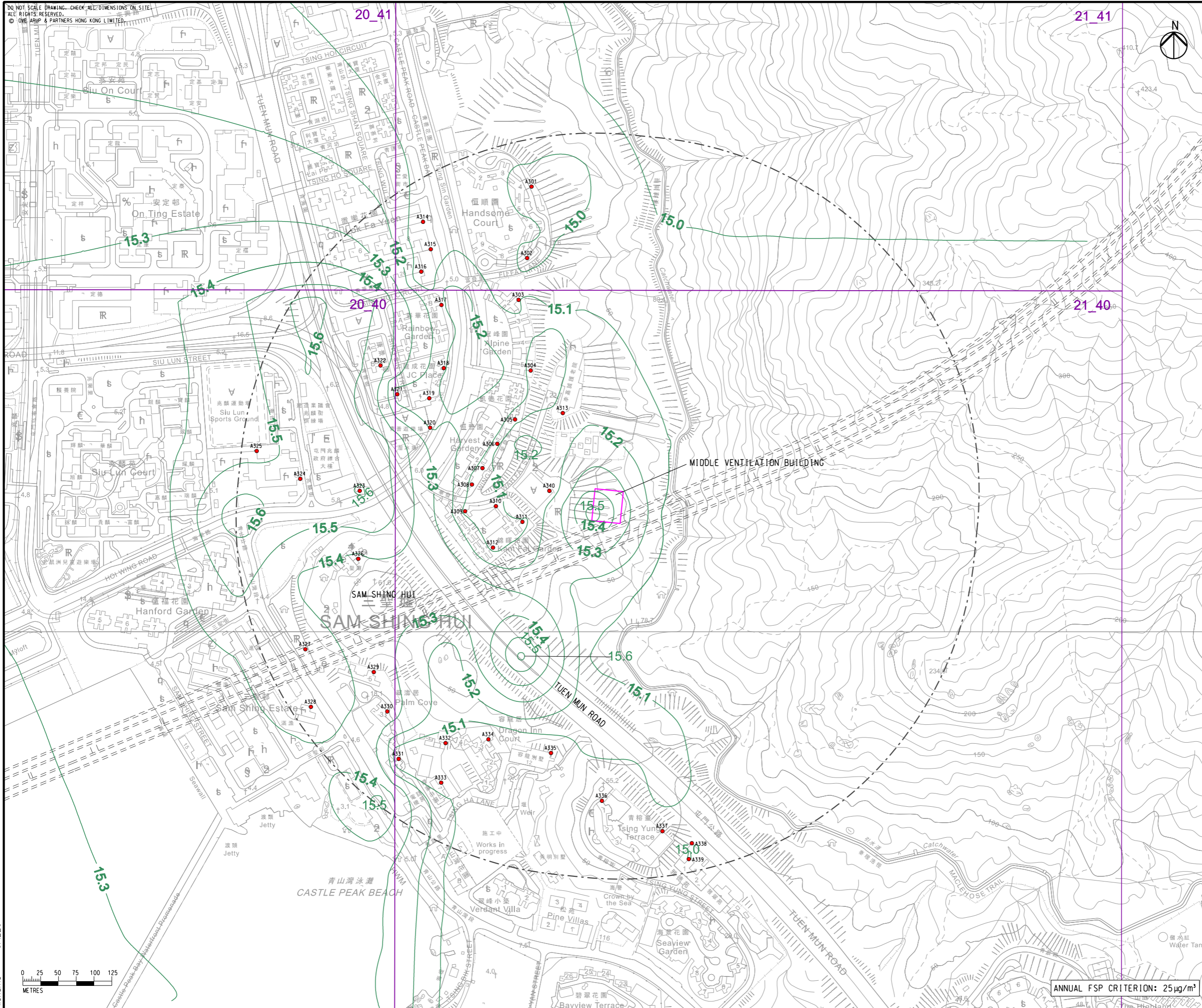


DO NOT SCALE DRAWING. CHECK ALL DIMENSIONS ON SITE.  
ALL RIGHTS RESERVED.  
© OVE ARUP & PARTNERS HONG KONG LIMITED



- LEGEND**
- PORTAL AREA AND AT-GRADED ROAD/ ELEVATED ROAD
  - PROPOSED TUNNEL
  - HIGHWAY/ TUNNEL OPERATION AND MAINTENANCE FACILITIES
  - 500M OPERATIONAL ASSESSMENT AREA
  - CONCERNED PATH GRID
  - EXISTING REPRESENTATIVE AIR SENSITIVE RECEIVERS
  - FSP CONTOUR,  $\mu\text{g}/\text{m}^3$

C	THIRD ISSUE	GL	08/23
B	SECOND ISSUE	GL	07/23
A	FIRST ISSUE	GL	06/23
Rev	Description	By	Date

Consultant  
**ARUP**

Project title  
Agreement No. CE 65/2021(HY)  
Tuen Mun Bypass - Investigation

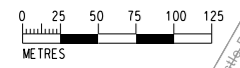
Drawing title  
**CONTOURS OF CUMULATIVE ANNUAL FSP CONCENTRATION AT 1.5m ABOVE GROUND (YEAR 2048) IN SAM SHING**

Drawing no. <b>FIGURE 3.11c</b>		Rev. <b>C</b>	
Drawn	Date	Checked	Approved
GL	08/23	TL	FC
Scale	1:5000 @ A3		Status
			PRELIMINARY

COPYRIGHT RESERVED

路政署  
HIGHWAYS DEPARTMENT

Printed by : \$DATES\$  
Filename : \$FILES\$



ANNUAL FSP CRITERION:  $25 \mu\text{g}/\text{m}^3$