

DO NOT SCALE DRAWING. CHECK ALL DIMENSIONS ON SITE.  
 ALL RIGHTS RESERVED.  
 © OVE ARUP & PARTNERS HONG KONG LIMITED.

Printed by : 23/8/2023  
 Filename : G:\env\project\287168-25\13 Drawing Deliverables\report\REP-XXX EIA Report\Figure 3.3a - Locations of Representative Air Sensitive Receivers in Lam Tei during Operational Phase.dgn



- LEGEND**
- PORTAL AREA AND AT-GRADED ROAD/ ELEVATED ROAD
  - PROPOSED TUNNEL
  - HIGHWAY/ TUNNEL OPERATION AND MAINTENANCE FACILITIES
  - 500M OPERATIONAL ASSESSMENT AREA
  - PLANNED ROUTE 11 (UNDER SEPERATE PROJECT)
  - COMMITTED/PLANNED DEVELOPMENTS

Rev	Description	By	Date
B	SECOND ISSUE	GL	08/23
A	FIRST ISSUE	GL	06/23

Consultant  
**ARUP**

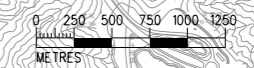
Project title  
 Agreement No. CE 65/2021(HY)  
 Tuen Mun Bypass - Investigation

Drawing title  
**LOCATIONS OF REPRESENTATIVE AIR SENSITIVE RECEIVERS IN LAM TEI DURING OPERATIONAL PHASE**

Drawing no.		Rev.	
FIGURE 3.3a		B	
Drawn	Date	Checked	Approved
GL	08/23	TL	FC
Scale	Status		PRELIMINARY
1:50000 @ A3			

COPYRIGHT RESERVED

路政署  
 HIGHWAYS DEPARTMENT



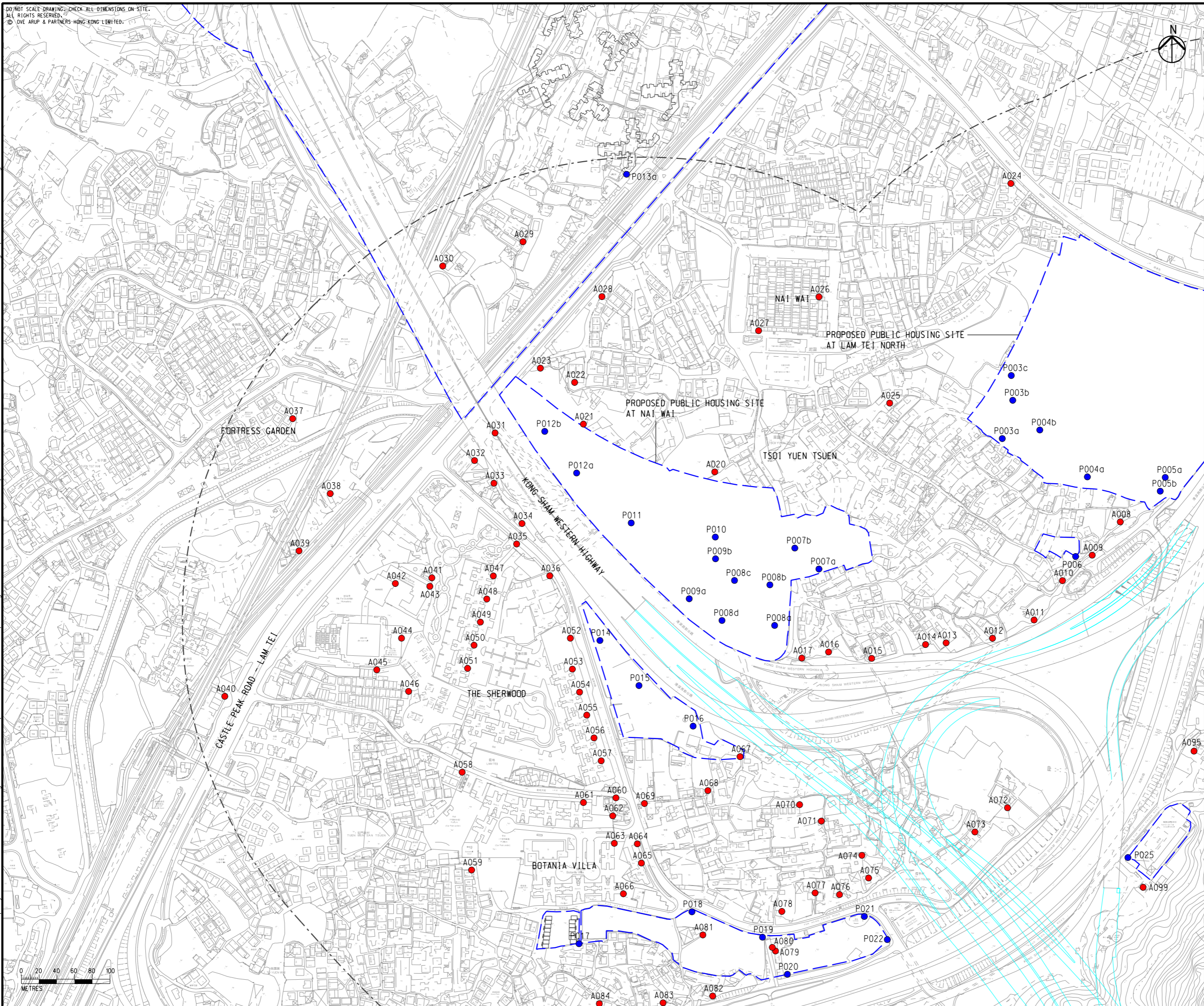


DO NOT SCALE DRAWING. CHECK ALL DIMENSIONS ON SITE.  
 ALL RIGHTS RESERVED.  
 © OVE ARUP & PARTNERS HONG KONG LIMITED.



- LEGEND**
- PORTAL AREA AND AT-GRADED ROAD/ ELEVATED ROAD
  - PROPOSED TUNNEL
  - 500M OPERATIONAL ASSESSMENT AREA
  - PLANNED ROUTE 11 (UNDER SEPERATE PROJECT)
  - COMMITTED/PLANNED DEVELOPMENTS
  - EXISTING REPRESENTATIVE AIR SENSITIVE RECEIVERS
  - COMMITTED/PLANNED REPRESENTATIVE AIR SENSITIVE RECEIVERS

Printed by : 23/8/2023  
 Filename : G:\env\project\287168-25\13 Drawing Deliverables\report\REP-XXX EIA Report\Figure 3.3ai - Locations of Representative Air Sensitive Receivers in Lam Tei during Operational Phase.dgn



Rev	Description	By	Date
B	SECOND ISSUE	GL	08/23
A	FIRST ISSUE	GL	06/23

Consultant  
**ARUP**

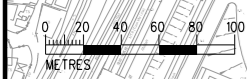
Project title  
 Agreement No. CE 65/2021(HY)  
 Tuen Mun Bypass - Investigation

Drawing title  
**LOCATIONS OF REPRESENTATIVE AIR SENSITIVE RECEIVERS IN LAM TEI DURING OPERATIONAL PHASE**

Drawing no.		Rev.	
FIGURE 3.3ai		B	
Drawn	Date	Checked	Approved
GL	08/23	TL	FC
Scale	Status		PRELIMINARY
1:4000 @ A3			

COPYRIGHT RESERVED

路政署  
 HIGHWAYS DEPARTMENT



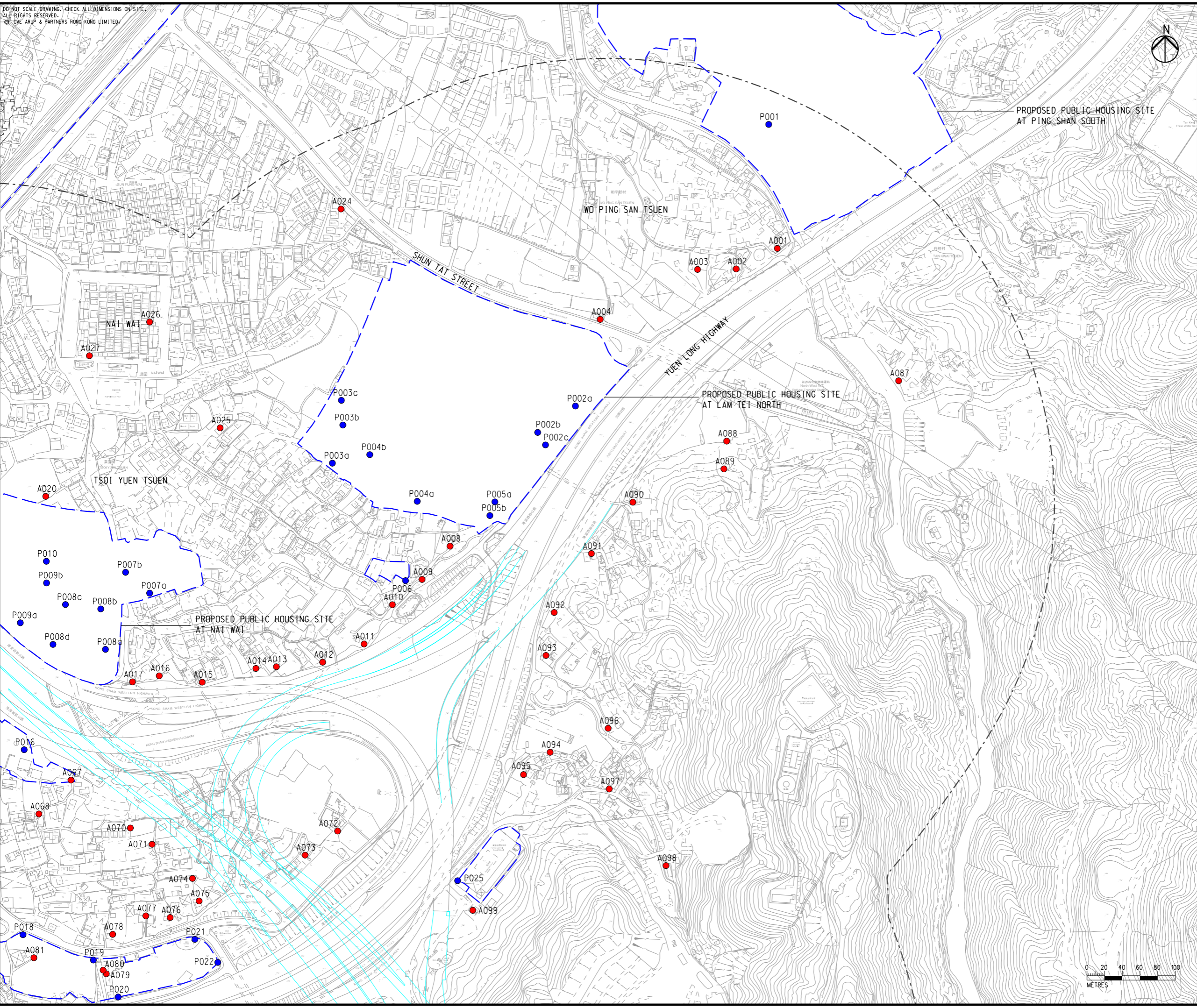


DO NOT SCALE DRAWING - CHECK ALL DIMENSIONS ON SITE.  
ALL RIGHTS RESERVED.  
© ARUP & PARTNERS HONG KONG LIMITED.



- LEGEND**
- PORTAL AREA AND AT-GRADED ROAD/ ELEVATED ROAD
  - PROPOSED TUNNEL
  - 500M OPERATIONAL ASSESSMENT AREA
  - PLANNED ROUTE 11 (UNDER SEPERATE PROJECT)
  - COMMITTED/PLANNED DEVELOPMENTS
  - EXISTING REPRESENTATIVE AIR SENSITIVE RECEIVERS
  - COMMITTED/PLANNED REPRESENTATIVE AIR SENSITIVE RECEIVERS

Printed by : 23/8/2023  
Filename : G:\env\project\287168-25\13 Drawing Deliverables\report\REP-XXX EIA Report\Figure 3.3a ii - Locations of Representative Air Sensitive Receivers in Lam Tei during Operational Phase.dgn



Rev	Description	By	Date
B	SECOND ISSUE	GL	08/23
A	FIRST ISSUE	GL	06/23

Consultant  
**ARUP**

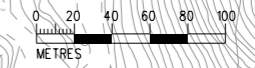
Project title  
Agreement No. CE 65/2021(HY)  
Tuen Mun Bypass - Investigation

Drawing title  
**LOCATIONS OF REPRESENTATIVE AIR SENSITIVE RECEIVERS IN LAM TEI DURING OPERATIONAL PHASE**

Drawing no. <b>FIGURE 3.3a ii</b>		Rev. <b>B</b>	
Drawn GL	Date 08/23	Checked TL	Approved FC
Scale 1:4000 @ A3		Status PRELIMINARY	

COPYRIGHT RESERVED

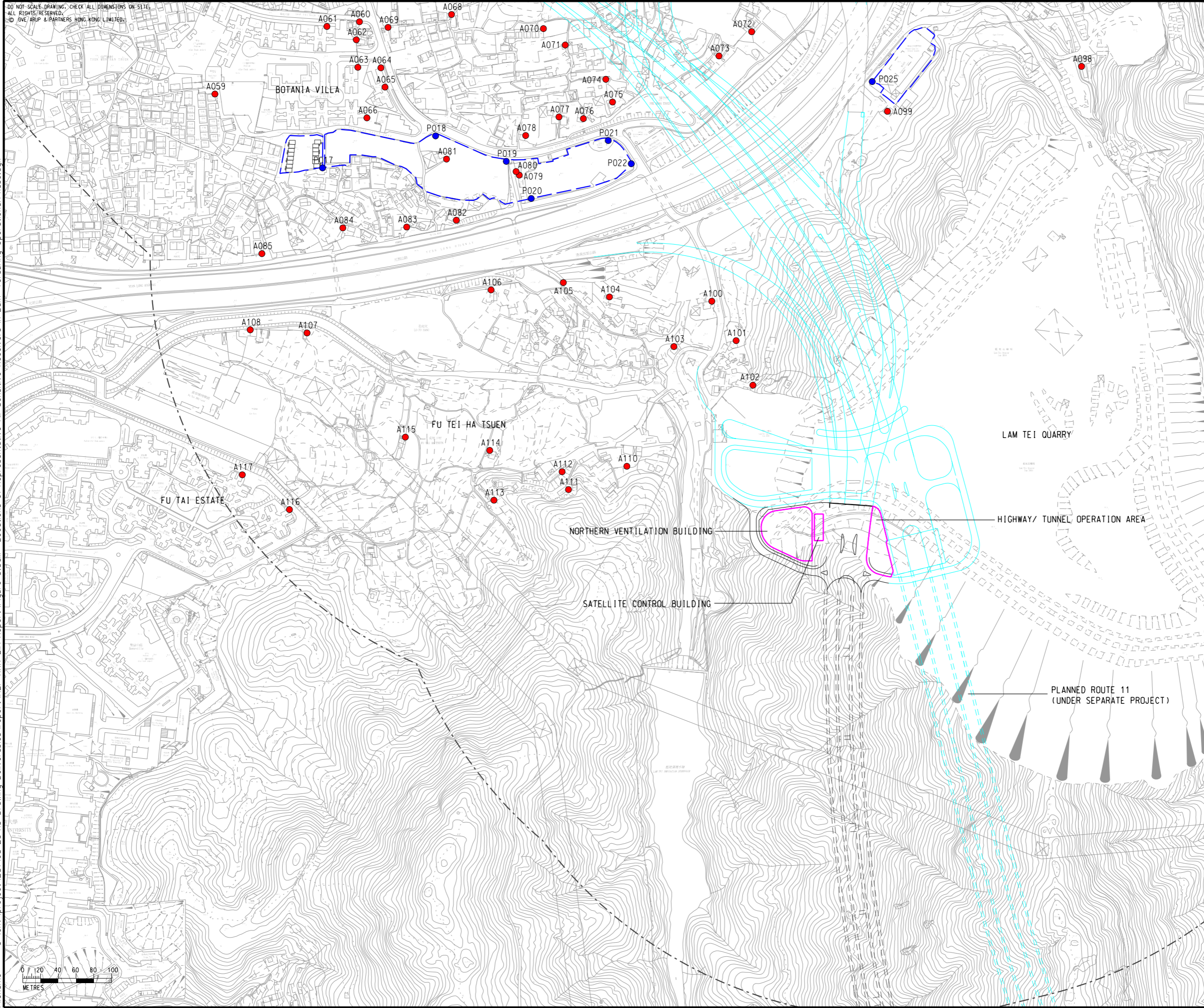
**路政署**  
**HIGHWAYS DEPARTMENT**





DO NOT SCALE DRAWING. CHECK ALL DIMENSIONS ON SITE.  
 ALL RIGHTS RESERVED.  
 © OVE ARUP & PARTNERS HONG KONG LIMITED.

Printed by : 9/14/2023  
 Filename : G:\env\project\287168-25\13 Drawing Deliverables\report\REP-XXX EIA Report\Figure 3.3aiii - Locations of Representative Air Sensitive Receivers in Lam Tei during Operational Phase.dgn



- LEGEND**
- PORTAL AREA AND AT-GRADED ROAD/ ELEVATED ROAD
  - PROPOSED TUNNEL
  - HIGHWAY/ TUNNEL OPERATION AND MAINTENANCE FACILITIES
  - 500M OPERATIONAL ASSESSMENT AREA
  - PLANNED ROUTE 11 (UNDER SEPARATE PROJECT)
  - COMMITTED/PLANNED DEVELOPMENTS
  - EXISTING REPRESENTATIVE AIR SENSITIVE RECEIVERS
  - COMMITTED/PLANNED REPRESENTATIVE AIR SENSITIVE RECEIVERS

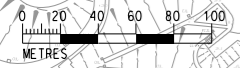
Rev	Description	By	Date
B	SECOND ISSUE	GL	08/23
A	FIRST ISSUE	GL	06/23

Consultant  
**ARUP**

Project title  
 Agreement No. CE 65/2021(HY)  
 Tuen Mun Bypass - Investigation

Drawing title  
**LOCATIONS OF REPRESENTATIVE AIR SENSITIVE RECEIVERS IN LAM TEI DURING OPERATIONAL PHASE**

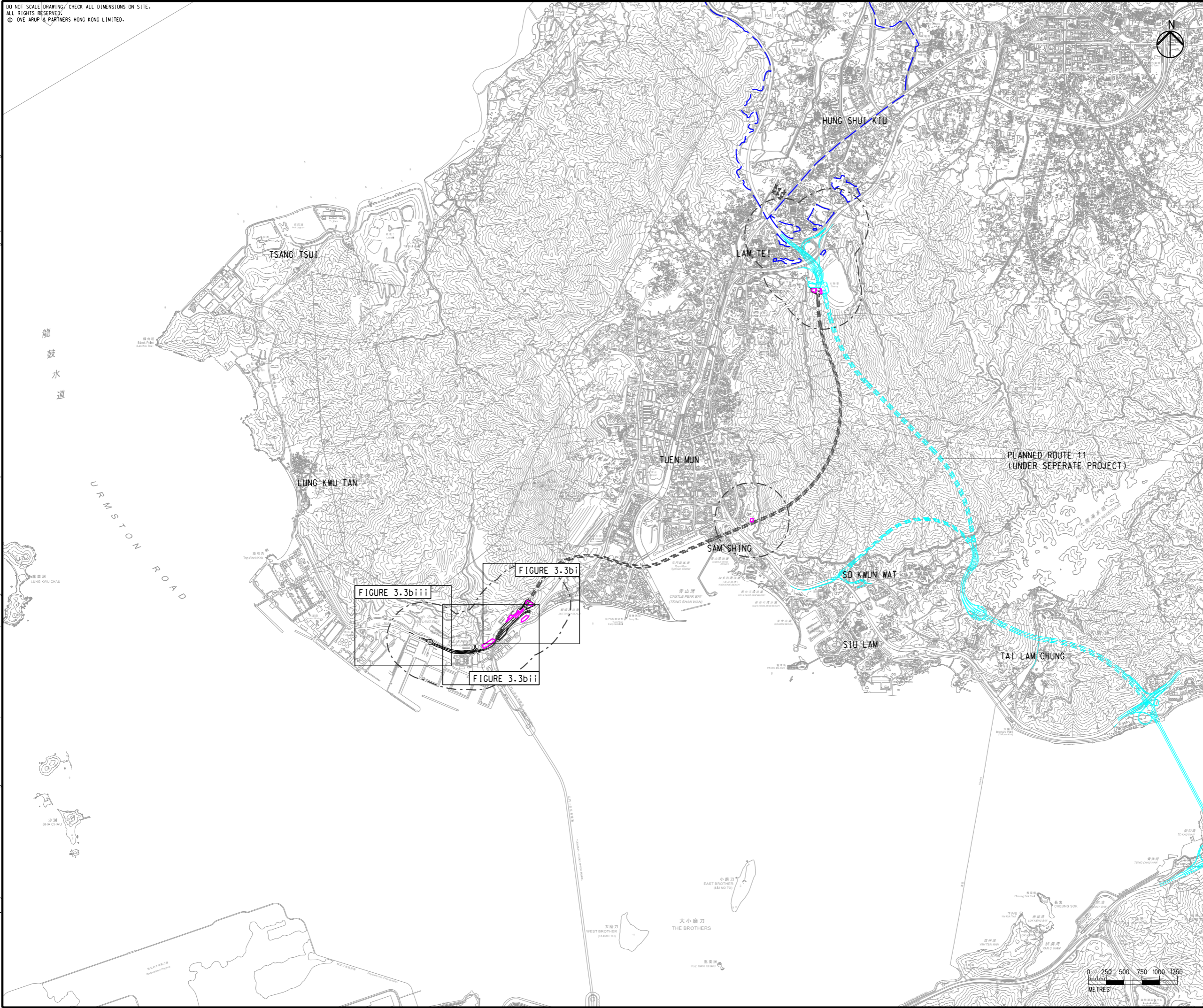
Drawing no. <b>FIGURE 3.3aiii</b>		Rev. <b>B</b>	
Drawn GL	Date 08/23	Checked TL	Approved FC
Scale 1:4000 @ A3		Status PRELIMINARY	





DO NOT SCALE DRAWING. CHECK ALL DIMENSIONS ON SITE.  
 ALL RIGHTS RESERVED.  
 © OVE ARUP & PARTNERS HONG KONG LIMITED.

Printed by : 23/8/2023  
 Filename : G:\env\project\287168-25\13 Drawing Deliverables\report\REP-XXX EIA Report\Figure 3.3b - Locations of Representative Air Sensitive Receivers in Pillar Point during Operational Phase.dgn



- LEGEND**
- PORTAL AREA AND AT-GRADED ROAD/ ELEVATED ROAD
  - PROPOSED TUNNEL
  - HIGHWAY/ TUNNEL OPERATION AND MAINTENANCE FACILITIES
  - 500M OPERATIONAL ASSESSMENT AREA
  - PLANNED ROUTE 11 (UNDER SEPERATE PROJECT)
  - COMMITTED/PLANNED DEVELOPMENTS

Rev	Description	By	Date
B	SECOND ISSUE	GL	08/23
A	FIRST ISSUE	GL	06/23

Consultant  
**ARUP**

Project title  
 Agreement No. CE 65/2021(HY)  
 Tuen Mun Bypass - Investigation

Drawing title  
**LOCATIONS OF REPRESENTATIVE AIR SENSITIVE RECEIVERS IN PILLAR POINT DURING OPERATIONAL PHASE**

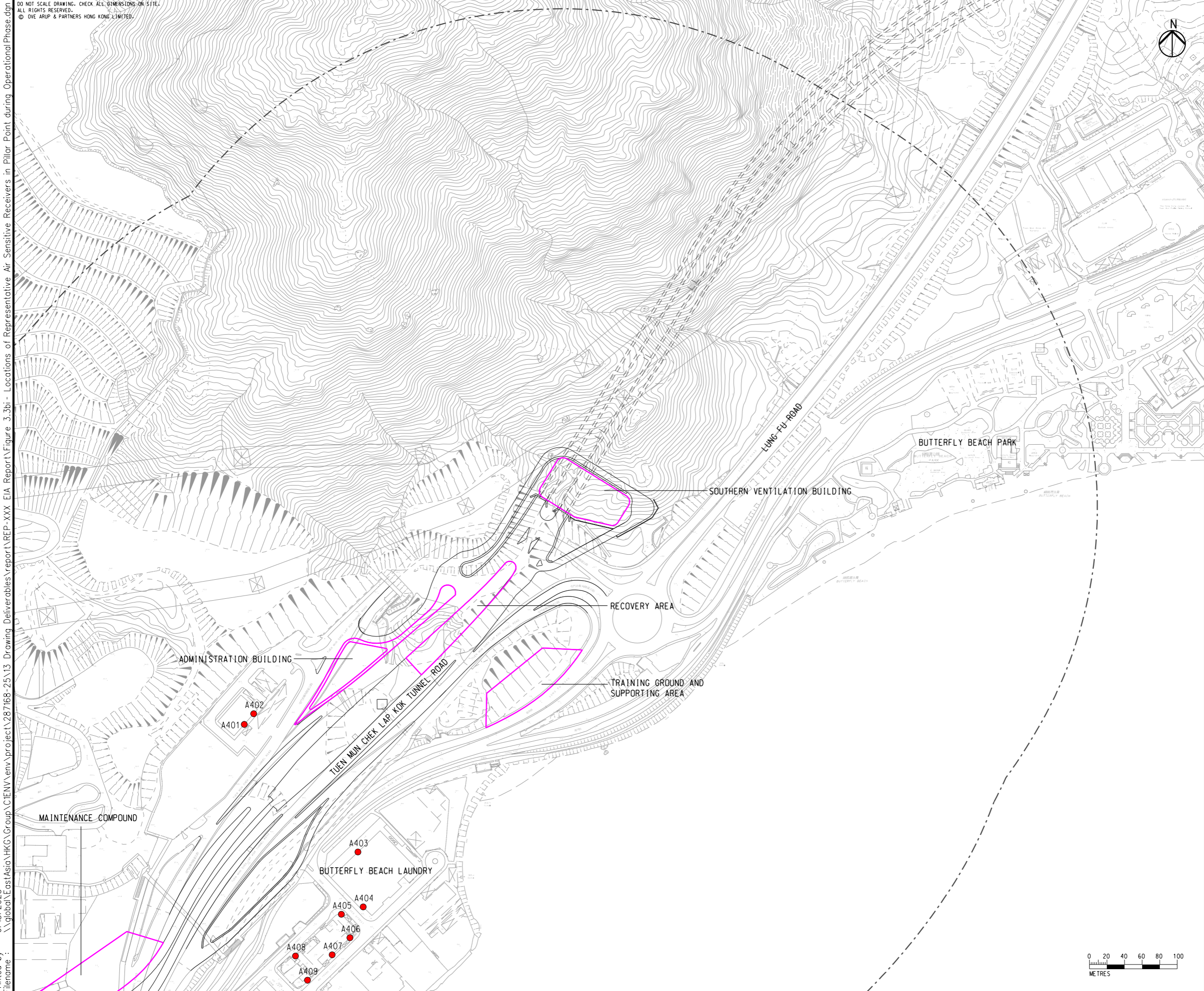
Drawing no. <b>FIGURE 3.3b</b>		Rev. <b>B</b>	
Drawn GL	Date 08/23	Checked TL	Approved FC
Scale 1:50000 @ A3		Status PRELIMINARY	

COPYRIGHT RESERVED

路政署  
 HIGHWAYS DEPARTMENT



DO NOT SCALE DRAWING. CHECK ALL DIMENSIONS ON SITE.  
 ALL RIGHTS RESERVED.  
 © OVE ARUP & PARTNERS HONG KONG LIMITED.



- LEGEND**
- PORTAL AREA AND AT-GRADED ROAD/ ELEVATED ROAD
  - PROPOSED TUNNEL
  - HIGHWAY/ TUNNEL OPERATION AND MAINTENANCE FACILITIES
  - 500M OPERATIONAL ASSESSMENT AREA
  - EXISTING REPRESENTATIVE AIR SENSITIVE RECEIVERS



Printed by : 6/15/2023  
 Filename : \\global\EastAsia\HK\Group\CIENV\env\project\287168-25\13 Drawing Deliverables\report\REP-XXX EIA Report\Figure 3.3bi - Locations of Representative Air Sensitive Receivers in Pillar Point during Operational Phase.dgn

A	FIRST ISSUE	GL	06/23
Rev	Description	By	Date

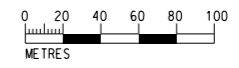
Consultant  
**ARUP**

Project title  
 Agreement No. CE 65/2021(HY)  
 Tuen Mun Bypass - Investigation

Drawing title  
**LOCATIONS OF REPRESENTATIVE AIR SENSITIVE RECEIVERS IN PILLAR POINT DURING OPERATIONAL PHASE**

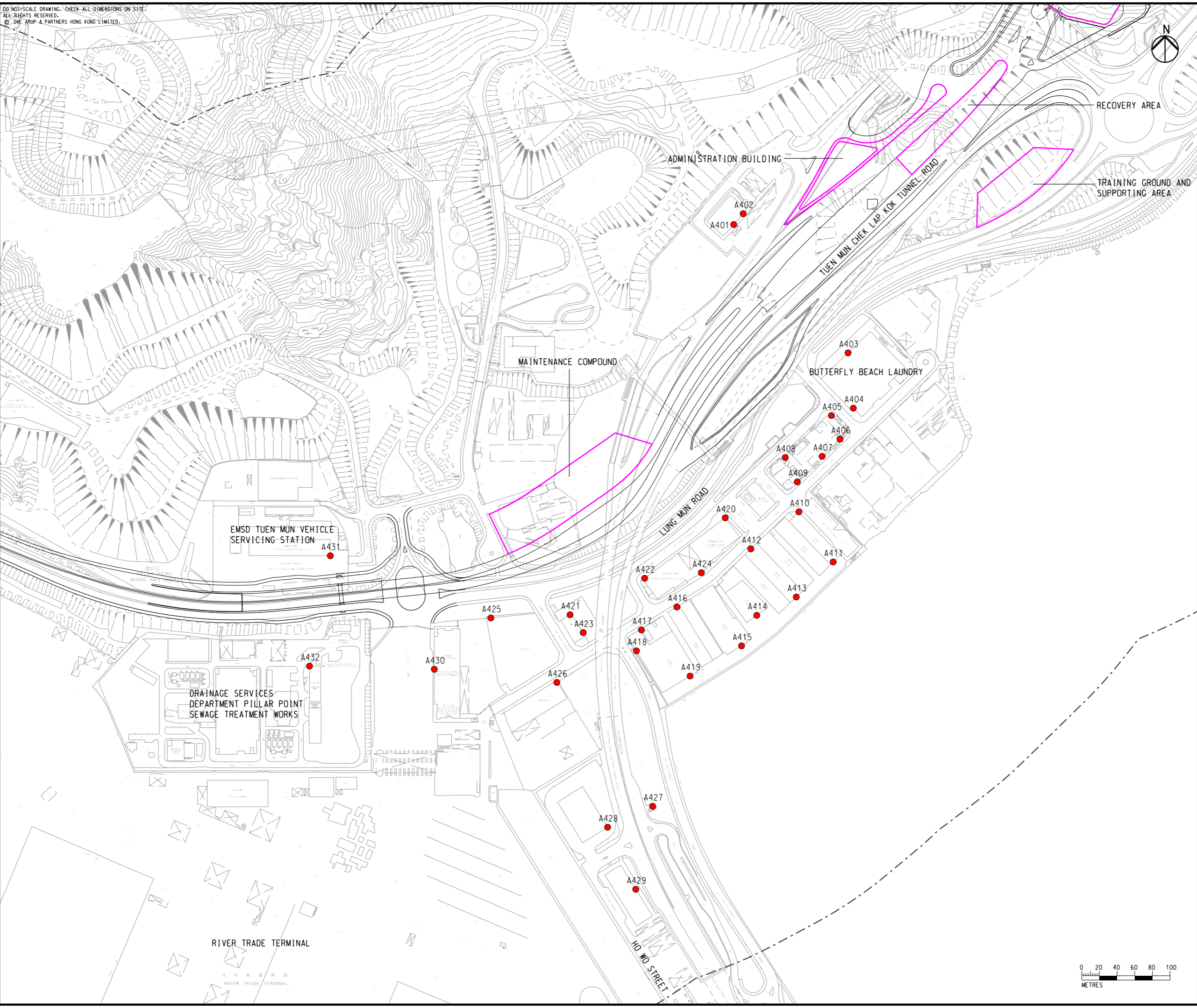
Drawing no. <b>FIGURE 3.3bi</b>		Rev. <b>A</b>	
Drawn GL	Date 06/23	Checked TL	Approved FC
Scale 1:4000 @ A3		Status PRELIMINARY	

COPYRIGHT RESERVED





Printed by : 6/15/2023  
 Filename : \\global\EastAsia\HK\Group\CI\ENV\env\project\287168-25\13 Drawing Deliverables\report\REP-XXX EIA Report\Figure 3.3bi - Locations of Representative Air Sensitive Receivers in Pillar Point during Operational Phase.dgn



- LEGEND**
- PORTAL AREA AND AT-GRADED ROAD/ ELEVATED ROAD
  - PROPOSED TUNNEL
  - HIGHWAY/ TUNNEL OPERATION AND MAINTENANCE FACILITIES
  - 500M OPERATIONAL ASSESSMENT AREA
  - EXISTING REPRESENTATIVE AIR SENSITIVE RECEIVERS

Rev	Description	By	Date
A	FIRST ISSUE	GL	06/23

Consultant  
**ARUP**

Project title  
 Agreement No. CE 65/2021(HY)  
 Tuen Mun Bypass - Investigation

Drawing title  
**LOCATIONS OF REPRESENTATIVE AIR SENSITIVE RECEIVERS IN PILLAR POINT DURING OPERATIONAL PHASE**

Drawing no. <b>FIGURE 3.3bi</b>		Rev. <b>A</b>	
Drawn GL	Date 06/23	Checked TL	Approved FC
Scale 1:4000 @ A3		Status PRELIMINARY	

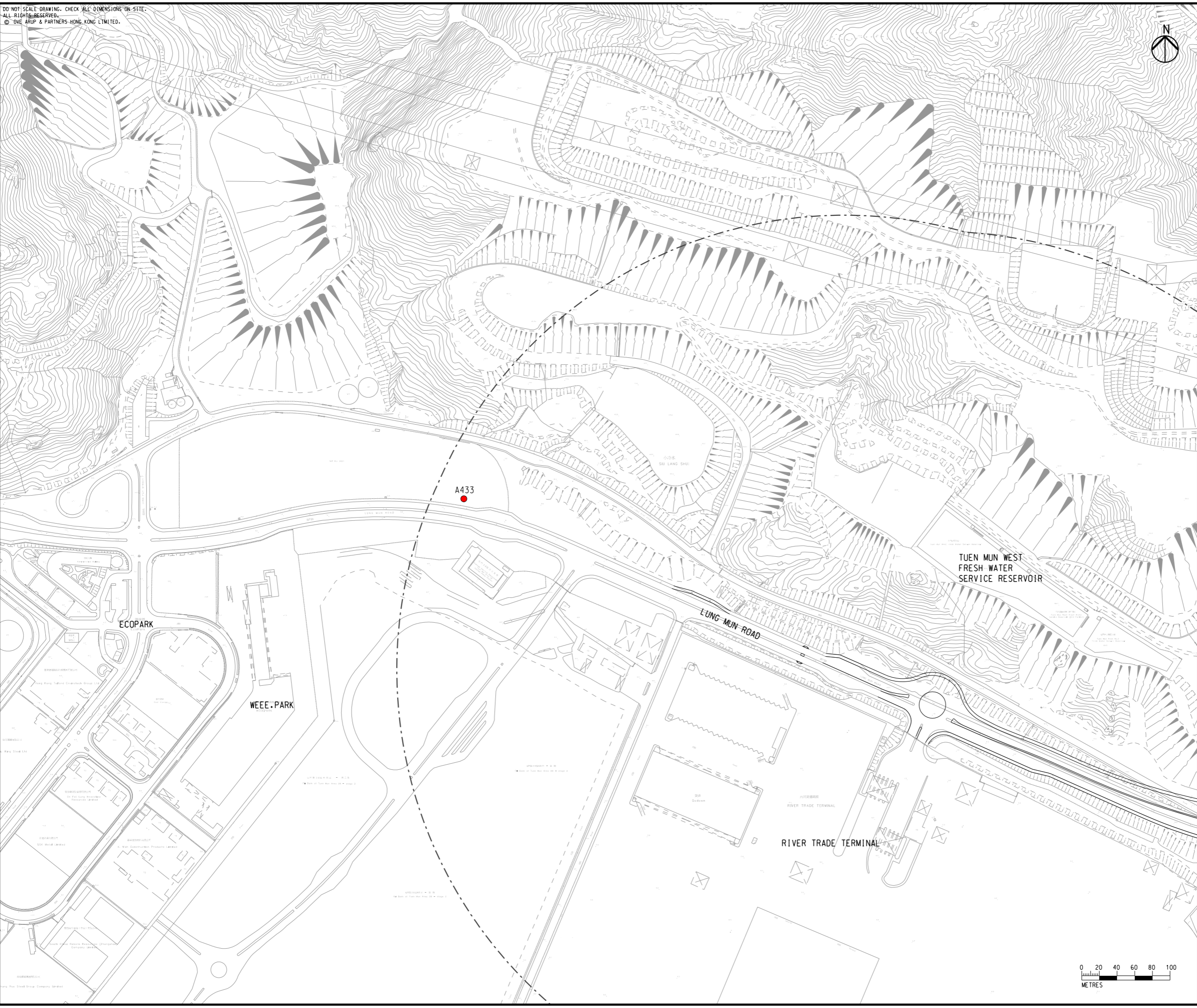
COPYRIGHT RESERVED

路政署  
 HIGHWAYS DEPARTMENT



Printed by : 6/15/2023  
 Filename : \\global\EastAsia\HKG\Group\CI\ENV\env\project\287168-25\13 Drawing Deliverables\report\REP-XXX EIA Report\Figure 3.3biii - Locations of Representative Air Sensitive Receivers in Pillar Point during Operational Phase.dgn

DO NOT SCALE DRAWING. CHECK ALL DIMENSIONS ON-SITE.  
 ALL RIGHTS RESERVED.  
 © 2016 ARUP & PARTNERS HONG KONG LIMITED.



- LEGEND**
- PORTAL AREA AND AT-GRADED ROAD/ ELEVATED ROAD
  - PROPOSED TUNNEL
  - 500M OPERATIONAL ASSESSMENT AREA
  - EXISTING REPRESENTATIVE AIR SENSITIVE RECEIVERS

Rev	Description	By	Date
A	FIRST ISSUE	GL	06/23

Consultant  
**ARUP**

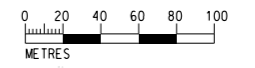
Project title  
 Agreement No. CE 65/2021(HY)  
 Tuen Mun Bypass - Investigation

Drawing title  
**LOCATIONS OF REPRESENTATIVE AIR SENSITIVE RECEIVERS IN PILLAR POINT DURING OPERATIONAL PHASE**

Drawing no. <b>FIGURE 3.3biii</b>		Rev. <b>A</b>	
Drawn GL	Date 06/23	Checked TL	Approved FC
Scale 1:4000 @ A3		Status PRELIMINARY	

COPYRIGHT RESERVED

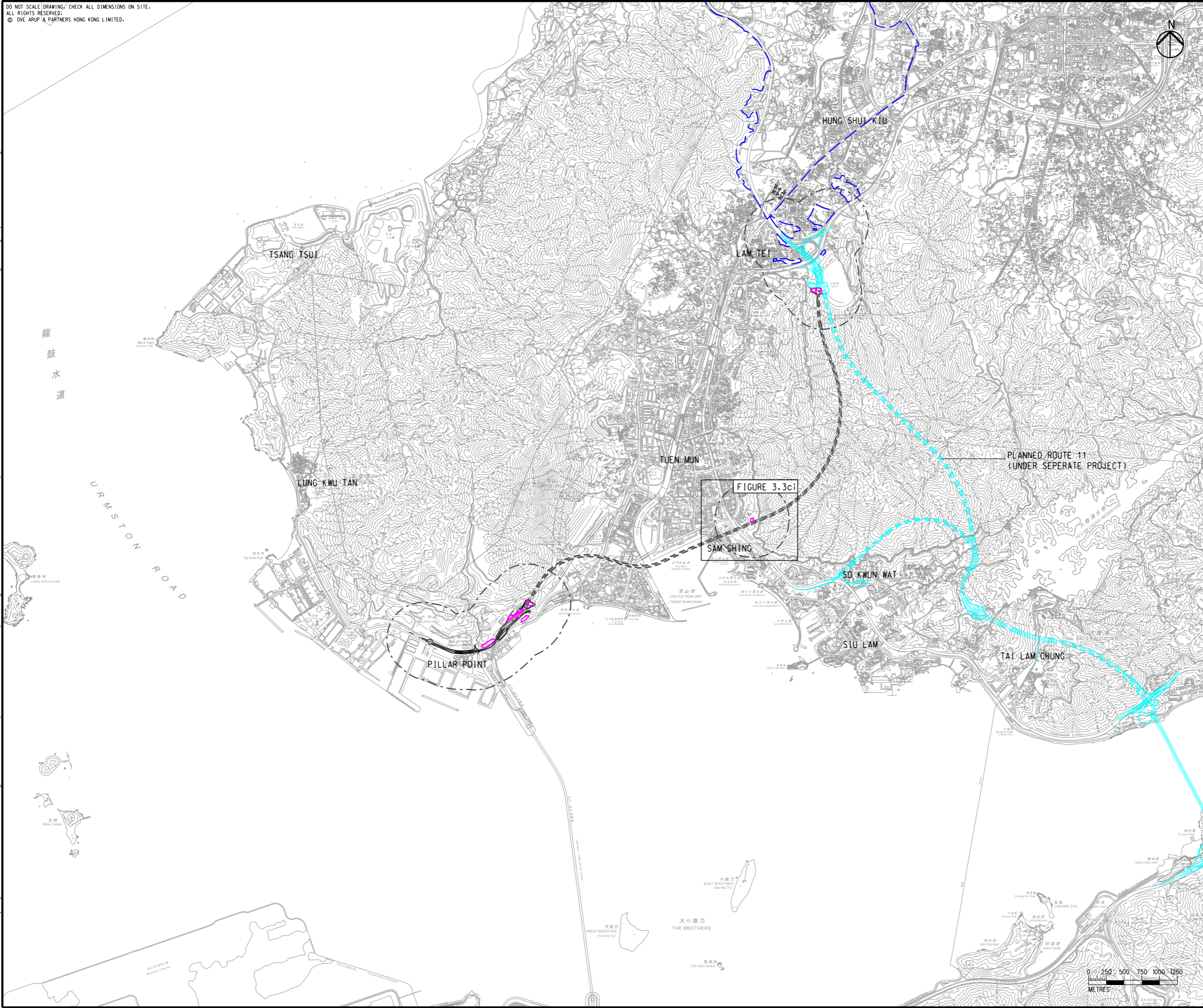
路政署  
 HIGHWAYS DEPARTMENT





DO NOT SCALE DRAWING. CHECK ALL DIMENSIONS ON SITE.  
 ALL RIGHTS RESERVED.  
 © OVE ARUP & PARTNERS HONG KONG LIMITED.

Printed by : 23/8/2023  
 Filename : G:\env\project\287168-25\13 Drawing Deliverables\report\REP-XXX EIA Report\Figure 3.3c - Locations of Representative Air Sensitive Receivers in Sam Shing during Operational Phase.dgn



- LEGEND**
- PORTAL AREA AND AT-GRADED ROAD/ ELEVATED ROAD
  - PROPOSED TUNNEL
  - HIGHWAY/ TUNNEL OPERATION AND MAINTENANCE FACILITIES
  - 500M OPERATIONAL ASSESSMENT AREA
  - PLANNED ROUTE 11 (UNDER SEPERATE PROJECT)
  - COMMITTED/PLANNED DEVELOPMENTS

Rev	Description	By	Date
C	THIRD ISSUE	GL	08/23
B	SECOND ISSUE	GL	07/23
A	FIRST ISSUE	GL	06/23

Consultant  
**ARUP**

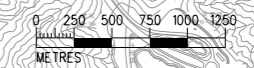
Project title  
 Agreement No. CE 65/2021(HY)  
 Tuen Mun Bypass - Investigation

Drawing title  
**LOCATIONS OF REPRESENTATIVE AIR SENSITIVE RECEIVERS IN SAM SHING DURING OPERATIONAL PHASE**

Drawing no.		Rev.	
FIGURE 3.3c		C	
Drawn	Date	Checked	Approved
GL	08/23	TL	FC
Scale	Status		PRELIMINARY
1:50000 @ A3			

COPYRIGHT RESERVED

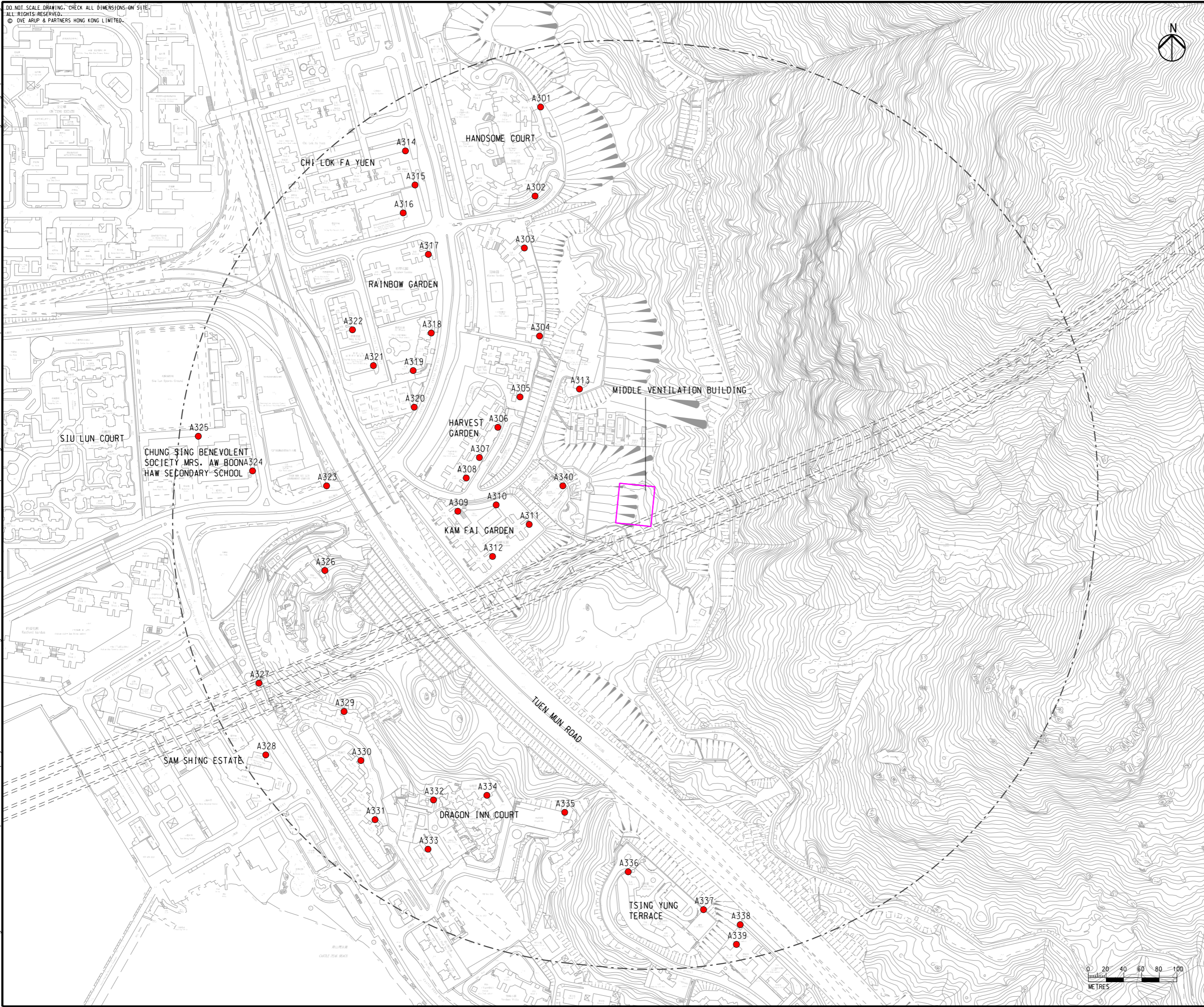
路政署  
 HIGHWAYS DEPARTMENT





Printed by : 7/21/2023  
 Filename : \\global\EastAsia\HKG\Group\CI\ENV\env\project\287168-25\13 Drawing Deliverables\report\REP-XXX EIA Report\Figure 3.3ci - Locations of Representative Air Sensitive Receivers in Sam Shing during Operational Phase.dgn

DO NOT SCALE DRAWING. CHECK ALL DIMENSIONS ON SITE.  
 ALL RIGHTS RESERVED.  
 © OVE ARUP & PARTNERS HONG KONG LIMITED.



- LEGEND**
- PORTAL AREA AND AT-GRADED ROAD/ ELEVATED ROAD
  - PROPOSED TUNNEL
  - HIGHWAY/ TUNNEL OPERATION AND MAINTENANCE FACILITIES
  - 500M OPERATIONAL ASSESSMENT AREA
  - EXISTING REPRESENTATIVE AIR SENSITIVE RECEIVERS

Rev	Description	By	Date
B	SECOND ISSUE	GL	07/23
A	FIRST ISSUE	GL	06/23

Consultant  
**ARUP**

Project title  
 Agreement No. CE 65/2021(HY)  
 Tuen Mun Bypass - Investigation

Drawing title  
**LOCATIONS OF REPRESENTATIVE AIR SENSITIVE RECEIVERS IN SAM SHING DURING OPERATIONAL PHASE**

Drawing no.		Rev.	
FIGURE 3.3ci		B	
Drawn	Date	Checked	Approved
GL	07/23	TL	FC
Scale	Status		PRELIMINARY
1:4000 @ A3			

COPYRIGHT RESERVED

路政署  
 HIGHWAYS DEPARTMENT

