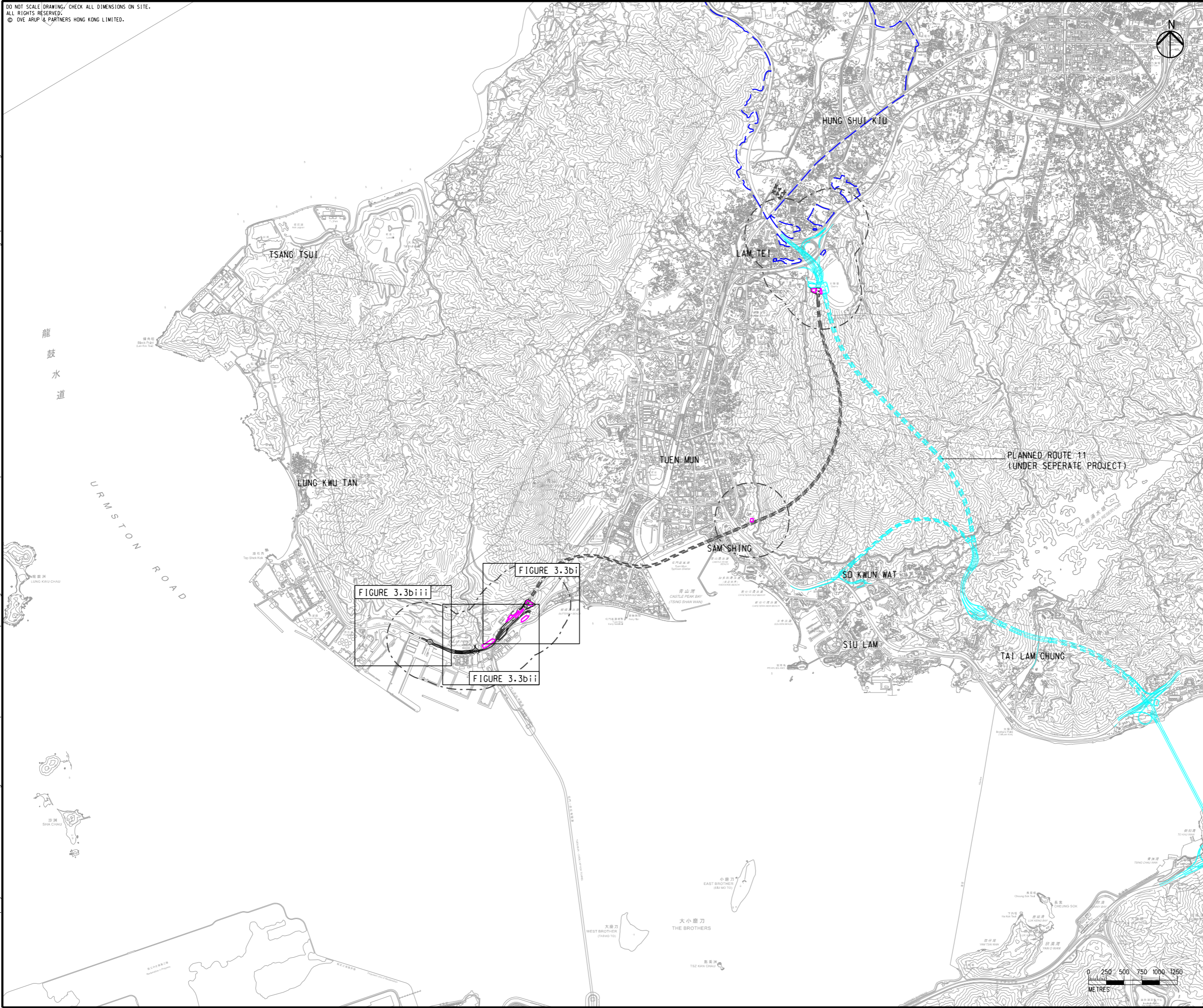


DO NOT SCALE DRAWING. CHECK ALL DIMENSIONS ON SITE.
 ALL RIGHTS RESERVED.
 © OVE ARUP & PARTNERS HONG KONG LIMITED.

Printed by : 23/8/2023
 Filename : G:\env\project\287168-25\13 Drawing Deliverables\report\REP-XXX EIA Report\Figure 3.3b - Locations of Representative Air Sensitive Receivers in Pillar Point during Operational Phase.dgn



- LEGEND**
- PORTAL AREA AND AT-GRADED ROAD/ ELEVATED ROAD
 - PROPOSED TUNNEL
 - HIGHWAY/ TUNNEL OPERATION AND MAINTENANCE FACILITIES
 - 500M OPERATIONAL ASSESSMENT AREA
 - PLANNED ROUTE 11 (UNDER SEPERATE PROJECT)
 - COMMITTED/PLANNED DEVELOPMENTS

Rev	Description	By	Date
B	SECOND ISSUE	GL	08/23
A	FIRST ISSUE	GL	06/23

Consultant
ARUP

Project title
 Agreement No. CE 65/2021(HY)
 Tuen Mun Bypass - Investigation

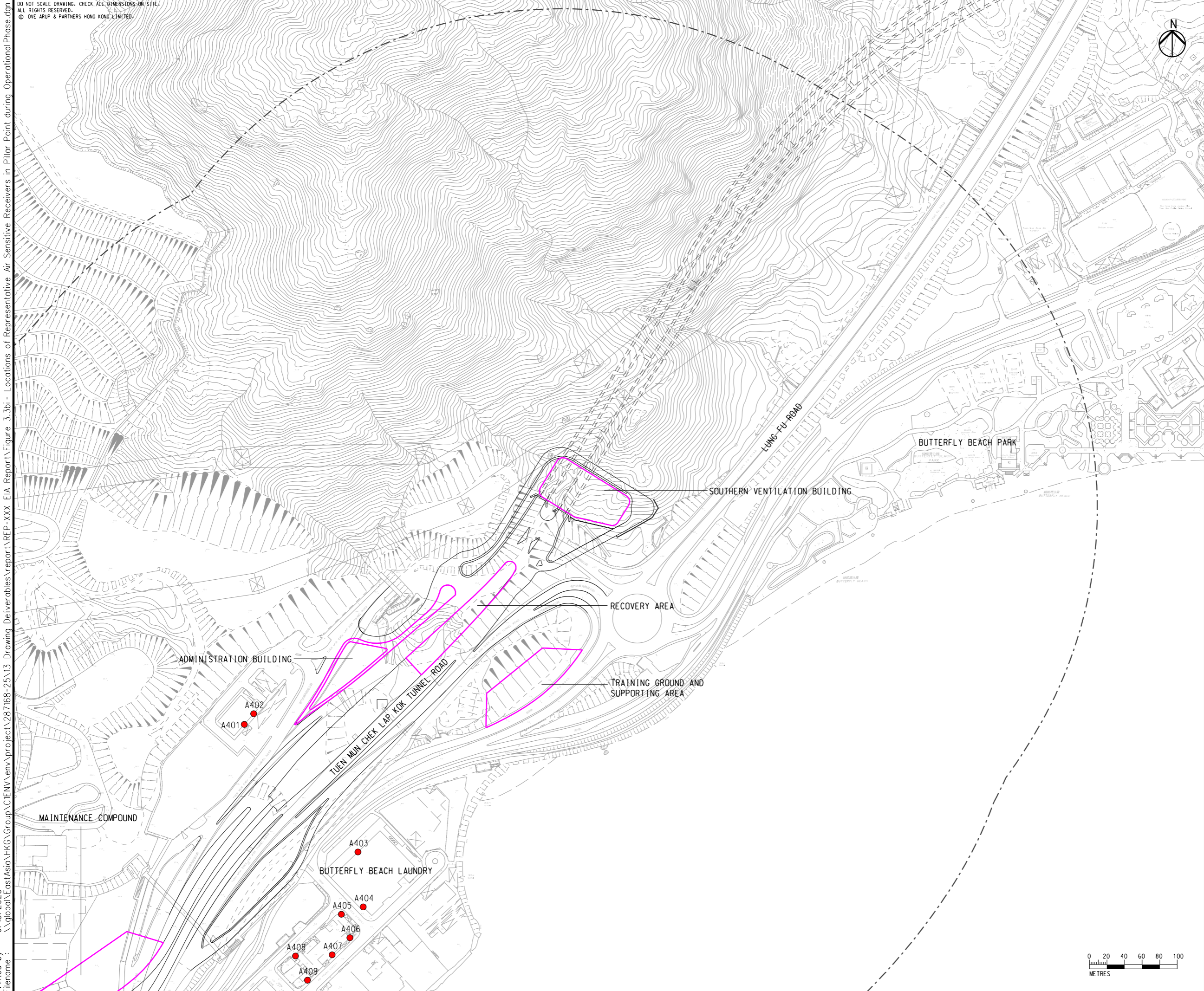
Drawing title
LOCATIONS OF REPRESENTATIVE AIR SENSITIVE RECEIVERS IN PILLAR POINT DURING OPERATIONAL PHASE

Drawing no.		Rev.	
FIGURE 3.3b		B	
Drawn	Date	Checked	Approved
GL	08/23	TL	FC
Scale	Status		PRELIMINARY
1:50000 @ A3			

COPYRIGHT RESERVED

路政署
 HIGHWAYS DEPARTMENT

DO NOT SCALE DRAWING. CHECK ALL DIMENSIONS ON SITE.
 ALL RIGHTS RESERVED.
 © OVE ARUP & PARTNERS HONG KONG LIMITED.



- LEGEND**
- PORTAL AREA AND AT-GRADED ROAD/ ELEVATED ROAD
 - PROPOSED TUNNEL
 - HIGHWAY/ TUNNEL OPERATION AND MAINTENANCE FACILITIES
 - 500M OPERATIONAL ASSESSMENT AREA
 - EXISTING REPRESENTATIVE AIR SENSITIVE RECEIVERS

Printed by : 6/15/2023
 Filename : \\global\EastAsia\HK\Group\CIENV\env\project\287168-25\13 Drawing Deliverables\report\REP-XXX EIA Report\Figure 3.3bi - Locations of Representative Air Sensitive Receivers in Pillar Point during Operational Phase.dgn

A	FIRST ISSUE	GL	06/23
Rev	Description	By	Date

Consultant
ARUP

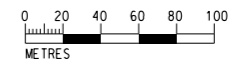
Project title
 Agreement No. CE 65/2021(HY)
 Tuen Mun Bypass - Investigation

Drawing title
LOCATIONS OF REPRESENTATIVE AIR SENSITIVE RECEIVERS IN PILLAR POINT DURING OPERATIONAL PHASE

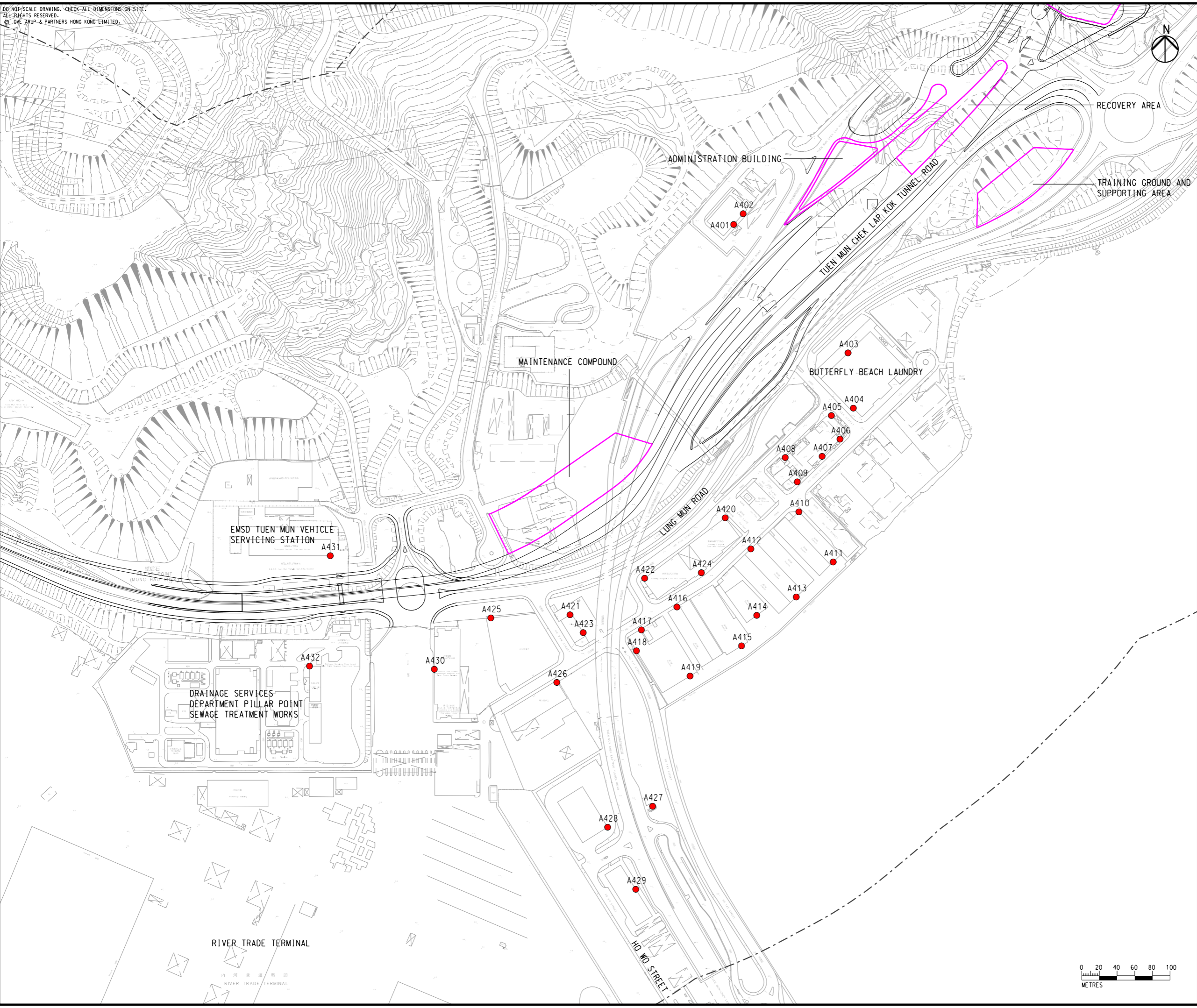
Drawing no.		Rev.	
FIGURE 3.3bi		A	
Drawn	Date	Checked	Approved
GL	06/23	TL	FC
Scale	Status		PRELIMINARY
1:4000 @ A3			

COPYRIGHT RESERVED

路政署
 HIGHWAYS DEPARTMENT



Printed by : 6/15/2023
 Filename : \\global\EastAsia\HKG\Group\CIENV\env\project\287168-25\13 Drawing Deliverables\report\REP-XXX EIA Report\Figure 3.3bi - Locations of Representative Air Sensitive Receivers in Pillar Point during Operational Phase.dgn

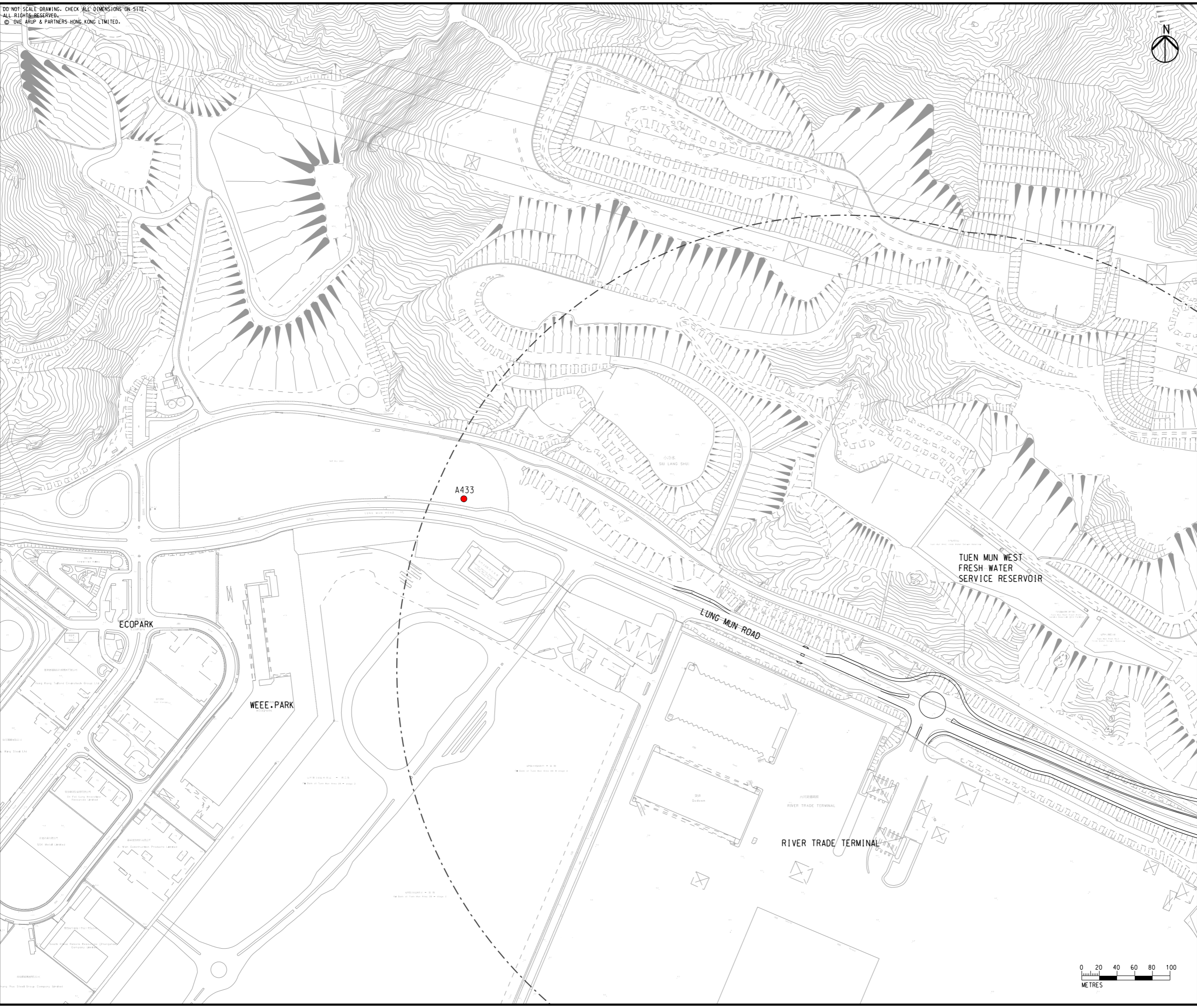



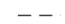


- LEGEND**
- PORTAL AREA AND AT-GRADED ROAD/ ELEVATED ROAD
 - PROPOSED TUNNEL
 - HIGHWAY/ TUNNEL OPERATION AND MAINTENANCE FACILITIES
 - 500M OPERATIONAL ASSESSMENT AREA
 - EXISTING REPRESENTATIVE AIR SENSITIVE RECEIVERS

A	FIRST ISSUE	GL	06/23	
Rev	Description	By	Date	
Consultant				
<h1 style="margin: 0;">ARUP</h1>				
Project title				
Agreement No. CE 65/2021(HY) Tuen Mun Bypass - Investigation				
Drawing title				
LOCATIONS OF REPRESENTATIVE AIR SENSITIVE RECEIVERS IN PILLAR POINT DURING OPERATIONAL PHASE				
Drawing no.				
FIGURE 3.3bi			Rev.	A
Drawn	Date	Checked	Approved	
GL	06/23	TL	FC	
Scale	1:4000 @ A3		Status	PRELIMINARY
COPYRIGHT RESERVED				
路政署 HIGHWAYS DEPARTMENT				

Printed by : 6/15/2023
 Filename : \\global\EastAsia\HKG\Group\CI\ENV\env\project\287168-25\13 Drawing Deliverables\report\REP-XXX EIA Report\Figure 3.3biii - Locations of Representative Air Sensitive Receivers in Pillar Point during Operational Phase.dgn

DO NOT SCALE DRAWING. CHECK ALL DIMENSIONS ON-SITE.
 ALL RIGHTS RESERVED.
 © 2016 ARUP & PARTNERS HONG KONG LIMITED.



- LEGEND**
-  PORTAL AREA AND AT-GRADED ROAD/ ELEVATED ROAD
 -  PROPOSED TUNNEL
 -  500M OPERATIONAL ASSESSMENT AREA
 -  EXISTING REPRESENTATIVE AIR SENSITIVE RECEIVERS

A	FIRST ISSUE	GL	06/23
Rev	Description	By	Date

Consultant
ARUP

Project title
 Agreement No. CE 65/2021(HY)
 Tuen Mun Bypass - Investigation

Drawing title
LOCATIONS OF REPRESENTATIVE AIR SENSITIVE RECEIVERS IN PILLAR POINT DURING OPERATIONAL PHASE

Drawing no. FIGURE 3.3biii		Rev. A	
Drawn GL	Date 06/23	Checked TL	Approved FC
Scale 1:4000 @ A3		Status PRELIMINARY	

COPYRIGHT RESERVED

