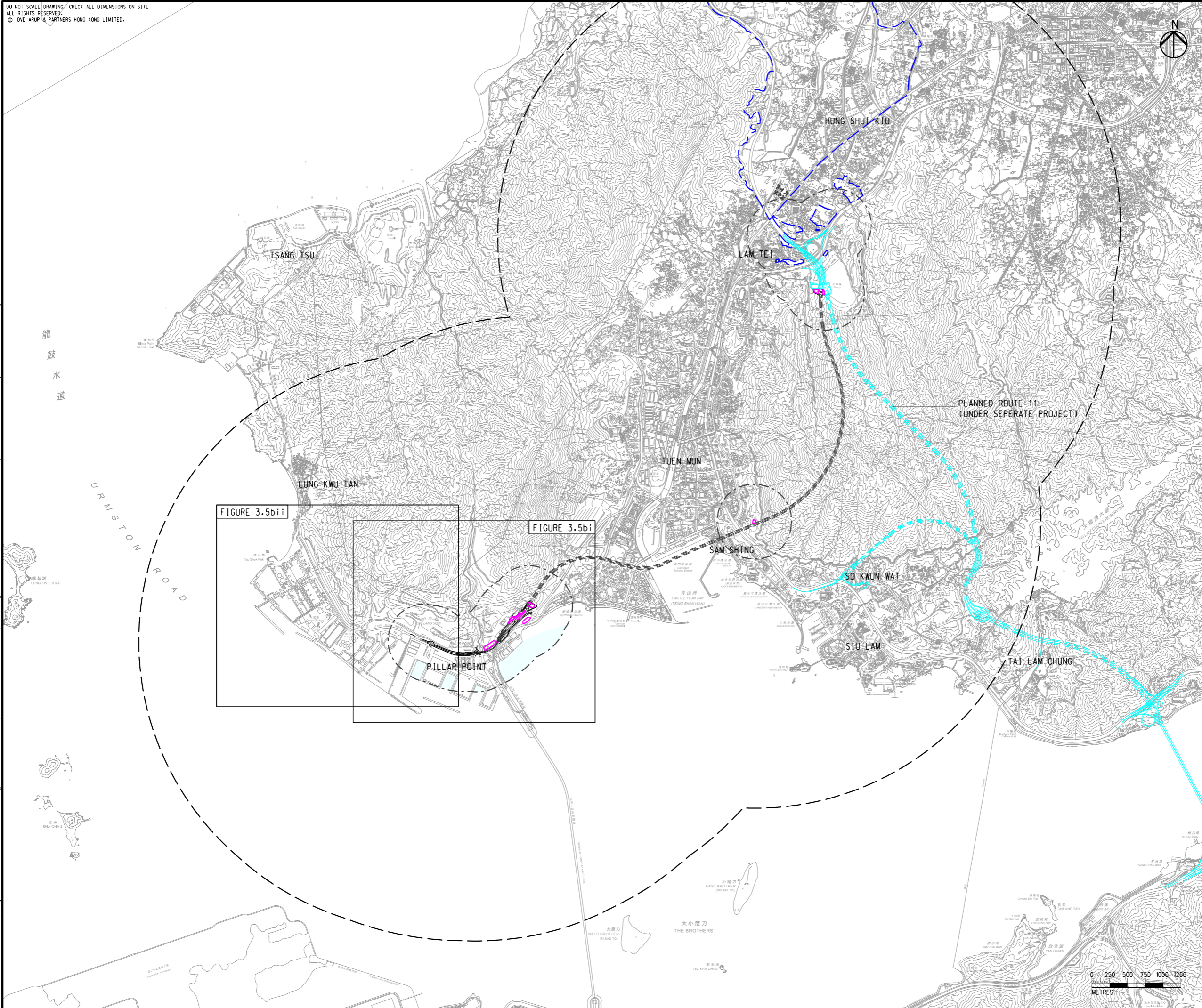


DO NOT SCALE DRAWING. CHECK ALL DIMENSIONS ON SITE.
 ALL RIGHTS RESERVED.
 © OVE ARUP & PARTNERS HONG KONG LIMITED.

Printed by : 23/8/2023
 Filename : G:\env\project\287168-25\13 Drawing Deliverables\report\REP-XXX EIA Report\Figure 3.5b - Locations of Chimney and Marine Facility in Pillar Point.dgn



- LEGEND**
- PORTAL AREA AND AT-GRADED ROAD/ ELEVATED ROAD
 - PROPOSED TUNNEL
 - HIGHWAY/ TUNNEL OPERATION AND MAINTENANCE FACILITIES
 - 500M OPERATIONAL ASSESSMENT AREA
 - 4KM OPERATIONAL ASSESSMENT AREA
 - PLANNED ROUTE 11 (UNDER SEPERATE PROJECT)
 - COMMITTED/PLANNED DEVELOPMENTS
 - MARINE EMISSION SOURCES

C	THIRD ISSUE	GL	08/23
B	SECOND ISSUE	GL	07/23
A	FIRST ISSUE	GL	06/23
Rev	Description	By	Date

Consultant
ARUP

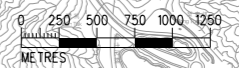
Project title
 Agreement No. CE 65/2021(HY)
 Tuen Mun Bypass - Investigation

Drawing title
LOCATIONS OF CHIMNEY AND MARINE FACILITY IN PILLAR POINT

Drawing no.		Rev.	
FIGURE 3.5b		C	
Drawn	Date	Checked	Approved
GL	08/23	TL	FC
Scale	Status		PRELIMINARY
1:50000 @ A3			

COPYRIGHT RESERVED

路政署
 HIGHWAYS DEPARTMENT

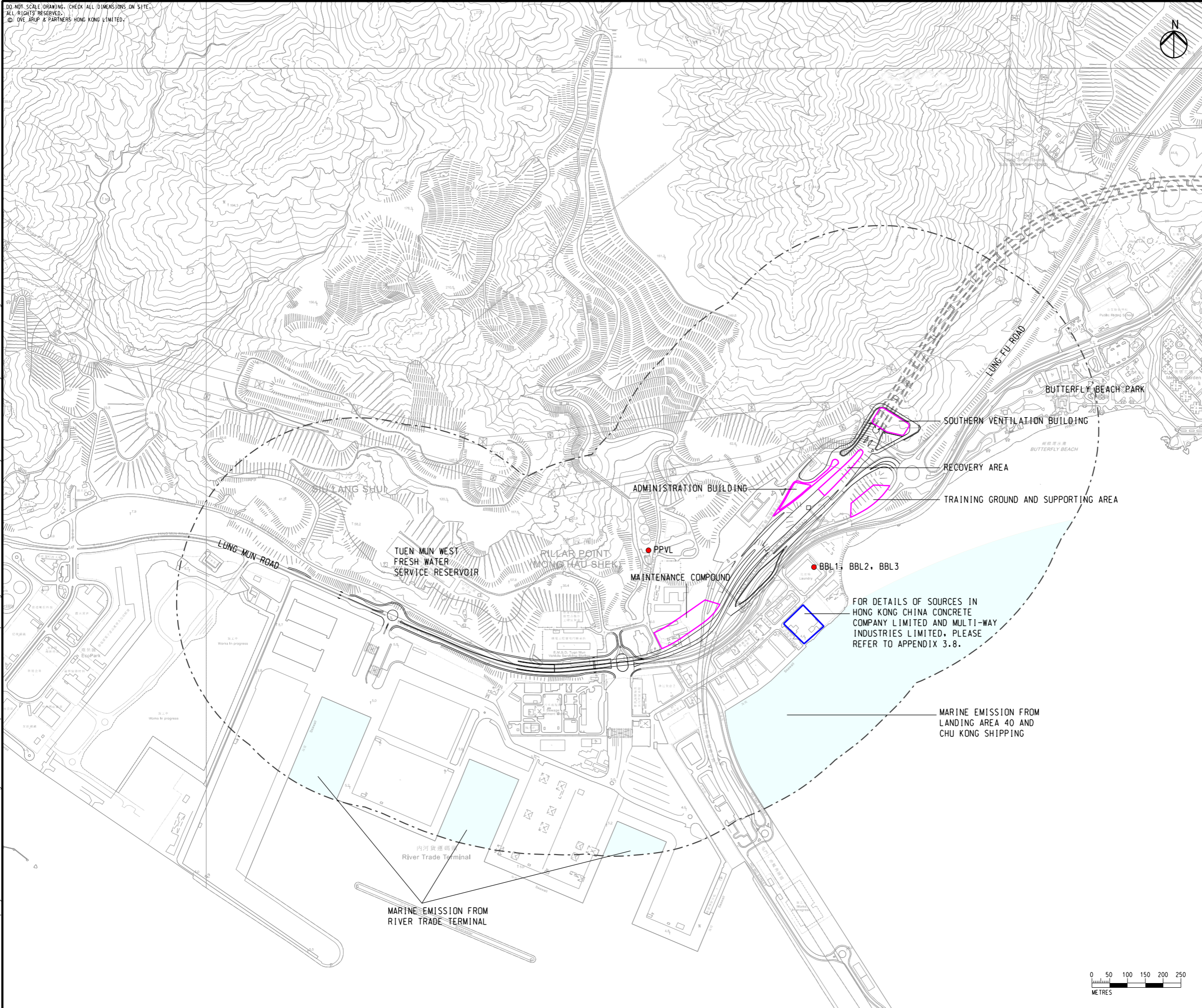


DO NOT SCALE DRAWING. CHECK ALL DIMENSIONS ON SITE.
 ALL RIGHTS RESERVED.
 © OVE ARUP & PARTNERS HONG KONG LIMITED.



- LEGEND**
- PORTAL AREA AND AT-GRADED ROAD/ ELEVATED ROAD
 - PROPOSED TUNNEL
 - HIGHWAY/ TUNNEL OPERATION AND MAINTENANCE FACILITIES
 - 500M OPERATIONAL ASSESSMENT AREA
 - MARINE EMISSION SOURCES
 - CHIMNEYS
 - OTHER EMISSION SOURCES

Printed by : 6/16/2023
 Filename : G:\env\project\287168-25\13 Drawing Deliverables\report\REP-XXX EIA Report\Figure 3.5bi - Locations of Chimney and Marine Facility in Pillar Point.dgn



FOR DETAILS OF SOURCES IN HONG KONG CHINA CONCRETE COMPANY LIMITED AND MULTI-WAY INDUSTRIES LIMITED, PLEASE REFER TO APPENDIX 3.8.

MARINE EMISSION FROM LANDING AREA 40 AND CHU KONG SHIPPING

MARINE EMISSION FROM RIVER TRADE TERMINAL

A	FIRST ISSUE	GL	06/23
Rev	Description	By	Date

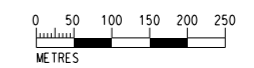
Consultant
ARUP

Project title
 Agreement No. CE 65/2021(HY)
 Tuen Mun Bypass - Investigation

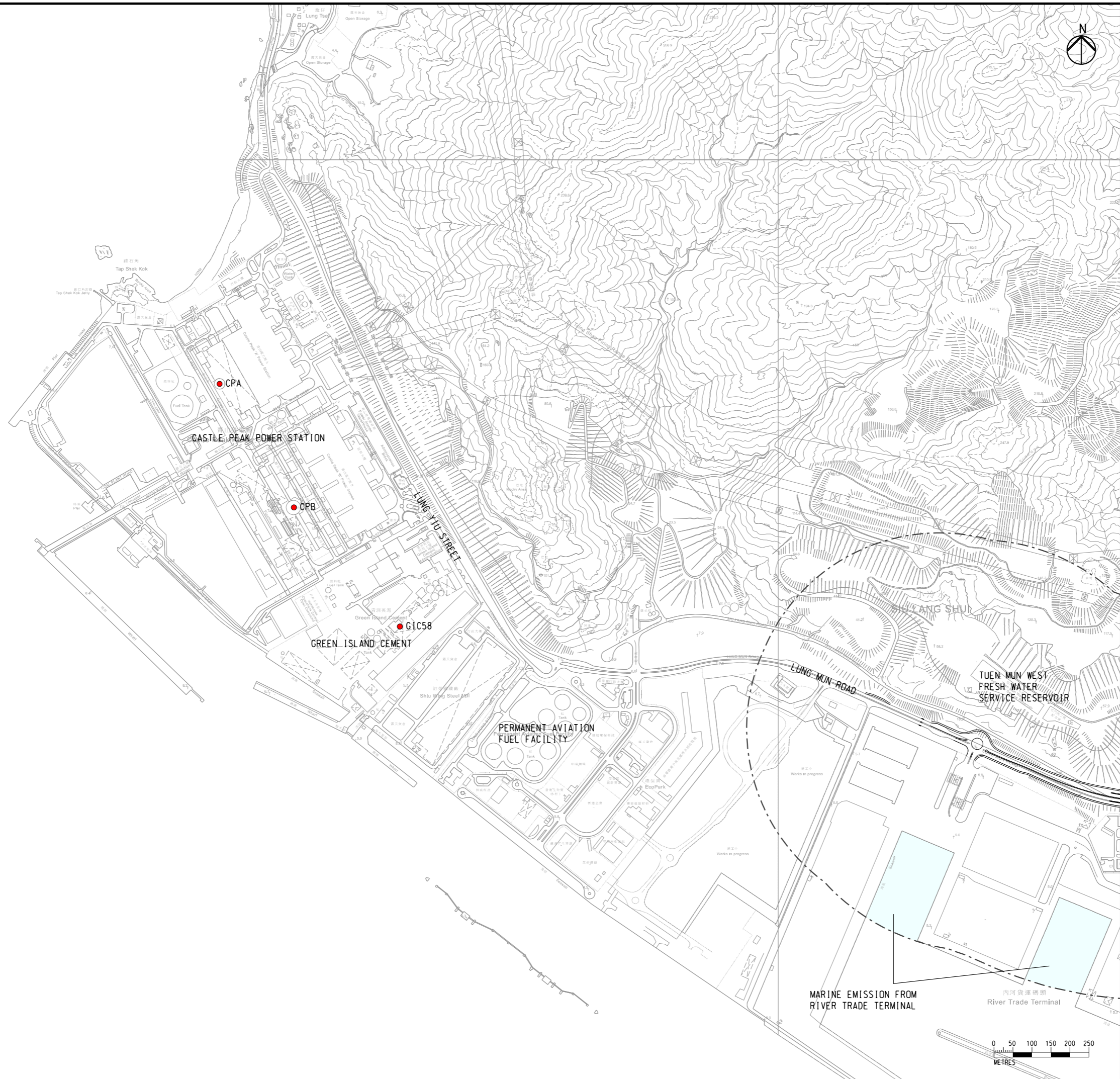
Drawing title
LOCATIONS OF CHIMNEY AND MARINE FACILITY IN PILLAR POINT

Drawing no.		Rev.	
FIGURE 3.5bi		A	
Drawn	Date	Checked	Approved
GL	06/23	TL	FC
Scale	Status		PRELIMINARY
1:10000 @ A3			

COPYRIGHT RESERVED



DO NOT SCALE DRAWING. CHECK ALL DIMENSIONS ON SITE.
 ALL RIGHTS RESERVED.
 © OVE ARUP & PARTNERS HONG KONG LIMITED.



- LEGEND**
- PORTAL AREA AND AT-GRADED ROAD/ ELEVATED ROAD
 - PROPOSED TUNNEL
 - HIGHWAY/ TUNNEL OPERATION AND MAINTENANCE FACILITIES
 - 500M OPERATIONAL ASSESSMENT AREA
 - MARINE EMISSION SOURCES
 - CHIMNEYS



A	FIRST ISSUE	GL	06/23
Rev	Description	By	Date

Consultant
ARUP

Project title
 Agreement No. CE 65/2021(HY)
 Tuén Mun Bypass - Investigation

Drawing title
LOCATIONS OF CHIMNEY AND MARINE FACILITY IN PILLAR POINT

Drawing no.		Rev.	
FIGURE 3.5bii		A	
Drawn	Date	Checked	Approved
GL	06/23	TL	FC
Scale	Status		PRELIMINARY
1:10000 @ A3			

COPYRIGHT RESERVED

路政署
 HIGHWAYS DEPARTMENT



Printed by : 6/15/2023
 Filename : \\global\EastAsia\HKG\Group\CIENV\env\project\287168-25\13 Drawing Deliverables\report\REP-XXX EIA Report\Figure 3.5bii - Locations of Chimney and Marine Facility in Pillar Point.dgn