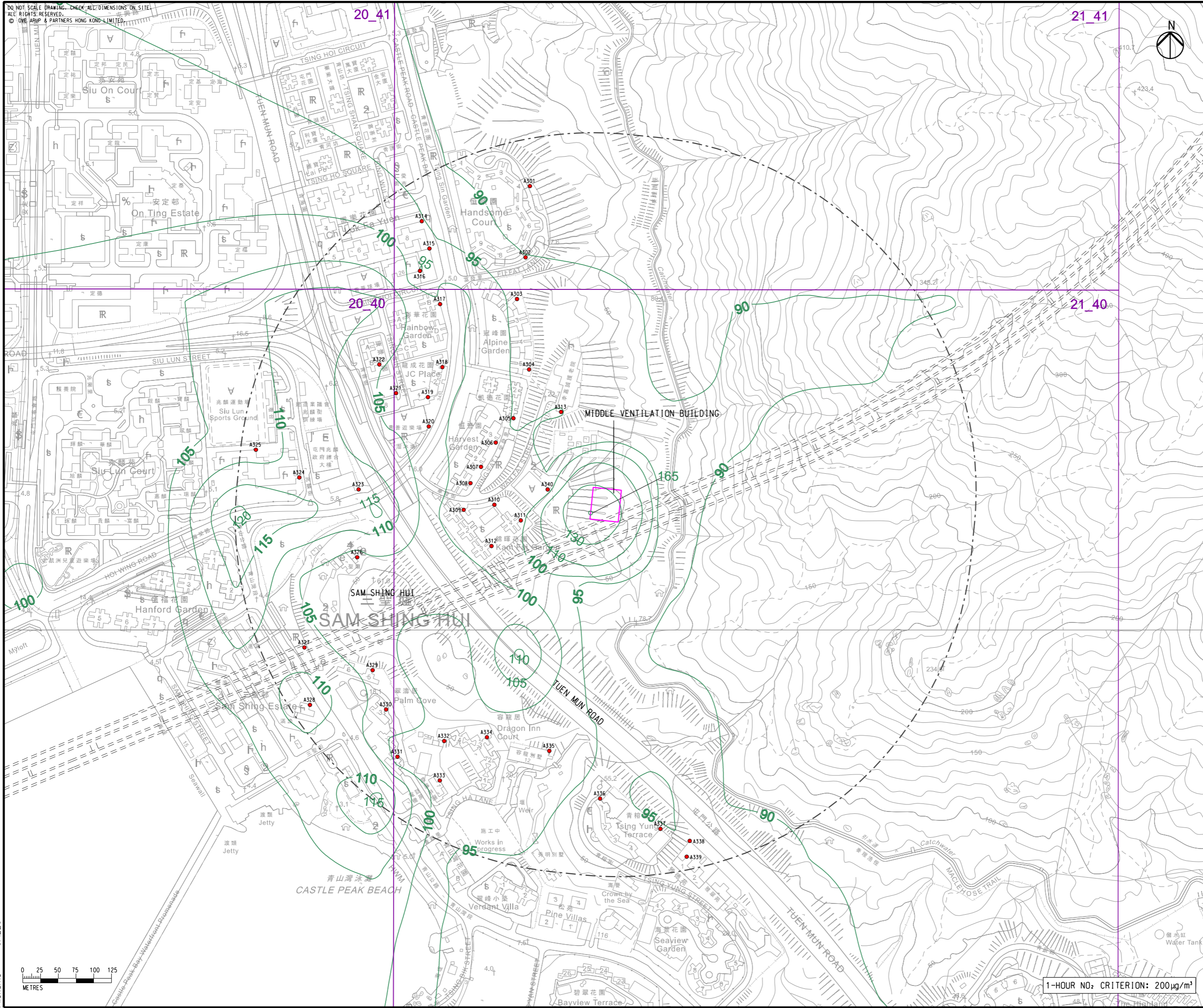


DO NOT SCALE DRAWING. CHECK ALL DIMENSIONS ON SITE.  
ALL RIGHTS RESERVED.  
© OVE ARUP & PARTNERS HONG KONG LIMITED



- LEGEND**
- PORTAL AREA AND AT-GRADED ROAD/ ELEVATED ROAD
  - PROPOSED TUNNEL
  - HIGHWAY/ TUNNEL OPERATION AND MAINTENANCE FACILITIES
  - 500M OPERATIONAL ASSESSMENT AREA
  - CONCERNED PATH GRID
  - EXISTING REPRESENTATIVE AIR SENSITIVE RECEIVERS
  - 200 NO<sub>2</sub> CONTOUR, µg/m<sup>3</sup>

C	THIRD ISSUE	GL	08/23
B	SECOND ISSUE	GL	07/23
A	FIRST ISSUE	GL	06/23
Rev	Description	By	Date

Consultant  
**ARUP**

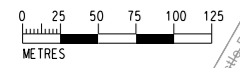
Project title  
Agreement No. CE 65/2021(HY)  
Tuen Mun Bypass - Investigation

Drawing title  
**CONTOURS OF CUMULATIVE 19th HIGHEST 1-HOUR NO<sub>2</sub> CONCENTRATION AT 1.5m ABOVE GROUND (YEAR 2048) IN SAM SHING**

Drawing no. <b>FIGURE 3.6c</b>		Rev. <b>C</b>	
Drawn GL	Date 08/23	Checked TL	Approved FC
Scale 1:5000 @ A3		Status PRELIMINARY	

COPYRIGHT RESERVED  
 路政署  
**HIGHWAYS DEPARTMENT**

Printed by : \$DATES  
Filename : \$FILES



1-HOUR NO<sub>2</sub> CRITERION: 200 µg/m<sup>3</sup>