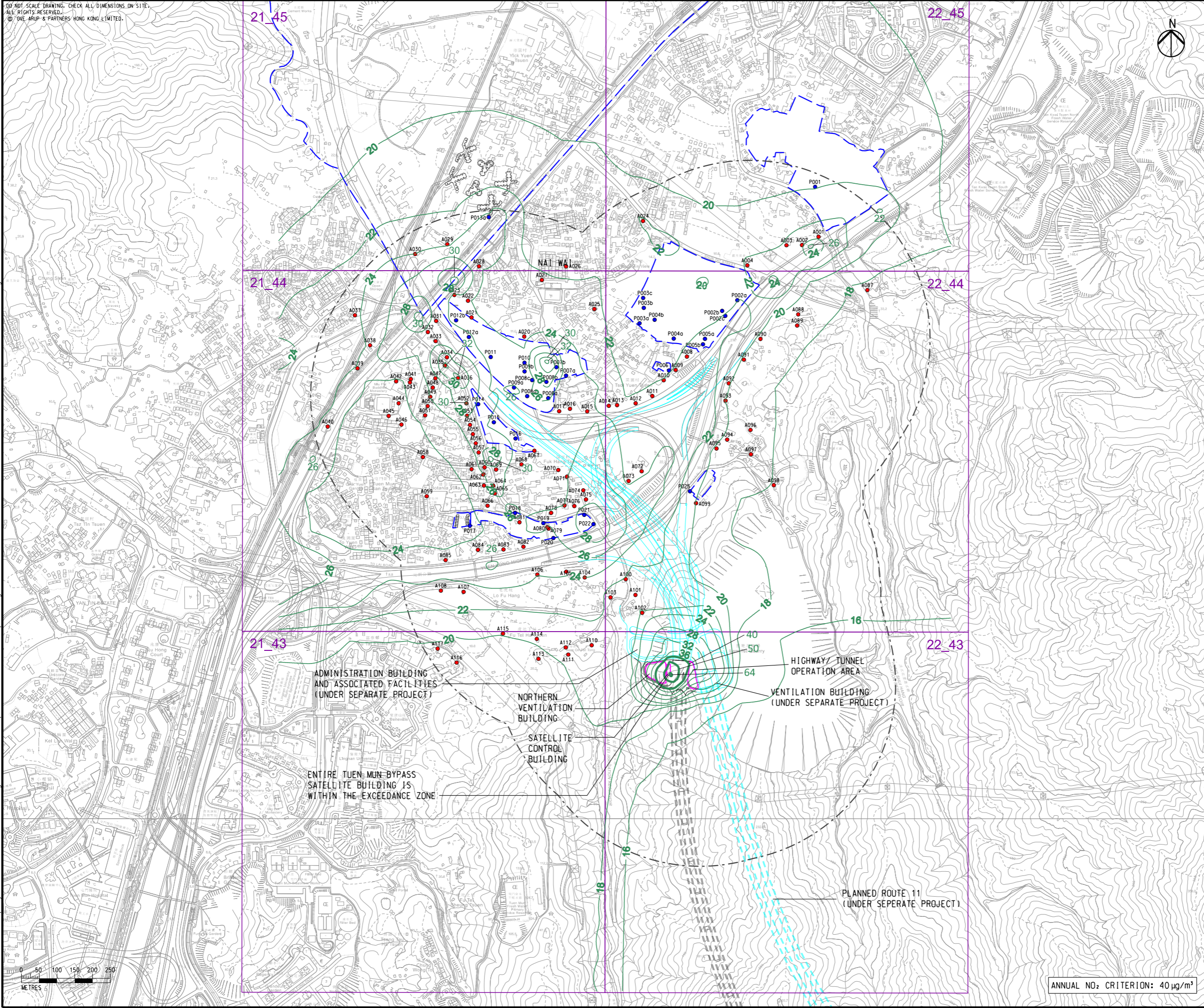


DO NOT SCALE DRAWING. CHECK ALL DIMENSIONS ON SITE.
ALL RIGHTS RESERVED.
© 2024 ARUP & PARTNERS HONG KONG LIMITED.

Printed by : 9/14/2023
Filename : G:\env\project\287168-25\13 Drawing Deliverables\REP-XXX EIA Report\Figure 3.7a - Contours of Cumulative Annual NO2 (Year 2048) in Lam Tei.dgn



- LEGEND**
- PORTAL AREA AND AT-GRADED ROAD/ ELEVATED ROAD
 - PROPOSED TUNNEL
 - HIGHWAY/ TUNNEL OPERATION AND MAINTENANCE FACILITIES
 - 500M OPERATIONAL ASSESSMENT AREA
 - PLANNED ROUTE 11 (UNDER SEPARATE PROJECT)
 - COMMITTED/PLANNED DEVELOPMENTS
 - CONCERNED PATH GRID
 - EXISTING REPRESENTATIVE AIR SENSITIVE RECEIVERS
 - COMMITTED/PLANNED REPRESENTATIVE AIR SENSITIVE RECEIVERS
 - 40 - NO₂ CONTOUR, µg/m³

C	THIRD ISSUE	GL	08/23
B	SECOND ISSUE	GL	07/23
A	FIRST ISSUE	GL	06/23
Rev	Description	By	Date

Consultant
ARUP

Project title
Agreement No. CE 65/2021(HY)
Tuen Mun Bypass - Investigation

Drawing title
CONTOURS OF CUMULATIVE ANNUAL NO₂ CONCENTRATION AT 1.5m ABOVE GROUND (YEAR 2048) IN LAM TEI

Drawing no. FIGURE 3.7a		Rev. C	
Drawn GL	Date 08/23	Checked TL	Approved FC
Scale 1:10000 @ A3		Status PRELIMINARY	

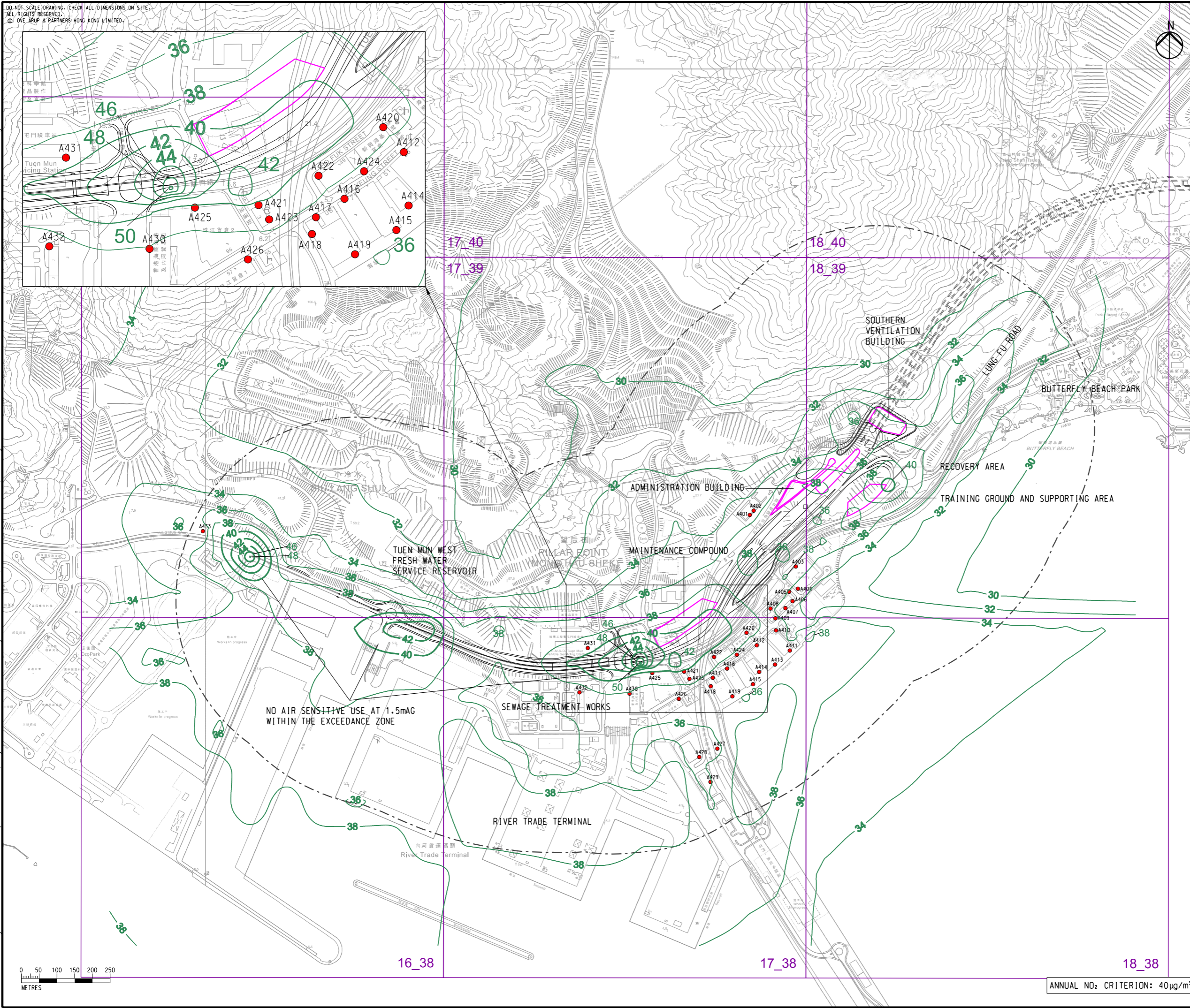
COPYRIGHT RESERVED

路政署
HIGHWAYS DEPARTMENT

ANNUAL NO₂ CRITERION: 40 µg/m³

DO NOT SCALE DRAWING. CHECK ALL DIMENSIONS ON SITE.
 ALL RIGHTS RESERVED.
 © OVE ARUP & PARTNERS HONG KONG LIMITED.

Printed by : 7/9/2023
 Filename : \\global\EastAsia\HKG\Group\CI\ENV\env\project\287168-25\13 Drawing Deliverables\report\REP-XXX EIA Report\Figure 3.7b - Contours of Cumulative Annual NO2 (Year 2048) in Pillar Point.dgn



- LEGEND**
- PORTAL AREA AND AT-GRADED ROAD/ ELEVATED ROAD
 - PROPOSED TUNNEL
 - HIGHWAY/ TUNNEL OPERATION AND MAINTENANCE FACILITIES
 - 500M OPERATIONAL ASSESSMENT AREA
 - CONCERNED PATH GRID
 - EXISTING REPRESENTATIVE AIR SENSITIVE RECEIVERS
 - 40 NO₂ CONTOUR, µg/m³

C	THIRD ISSUE	GL	09/23
B	SECOND ISSUE	GL	08/23
A	FIRST ISSUE	GL	06/23
Rev	Description	By	Date

Consultant
ARUP

Project title
 Agreement No. CE 65/2021(HY)
 Tuen Mun Bypass - Investigation

Drawing title
CONTOURS OF CUMULATIVE ANNUAL NO₂ CONCENTRATION AT 1.5m ABOVE GROUND (YEAR 2048) IN PILLAR POINT

Drawing no. FIGURE 3.7b		Rev. C	
Drawn GL	Date 09/23	Checked TL	Approved FC
Scale 1:10000 @ A3		Status PRELIMINARY	

COPYRIGHT RESERVED

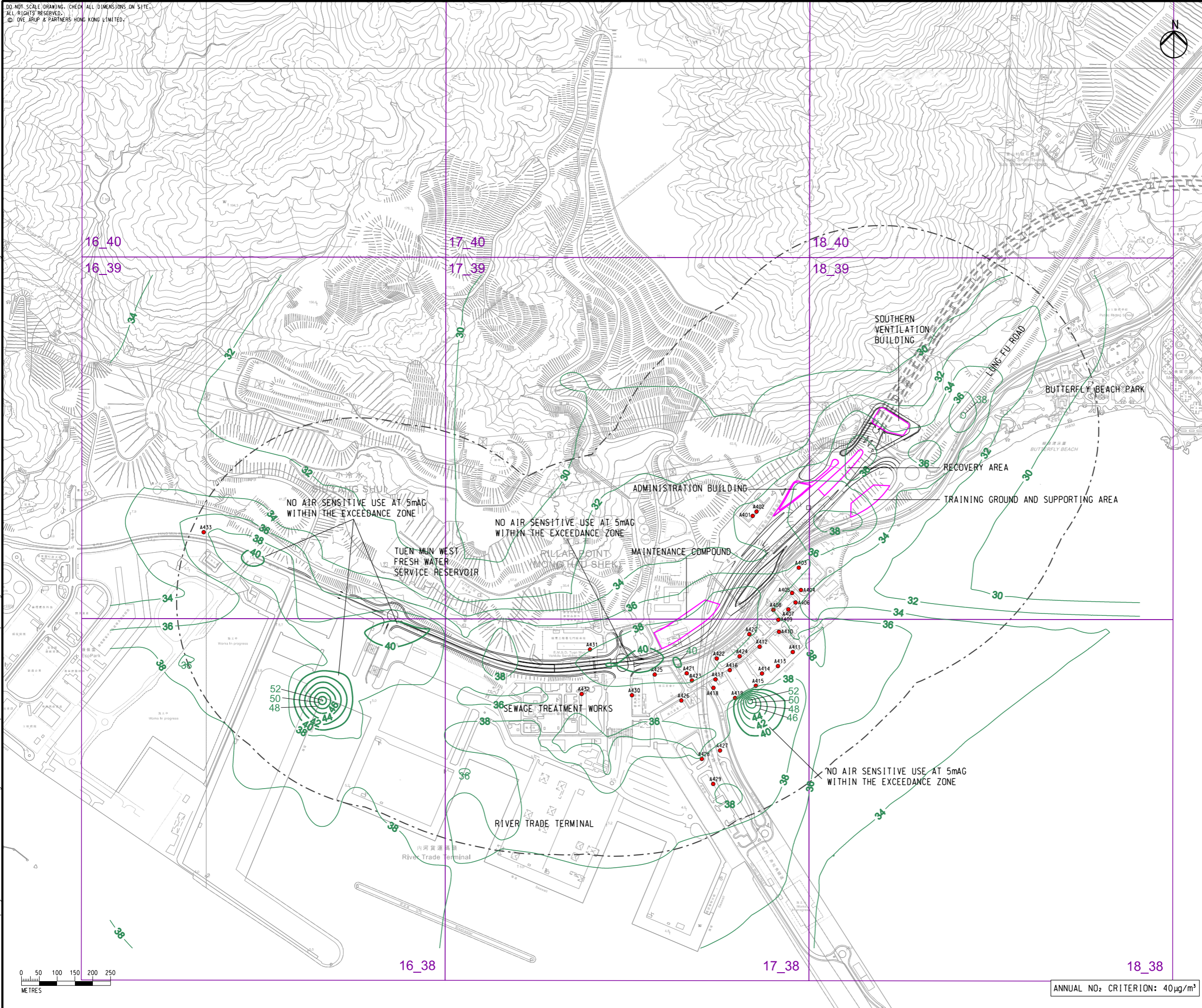
路政署
 HIGHWAYS DEPARTMENT

ANNUAL NO₂ CRITERION: 40 µg/m³

DO NOT SCALE DRAWING. CHECK ALL DIMENSIONS ON SITE.
 ALL RIGHTS RESERVED.
 © OVE ARUP & PARTNERS HONG KONG LIMITED.

- LEGEND**
- PORTAL AREA AND AT-GRADED ROAD/ ELEVATED ROAD
 - PROPOSED TUNNEL
 - HIGHWAY/ TUNNEL OPERATION AND MAINTENANCE FACILITIES
 - 500M OPERATIONAL ASSESSMENT AREA
 - CONCERNED PATH GRID
 - EXISTING REPRESENTATIVE AIR SENSITIVE RECEIVERS
 - NO₂ CONTOUR, µg/m³

Printed by : 7/9/2023
 Filename : G:\env\project\287168-25\13 Drawing Deliverables\report\REP-XXX EIA Report\Figure 3.7c - Contours of Cumulative Annual NO₂ (Year 2048) in Pillar Point_5m.dgn



C	THIRD ISSUE	GL	09/23
B	SECOND ISSUE	GL	08/23
A	FIRST ISSUE	GL	06/23
Rev	Description	By	Date

Consultant
ARUP

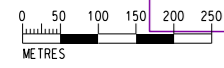
Project title
 Agreement No. CE 65/2021(HY)
 Tuén Mun Bypass - Investigation

Drawing title
CONTOURS OF CUMULATIVE ANNUAL NO₂ CONCENTRATION AT 5m ABOVE GROUND (YEAR 2048) IN PILLAR POINT

Drawing no.		Rev.	
FIGURE 3.7c		C	
Drawn	Date	Checked	Approved
GL	09/23	TL	FC
Scale	Status		PRELIMINARY
1:10000 @ A3			

COPYRIGHT RESERVED

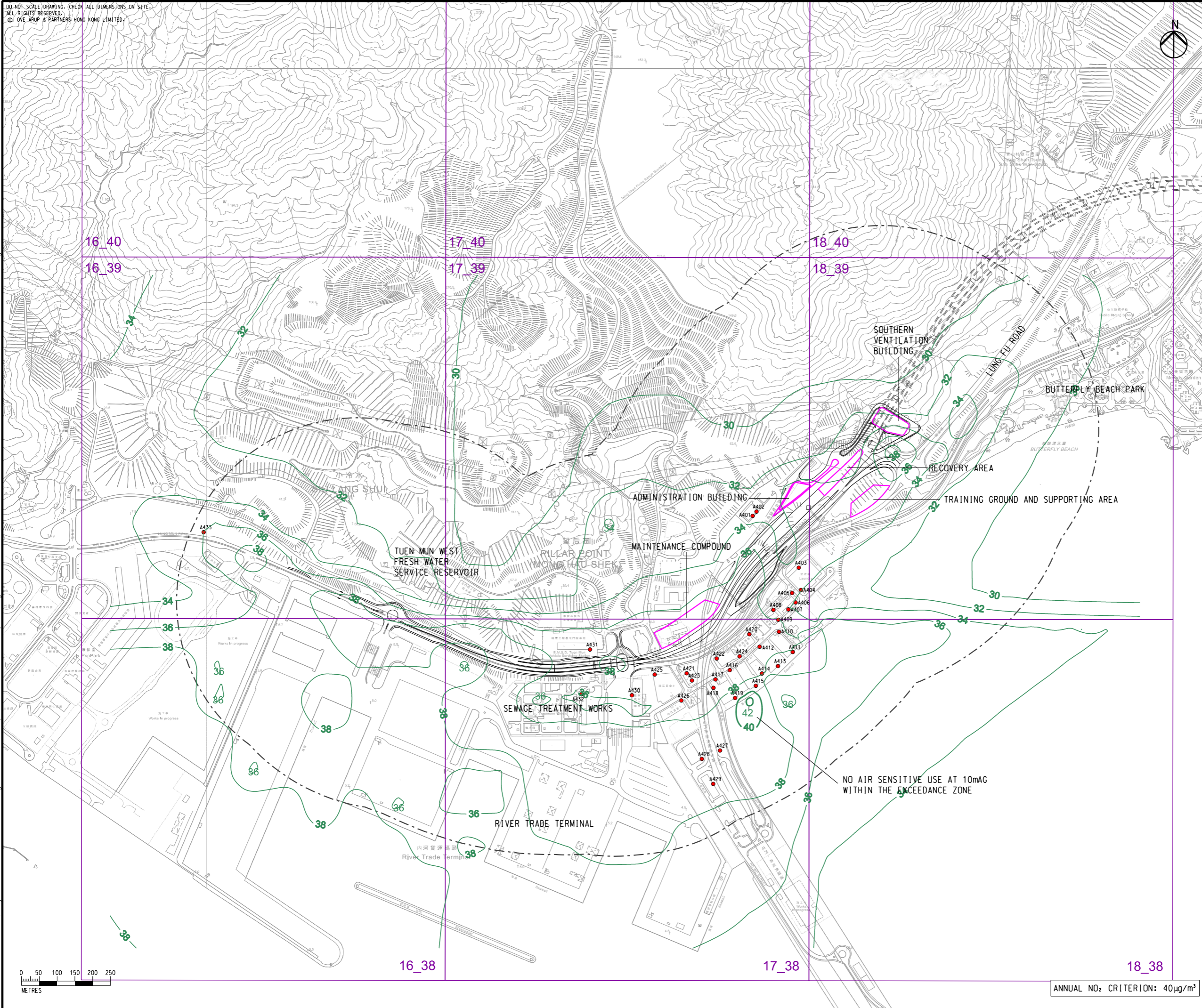
路政署
 HIGHWAYS DEPARTMENT



ANNUAL NO₂ CRITERION: 40 µg/m³

DO NOT SCALE DRAWING. CHECK ALL DIMENSIONS ON SITE.
 ALL RIGHTS RESERVED.
 © OVE ARUP & PARTNERS HONG KONG LIMITED.

- LEGEND**
- PORTAL AREA AND AT-GRADED ROAD/ ELEVATED ROAD
 - PROPOSED TUNNEL
 - HIGHWAY/ TUNNEL OPERATION AND MAINTENANCE FACILITIES
 - 500M OPERATIONAL ASSESSMENT AREA
 - CONCERNED PATH GRID
 - EXISTING REPRESENTATIVE AIR SENSITIVE RECEIVERS
 - NO₂ CONTOUR, µg/m³



C	THIRD ISSUE	GL	09/23
B	SECOND ISSUE	GL	08/23
A	FIRST ISSUE	GL	06/23
Rev	Description	By	Date

Consultant
ARUP

Project title
 Agreement No. CE 65/2021(HY)
 Tuén Mun Bypass - Investigation

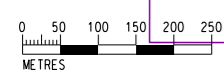
Drawing title
CONTOURS OF CUMULATIVE ANNUAL NO₂ CONCENTRATION AT 10m ABOVE GROUND (YEAR 2048) IN PILLAR POINT

Drawing no.		Rev.	
FIGURE 3.7d		C	
Drawn	Date	Checked	Approved
GL	09/23	TL	FC
Scale	Status		PRELIMINARY
1:10000 @ A3			

COPYRIGHT RESERVED

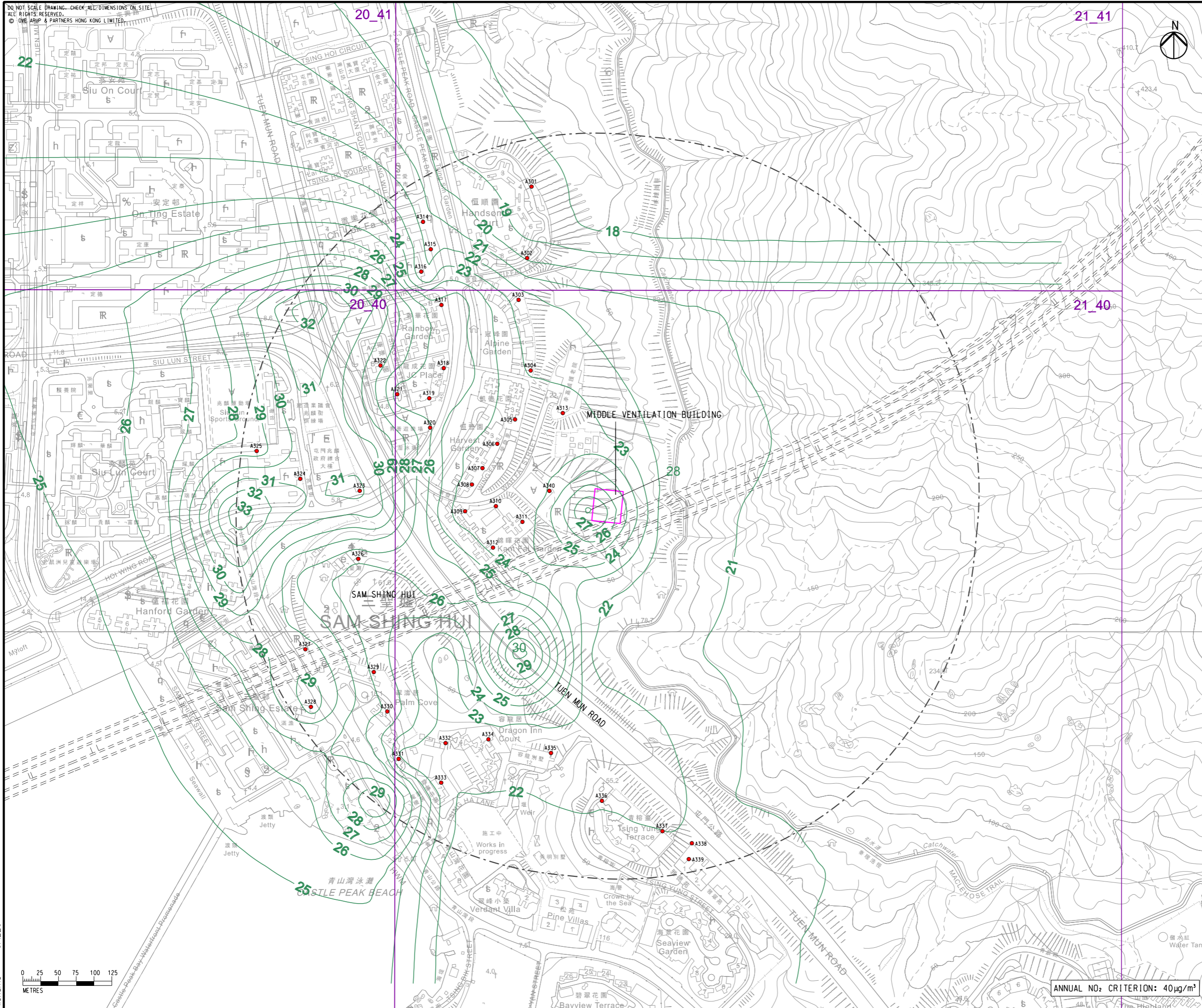
路政署
 HIGHWAYS DEPARTMENT

Printed by : 7/9/2023
 Filename : G:\env\project\287168-25\13 Drawing Deliverables\report\REP-XXX EIA Report\Figure 3.7d - Contours of Cumulative Annual NO2 (Year 2048) in Pillar Point_10m.dgn



ANNUAL NO₂ CRITERION: 40 µg/m³

DO NOT SCALE DRAWING. CHECK ALL DIMENSIONS ON SITE.
ALL RIGHTS RESERVED.
© OVE ARUP & PARTNERS HONG KONG LIMITED



- LEGEND**
- PORTAL AREA AND AT-GRADED ROAD/ ELEVATED ROAD
 - PROPOSED TUNNEL
 - HIGHWAY/ TUNNEL OPERATION AND MAINTENANCE FACILITIES
 - 500M OPERATIONAL ASSESSMENT AREA
 - CONCERNED PATH GRID
 - EXISTING REPRESENTATIVE AIR SENSITIVE RECEIVERS
 - 40 - NO₂ CONTOUR, µg/m³

C	THIRD ISSUE	GL	08/23
B	SECOND ISSUE	GL	07/23
A	FIRST ISSUE	GL	06/23
Rev	Description	By	Date

Consultant
ARUP

Project title
Agreement No. CE 65/2021(HY)
Tuen Mun Bypass - Investigation

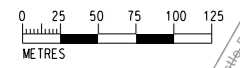
Drawing title
CONTOURS OF CUMULATIVE ANNUAL NO₂ CONCENTRATION AT 1.5m ABOVE GROUND (YEAR 2048) IN SAM SHING

Drawing no. FIGURE 3.7e		Rev. C	
Drawn GL	Date 08/23	Checked TL	Approved FC
Scale 1:5000 @ A3		Status PRELIMINARY	

COPYRIGHT RESERVED

路政署
HIGHWAYS DEPARTMENT

Printed by : \$DATES
Filename : \$FILES



ANNUAL NO₂ CRITERION: 40µg/m³